



Office for Product
Safety & Standards

1893/1

III(4)e

Pursuant to section 12 of the Weights and Measures Act 1985

Certificate No 1893/1 Revision 3

Issued by:

The Office for Product Safety and Standards

In accordance with the provisions of section 12 of the Weights and Measures Act 1985, the Secretary of State for Business, Energy & Industrial Strategy has issued this UK national type-approval certificate to:

Gaskell & Chambers Limited
2 Allied Business Centre
Coldharbour Lane
Harpenden
Hertfordshire
AL5 4UT
United Kingdom

And hereby certifies as suitable for use for trade the pattern of an intoxicating liquor measuring instrument for use in dispensing intoxicating liquor in fixed quantities of 25 ml. Alternative capacities are included in the descriptive annex to this certificate.

The necessary data (principal characteristics, alterations, securing, functioning etc) for identification purposes and conditions (when applicable) are set out in the descriptive annex to this certificate.

Note: This certificate relates to the suitability of the equipment for use for trade only in respect of its metrological characteristics. It does not constitute or imply any guarantee as to the safety of the equipment in use for trade or otherwise.

This revision replaces previous versions of the certificate.

Issue Date: 03 February 2023

Valid Until: 09 October 2024

Grégory Glas
Lead Technical Manager
For and on behalf of the Secretary of State

CONTENTS

CERTIFICATION NO 1893/1

- 1 INTRODUCTION**
- 2 DESCRIPTION**
- 3 MARKINGS**
- 4 AUTHORISED ALTERNATIVES**
- 5 CERTIFICATE HISTORY**

ILLUSTRATIONS

- Figure 1 The pattern
Figure 2 Drawing showing shortened inlet spout
Figure 3 New shaped surround and lever

Descriptive Annex

1 INTRODUCTION

This pattern is an intoxicating liquor measuring instrument arranged to measure and deliver quantities of 25 ml from unpressurised containers, typically inverted bottles or refillable casks. Dispensing is effected by pushing the vertical actuating lever using the top edge of the receiving vessel e.g. glass.

2 CONSTRUCTION

The sight glass (2) has the form of a circular domed window moulded in transparent plastic. Internally the moulding incorporates two stepped areas that create a flat cut-off top and bottom of the sight glass. The top cap (7) and sight glass are permanently bonded in place. The actuating lever is of the form shown in Figure 1 and is made of hard plastic.

2.1 ACTION

A sliding vertical operating lever (4) which by virtue of an inclined plane causes the intermediate lever (3) to be pushed rearwards against the return spring (1) and operating spring (2), progressively towards a position in line with the common pivot of the intermediate lever (3) and the lever arm (7). Further movement of the operating lever (4) causes a sudden reversal in the direction of force exerted by the operating spring (2) on the lever arm (7) pulling upwards the air valve shaft (6) and the standard (5) to open the outlet port and close the inlet port in one snap action. At the same time the movement of the air valve shaft (6) releases a conical part of its section from the air valve seal (8) creating an air path to the measure chamber. Liquor then passes from the measuring chamber through the outlet nozzle to be replaced by air drawn through the air valve.

2.2 OPERATION

Forcing the lever upwards causes the optic to dispense its contents. Once emptied, the lever is released, and the optic begins to refill.

3 MARKINGS

3.1 The certificate number, 1893/1, and the manufacturer's name, Gaskell & Chambers England, are permanently moulded into the top plate moulding.

3.2 The capacity of the instrument is durably marked across the centre of the sight glass in a manner that gives good legibility against the background with which it is used.

3.3 The verification mark may be applied to the mounting bracket using "tampo / screen" print. The verification mark shall be in a contrasting colour to that of the mounting bracket and shall be permanently, legibly and durably marked.

4 AUTHORISED ALTERNATIVES

4.1 Having a shortened inlet spout (Figure 2) with a minimum length of 24 mm.

4.2 Having a fixed capacity of 35 ml, 50 ml or 70 ml. The quantity legend is amended accordingly.

4.3 Having the body and chamber components manufactured from SAN, to which a Black dye has been added, behind the clear sight glass.

4.4 Having an alternative coloured body, giving the same alternative colouring behind the clear sight glass. The internal components behind the clear sight glass is any one of the following colours:

- Opaque fluorescent orange (product reference LR 3331, product category 1326)
- Translucent fluorescent orange (product reference LR 3302, product category 1326)
- Translucent brown (product reference LX 4322, product category 17856)
- Translucent fluorescent green (product reference LS 5544, product category 2053)
- Translucent fluorescent blue (product reference LT 8666, product category 1765)
- Translucent fluorescent yellow (product reference LQ 4594, product category 2053)
- Translucent fluorescent pink (product reference LP 9182, product category 2159)

4.5 Having a new shape sight glass surround and lever design, as shown in Figure 3.

4.6 Having a clear or translucent smoky grey (product reference 95389), bodies and or top cap.

4.7 Having either white, (product reference WT-RP12274), clear or translucent smoky grey, (product reference 95394), 'Standard', (item 5 in Figure 1).

5

CERTIFICATE HISTORY

ISSUE NO.	DATE	DESCRIPTION
1893/1	05 November 1986	Type approval first issued.
1893/1	30 June 1994	Type approval first Renewal
1893/1	10 May 2004	Type approval second Renewal
1893/1 Revision 1	23 September 2008	<p><u>Revision 1 issued</u></p> <p>1893/1 & its amendments and 1893/2 & its amendments are consolidated in to the certificate.</p> <p>Authorised alternatives 4.5, 4.6, 4.7 and 4.8 added.</p>
1893/1 Revision 2	10 October 2014	<p><u>Revision 2 issued</u></p> <p>Certificate validity extended for another 10 years.</p> <p>Change of manufacturer's address</p> <p>Additional text in sections 1 and 2.</p> <p>Amended text in section 3.1 “..and the manufacturer's name, Gaskell & Chambers England, are permanently moulded into the top plate moulding.”</p> <p>Addition of section 3.3.</p> <p>Deletion of Authorised alternatives 4.7, subsequent sections are renumbered accordingly</p> <p>Deletion of Figure 4</p>
1893/1 Revision 3	03 February 2023	<p><u>Revision 3 issued</u></p> <p>National Measurement Office references replaced with Office for Product Safety and Standards.</p> <p>Change of address from:</p> <p style="padding-left: 40px;">Unit A2 Earlswood Trading Estate Poolhead Lane Earlswood West Midlands B94 5EW United Kingdom</p>

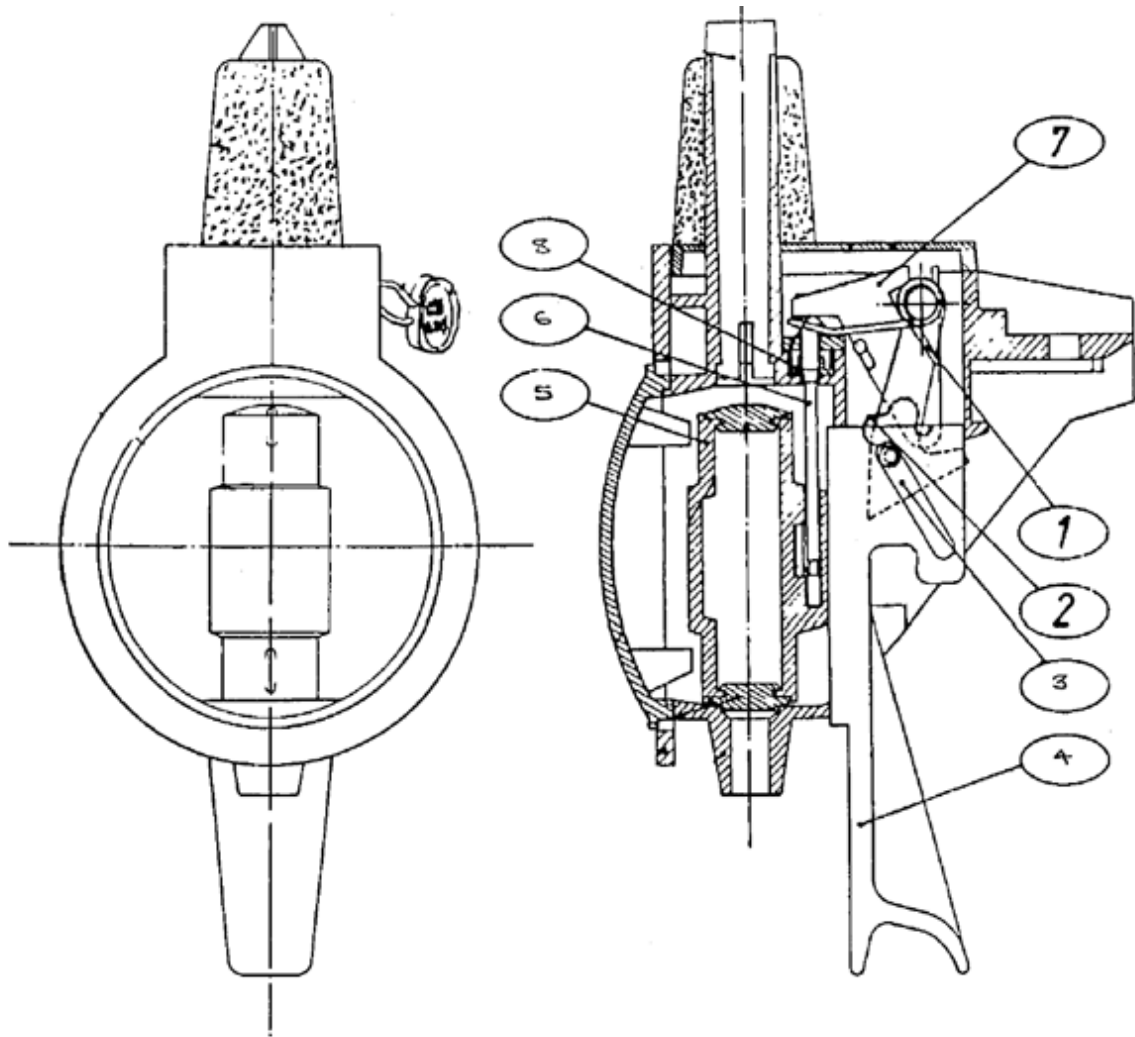


Figure 1 The Pattern

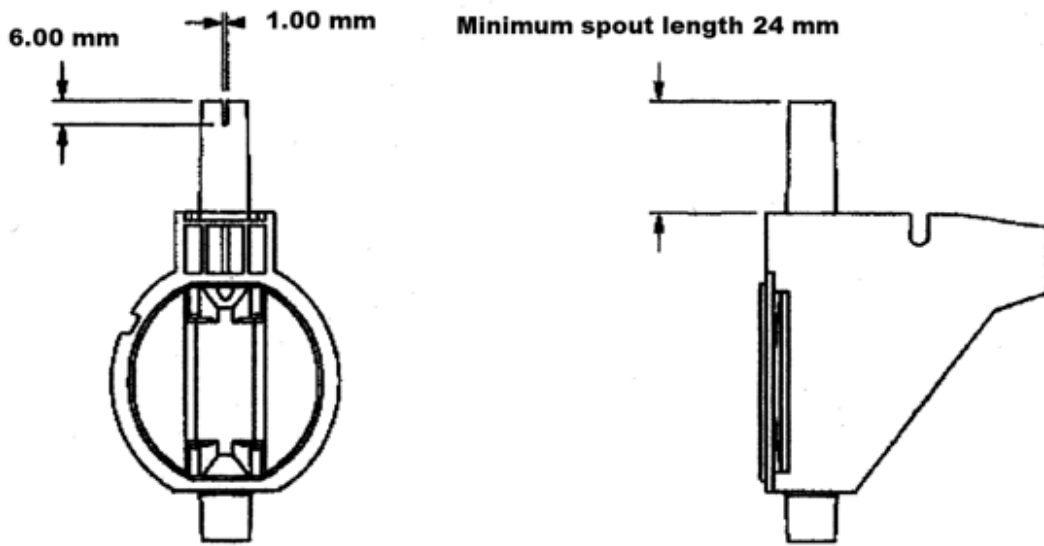
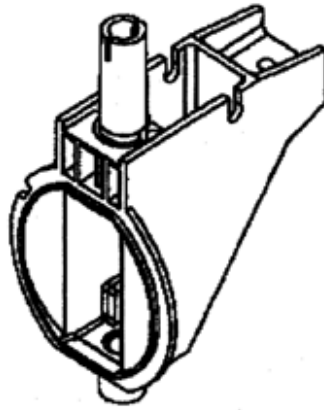


Figure 2 Drawing showing shortened inlet spout

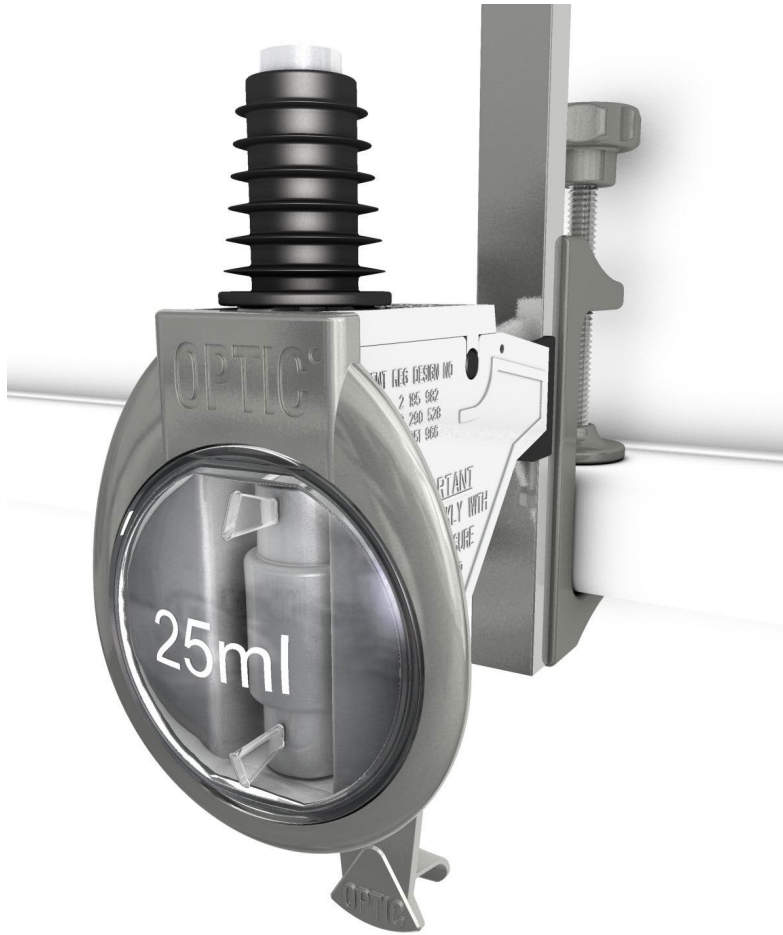


Figure 3 New shaped surround and lever