

## **Air Quality and Dust Monitoring Monthly Report – October 2022**

**Solihull Metropolitan Borough Council**



## Department for Transport

High Speed Two (HS2) Limited has been tasked by the Department for Transport (DfT) with managing the delivery of a new national high speed rail network. It is a non-departmental public body wholly owned by the DfT.

High Speed Two (HS2) Limited,  
Two Snowhill  
Snow Hill Queensway  
Birmingham B4 6GA

Telephone: 08081 434 434

General email enquiries: [HS2enquiries@hs2.org.uk](mailto:HS2enquiries@hs2.org.uk)

Website: [www.gov.uk/hs2](http://www.gov.uk/hs2)

A report prepared by EWCs and MWCCs on behalf of HS2 Ltd.

High Speed Two (HS2) Limited has actively considered the needs of blind and partially sighted people in accessing this document. The text will be made available in full on the HS2 website. The text may be freely downloaded and translated by individuals or organisations for conversion into other accessible formats. If you have other needs in this regard please contact High Speed Two (HS2) Limited.

© High Speed Two (HS2) Limited, 2021, except where otherwise stated.

Copyright in the typographical arrangement rests with High Speed Two (HS2) Limited.

This information is licensed under the Open Government Licence v2.0. To view this licence, visit [www.nationalarchives.gov.uk/doc/open-government-licence/version/2](http://www.nationalarchives.gov.uk/doc/open-government-licence/version/2) **OGI** or write to the Information Policy Team, The National Archives, Kew, London TW9 4DU, or e-mail: [psi@nationalarchives.gsi.gov.uk](mailto:psi@nationalarchives.gsi.gov.uk). Where we have identified any third-party copyright information you will need to obtain permission from the copyright holders concerned.



Printed in Great Britain on paper containing at least 75% recycled fibre.

# Monthly Summary

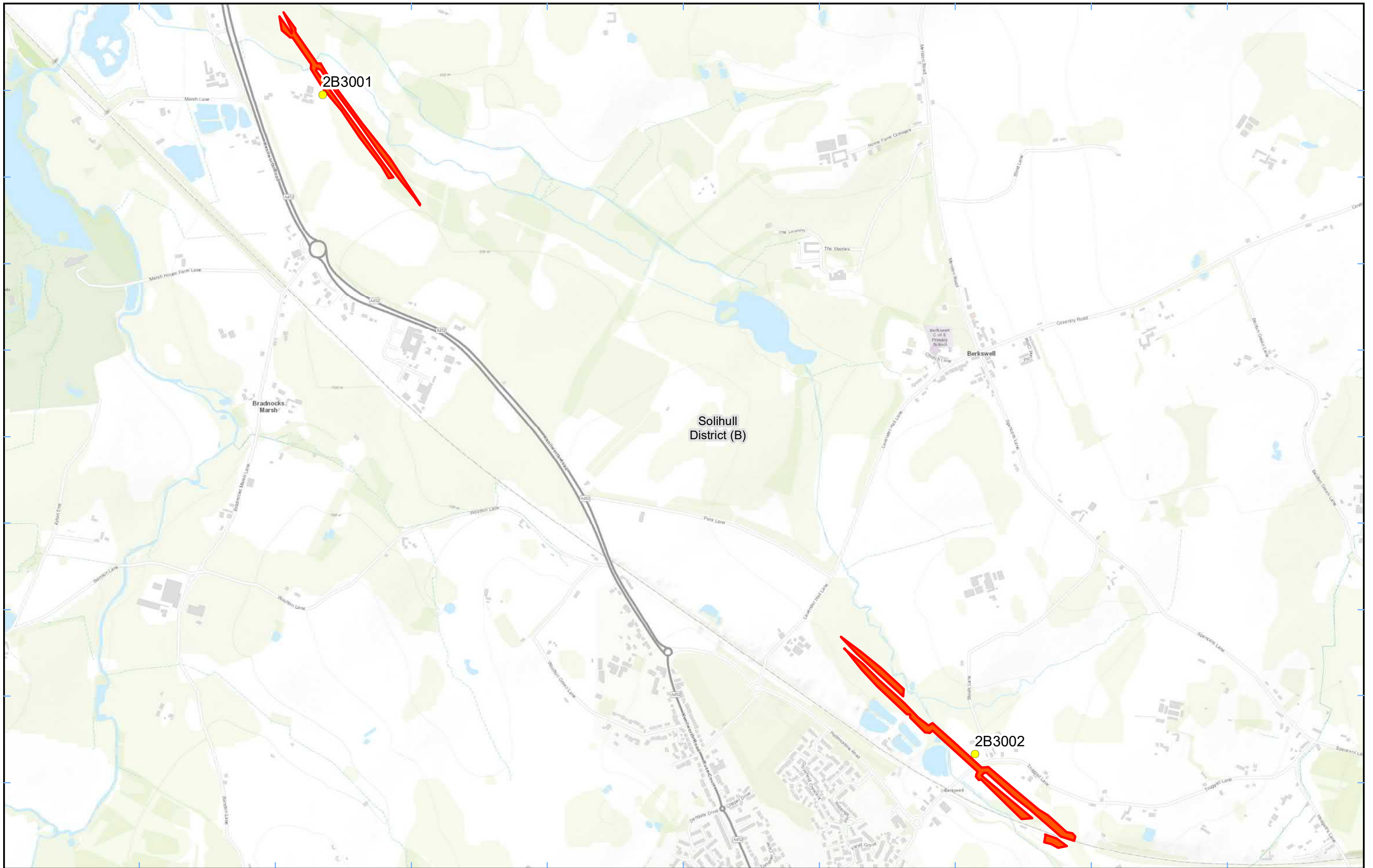
- 1.1.1 This Summary Report is published in fulfilment of commitments detailed in the High Speed Rail (London-West Midlands) Environmental Minimum Requirements, Annex 1: Code of Construction Practice, for the nominated undertaker to present the results of air quality and dust monitoring undertaken in Solihull Metropolitan Borough (SMBC) during October 2022.
- 1.1.2 Figures 1 and 2 in Appendix A indicate the current worksites together with the dust monitoring locations for October 2022.
- 1.1.3 This summary should be read in conjunction with the overview monitoring report monthly available from [www.gov.uk/government/collections/monitoring-the-environmental-effects-of-hs2](http://www.gov.uk/government/collections/monitoring-the-environmental-effects-of-hs2), which highlights: the applicable standards and guidance, as well as the air quality and dust monitoring methodologies to be implemented by nominated undertakers throughout construction.
- 1.1.4 Current works within Sublot 2B3 began in September 2020 and are expected to be completed in the year 2026. The current works within the subplot as presented in Appendix A, Figures 1 and 2, include earthworks consisting of soil stripping for haul road construction, drainage pond construction and stockpiling.
- 1.1.5 Three (3) dust monitors are installed at worksites, where works are underway. These sites returned a medium dust risk rating.
- 1.1.6 Dust monitoring locations and results are presented in Appendix B, Table 1, together with line charts of monthly data from the dust monitors presented in **Error! Reference source not found.** All continuous dust monitoring is undertaken using indicative monitors. Despite being Environment Agency (MCERTS) certified, indicative monitors carry a higher level of uncertainty than reference monitors, and therefore cannot be strictly compared with Air Quality Standards for human health and the environment. The purpose of the monitoring undertaken is to ensure the effectiveness of the on-site mitigations.
- 1.1.7 The trigger level for PM<sub>10</sub> concentrations of 190 µg/m<sup>3</sup>, over a 1-hour period, in accordance with the updated guidance document '*Guidance on Monitoring in the Vicinity of Demolition and Construction Sites – (October 2018)*' has been applied.
- 1.1.8 There were no (0) dust trigger alerts recorded during the monitoring period (October 2022).
- 1.1.9 Data capture was below 90% for the CHRU001 monitor, due to power supply issues. The solar panels were stolen on the evening of the 21<sup>st</sup> September 2022, and power supply was lost on the 22<sup>nd</sup> September 2022 when the back-up batteries ran out. The incident is

being investigated and possible changes made to reduce the likelihood of theft in the future. Power will be restored once replacement solar panels have been procured.

1.1.10 There were no (0) complaints received during this reporting period (October 2022).

# Appendix A – Worksites and Monitoring Locations

Figures 1 and 2: Worksites and monitoring locations within the SMBC



- Legend**
- Dust Monitor
  - ▬ Worksite
  - District Borough Unitary Boundaries

Service Layer Credits: Sources: Esri, HERE, Garmin, Intermap, increment P Corp., GEBCO, USGS, FAO, NPS, NRCAN, GeoBase, IGN, Kadaster NL, Ordnance Survey, Esri Japan, METI, Esri China (Hong Kong), (c) OpenStreetMap contributors, and the GIS User Community

Map Number
Map Name <b>Worksite and Monitoring Locations In SMBC (Sheet 1)</b>
<b>Solihull Metropolitan Borough</b>



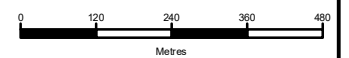
HS2 Ltd accept no responsibility for any circumstances, which arise from the reproduction of this map after alteration, amendment or abbreviation or if it is issued in part or issued incomplete in any way.



Registered in England. Registration number 06791686.  
Registered office: 2 Snowhill, Queensway,  
Birmingham B4 6GA.

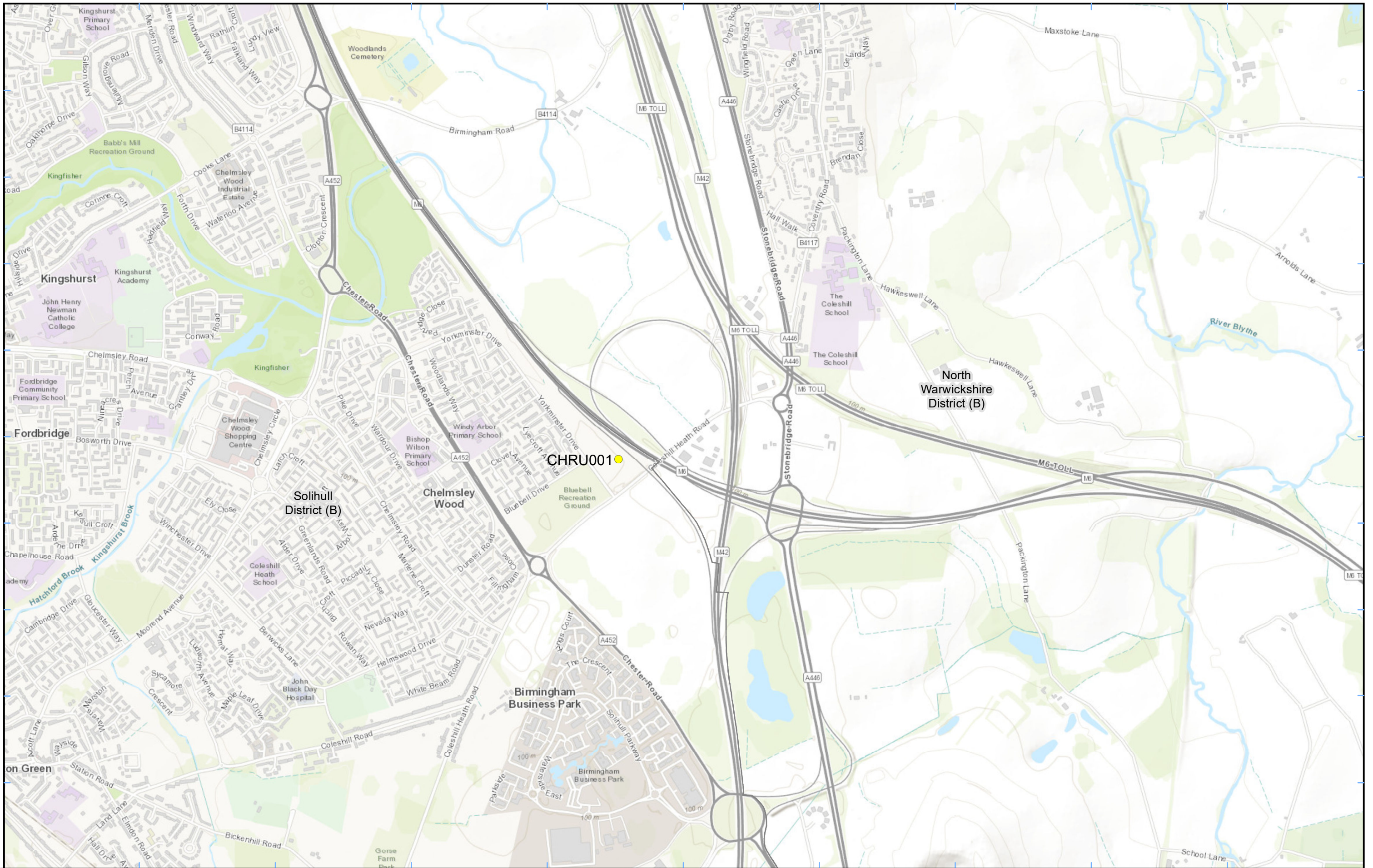
© Crown copyright and database rights 2021.  
Ordnance Survey Licence Number 100049190.

Scale at A3: 1:12,000



Doc Number:


Date: 30/11/21



**Legend**  
 ● Dust  
 □ District Borough Unitary Boundaries

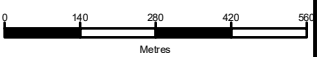
Service Layer Credits: Sources: Esri, HERE, Garmin, Intermap, increment P Corp., GEBCO, USGS, FAO, NPS, NRCAN, GeoBase, IGN, Kadaster NL, Ordnance Survey, Esri Japan, METI, Esri China (Hong Kong), (c) OpenStreetMap contributors, and the GIS User Community

Map Number  
 Map Name  
**Monitoring Locations  
 In SMBC (Sheet 2)**  
 Solihull Metropolitan Borough


 HS2 Ltd accept no responsibility for any circumstances, which arise from the reproduction of this map after alteration, amendment or abbreviation or if it is issued in part or issued incomplete in any way.

Registered in England. Registration number 06791686.  
 Registered office: 2 Snowhill, Queensway,  
 Birmingham B4 6GA.

© Crown copyright and database rights 2022.  
 Ordnance Survey Licence Number 100049190.

Scale at A3: 1:14,000  


Doc Number: \_\_\_\_\_ Date: 19/08/22

## Appendix B – Dust Monitoring Results

Table 1: Dust Monitoring Locations and October 2022 Results

Monitoring site ID	Coordinates (X,Y)	Location description	Dust risk rating for site	Monitoring site active during period	Change to site since previous period report	Mean 1-hour PM <sub>10</sub> concentration (µg/m <sup>3</sup> )	Minimum 1-hour PM <sub>10</sub> concentration (µg/m <sup>3</sup> )	Maximum 1-hour PM <sub>10</sub> concentration (µg/m <sup>3</sup> )	Number of 1-hour periods exceeding trigger level of 190 µg/m <sup>3</sup>	Data capture Month (%)
2B3001	422322, 280034	Sublot 2B3, at Marsh Farm	M	Yes	No	4.3	0.5	26.8	0	99.9
2B3002	424601, 277729	Sublot 2B3, at Cherry Tree Cottage	M	Yes	No	4.1	0.1	38.2	0	99.5
CHRU001	419300, 286793	Bluebell Drive, Coleshill Heath Road Underbridge	M	-	-	-	-	-	-	-



Figure 2: Construction dust 1-hour mean indicative PM<sub>10</sub> concentration for all dust monitors

