



# Department for Levelling Up, Housing & Communities

## Planning applications in England:

Factsheet

July to September 2022

### Residential and commercial applications granted (major and minor):

Residential  
**8,900** - 8% from 2021 Q3

Commercial  
**1,900** - 6% from 2021 Q3

### Householder developments:

Decided  
**55,600** - 18% from 2021 Q3

As a proportion of all applications decided  
**57%** - 4 pp from 2021 Q3

### Permitted development rights (PDRs):

Number of applications:

Prior approval not required  
**3,700** - 26% from 2021 Q3

Granted  
**1,700** - 23% from 2021 Q3

Refused  
**1,700** - 19% from 2021 Q3

### County matter applications

Decided  
**158** + 4% from 2021 Q3

Granted  
**145** + 4% from 2021 Q3

pp Percentage point

### Number of applications:

Received

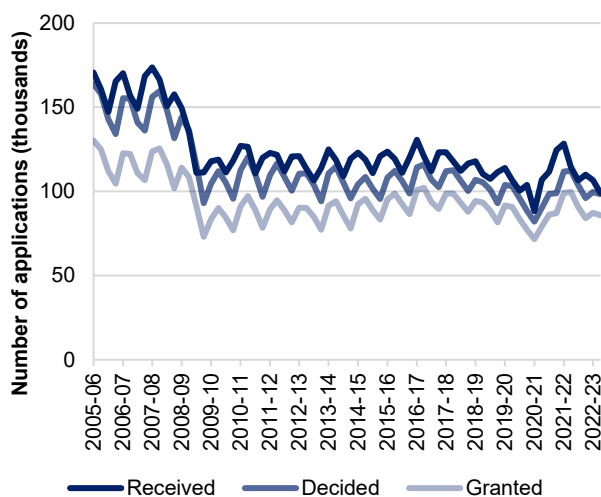
**99,200** - 13% from 2021 Q3

Decided

**98,300** - 12% from 2021 Q3

Granted

**85,700** - 14% from 2021 Q3



### Percentage of applications:

Granted

**87%** - 2 pp from 2021 Q3

### The percentage of applications decided in time by development type:

Major applications

**87%** + 2 pp from 2021 Q3

Minor applications

**82%** + 2 pp from 2021 Q3

Other applications

**86%** + 2 pp from 2021 Q3