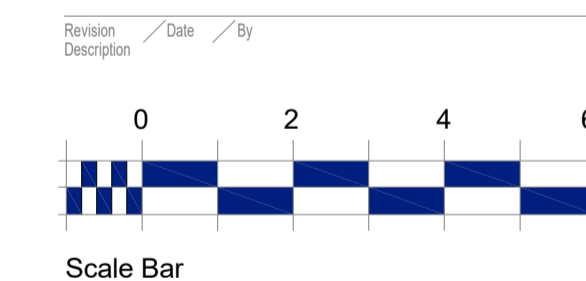
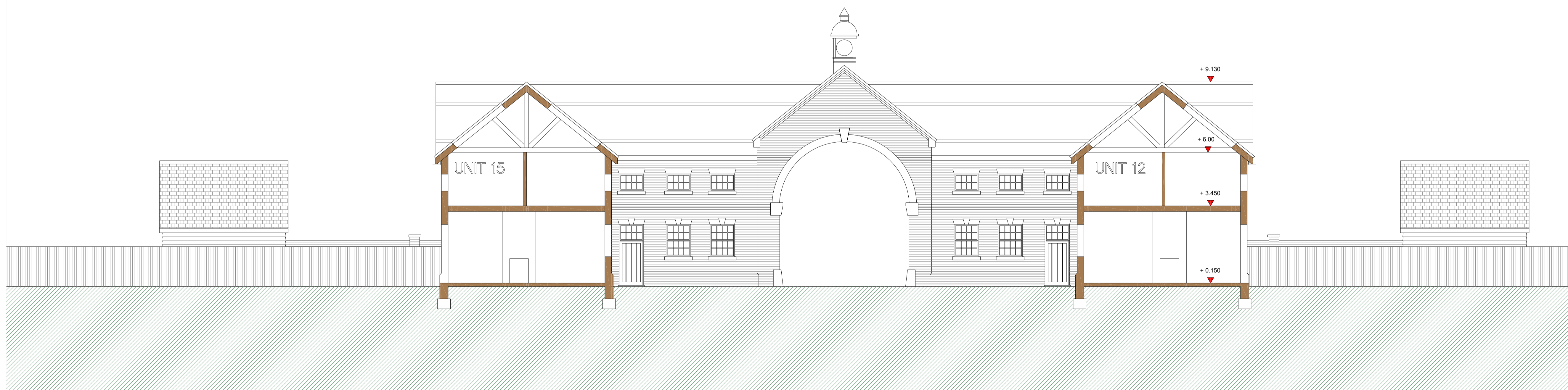


- UNIT 1
EGL - 88.32
GF FFL - 88.47
RL - 97.82
- UNIT 2
EGL - 88.51
GF FFL - 88.66
RL - 98.01
- UNITS 3 - 6
EGL - 87.43
GF FFL - 88.06
RL - 97.41
- UNIT 7
EGL - 87.69
GF FFL - 87.82
RL - 92.10
- UNIT 8
EGL - 87.69
GF FFL - 87.99
RL - 94.72
- UNIT 9
EGL - 87.80
GF FFL - 88.10
RL - 97.39
- UNITS 10 - 17
EGL - 85.00
GF FFL - 85.70
RL - 94.83

CROSS SECTION UNITS 10 - 13

EGL - Existing Ground Level
GF FFL - Ground floor FFL
RL - Ridge level



CROSS SECTION UNITS 15 - 12

ANTHONY JANE
ARCHITECTURE & INTERIORS
1A Eves Corner, Danbury, ESSEX, CM3 4QF
E - technical@anthonyjane.com

| | |
|----------------|---|
| Project | CANFIELD MOAT HIGH CROSS LANE WEST LITTLE CANFIELD CM6 1TD |
| Client | Mr ANDREW SMITH |
| Drawing | PROPOSED UNITS 10-17 PROPOSED CROSS SECTIONS |
| Drawing Use | Date Oct 2022 |
| Information | Scale 1:100 @ A1 |
| Drawing number | Rev 10949/A1/32 --- |