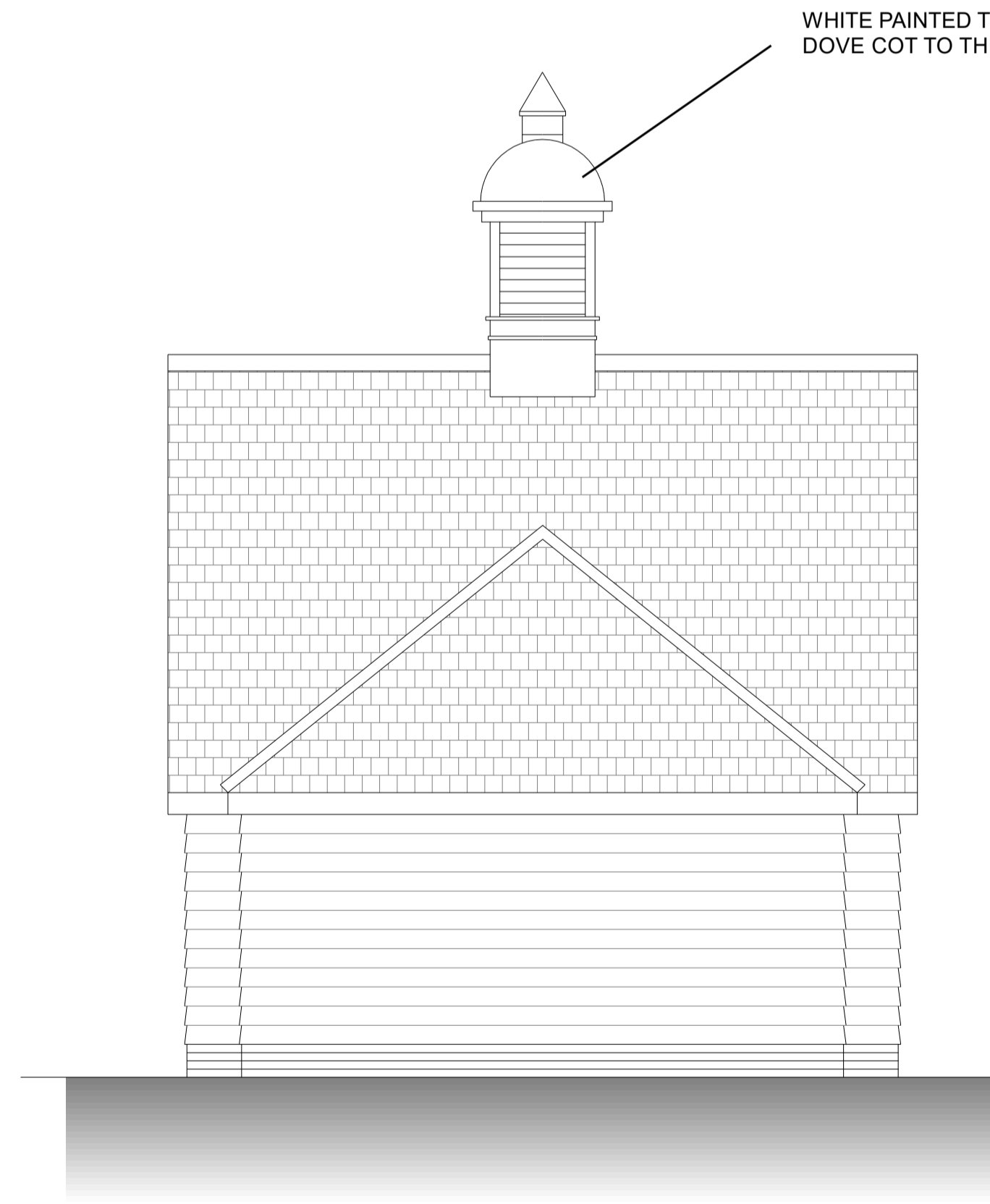


SOLAR PANELS INSTALLED WITHIN ROOF FINISH COMPLETE WITH BLACK ADGE TRIMS

WHITE PAINTED TIMBER CUPOLA WITH DOVE COT TO THREE FACES AND CLOCK FACING COURTYARD

BULLS EYE OPENING TO PROVIDE ENTRANCE TO SAFE BATT ROOSTING AREA

REAR ELEVATION



WHITE PAINTED TIMBER CUPOLA WITH DOVE COT TO THREE FACES AND CLOCK FACING COURTYARD

END ELEVATION

FINISHES SCHEDULE

Roof to be finished with eternit slate tiles complete with Eternit slate dry ridge.

White painted timber cupola to be specifically designed and manufactured in timber with lead flashing to top dome in traditional form. The cupola to have a dovescot on three sides with the fourth housing the clock facing the courtyard.

Solar panels to be installed to the rear elevation and to be installed "within" the roof finish to ensure the top of the solar panels are in line with the adjoining slate roof.

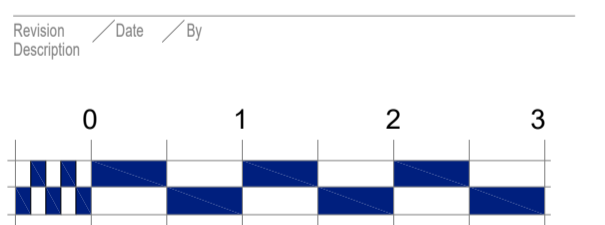
External walls to the wings to be facing brick plinth in bricks to match main house. From top of plinth to eaves, 175mm feather edge board stained black.

External wall to the central section to be facing brickwork full height and includes stepped corbell detail to verge and eaves.

All eaves and soffit to be timber a stained black.

All gutters and down pipes to be black Upvc

All garage doors to be solid timber



Scale Bar
ANTHONY JANE
 ARCHITECTURE & INTERIORS
 1A Eves Corner, Danbury, ESSEX, CM3 4QF
 E: technical@anthonyjane.com

Project	CANFIELD MOAT HIGH CROSS LANE WEST LITTLE CANFIELD CM6 1TD		
Client	Mr ANDY SMITH		
Drawing	GARAGE BLOCK G2 - G7 REAR AND SIDE ELEVATIONS		
Drawing Use	Date	Mar 2022	
Information	Scale	1:50 @ A1	
Drawing number	10949/A1/21		Rev ---