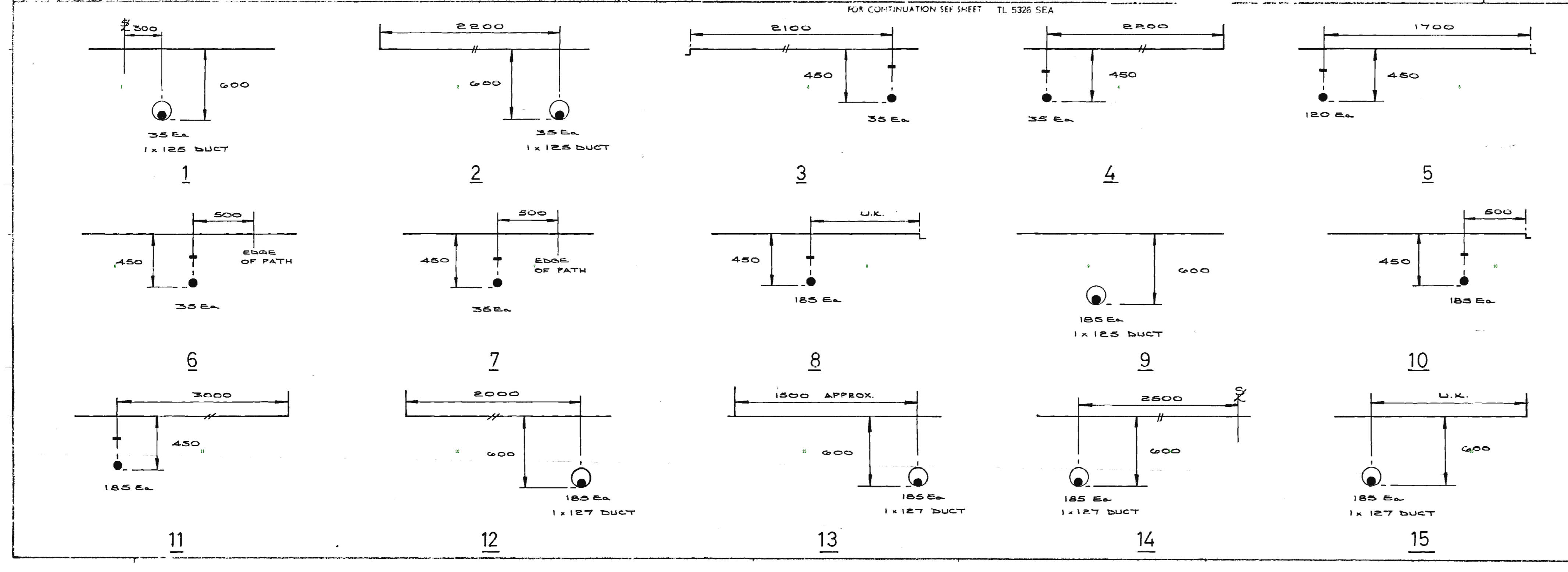
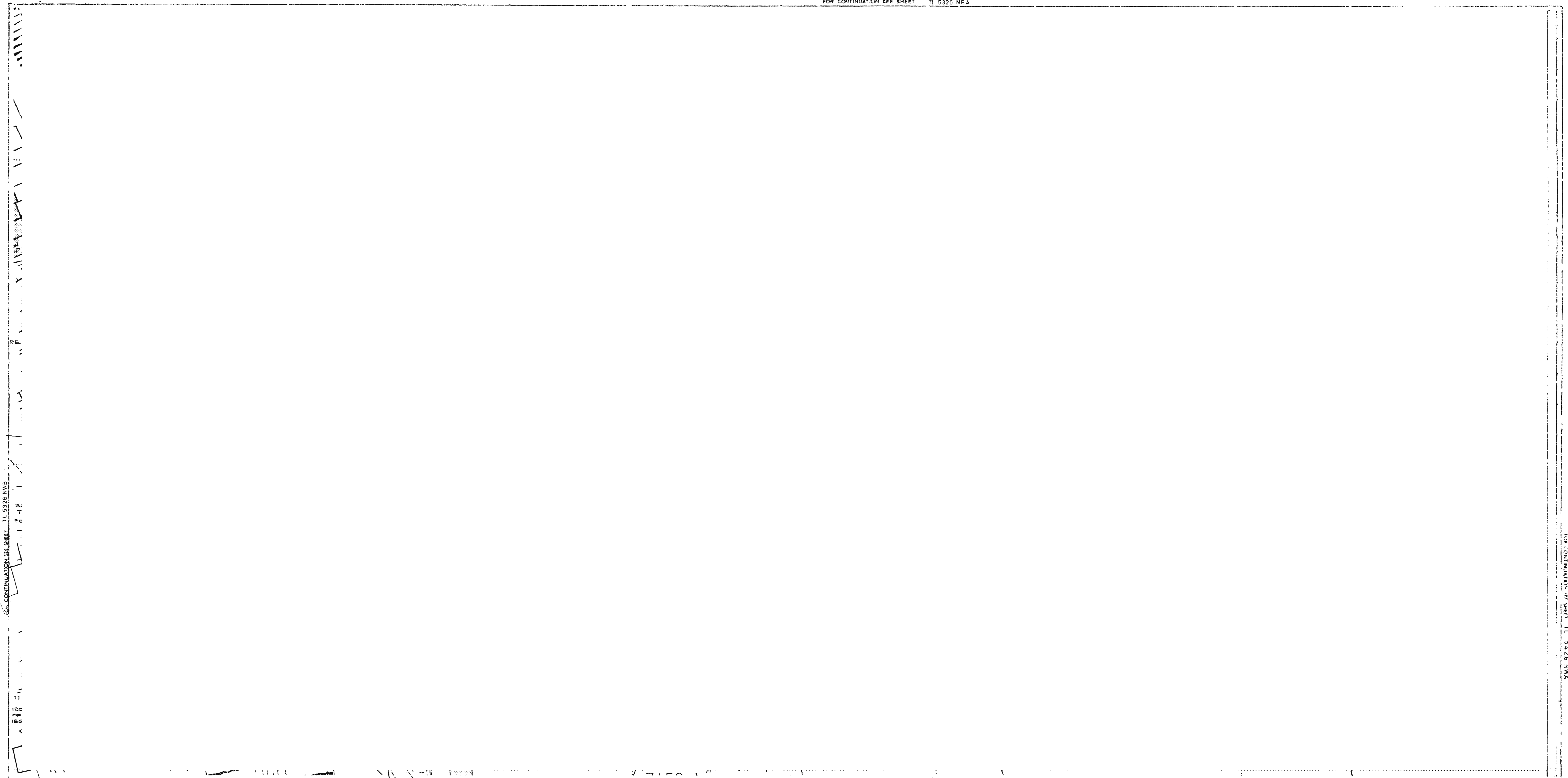


SO

TL5326NEB 1:500 IV

FOR CONTINUATION SEE SHEET TL 5326 NEA



PILOT CABLES AND HIGH VOLTAGE CABLES

Serial numbers refer to this sheet only and lengths are to sheet edge

No	kV	Size	Cores	Designation	Lengths		No	kV	Size	Cores	Designation	Lengths	
					metres	feet						metres	feet
													Total length
													Total length

NOTES: (1) FOR FULL DETAILS OF HV CABLES REFERENCE SHOULD BE MADE TO THE PRIMARY RECORDS
 (2) E-DIMENSIONS ONE - SIDE - DENOTES ALPHA TYPE
 (3) ALL DEPTHS SHOWN ARE AS LAID - SUBJECT TO FINAL LEVELS
 (4) U.K. DENOTES UNKNOWN

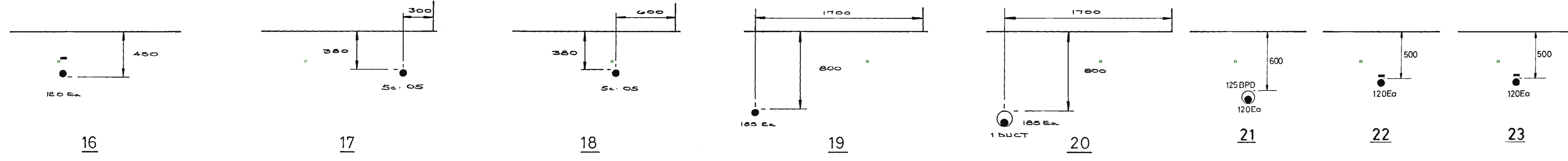
eastern electricity


500 SCALE LV/G MAINS

LOCATION: **ELSENHAM**

DIMENSIONS IN MILLIMETRES	*PRODUCED FROM OR BASED UPON THE COASTGUARD SURVEY MAP WITH THE SANCTION OF THE CONTROLLER OF H.M. STATISTICS CROWN COPYRIGHT RESERVED	SERVICES FOR DETAILS OF SERVICE CABLES REFERENCE SHOULD BE MADE TO THE SERVICE CARDS IN THE DISTRICT OFFICE	SHEET NO	ISSUE	DATE
			TL 5326 NEB SUPPLEMENTARY SHEET NO TL 5326 NEB/1	B	OCT94

S1



eastern electricity 	
SCALE	N.T.S.
LOCATION	ELSENHAM
SHEET NO.	TL 5326 NEB 1
ISSUE	B
DATE	OCT94
SUPPLEMENTARY SHEET NO.	

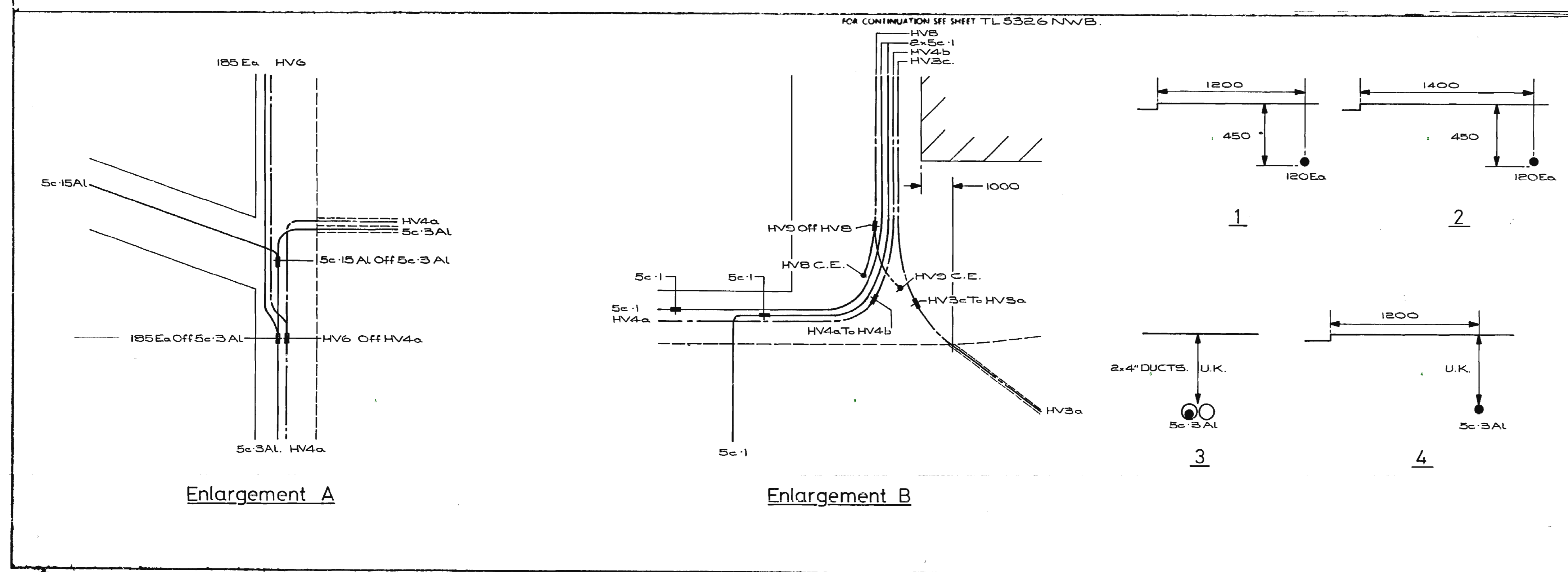
REPRODUCED FROM OR BASED UPON THE
ORDNANCE SURVEY MAP WITH THE PERMISSION
OF THE CONTROLLER OF HM STATIONERY
OFFICE
CROWN COPYRIGHT RESERVED.

SERVICES
FOR DETAILS OF SERVICE CABLES
REFERENCE SHOULD BE MADE TO
THE SERVICE CARDS IN THE
LOCAL OFFICE.

44444 10/94

FOR CONTINUATION SEE SHEET TL5326NWA

FOR CONTINUATION SEE SHEET TL5326NWA



PILOT CABLES AND HIGH VOLTAGE CABLES													
Serial numbers refer to this sheet only and lengths are to sheet edge													
No	kV	Size	Cores	Designation	Length		No	kV	Size	Cores	Designation	Length	
					m	ft						m	ft
HVI	11	15AL	3	BROOM FARM EAST - BROOM FM. TR	045	045							
HV3a	11	06	3	ELSENHAM ST - "	250	250							
HV3b	11	15AL	3	" - "	035	035							
HV3c	11	15AL	3	ELSENHAM SECTION TO BROOM FM. TR	005	005							
HV4a	11	15AL	3	" - BROOM NURS.	005	005							
HV4b	11	15AL	3	" - "	045	045							
HV4c	11	15AL	3	ELSENHAM ST - BROOM NURSERY	045	045							
HV6	11	55mm	3	GOLD CLOSE lead HV4a	110	110							
HV7	11	55mm	3	" - CAMB DIST.	050	050							
HV8	11	15AL	3	ABANDONED	005	005							
HV9	11	06	3	"	010	010							
Total length							Total length						

NOTES (1) FOR FULL DETAILS OF 33 kV CABLES REFERENCE SHOULD BE MADE TO THE PRIMARY RECORDS
 (2) E DENOTES CNE CABLE & DENOTES ALPEX TYPE
 (3) RLL DEPTHS SHOWN ARE AS LAID, SUBJECT TO FINAL LEVELS
 (4) U.K. DENOTES UNKNOWN

eastern electricity

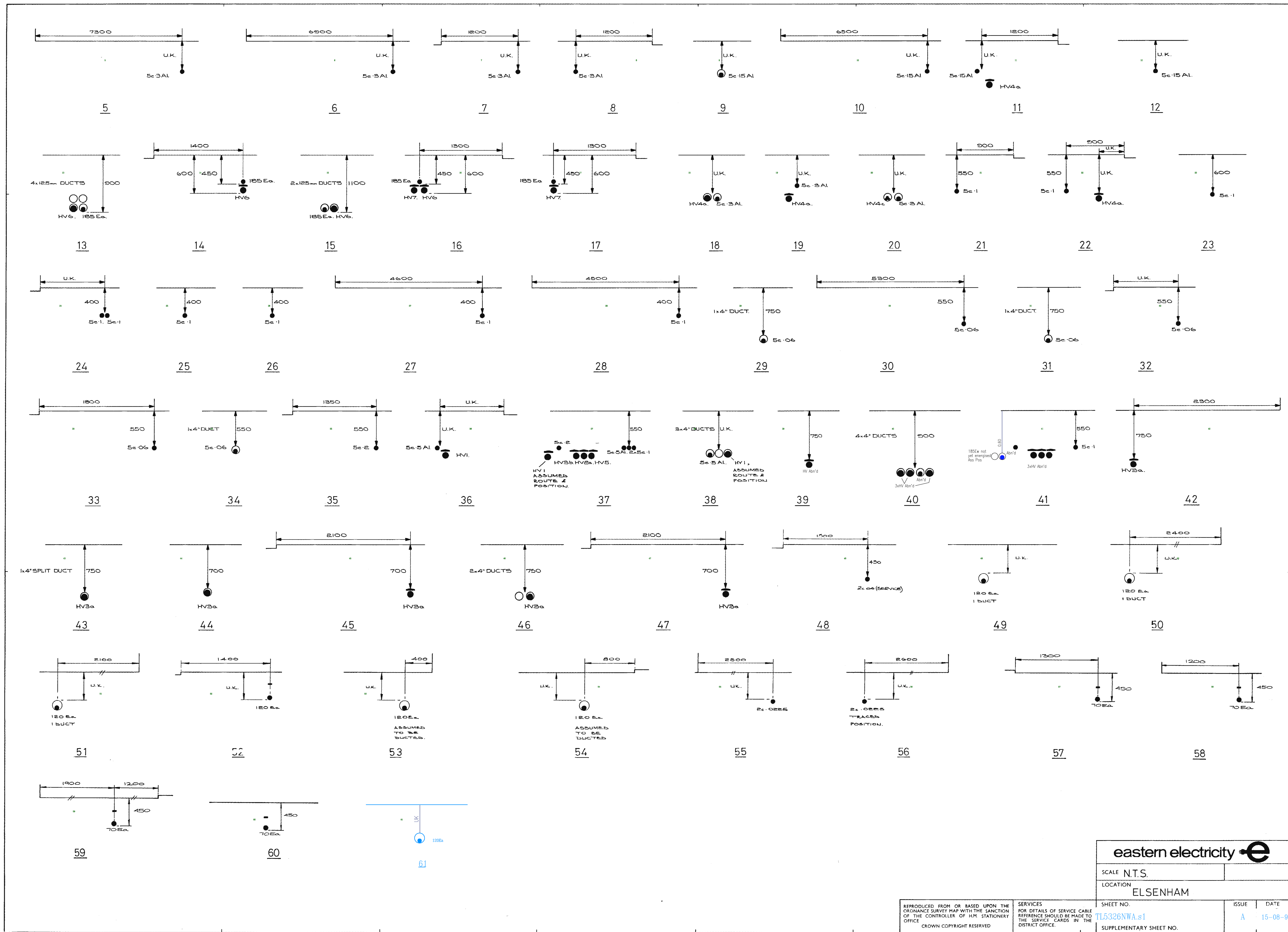
1 : 500 SCALE U/G MAINS
 LOCATION ELSENHAM

SHEET NO TL5326NWA.S0
 SUPPLEMENTARY SHEET NO

ISSUE A
 DATE 15-08-97

DIMENSIONS IN MILLIMETRES
 REPRODUCED FROM OR BASED UPON THE ORDINANCE SURVEY MAP WITH THE SANCTION OF THE CONTROLLER OF HM STATIONERY OFFICE
 CROWN COPYRIGHT RESERVED

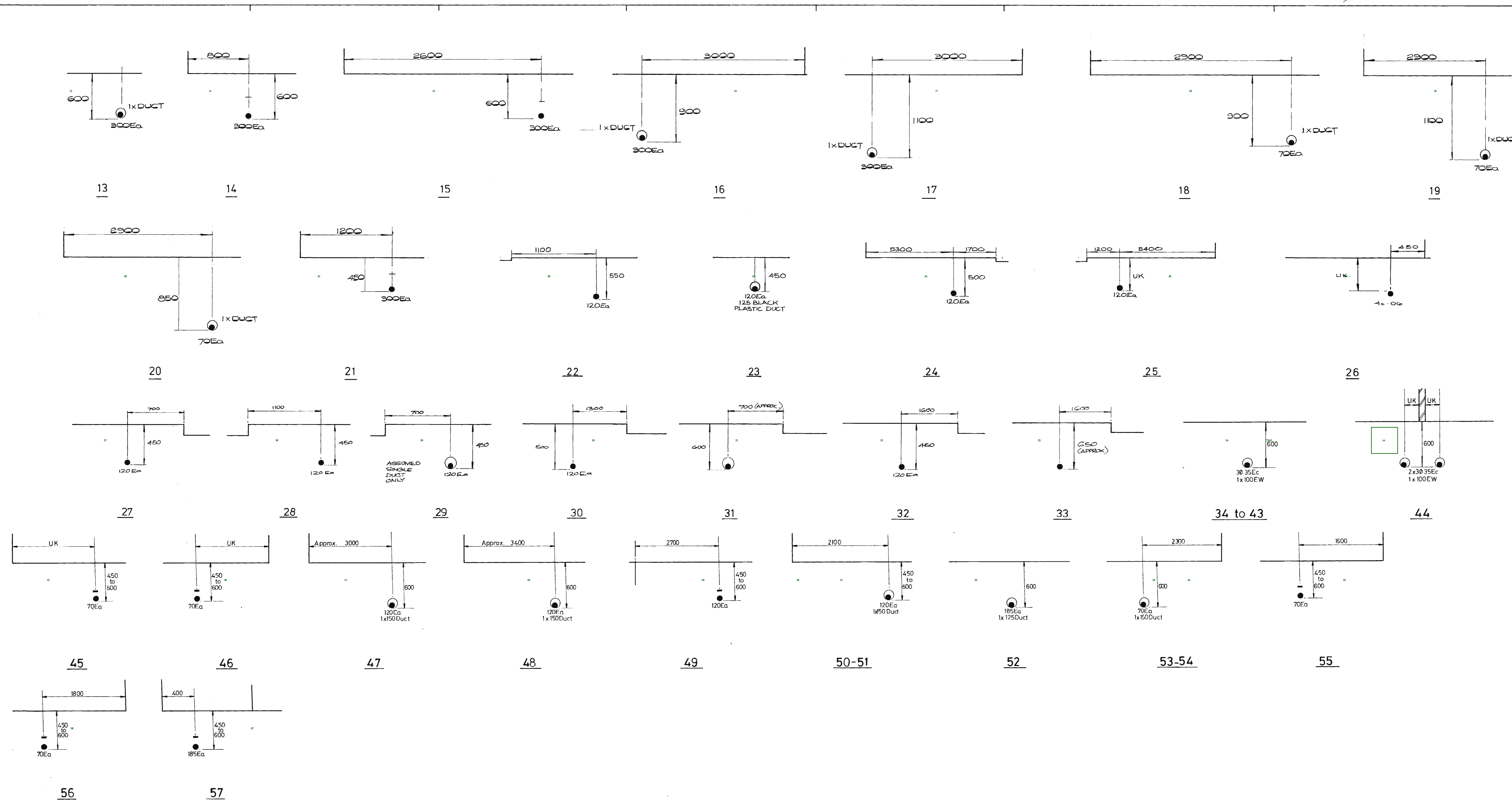
SERVICES FOR DETAILS OF SERVICE CABLE REFERENCE SHOULD BE MADE TO THE SERVICE CARDS IN THE DISTRICT OFFICE



eastern electricity 

SCALE N.T.S.
LOCATION ELSENHAM

REPRODUCED FROM OR BASED UPON THE ORDINANCE SURVEY MAP WITH THE SANCTION OF THE CONTROLLER OF H.M. STATIONERY OFFICE CROWN COPYRIGHT RESERVED	SERVICES FOR DETAILS OF SERVICE CARE REFERENCE SHOULD BE MADE TO THE SERVICE CARDS IN THE DISTRICT OFFICE	SHEET NO. TL5326NWA.s1	ISSUE A	DATE 15-08-97
		SUPPLEMENTARY SHEET NO.		



eastern electricity 

SCALE	
LOCATION	ELSENHAM
SHEET NO.	TL5327SWB/1
ISSUE	D
DATE	JULY90
SUPPLEMENTARY SHEET NO.	

REPRODUCED FROM OR BASED UPON THE ORDNANCE SURVEY MAP WITH THE SANCTION OF THE CONTROLLER OF H.M. STATIONARY OFFICE. CROWN COPYRIGHT RESERVED.

SERVICES FOR DETAILS OF CABLE SERVICE REFERENCE SHOULD BE MADE TO THE SERVICE CARDS IN THE LOCAL OFFICE.

1/2/90/2007

S2



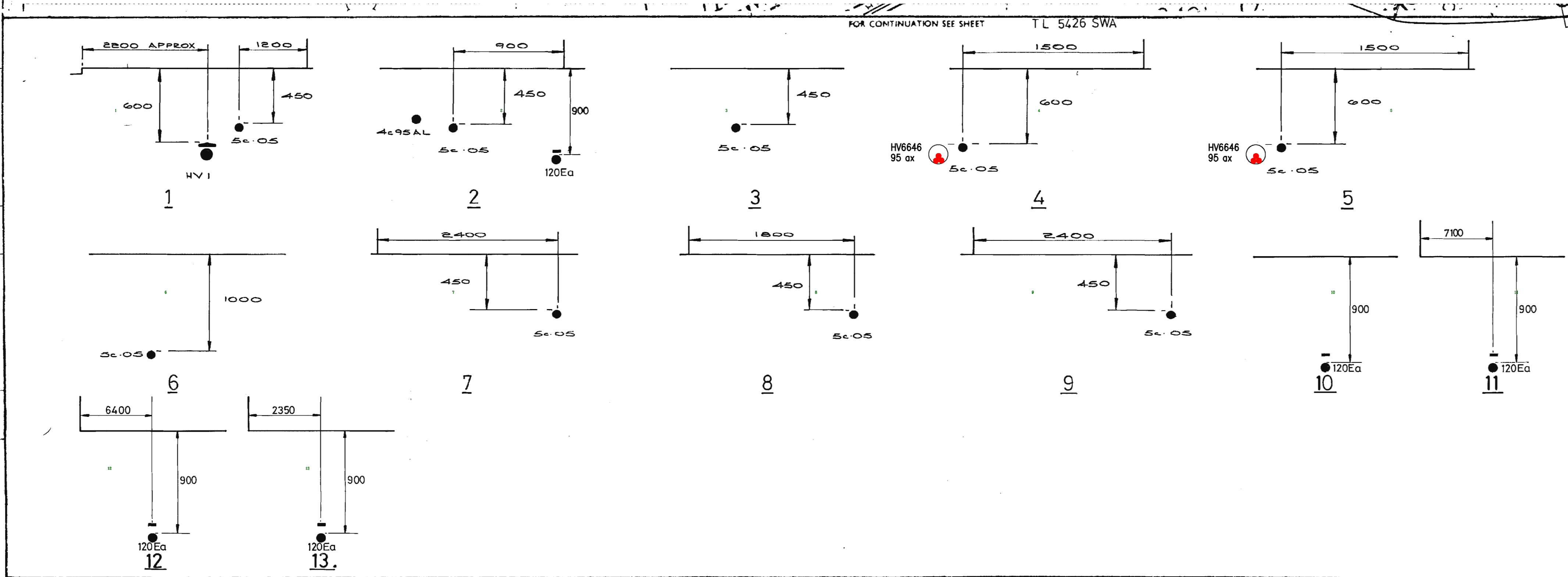
SO

TL5426NWB 1:500 LV

FOR CONTINUATION SEE SHEET TL 5426 NWB

FOR CONTINUATION SEE SHEET TL 5426 NWA

FOR CONTINUATION SEE SHEET TL 5426 NED



PILOT CABLES AND HIGH VOLTAGE CABLES
Serial numbers refer to this sheet only and lengths are to sheet edge

No.	kV	Size	Cores	Designation	Length metres	No.	kV	Size	Cores	Designation	Length metres
	HV1	95AL	3	ELSENHAM PLACE TELLS							
	HV646	11	95ax	3xc							
				ELSENHAM - POLE 6/1							29
				Elsenham Place to Elsenham Landfill Generator							
					Total length						Total length

NOTES (1) FOR FULL DETAILS OF 33 kV CABLES REFERENCE SHOULD BE MADE TO THE PRIMARY RECORDS
(2) E DENOTES CNE CABLE & DENOTES ALPEX TYPE
(3) ALL DEPTHS SHOWN ARE AS Laid, SUBJECT TO FINAL LEVELS

eastern electricity

1:500 SCALE U/G MAINS
LOCATION: ELSENHAM

SHEET NO: TL 5426 NWB
ISSUE: A
DATE: FEB 87

DIMENSIONS IN MILLIMETRES
REPRODUCED FROM OR BASED UPON THE ORDNANCE SURVEY MAP WITH THE SANCTION OF THE CONTROLLER OF H.M. STATIONERY OFFICE. COPYRIGHT RESERVED
SERVICES FOR DETAILS OF SERVICE CABLE REFERENCE SHOULD BE MADE TO THE SERVICE CABLES IN THE DISTRICT OFFICE