

Figure 39

Stansted Mountfitchet - 2027 Future Baseline (sensitivity test) Traffic Flows 08:00-09:00



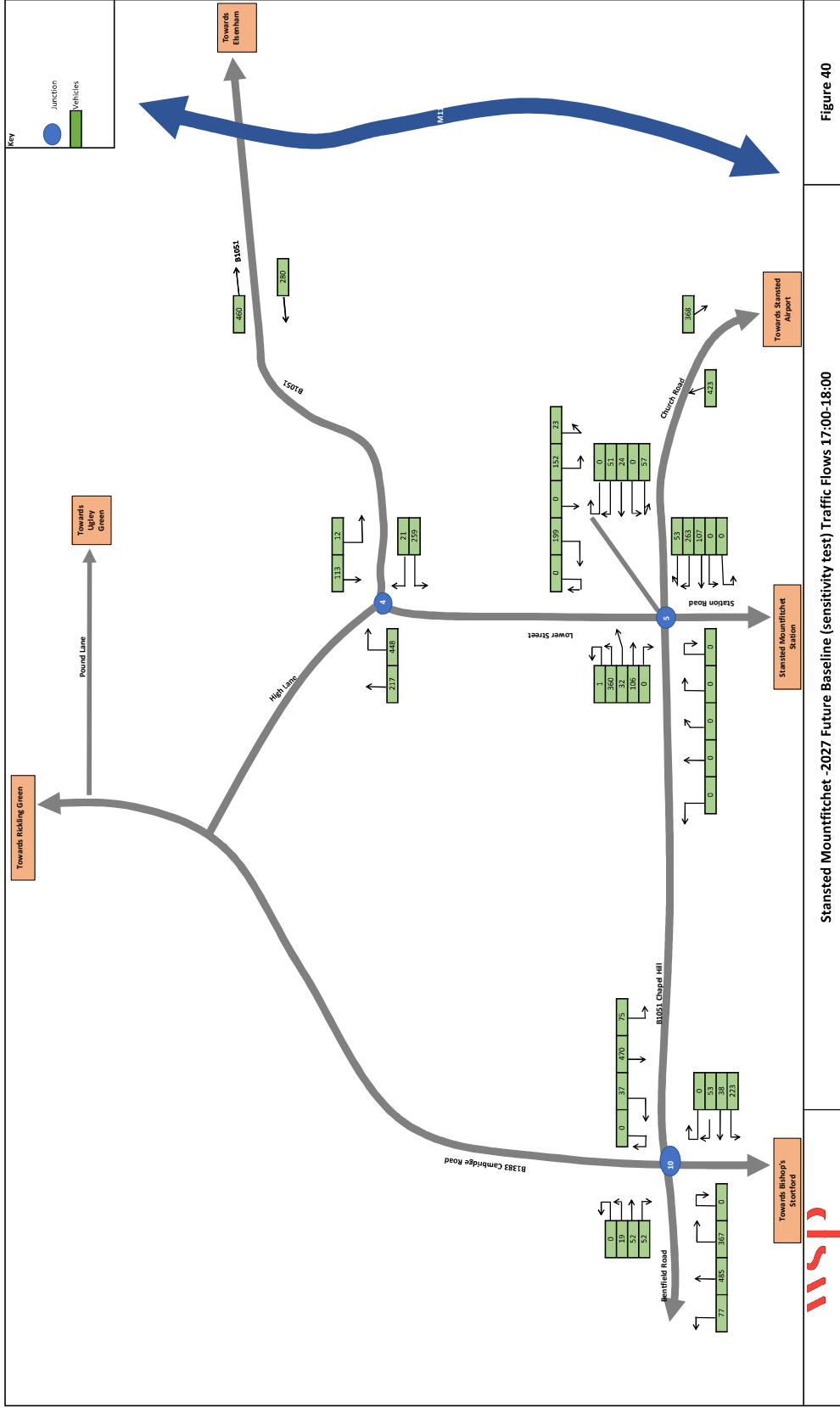
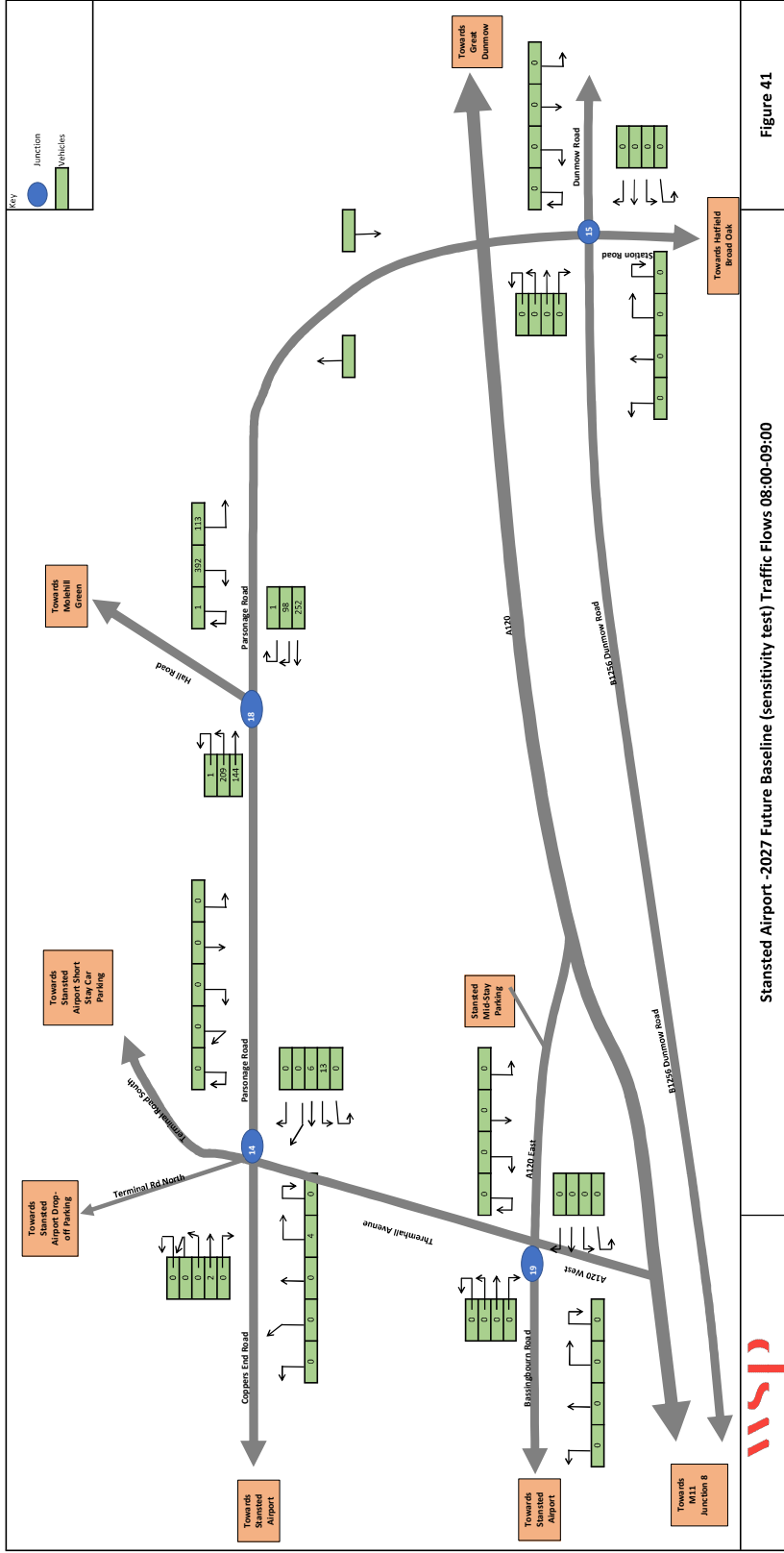
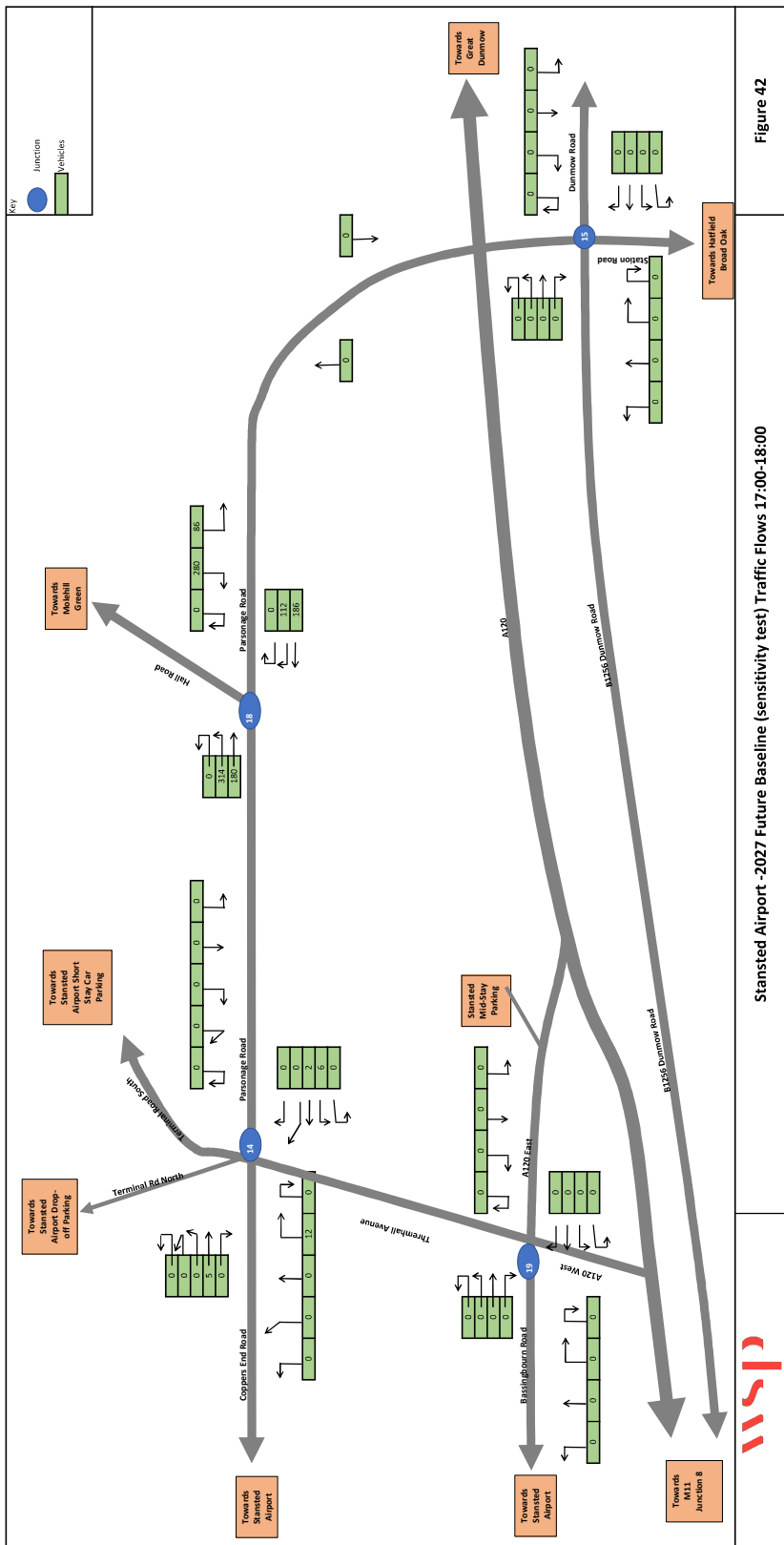


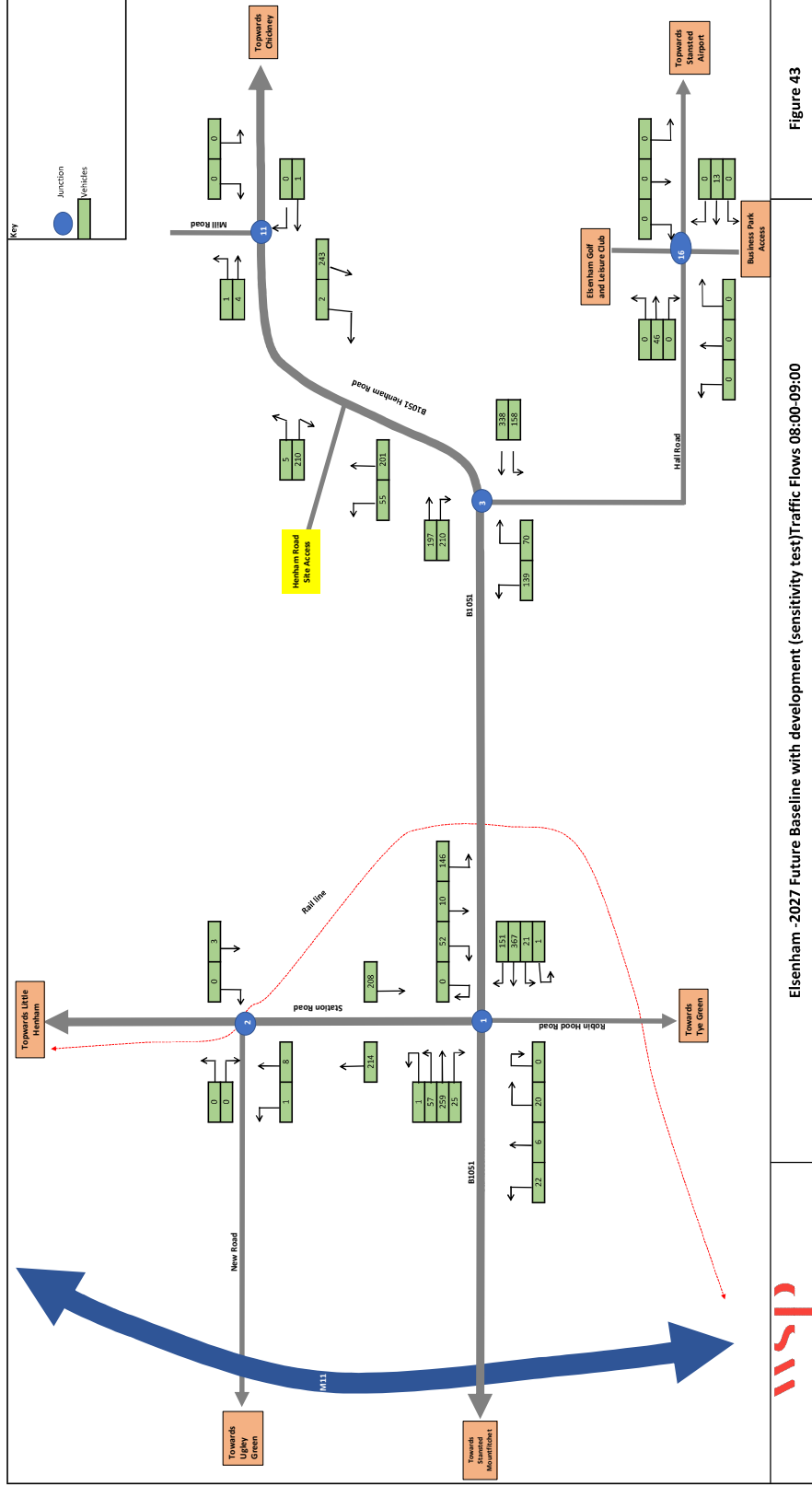
Figure 40

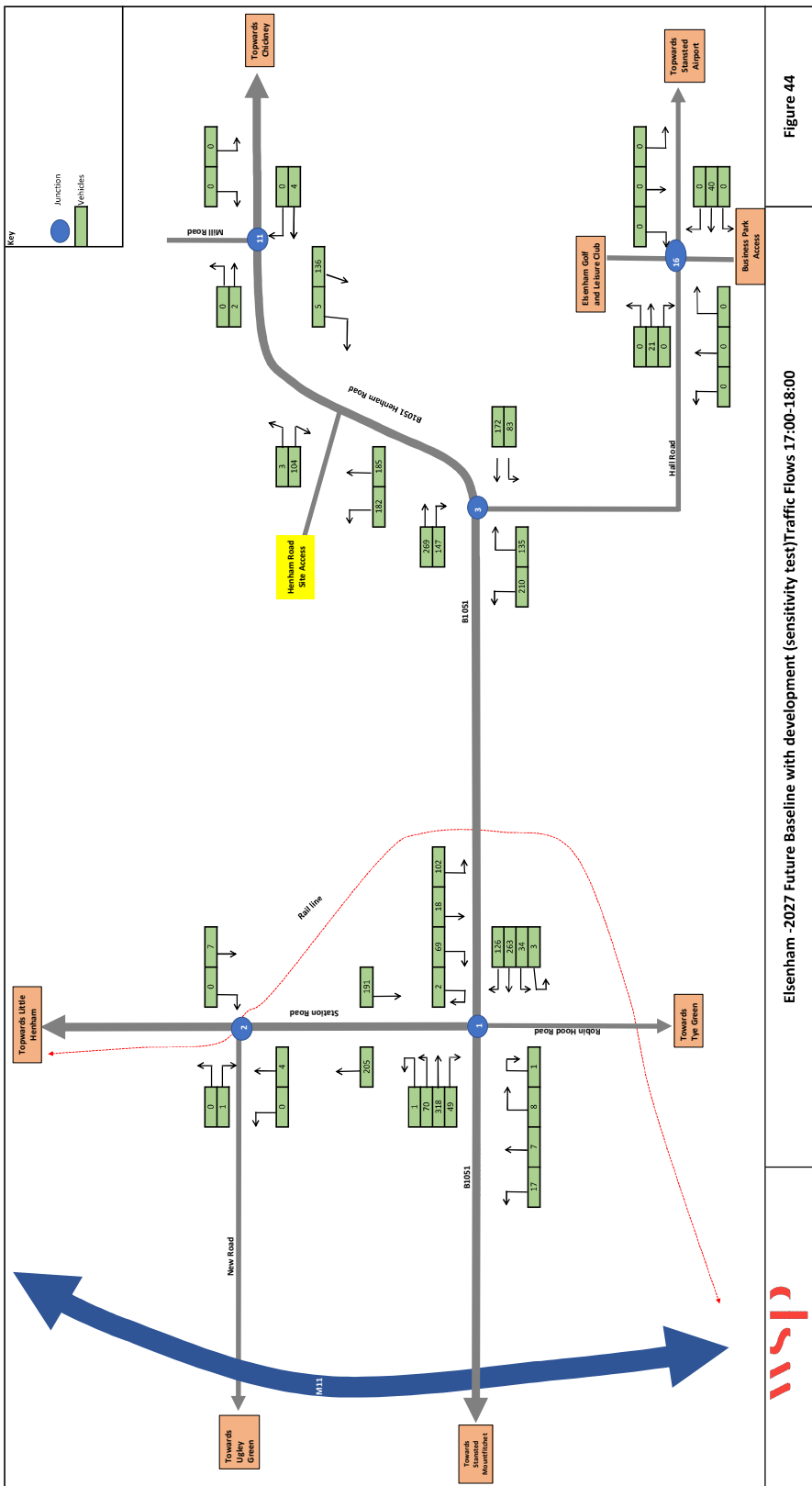
Stansted Mountfitchet - 2027 Future Baseline (sensitivity test) Traffic Flows 17:00-18:00

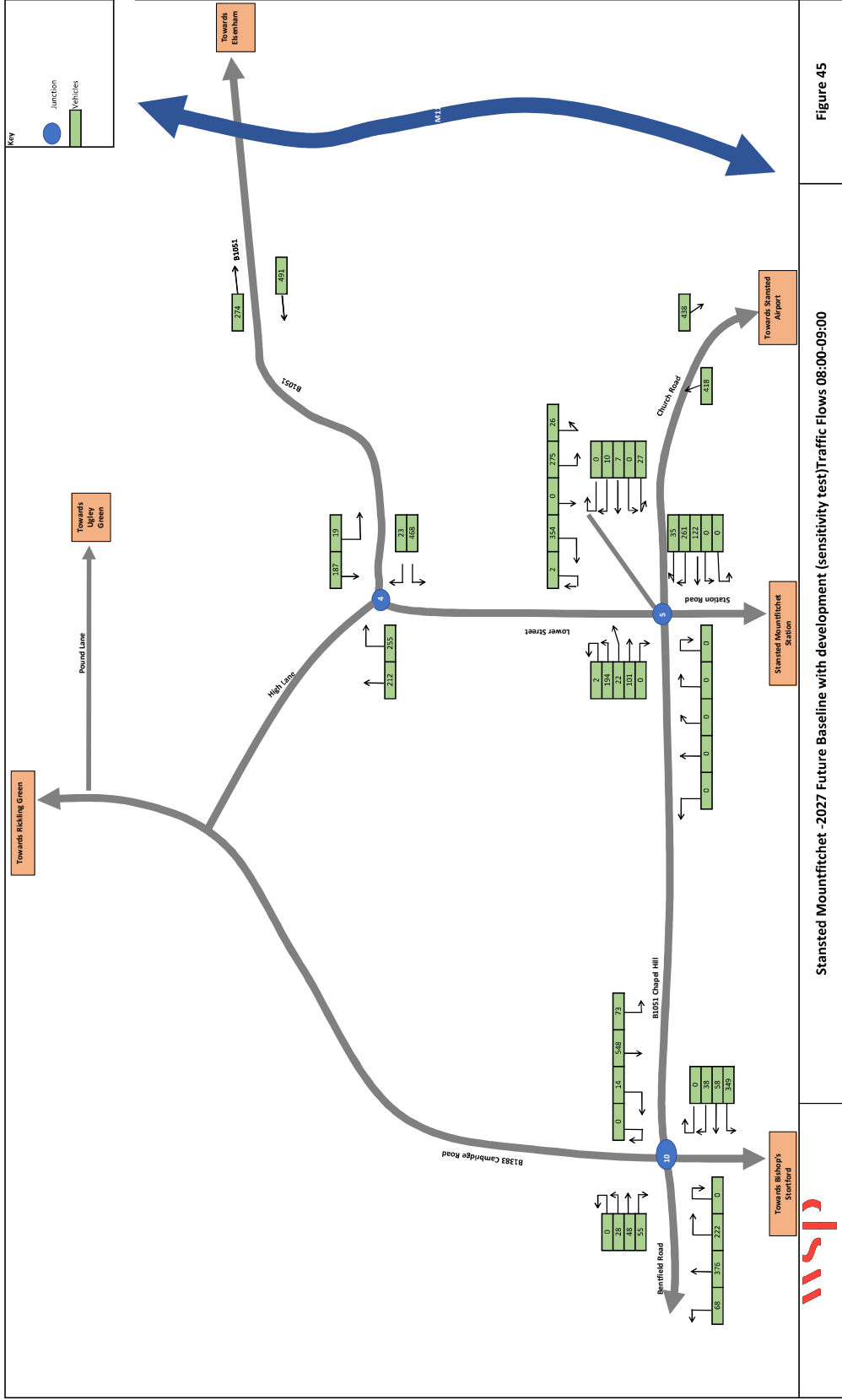












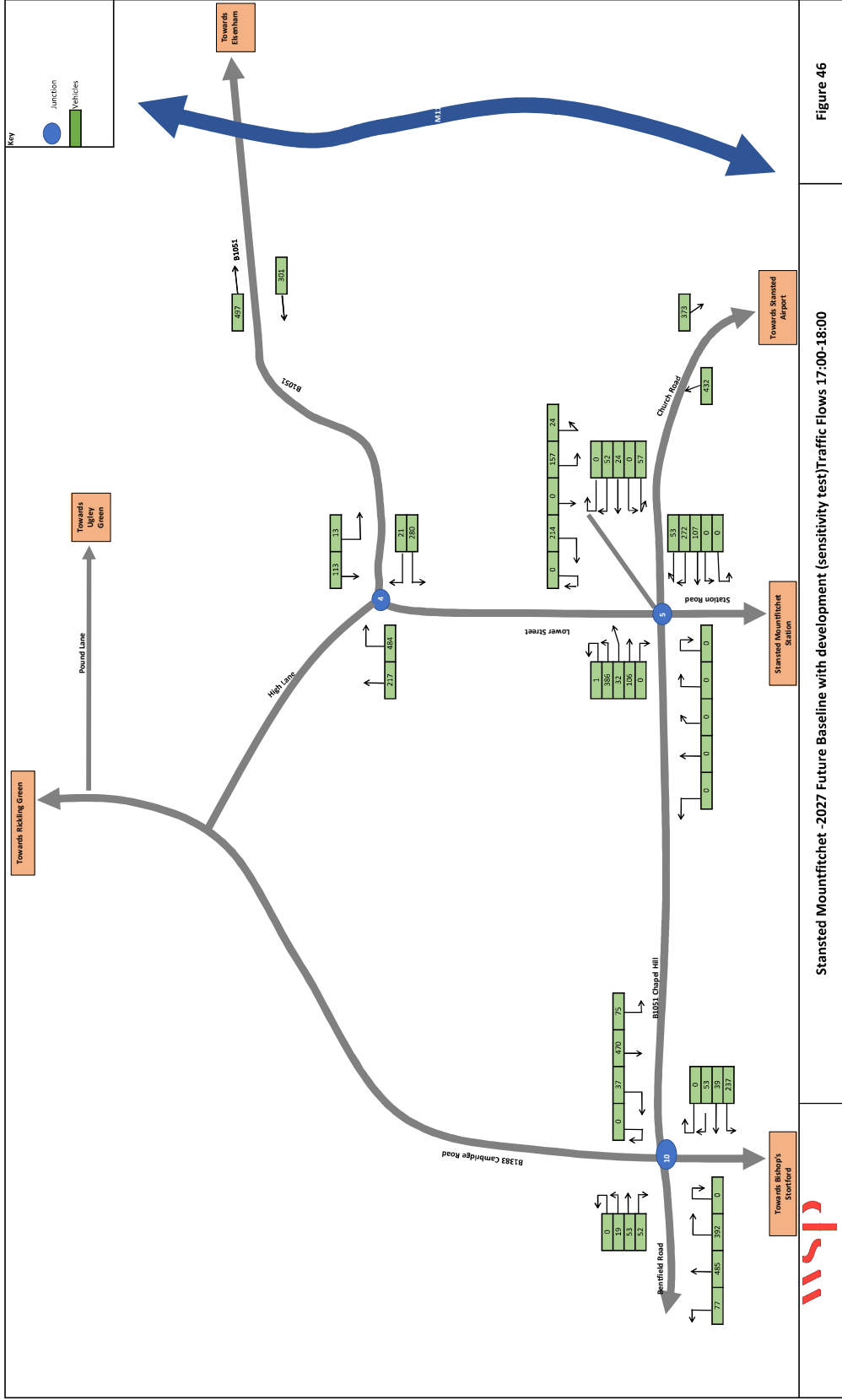
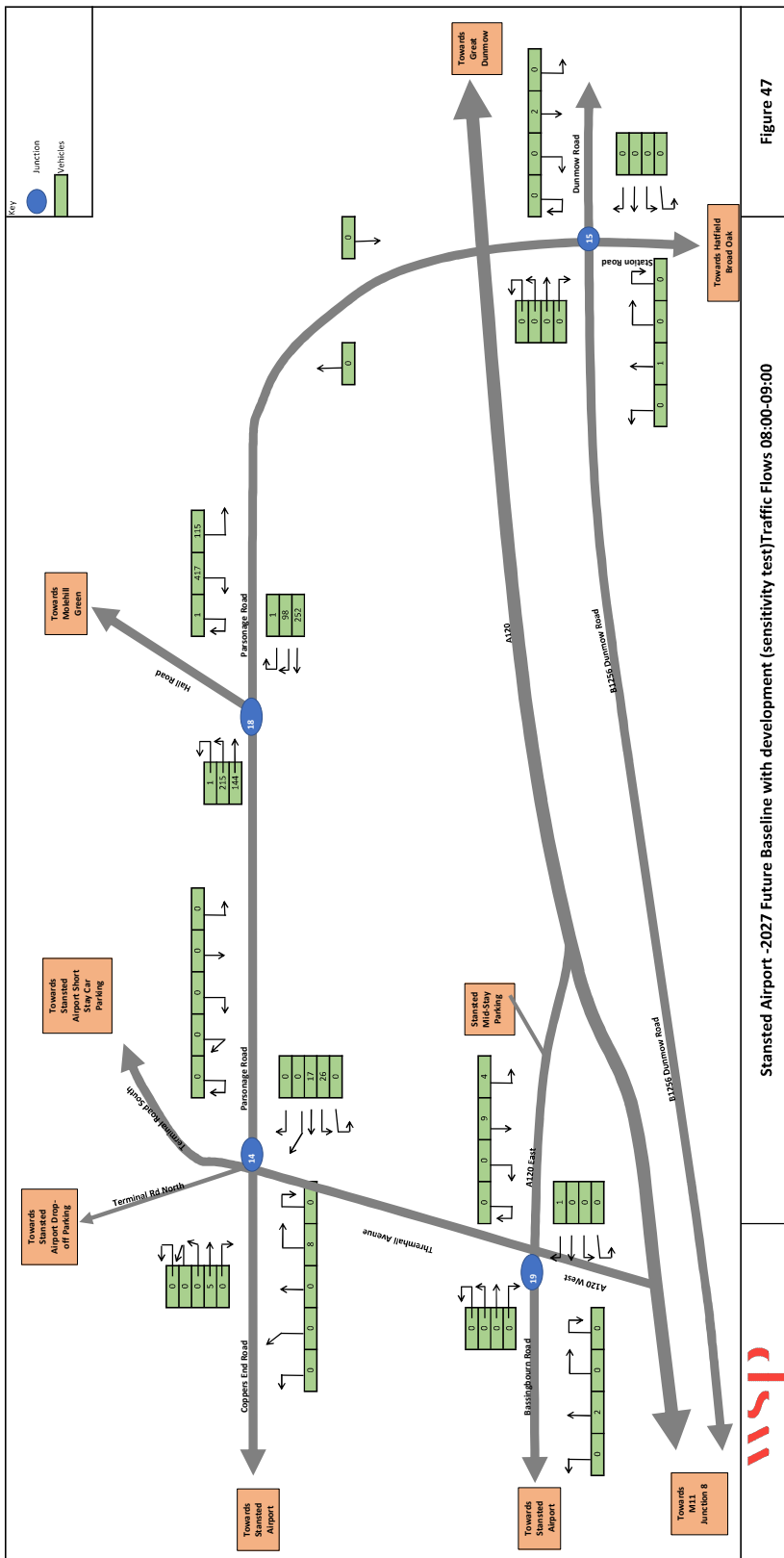
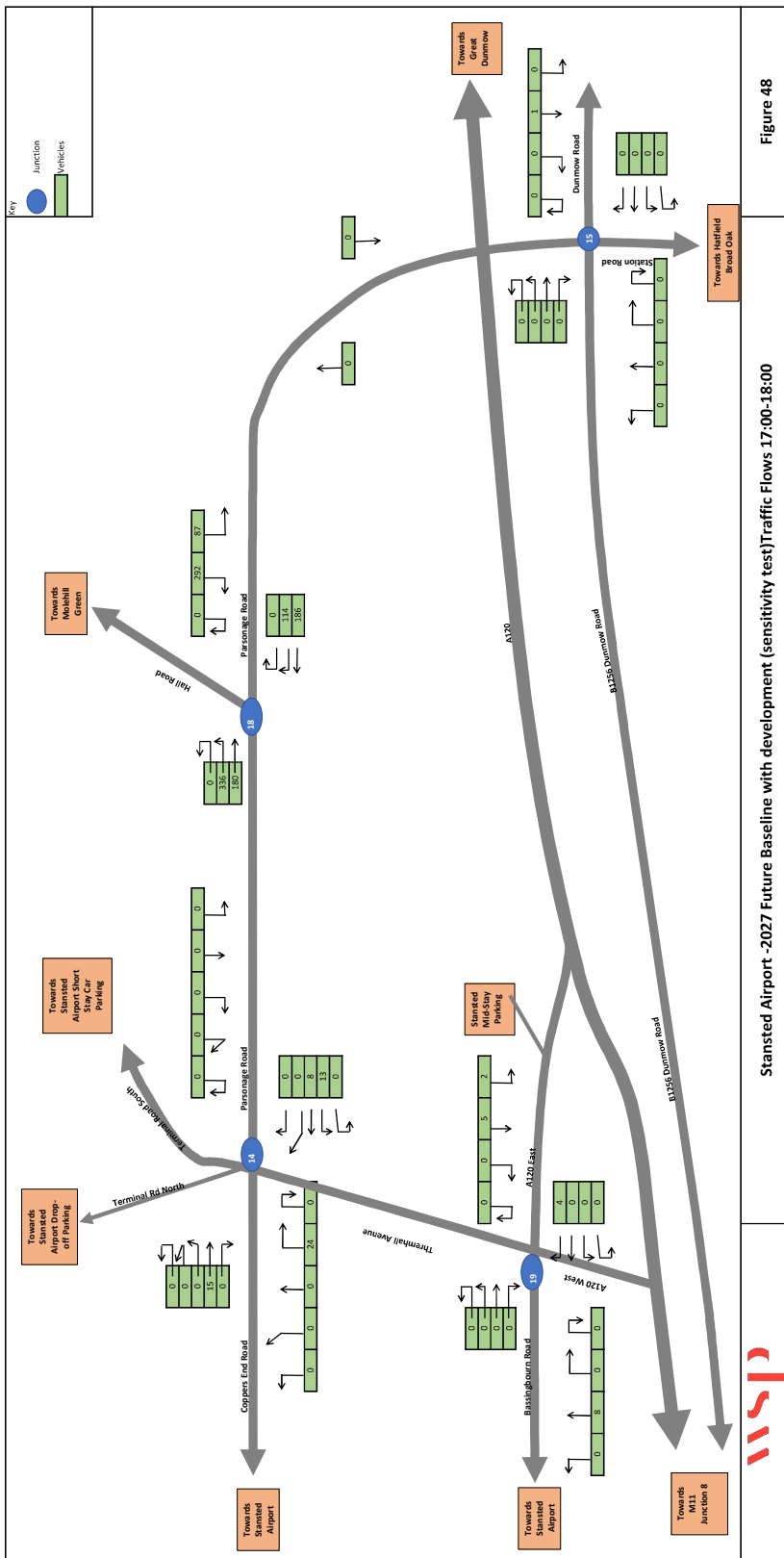


Figure 46

Stansted Mountfitchet - 2027 Future Baseline with development (sensitivity test) Traffic Flows 17:00-18:00









62-64 Hills Road
Cambridge
CB2 1LA

wsp.com

PUBLIC

Appendix Q

VEHICLE TRIP DISTRIBUTION



Trip Distribution and Assignment

Grey Tabs

Analysis 2011 Census JTW Data by Mode Analysis - distribution analysis and assignment to routes
Routing Strategic Routing Diagram

Local Assignment (Surrounding villages)

Blue Tabs

Uttlesford 005 Output Areas - distribution and assignment
Uttlesford 006 Output Areas - distribution and assignment
Uttlesford 009 Output Areas - distribution and assignment
Local Routing - local routing plan

Yellow Tabs

Summary of the 2011 Census Distribution

Red Tabs

Strategic Route assignment summary and network plans

Green Tabs

Local Route assignment summary and network plans

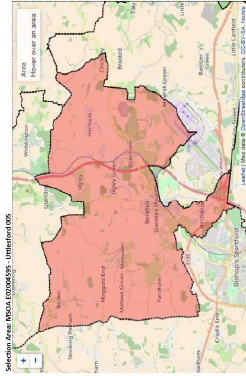
Brown Tabs

Total assignment percentages within Elsenham and Stansted Mountfitchet

Purple Tabs

Assignment of developemnt vehicles within Elsenham and Stansted Mountfitchet

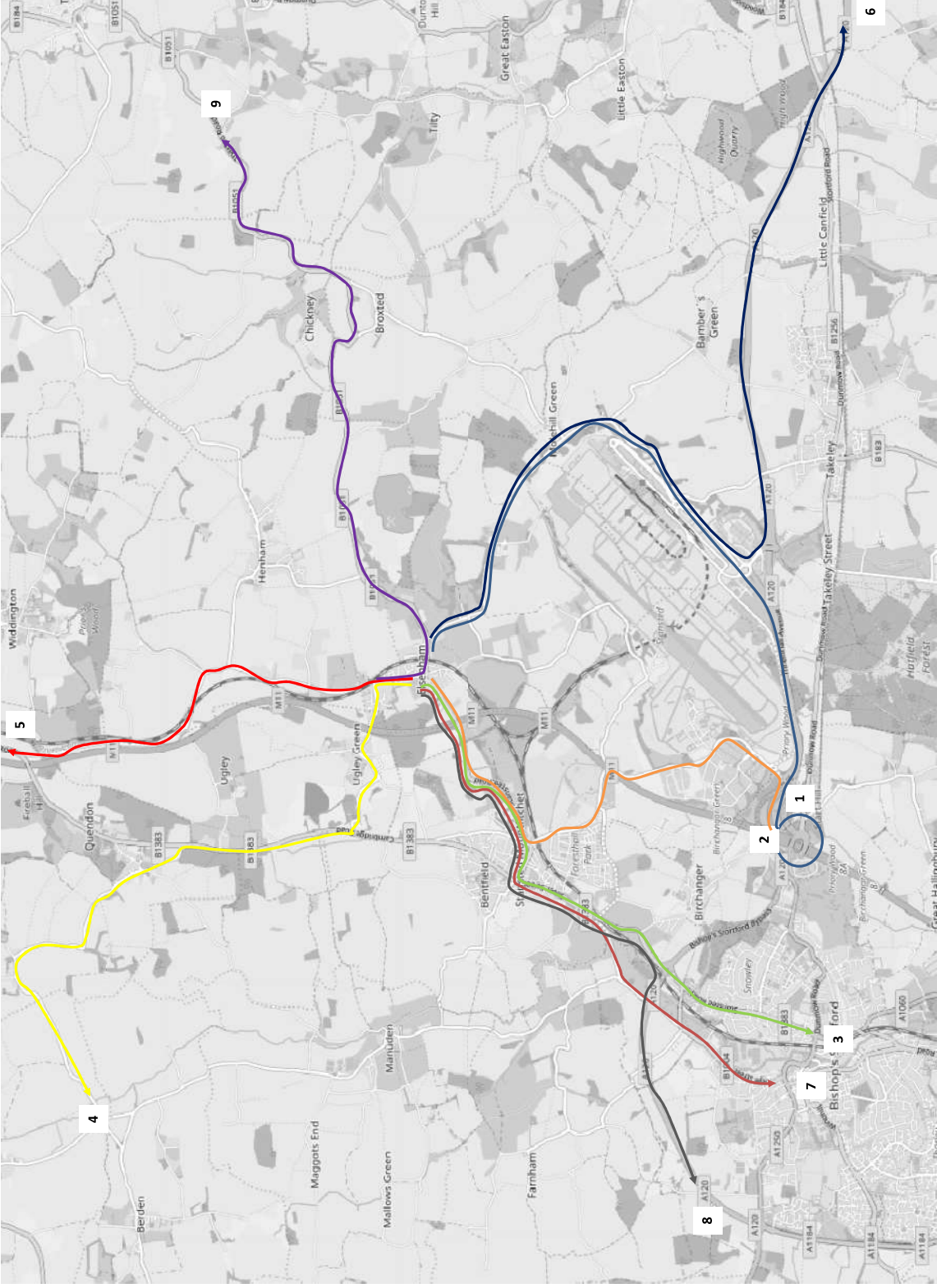
2011 Census Origin and Destination Data by Mode



Note: Location of usual residence and place of work by mode of travel to work (MCA best)
 Data source: 2011 Census, Office for National Statistics
 All users resident aged 16 and over in employment the week before the census
 Date: 12/10/2011

Area of work	Total	Work mainly by car	Underground	Light rail	Train	Bicycles	Bus, minibus or cycle	Motorcycle, scooter or moped	Driving a car or moped	Percentage of total	Other method of travel	Description	Sub-Description	Date %
E0000455 - Westminster 02	46	0	0	0	0	0	0	0	46	0	0	Bealston	Whitmore Way	0.26
E0000456 - Westminster 03	206	0	0	0	0	0	0	0	206	0	0	Bishops Cleeve	Higham Road	0.36
E0000457 - Westminster 04	135	0	0	0	0	0	0	0	135	0	0	Bishops Cleeve	Higham Road + area to the west of Bishop's Cleeve	0.36
E0000458 - Westminster 05	44	0	0	0	0	0	0	0	44	0	0	Bishops Cleeve	London Road	0.36
E0000459 - Westminster 06	44	0	0	0	0	0	0	0	44	0	0	Bishops Cleeve	London Road	0.36
E0000460 - Westminster 07	13	0	0	0	0	0	0	0	13	0	0	Bishops Cleeve	Bishop's Cleeve	0.28
E0000461 - Westminster 08	3	0	0	0	0	0	0	0	3	0	0	Bishops Cleeve	Springside Drive	0.36
E0000462 - Westminster 09	3	0	0	0	0	0	0	0	3	0	0	Bishops Cleeve	Springside Drive	0.36
E0000463 - Westminster 10	20	0	0	0	0	0	0	0	20	0	0	Bishops Cleeve	Claydon Way	0.36
E0000464 - Westminster 11	15	0	0	0	0	0	0	0	15	0	0	Bishops Cleeve	Private road adjacent to Heath	0.36
E0000465 - Westminster 12	30	0	0	0	0	0	0	0	30	0	0	Bishops Cleeve	Private road adjacent to Heath	0.36
E0000466 - Westminster 13	30	0	0	0	0	0	0	0	30	0	0	Bishops Cleeve	Private road adjacent to Heath	0.36
E0000467 - Westminster 14	37	0	0	0	0	0	0	0	37	0	0	Bishops Cleeve	Private road adjacent to Heath	0.36
E0000468 - Westminster 15	7	0	0	0	0	0	0	0	7	0	0	Bishops Cleeve	Private road adjacent to Heath	0.36
E0000469 - Westminster 16	7	0	0	0	0	0	0	0	7	0	0	Bishops Cleeve	Private road adjacent to Heath	0.36
E0000470 - Westminster 17	13	0	0	0	0	0	0	0	13	0	0	Bishops Cleeve	Private road adjacent to Heath	0.36
E0000471 - Westminster 18	13	0	0	0	0	0	0	0	13	0	0	Bishops Cleeve	Private road adjacent to Heath	0.36
E0000472 - Westminster 19	74	0	0	0	0	0	0	0	74	0	0	Bishops Cleeve	Private road adjacent to Heath	0.36
E0000473 - Westminster 20	4	0	0	0	0	0	0	0	4	0	0	Bishops Cleeve	Private road adjacent to Heath	0.26
E0000474 - Westminster 21	4	0	0	0	0	0	0	0	4	0	0	Bishops Cleeve	Private road adjacent to Heath	0.26
E0000475 - Westminster 22	4	0	0	0	0	0	0	0	4	0	0	Bishops Cleeve	Private road adjacent to Heath	0.26
E0000476 - Westminster 23	4	0	0	0	0	0	0	0	4	0	0	Bishops Cleeve	Private road adjacent to Heath	0.26
E0000477 - Westminster 24	4	0	0	0	0	0	0	0	4	0	0	Bishops Cleeve	Private road adjacent to Heath	0.26
E0000478 - Westminster 25	4	0	0	0	0	0	0	0	4	0	0	Bishops Cleeve	Private road adjacent to Heath	0.26
E0000479 - Westminster 26	4	0	0	0	0	0	0	0	4	0	0	Bishops Cleeve	Private road adjacent to Heath	0.26
E0000480 - Westminster 27	4	0	0	0	0	0	0	0	4	0	0	Bishops Cleeve	Private road adjacent to Heath	0.26
E0000481 - Westminster 28	4	0	0	0	0	0	0	0	4	0	0	Bishops Cleeve	Private road adjacent to Heath	0.26
E0000482 - Westminster 29	4	0	0	0	0	0	0	0	4	0	0	Bishops Cleeve	Private road adjacent to Heath	0.26
E0000483 - Westminster 30	4	0	0	0	0	0	0	0	4	0	0	Bishops Cleeve	Private road adjacent to Heath	0.26
E0000484 - Westminster 31	4	0	0	0	0	0	0	0	4	0	0	Bishops Cleeve	Private road adjacent to Heath	0.26
E0000485 - Westminster 32	4	0	0	0	0	0	0	0	4	0	0	Bishops Cleeve	Private road adjacent to Heath	0.26
E0000486 - Westminster 33	4	0	0	0	0	0	0	0	4	0	0	Bishops Cleeve	Private road adjacent to Heath	0.26
E0000487 - Westminster 34	4	0	0	0	0	0	0	0	4	0	0	Bishops Cleeve	Private road adjacent to Heath	0.26
E0000488 - Westminster 35	4	0	0	0	0	0	0	0	4	0	0	Bishops Cleeve	Private road adjacent to Heath	0.26
E0000489 - Westminster 36	4	0	0	0	0	0	0	0	4	0	0	Bishops Cleeve	Private road adjacent to Heath	0.26
E0000490 - Westminster 37	4	0	0	0	0	0	0	0	4	0	0	Bishops Cleeve	Private road adjacent to Heath	0.26
E0000491 - Westminster 38	4	0	0	0	0	0	0	0	4	0	0	Bishops Cleeve	Private road adjacent to Heath	0.26
E0000492 - Westminster 39	4	0	0	0	0	0	0	0	4	0	0	Bishops Cleeve	Private road adjacent to Heath	0.26
E0000493 - Westminster 40	4	0	0	0	0	0	0	0	4	0	0	Bishops Cleeve	Private road adjacent to Heath	0.26
E0000494 - Westminster 41	4	0	0	0	0	0	0	0	4	0	0	Bishops Cleeve	Private road adjacent to Heath	0.26
E0000495 - Westminster 42	4	0	0	0	0	0	0	0	4	0	0	Bishops Cleeve	Private road adjacent to Heath	0.26
E0000496 - Westminster 43	4	0	0	0	0	0	0	0	4	0	0	Bishops Cleeve	Private road adjacent to Heath	0.26
E0000497 - Westminster 44	4	0	0	0	0	0	0	0	4	0	0	Bishops Cleeve	Private road adjacent to Heath	0.26
E0000498 - Westminster 45	4	0	0	0	0	0	0	0	4	0	0	Bishops Cleeve	Private road adjacent to Heath	0.26
E0000499 - Westminster 46	4	0	0	0	0	0	0	0	4	0	0	Bishops Cleeve	Private road adjacent to Heath	0.26
E0000500 - Westminster 47	4	0	0	0	0	0	0	0	4	0	0	Bishops Cleeve	Private road adjacent to Heath	0.26
E0000501 - Westminster 48	4	0	0	0	0	0	0	0	4	0	0	Bishops Cleeve	Private road adjacent to Heath	0.26
E0000502 - Westminster 49	4	0	0	0	0	0	0	0	4	0	0	Bishops Cleeve	Private road adjacent to Heath	0.26
E0000503 - Westminster 50	4	0	0	0	0	0	0	0	4	0	0	Bishops Cleeve	Private road adjacent to Heath	0.26
E0000504 - Westminster 51	4	0	0	0	0	0	0	0	4	0	0	Bishops Cleeve	Private road adjacent to Heath	0.26
E0000505 - Westminster 52	4	0	0	0	0	0	0	0	4	0	0	Bishops Cleeve	Private road adjacent to Heath	0.26
E0000506 - Westminster 53	4	0	0	0	0	0	0	0	4	0	0	Bishops Cleeve	Private road adjacent to Heath	0.26
E0000507 - Westminster 54	4	0	0	0	0	0	0	0	4	0	0	Bishops Cleeve	Private road adjacent to Heath	0.26
E0000508 - Westminster 55	4	0	0	0	0	0	0	0	4	0	0	Bishops Cleeve	Private road adjacent to Heath	0.26
E0000509 - Westminster 56	4	0	0	0	0	0	0	0	4	0	0	Bishops Cleeve	Private road adjacent to Heath	0.26
E0000510 - Westminster 57	4	0	0	0	0	0	0	0	4	0	0	Bishops Cleeve	Private road adjacent to Heath	0.26
E0000511 - Westminster 58	4	0	0	0	0	0	0	0	4	0	0	Bishops Cleeve	Private road adjacent to Heath	0.26
E0000512 - Westminster 59	4	0	0	0	0	0	0	0	4	0	0	Bishops Cleeve	Private road adjacent to Heath	0.26
E0000513 - Westminster 60	4	0	0	0	0	0	0	0	4	0	0	Bishops Cleeve	Private road adjacent to Heath	0.26
E0000514 - Westminster 61	4	0	0	0	0	0	0	0	4	0	0	Bishops Cleeve	Private road adjacent to Heath	0.26
E0000515 - Westminster 62	4	0	0	0	0	0	0	0	4	0	0	Bishops Cleeve	Private road adjacent to Heath	0.26
E0000516 - Westminster 63	4	0	0	0	0	0	0	0	4	0	0	Bishops Cleeve	Private road adjacent to Heath	0.26
E0000517 - Westminster 64	4	0	0	0	0	0	0	0	4	0	0	Bishops Cleeve	Private road adjacent to Heath	0.26
E0000518 - Westminster 65	4	0	0	0	0	0	0	0	4	0	0	Bishops Cleeve	Private road adjacent to Heath	0.26
E0000519 - Westminster 66	4	0	0	0	0	0	0	0	4	0	0	Bishops Cleeve	Private road adjacent to Heath	0.26
E0000520 - Westminster 67	4	0	0	0	0	0	0	0	4	0	0	Bishops Cleeve	Private road adjacent to Heath	0.26
E0000521 - Westminster 68	4	0	0	0	0	0	0	0	4	0	0	Bishops Cleeve	Private road adjacent to Heath	0.26
E0000522 - Westminster 69	4	0	0	0	0	0	0	0	4	0	0	Bishops Cleeve	Private road adjacent to Heath	0.26
E0000523 - Westminster 70	4	0	0	0	0	0	0	0	4	0	0	Bishops Cleeve	Private road adjacent to Heath	0.26

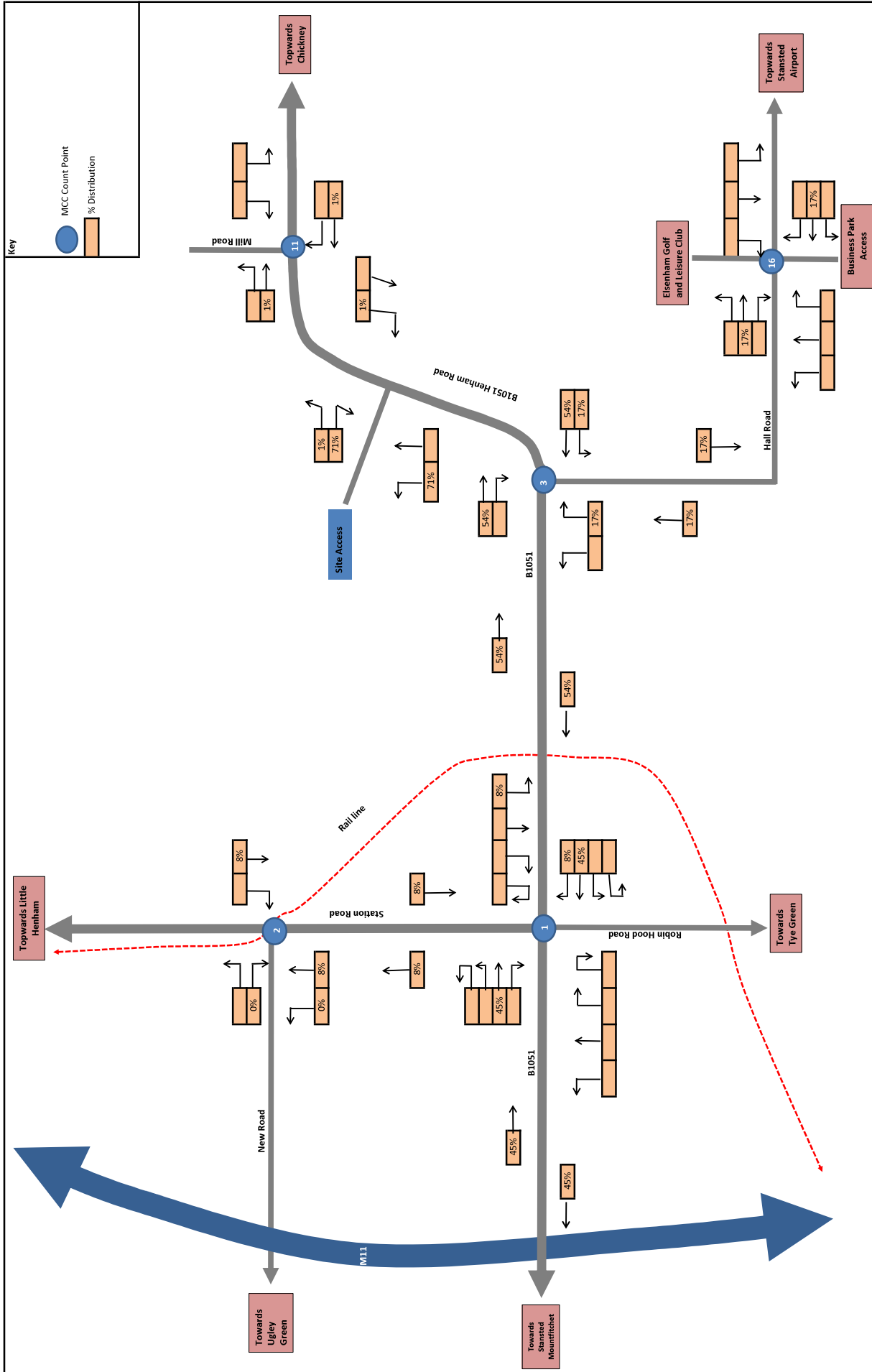
Figure 1: Strategic Route Assignment



- 1: Hall Road - M11
- 2: Bury Lodge Lane-M11
- 3: Stansted Road
- 4: New Road
- 5: N Hall Road
- 6: Hall Road - Thremhall Ave - A120 East
- 7: Stansted Road - Hazelend Road
- 8: Stansted Road - A120 West
- 9: Henham Road

Strategic Assignment

Description	Dist (%)	Route Assignment									Route Distribution								
		Route 1	Route 2	Route 3	Route 4	Route 5	Route 6	Route 7	Route 8	Route 9	Route 1	Route 2	Route 3	Route 4	Route 5	Route 6	Route 7	Route 8	Route 9
Basilston	0.2%	50%	50%								0.11%	0.11%							
Bishops Stortford	8.5%			50%				50%					4.23%				4.23%		
Bishops Stortford	6.4%			50%				50%					3.19%				3.19%		
Bishops Stortford	3.8%								100%									3.77%	
Bishops Stortford	3.6%			50%				50%					1.78%				1.78%		
Bishops Stortford	1.4%			50%				50%					0.70%				0.70%		
Boreham	0.2%							100%							0.18%				
Braintree																			
Braintree	0.9%							100%							0.93%				
Broxbourne																			
Broxbourne	1.2%	33%	33%						33%		0.41%	0.41%					0.41%		
Buntingford	0.5%				50%				50%				0.27%					0.27%	
Cambridge																			
Cambridge	2.1%	40%	40%			20%				0.83%	0.83%			0.42%					
Cambridge																			
Chelmsford	1.1%							100%							1.08%				
Cheshunt	0.4%	33%	33%						33%		0.12%	0.12%						0.12%	
Chesterford	2.0%	40%	40%			20%				0.80%	0.80%			0.40%					
Chingford	0.2%	50%	50%							0.09%	0.09%								
Chipping Ongar	0.2%	50%	50%							0.11%	0.11%								
Clacton-on-Sea	0.2%							100%							0.22%				
Colchester	0.2%							100%							0.22%				
Duxford	0.9%	40%	40%			20%				0.36%	0.36%			0.18%					
Enfield	0.5%	50%	50%							0.27%	0.27%								
Enfield Lock																			
Epping																			
Epping	1.0%	50%	50%							0.50%	0.50%								
Great Dunmow	1.8%							100%							1.76%				
Hainault	0.2%	50%	50%							0.09%	0.09%								
Harlow																			
Harlow																			
Harlow	10.2%	45%	45%						10%	4.59%	4.59%						1.02%		
Harlow																			
Harlow																			
Harlow																			
Harlow (centre)																			
Hastingwood	1.0%	50%	50%							0.50%	0.50%								
Hatfield	0.2%								100%								0.22%		
Haverhill	0.3%								100%									0.32%	
Heathrow Airport	0.2%	50%	50%							0.09%	0.09%								
Hertford	1.2%								100%								1.18%		
Leyton	0.2%	50%	50%							0.09%	0.09%								
Little Dunmow	0.9%							100%							0.90%				
London																			
London	3.0%	50%	50%							1.49%	1.49%								
London																			
London																			
London																			
Loughton	0.5%	50%	50%							0.27%	0.27%								
Loughton																			
Lower Nazeing	0.4%	33%	33%						33%	0.14%	0.14%						0.14%		
Luton	0.8%								100%									0.79%	
Luton	0.3%	15%	15%		20%	50%				0.04%	0.04%		0.06%	0.14%					
Melbourn	0.4%	45%	45%			10%				0.16%	0.16%			0.04%					
Milton	1.1%								100%									1.11%	
Much Hadham	2.5%								100%										
Newport	0.3%								100%						2.55%				
River Lee Country Park	0.2%	50%	50%							0.09%	0.09%							0.32%	
Romford	0.2%	50%	50%							0.09%	0.09%								
Roydon	0.3%							100%							0.29%				
Saffron Walden	3.8%							100%							3.84%				
Sawbridgeworth	1.4%								100%									1.44%	
See Uttlesford 005 Output Areas	11.1%																		
See Uttlesford 006 Output Areas	15.1%																		
See Uttlesford 009 Output Areas	1.8%																		
St Albans	0.2%	50%	50%							0.11%	0.11%								
Standon	0.3%								100%									0.25%	
Stansted Abbots	0.3%								100%									0.29%	
Stevenage	0.9%								100%									0.93%	
Stevenage																			
Stevenage																			
Thaxted	0.8%								100%									0.75%	
Waltham Abbey	0.3%	50%	50%							0.16%	0.16%								
Waltham Cross	0.2%	50%	50%							0.11%	0.11%								
Ware	1.4%								100%									1.40%	
Ware																			
Warley	0.2%	50%	50%							0.11%	0.11%								
Welwyn Garden City	0.4%								100%									0.36%	
Welwyn Garden City																			
Wethersfield	0.2%								100%									0.18%	
Witham	0.2%							100%							0.22%				
		100.0%									11.63%	11.63%	9.90%	0.33%	7.85%	5.49%	9.90%	14.01%	1.26%



Elsenham Strategic % Assignment

Figure 2

Key
 ● MCCC Count Point
 ▭ % Distribution

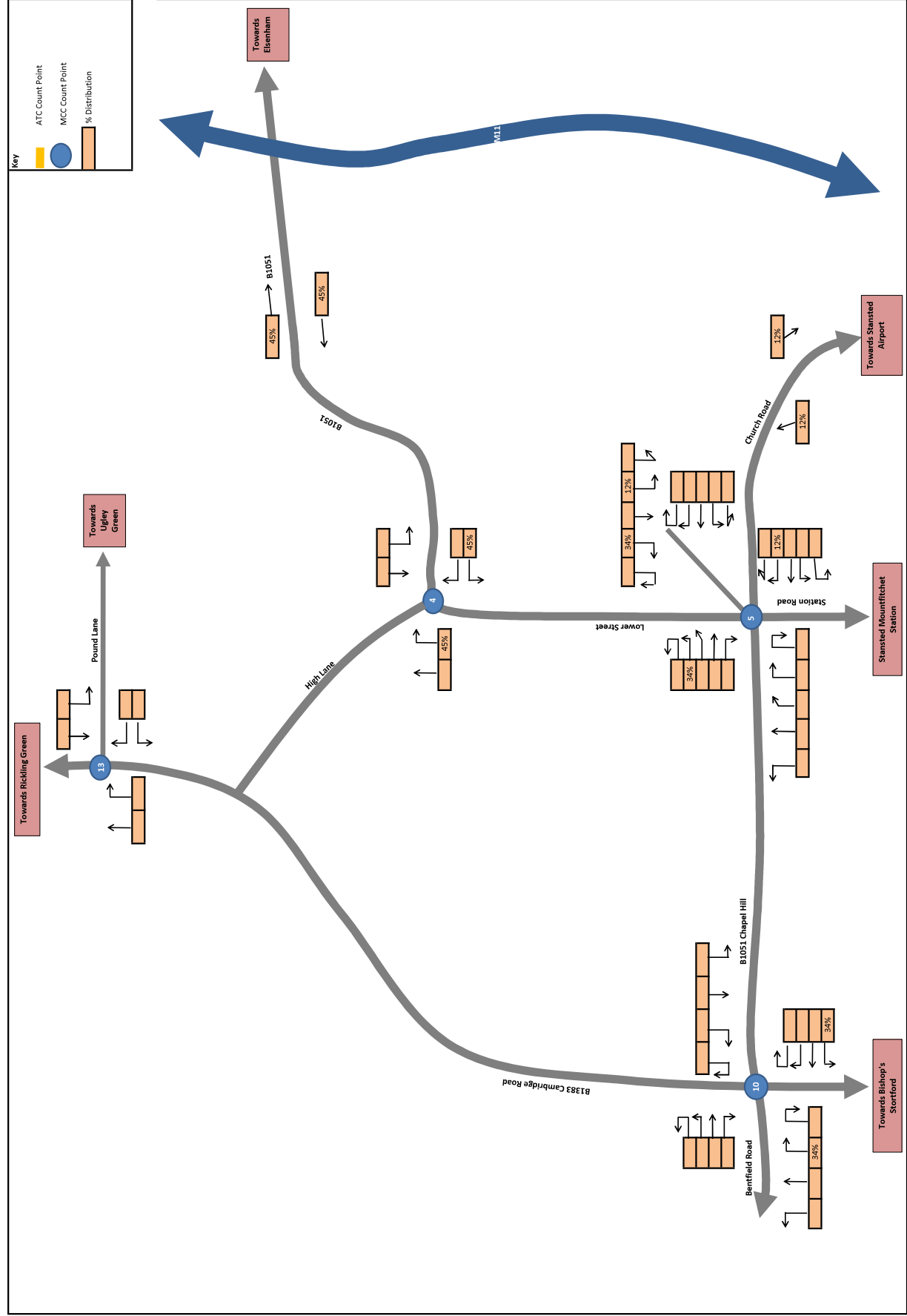


Figure 3

Stansted Mountfitchet Strategic % Assignment



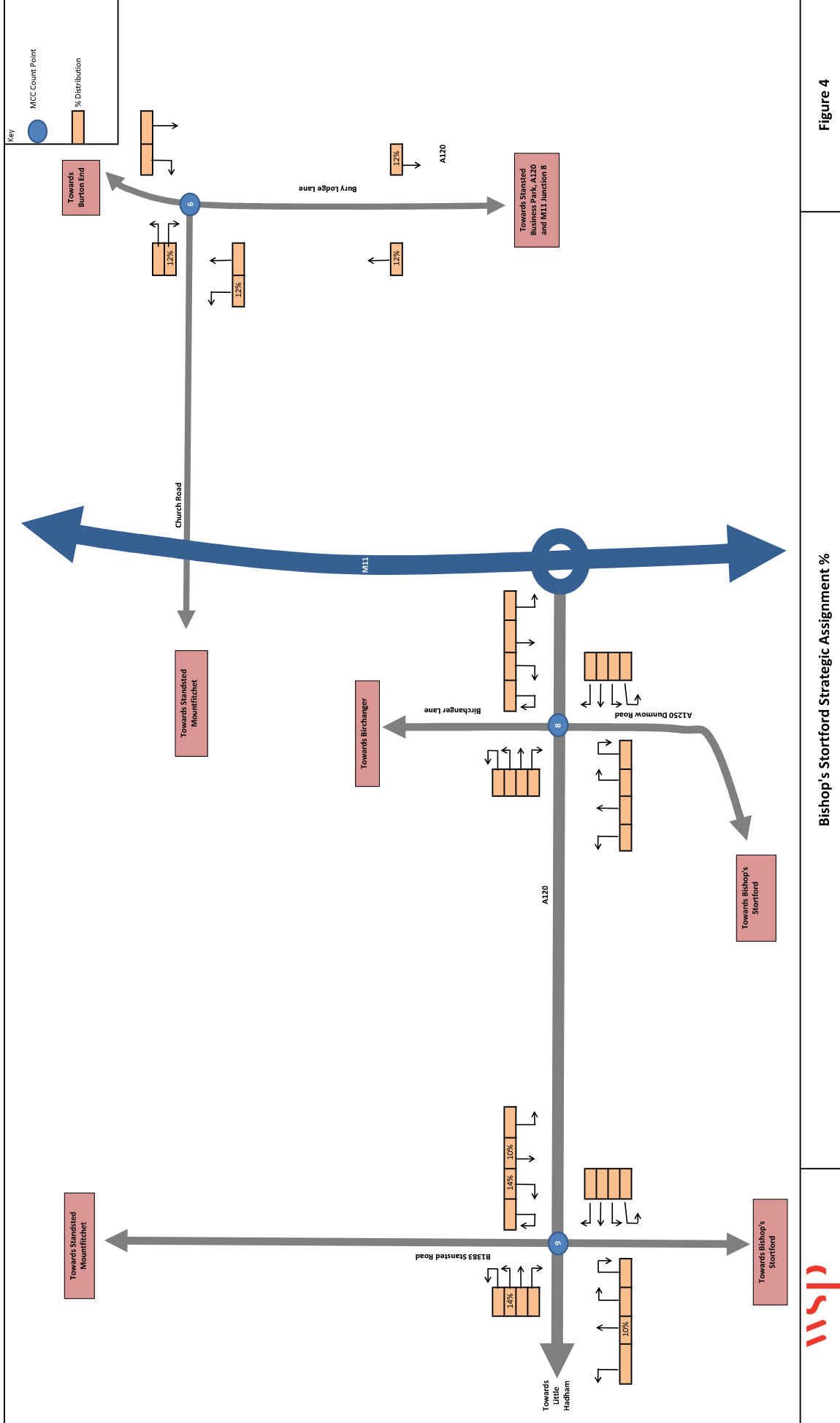
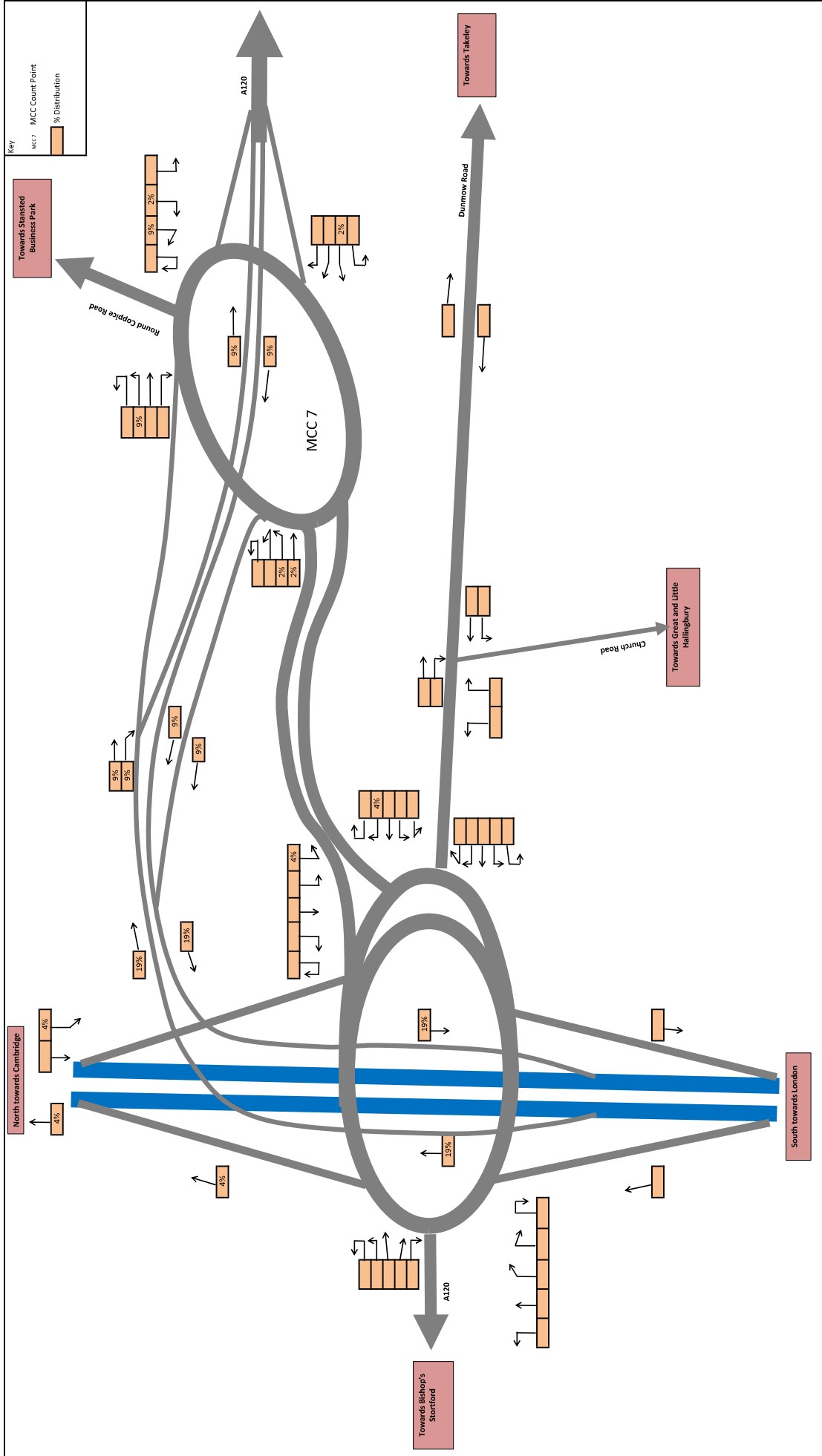
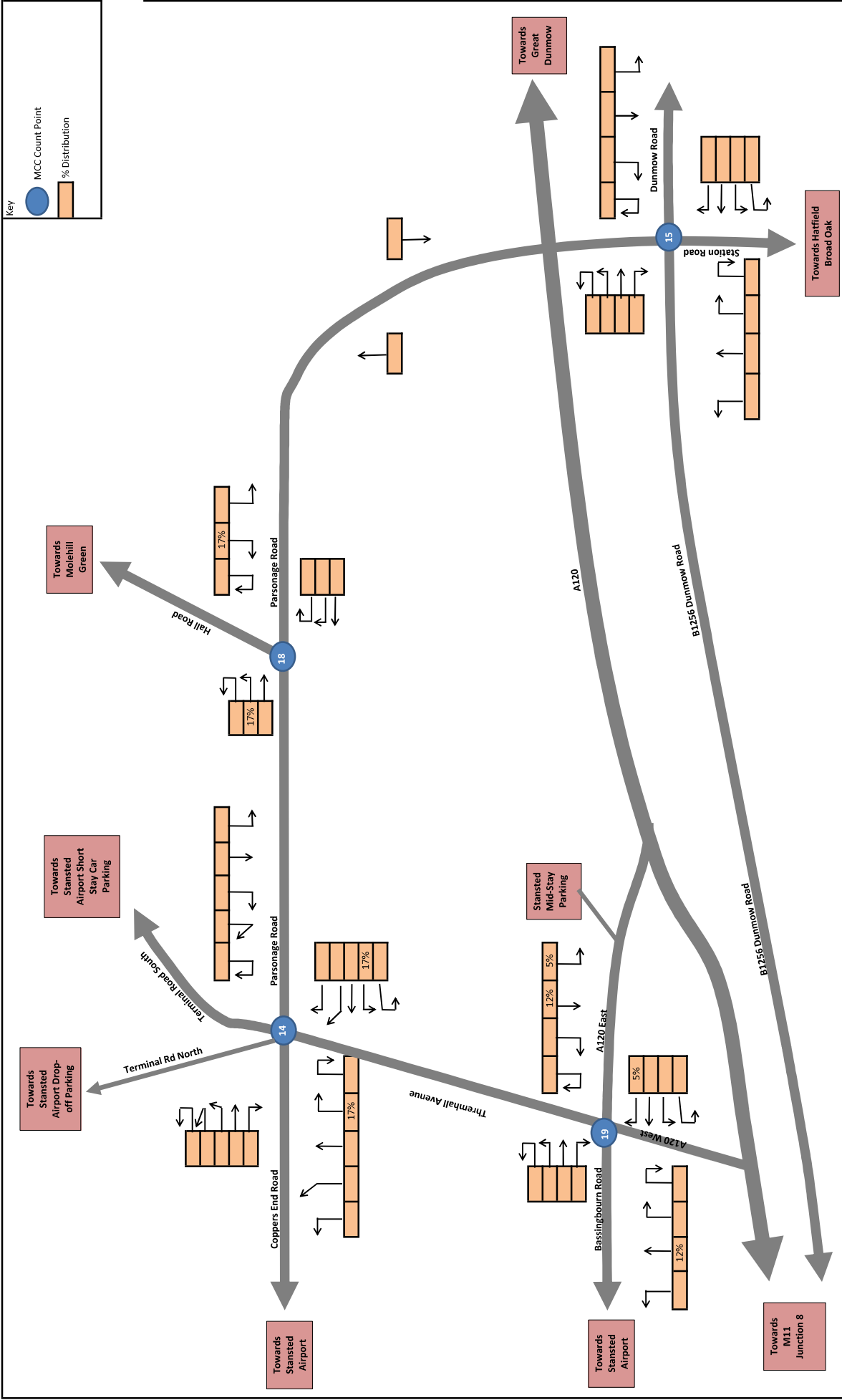


Figure 4

Bishop's Stortford Strategic Assignment %







Key
 ● MCC Count Point
 ▬ % Distribution



Stansted Airport Strategic Assignment %

Figure 6