

EU Type Examination Certificate Number: **UK/ 0120/ SGS0252**

## Secure Meters (UK) Ltd

Secure House  
Lulworth Close  
Chandlers Ford  
Eastleigh  
SO53 3TL

Instrument Identification

**EG4v11 G01153-Z01**

**EG4v15 G04153-Z01**

Instrument Traceable Number

**UK/ 0120/ SGS0252**

## EU Directive 2014/32/EU

on Measuring Instruments Module B

It is certified that the manufacturer's technical design and specimen for the above instrument has been examined and, based on the evidence submitted, it is considered that the instrument conforms to the requirements of MI-002 of EU Directive 2014/32/EU.

This certificate is to be used in conjunction with a certificate covering the product verification as required in Module D or Module F

This certificate is valid until 24<sup>th</sup> July 2026

Issue 3

Certification is based on report number(s) **UK/0120/SGS0252Ra dated 25<sup>th</sup> July 2016**  
**UK/0120/SGS0252Rb dated 3<sup>rd</sup> August 2017**

**CE**  
**0120**

Notified Body Number 0120

Authorised Signature



Notified Body

SGS United Kingdom Ltd, 202B Worle Parkway, Weston-super-Mare, BS22 6WA UK  
t +44 (0)1934 522917 f +44 (0)1934 522137 [www.sgs.com](http://www.sgs.com)

Contact Address

SGS United Kingdom Ltd, Unit 10, South Industrial Estate, Bowburn, Durham, DH6 5AD UK  
t +44 (0)191 377 2000 f +44 (0)191 377 2020 [www.sgs.com](http://www.sgs.com)

EU Type Examination Cert.



## Approval Annex for EU Type Examination Cert. No. UK/ 0120/ SGS0252

<b>Manufacturer</b> : Secure Meters (UK) Ltd	
<b>Type of Meter(s)</b> : G4 Diaphragm Meter with Electronic Index	
<b>Description of Meter</b> : Diaphragm gas meter with electronic index, internal cut-off valve, ZigBee radio module and offering SMETS1 functionality	
<b>Accuracy Class (es)</b> : 1.5	<b>Model</b> : <b>EG4v11</b> <b>EG4v15</b> <b>Metering Firmware</b> : B3--01 B3--02 <b>Application Program</b> : Q401G10 Q401G12
<b>Model</b> : <b>EG4v11</b> <b>EG4v15</b> <b>Bill of Materials No</b> : G01153-Z01 G04153-Z01	<b>Boss Type</b> : 1 inch boss to BS 746
<b>Meter Model No</b> : EG4v11 G01153-Z01 : EG4v15 G04153-Z01	<b>Sealing Type</b> : Plastic Laser Etched seal <b>Location</b> : Beneath optical port
<b>Integrity of Meter</b> : Inaccessible without breaking seals	<b>Temperature Range</b> : -10°C to +40°C
<b>Range of Gases</b> : Second Family	<b>Maximum Operating Pressure</b> : 0.5bar
<b>Flow Range</b> : Qmax 6.0m <sup>3</sup> /h : Qmin 0.040m <sup>3</sup> /h	<b>Orientation</b> : Connection ports vertical
<b>Model</b> : <b>EG4v11</b> <b>EG4v15</b> <b>Cyclic Volume</b> : 1.2dm <sup>3</sup> 2dm <sup>3</sup>	



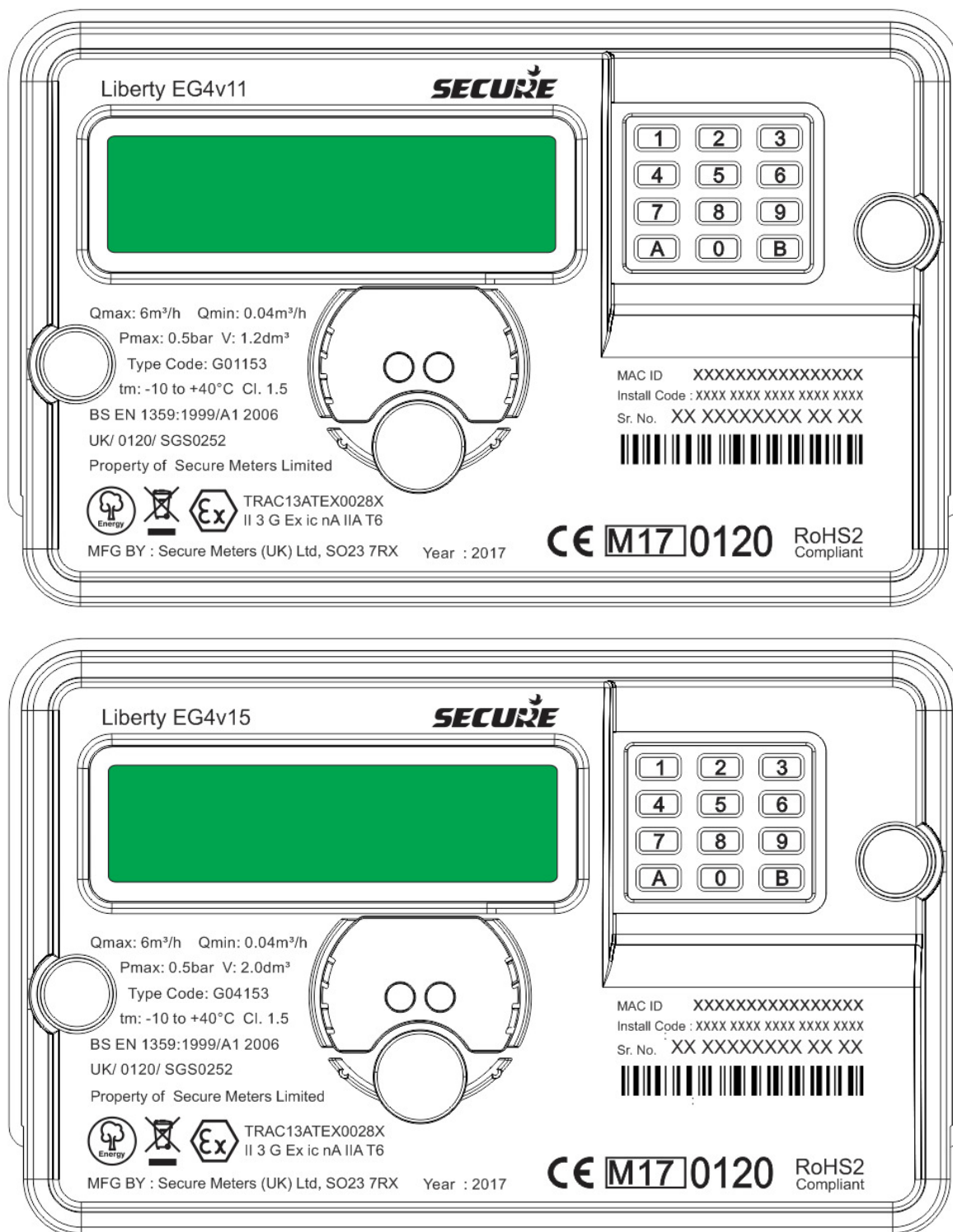
## Photograph of Meter (External View)

EG4v11 G01153-Z01 meter showing laser etched meter marking and sealing arrangement. The seal below the optical port is the metrological seal. The two other seals cover fasteners that enable removal of the index / battery cover, which is required for battery replacement. Flow direction is indicated by an arrow embossed on the top of the meter case.





## Photographs/Drawings of EG4v11 G01153-Z01 & EG4v15 G04153-Z01 Electronic Index



Drawings showing Gas meter markings, please note a 2D barcode may be used in place of the 1D barcode shown.

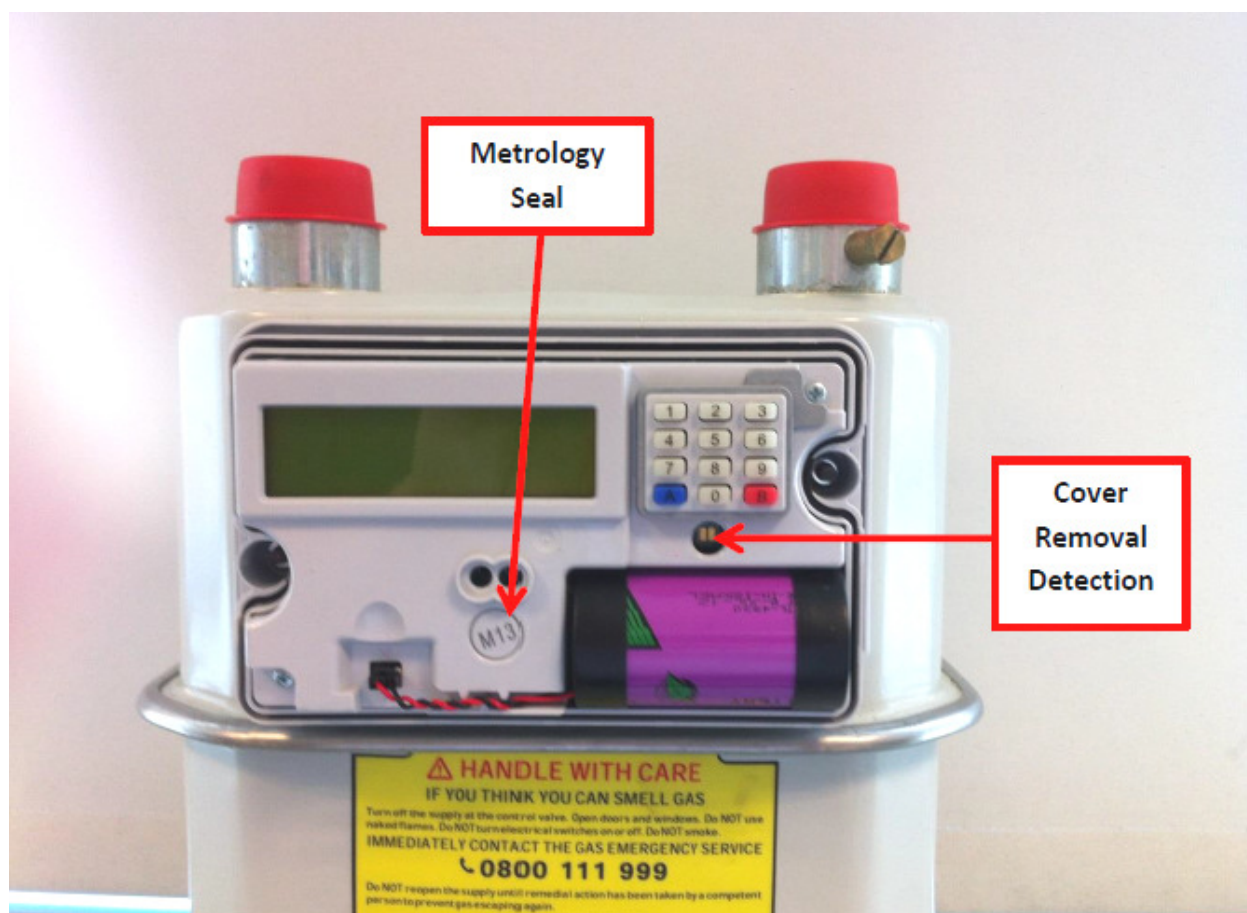


**Photographs of the Two Approved Variants**

The differences between the two variants are most evident when viewed from the side. The 2dm<sup>3</sup> EG4v15 G04153-Z01, approved in this issue of the certificate, has a deeper electronic index to accommodate an integration plate and idler gear. The 1.2dm<sup>3</sup> EG4v11 G01153-Z01 meter, approved on the initial certificate, is fitted with black plastic feet.



## Photograph of Index without Battery Cover Fitted



Removing the front cover allows access to battery the inner cover's Metrology seal prevents its removal without destroying the seal.



**Photograph of Metrological Seal**



Please note that the actual seal marking will be M followed by the year of its affixing





UK/ 0120/ SGS0252  
28<sup>th</sup> May 2019  
Issue 3

## Secure Meters EG4v\*\*G0\*15\*-Z01 \*\*\*\*\* Designations

**Meter**  
EG4v

### Meter Type

11 G01153-Z01  
15 G04153-Z01

### Index/Meter Assembly

G0 Gas meter with mechanical meter and electronic index

### Base Mechanical Meter

1 G4, 1.2L Measuring Element  
2 G4, 2.2L Measuring Element (not currently approved)  
3 G4, 2.4L Measuring Element (not currently approved)  
4 G4, 2.0L Measuring Element

### Accuracy Class

15 Class 1.5

### Flow Capacity

1 2.5 m<sup>3</sup>/h (not currently approved)  
2 4.0 m<sup>3</sup>/h (not currently approved)  
3 6.0 m<sup>3</sup>/h

### Model BOM

Z01 Zigbee SEP communication

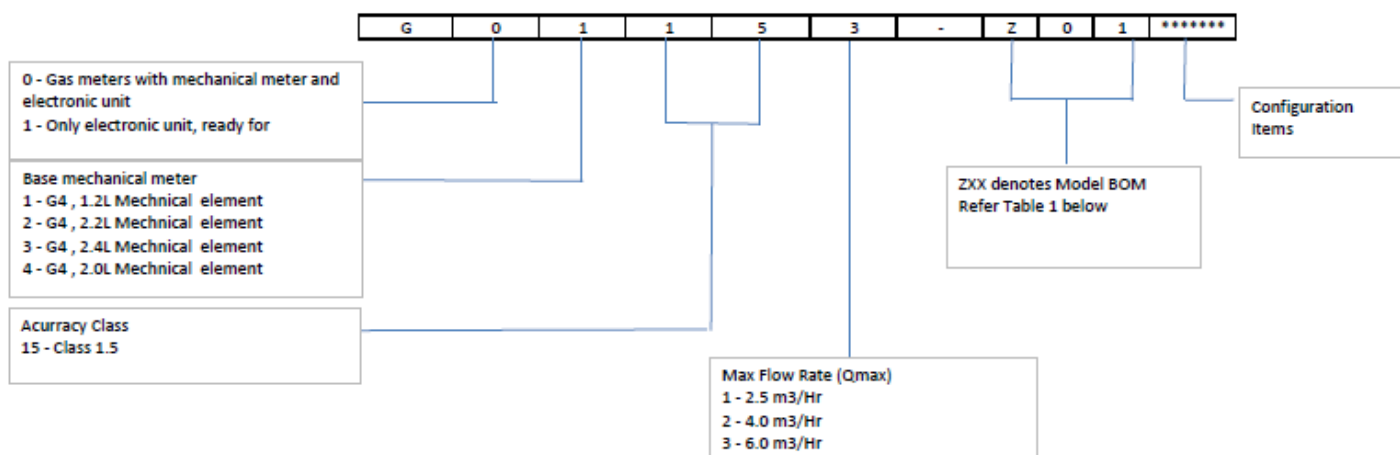
\*\*\*\*\*

Configuration Items (None approved)



## Codification for Liberty EG4v\*\* Gas Meter

### Gas Meter Codification Sheet



#### Default Features:

Liberty EG4v 11 / Liberty EG4v 15	
Processor	G12
Measurement Method	Optical pickup of Gray Coded Disc
SOV	Stepper Motor / DC Motor Valve
EEPROM size	64KB
Flash size	1MB
Keypad	Rubber
Buzzer	Piezo buzzer
Main Battery	Non Rechargeable 19AH D cell
Main cover opening detection	Yes
Backlight	Green
Magnet sensing	Yes
Local optical communication port	IEC1107
Data rate on optical port	1200
CE Compliance	RED, MID, ATEX

Table 1 ( for Model BOM)

Feature	Options	Z01
RF communication	Zigbee SEP	configurable





UK/ 0120/ SGS0252  
28<sup>th</sup> May 2019  
Issue 3

#### Document Revision History

Issue	Date	Comments
1	25/07/2016	Initial Issue
2	03/08/2017	Alternative BK-G4 V2 2 dm <sup>3</sup> diaphragm measuring unit
3	28/05/2019	Change of manufacturers address