

EU Type Examination Certificate Number: **UK/ 0120/ SGS0245**

Landis + Gyr Ltd

Orion Business Park
Bird Hall Lane
Stockport
SK3 0RT

Instrument Identification:

G470 671 E061122 61

G470 672 E061122 61

**Integrated E6 gas meter with internal cut-off valve, security chip and
ZigBee radio module and offering SMETS1 or SMETS2 functionality**

Instrument Traceable Number

UK/ 0120/ SGS0245

Directive 2014/32/EU

on Measuring Instruments Annex II Module B

It is certified that the manufacturer's technical design and specimen for the above instrument has been examined and, based on the evidence submitted, it is considered that the instrument conforms to the requirements of MI-002 of Directive 2014/32/EU.

This certificate is to be used in conjunction with a certificate covering the product verification as required in Annex II Module D or Annex II Module F

This certificate is valid until 2016 24th July 2026

Issue 3

Certification is based on report number(s) **UK/0120/SGS0245Rb** dated 21st July 2016

Notified Body Number 0120

CE
0120

Authorised Signature



Notified Body

SGS United Kingdom Ltd, 202B Worle Parkway, Weston-super-Mare, BS22 6WA UK

t +44 (0)1934 522917 f +44 (0)1934 522137 www.sgs.com

Contact Address

SGS United Kingdom Ltd, Unit 10, South Industrial Estate, Bowburn, Durham, DH6 5AD UK

t +44 (0)191 377 2000 f +44 (0)191 377 2020 www.sgs.com

EU Type Examination Cert.

Page 1 of 4

MID-B06E Rev 2



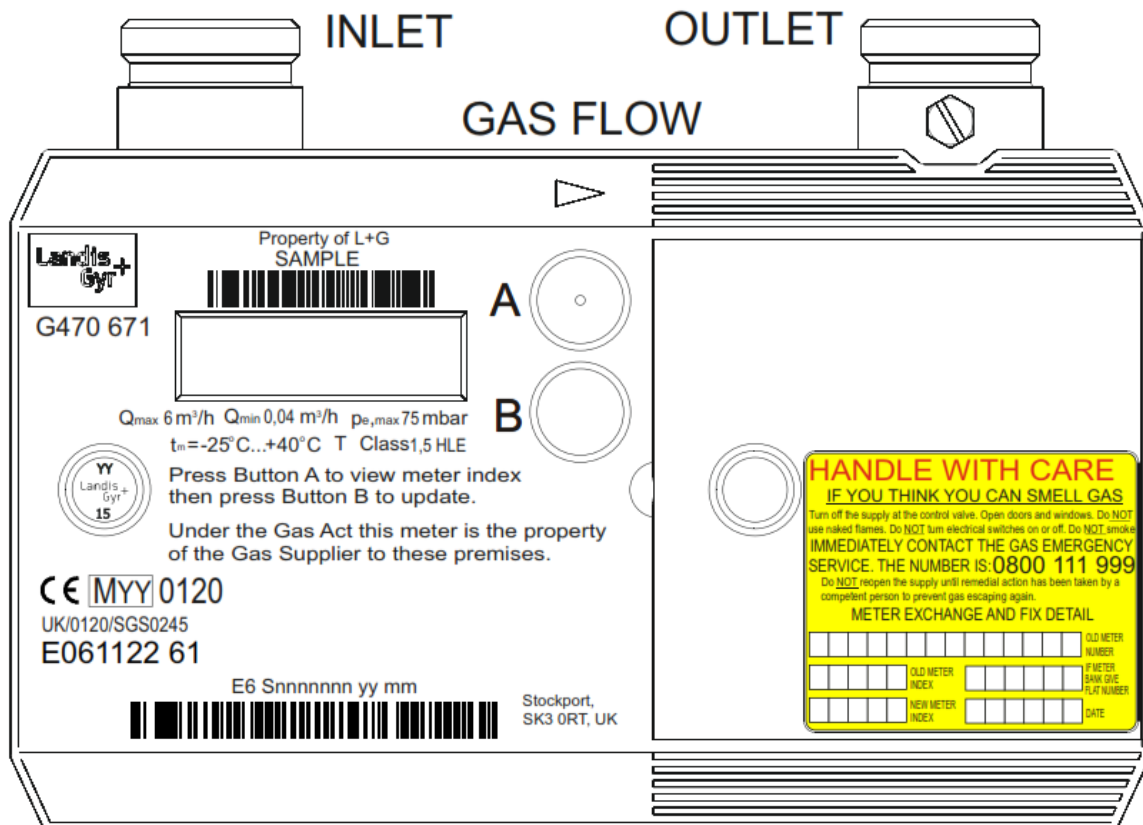
UK/ 0120/ SGS0245
5th December 2016
Issue 3

Approval Annex for EU Type Examination Cert. No. UK/ 0120/ SGS0245

Manufacturer	:	Landis + Gyr Ltd	
Type of Meter(s)	:	G470 671 E061122 61 and G470 672 E061122 61	
Description of Meter	:	Integrated E6 gas meter with internal cut-off valve, security chip and ZigBee radio module and offering SMETS1 or SMETS2 functionality	
Accuracy Class (es)	:	1.5	Software Version No : V40.05
Bill Of Materials No	:	SMETS1 -P000318000F SMETS2 -P000296140K	Boss Type : 1 inch boss to BS 746
Meter Build No	:	61	Sealing Type : Plastic laser etched seal Location : 1 x Front of meter
Integrity of Meter	:	Inaccessible without breaking seals	Temperature Range : -10°C to +40°C -25°C to +40°C
Range of Gases	:	Second Family	Maximum Operating Pressure : 75 mbar
Flow Range	:	Qmax 6.0m ³ /h Qmin 0.040m ³ /h	Orientation : Connection ports vertical

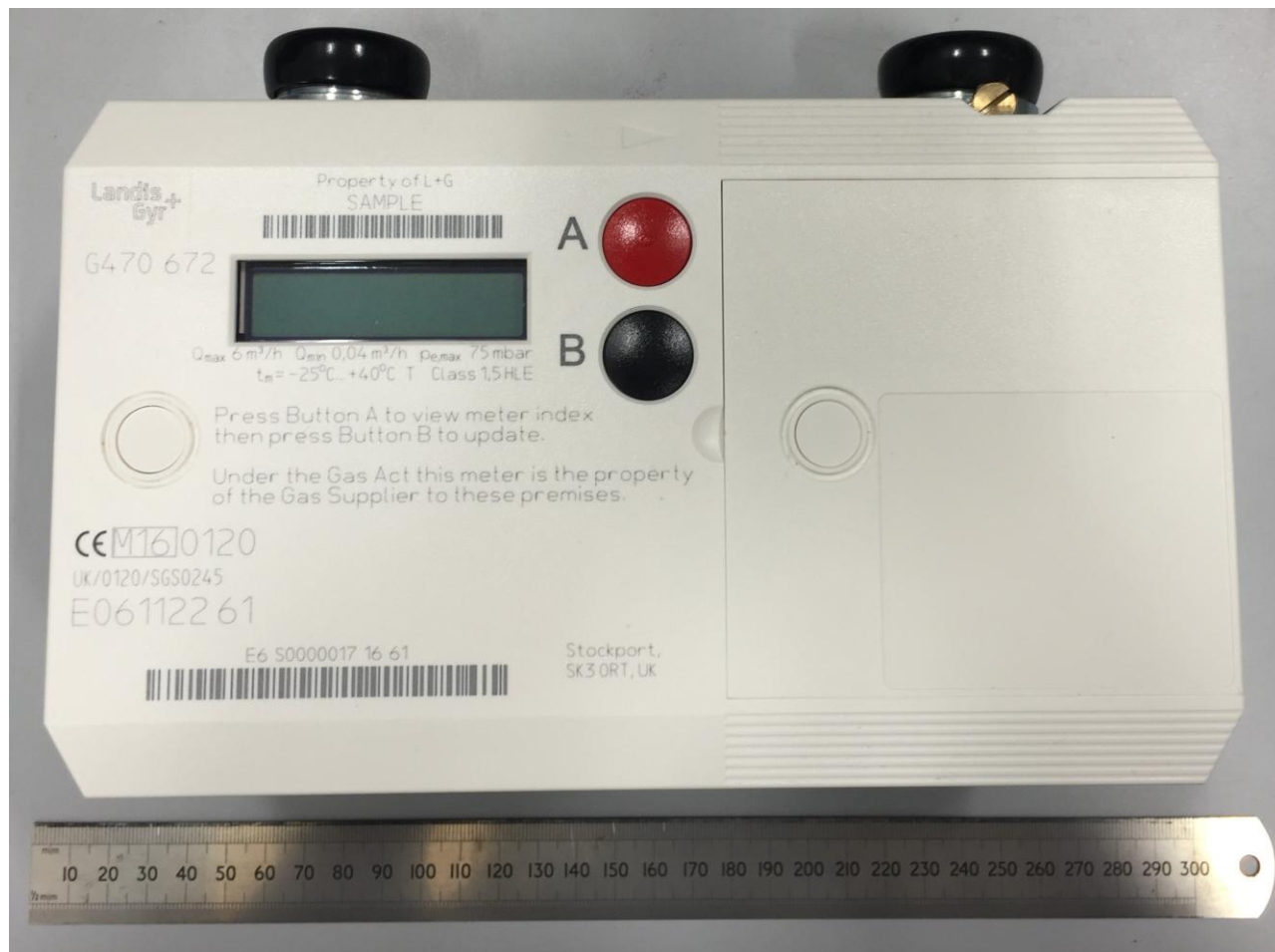
Artwork of front of meter

Integrated G470 671 E061122 61 meter showing extended ambient temperature range of -25°C to 40°C. The meter is also approved with the standard -10°C to 40°C range.



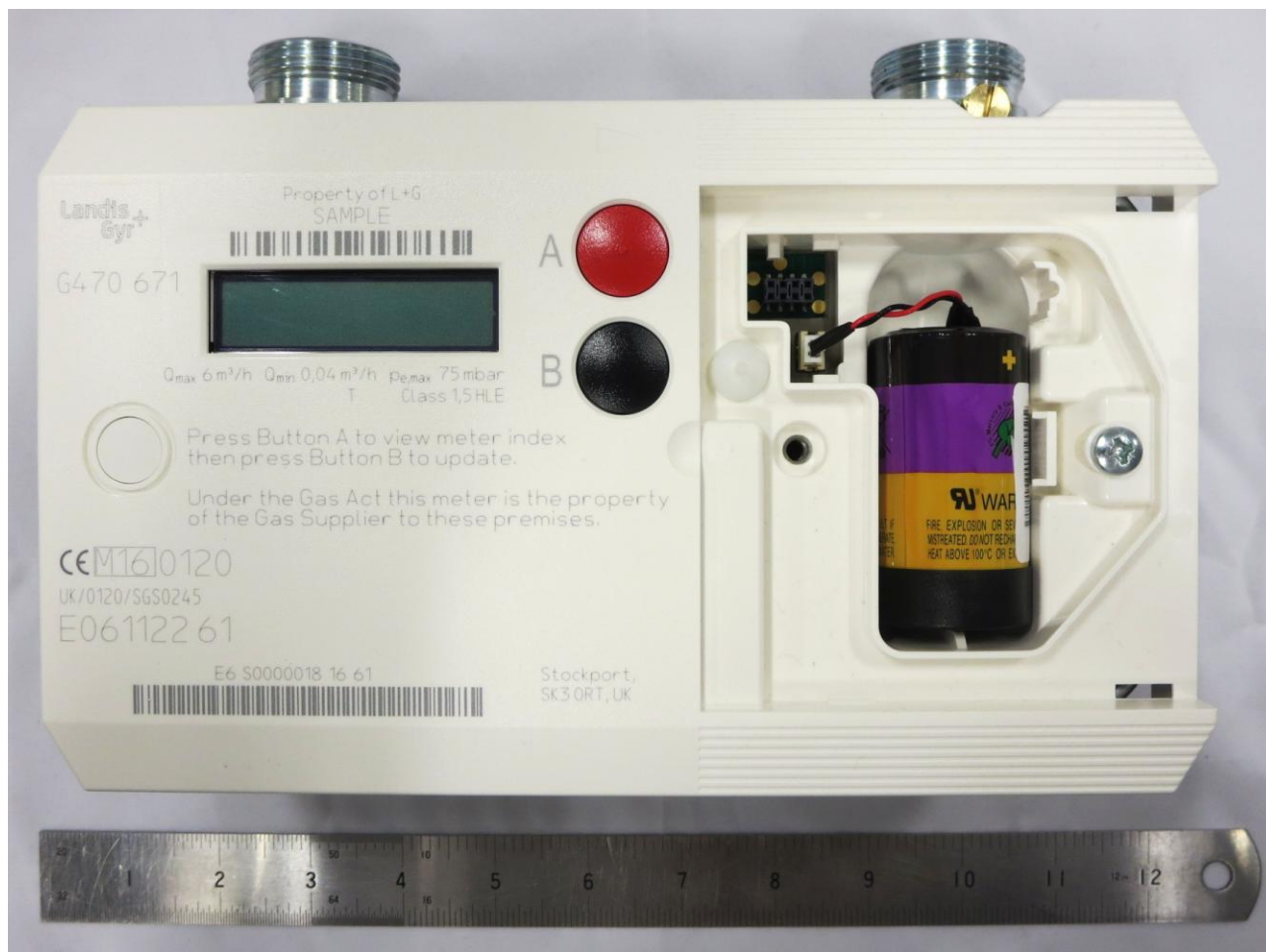
Photograph of Meter (External View)

G470 672 E061122 61 showing extended ambient temperature range of -25°C to 40°C.



Photograph of G470 671 E061122 61 Meter without Battery Cover Fitted

G470 671 E061122 61 with standard temperature range of -10°C to 40°C



Photograph of Meter Showing PCB





UK/ 0120/ SGS0245
5th December 2016
Issue 3

Landis + Gyr Smart Gas Meter G470 Type Designation

Meter
G470

Communication media
6 Zigbee

Comms Variant
7 2.4 Ghz Zigbee

Functionality / version
1 UK SMETS 1
2 UK SMETS 2

Meter Type
E Ultrasonic gas meter

Flow Capacity
06 6 m³/hr

Hardware / Firmware build options
11 with integral valve and secure encryption hardware, but no
temperature Compensation

Boss spacing
2 152 mm

Boss type
2 1 inch boss to BS 746

Meter Build standard approval number
61 ASIC generation 4, and 2 part tube



UK/ 0120/ SGS0245
5th December 2016
Issue 3

Document Revision History

Issue	Date	Comments
1	30/06/2016	Initial Issue
2	25/07/2016	Meter Type reference corrected and -25 ⁰ C to +40 ⁰ C photographs inserted
3	05//12/2016	BOM and Directive references corrected.