

EC Type Examination Certificate Number: **UK/ 0120/ SGS0091**

Landis + Gyr Ltd

Orion Business Park
Bird Hall Lane
Stockport
SK3 0RT

Instrument Identification:

**E06164 56, E06364 56, E06464 56, E06564 56, E06664 56, E06764 56,
E06864 56, E06964 56, E06B64 56, E06C64 56, E06E64 56, E06F64 56
, E06G64 56 E06H64 56, E06J64 56 and E06K64 56
E6 gas meter with internal cut-off valve with temperature compensated,
fixed pressure compensated, valve close on battery removal,
fast valve closure and increment prevention options.**

Instrument Traceable Number

UK/ 0120/ SGS0091

EC Directive 2004/22/EC

on Measuring Instruments Annex B

It is certified that the manufacturer's technical design and specimen for the above instrument has been examined
and, based on the evidence submitted, it is considered that the instrument conforms to the requirements of
MI-002 of EC Directive 2004/22/EC.

This certificate is to be used in conjunction with a certificate covering the product verification as required in Annex D
or Annex F

This certificate is valid for 10 years from 11th September 2012 until
10th September 2022

Issue 4

Certification is based on report number(s)
**UK/0120/SGS0091Ra dated 20th August 2012
UK/0120/SGS0091Rb dated 11th September 2012
UK/0120/SGS0091/iss4/Ra dated 9th October 2014**

Notified Body Number 0120

Authorised Signature



CE
0120

Notified Body

SGS United Kingdom Ltd, 202B Worle Parkway, Weston-super-Mare, BS22 6WA UK
t +44 (0)1934 522917 f +44 (0)1934 522137 www.sgs.com

Contact Address

SGS United Kingdom Ltd, Unit 10, South Industrial Estate, Bowburn, Durham, DH6 5AD UK
t +44 (0)191 377 2000 f +44 (0)191 377 2020 www.sgs.com

EC Type Examination Cert.



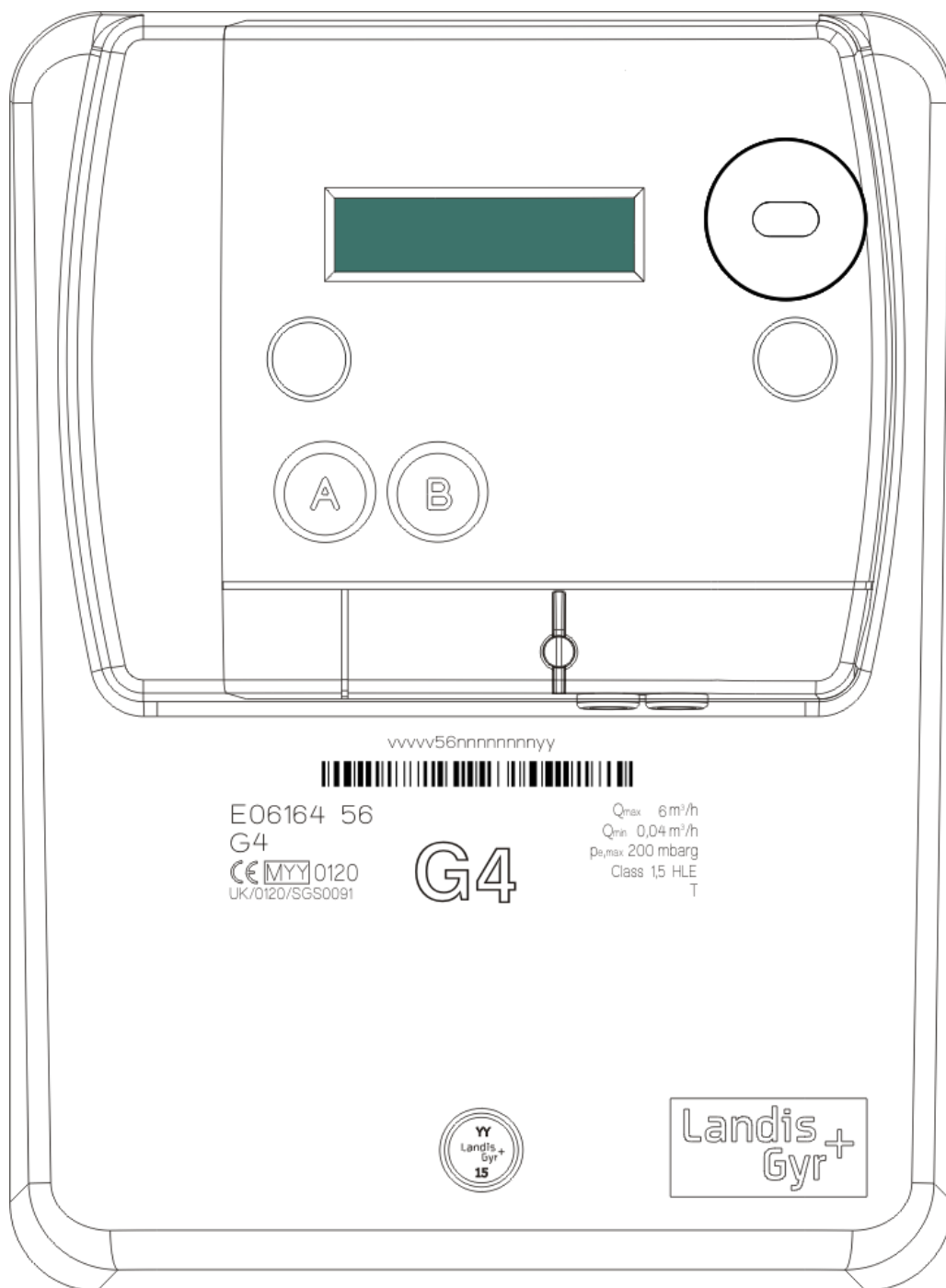
UK/ 0120/ SGS0091
9th October 2014
Issue 4

Approval Annex for EC Type Examination Cert. No. UK/ 0120/ SGS0091

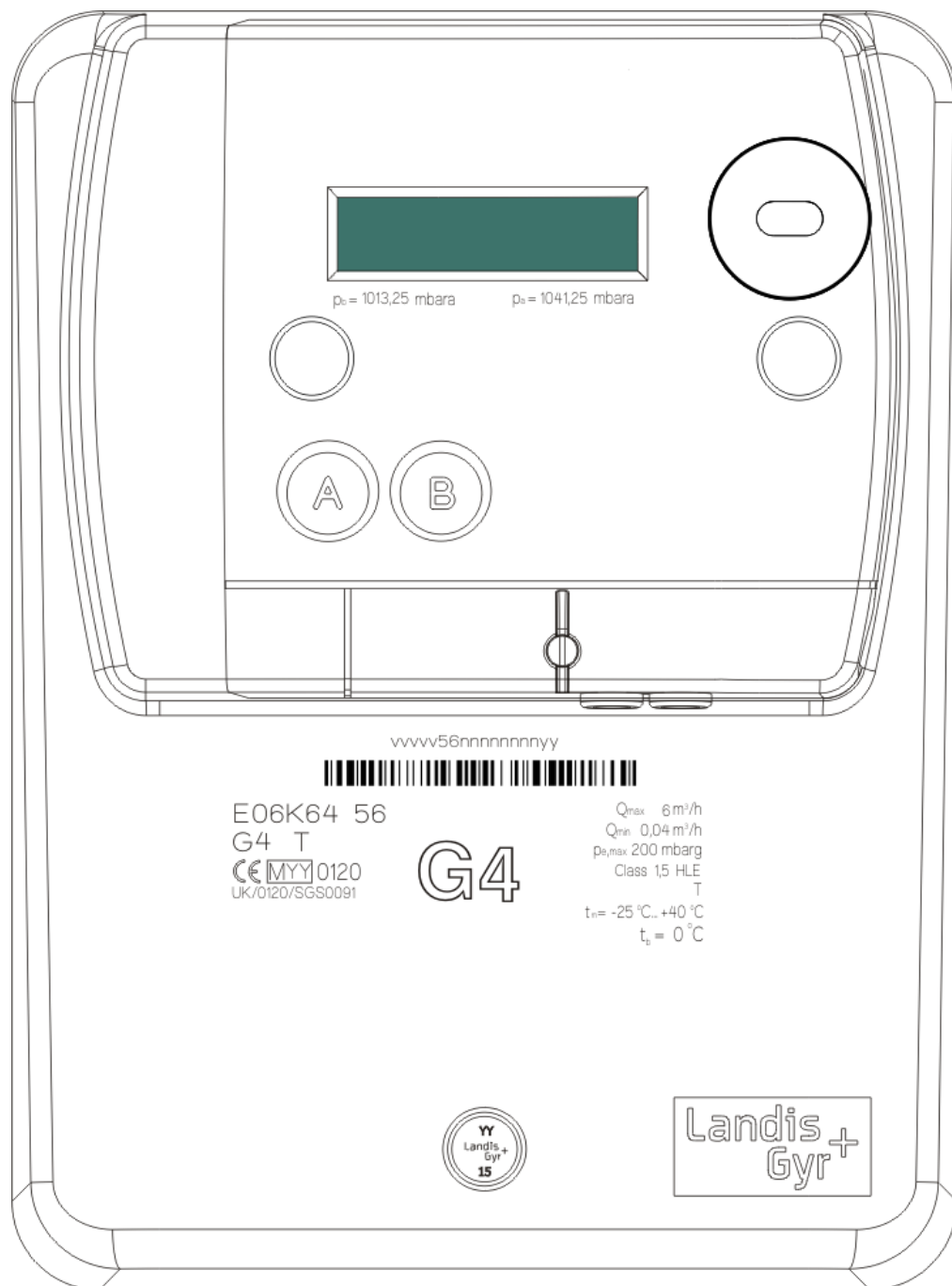
Manufacturer	:	Landis + Gyr Ltd
Type of Meter(s)	:	E06164 56, E06364 56, E06464 56, E06564 56, E06664 56, E06764 56, E06864 56, E06964 56, E06B64 56, E06C64 56, E06E64 56, E06F64 56, E06G64 56, E06H64 56, E06J64 56 E06K64 56
Description of Meter	:	E6 gas meter with internal cut-off valve with temperature compensated, fixed pressure compensated, valve close on battery removal, fast valve closure and increment prevention options. N.B. the fixed pressure compensation is performed entirely within the meter module and is only approved with the temperature compensated option
Accuracy Class (es)	:	1.5
Software Version No	:	V01.23
Bill Of Materials No	:	<div> E06164 56- P000239370B E06364 56- P000239370B E06664 56- P000239370B E06764 56- P000239370B E06B64 56- P000239370B E06C64 56- P000239370B E06G64 56- P000239370B E06H64 56- P000239370B (Meters without valve close on battery removal facility) </div>
Bill Of Materials No	:	<div> E06464 56- P000274260A E06564 56- P000274260A E06864 56- P000274260A E06964 56- P000274260A E06E64 56- P000274260A E06F64 56- P000274260A E06J64 56- P000274260A E06K64 56- P000274260A (Meters with valve close on battery removal facility) </div>
Meter Location	:	Indoor, or in suitable enclosure
Sealing Type	:	Plastic laser etched seal
Integrity of Meter	:	Inaccessible without breaking seals
Location	:	1 x Front of meter
Temperature Range	:	-10°C to +40°C :-25°C to +40°C
BaseTemperature	:	0°C, 15°C and 20°C
Range of Gases	:	Second Family
Maximum Operating Pressure	:	200 mbar
Flow Range	:	Qmax 6.0m ³ /h Qmin 0.040m ³ /h
Orientation	:	Connection ports vertical

Artwork of Meter Front

Meter E06164 56 without temperature compensation, fixed pressure compensation, valve closure on battery removal, fast valve closure or increment prevention.



Meter E06K64 56 with temperature compensation ($t_b = 0^\circ\text{C}$), fixed pressure compensation, valve closure on battery removal, fast valve closure and increment prevention.



Please note-. The options incorporated within a meter can be readily identified externally by their laser etched model numbers which take the form E06*64 56, please see the product variant identification details on page 10.

Photograph of Meter External View
(E06164 56 shown)



Photograph of Meter External View
(E06K64 56 shown)



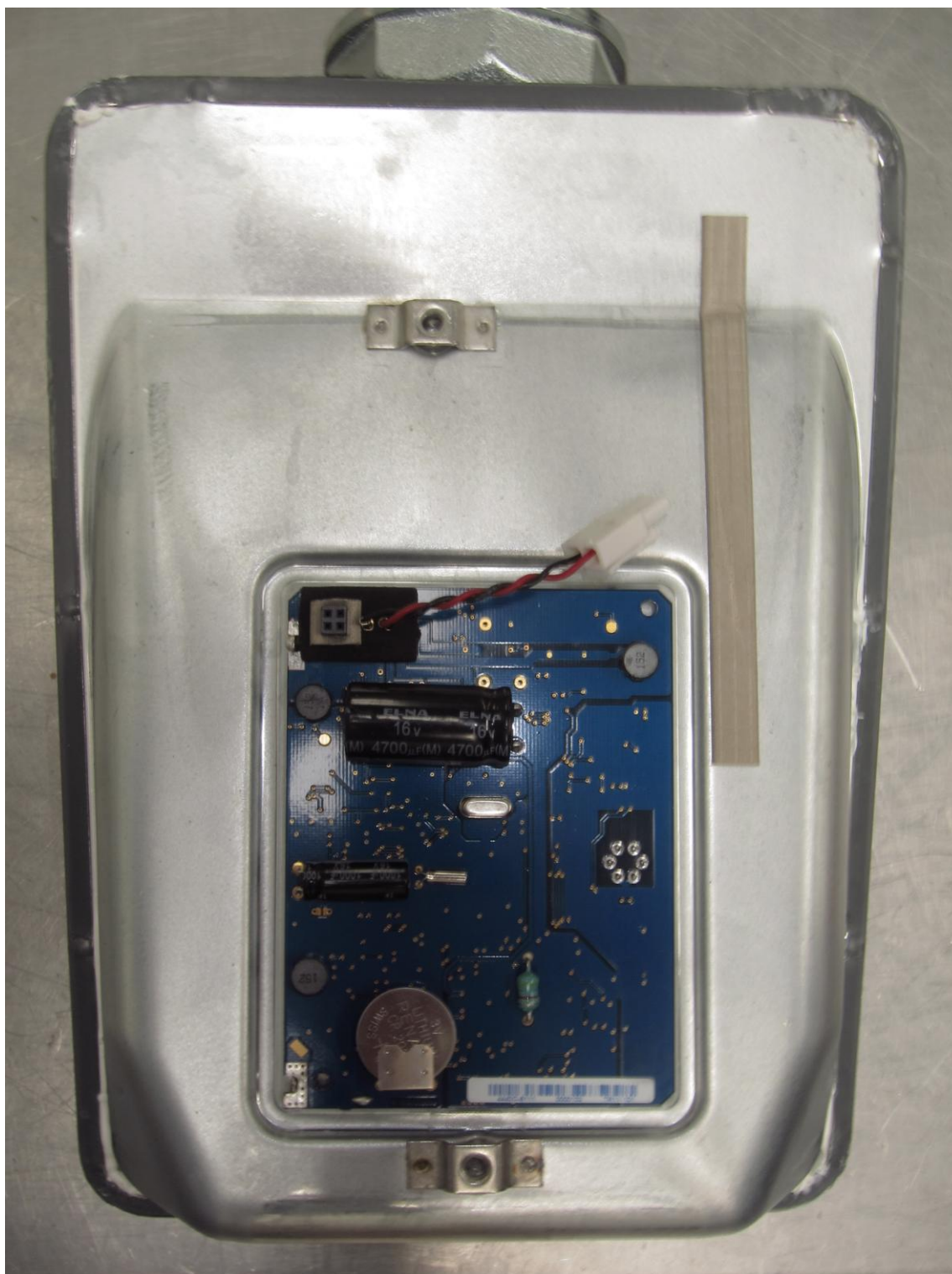
Photograph of Meter without Module Fitted
(E06164 56 shown)



Photographs of Meters Showing PCB
Meter without valve close on battery removal facility.



Meter with valve close on battery removal facility (characterised by button cell).





UK/ 0120/ SGS0091
9th October 2014
Issue 4

Product Variant Identification Details

Meter type

E Ultrasonic gas meter

Maximum flow rate Q_{max}

06 6 m³/h

Functionality

- 1 With valve, no temperature compensation, no valve close on battery removal facility, no fast valve close, no increment prevention
- 3 With valve, with temperature compensation, no valve close on battery removal facility, no fast valve close, no increment prevention
- 4 With valve, no temperature compensation, with valve close on battery removal facility, no fast valve close, no increment prevention
- 5 With valve, with temperature compensation, with valve close on battery removal facility, no fast valve close, no increment prevention
- 6 With valve, no temperature compensation, no valve close on battery removal facility, with fast valve close, no increment prevention
- 7 With valve, with temperature compensation, no valve close on battery removal facility, with fast valve close, no increment prevention
- 8 With valve, no temperature compensation, with valve close on battery removal facility, with fast valve close, no increment prevention
- 9 With valve, with temperature compensation, with valve close on battery removal facility, with fast valve close, no increment prevention
- B With valve, no temperature compensation, no valve close on battery removal facility, no fast valve close, with increment prevention
- C With valve, with temperature compensation, no valve close on battery removal facility, no fast valve close, with increment prevention
- E With valve, no temperature compensation, with valve close on battery removal facility, no fast valve close, with increment prevention
- F With valve, with temperature compensation, with valve close on battery removal facility, no fast valve close, with increment prevention
- G With valve, no temperature compensation, no valve close on battery removal facility, with fast valve close, with increment prevention
- H With valve, with temperature compensation, no valve close on battery removal facility, with fast valve close, with increment prevention
- J With valve, no temperature compensation, with valve close on battery removal facility, with fast valve close, with increment prevention
- K With valve, with temperature compensation, with valve close on battery removal facility, with fast valve close, with increment prevention

Boss spacing

6 Coaxial

Boss type

4 Co axial G2

Space

Generation (Model Number)

56 Adaptive+ enclosure, Two Part measuring tube, ASIC less, Software V01.23

Fixed pressure compensation

Pressure compensation is implemented within the meter module.
 Pressure compensation is only approved with temperature compensated versions of the meter.
 Meter modules performing fixed pressure compensation can be identified by the base pressure marking- $p_b = \text{XXXX,XX mbara}$ and assumed average input pressure marking- $p_a = \text{XXXX,XX mbara}$.
 The specific values of p_b and p_a must be agreed with the issuing notified body prior to implementation.

The modules approved for fixed pressure compensation are detailed below:

1. G350 3455 (DSMR4.2 wireless) with software version V05.00.00.19
2. G350 4555 (DSMR4.2 wired) with software version V04.00.00.20

Document Revision History

Issue	Date	Comments
1	20/08/2012	Initial Issue
2	11/09/2012	V1.10 software, rev G PCB and addition of E06664 56, E06764 56, E06864 56 and E06964 56 variants' with fast valve close capability.
3	11/09/2012	Previously omitted BOMs added.
4	09/10/2014	Extended temperature range, Increment prevention function, additional base temperatures and use of fixed pressure compensating modules and revised meter marking.