

EC Type Examination Certificate Number: **UK/ 0120/ SGS0089**

Landis + Gyr Ltd

Orion Business Park
Bird Hall Lane
Stockport
SK3 0RT

Instrument Identification:

**E0604* 56, E0614* 56, E0624* 56 E0634* 56, E0644* 56, E0654* 56,
E0664* 56, E0674* 56, E0684* 56, E0694* 56, E06A4* 56 E06B4* 56,
E06C4* 56, E06D4* 56, E06E4* 56, E06F4* 56 E06G4* 56, E06H4* 56,
E06J4* 56 and E06K4* 56**

**E6 gas meter with internal cut-off valve, temperature compensated,
fixed pressure compensated, valve close on battery removal, fast valve
closure and increment prevention options**

Instrument Traceable Number

UK/ 0120/ SGS0089

EC Directive 2004/22/EC

on Measuring Instruments Annex B

It is certified that the manufacturer's technical design and specimen for the above instrument has been examined and, based on the evidence submitted, it is considered that the instrument conforms to the requirements of MI-002 of EC Directive 2004/22/EC.

This certificate is to be used in conjunction with a certificate covering the product verification as required in Annex D or Annex F

This certificate is valid for 10 years until 12th April 2022

Issue 10

Certification is based on report number(s) **UK/0120/SGS0089Ra dated 13th April 2012**
UK/0120/SGS0089Rb dated 13th November 2012
UK/0120/SGS0089Rc dated 24th April 2013
UK/0120/SGS0089/iss5/Ra dated 19th July 2013
UK/0120/SGS0089/iss6/Ra dated 20th March 2014
UK/0120/SGS0089/iss7/Ra dated 1st December 2014
UK/0120/SGS0089/iss9/Ra dated 31st March 2016

Notified Body Number 0120

Authorised Signature



Notified Body

SGS United Kingdom Ltd, 202B Worle Parkway, Weston-super-Mare, BS22 6WA UK
t +44 (0)1934 522917 f +44 (0)1934 522137 www.sgs.com

Contact Address

SGS United Kingdom Ltd, Unit 10, South Industrial Estate, Bowburn, Durham, DH6 5AD UK
t +44 (0)191 377 2000 f +44 (0)191 377 2020 www.sgs.com

EC Type Examination Cert.

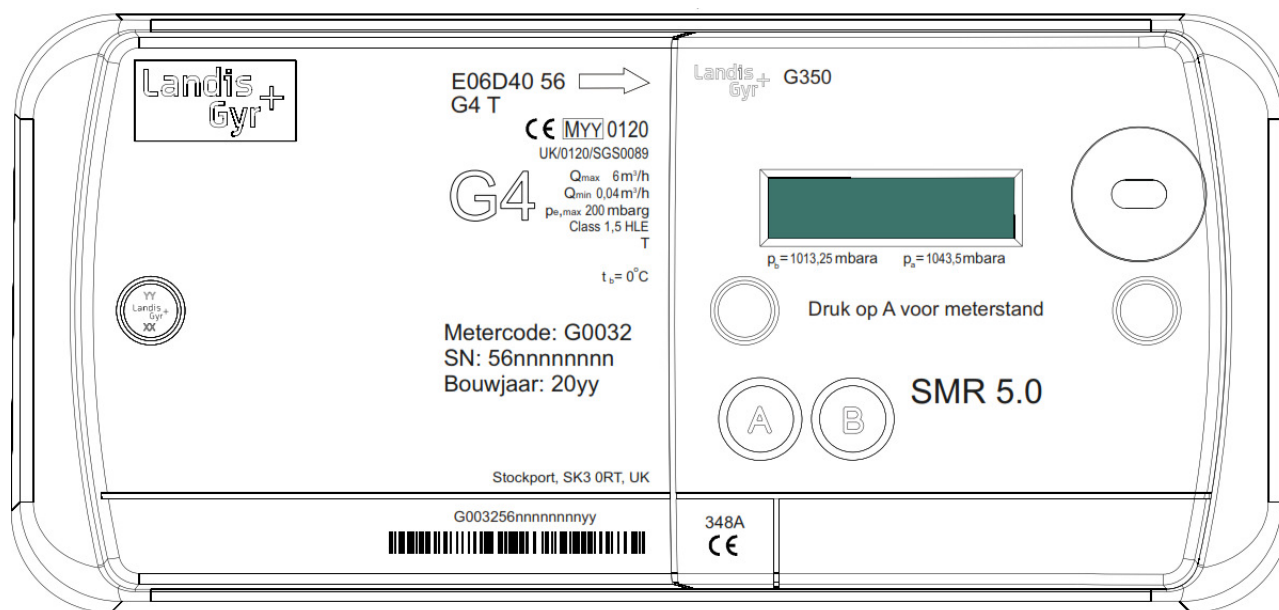
CE
0120

Approval Annex for EC Type Examination Cert. No. UK/ 0120/ SGS0089

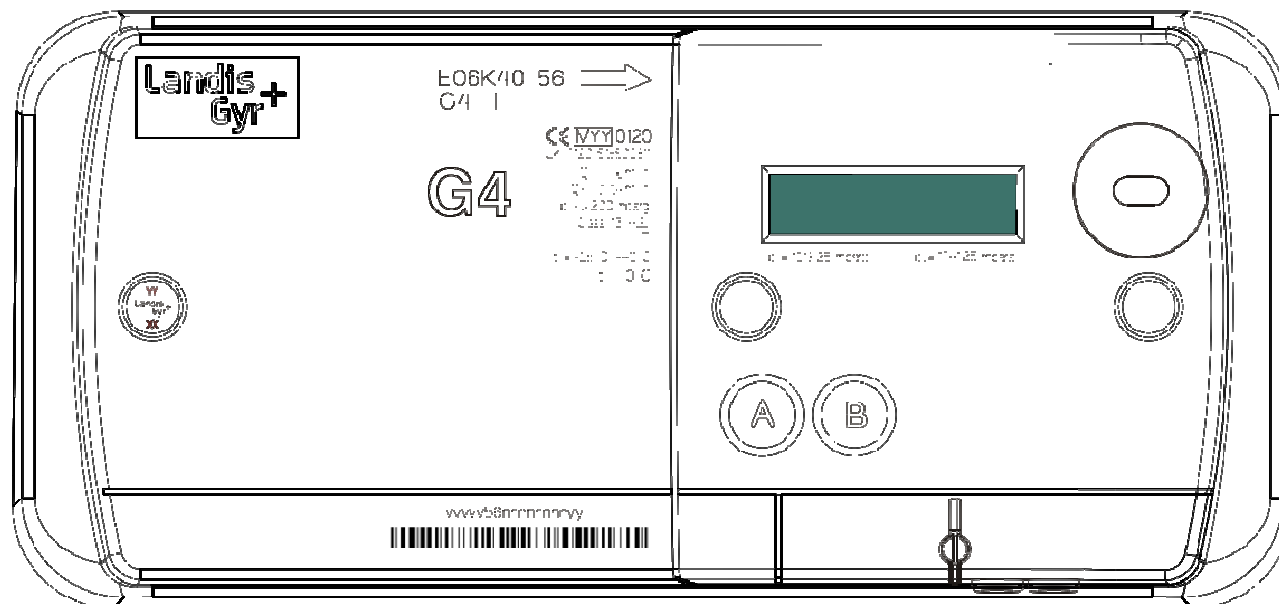
Manufacturer :		Landis + Gyr Ltd
Type of Meter(s) :		E0604* 56, E0614* 56, E0624* 56 E0634* 56, E0644* 56, E0654* 56, E0664* 56, E0674* 56, E0684* 56, E0694* 56, E06A4* 56, E06B4* 56, E06C4* 56, E06D4* 56, E06E4* 56, E06F4* 56E06G4* 56, E06H4* 56, E06J4* 56 and E06K4* 56
Description of Meter :		E6 gas meter with internal cut-off valve, temperature compensated, fixed pressure compensated, valve close on battery removal, fast valve closure and increment prevention options. N.B. the fixed pressure compensation is performed entirely within the meter module and is only approved with the temperature compensated option.
Accuracy Class (es) :		1.5
Software Version No:		V01.23 (all valved meters) V10.00 (valveless meters)
Bill Of Materials No :		Bill Of Materials No :
(Meters without valve close on battery removal facility)		(Meters with valve close on battery removal facility)
E0614* 56- P000231690E E0634* 56- P000231690E E0664* 56- P000231690E E0674* 56- P000231690E E06B4* 56- P000231690E E06C4* 56- P000231690E E06G4* 56- P000231690E E06H4* 56- P000231690E		E0644* 56- P000239270B E0654* 56- P000239270B E0684* 56- P000239270B E0694* 56- P000239270B E06E4* 56- P000239270B E06F4* 56- P000239270B E06J4* 56- P000239270B E06K4* 56- P000239270B
(Meters without internal cut-off valve)		
E0604* 56- P000290170A E0624* 56- P000290170A E06A4* 56- P000290170A E06D4* 56- P000290170A		
Meter Location :		Indoor, or in suitable enclosure
Sealing Type :		Plastic laser etched seal
Integrity of Meter :		Inaccessible without breaking seals
Location :		1 x Front of meter
Temperature Range :		-10°C to +40°C -25°C to +40°C
Base Temperature :		0°C, 15°C and 20°C
Range of Gases :		Second Family
Maximum Operating Pressure :		200 mbar
Flow Range :		Qmax 6.0m ³ /h Qmin 0.040m ³ /h
Orientation :		Connection ports vertical

Artwork of front of meter

Meter E06D40 56- No valve, with temperature compensation, no valve close on battery removal facility, no fast valve close, with increment prevention.



Meter E06K40 56- with internal valve, temperature compensation ($t_b=0^{\circ}\text{C}$), fixed pressure compensation, valve close on battery removal, fast valve closure extended temperature range and increment prevention.



Please note-. The options incorporated within a meter can be readily identified externally by their laser etched model numbers which take the form E06*4* 56, please see the product variant identification details on page 6

Photograph of Meter (External View)

(E06D40 56 shown)



Meter incorporating fixed pressure correction (identified by p_b and p_a markings on the module). The photograph shows a meter with the base temperature $t_b=0^{\circ}C$ marked on the front of the base meter.

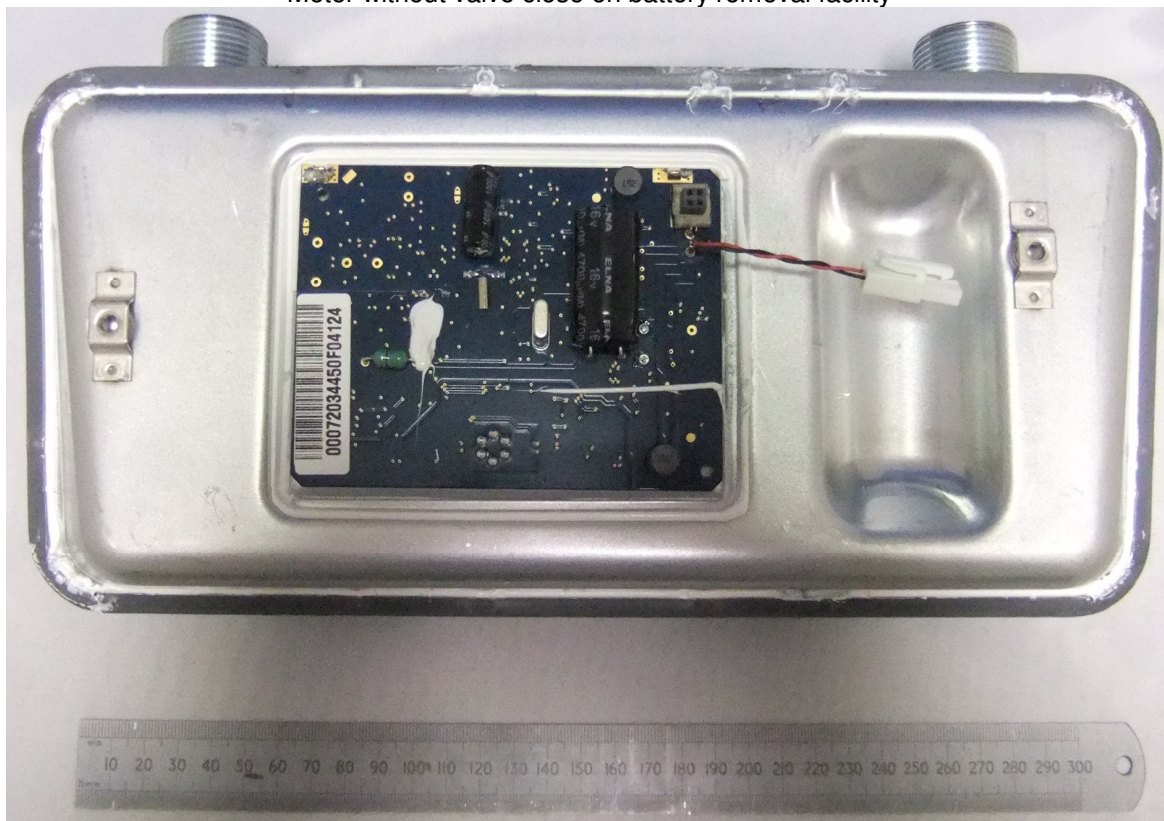
Photograph of Meter without Module Fitted

(E06K40 56 shown)

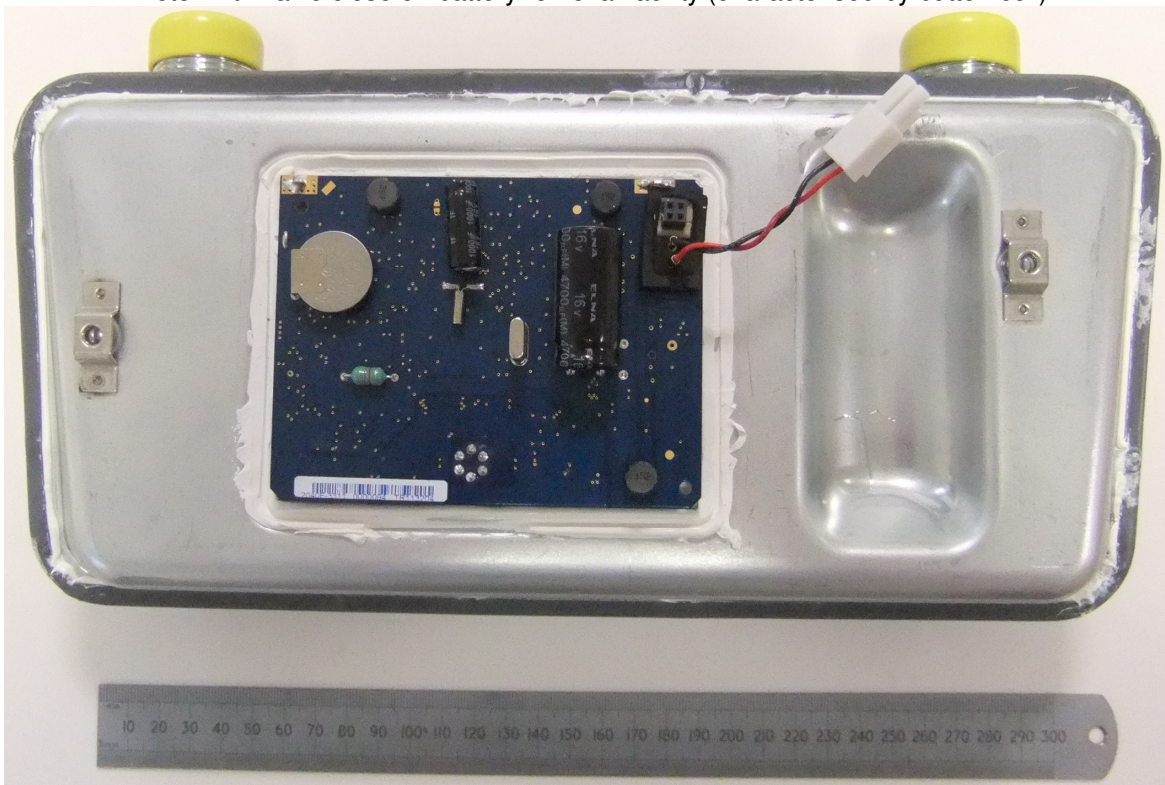


Photographs of Meters Showing PCB

Meter without valve close on battery removal facility



Meter with valve close on battery removal facility (characterised by button cell)



Product Variant Identification Details:

Meter type

E Ultrasonic gas meter

Maximum flow rate Q_{max}

06 6 m³/h

Functionality

- 0 No valve, no temperature compensation, no valve close on battery removal facility, no fast valve close, no increment prevention
- 1 With valve, no temperature compensation, no valve close on battery removal facility, no fast valve close, no increment prevention
- 2 No valve, with temperature compensation, no valve close on battery removal facility, no fast valve close, no increment prevention
- 3 With valve, with temperature compensation, no valve close on battery removal facility, no fast valve close, no increment prevention
- 4 With valve, no temperature compensation, with valve close on battery removal facility, no fast valve close, no increment prevention
- 5 With valve, with temperature compensation, with valve close on battery removal facility, no fast valve close, no increment prevention
- 6 With valve, no temperature compensation, no valve close on battery removal facility, with fast valve close, no increment prevention
- 7 With valve, with temperature compensation, no valve close on battery removal facility, with fast valve close, no increment prevention
- 8 With valve, no temperature compensation, with valve close on battery removal facility, with fast valve close, no increment prevention
- 9 With valve, with temperature compensation, with valve close on battery removal facility, with fast valve close, no increment prevention
- A No valve, no temperature compensation, no valve close on battery removal facility, no fast valve close, with increment prevention
- B With valve, no temperature compensation, no valve close on battery removal facility, no fast valve close, with increment prevention
- C With valve, with temperature compensation, no valve close on battery removal facility, no fast valve close, with increment prevention
- D No valve, with temperature compensation, no valve close on battery removal facility, no fast valve close, with increment prevention
- E With valve, no temperature compensation, with valve close on battery removal facility, no fast valve close, with increment prevention
- F With valve, with temperature compensation, with valve close on battery removal facility, no fast valve close, with increment prevention
- G With valve, no temperature compensation, no valve close on battery removal facility, with fast valve close, with increment prevention
- H With valve, with temperature compensation, no valve close on battery removal facility, with fast valve close, with increment prevention
- J With valve, no temperature compensation, with valve close on battery removal facility, with fast valve close, with increment prevention
- K With valve, with temperature compensation, with valve close on battery removal facility, with fast valve close, with increment prevention

Boss spacing

4 220mm

Boss type

- 0 ¾ inch boss to NEN 3084
- 1 ¾ inch boss to ISO 228-1 class B
- 2 1 inch boss to BS 746

3 G1¼ ISO 228-1 Class B

Space

Generation (Model Number)

56 Adaptive+ enclosure, Two Part measuring tube, ASIC less,
 V01.23 Software for meters with internal valve
 V10.00 software for meter without internal valve

Fixed pressure compensation

Pressure compensation is implemented within the meter module.
 Pressure compensation is only approved with temperature compensated versions of the meter.
 Meter modules performing fixed pressure compensation can be identified by the base pressure marking- p_b =XXXX,XX mbara and assumed average input pressure marking- p_a = XXXX,XX mbara.
 The specific values of p_b and p_a must be agreed with the issuing notified body prior to implementation.

Pulse Mode

A Pulse output mode is implemented within the meter module.
 The pulses are produced by turning the LCD back light on and off. Due to battery life considerations the pulse mode is only available for a maximum of 120 minutes per year.

The modules approved for fixed pressure compensation and pulse mode are detailed below:

1. G350 3455 (DSMR4.2 wireless) with software version V05.00.00.19
2. G350 3455 (DSMR4.2.2 wireless) with software version V05.00.03.00
3. G350 4555 (DSMR4.2 wired) with software version V04.00.00.20
4. G350 348A (SMR5) V08.00.05.00

Modifications to the meters described according to approval No.UK/ 0120/ SGS0089 must be notified to the issuing body to confirm the meter's continuing compliance to the relevant pattern approval standard(s).
 All modifications to the meter module relating to fixed pressure compensation, pulse output, the meter index, the module case cover, buttons, window and sealing arrangement must also be agreed with the issuing body before being implemented.

Document Revision History

Issue	Date	Comments
1	13/04/2012	Initial Issue
2	13/11/2012	V1.10 software, rev G PCB and addition of E0664* 56, E0674* 56, E0684* 56 and E0694* 56 variants' with fast valve close capability.
3	25/04/2013	Approval of fixed pressure compensating modules and revised meter marking.
4	13/4/2013	Photograph of meter corrected.

5	19/07/2013	Increment detection option added.
6	20/04/2014	Revised t_b , p_a and p_b values.
7	01/12/2014	No valve option added, extended temperature range & alternative EEPROM.
8	02/12/2014	BOM error corrected
9	31/03/2016	Approval of SMR5 module incorporating fixed pressure compensation and pulse output functions
10	26/02/2018	No valve meter E06D4* 56 BOM number P00029017DA corrected to P000290170A