

EC Type Examination Certificate Number: **UK/ 0120/ SGS0088**

Landis + Gyr Ltd

Orion Business Park
Bird Hall Lane
Stockport
SK3 0RT

Instrument Identification:

**E0611* 56, E0631* 56, E0641* 56, E0651* 56, E0661* 56, E0671* 56,
E0681* 56, E0691* 56, E06B1* 56, E06C1* 56, E06E1* 56, E06F1* 56
E06G1* 56, E06H1* 56, E06J1* 56, E06K1* 56**

**E6 gas meter with internal cut-off valve with temperature
compensated, fixed pressure compensated,
valve close on battery removal, fast valve closure
and increment prevention options**

Instrument Traceable Number

UK/ 0120/ SGS0088

EC Directive 2004/22/EC

on Measuring Instruments Annex B

It is certified that the manufacturer's technical design and specimen for the above instrument has been examined and, based on the evidence submitted, it is considered that the instrument conforms to the requirements of MI-002 of EC Directive 2004/22/EC.

This certificate is to be used in conjunction with a certificate covering the product verification as required in Annex D or Annex F

This certificate is valid until 3rd February 2023

Issue 5

Certification is based on report number(s) **UK/0120/SGS0088Ra dated 4th February 2013
UK/0120/SGS0088/iss3/Ra dated 26th March 2014
UK/0120/SGS0088/iss4/Ra dated 28th April 2014
UK/0120/SGS0088/iss3Rb dated 8th July 2016**

Notified Body Number 0120

CE
0120

Authorised Signature
Jan Saunders



Notified Body

SGS United Kingdom Ltd, 202B Worle Parkway, Weston-super-Mare, BS22 6WA UK
t +44 (0)1934 522917 f +44 (0)1934 522137 www.sgs.com

Contact Address

SGS United Kingdom Ltd, Unit 10, South Industrial Estate, Bowburn, Durham, DH6 5AD UK
t +44 (0)191 377 2000 f +44 (0)191 377 2020 www.sgs.com

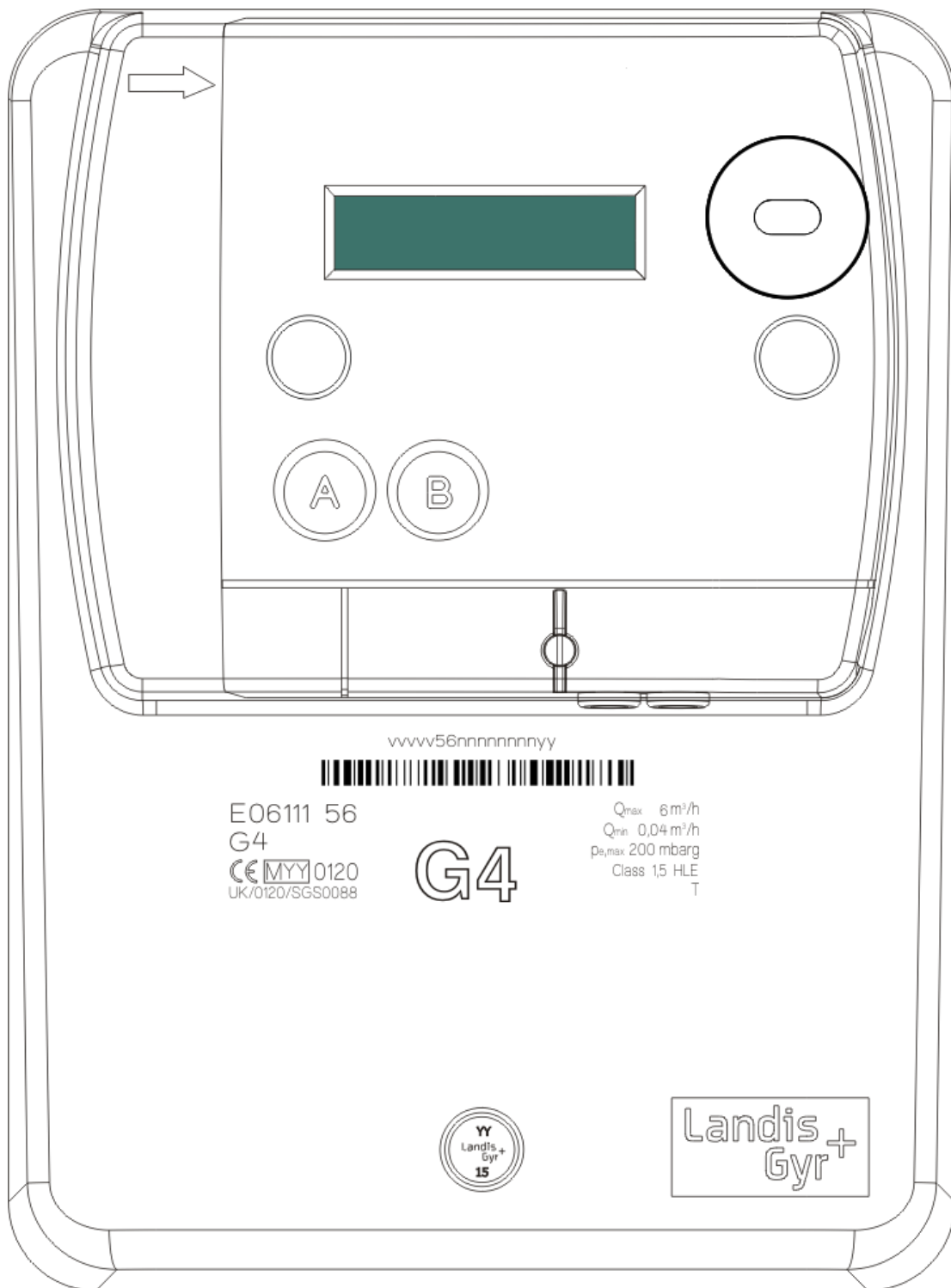
EC Type Examination Cert.

Approval Annex for EC Type Examination Cert. No. UK/ 0120/ SGS0088

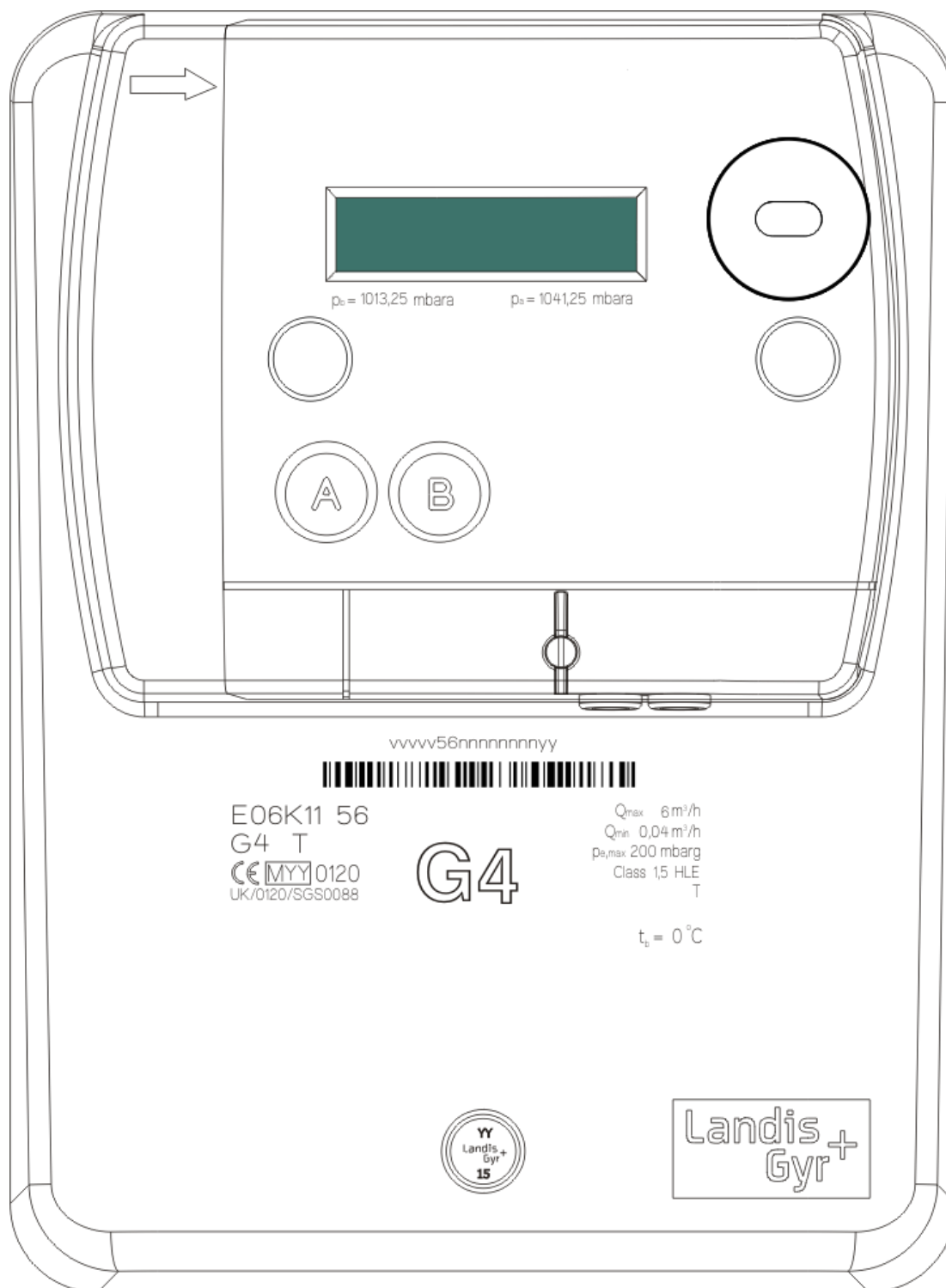
Manufacturer :		Landis + Gyr Ltd	
Type of Meter(s) :		E0611* 56, E0631* 56, E0641* 56, E0651* 56, E0661* 56, E0671* 56, E0681* 56, E0691* 56, E06B1* 56, E06C1* 56, E06E1*56, E06F1*56, E06G1*56, E06H1*56, E06J1* 56 and E06K1* 56	
Description of Meter :		E6 gas meter with internal cut-off valve with temperature compensated, fixed pressure compensated, valve close on battery removal, fast valve closure and increment prevention options. N.B. the fixed pressure compensation is performed entirely within the meter module and is only approved with the temperature compensated option.	
Accuracy Class (es) :		1.5	Software Version No : V01.23
Meter Variant	Bill Of Materials No	Meter Variant	Bill Of Materials No
E0611* 56-	P000239410B	E0641* 56-	P000274240A
E0631* 56-	P000239410B	E0651* 56-	P000274240A
E0661* 56-	P000239410B	E0681* 56-	P000274240A
E0671* 56-	P000239410B	E0691* 56-	P000274240A
E06B1* 56-	P000239410B	E06E1* 56-	P000274240A
E06C1* 56-	P000239410B	E06F1* 56-	P000274240A
E06G1* 56-	P000239410B	E06J1* 56-	P000274240A
E06H1* 56-	P000239410B	E06K1* 56-	P000274240A
(Meters with ¾ boss without valve close on battery removal facility)		(Meters with ¾ boss and valve close on battery removal facility)	
Meter Variant	Bill Of Materials No	Meter Variant	Bill Of Materials No
E06113 56-	P000265640A	E06413 56-	P000274420A
E06313 56-	P000265640A	E06513 56-	P000274420A
E06613 56-	P000265640A	E06813 56-	P000274420A
E06713 56-	P000265640A	E06913 56-	P000274420A
E06B13 56-	P000265640A	E06E13 56-	P000274420A
E06C13 56-	P000265640A	E06F13 56-	P000274420A
E06G13 56-	P000265640A	E06J13 56-	P000274420A
E06H13 56-	P000265640A	E06K13 56-	P000274420A
(Meters with G1¼ ISO 228-1 Class B boss without valve close on battery removal facility)		(Meters with G1¼ ISO 228-1 Class B boss and valve close on battery removal facility)	
Meter Location :		Sealing Type :	Plastic laser etched seal
Indoor, or in suitable enclosure		Location :	1 x Front of meter
Integrity of Meter :		Temperature Range :	-10°C to +40°C
Inaccessible without breaking seals		Base Temperature :	0°C, 15°C and 20°C
Range of Gases :		Maximum Operating Pressure :	
Second Family		200 mbar	
Flow Range :		Orientation :	
Qmax 6.0m ³ /h Qmin 0.040m ³ /h		Connection ports vertical	

Artwork of front of meter

Meter E06111 56 without temperature compensation, fixed pressure compensation, valve close on battery removal, fast valve closure or increment prevention.



Meter E06K11 56 with temperature compensation ($t_b=0^{\circ}\text{C}$), fixed pressure compensation, valve close on battery removal, fast valve closure and increment prevention.



Please note-. The options incorporated within a meter can be readily identified externally by their laser etched model numbers which take the form E06*1* 56, please see the product variant identification details on page 9

Photograph of Meter (External View)

(E06K11 56 shown)



Meter incorporating fixed pressure correction (identified by p_b and p_a markings on the module). The photograph shows a meter with $t_b=0^\circ\text{C}$ the base temperature is marked on the front of the base meter .

Photograph of Meter without Module Fitted

(E06K11 56 shown)



Photographs of Meters Showing PCB

Meter without valve close on battery removal facility



Meter with valve close on battery removal facility (characterised by button cell)





Product Variant Identification Details:

Meter type

E Ultrasonic gas meter

Maximum flow rate Q_{max}

06 6 m³/h

Functionality

- 1 With valve, no temperature compensation, no valve close on battery removal facility, no fast valve close, no increment prevention
- 3 With valve, with temperature compensation, no valve close on battery removal facility, no fast valve close, no increment prevention
- 4 With valve, no temperature compensation, with valve close on battery removal facility, no fast valve close, no increment prevention
- 5 With valve, with temperature compensation, with valve close on battery removal facility, no fast valve close, no increment prevention
- 6 With valve, no temperature compensation, no valve close on battery removal facility, with fast valve close, no increment prevention
- 7 With valve, with temperature compensation, no valve close on battery removal facility, with fast valve close, no increment prevention
- 8 With valve, no temperature compensation, with valve close on battery removal facility, with fast valve close, no increment prevention
- 9 With valve, with temperature compensation, with valve close on battery removal facility, with fast valve close, no increment prevention
- B With valve, no temperature compensation, no valve close on battery removal facility, no fast valve close, with increment prevention
- C With valve, with temperature compensation, no valve close on battery removal facility, no fast valve close, with increment prevention
- E With valve, no temperature compensation, with valve close on battery removal facility, no fast valve close, with increment prevention
- F With valve, with temperature compensation, with valve close on battery removal facility, no fast valve close, with increment prevention
- G With valve, no temperature compensation, no valve close on battery removal facility, with fast valve close, with increment prevention
- H With valve, with temperature compensation, no valve close on battery removal facility, with fast valve close, with increment prevention
- J With valve, no temperature compensation, with valve close on battery removal facility, with fast valve close, with increment prevention
- K With valve, with temperature compensation, with valve close on battery removal facility, with fast valve close, with increment prevention

Boss spacing

1 110mm

Boss type

- 0 ¾ inch boss to NEN 3084
- 1 ¾ inch boss to ISO 228-1 class B
- 2 1 inch boss to BS 746
- 3 G1¼ ISO 228-1 Class B

Space

Generation (Model Number)

56 Adaptive+ enclosure, Two Part measuring tube, ASIC less, Software V2.23

Fixed pressure compensation

Pressure compensation is implemented within the meter module.
 Pressure compensation is only approved with temperature compensated versions of the meter.
 Meter modules performing fixed pressure compensation can be identified by the base pressure marking- p_b =XXXX,XX mbara and assumed average input pressure marking- p_a = XXXX,XX mbara.
 The specific values of p_b and p_a must be agreed with the issuing notified body prior to implementation.

The modules approved for fixed pressure compensation are detailed below:

1. G350 3455 (DSMR4.2 wireless) with software version V05.00.00.19
2. G350 4555 (DSMR4.2 wired) with software version V04.00.00.20

Modifications to the meters described according to approval No.UK/ 0120/ SGS0088 must be notified to the issuing body to confirm the meter's continuing compliance to the relevant pattern approval standard(s).
 All modifications to the meter module relating to fixed pressure compensation, pulse output, the meter index, the module case cover, buttons, window and sealing arrangement must also be agreed with the issuing body before being implemented.

Document Revision History

Issue	Date	Comments
1	04/02/2013	Initial Issue
2	25/11/2013	Increment prevention option added
3	26/03/2014	Errors in MID report amended
4	28/04/2014	Revised p_a and p_b values
5	20/07/2016	Modified and reissued report due to statement inserted into report that the permissible errors and gas gas-air relationship tests were performed by Landis + Gyr