

EC Type Examination Certificate Number: **UK/ 0120/ SGS0087**

Landis + Gyr Ltd

Orion Business Park
Bird Hall Lane
Stockport
SK3 0RT

Instrument Identification:

**E0612* 56, E0632* 56, E0642* 56, E0652* 56, E0662* 56, E0672* 56,
E0682* 56, E0692* 56, E06B2* 56, E06C2* 56, E06E2* 56, E06F2* 56,
E06G2* 56, E06H2* 56, E06J2* 56, E06K2* 56**

**E6 gas meter with internal cut-off valve with temperature
compensated, valve close on battery removal, fast valve closure
and increment prevention options**

Instrument Traceable Number

UK/ 0120/ SGS0087

EC Directive 2004/22/EC

on Measuring Instruments Annex B

It is certified that the manufacturer's technical design and specimen for the above instrument has been examined
and, based on the evidence submitted, it is considered that the instrument conforms to the requirements of
MI-002 of EC Directive 2004/22/EC.

This certificate is to be used in conjunction with a certificate covering the product verification as required in Annex
D or Annex F

This certificate is valid for 10 years from 5th August 2011 until 4th August 2021

Issue 4

Notified Body Number 0120

Certification is based on report number(s) MID-B-149353 dated 5th August 2011

UK/0120/SGS0087Rb dated 26th August 2011

UK/0120/SGS0087/iss3/Ra dated 9th June 2014

UK/0120/SGS0087/iss4/Ra dated 10th June 2014

**CE
0120**

Authorised Signature

Jan Saunders



Notified Body

SGS United Kingdom Ltd, 202B Worle Parkway, Weston-super-Mare, BS22 6WA UK

t +44 (0)1934 522917 f +44 (0)1934 522137 www.sgs.com

Contact Address

SGS United Kingdom Ltd, Unit 10, South Industrial Estate, Bowburn, Durham, DH6 5AD UK

t +44 (0)191 377 2000 f +44 (0)191 377 2020 www.sgs.com

EC Type Examination Cert.



UK/ 0120/ SGS0087

10th June 2014

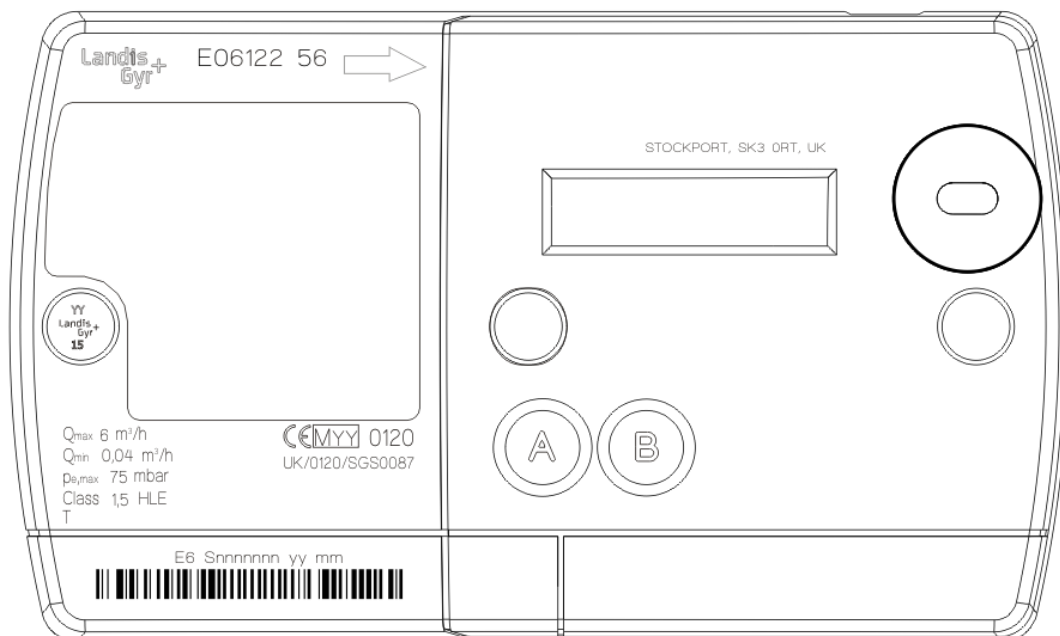
Issue 4

Approval Annex for EC Type Examination Cert. No. UK/ 0120/ SGS0087

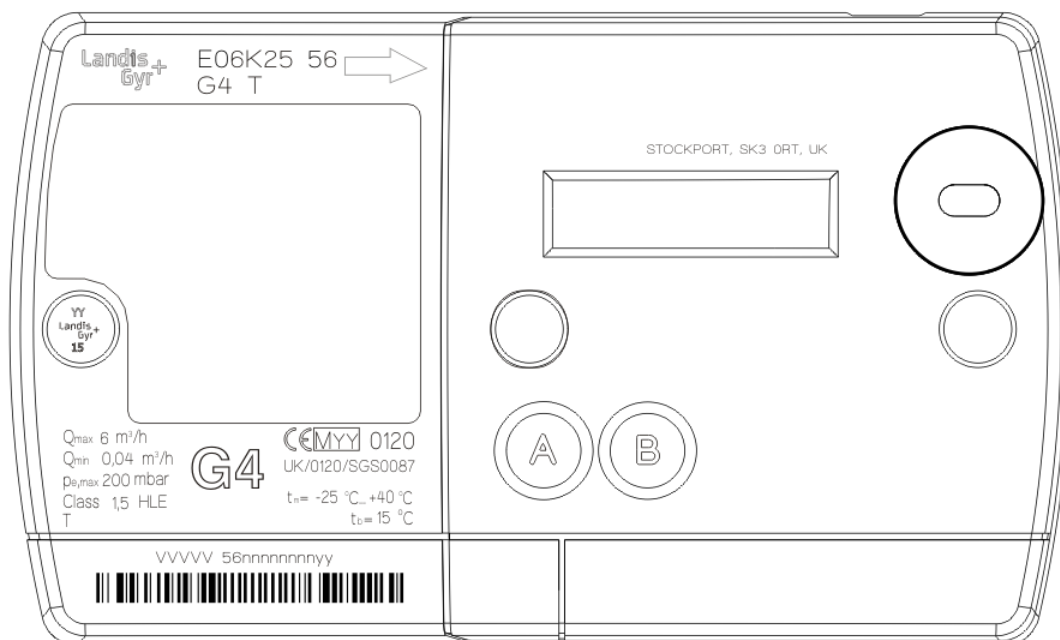
Manufacturer :		Landis + Gyr Ltd	
Type of Meter(s) :		E0612* 56, E0632* 56, E0642* 56, E0652* 56, E0662* 56, E0672* 56, E0682* 56, E0692* 56, E06B2* 56, E06C2* 56, E06E2* 56, E06F2* 56, E06G2* 56, E06H2* 56, E06J2* 56 and E06K2* 56	
Description of Meter :		E6 gas meter with internal cut-off valve with temperature compensated, valve close on battery removal, fast valve closure and increment prevention options.	
Accuracy Class (es) :		1.5	Software Version No : V01.23
Meter Variant	Bill Of Materials No	Meter Variant	Bill Of Materials No
E06122 56-	P000225890G	E06422 56-	P000225110E
E06322 56-	P000225890G	E06522 56-	P000225110E
E06622 56-	P000225890G	E06822 56-	P000225110E
E06722 56-	P000225890G	E06922 56-	P000225110E
E06B22 56-	P000225890G	E06E22 56-	P000225110E
E06C22 56-	P000225890G	E06F22 56-	P000225110E
E06G22 56-	P000225890G	E06J22 56-	P000225110E
E06H22 56-	P000225890G	E06K22 56-	P000225110E
(Meters with 1 inch boss with pressure measuring point without valve close on battery removal facility)		(Meters with 1 inch boss with pressure measuring point with valve close on battery removal facility)	
Meter Variant	Bill Of Materials No		
E06125 56-	P000280980A		
E06325 56-	P000280980A		
E06625 56-	P000280980A		
E06725 56-	P000280980A		
E06B25 56-	P000280980A		
E06C25 56-	P000280980A		
E06G25 56-	P000280980A		
E06H25 56-	P000280980A		
(Meters with 1 inch boss without pressure measuring point without valve close on battery removal facility)			
Meter Location :	Indoor, or in suitable enclosure	Sealing Type Location :	Plastic laser etched seal : 1 x Front of meter
Integrity of Meter :	Inaccessible without breaking seals	Temperature Range :	-10°C to +40°C : -25°C to +40°C
		Base Temperature :	0°C, 15°C and 20°C
Range of Gases :	Second Family	Maximum Operating Pressure :	75 mbar : 200 mbar
Flow Range :	Qmax 6.0m ³ /h Qmin 0.040m ³ /h	Orientation :	Connection ports vertical

Artwork of front of meter

Meter E06122 56 without temperature compensation, valve close on battery removal, fast valve closure or increment prevention.



Meter E06K25 56 with temperature compensation ($t_b=15^{\circ}\text{C}$), valve close on battery removal, fast valve closure and increment prevention showing extended ambient temperature range of -25°C to 40°C . The meter is also approved with the standard -10°C to 40°C range.



Please note-. The options incorporated within a meter can be readily identified externally by their laser etched model numbers which take the form E06*2* 56, please see the product variant identification details on page 7

Photograph of Meter (External View)



E06122 56 Meter



E06K25 56 Meter

Photograph of Meter without Module Fitted



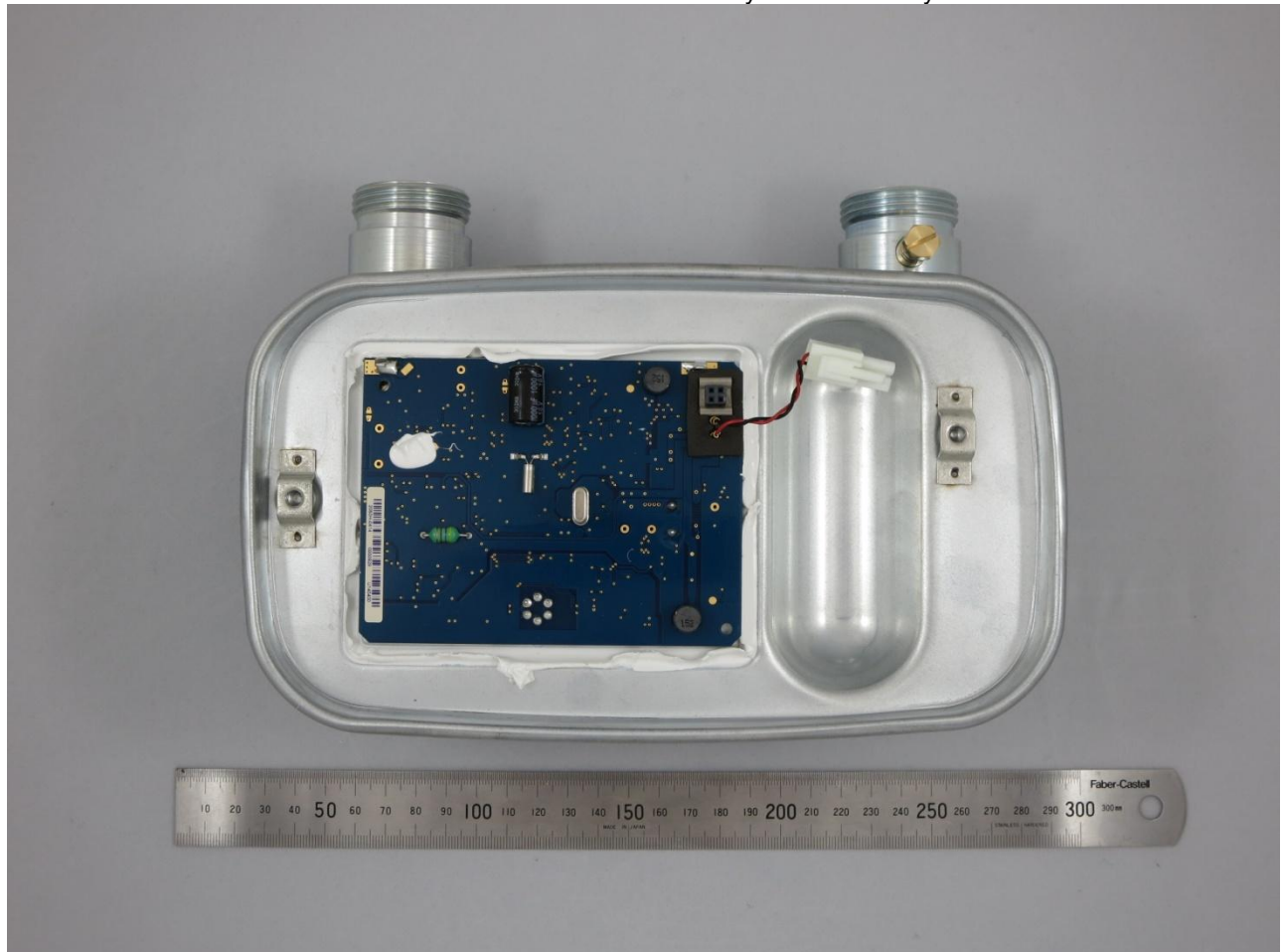
E06122 56 Meter



E06K25 56 Meter

Photographs of Meters Showing PCB

Meter without valve close on battery removal facility



Meter with valve close on battery removal facility (characterised by button cell)





UK/ 0120/ SGS0087
10th June 2014
Issue 4

Product Variant Identification Details:

Meter type

E Ultrasonic gas meter

Maximum flow rate Q_{\max}

06 6 m³/h

Functionality

- 1 With valve, no temperature compensation, no valve close on battery removal facility, no fast valve close, no increment prevention
- 3 With valve, with temperature compensation, no valve close on battery removal facility, no fast valve close, no increment prevention
- 4 With valve, no temperature compensation, with valve close on battery removal facility, no fast valve close, no increment prevention
- 5 With valve, with temperature compensation, with valve close on battery removal facility, no fast valve close, no increment prevention
- 6 With valve, no temperature compensation, no valve close on battery removal facility, with fast valve close, no increment prevention
- 7 With valve, with temperature compensation, no valve close on battery removal facility, with fast valve close, no increment prevention
- 8 With valve, no temperature compensation, with valve close on battery removal facility, with fast valve close, no increment prevention
- 9 With valve, with temperature compensation, with valve close on battery removal facility, with fast valve close, no increment prevention
- B With valve, no temperature compensation, no valve close on battery removal facility, no fast valve close, with increment prevention
- C With valve, with temperature compensation, no valve close on battery removal facility, no fast valve close, with increment prevention
- E With valve, no temperature compensation, with valve close on battery removal facility, no fast valve close, with increment prevention
- F With valve, with temperature compensation, with valve close on battery removal facility, no fast valve close, with increment prevention
- G With valve, no temperature compensation, no valve close on battery removal facility, with fast valve close, with increment prevention
- H With valve, with temperature compensation, no valve close on battery removal facility, with fast valve close, with increment prevention
- J With valve, no temperature compensation, with valve close on battery removal facility, with fast valve close, with increment prevention
- K With valve, with temperature compensation, with valve close on battery removal facility, with fast valve close, with increment prevention

Boss spacing

2 152mm

Boss type

- 2 1 inch boss to BS 746
- 5 1 inch boss to BS 746, no pressure measuring point

Space

Generation (Model Number)

- 56 Adaptive+ enclosure, Two Part measuring tube, ASIC less, Software V01.23



UK/ 0120/ SGS0087
10th June 2014
Issue 4

Modifications to the meters described according to approval No.UK/ 0120/ SGS0087 must be notified to the issuing body to confirm the meter's continuing compliance to the relevant pattern approval standard(s). All modifications to the meter module relating to the meter index, the module case cover, buttons, window and sealing arrangement must also be agreed with the issuing body before being implemented.

Document Revision History

Issue	Date	Comments
1	05/08/2011	Initial Issue
2	30/08/2011	Report reference amended
3	09/06/2014	Increment prevention option added
4	10/06/2014	Increase Maximum Operating Pressure to 200mbar, option to remove pressure measuring point and addition of variants' with temperature compensation and fast valve close capability