

EC Type Examination Certificate Number: **UK/ 0120/ SGS0072**

Sensus Metering Systems Ltd

No. 9 Ganluyuan Shillpu,
Chaoyang District,
Beijing,
China 100025

Instrument Identification:

CubixRS 1.2L G1.6 credit diaphragm gas meter

Instrument Traceable Number
UK/ 0120/ SGS0072

EC Directive 2004/22/EC

on Measuring Instruments Annex B

It is certified that the manufacturer's technical design and specimen for the above instrument has been examined and, based on the evidence submitted, it is considered that the instrument conforms to the requirements of MI-002 of EC Directive 2004/22/EC.

This certificate is to be used in conjunction with a certificate covering the product verification as required in Annex D or Annex F

This certificate is valid for 10 years from 7th December 2010 until 6th December 2020

Issue 2

Certification is based on report number(s) MID-B-135320-G1.6-Rb dated 7th December 2010

Notified Body Number 0120

Authorised Signature
Mr J Weaver



CE
0120

Notified Body
SGS United Kingdom Ltd, 202B Worle Parkway, Weston-super-Mare, BS22 6WA UK
t +44 (0)1934 522917 f +44 (0)1934 522137 www.sgs.com
Contact Address
SGS United Kingdom Ltd, Unit 10, South Industrial Estate, Bowburn, Durham, DH6 5AD UK
t +44 (0)191 377 2000 f +44 (0)191 377 2020 www.sgs.com

EC Type Examination Cert.

Approval Annex for EC Type Examination Cert. No. UK/ 0120/ SGS0072

Manufacturer	:	Sensus Metering Systems Ltd.
Type of Meter(s)	:	CubixRS 1.2L G1.6 credit diaphragm gas meter
Description of Meter	:	G1.6 diaphragm gas meter.
Accuracy Class (es)	:	1.5
Cyclic volume	:	1.2dm ³
Case material	:	Steel
Meter Location	:	Indoor, or in suitable enclosure.
Integrity of Meter	:	Inaccessible without breaking seal.
Range of Gases	:	First, second and third families
Flow Range	:	Qmax 2.5m ³ /h Qmin 0.016m ³ /h
		Software Version No : Not Applicable.
		Bill Of Materials No : 130mm 2217130162 Iss. 1 : 110mm 2217130161 Iss. 1
		Sealing Type : Embossed plastic seal. Location : Fitted to top of index cover
		Temperature Range : -25°C to +55°C
		Maximum Operating Pressure: Up to 500mbar i.e. 75mbar, 100mbar, 200mbar, 300mbar, 400mbar, or 500mbar.
		Orientation : Connection ports vertical

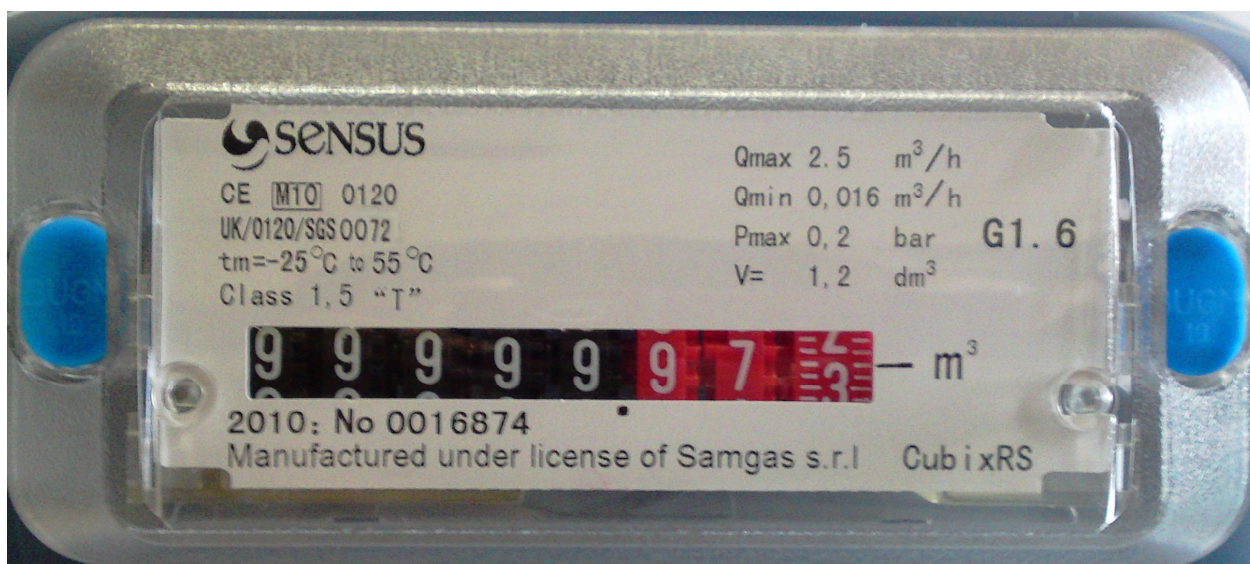
Photograph Showing Complete G1.6 1.2dm³ Meter with 130mm Boss Spacing



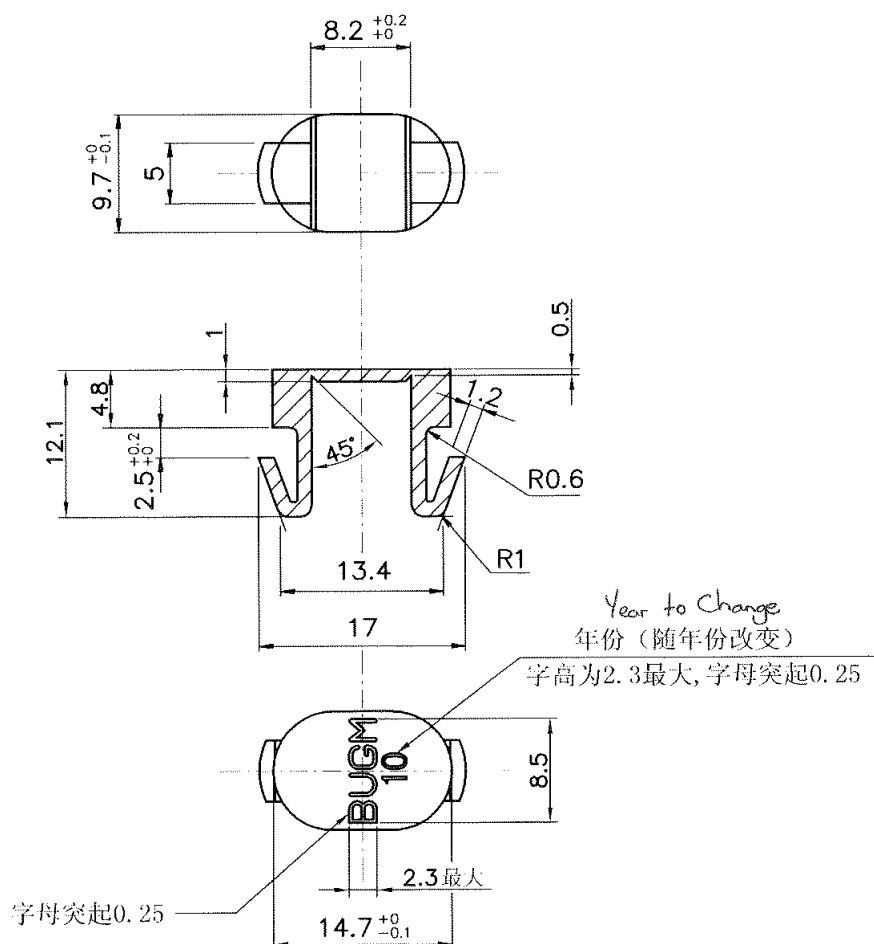
Photograph Showing Complete G1.6 1.2dm³ Meter with 110mm Boss Spacing



Meter Index
(Showing blue security seal locations)



Sensus Seal Detail



The Sensus seal marking and date will be heat embossed on the Index seal, which is detailed in drawing 120070721-1 issue 02, after the meter has been certified.

Approved Product Variations:

Boss variants for the G1.6 CubixRS 1.2L Meter

Product Code	Description	3/4" BS 746	1" BS 746	M30 x 2 China Domestic Market
2217130161	110 ctr G1.6	√	√	√
2217130162	130 ctr G1.6	√	√	√

Modifications to the meters described according to approval No. UK/ 0120/ SGS0072 must be notified to the issuing body before, being implemented, to confirm the meter's continuing compliance to the relevant pattern approval standard(s).