

EC Type Examination Certificate Number: **UK/ 0120/ SGS0061**

Itron Metering Solutions UK Ltd

PO Box No.3,
Talbot Road,
Stretford,
Manchester
M32 0XX

Instrument Identification:

U6s/U6v

G4 credit/prepayment diaphragm gas meter

Instrument Traceable Number

UK/ 0120/ SGS0061

EC Directive 2004/22/EC

on Measuring Instruments Annex B

It is certified that the manufacturer's technical design and specimen for the above instrument has been examined and, based on the evidence submitted, it is considered that the instrument conforms to the requirements of MI-002 of EC Directive 2004/22/EC.

This certificate is to be used in conjunction with a certificate covering the product verification as required in Annex D or Annex F

This certificate is valid for 10 years from 15th December 2010 until 14th December 2020

Issue 1

Certification is based on report number(s) MID-B-138426Ra dated 15th December 2010

Notified Body Number 0120

Authorised Signature

Mr J Weaver

A handwritten signature in black ink, appearing to be 'J Weaver', written over a light blue horizontal line.

CE
0120

Notified Body

SGS United Kingdom Ltd, 202B Worle Parkway, Weston-super-Mare, BS22 6WA UK

t +44 (0)1934 522917 f +44 (0)1934 522137 www.sgs.com

Contact Address

SGS United Kingdom Ltd, Unit 10, South Industrial Estate, Bowburn, Durham, DH6 5AD UK

t +44 (0)191 377 2000 f +44 (0)191 377 2020 www.sgs.com

EC Type Examination Cert.

Page 1 of 5

MID-B06E Rev 2

Approval Annex for EC Type Examination Cert. No. UK/ 0120/ SGS0061

Manufacturer : Itron Metering Solutions UK Ltd.	
Type of Meter(s) : U6s/U6v	
Description of Meter : G4 diaphragm gas meter.	
Accuracy Class (es) : 1.5	Software Version No : Not Applicable.
Cyclic volume : 2dm ³	U6s/U6v Bill Of Materials No : DD-019-0A
Meter Location : Indoor, or in suitable enclosure.	Sealing Type : Embossed plastic seal. Location : Fitted to top of index cover
Integrity of Meter : Inaccessible without breaking seal.	Temperature Range : -10°C to +40°C
Range of Gases : Second Family Group-IIA	Maximum Operating Pressure : 75 mbar
Flow Range : Qmax 6.0m ³ /h Qmin 0.040m ³ /h	Orientation : Connection ports vertical

The U6s/U6v meter, which contains an internal valve, is supplied by Itron Metering Solutions in two forms:

1. As a Talexus Prepayment Meter

The Talexus prepayment meter is a U6s/U6v meter fitted with a Talexus prepayment CU (Customer Unit) part number A109806 issue A. The customer adds credit to the meter via an electronic key interface on the front of the CU. The prepayment customer unit records the volume of gas consumed via an integral reed switch which is activated by the magnet in the least significant drum of the index. The mechanically driven valve contained within the U6s/U6v is operated by the customer unit dependent on the credit remaining. For safety reasons the valve can only be opened under the control of the consumer.

2. a Valve Fitted Meter

The Valve Fitted Meter is a U6s/U6v meter, fitted with a Valve Drive cover. Currently there are no modules, devices or sub assemblies that are approved to be fitted to this meter.

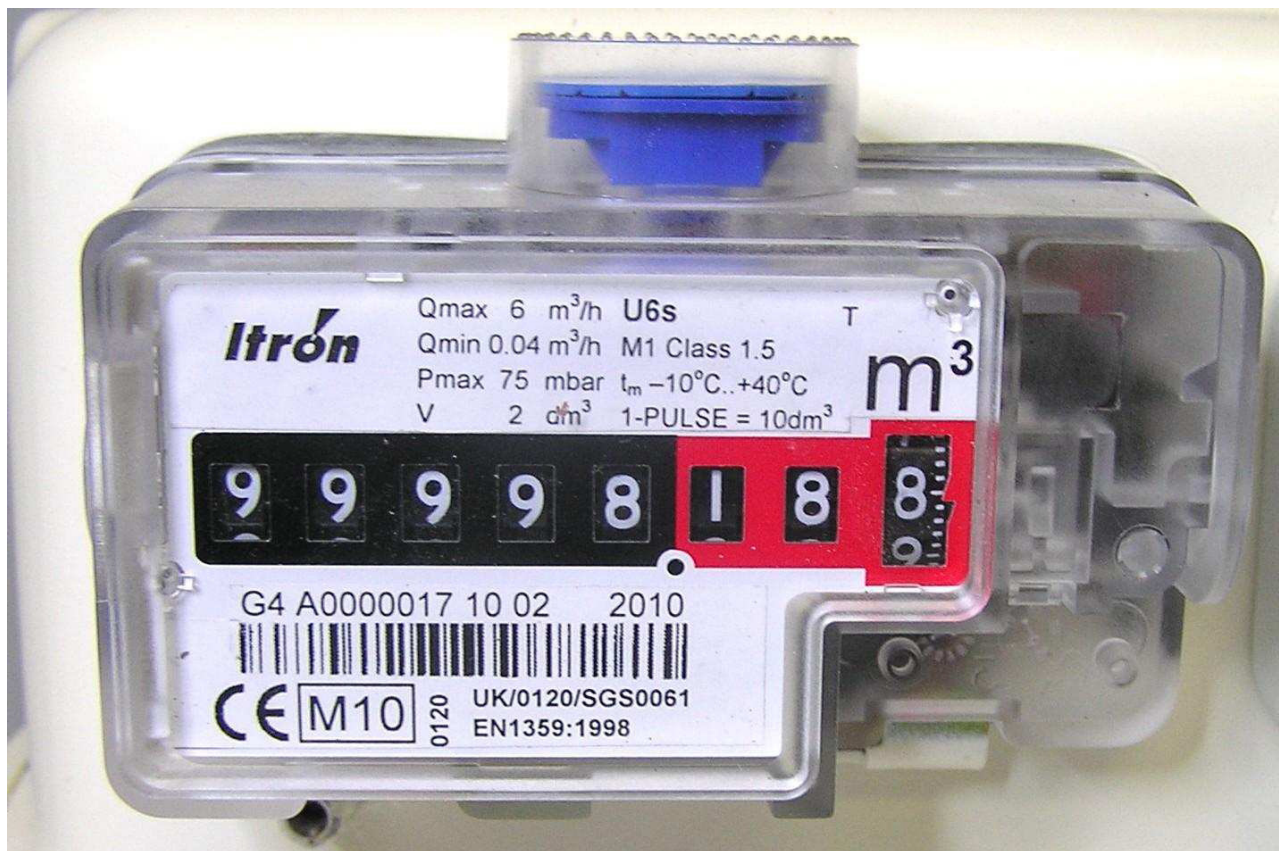
U6s/U6v 2dm³ Valve Fitted Meter



U6s/U6v 2dm³ Meter fitted with a Talexus Prepayment CU

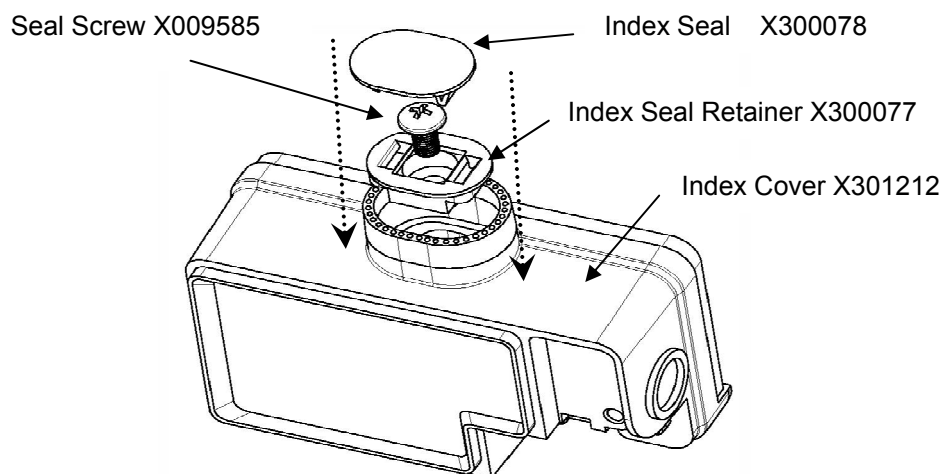


Meter Index



Meter Index showing blue security seal location.

Detail of Seal Location



Itron Seal Detail



The Itron seal symbol and date will be heat embossed on the Index seal X300078 after the meter has been certified.

Approved Product Variations:

1. There are no approved variations to the Talexus Prepayment Meter or the Valve Fitted Meter. Currently there are no modules, devices or sub assemblies that are approved to be fitted to either meter. It should also be noted that the Valve Fitted Meter cannot be converted to a Talexus Prepayment Meter retrospectively.

Modifications to the meters described according to approval No.**UK/ 0120/ SGS0061** must be notified to the issuing body to confirm the meter's continuing compliance to the relevant pattern approval standard(s). Modifications to the Talexus prepayment CU (Customer Unit) relating to the readability of the meter index and the applied load on the index, must also be agreed with the issuing body before being implemented.