

EC Type Examination Certificate Number: **UK/ 0120/ SGS0053**

Landis+Gyr Ltd

Orion Business Park
Bird Hall Lane
Stockport
SK3 0RT

Instrument Identification:

E06*22 55

E6 gas meter with internal cut-off valve

Instrument Traceable Number

UK/ 0120/ SGS0053

EC Directive 2004/22/EC

on Measuring Instruments Annex B

It is certified that the manufacturer's technical design and specimen for the above instrument has been examined and, based on the evidence submitted, it is considered that the instrument conforms to the requirements of MI-002 of EC Directive 2004/22/EC.

This certificate is to be used in conjunction with a certificate covering the product verification as required in Annex D or Annex F

This certificate is valid for 10 years from 17th December 2009 until 16th December 2019

Issue 2

Certification is based on report number(s) **UK/0120/SGS0053Rb** dated 8th September 2011

Notified Body Number 0120

Authorised Signature

Mr J Weaver



CE
0120

Notified Body

SGS United Kingdom Ltd, 202B Worle Parkway, Weston-super-Mare, BS22 6WA UK

t +44 (0)1934 522917 f +44 (0)1934 522137 www.sgs.com

Contact Address

SGS United Kingdom Ltd, Unit 10, South Industrial Estate, Bowburn, Durham, DH6 5AD UK

t +44 (0)191 377 2000 f +44 (0)191 377 2020 www.sgs.com

EC Type Examination Cert.

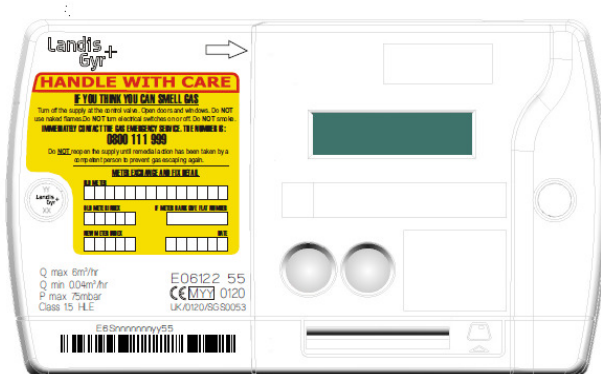
Page 1 of 4

MID-B06E Rev 2

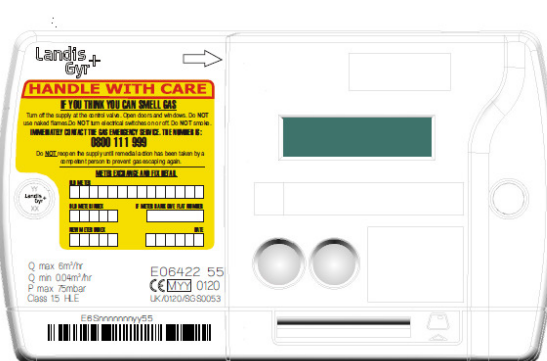
Approval Annex for EC Type Examination Cert. No. UK/ 0120/ SGS0053

Manufacturer :		Landis+Gyr Ltd	
Type of Meter(s) :		E06*22 55	
Description of Meter :		E6 gas meter with internal cut-off valve	
Accuracy Class (es) :		1.5	Software Version No : V1.01
Firmware Version No :		ASIC 3	E06122 55 Bill Of Materials No : P000188700 E06422 55 Bill Of Materials No : P000188660
Meter Location :		Indoor, or in enclosure suitable	Sealing Type : Plastic laser etched seal Location : 1 x Front of meter
Integrity of Meter :		Inaccessible without breaking seals	Temperature Range : -10°C to +40°C
Range of Gases :		Second Family	Maximum Operating Pressure : 75 mbar
Flow Range :		Qmax 6.0m ³ /h Qmin 0.040m ³ /h	Orientation : Connection ports vertical

Artwork of Front of Meters



E06122 55 Meter



E06422 55 Meter

Photographs of Complete Meters



E06122 55 Meter



E06422 55 Meter

Photograph of Meters without Modules Fitted

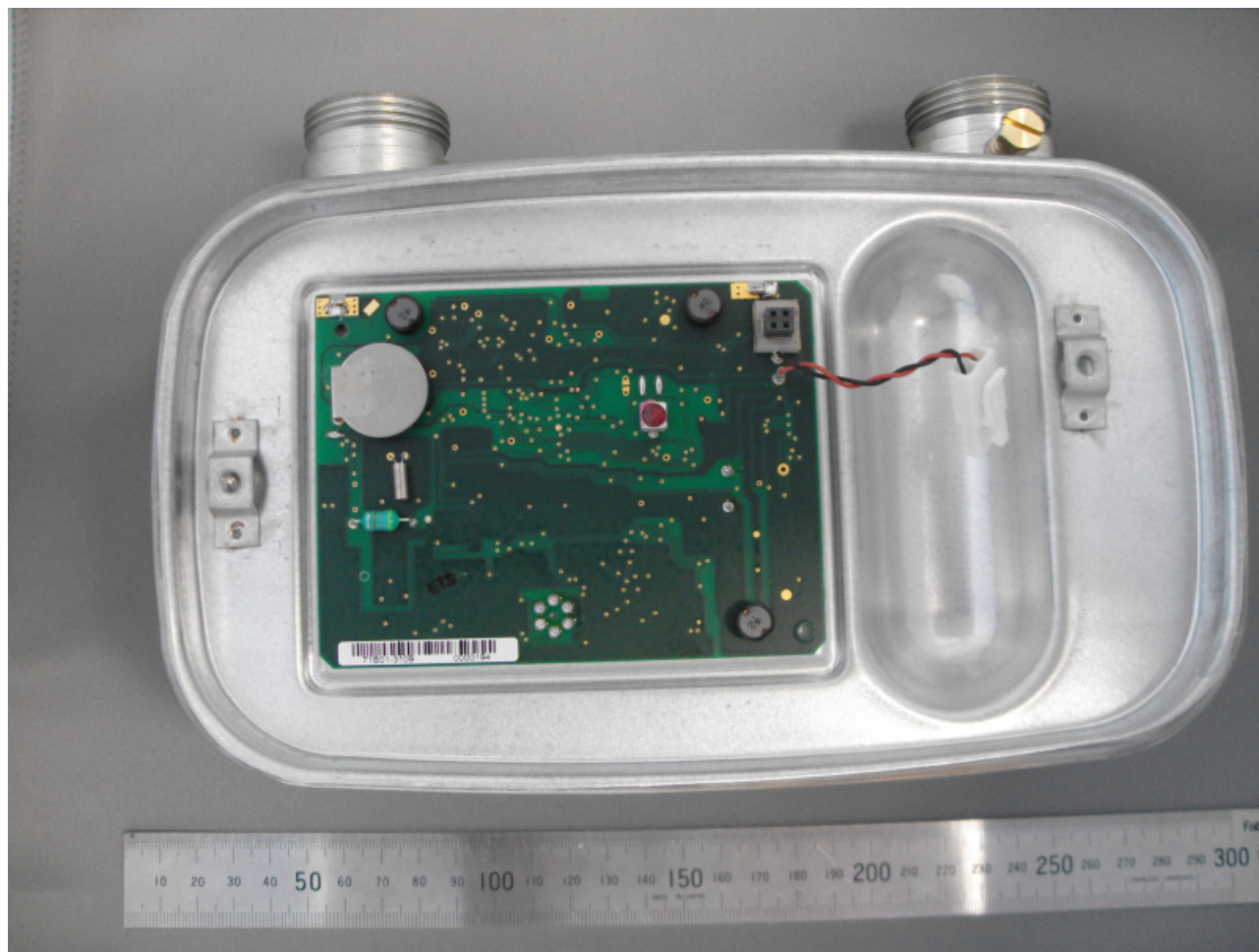


E06122 55 Meter



E06422 55 Meter

Photograph of the E06422 55 Meter Showing PCB



The E06422 55 meter ,which is shown above and has the valve close on battery disconnect facility, is characterised by the coin cell fitted to the upper left side of the PCB. The E06122 55 meter is supplied without the coin cell fitted.



Product Variant Identification Details:

Meter type	
E	Ultrasonic gas meter
Maximum flow rate Q_{max}	
06	6 m ³ /h
Functionality	
1	Including shutoff valve, no temperature compensation, no valve close on battery removal facility
4	Including shutoff valve, no temperature compensation, with valve close on battery removal facility
Boss spacing	
2	152mm
Boss Type	
2	1 inch boss to BS 746
Space	
Generation (Model Number)	
55	Two Part measuring tube, New micro and software version V1.01

Modifications to the meters described according to approval No.**UK/ 0120/ SGS0053** must be notified to the issuing body to confirm the meter's continuing compliance to the relevant pattern approval standard(s). All modifications to the module relating to the Meter Index (in particular the module case cover, buttons, window and sealing arrangement), fitted to the meter, must also be agreed with the issuing body before being implemented.