

EC Type Examination Certificate Number: **UK/ 0120/ SGS0050**

Landis + Gyr Ltd

Orion Business Park
Bird Hall Lane
Stockport
SK3 0RT

Instrument Identification:

E0634* 54

E6 Temperature compensated gas meter with internal cut-off valve

Instrument Traceable Number

UK/ 0120/ SGS0050

EC Directive 2004/22/EC

on Measuring Instruments Annex B

It is certified that the manufacturer's technical design and specimen for the above instrument has been examined and, based on the evidence submitted, it is considered that the instrument conforms to the requirements of MI-002 of EC Directive 2004/22/EC.

This certificate is to be used in conjunction with a certificate covering the product verification as required in Annex D or Annex F

This certificate is valid for 10 years from 24th January 2011 until 23rd January 2021

Issue 2

Certification is based on report number(s) MIB-B-140683Rb dated 17th February 2011

Notified Body Number 0120

Authorised Signature

Mr J Weaver



CE
0120

Notified Body

SGS United Kingdom Ltd, 202B Worle Parkway, Weston-super-Mare, BS22 6WA UK

t +44 (0)1934 522917 f +44 (0)1934 522137 www.sgs.com

Contact Address

SGS United Kingdom Ltd, Unit 10, South Industrial Estate, Bowburn, Durham, DH6 5AD UK

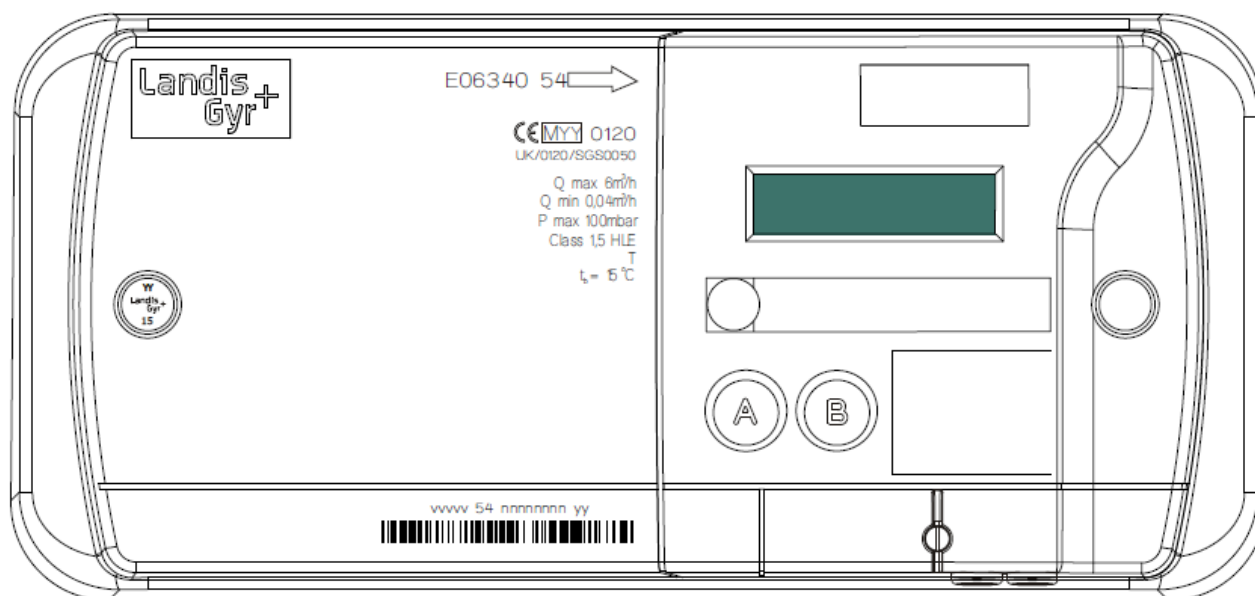
t +44 (0)191 377 2000 f +44 (0)191 377 2020 www.sgs.com

EC Type Examination Cert.

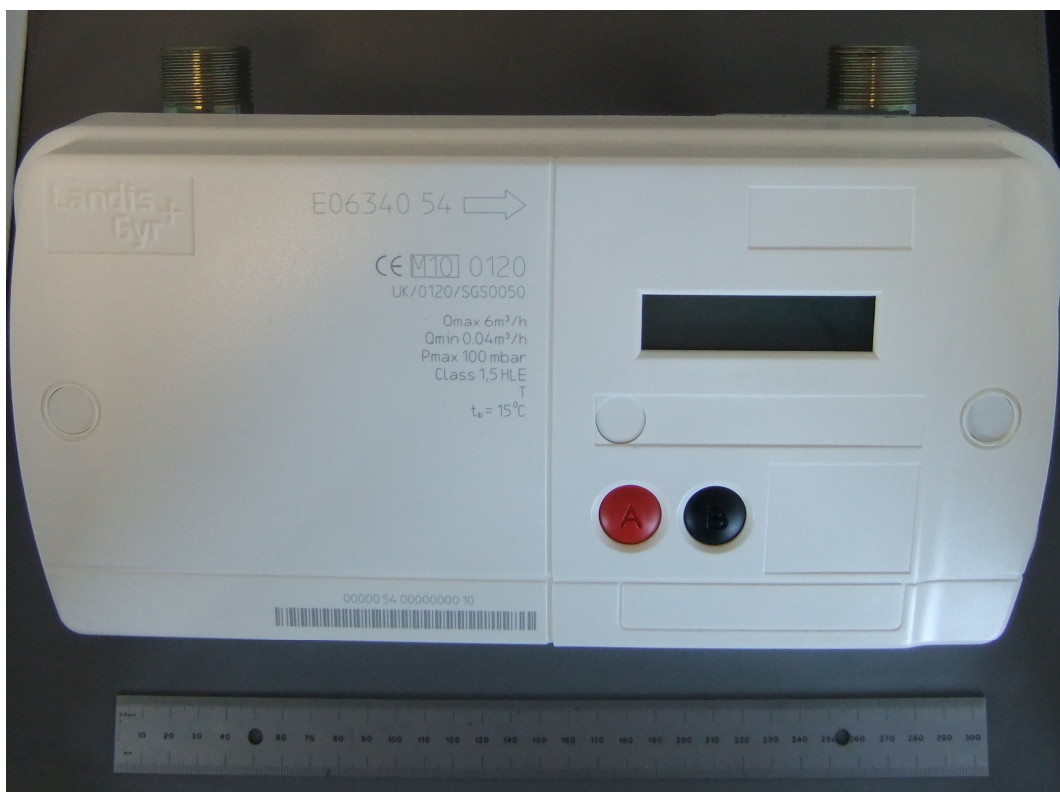
Approval Annex for EC Type Examination Cert. No. UK/ 0120/ SGS0050

Manufacturer :		Landis + Gyr Ltd	
Type of Meter(s) :		E0634* 54	
Description of Meter :		Temperature compensated E6 gas meter with internal cut-off valve	
Accuracy Class (es) :		1.5	Software Version No : V17.00
Firmware Version No :		ASIC 3	Bill Of Materials No : P000179340
Meter Location : suitable		Indoor, or in enclosure	Sealing Type : Plastic laser etched seal Location : 1 x Front of meter
Integrity of Meter :		Inaccessible without breaking seals	Temperature Range : -10°C to +40°C Base Temperature : 15 °C
Range of Gases :		Second Family	Maximum Operating Pressure : 100 mbar
Flow Range :		Qmax 6.0m³/h Qmin 0.040m³/h	Orientation : Connection ports vertical

Artwork of front of meter



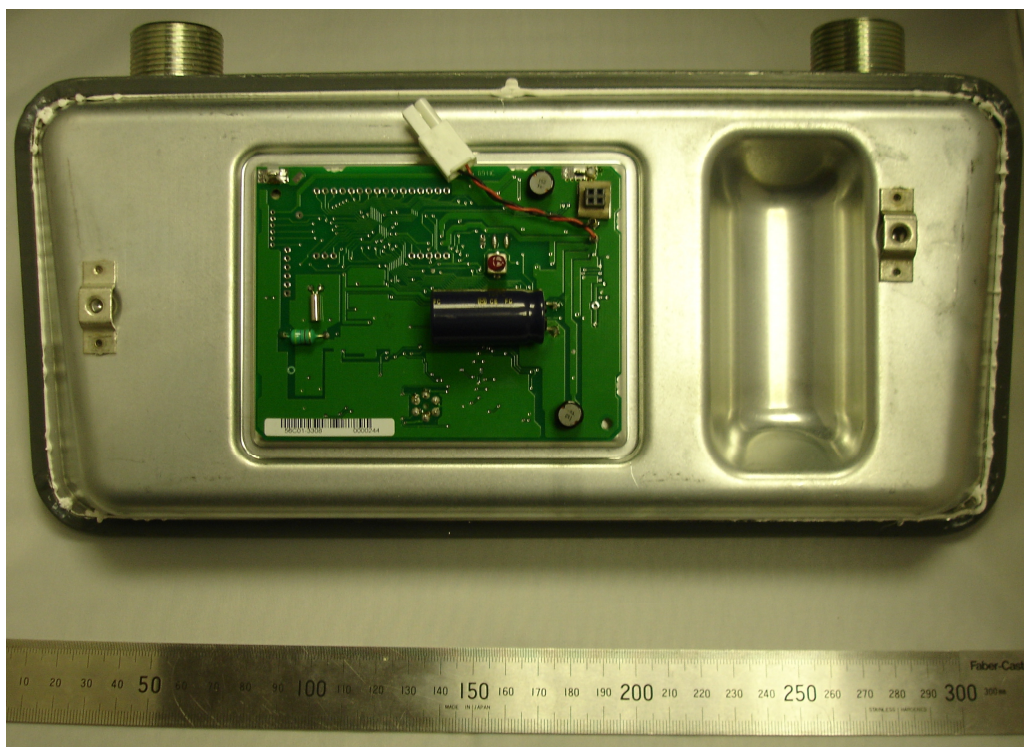
Photograph of Meter External View



Photograph of Meter without Module Fitted



Photograph of Meter Showing PCB





UK/ 0120/ SGS0050
17th February 2011
Issue 2

Product Variant Identification Details:

Meter type

E Ultrasonic gas meter

Maximum flow rate Q_{max}

06 6 m³/h

Functionality

3 Including shutoff valve, with temperature compensation, no valve close on battery removal facility

Boss spacing

4 220mm

Boss type

- 0 ¾ inch boss to NEN 3084
- 1 ¾ inch boss to ISO 228-1 class B
- 2 1 inch boss to BS 746
- 3 G1¼ ISO 228-1 Class B

Space

Generation (Model Number)

54 Two Part measuring tube, Software V17.00

Modifications to the meters described according to approval No. **UK/ 0120/ SGS0050** must be notified to the issuing body to confirm the meter's continuing compliance to the relevant pattern approval standard(s). All modifications to the module relating to the Meter Index (in particular the module case cover, buttons, window and sealing arrangement), fitted to the meter, must also be agreed with the issuing body before being implemented.