

EC Type Examination Certificate Number: **UK/ 0120/ SGS0030**

## **Landis + Gyr Ltd**

Orion Business Park  
Bird Hall Lane  
Stockport  
SK3 0RT

Instrument Identification:

**E0614\* 54**

**E6 gas meter with internal cut-off valve**

Instrument Traceable Number

**UK/ 0120/ SGS0030**

## **EC Directive 2004/22/EC**

**on Measuring Instruments Annex B**

It is certified that the manufacturer's technical design and specimen for the above instrument has been examined and, based on the evidence submitted, it is considered that the instrument conforms to the requirements of MI-002 of EC Directive 2004/22/EC.

This certificate is to be used in conjunction with a certificate covering the product verification as required in Annex D or Annex F

This certificate is valid for 10 years from 6<sup>th</sup> November 2008 until 5<sup>th</sup> November 2018

Issue 1

Certification is based on report number(s) **MIB-B-115410/120106** dated 4<sup>th</sup> November 2008

Notified Body Number 0120

Authorised Signature

**Mr J Weaver**



**CE**  
**0120**

Notified Body

SGS United Kingdom Ltd, 202B Worle Parkway, Weston-super-Mare, BS22 6WA UK

t +44 (0)1934 522917 f +44 (0)1934 522137 [www.sgs.com](http://www.sgs.com)

Contact Address

SGS United Kingdom Ltd, Unit 10, South Industrial Estate, Bowburn, Durham, DH6 5AD UK

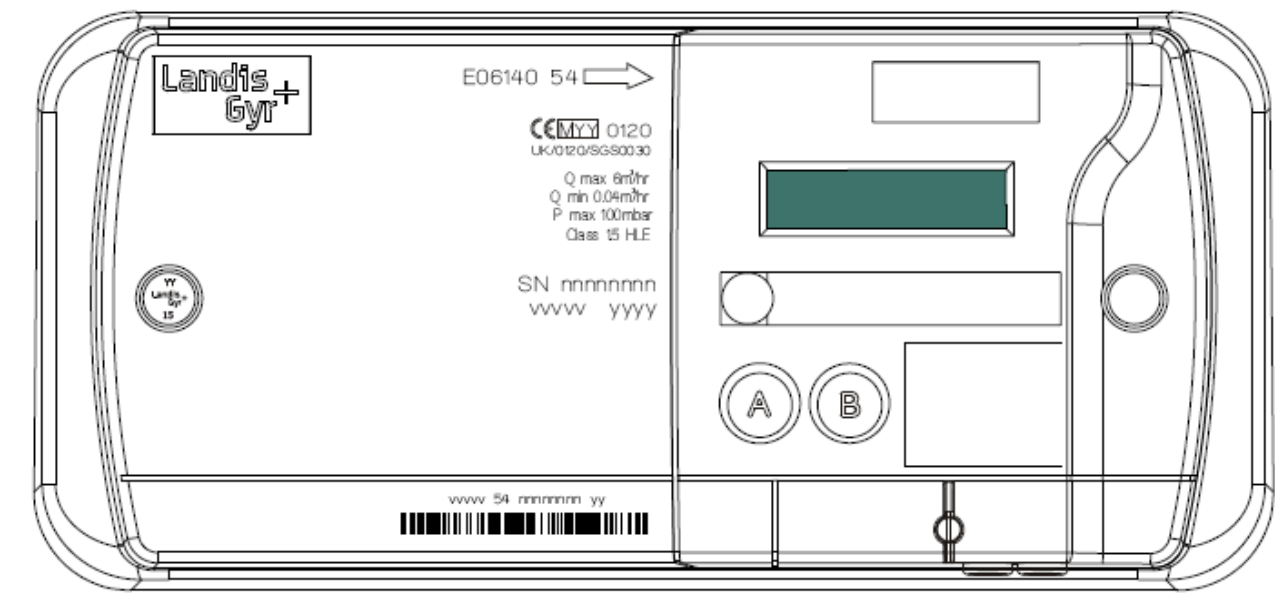
t +44 (0)191 377 2000 f +44 (0)191 377 2020 [www.sgs.com](http://www.sgs.com)

EC Type Examination Cert.

## Approval Annex for EC Type Examination Cert. No. UK/ 0120/ SGS0030

<b>Manufacturer</b>	:	Landis + Gyr Ltd	
<b>Type of Meter(s)</b>	:	E0614* 54	
<b>Description of Meter</b>	:	E6 gas meter with internal cut-off valve	
<b>Accuracy Class (es)</b>	:	1.5	<b>Software Version No</b> : V17.00
<b>Firmware Version No</b>	:	ASIC 3	<b>Bill Of Materials No</b> : 7466201360
<b>Meter Location</b>	:	Indoor, or in suitable enclosure	<b>Sealing Type</b> : Plastic laser etched seal <b>Location</b> : 1 x Front of meter
<b>Integrity of Meter</b>	:	Inaccessible without breaking seals	<b>Temperature Range</b> : -10°C to +40°C
<b>Range of Gases</b>	:	Second Family	<b>Maximum Operating Pressure</b> : 100 mbar
<b>Flow Range</b>	:	Qmax 6.0m <sup>3</sup> /h Qmin 0.040m <sup>3</sup> /h	<b>Orientation</b> : Connection ports vertical

**Artwork of front of meter**



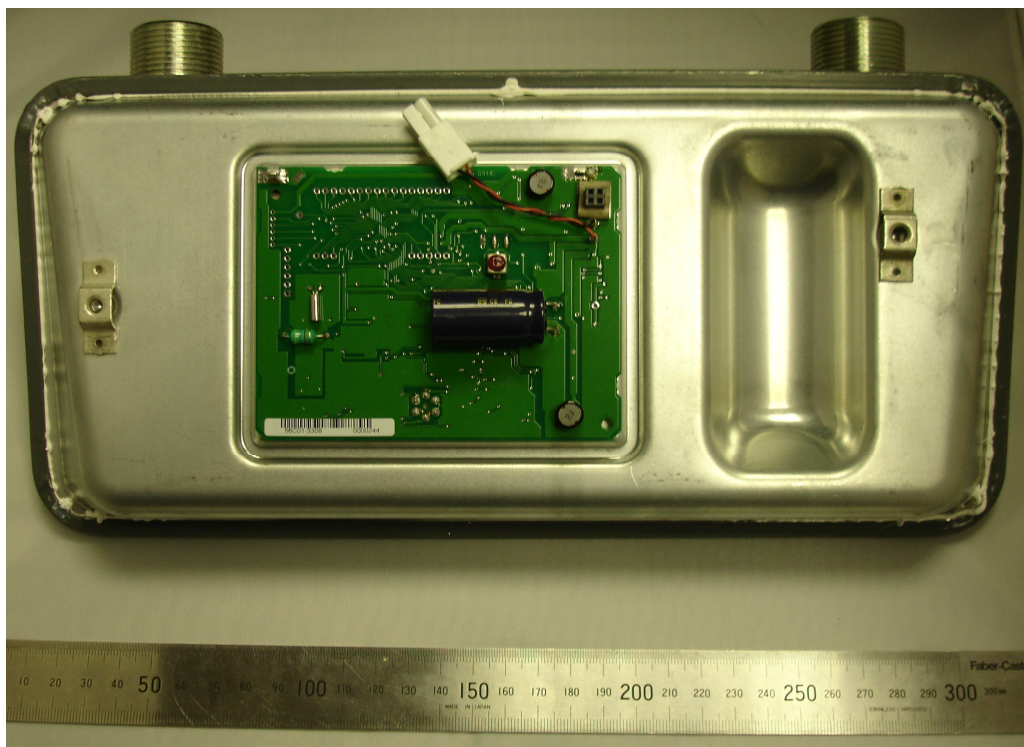
**Photograph of Meter External View**



**Photograph of Meter without Module Fitted**



**Photograph of Meter Showing PCB**





UK/ 0120/ SGS0030  
6<sup>th</sup> November 2008  
Issue 1

Product Variant Identification Details:

<b>Meter type</b>	
E	Ultrasonic gas meter
<b>Maximum flow rate <math>Q_{\max}</math></b>	
06	6 m <sup>3</sup> /h
<b>Functionality</b>	
1	Including shutoff valve, no temperature compensation
<b>Boss spacing</b>	
4	220mm
<b>Boss Type</b>	
0	¾ inch boss to NEN 3084
1	¾ inch boss to ISO 228-1 class B
2	1 inch boss to BS 746
3	G1¼ ISO 228-1 class B
<b>Space</b>	
<b>Generation (Model Number)</b>	
54	Two Part measuring tube and software version V17.00

Modifications to the meters described according to approval No. **UK/ 0120/ SGS0030** must be notified to the issuing body to confirm the meter's continuing compliance to the relevant pattern approval standard(s). All modifications to the module relating to the Meter Index (in particular the module case cover, buttons, window and sealing arrangement), fitted to the meter, must also be agreed with the issuing body before being implemented.