



Department for Levelling Up, Housing & Communities

Planning applications in England:

Factsheet

April to June 2022

Residential and commercial applications granted (major and minor):

Residential
8,700 - 9% from 2021 Q2

Commercial
1,800 - 5% from 2021 Q2

Householder developments:

Decided
58,000 - 16% from 2021 Q2

As a proportion of all applications decided
58% - 4 pp from 2021 Q2

Permitted development rights (PDRs):

Number of applications:

Prior approval not required
4,200 - 28% from 2021 Q2

Granted
1,600 - 26% from 2021 Q2

Refused
1,600 - 29% from 2021 Q2

County matter applications

Decided
181 + 7% from 2021 Q2

Granted
159 - 2% from 2021 Q2

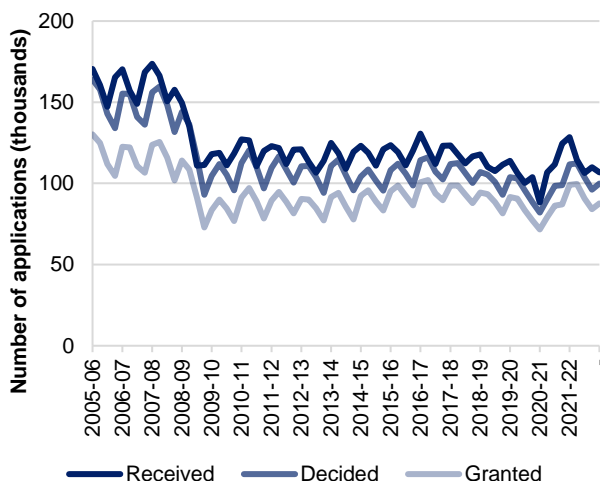
pp Percentage point

Number of applications:

Received
106,800 - 17% from 2021 Q2

Decided
99,900 - 11% from 2021 Q2

Granted
87,600 - 12% from 2021 Q2



Percentage of applications:

Granted
88% - 1 pp from 2021 Q2

The percentage of applications decided in time by development type:

Major applications
86% - 1 pp from 2021 Q2

Minor applications
82% + 1 pp from 2021 Q2

Other applications
87% + 1 pp from 2021 Q2