

Wing Standard Role

1. Oils Box
2. P Strop (Total 30)
3. Crewmans Harness (Total x 3)
4. Daily Use Bag
5. Light Line
6. Long Lead (Total x 3)
7. Winching Equipment (If Hoist Fitted)
8. 5M Strop x 2
9. 3M Strop x 2
10. Master Link (Attached to 10,000lb TDR)
11. Role Box
12. Para Bag x 1
13. Ropes Bag
14. Large Covers Bag
15. Toe Ramps x 3
16. Broom
17. Ladder
18. Overload Belts x 16 (SD12)

Contents

Ropes Bag

Blade Ropes x 6

Large Covers Bag

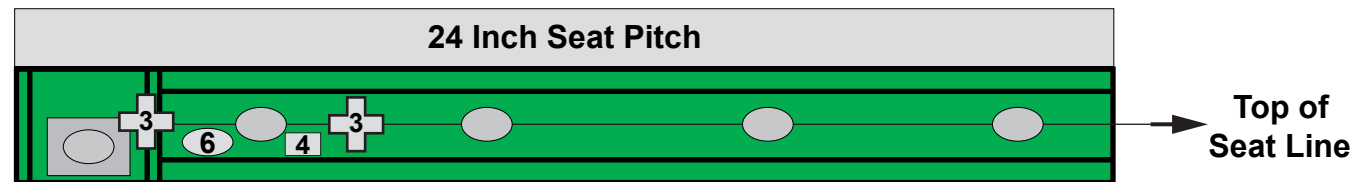
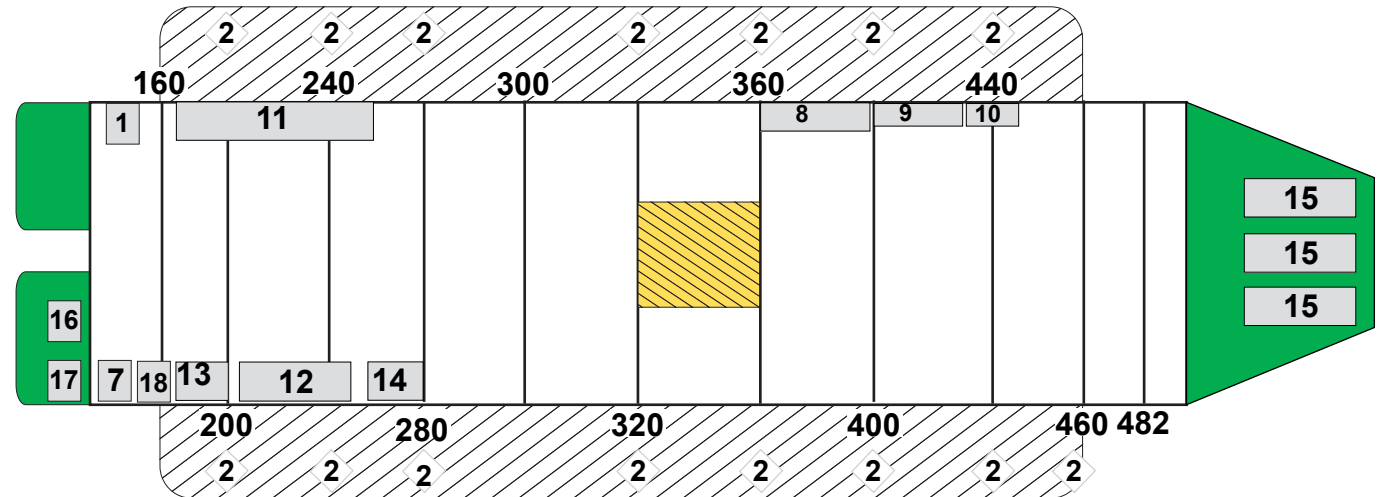
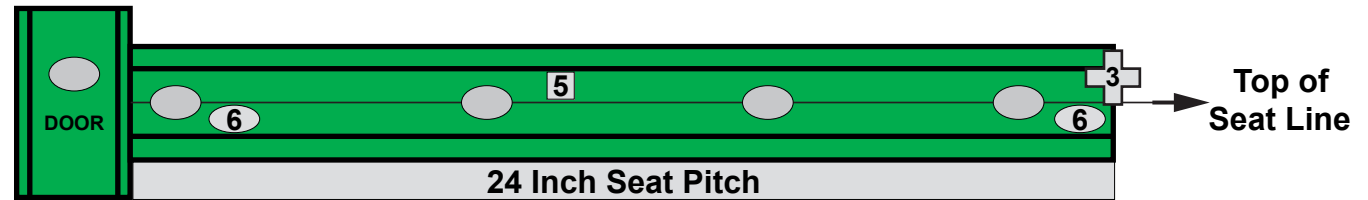
FCU Covers (1 Piece) 1 Set
 Fwd Pylon Covers x 3
 Clamshell Door Cover
 Bentley Bonnet Cover
 APU Exhaust Cover
 Heater Exhaust Cover
 Heater Intake Cover

Role Box (Secured with 4 P-Strops)

Chains 2 x 12 Ft 5000 lb + 1 x 7 Ft 5000 lb
 Ratchet Strop 10000 lb x 16
 Loadspreader x 2
 Lashing Tape x 1
 Black Tape x 1
 Large Plastic Bags x 5
 Roll Kim Wipe x 1
 Cargo Winch Accessories

Chinook Role Stowage

To be completed IAW Chinook Wing Standard Role



Oils Box

1 x Wash Bottle
 1 x Can OM15
 1 x Can OX26
 2 x Oil Filler Cans
 2 x Funnels

Para Bag

500 Kg Net x 1
 3000 lb Net x 1

Daily Use Bag

Kim Wipe x 1
 Plastic Bags x 2
 Black Tape x 1
 Earex / Sickbags

Note

Chocks x 2
 (Small type with snap hook fastener)