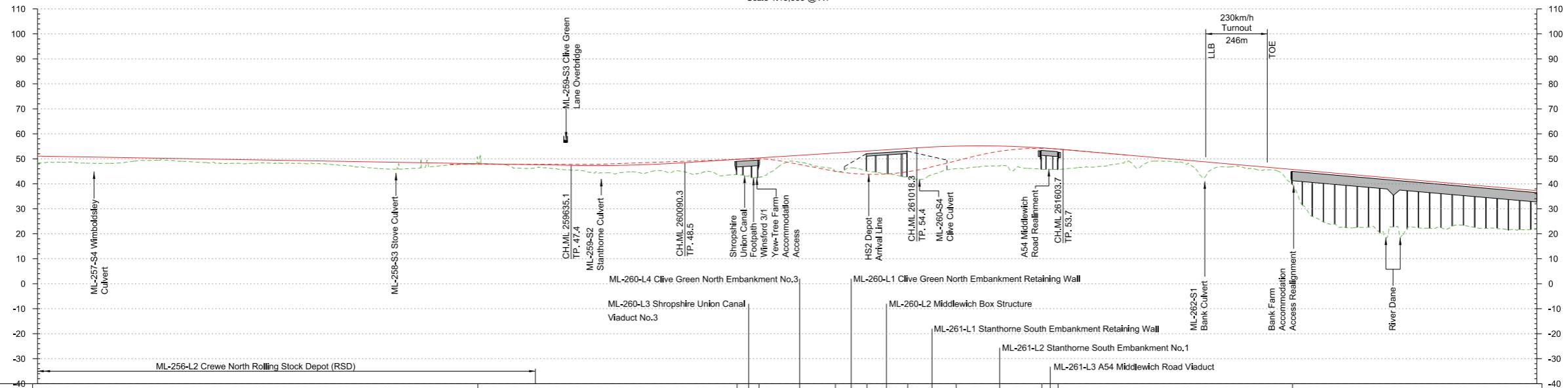


Plan

Scale 1:10,000 @ A1



Route Element ID	ML-256-L3 Walley's Green Embankment										ML-259-L2 Clive Green South Embankment No.3										ML-260-L1 Clive Green North Embankment Retaining Wall										ML-261-L1 Stanthorne North Embankment										ML-262-L1 River Dane Viaduct																																		
Chainage	ML 257+500	ML 257+600	ML 257+700	ML 257+800	ML 257+900	ML 258+000	ML 258+100	ML 258+200	ML 258+300	ML 258+400	ML 258+500	ML 258+600	ML 258+700	ML 258+800	ML 258+900	ML 259+000	ML 259+100	ML 259+200	ML 259+300	ML 259+400	ML 259+500	ML 259+600	ML 259+700	ML 259+800	ML 259+900	ML 260+000	ML 260+100	ML 260+200	ML 260+300	ML 260+400	ML 260+500	ML 260+600	ML 260+700	ML 260+800	ML 260+900	ML 261+000	ML 261+100	ML 261+200	ML 261+300	ML 261+400	ML 261+500	ML 261+600	ML 261+700	ML 261+800	ML 261+900	ML 262+000	ML 262+100	ML 262+200	ML 262+300	ML 262+400	ML 262+500	ML 262+600	ML 262+700	ML 262+800	ML 262+900	ML 263+000	ML 263+100	ML 263+200	ML 263+300	ML 263+400	ML 263+500														
Horizontal Alignment	R=9030.0 L=2116.1										L=375.1										L=5115.5										L=300.0																																												
Vertical Alignment	L=2605.0 G=-0.173%										L=455.2 R=-56000.0										L=928.0 G=0.640%										L=585.4 R=38800.0										L=2180.0 G=-0.869%																																		
Existing Level	48.3	48.6	48.2	48.2	49.2	49.5	48.9	48.6	48.3	48.3	48.4	48.2	48.1	47.5	46.7	45.9	46.2	47.1	47.8	48.0	46.6	46.5	45.7	44.8	44.3	44.7	43.6	42.9	42.8	41.7	47.4	44.8	44.8	44.0	45.5	44.5	44.7	43.6	42.9	42.2	44.3	46.0	47.1	46.1	48.1	47.8	45.3	46.0	45.9	46.7	47.7	47.7	46.1	48.1	47.8	45.3	46.0	45.9	46.7	47.7	47.1	45.4	45.4	41.6	27.0	23.2	22.5	22.5	18.5	22.7	22.5	23.4	22.1	21.7	21.8
Proposed Level	51.1	50.9	50.7	50.6	50.4	50.2	50.1	49.9	49.7	49.5	49.5	49.4	49.2	48.1	47.5	46.7	45.9	46.2	47.1	47.8	48.0	46.6	46.5	45.7	44.8	44.3	44.7	43.6	42.9	42.8	41.7	47.4	44.8	44.8	44.0	45.5	44.5	44.7	43.6	42.9	42.2	44.3	46.0	47.1	46.1	48.1	47.8	45.3	46.0	45.9	46.7	47.7	47.1	45.4	45.4	41.6	27.0	23.2	22.5	22.5	18.5	22.7	22.5	23.4	22.1	21.7	21.8								
Cut and Fill	+2.8	+2.3	+2.5	+2.4	+1.2	+0.7	+1.2	+1.3	+1.4	+1.1	+1.2	+1.1	+1.5	+2.1	+2.8	+2.3	+1.2	+0.3	0.0	+1.2	+1.1	+1.8	+2.5	+3.1	+3.0	+2.8	+4.0	+4.5	+6.2	+7.5	+2.4	+4.3	+7.6	+7.3	+8.6	+12.1	+10.5	+9.1	+8.1	+9.7	+8.5	+7.9	+6.2	+4.3	+5.1	+1.2	+1.6	+2.8	+0.6	+1.4	+4.3	+18.1	+21.0	+20.8	+24.0	+18.9	+18.2	+16.5	+16.9	+16.4	+15.5	+37.3													
Design Speed	400km/h																																																																										

Profile

Scale H:1:10,000 V:1:1000 @ A1

This document is issued for the party which commissioned it and for specific purposes connected with the captioned project only. It should not be relied upon by any other party or used for any other purpose. We accept no responsibility for the consequences of this document being relied upon by any other party, or being used for any other purpose, or containing any error or omission which is due to an error or omission in data supplied to us by other parties.

P02	AP1 Second Issue	CMC	JSA	GHU	06/12/2021	06/12/2021	06/12/2021
P01	AP1 First Issue	MW	EMO	GHU	27/08/2021	27/08/2021	27/08/2021

© Crown Copyright and database right 2021. All rights reserved. Ordnance Survey Licence number: 100049190

© Crown Copyright material is reproduced with the permission of Land Registry under delegated authority from the Controller of HMSO.

This material was last updated on 2021 and may not be copied, distributed, sold or published without the formal permission of Land Registry. Only an official copy of a title plan or register obtained from the Land Registry may be used for legal or other official purposes.

Scale with caution as distortion can occur.

Legends/Notes:

- Depot, station, headhouse, shaft or portal building
- Tunnel portal
- Railway system site
- Ecological mitigation pond
- Balancing pond
- Pumping station
- Replacement floodplain storage area
- Woodland habitat creation
- Wetland habitat creation
- Grassland habitat creation
- Landscape mitigation planting (scrub / woodland)
- Grassed areas
- Local placement
- Public realm
- Engineering earthworks
- Landscape earthworks
- Rail alignment formation
- Returned to suitable development use
- County boundary
- Borough / District boundary
- Major contour
- Community area boundary
- Existing public right of way
- New, diverted or realigned public right of way
- Public right of way closure
- Tunnels external extent
- HS2 access
- Realigned highway
- Light Rail Transit
- Rail alignment
- Chainage (e.g. 10+000)
- Watercourse diversions
- New Ditches
- Hedgerow
- Major utility works
- Noise fence barrier
- Car Park
- Existing watercourse
- Watercourse diversions
- New Ditches
- Hedgerow
- Major utility works
- Noise fence barrier
- Car Park

Registered in England
Registration No. 06791686
Registered office:
2 Snow Hill, Queensway,
Birmingham, B4 6GA

Creator/Organizer
MW JV (Mott MacDonald and WSP Joint Venture)

Zone	M2 Wide - Hough to Bamfurlong
Design Stage	Hybrid Bill - Interim Preliminary Design AP1
Drawing Title	M2 Hough to Bamfurlong Plan & Profile Sheet 3 of 6
Chainage	257+500 to 263+500

Project/Contract	2DE01 Hybrid Bill Additional Provision 1 AP1		
Discipline/Function	Civil		
Drawn	CCL	Checked	EMO
Date	27/08/2021	Scale	AS SHOWN
Drawing No.	2PT24-MWJ-CV-DPP-M002-220053		Rev.
			P02

Fit for Acceptance