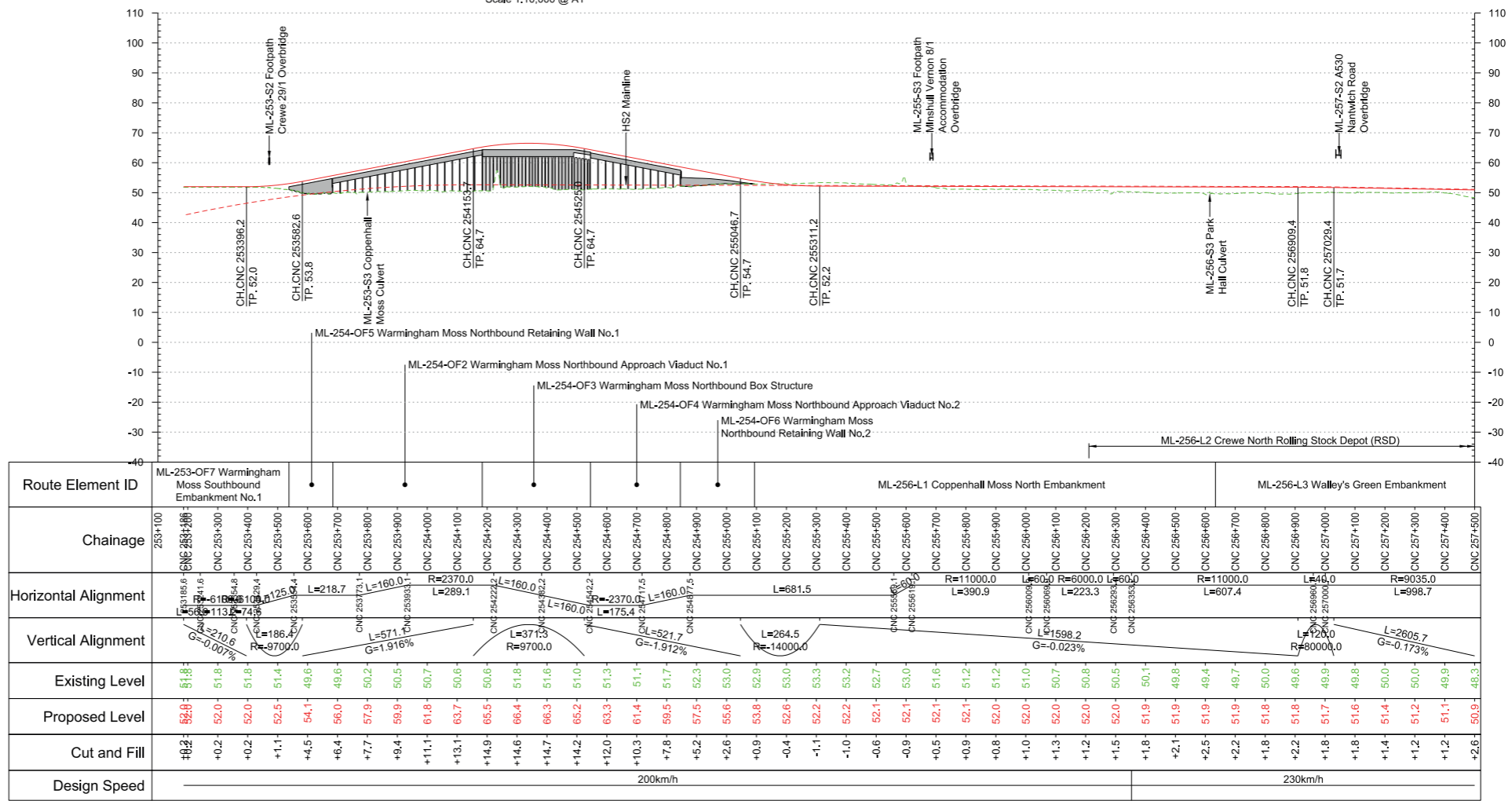


Plan  
Scale 1:10,000 @ A1



Profile  
Scale H:1:10,000 V:1:1000 @ A1

This document is issued for the party to which it is commissioned and for specific purposes connected with the captioned project only. It should not be relied upon by any other party or used for any other purpose. We accept no responsibility for the consequences of this document being relied upon by any other party, or being used for any other purpose, or containing any error or omission which is due to an error or omission in data supplied to us by other parties.

P02	AP1 Second Issue	CMC	JSA	GHU	06/12/2021	06/12/2021	06/12/2021	HS2 accepts no responsibility for any circumstances which arise from the reproduction of this document after alteration, amendment or abbreviation or if it is issued in part or issued incompletely in any way.
P01	AP1 First Issue	MWI	EMO	GHU	27/08/2021	27/08/2021	27/08/2021	© Crown Copyright and database right 2021. All rights reserved. Ordnance Survey Licence number 100048190
								© Crown Copyright material is reproduced with the permission of Land Registry under delegated authority from the Controller of HMSO. This material was last updated on 2021 and may not be copied, distributed, sold or published without the formal permission of Land Registry. Only an official copy of a title plan or register obtained from the Land Registry may be used for legal or other official purposes.
Rev	Description	Drawn	Checked	Con App	HS2 App	Scale with caution as distortion can occur.		

<ul style="list-style-type: none"> <li>Depot, station, headhouse, shaft or portal building</li> <li>Tunnel portal</li> <li>Railway system site</li> <li>Ecological mitigation pond</li> <li>Balancing pond</li> <li>Pumping station</li> <li>Replacement floodplain storage area</li> </ul>	<ul style="list-style-type: none"> <li>Woodland habitat creation</li> <li>Wetland habitat creation</li> <li>Grassland habitat creation</li> <li>Landscape mitigation planting (scrub / woodland)</li> <li>Grassed areas</li> <li>Local placement</li> <li>Public realm</li> </ul>	<ul style="list-style-type: none"> <li>Engineering earthworks</li> <li>Landscape earthworks</li> <li>Rail alignment formation</li> <li>Returned to suitable development use</li> <li>County boundary</li> <li>Borough / District boundary</li> <li>Major contour</li> </ul>	<ul style="list-style-type: none"> <li>Community area boundary</li> <li>Existing watercourse</li> <li>Watercourse diversions</li> <li>New Ditches</li> <li>Hedgerow</li> <li>Major utility works</li> <li>Noise fence barrier</li> <li>Car Park</li> </ul>	<ul style="list-style-type: none"> <li>Existing public right of way</li> <li>New, diverted or realigned public right of way</li> <li>Public right of way closure</li> <li>Tunnels external extent</li> <li>HS2 access</li> <li>Realigned highway</li> <li>Light Rail Transit</li> <li>Rail alignment</li> <li>Chainage (e.g. 10+000)</li> </ul>
---	---	---	--	---



Registered in England  
Registration No. 06791688  
Registered office:  
2 Snow Hill, Queensway,  
Birmingham, B4 6GA  
Creator/Originator  
MW JV (Mott MacDonald and WSP Joint Venture)

**Fit for Acceptance**

Zone	M2 Wide - Hough to Bamfurlong	Project/Contract	2DE01 Hybrid Bill Additional Provision 1 AP1		
Design Stage	Hybrid Bill - Interim Preliminary Design AP1	Discipline/Function	Civil		
Drawing Title	M2 Crewe North Connection	Drawn	CCL	Checked	EMO
		Date	27/08/2021	Scale	AS SHOWN
		Drawing No.	2PT24-MWJ-CV-DPP-M002-220652	Size	A1
				Rev.	P02