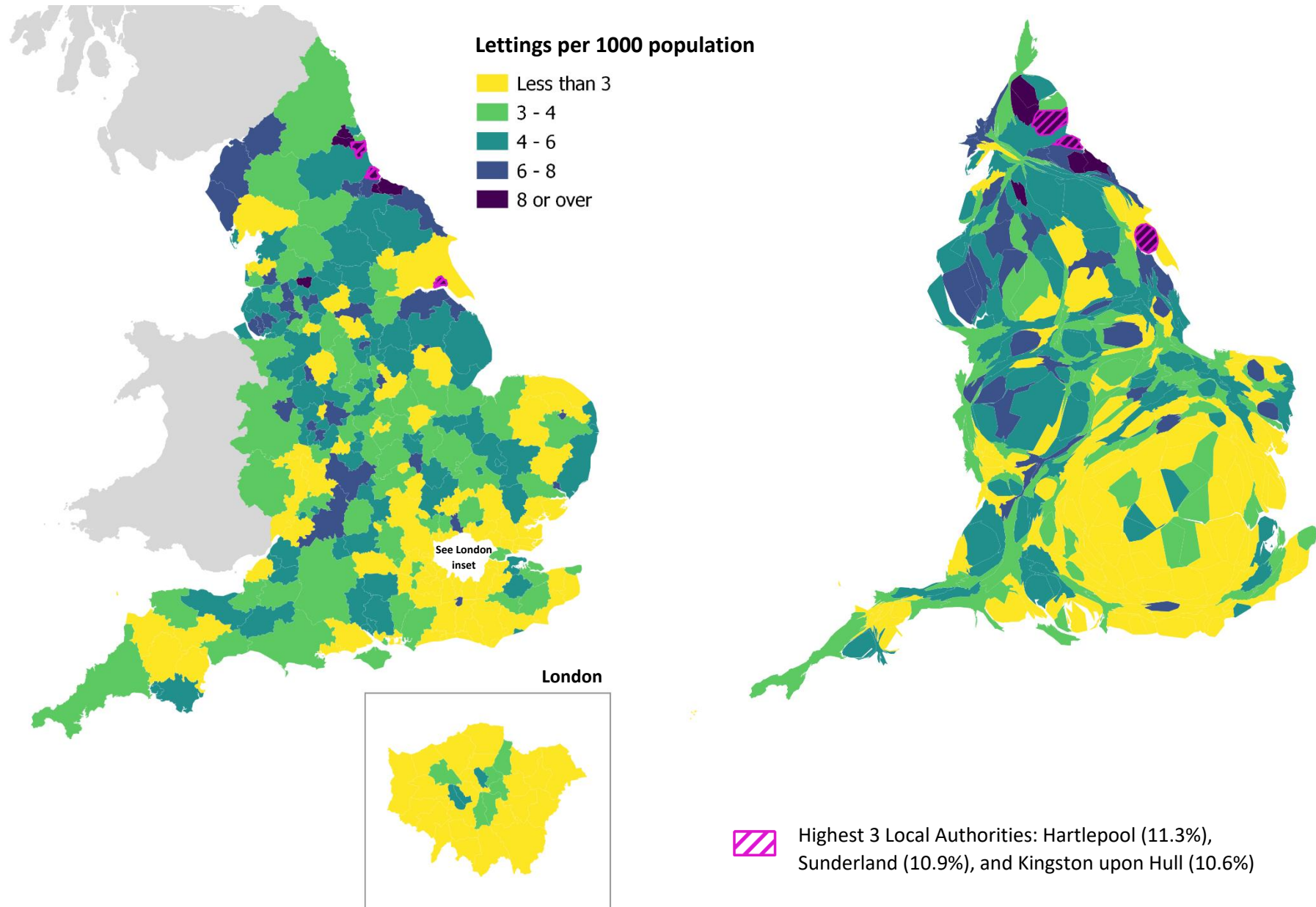
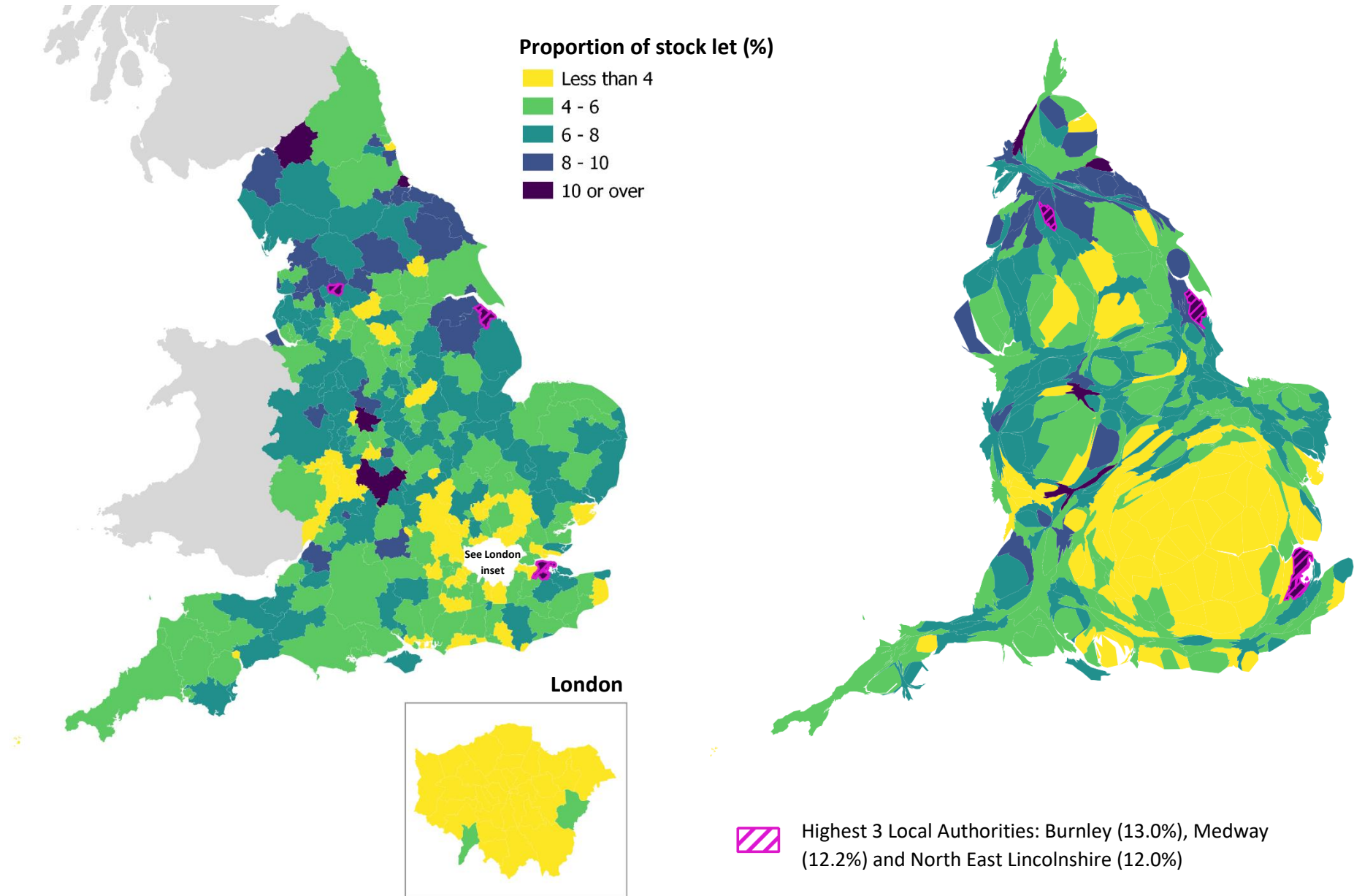


**Map 1 - The North and the Midlands had the highest proportion of new social lettings per population in 2020/21
(areas on the right-hand map are proportionate to estimated population)**

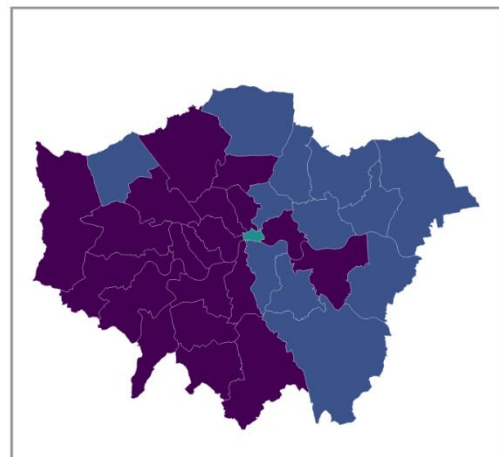
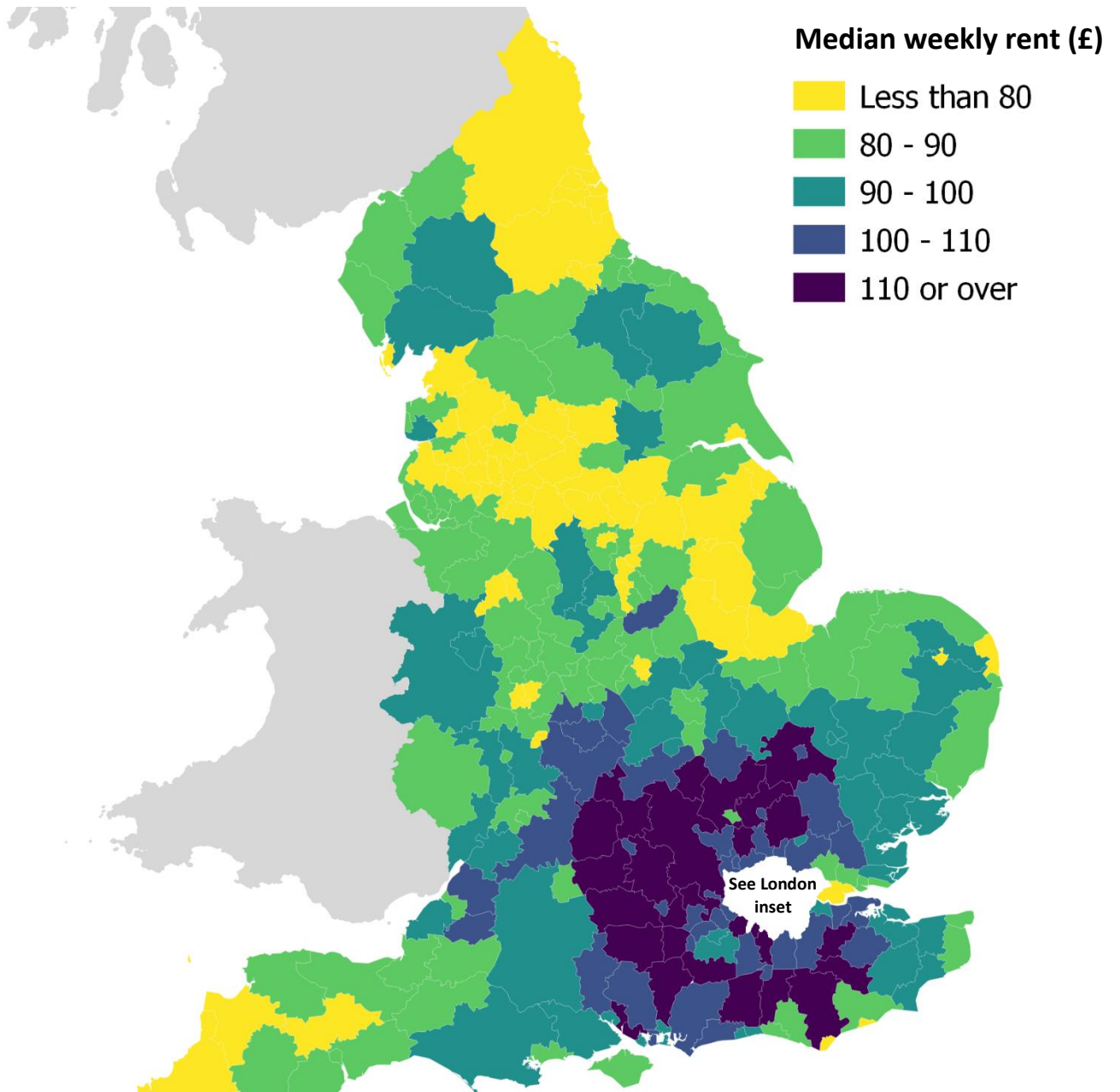


Map 2 – London was the least active area in England, with the smallest proportion of stock newly let in 2020/21 (areas on the right-hand map are proportionate to estimated population)



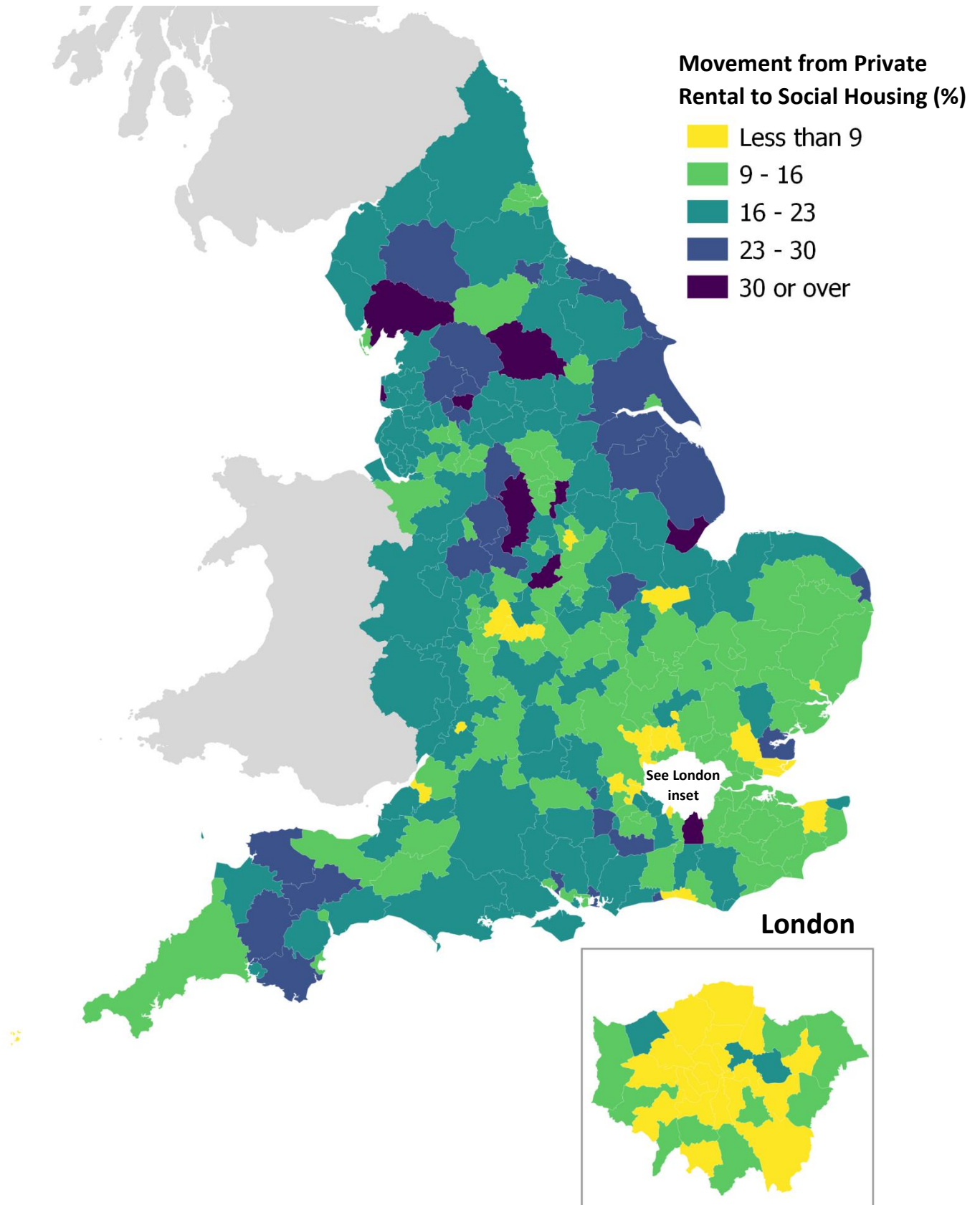
Map 3

Median weekly rents for new social lettings were highest in London and surrounding areas in 2020/21



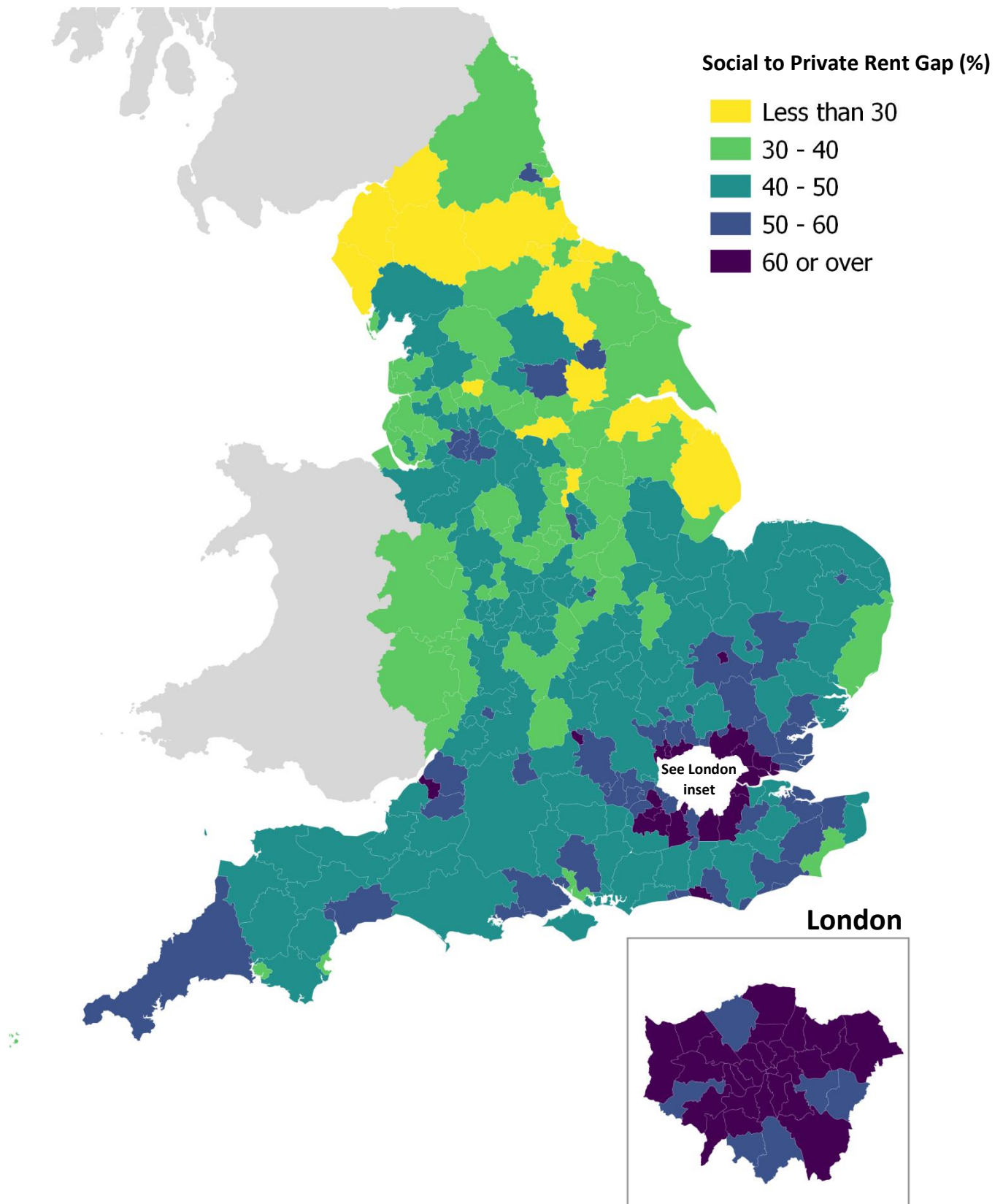
Map 4

The proportion of households moving from the private rental sector to social housing in 2020/21 was smaller in London and surrounding areas, compared to the rest of England



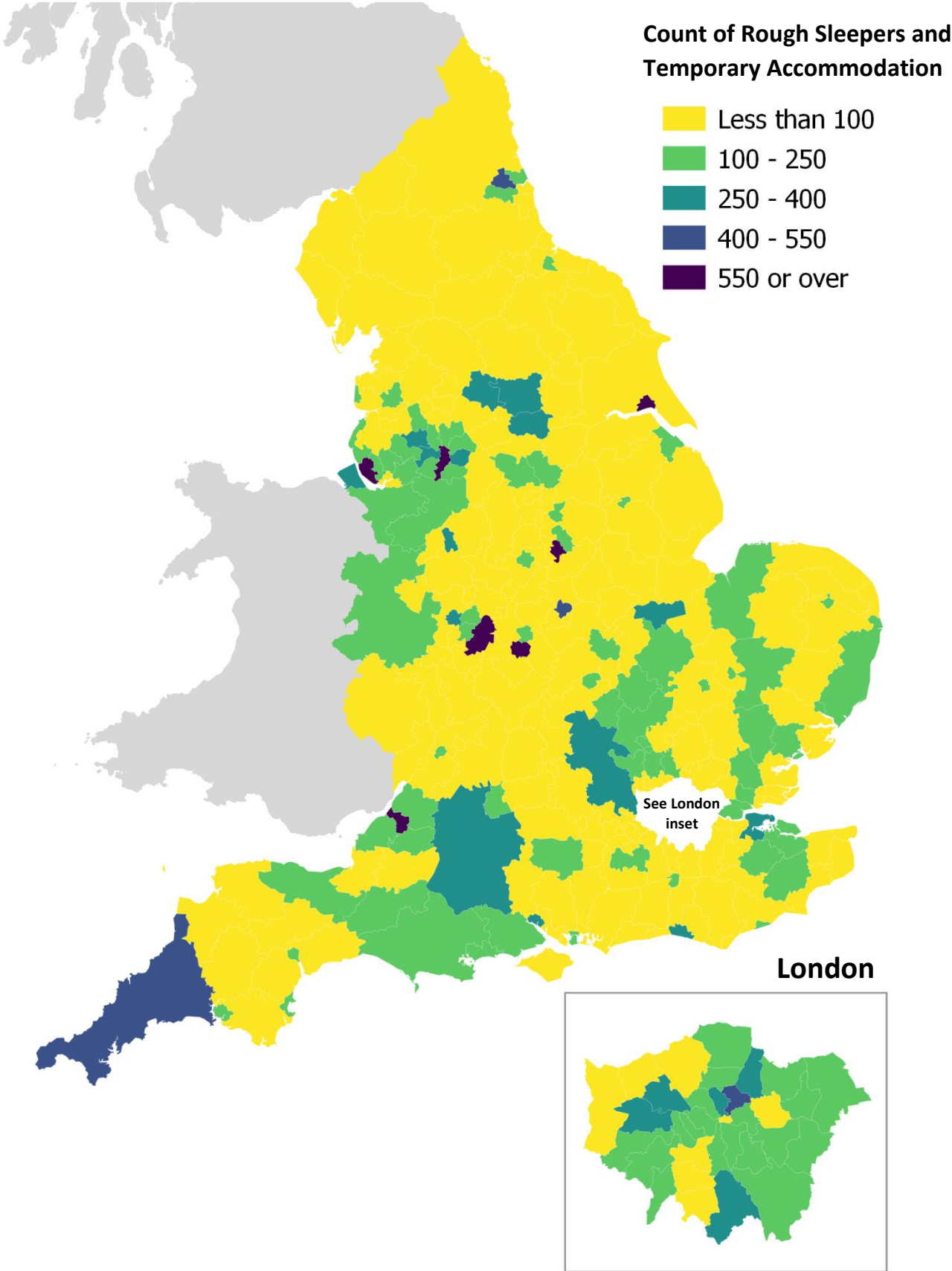
Map 5

The highest gap between weekly social and private rent for new lettings in 2020/21 was in London, reducing further away from London



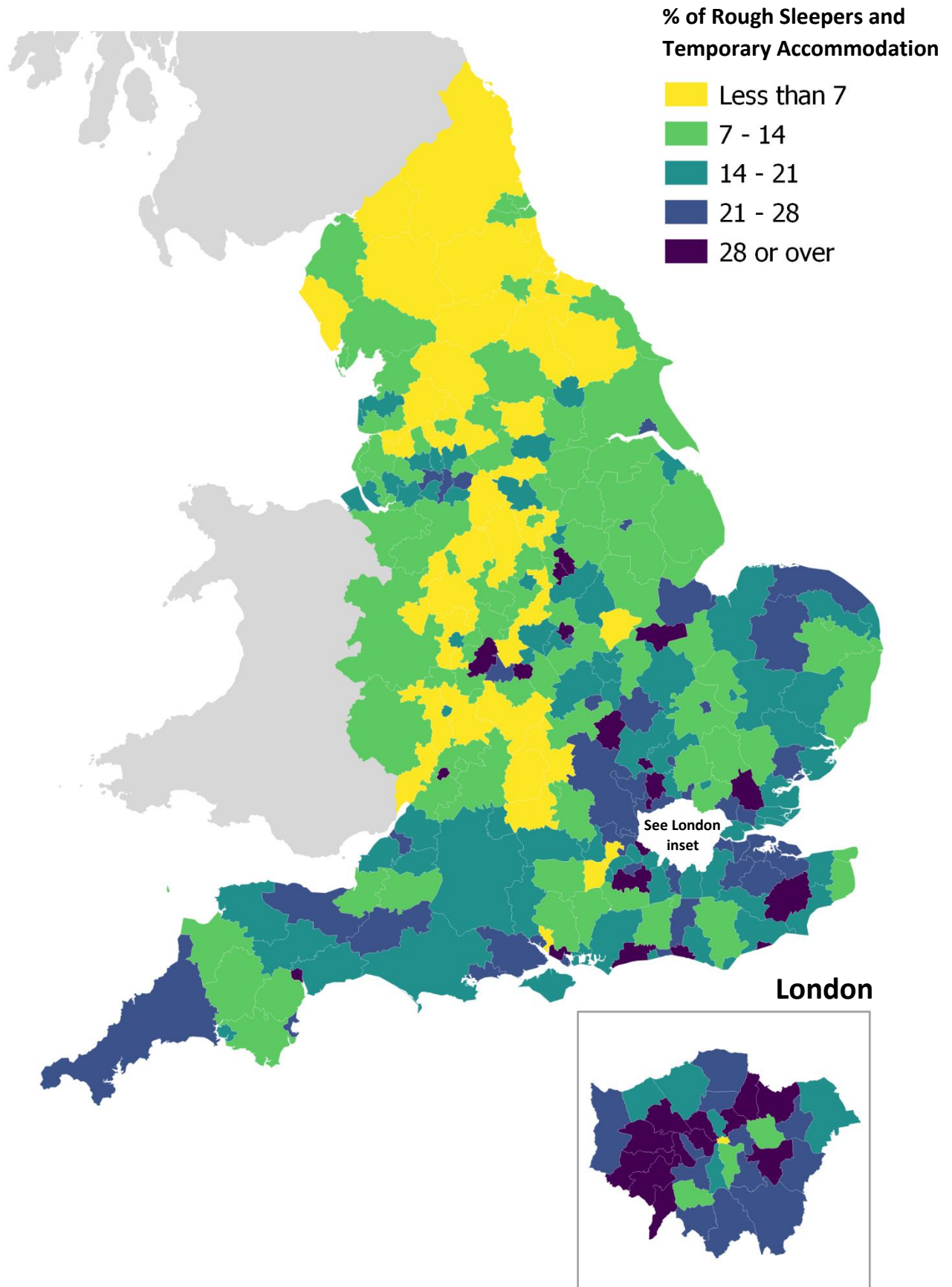
Map 6

Most new social lettings in 2020/21 to tenants previously sleeping rough or in temporary accommodation were in urban areas



Map 7

Major urban areas in 2020/21 had the highest proportion of new social lettings to tenants previously sleeping rough or in temporary accommodation - this reduces towards the North of England

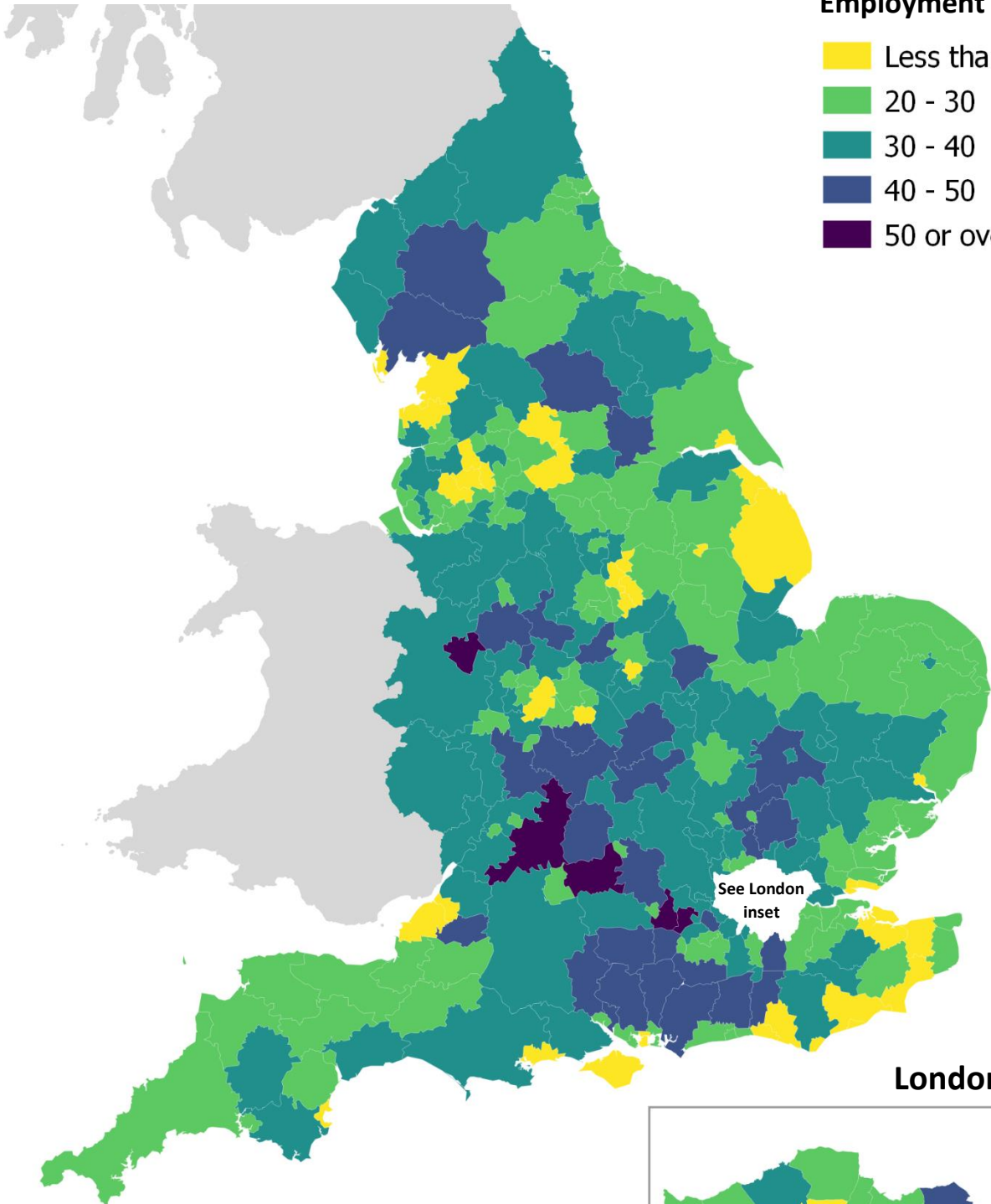


Map 8

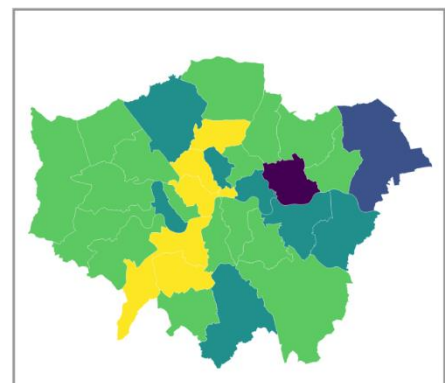
The proportion of new social lettings to lead tenants in employment was lowest in coastal areas of England in 2020/21

% of Lead Tenants in Employment

- Less than 20
- 20 - 30
- 30 - 40
- 40 - 50
- 50 or over



London

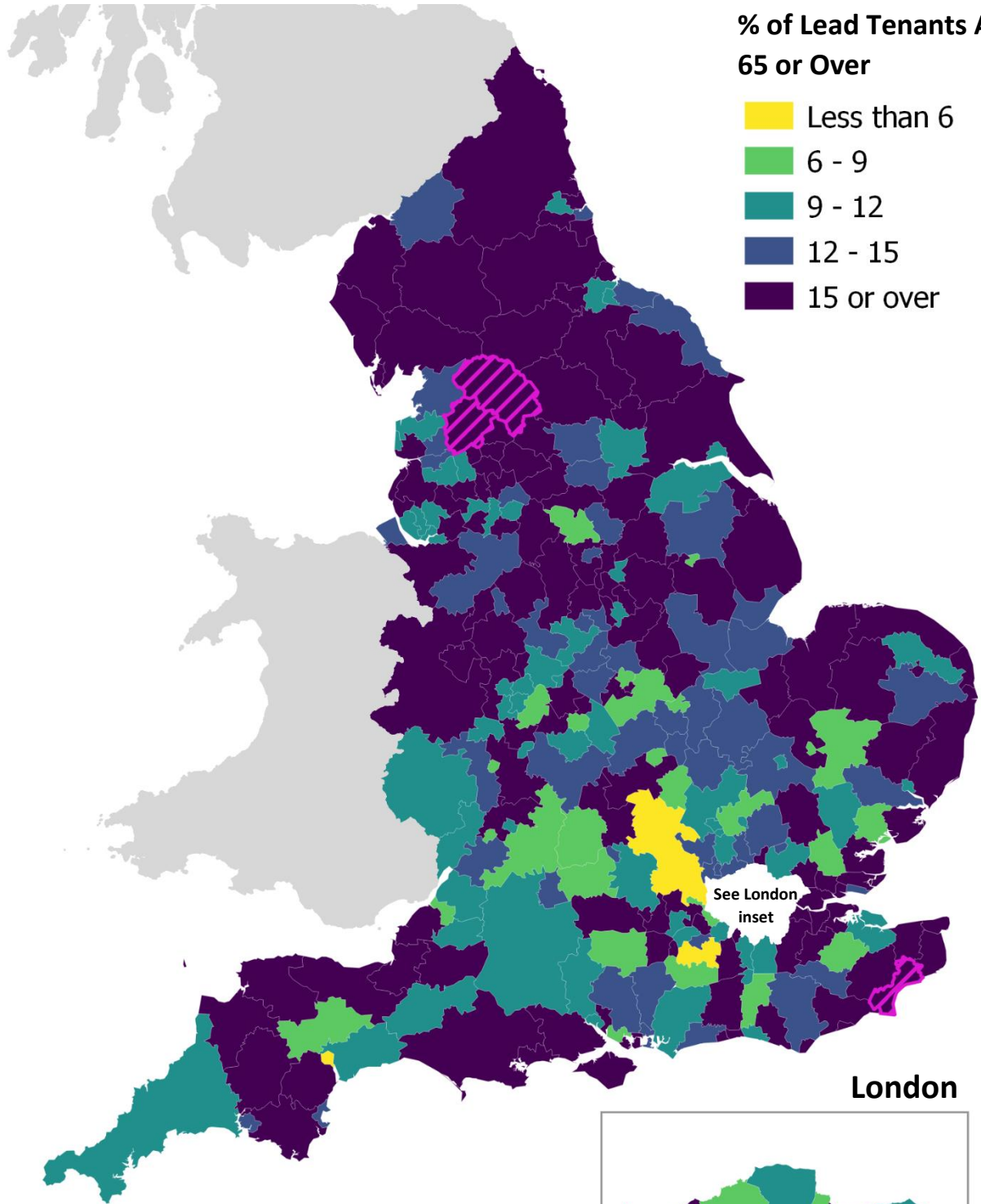


Map 9

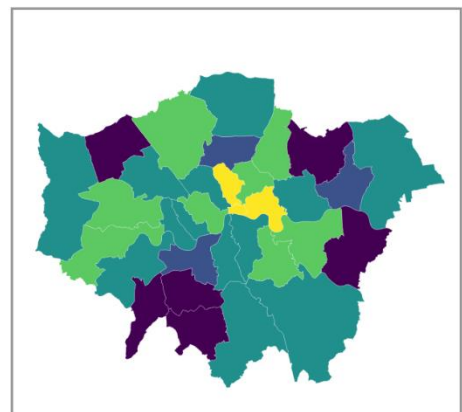
New social lettings to tenants in rural and coastal areas of England were most likely to have lead tenants aged 65 or over in 2020/21


% of Lead Tenants Aged 65 or Over

- Less than 6
- 6 - 9
- 9 - 12
- 12 - 15
- 15 or over



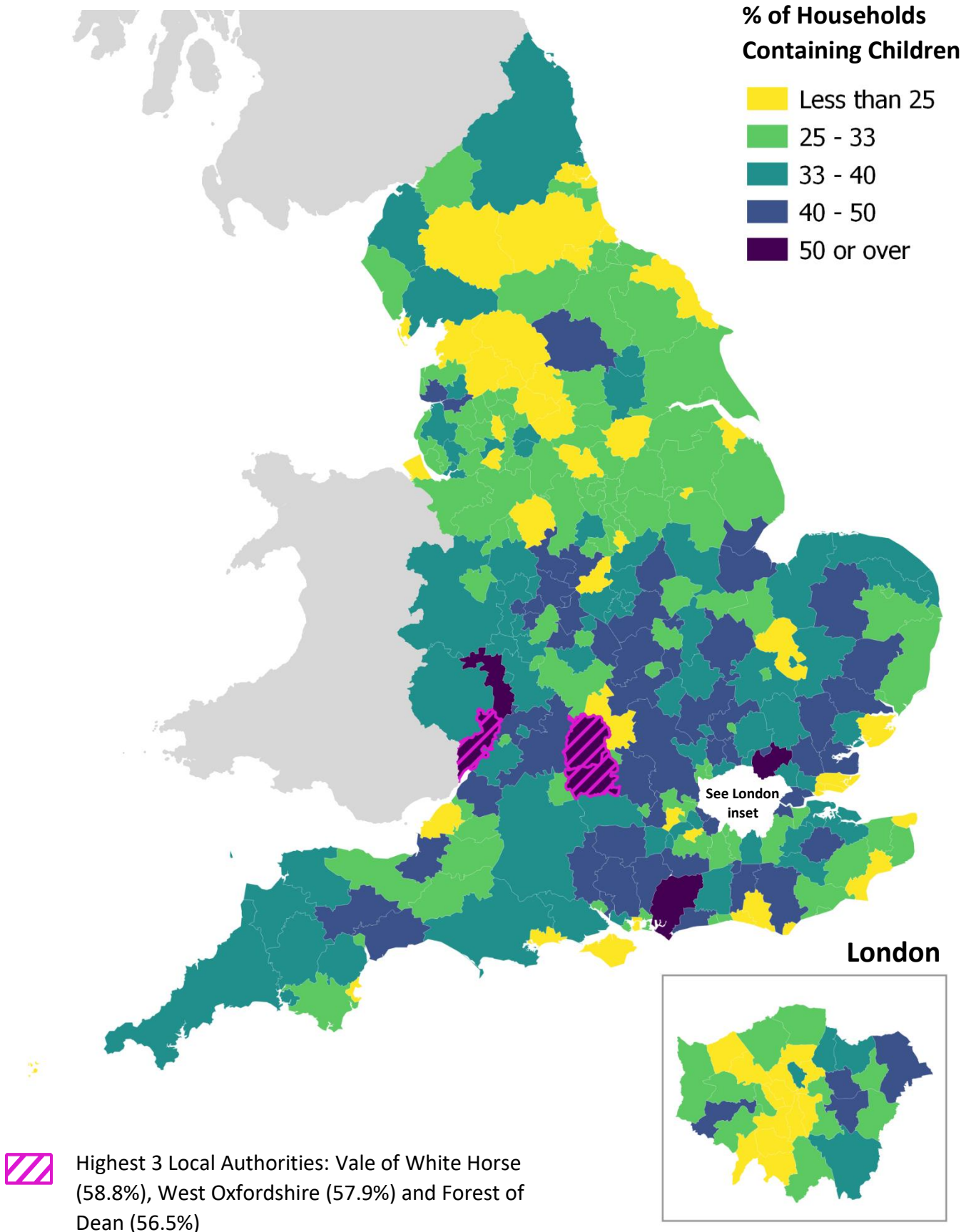
London



 Highest 3 Local Authorities: Ribble Valley (37.7%), Folkestone and Hythe (32.3%), and Craven (32.3%)

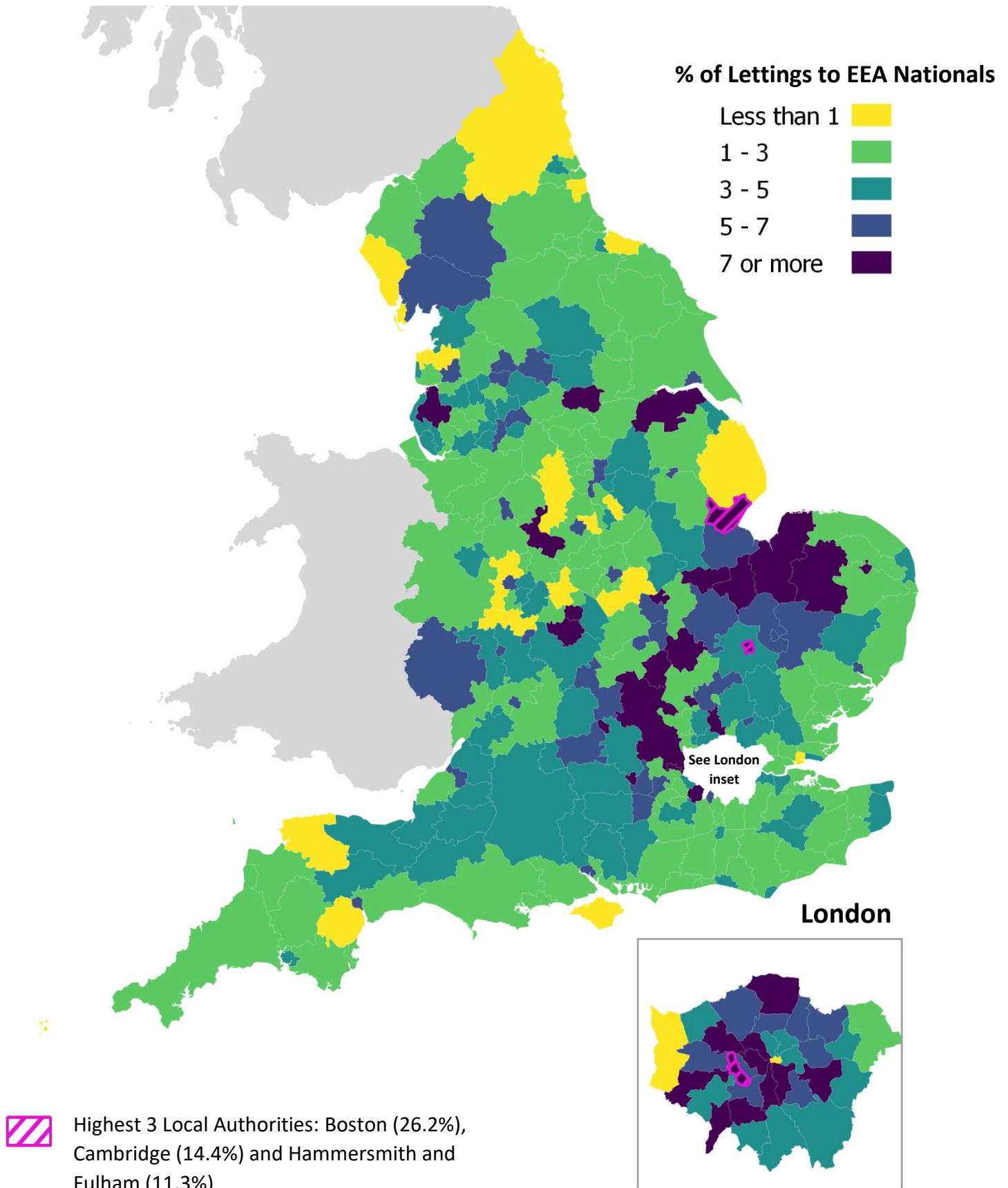
Map 10

Southern areas outside of London had the highest proportion of new social lettings to households containing children in 2020/21



Map 11

London and the Midlands had the highest proportion of new social lettings to European Economic Area (EEA) nationals in 2020/21



Map 12

The proportion of household income spent on rent in new social housing lettings in 2020/21 was highest in London and the surrounding areas

