

The Ash
3 bed house terrace
97.5 sq.m. (1049 sq.ft.)



Chase new Homes
16-18 Howard Business park
Howard Close
Waltham Abbey
Essex
EN9 1XE

Tel: 01992 766658
fax: 01992 715406

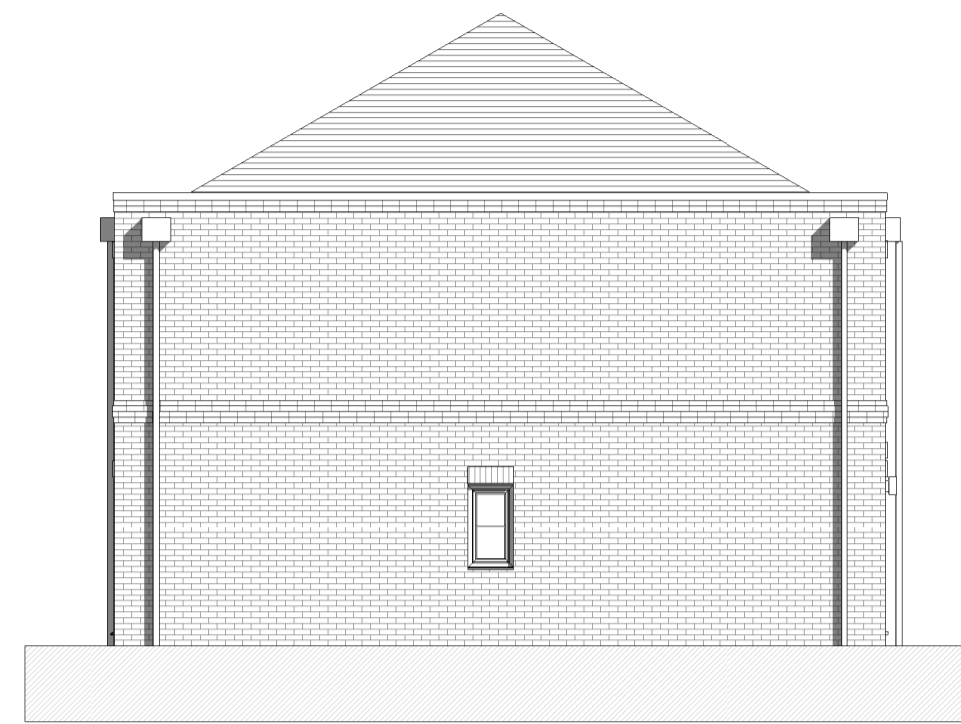
The Excitement is Building

- NOTES
- windows to have equal casements
 - walls-red facing bricks
 - roof -Eternit Thrutone Fibre Slate Blue/Black (planners may require slate roof tiles)
 - windows-dark aluminium, equal casements
 - doors-dark aluminium
 - rainwater goods-dark to match windows
 - boiler flues-black



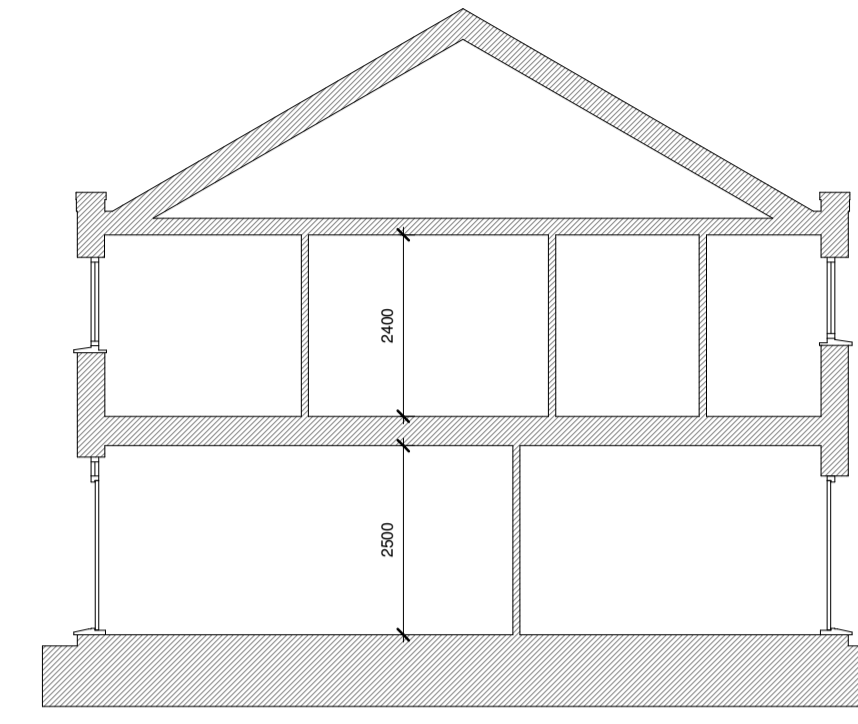
Front elevation

1 : 100



Side (left) elevation

1 : 100



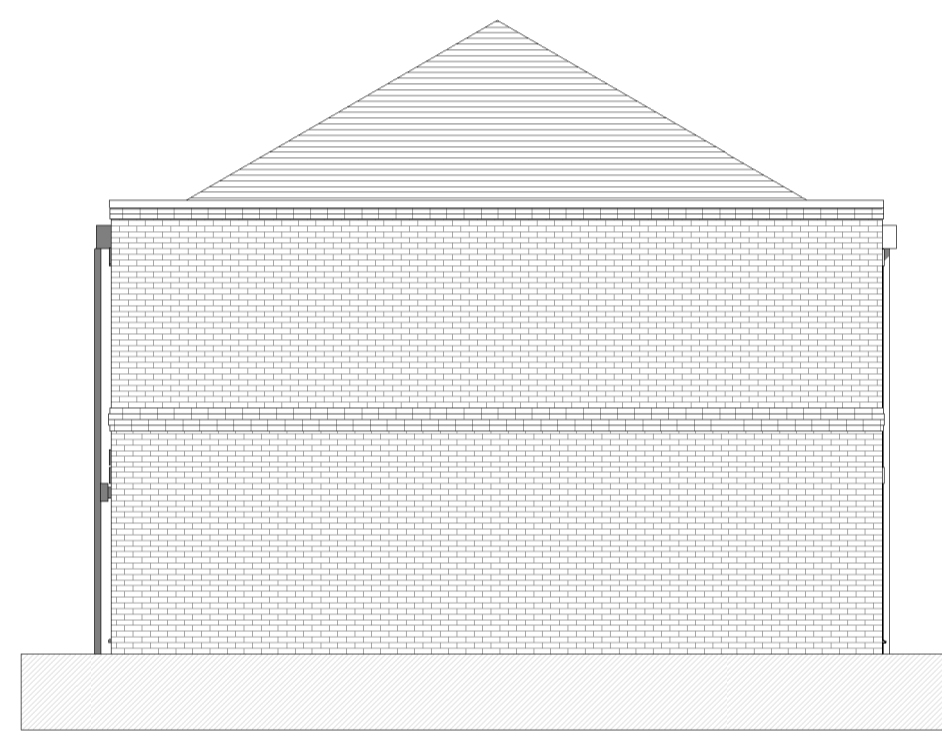
Typical section A-A

1 : 100



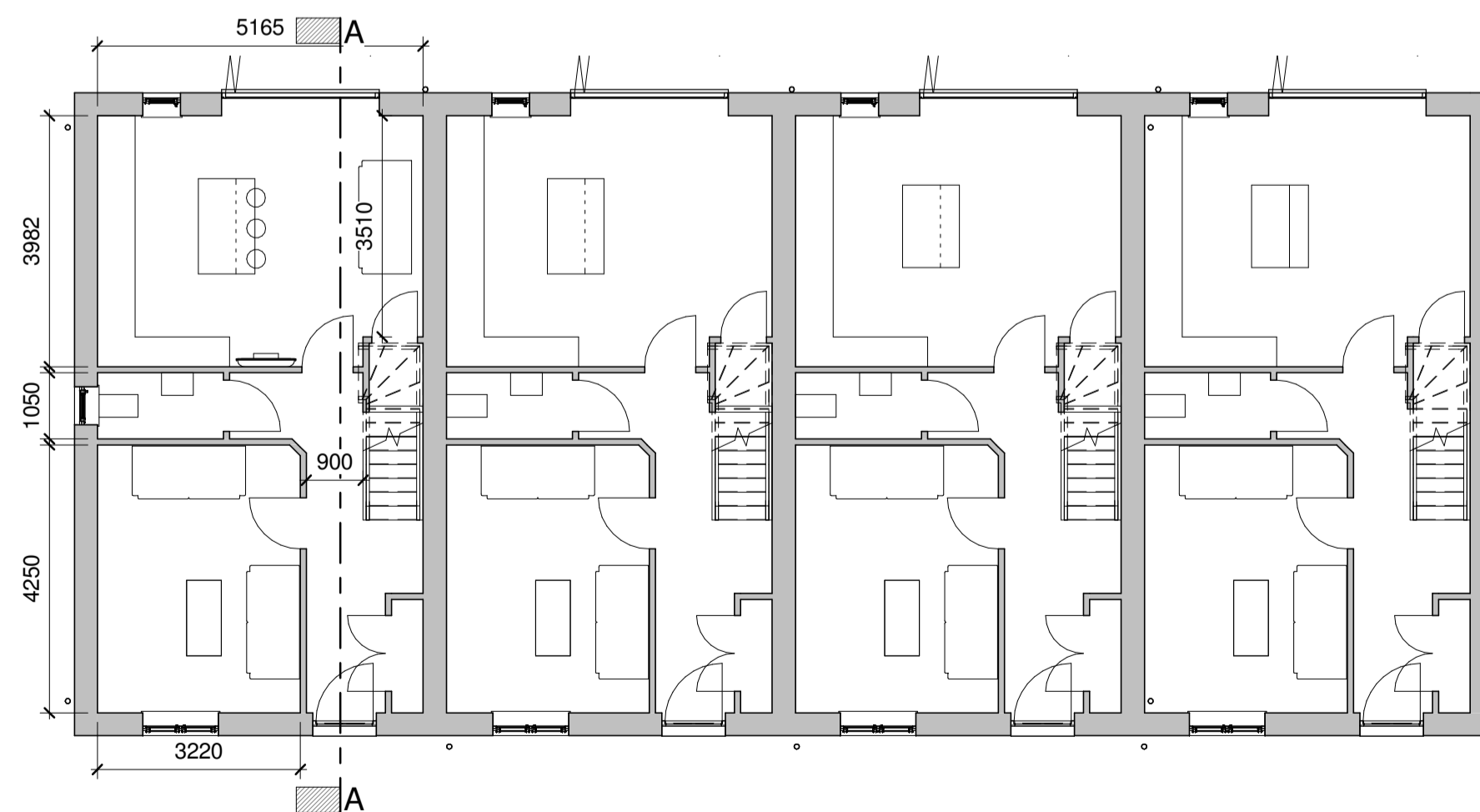
Rear elevation

1 : 100



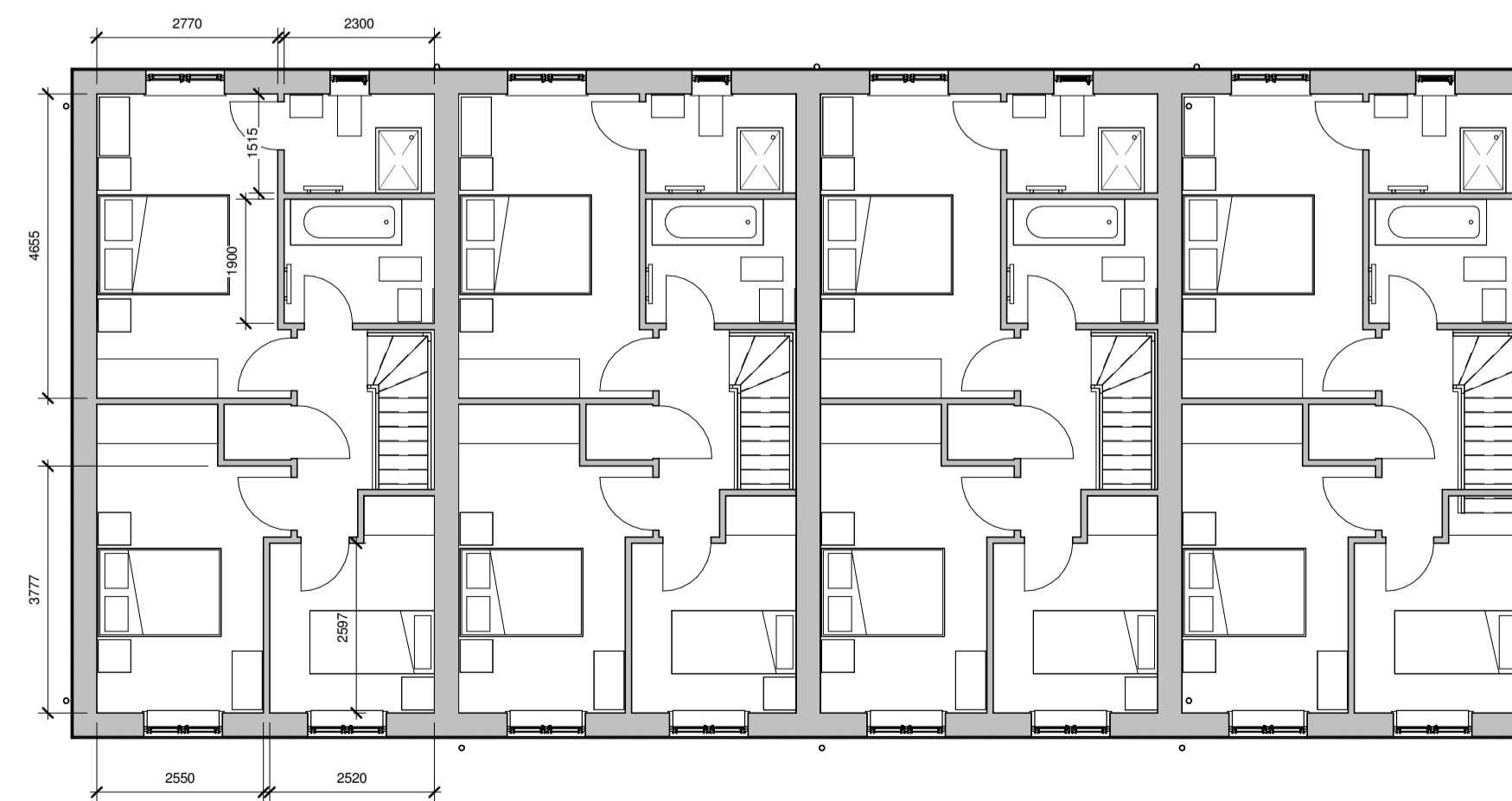
Side (right) elevation

1 : 100



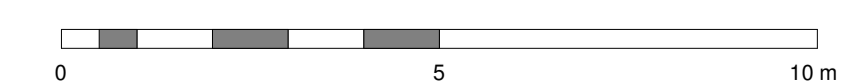
Ground Floor

1 : 100



First Floor

1 : 100



D	section revised and flank windows added	24/02/2022
C	typical section added	23/11/2021
B	general revisions post design meeting	04/11/2021
A	general revisions	29/10/2021
REV	AMENDMENTS	DATE
DRAWN BY		DATE
SL		31/05/17
SCALE (@ A1)		PROJECT NUMBER
1 : 100		21 0037
CHECKED BY		APPROVED
Checker		
TITLE		
The Ash 3 bed terrace of 4		
PROJECT		
Walden School, saffron walden		
DRAWING NUMBER		
21 0037-279 D		