



Notice of variation and consolidation with introductory note

The Environmental Permitting (England & Wales) Regulations 2016

SUEZ Recycling and Recovery Kirklees Ltd

Kirklees EfW
Vine Street
Huddersfield
West Yorkshire
HD1 6BZ

Variation application number

EPR/BJ6178IX/V008

Permit number

EPR/BJ6178IX

Kirklees EfW

Permit number EPR/BJ6178IX

Introductory note

This introductory note does not form a part of the notice

Under the Environmental Permitting (England & Wales) Regulations 2016 (schedule 5, part 1, paragraph 19) a variation may comprise a consolidated permit reflecting the variations and a notice specifying the variations included in that consolidated permit.

This variation has been issued to update the permit following a statutory review of the permits in the industry sector for incineration. The opportunity has also been taken to consolidate the original permit and subsequent variations. The Industrial Emissions Directive (IED) came into force on 7th January 2014 with the requirement to implement all relevant Best Available Techniques (BAT) conclusions as described in the Commission Implementing Decision. The BAT conclusions for incineration were published on 03 December 2019 in the Official Journal of the European Union (L323) following a European Union wide review of BAT, implementing decision 2017/2117/EU of 21 November 2017.

The schedules specify the changes made to the permit. Schedule 1 of the notice specifies the conditions that have been varied and schedule 2 comprises a consolidated permit which reflects the variations being made. All the conditions of the permit have been varied and are subject to the right of appeal.

Brief description of the process

This permit controls the operation of a waste incineration plant. The relevant listed activity is S5.1 A1 (b) 'The incineration of non-hazardous waste in a waste incineration plant with a capacity of 3 tonnes per hour or more'. The permit implements the requirements of the EU Directives on Industrial Emissions and Waste.

The main features of the permit are as follows:

| | |
|--------------------------------|-------------------------------------|
| Furnace technology | Moving Grate |
| Number of lines | 1 |
| Principal waste type | Municipal / commercial & industrial |
| Stack height | 93 m |
| Permitted plant capacity | 150,000 tonnes per year |
| Electrical generation capacity | 10 MWe |

The purpose of the activity at the installation is for the incineration of municipal and trade and commercial waste in a single stream energy from waste (EfW) plant. The heat produced is utilised to generate electricity for export to the grid. Activities associated with the incineration are receipt and storage of municipal and trade and commercial waste, production of steam and electricity, abatement of flue gas using SNCR (Selective Non-Catalytic Reduction) and handling of ash.

The EfW plant is designed to handle mainly household, trade and some commercial waste and a small amount of reject materials and residues from an adjacent Materials Recovery Facility (MRF), which is not part of the installation. All waste for treatment in the EfW facility is taken directly to the waste reception hall for unloading into the storage bunker.

Following inspection and rejection of any material not suitable for incineration, the waste in the bunker is mixed to ensure as consistent a feedstock, in terms of heating value, as possible. Further decomposition of waste will be minimised by the short residence time of the waste in the bunker, by good mixing of the waste and by regular cleaning of the reception area. Any liquids contained within the waste are collected in a sump, the contents of which are disposed of by a licensed waste disposal contractor.

The process is designed for a nominal throughput of 17 tonnes per hour, the waste being burned in a high performance moving grate furnace with a nominal thermal capacity of 42.5MWTh. Odorous air from the reception hall and other parts of the building where dust and odours are generated provides primary combustion air for the furnace. The exhaust gases leaving the furnace are cooled by passing them through a boiler. This produces superheated steam which passes through a turbo-generator, consisting of a condensing turbine, driving an electrical generator.

Approximately 10MW of electricity is exported to the grid. Exhaust gases from the boiler are passed through a semi-dry system to ensure that the final stack gases meet stringent quality standards for final discharge via the 93m high chimney. The system utilises SNCR (Selective Non-Catalytic Reduction) to reduce oxides of nitrogen, lime injection to neutralise acid components in the gases and activated carbon to remove dioxins, furans and mercury. Fabric bag filters are used to remove particulates.

The process produces bottom ash and air pollution control (APC) residues. Bottom ash is from the grate that mainly comprises mineral oxides, with a low but variable metal content. The bottom ash and oversize materials are segregated and ferrous material is removed. The ash is stored in an ash bunker inside the building before being transported off-site for use as an aggregate. APC residues comprise salts, excess lime and spent activated carbon. It contains traces of heavy metals, dioxins and furans and is therefore collected and handled separately from the bottom ash. APC residues are stored in a residues silo and are disposed of to an appropriately licensed landfill/processing plant in sealed tankers.

The facility is equipped with a computer-controlled management system that will regulate and constantly monitor the operation of the plant and the emissions to the environment.

Releases to air are from the 93m high chimney and will meet the requirements of the Industrial Emissions Directive. The environmental impact of the releases has been assessed and it indicates that they will have no significant adverse effects on human health or ecology

There are no discharges to controlled waters from the process.

The only process release to sewer will be infrequent discharge of rainwater, boiler blowdown and washdown water. This water is normally used for ash quenching.

The noise and vibration survey carried out at the time of original permit issue concluded that no additional mitigation measures beyond those already proposed are required.

The status log of a permit sets out the permitting history, including any changes to the permit reference number.

| Status log of the permit | | |
|--|---|---|
| Description | Date | Comments |
| Application received | Duly made 22/12/2000 | |
| Permit determined EPR/BJ6178IX/A001 | 06/06/2001 | |
| Application for variation EPR/BJ6178IX/V002 | Duly made 31/03/2005 | |
| Request for additional information issued | 16/05/2005 | |
| Response to additional information request | 27/06/2005 | |
| Variation determined EPR/BJ6178IX/V002 | 24/11/2005 | |
| Application for variation EPR/BJ6178IX/V003 | Duly made 09/06/2008 | |
| Variation determined EPR/BJ6178IX/V003 | 11/07/2008 | |
| Application for variation EPR/BJ6178IX/V004 | Duly made 15/10/2009 | |
| Variation determined EPR/BJ6178IX/V004 | 09/02/2010 | |
| Application for variation EPR/BJ6178IX/V005 | Duly made 23/06/2011 | Application for minor permit amendments |
| Variation determined EPR/BJ6178IX/V005 | 29/07/2011 | Varied permit issued |
| Agency variation determined EPR/BJ6178IX/V006 | 28/08/2015 | Agency variation to implement the changes introduced by IED |
| Notified change of company name and address | 07/04/2016 | Request from operator to update the company name from SITA (Kirklees) Limited to SUEZ Recycling and Recovery Kirklees Ltd and the first line of their registered office address from SITA House to SUEZ House |
| Variation issued EPR/BJ6178IX/V007 | 30/06/2016 | Varied permit issued to SUEZ Recycling and Recovery Kirklees Ltd. |
| Permit review EPR/BJ6178IX/V008 | Environment Agency Initiated variation | Statutory review of permit. BAT Conclusions published 03 December 2019. |
| Variation determined EPR/BJ6178IX/V008 | 18/05/2022 | |

End of introductory note

Notice of variation and consolidation

The Environmental Permitting (England and Wales) Regulations 2016

The Environment Agency in exercise of its powers under regulation 20 of the Environmental Permitting (England and Wales) Regulations 2016 varies

Permit number

EPR/BJ6178IX

Issued to

SUEZ Recycling and Recovery Kirklees Ltd (“the operator”)

whose registered office is

**SUEZ House
Grenfell Road
Maidenhead
Berkshire
SL6 1ES**

company registration number 03497105

to operate a regulated facility at

**Kirklees EfW
Vine Street
Huddersfield
West Yorkshire
HD1 6BZ**

to the extent set out in the schedules.

The notice shall take effect from 18/05/2022

| Name | Date |
|----------------------|-------------------|
| Sandra Cavill | 18/05/2022 |

Authorised on behalf of the Environment Agency

Schedule 1

All conditions have been varied by the consolidated permit as a result of an Environment Agency initiated variation.

Schedule 2 – consolidated permit

Consolidated permit issued as a separate document.

Permit

The Environmental Permitting (England and Wales) Regulations 2016

Permit number

EPR/BJ6178IX

This is the consolidated permit referred to in the variation and consolidation notice for application EPR/BJ6178IX/V008 authorising,

SUEZ Recycling and Recovery Kirklees Ltd (“the operator”),

whose registered office is

**SUEZ House
Grenfell Road
Maidenhead
Berkshire
SL6 1ES**

company registration number 03497105

to operate an installation at

**Kirklees EfW
Vine Street
Huddersfield
West Yorkshire
HD1 6BZ**

to the extent authorised by and subject to the conditions of this permit.

| Name | Date |
|---------------|------------|
| Sandra Cavill | 18/05/2022 |

Authorised on behalf of the Environment Agency

Conditions

1 Management

1.1 General management

- 1.1.1 The operator shall manage and operate the activities:
- (a) in accordance with a written management system that identifies and minimises risks of pollution, including those arising from operations, maintenance, accidents, incidents, non-conformances, closure and those drawn to the attention of the operator as a result of complaints; and
 - (b) using sufficient competent persons and resources.
 - (c) referenced in schedule 1, table S1.1, Activity AR1, from 03/12/2023, in accordance with a written other than normal operating conditions (OTNOC) management plan.
- 1.1.2 Records demonstrating compliance with condition 1.1.1 shall be maintained.
- 1.1.3 The operator shall review the written management system at least every 3 years or otherwise as requested by the Environment Agency.
- 1.1.4 Any person having duties that are or may be affected by the matters set out in this permit shall have convenient access to a copy of it kept at or near the place where those duties are carried out.

1.2 Energy efficiency

- 1.2.1 For the following activities referenced in schedule 1, Table S1.1 'AR1' the operator shall:
- (a) take appropriate measures to ensure that energy is recovered with a high level of energy efficiency and energy is used efficiently in the activities.
 - (b) review and record at least every four years whether there are suitable opportunities to improve the energy efficiency of the activities; and
 - (c) take any further appropriate measures identified by a review.
- 1.2.2 The operator shall provide and maintain steam and/or hot water pass-outs such that opportunities for the further use of waste heat may be capitalised upon should they become practicable.
- 1.2.3 The operator shall review the viability of Combined Heat and Power (CHP) implementation at least every 4 years, or in response to any of the following factors, whichever comes sooner:
- (a) new plans for significant developments within 15 km of the installation;
 - (b) changes to the Local Plan;
 - (c) changes to the UK CHP Development Map or similar; and
 - (d) new financial or fiscal incentives for CHP.

The results shall be reported to the Agency within 2 months of each review, including where there has been no change to the original assessment in respect of the above factors

1.3 Efficient use of raw materials

- 1.3.1 For the following activities referenced in schedule 1, Table S1.1 'AR1', The operator shall:
- (a) take appropriate measures to ensure that raw materials and water are used efficiently in the activities;
 - (b) maintain records of raw materials and water used in the activities;

- (c) review and record at least every four years whether there are suitable alternative materials that could reduce environmental impact or opportunities to improve the efficiency of raw material and water use; and
- (d) take any further appropriate measures identified by a review.

1.4 Avoidance, recovery and disposal of wastes produced by the activities

1.4.1 The operator shall take appropriate measures to ensure that:

- (a) the waste hierarchy referred to in Article 4 of the Waste Framework Directive is applied to the generation of waste by the activities; and
- (b) any waste generated by the activities is treated in accordance with the waste hierarchy referred to in Article 4 of the Waste Framework Directive; and
- (c) where disposal is necessary, this is undertaken in a manner which minimises its impact on the environment.

1.4.2 The operator shall review and record at least every four years whether changes to those measures should be made and take any further appropriate measures identified by a review.

2 Operations

2.1 Permitted activities

2.1.1 The operator is only authorised to carry out the activities specified in schedule 1 table S1.1 (the "activities").

2.1.2 Waste authorised by this permit shall be clearly distinguished from any other waste on the site.

2.2 The site

2.2.1 The activities shall not extend beyond the site, being the land shown edged in green on the site plan at schedule 7 to this permit.

2.3 Operating techniques

2.3.1 The activities shall, subject to the conditions of this permit, be operated using the techniques and in the manner described in the documentation specified in schedule 1, table S1.2, unless otherwise agreed in writing by the Environment Agency.

2.3.2 If notified by the Environment Agency that the activities are giving rise to pollution, the operator shall submit to the Environment Agency for approval within the period specified, a revision of any plan specified in schedule 1, table S1.2 or otherwise required under this permit which identifies and minimises the risks of pollution relevant to that plan, and shall implement the approved revised plan in place of the original from the date of approval, unless otherwise agreed in writing by the Environment Agency.

2.3.3 Any raw materials or fuels listed in schedule 2 table S2.1 shall conform to the specifications set out in that table.

2.3.4 Waste shall only be accepted if:

- (a) it is of a type and quantity listed in schedule 2 table S2.2; and
- (b) it conforms to the description in the documentation supplied by the producer or holder.

- 2.3.5 Waste paper, metal, plastic or glass that has been separately collected for the purpose of preparing for re-use or recycling shall not be accepted. Waste from the treatment of these separately collected wastes shall only be accepted if incineration delivers the best environmental outcome in accordance with regulation 12 of the Waste (England and Wales) Regulations 2011.
- 2.3.6 Separately collected fractions other than those listed in condition 2.3.5 shall not be accepted unless they are unsuitable for recovery by recycling.
- 2.3.7 The operator shall ensure that where waste produced by the activities is sent to a relevant waste operation, that operation is provided with the following information, prior to the receipt of the waste:
- the nature of the process producing the waste;
 - the composition of the waste;
 - the handling requirements of the waste;
 - the hazardous property associated with the waste, if applicable; and
 - the waste code of the waste.
- 2.3.8 The operator shall ensure that where waste produced by the activities is sent to a landfill site, it meets the waste acceptance criteria for that landfill.
- 2.3.9 Waste shall not be charged if:
- the combustion chamber temperature is below 850 °C,
 - any continuous emission limit value in schedule 3 table S3.1(a) is exceeded; or
 - any continuous emission limit value in schedule 3 table S3.1 is exceeded, other than during abnormal operation; or
 - continuous emission monitors to demonstrate compliance with any continuous emission limit value in schedule 3 table S3.1 are unavailable other than during abnormal operation; or
 - there is a stoppage, disturbance or failure of the activated carbon abatement system, other than during abnormal operation.
 - continuous emission monitors to demonstrate compliance with the emission limit values for particulates, TOC or CO in schedule 3 are unavailable unless alternative techniques, as agreed in writing with the Environment Agency, are used to demonstrate compliance with those emission limit values.
- 2.3.10 The operator shall record the beginning and end of each period of “abnormal operation”.
- 2.3.11 During a period of “abnormal operation”, the operator shall restore normal operation of the failed equipment or replace the failed equipment as soon as possible.
- 2.3.12 The operator shall interpret the start of the period of “abnormal operation” as the earliest of the following:
- a technically unavoidable stoppage, disturbance, or failure of continuous emission monitors.
 - a technically unavoidable stoppage, disturbance, or failure of the activated carbon abatement system
 - Any other technically unavoidable stoppage, disturbance, or failure of the plant which is causing or could lead to an exceedance of an emission limit value in table S3.1.
- 2.3.13 The operator shall interpret the end of the period of “abnormal operation” as the earliest of the following:
- when the failed equipment is repaired and brought back into normal operation;
 - when the operator initiates a shut down of the waste combustion activity, as described in the application or as agreed in writing with the Environment Agency;

- (c) The failed equipment has not been repaired and brought back into normal operation and a single period of abnormal operation reaches a duration of 4 hours after the start of abnormal operation on an incineration line
- (d) Abnormal operation occurs on an incineration line and the cumulative duration of abnormal operation periods over 1 calendar year has reached 60 hours on that incineration line;

2.3.14 The operator shall have at least one auxiliary burner in each line which shall be operated at start up, shut down and as required during operation to ensure that the operating temperature specified in condition 2.3.9 is maintained as long as incompletely burned waste is present in the combustion chamber. Unless the temperature specified in condition 2.3.9 is maintained in the combustion chamber, such burner(s) shall be fed only with fuels which result in emissions no higher than those arising from the use of gas oil, liquefied gas or natural gas.

2.3.15 Bottom ash and APC residues shall not be mixed.

2.4 Improvement programme

- 2.4.1 The operator shall complete the improvements specified in schedule 1 table S1.3 by the date specified in that table unless otherwise agreed in writing by the Environment Agency.
- 2.4.2 Except in the case of an improvement which consists only of a submission to the Environment Agency, the operator shall notify the Environment Agency within 14 days of completion of each improvement.

3 Emissions and monitoring

3.1 Emissions to water, air or land

- 3.1.1 There shall be no point source emissions to water, air or land except from the sources and emission points listed in schedule 3 tables S3.1, S3.1(a) and S3.2.
- 3.1.2 The limits given in schedule 3, subject to condition 3.2.1, shall not be exceeded.
- 3.1.3 Wastes produced at the site shall, as a minimum, be sampled and analysed in accordance with schedule 3 table S3.4. Additional samples shall be taken and tested and appropriate action taken, whenever:
 - (a) disposal or recovery routes change; or
 - (b) it is suspected that the nature or composition of the waste has changed such that the route currently selected may no longer be appropriate.

3.2 Emissions limits and monitoring for emission to air for incineration plant

- 3.2.1 The limits for emissions to air apply as follows:
 - (a) The limits in table S3.1 shall not be exceeded except during periods of abnormal operation.
 - (b) The limits in table S3.1(a) shall not be exceeded.
- 3.2.2 Where Continuous Emission Monitors are installed to comply with the monitoring requirements in schedule 3 table S3.1 and S3.1(a); the Continuous Emission Monitors shall be used such that:
 - (a) the values of the 95% confidence intervals of a single measured result at the daily emission limit value shall not exceed the following percentages of the emission limit values:
 - Carbon monoxide 10%

- Sulphur dioxide 20%
 - Oxides of nitrogen (NO & NO₂ expressed as NO₂) 20%
 - Particulate matter 30%
 - Total organic carbon (TOC) 30%
 - Hydrogen chloride 40%
 - Ammonia 40%
- (b) valid half-hourly average values or 10-minute averages shall be determined within the effective operating time (excluding the start-up and shut-down periods) from the measured values after having subtracted the value of the confidence intervals in condition 3.2.2 (a).
- (c) where it is necessary to calibrate or maintain the Monitor and this means that data are not available for a complete half-hour or 10 minute period, the half-hourly average or 10-minute average shall in any case be considered valid if measurements are available for a minimum of 20 minutes or 7 minutes during the half-hour or 10-minute period respectively. The number of half-hourly or 10-minute averages so validated shall not exceed 5 or 15 respectively per day;
- (d) daily average values shall be calculated as follows:
- (i) the average of valid half hourly averages or 10 minute averages over a calendar day excluding half hourly averages or 10 minute averages during periods of abnormal operation. The daily average value shall be considered valid if no more than five half-hourly average or fifteen 10-minute average values in any day have been determined not to be valid;
- (e) no more than ten daily average values per year shall be determined not to be valid.

3.3 Emissions of substances not controlled by emission limits

- 3.3.1 Emissions of substances not controlled by emission limits (excluding odour) shall not cause pollution. The operator shall not be taken to have breached this condition if appropriate measures, including, but not limited to, those specified in any approved emissions management plan, have been taken to prevent or where that is not practicable, to minimise, those emissions.
- 3.3.2 The operator shall:
- (a) if notified by the Environment Agency that the activities are giving rise to pollution, submit to the Environment Agency for approval within the period specified, an emissions management plan which identifies and minimises the risks of pollution from emissions of substances not controlled by emission limits;
 - (b) implement the approved emissions management plan, from the date of approval, unless otherwise agreed in writing by the Environment Agency.
- 3.3.3 All liquids in containers, whose emission to water or land could cause pollution, shall be provided with secondary containment, unless the operator has used other appropriate measures to prevent or where that is not practicable, to minimise, leakage and spillage from the primary container.
- 3.3.4 Periodic monitoring shall be carried out at least once every 5 years for groundwater and 10 years for soil, unless such monitoring is based on a systematic appraisal of the risk of contamination.

3.4 Odour

- 3.4.1 Emissions from the activities shall be free from odour at levels likely to cause pollution outside the site, as perceived by an authorised officer of the Environment Agency, unless the operator has used

appropriate measures, including, but not limited to, those specified in any approved odour management plan, to prevent or where that is not practicable to minimise the odour.

3.4.2 The operator shall:

- (a) if notified by the Environment Agency that the activities are giving rise to pollution outside the site due to odour, submit to the Environment Agency for approval within the period specified, an odour management plan which identifies and minimises the risks of pollution from odour;
- (b) implement the approved odour management plan, from the date of approval, unless otherwise agreed in writing by the Environment Agency.

3.5 Noise and vibration

3.5.1 Emissions from the activities shall be free from noise and vibration at levels likely to cause pollution outside the site, as perceived by an authorised officer of the Environment Agency, unless the operator has used appropriate measures, including, but not limited to, those specified in any approved noise and vibration management plan to prevent or where that is not practicable to minimise the noise and vibration.

3.5.2 The operator shall:

- (a) if notified by the Environment Agency that the activities are giving rise to pollution outside the site due to noise and vibration, submit to the Environment Agency for approval within the period specified, a noise and vibration management plan which identifies and minimises the risks of pollution from noise and vibration;
- (b) implement the approved noise and vibration management plan, from the date of approval, unless otherwise agreed in writing by the Environment Agency.

3.6 Monitoring

3.6.1 The operator shall, unless otherwise agreed in writing by the Environment Agency, undertake the monitoring specified in the following tables in schedule 3 to this permit:

- (a) point source emissions specified in tables S3.1, S3.1(a) and S3.2;
- (b) process monitoring specified in table S3.3; and
- (c) residue quality in table S3.4

3.6.2 The operator shall maintain records of all monitoring required by this permit including records of the taking and analysis of samples, instrument measurements (periodic and continual), calibrations, examinations, tests and surveys and any assessment or evaluation made on the basis of such data.

3.6.3 Monitoring equipment, techniques, personnel and organisations employed for the emissions monitoring programme and the environmental or other monitoring specified in condition 3.6.1 shall have either MCERTS certification or MCERTS accreditation (as appropriate) unless otherwise agreed in writing by the Environment Agency. Newly installed CEMs, or CEMs replacing existing CEMs, shall have MCERTS certification and unless otherwise agreed in writing by the Environment Agency have an MCERTS certified range which is not greater than 1.5 times the daily emission limit value (ELV) specified in schedule 3 table S3.1. The CEM shall also be able to measure instantaneous values over the ranges which are to be expected during all operating conditions. If it is necessary to use more than one range setting of the CEM to achieve this requirement, the CEM shall be verified for monitoring supplementary, higher ranges. Newly installed Data handling and acquisition systems (DAHS), or DAHS replacing existing DAHS, shall have MCERTS certification.

3.6.4 Permanent means of access shall be provided to enable sampling/monitoring to be carried out in relation to the emission points specified in schedule 3 tables S3.1, S3.1(a) and S3.2 unless otherwise agreed in writing by the Environment Agency.

3.7 Pests

- 3.7.1 The activities shall not give rise to the presence of pests which are likely to cause pollution, hazard or annoyance outside the boundary of the site. The operator shall not be taken to have breached this condition if appropriate measures, including, but not limited to, those specified in any approved pests management plan, have been taken to prevent or where that is not practicable, to minimise the presence of pests on the site.
- 3.7.2 The operator shall:
- (a) if notified by the Environment Agency, submit to the Environment Agency for approval within the period specified, a pests management plan which identifies and minimises risks of pollution from pests;
 - (b) implement the pests management plan, from the date of approval, unless otherwise agreed in writing by the Environment Agency.

3.8 Fire prevention

- 3.8.1 The operator shall take all appropriate measures to prevent fires on site and minimise the risk of pollution from them including, but not limited to, those specified in any approved fire prevention plan.
- 3.8.2 The operator shall:
- (a) if notified by the Environment Agency that the activities are giving rise to a risk of fire, submit to the Environment Agency for approval within the period specified, a fire prevention plan which prevents fires and minimises the risk of pollution from fires;
 - (b) implement the fire prevention plan, from the date of approval, unless otherwise agreed in writing by the Environment Agency.

4 Information

4.1 Records

- 4.1.1 All records required to be made by this permit shall:
- (a) be legible;
 - (b) be made as soon as reasonably practicable;
 - (c) if amended, be amended in such a way that the original and any subsequent amendments remain legible, or are capable of retrieval; and
 - (d) be retained, unless otherwise agreed in writing by the Environment Agency, for at least 6 years from the date when the records were made, or in the case of the following records until permit surrender:
 - (i) off-site environmental effects; and
 - (ii) matters which affect the condition of the land and groundwater.
- 4.1.2 The operator shall keep on site all records, plans and the management system required to be maintained by this permit, unless otherwise agreed in writing by the Environment Agency.

4.2 Reporting

- 4.2.1 The operator shall send all reports and notifications required by the permit to the Environment Agency using the contact details supplied in writing by the Environment Agency.

- 4.2.2 For the following activities referenced in schedule 1, table S1.1; AR1. A report or reports on the performance of the activities over the previous year shall be submitted to the Environment Agency by 31 January (or other date agreed in writing by the Environment Agency) each year using the annual report form specified in schedule 4, table S4.4 or otherwise in a format agreed with the Environment Agency. The report(s) shall include as a minimum:
- (a) a review of the results of the monitoring and assessment carried out in accordance with the permit including an interpretive review of that data;
 - (b) the annual production / treatment data set out in schedule 4 table S4.2;
 - (c) the performance parameters set out in schedule 4 table S4.3; and
 - (d) the functioning and monitoring of the incineration plant in a format agreed with the Environment Agency. The report shall, as a minimum requirement (as required by Chapter IV of the Industrial Emissions Directive) give an account of the running of the process and the emissions into air and water compared with the emission standards in the IED.
- 4.2.3 Within 28 days of the end of the reporting period the operator shall, unless otherwise agreed in writing by the Environment Agency, submit reports of the monitoring and assessment carried out in accordance with the conditions of this permit, as follows:
- (a) in respect of the parameters and emission points specified in schedule 4 table S4.1;
 - (b) for the reporting periods specified in schedule 4 table S4.1 and using the forms specified in schedule 4 table S4.4; and
 - (c) giving the information from such results and assessments as may be required by the forms specified in those tables.
- 4.2.4 The operator shall, unless notice under this condition has been served within the preceding four years, submit to the Environment Agency, within six months of receipt of a written notice, a report assessing whether there are other appropriate measures that could be taken to prevent, or where that is not practicable, to minimise pollution.
- 4.2.5 Within 1 month of the end of each quarter, the operator shall submit to the Environment Agency using the form made available for the purpose, the information specified on the form relating to the site and the waste accepted and removed from it during the previous quarter.

4.3 Notifications

- 4.3.1 In the event:
- (a) that the operation of the activities gives rise to an incident or accident which significantly affects or may significantly affect the environment, the operator must immediately:
 - (i) inform the Environment Agency,
 - (ii) take the measures necessary to limit the environmental consequences of such an incident or accident, and
 - (iii) take the measures necessary to prevent further possible incidents or accidents;
 - (b) of a breach of any permit condition the operator must immediately:
 - (i) inform the Environment Agency, and
 - (ii) take the measures necessary to ensure that compliance is restored within the shortest possible time;
 - (c) of a breach of permit condition which poses an immediate danger to human health or threatens to cause an immediate significant adverse effect on the environment, the operator must immediately suspend the operation of the activities or the relevant part of it until compliance with the permit conditions has been restored.

- 4.3.2 Any information provided under condition 4.3.1 shall be confirmed by sending the information listed in schedule 5 to this permit within the time period specified in that schedule.
- 4.3.3 Where the Environment Agency has requested in writing that it shall be notified when the operator is to undertake monitoring and/or spot sampling, the operator shall inform the Environment Agency when the relevant monitoring and/or spot sampling is to take place. The operator shall provide this information to the Environment Agency at least 14 days before the date the monitoring is to be undertaken.
- 4.3.4 The Environment Agency shall be notified within 14 days of the occurrence of the following matters, except where such disclosure is prohibited by Stock Exchange rules:
- Where the operator is a registered company:
- (a) any change in the operator's trading name, registered name or registered office address; and
 - (b) any steps taken with a view to the operator going into administration, entering into a company voluntary arrangement or being wound up.
- Where the operator is a corporate body other than a registered company:
- (a) any change in the operator's name or address; and
 - (b) any steps taken with a view to the dissolution of the operator.
- In any other case:
- (a) the death of any of the named operators (where the operator consists of more than one named individual);
 - (b) any change in the operator's name(s) or address(es); and
 - (c) any steps taken with a view to the operator, or any one of them, going into bankruptcy, entering into a composition or arrangement with creditors, or, in the case of them being in a partnership, dissolving the partnership.
- 4.3.5 Where the operator proposes to make a change in the nature or functioning, or an extension of the activities, which may have consequences for the environment and the change is not otherwise the subject of an application for approval under the Regulations or this permit:
- (a) the Environment Agency shall be notified at least 14 days before making the change; and
 - (b) the notification shall contain a description of the proposed change in operation.
- 4.3.6 The Environment Agency shall be given at least 14 days' notice before implementation of any part of the site closure plan.

4.4 Interpretation

- 4.4.1 In this permit the expressions listed in schedule 6 shall have the meaning given in that schedule.
- 4.4.2 In this permit references to reports and notifications mean written reports and notifications, except where reference is made to notification being made "immediately" in which case it may be provided by telephone.

Schedule 1 – Operations

| Table S1.1 activities | | | |
|-------------------------------------|--|--|---|
| Activity reference | Activity listed in Schedule 1 of the EP Regulations | Description of specified activity | Limits of specified activity |
| AR1 | S5.1 A1 (b) | The incineration of non-hazardous waste in a waste incineration plant with a capacity of 3 tonnes per hour or more. | Feedstock management, combustion operations, gas cleaning and discharge. From receipt of waste to emission of exhaust gas and removal from site of waste arising. Waste types and quantities as specified in Table S2.2 of this permit. |
| Directly Associated Activity | | | |
| AR2 | Production of steam for generation of electricity and off-site use | Steam generation, turbine generator operation. Generation of 10 MWe electrical power using a steam turbine from energy recovered from the flue gases. Output of electricity to grid. Discharge of steam off-site. | |
| AR3 | Back up electrical generator | For providing emergency electrical power to the plant in the event of supply interruption. | |

| Table S1.2 Operating techniques | | |
|--|---|-------------------------------|
| Description | Parts | Date Received |
| Application EPR/BJ6178IX/A001 | The response to questions 2.3 given in sections 2.24 to 2.91 on pages 20 to 32 | 22/12/2000 |
| Application for variation EPR/BJ6178IX/V002 | The response to questions in section C2.1, C2.2, C2.7 and C2.10 of the Application for the variation | 31/03/2005 |
| Application for variation EPR/BJ6178IX/V005 | Report issue form part 2. Minor technical variation | 23/06/2011 |
| Response to improvement condition IC1 | Operating techniques as set out in improvement condition response as approved by the Environment Agency | Date IC1 response is received |

| Table S1.3 Improvement programme requirements | | |
|--|---|---|
| Reference | Requirement | Date |
| IC1 | <p>The operator shall submit a report to the Environment Agency for approval (using the form provided by the Environment Agency) that addresses compliance with each BAT conclusion. The report shall include:</p> <ol style="list-style-type: none"> i. If any BAT conclusion is not relevant explain why ii. Whether and how the installation complies with the standards in set out in each BAT conclusion iii. If the installation does not currently comply with a standard set in a BAT conclusion describe how and when the installation will comply with that standard. iv. If the installation will continue operating in a manner which would not comply with a BAT Conclusion, after 03/12/2023 the operator shall submit to the Environment Agency: <ul style="list-style-type: none"> • a justification for being allowed to do so • a description of alternative measures to be adopted that will provide equivalent environmental protection | 3 months from issue of variation notice |
| IC2 | The operator shall submit a report to the Environment Agency on whether waste feed to the plant can be proven to have a low and stable mercury content. The report shall have regard to BAT 4 of the BAT conclusions, be based on historic mercury emissions monitoring data and have regard to the Environment Agency Mercury Monitoring Protocol. | 30/09/23 |
| IC3 | The operator shall submit a report to the Environment Agency on whether dioxin emissions to air are stable. The report shall have regard to BAT 4 of the BAT conclusions, be based on historic dioxin emissions monitoring data and have regard to the Environment Agency Dioxins Monitoring Protocol. | 30/09/23 |
| IC4 | <p>The operator shall perform a study to determine the extent to which the operation of the current systems in place at the plant to minimise NOx emissions can be further optimised such that emissions are reduced as far as possible below 180 mg/Nm³ as a daily average, without significantly increasing emissions of other pollutants or having a significant negative effect on plant operation, reliability or bottom ash quality. The study shall be based on the results of trials carried out at the installation and shall have regard to the recommendations for test conditions set out in Section 5.4.3 of report titled 'Establishing factors that influence NOx reduction at waste incineration plant to levels below the upper end of the BAT-AELs' (dated 14/01/2022), or other methodology agreed in writing with the Environment Agency. A written report of the study shall be submitted to the Environment Agency which shall include but not necessarily be limited to the following:</p> <ul style="list-style-type: none"> • A brief description of the currently installed measures at the installation to minimise NOx emissions, including details of how the reagent dosing system responds to emissions monitoring data and historic data which illustrates the current achievable level of daily NOx emissions. • The results of trials conducted to further reduce daily average NOx emissions using currently installed measures, including: <ul style="list-style-type: none"> ○ a description of the parameters that were varied during the trial e.g. ammonia or urea feed rates, physical form of urea | 30/09/23 |

| Table S1.3 Improvement programme requirements | | |
|---|---|--|
| Reference | Requirement | Date |
| | <p>injected, air flows, and the range over which they were varied</p> <ul style="list-style-type: none"> ○ the levels of NOx achieved and associated levels of ammonia and nitrous oxide emissions and reagent consumption ○ observed effects and predicted long-term impacts on plant operation, reliability and maintenance regime ○ any changes to the composition of the bottom ash and boiler ash and the implications of those changes for the ability to process and use the ash, as well as for the pollution potential of the ash both during processing and its subsequent use as a secondary aggregate ○ any other relevant cross-media effects <p>The report shall also include a description of the extent to which current systems in place at the plant to minimise NOx emissions can be optimised on a permanent basis, including justification and an implementation plan where relevant.</p> | |
| IC5 | <p>Where the response to IC1 shows that the energy efficiency will be below the bottom of the BAT-AEEL range specified in BAT 20 after 02/12/2023 the operator shall carry out an assessment of the opportunities to increase the energy efficiency of the installation.</p> <p>The assessment shall include but not necessarily be limited to:</p> <ul style="list-style-type: none"> • Improvements that could be made to the furnace (including control systems) in order to increase the amount of thermal energy produced per unit of thermal energy in the waste. • Improvements that could be made to the steam system and related components to allow a greater quantity of electricity to be generated per unit of thermal energy in the steam. • Improvements in the heat and electrical efficiency of the plant's ancillary systems that could be made in order to reduce the parasitic heat and electrical loads of the plant. • Where relevant, an implementation plan for the improvements identified, including the anticipated increase in the gross and/or net electrical efficiency of the plant which would be achieved. <p>A written copy of the assessment shall be submitted to the Environment Agency.</p> | 12 months from issue of variation notice |

Schedule 2 – Waste types, raw materials and fuels

| Raw materials and fuel description | Specification |
|------------------------------------|------------------------|
| Fuel Oil | < 0.1% sulphur content |

| Maximum quantity | 150,000 tonnes per year |
|------------------|--|
| Waste code | Description |
| 02 | Wastes from agriculture, horticulture, aquaculture, forestry, hunting and fishing, food preparation and processing |
| 02 03 | Wastes from fruit, vegetables, cereals, edible oils, cocoa, coffee, tea and tobacco preparation and processing; conserve production; yeast and yeast extract production, molasses preparation and fermentation |
| 02 03 04 | Materials unsuitable for consumption or processing |
| 03 | Wastes from pulp, paper and cardboard production and processing |
| 03 03 | Wastes from pulp, paper and cardboard production and processing |
| 03 03 01 | Waste bark and wood |
| 03 03 07 | Mechanically separated rejects from pulping of waste paper and cardboard |
| 03 03 08 | Wastes from sorting of paper and cardboard destined for recycling |
| 04 | Wastes from the leather, fur and textile industries |
| 04 02 | Wastes from the textile industry |
| 04 02 09 | Wastes from composite materials (impregnated textile, elastomer, plastomer) |
| 04 02 10 | Organic matter from natural products (for example grease, wax) |
| 04 02 21 | Wastes from unprocessed fibres |
| 04 02 22 | Wastes from processed fibres |
| 18 | Wastes from human and animal health care and/or related research (except kitchen and restaurant wastes not arising from immediate health care) |
| 18 01 | Wastes from natal care, diagnosis, treatment or prevention of disease in humans |
| 18 01 04 | Wastes whose collection and disposal is not subject to special requirements in order to prevent infection (for example dressings, plaster casts, linen, disposable clothing, diapers) |
| 18 01 09 | Medicines other than those mentioned in 18 01 08 |
| 19 | Wastes from waste management facilities, off-site waste water treatment plants and the preparation of water intended for human consumption and water for industrial use |
| 19 02 | Wastes from physico/chemical treatments of waste (including dechromatation, decyanidation, neutralisation) |
| 19 02 03 | Premixed wastes composed only of non-hazardous wastes |
| 19 02 99 | Wastes not otherwise specified |
| 19 05 | Wastes from aerobic treatment of solid wastes |
| 19 05 03 | Off specification compost |
| 19 08 | Wastes from waste water treatment plants not otherwise specified |

| Table S2.2 Permitted waste types and quantities for incineration plant | |
|---|--|
| Maximum quantity | 150,000 tonnes per year |
| Waste code | Description |
| 19 08 14 | Sludges from other treatment of industrial waste water other than those mentioned in 19 08 13 |
| 19 12 | Wastes from the mechanical treatment of waste (for example sorting, crushing, compacting, pelletising) not otherwise specified |
| 19 12 12 | Other wastes (including mixtures of materials) from mechanical treatment of wastes other than those mentioned in 19 12 11 |
| 20 | Municipal wastes (household waste and similar commercial, industrial and institutional wastes) including separately collected fractions |
| 20 01 | Separately collected fractions (except 15 01) |
| 20 01 01 | Paper and cardboard |
| 20 01 08 | Biodegradable kitchen and canteen waste |
| 20 01 10 | Clothes |
| 20 01 11 | Textiles |
| 20 01 25 | Edible oil and fat |
| 20 01 28 | Paints, inks, adhesives and resins other than those mentioned in 20 01 27 |
| 20 01 30 | Detergents other than those mentioned in 20 01 29 |
| 20 01 32 | Medicines other than those mentioned in 20 01 31 |
| 20 01 36 | Discarded electrical and electronic equipment other than those mentioned in 20 01 21, 20 01 23 and 20 01 35 |
| 20 01 38 | Wood other than that mentioned in 20 01 37 |
| 20 01 39 | Plastics |
| 20 01 40 | Metals |
| 20 02 | Garden and park wastes (including cemetery waste) |
| 20 02 01 | Biodegradable waste |
| 20 03 | Other municipal wastes |
| 20 03 01 | Mixed municipal waste |
| 20 03 02 | Waste from markets |
| 20 03 03 | Street-cleaning residues |
| 20 03 07 | Bulky waste |
| 20 03 99 | Municipal wastes not otherwise specified |

Schedule 3 – Emissions and monitoring

| Table S3.1 Point source emissions to air – emission limits and monitoring requirements. | | | | | | |
|---|----------------------------|----------------------------|--|--|----------------------|---|
| Emission point ref. & location | Parameter | Source | Limit (including unit) | Reference period | Monitoring frequency | Monitoring standard(s) or method(s) |
| A1 as shown on site plan in Schedule 7 | Particulate matter | Incineration exhaust gases | 30 mg/m ³ | ½-hr average | Continuous | EN 14181 |
| A1 as shown on site plan in Schedule 7 | Particulate matter | Incineration exhaust gases | 10 mg/m ³ Until 02/12/2023 | daily average | Continuous | EN 14181 |
| | | | 5 mg/m ³ from 03/12/2023 | | | |
| A1 as shown on site plan in Schedule 7 | Total Organic Carbon (TOC) | Incineration exhaust gases | 20 mg/m ³ | ½-hr average | Continuous | EN 14181 |
| A1 as shown on site plan in Schedule 7 | Total Organic Carbon (TOC) | Incineration exhaust gases | 10 mg/m ³ | daily average | Continuous | EN 14181 |
| A1 as shown on site plan in Schedule 7 | Hydrogen chloride | Incineration exhaust gases | 60 mg/m ³ | ½-hr average | Continuous | EN 14181 |
| A1 as shown on site plan in Schedule 7 | Hydrogen chloride | Incineration exhaust gases | 10 mg/m ³ Until 02/12/2023 | daily average | Continuous | EN 14181 |
| | | | 8 mg/m ³ from 03/12/2023 | | | |
| A1 as shown on site plan in Schedule 7 | Hydrogen fluoride | Incineration exhaust gases | 2 mg/m ³ until 02/12/2023 | Average of three consecutive measurements of | Bi-annually | CEN TS 17340 [BS ISO 15713 can be used until 01/03/22] |

| Table S3.1 Point source emissions to air – emission limits and monitoring requirements. | | | | | | |
|--|---|----------------------------|---|---|-----------------------------|--|
| Emission point ref. & location | Parameter | Source | Limit (including unit) | Reference period | Monitoring frequency | Monitoring standard(s) or method(s) |
| | | | 1 mg/m ³ from 03/12/2023 | at least 30 minutes each | | |
| A1 as shown on site plan in Schedule 7 | Carbon monoxide | Incineration exhaust gases | 150 mg/m ³ | 95% of all 10-minute averages in any 24-hour period | Continuous | EN 14181 |
| A1 as shown on site plan in Schedule 7 | Carbon monoxide | Incineration exhaust gases | 50 mg/m ³ | daily average | Continuous | EN 14181 |
| A1 as shown on site plan in Schedule 7 | Sulphur dioxide | Incineration exhaust gases | 200 mg/m ³ | ½-hr average | Continuous | EN 14181 |
| A1 as shown on site plan in Schedule 7 | Sulphur dioxide | Incineration exhaust gases | 50 mg/m ³ Until 02/12/2023 40 mg/m ³ from 03/12/2023 | daily average | Continuous | EN 14181 |
| A1 as shown on site plan in Schedule 7 | Oxides of nitrogen (NO and NO ₂ expressed as NO ₂) | Incineration exhaust gases | 400 mg/m ³ | ½-hr average | Continuous | EN 14181 |
| A1 as shown on site plan in Schedule 7 | Oxides of nitrogen (NO and NO ₂ expressed as NO ₂) | Incineration exhaust gases | 200 mg/m ³ Until 02/12/2023 180 mg/m ³ from 03/12/2023 | daily average | Continuous | EN 14181 |
| | Cadmium & thallium and their compounds (total) | | 0.05 until 02/12/2023 | Average of three consecutive | Bi-annually | BS EN 14385 |

| Table S3.1 Point source emissions to air – emission limits and monitoring requirements. | | | | | | |
|--|---------------------------|----------------------------|--|---|--|--|
| Emission point ref. & location | Parameter | Source | Limit (including unit) | Reference period | Monitoring frequency | Monitoring standard(s) or method(s) |
| A1 as shown on site plan in Schedule 7 | | Incineration exhaust gases | 0.02 mg/m ³ from 03/12/2023 | measurements of at least 30 minutes each | | |
| A1 as shown on site plan in Schedule 7 | Mercury and its compounds | Incineration exhaust gases | 0.05 mg/m ³ until 02/12/2023 | Average of three consecutive measurements of at least 30 minutes each | Bi-annually until 02/12/2023 | BS EN 13211 |
| A1 as shown on site plan in Schedule 7 | Mercury and its compounds | Incineration exhaust gases | 0.02 mg/m ³ from 03/12/2023 Limit does not apply if continuous monitoring has been specified in writing by the Environment Agency | Average of three consecutive measurements of at least 30 minutes each | Bi-annually from 03/12/2023 Not required if continuous monitoring has been specified in writing by the Environment Agency | BS EN 13211 |
| A1 as shown on site plan in Schedule 7 | Mercury and its compounds | Incineration exhaust gases | 0.02 mg/m ³ from 03/12/2023 | Daily average | Continuous from 03/12/2023 Not required unless continuous monitoring has been specified in writing by the Environment Agency in line with sampling protocol | EN 14181 |
| | | | 0.5 mg/m ³ Until 02/12/2023 | Average of three consecutive | Bi-annually | BS EN 14385 |

| Table S3.1 Point source emissions to air – emission limits and monitoring requirements. | | | | | | |
|--|--|----------------------------|--|---|------------------------------|--|
| Emission point ref. & location | Parameter | Source | Limit (including unit) | Reference period | Monitoring frequency | Monitoring standard(s) or method(s) |
| A1 as shown on site plan in Schedule 7 | Sb, As, Pb, Cr, Co, Cu, Mn, Ni and V and their compounds (total) | Incineration exhaust gases | 0.3 mg/m ³ from 03/12/2023 | measurements of at least 30 minutes each | | |
| A1 as shown on site plan in Schedule 7 | Exhaust gas temperature | Incineration exhaust gases | No limit set | - | Continuous | Traceable to national standards |
| A1 as shown on site plan in Schedule 7 | Exhaust gas pressure | Incineration exhaust gases | No limit set | - | Continuous | Traceable to national standards |
| A1 as shown on site plan in Schedule 7 | Exhaust gas flow | Incineration exhaust gases | No limit set | - | Continuous from 01/01/2023 | BS EN 16911-2 |
| A1 as shown on site plan in Schedule 7 | Exhaust gas oxygen content | Incineration exhaust gases | No limit set | - | Continuous | EN 14181 |
| A1 as shown on site plan in Schedule 7 | Exhaust gas water vapour content | Incineration exhaust gases | No limit set | - | Continuous | EN 14181 |
| A1 as shown on site plan in Schedule 7 | Ammonia (NH ₃) | Incineration exhaust gases | No limit set Until 02/12/2023 | Periodic over minimum 1 hour period Until 02/12/2023 | Biannual Until 02/12/2023 | BS EN 14791 Until 02/12/2023 |
| | | | 15 mg/m ³ from 03/12/2023 | daily average from 03/12/2023 | Continuous from 03/12/2023 | EN 14181 |

| Table S3.1 Point source emissions to air – emission limits and monitoring requirements. | | | | | | |
|--|----------------------------------|----------------------------|--|---|--|---|
| Emission point ref. & location | Parameter | Source | Limit (including unit) | Reference period | Monitoring frequency | Monitoring standard(s) or method(s) |
| A1 as shown on site plan in Schedule 7 | Nitrous oxide (N ₂ O) | Incineration exhaust gases | No limit set | Periodic over minimum 1 hour period Until 01/01/2023 | Biannual Until 01/01/2023 | VDI 2469-1 or VDI 2469-2 Until 02/12/2023 |
| | | | | ½-hr average and daily average from 01/01/2023 | Continuous from 01/01/2023 | EN 14181 |
| A1 as shown on site plan in Schedule 7 | Carbon dioxide | Incineration exhaust gases | No limit set | Continuous | Continuous from 01/01/2023 | EN 14181 |
| A1 as shown on site plan in Schedule 7 | Dioxins / furans (I-TEQ) | Incineration exhaust gases | 0.1 ng/m ³ Until 02/12/2023 | Periodic over minimum 6 hours, maximum 8 hour period | Bi-annually until 02/12/2023 | BS EN 1948 Parts 1, 2 and 3 |
| A1 as shown on site plan in Schedule 7 | Dioxins / furans (I-TEQ) | Incineration exhaust gases | 0.06 ng/m ³ from 03/12/2023 | Periodic over minimum 6 hours, maximum 8 hour period | Bi-annually from 03/12/2023 | EN 1948 Parts 1, 2 and 3 |
| | | | or 0.08 ng/m ³ if long term limit is specified by the Environment | or Value over sampling period of 2 to 4 weeks | or long term sampling if specified by the Environment Agency in line with sampling protocol from 03/12/2023 | or CEN TS 1948-5 if specified by the Environment Agency in |

| Table S3.1 Point source emissions to air – emission limits and monitoring requirements. | | | | | | |
|--|--|----------------------------|---|--|--|---|
| Emission point ref. & location | Parameter | Source | Limit (including unit) | Reference period | Monitoring frequency | Monitoring standard(s) or method(s) |
| | | | Agency in line with sampling protocol from 03/12/2023 | for long term sampling | | line with sampling protocol |
| A1 as shown on site plan in Schedule 7 | Dioxin-like PCBs (WHO-TEQ Humans / Mammals, Fish, Birds) | Incineration exhaust gases | No limit set | Periodic over minimum 6 hours, maximum 8 hour period or Value over sampling period of 2 to 4 weeks for long term sampling 03/12/2023 | Bi-annually or Long term sampling if specified by the Environment Agency in line with sampling protocol from 03/12/2023. No monitoring is required if emissions have been shown to be below 0.01 ng/m ³ as agreed with the Environment Agency. | EN 1948 Parts 1, 2 and 4 or CEN TS 1948-5 if specified by the Environment Agency in line with sampling protocol |
| A1 as shown on site plan in Schedule 7 | Dioxins / furans (WHO-TEQ Humans / Mammals, Fish, Birds) | Incineration exhaust gases | No limit set | Periodic over minimum 6 hours, maximum 8 hour period | Bi-annually | BS EN 1948 Parts 1, 2 and 3 |
| A1 as shown on site plan in Schedule 7 | Polybrominated dibenzodioxins and furans | Incineration exhaust gases | No limit set | Periodic over minimum 6 hours, maximum 8 hour period | Bi-annually from 01/01/2023 | Method based on procedural requirements of EN 1948 |

| Table S3.1 Point source emissions to air – emission limits and monitoring requirements. | | | | | | |
|--|---|-------------------------------------|-------------------------------|--|-----------------------------|--|
| Emission point ref. & location | Parameter | Source | Limit (including unit) | Reference period | Monitoring frequency | Monitoring standard(s) or method(s) |
| A1 as shown on site plan in Schedule 7 | Specific individual poly-cyclic aromatic hydrocarbons (PAHs), as specified in Schedule 6. | Incineration exhaust gases | No limit set | Periodic over minimum 6 hours, maximum 8 hour period | Annually | BS ISO 11338 Parts 1 and 2. |
| A10 as shown on site plan in Schedule 7 | None | Back-up diesel electrical generator | None | None | None | None |

| Table S3.1(a) Point source emissions to air during abnormal operation of incineration plant – emission limits and monitoring requirements | | | | | | |
|--|----------------------------|---------------|-------------------------------|---|-----------------------------|--|
| Emission point ref. & location | Parameter | Source | Limit (including unit) | Reference period | Monitoring frequency | Monitoring standard or method |
| A1 as shown on site plan in Schedule 7 | Particulate matter | | 150 mg/m ³ | ½-hr average | Continuous | EN 14181 or alternative surrogate as agreed in writing with the environment agency during failure of the continuous emission monitor |
| A1 as shown on site plan in Schedule 7 | Total Organic Carbon (TOC) | | 20 mg/m ³ | ½-hr average | Continuous | EN 14181 or alternative surrogate as agreed in writing with the environment agency during failure of the continuous emission monitor |
| A1 as shown on site plan in Schedule 7 | Carbon monoxide | | 150 mg/m ³ | 95% of all 10-minute averages in any 24-hour period | Continuous | EN 14181 or alternative surrogate as agreed in writing with the environment agency during failure of the continuous emission monitor |

| Table S3.2 Point source emissions to sewer, effluent treatment plant or other transfers off-site—emission limits and monitoring requirements | | | | | | |
|---|----------------------------|------------------|---------------------------|-------------------------|-----------------------------|--------------------------------------|
| Emission point ref. & location | Source | Parameter | Limit (incl. Unit) | Reference period | Monitoring frequency | Monitoring standard or method |
| S1 as shown on site plan in Schedule 7 | Boiler blowdown, Rainwater | None | None | None | None | None |

| Table S3.3 Process monitoring requirements | | | | |
|--|-----------------------------|--|--|---------------------------------------|
| Emission point reference or source or description of point of measurement | Parameter | Monitoring frequency | Monitoring standard or method | Other specifications |
| As identified in the Application | Wind Speed and Direction | Continuous | Anemometer | |
| Location close to the Combustion Chamber inner wall or as identified and justified in Application. | Temperature (° C) | Continuous | Traceable to national standards | As agreed in writing with the Agency. |
| Incineration plant | Gross electrical efficiency | within 6 months of any modification that significantly affects energy efficiency | Performance test at full load or other method as agreed in writing with the Environment Agency | |

| Table S3.4 Residue quality | | | | | |
|--|---|--------------|---|--|--|
| Emission point reference or source or description of point of measurement | Parameter | Limit | Monitoring frequency | Monitoring standard or method * | Other specifications |
| Bottom Ash | TOC | 3% | Quarterly | EN 14899 and either EN 13137 or EN 15936 | Environment Agency Guidance, 'TGN M4 – Guidelines for Ash Sampling and Analysis' |
| Bottom Ash | Metals (Antimony, Cadmium, Thallium, Mercury, Lead, Chromium, Copper, Manganese, Nickel, Arsenic, Cobalt, Vanadium, Zinc) and their compounds, dioxins/furans and dioxin-like PCBs. | | Quarterly | Environment Agency Guidance, 'TGN M4 – Guidelines for Ash Sampling and Analysis' | |
| Bottom Ash | Total soluble fraction and metals (Antimony, Cadmium, Thallium, Mercury, Lead, Chromium, Copper, Manganese, Nickel, Arsenic, Cobalt, Vanadium, Zinc) soluble fractions | | Before use of a new disposal or recycling route | Environment Agency Guidance, 'TGN M4 – Guidelines for Ash Sampling and Analysis' | |
| APC Residues | Metals (Antimony, Cadmium, Thallium, Mercury, Lead, Chromium, Copper, Manganese, Nickel, Arsenic, Cobalt, Vanadium, Zinc) and their compounds, dioxins/furans and dioxin-like PCBs. | | Quarterly | Environment Agency Guidance, 'TGN M4 – Guidelines for Ash Sampling and Analysis' | |
| APC Residues | Total soluble fraction and metals (Antimony, Cadmium, Thallium, Mercury, Lead, Chromium, Copper, Manganese, Nickel, Arsenic, Cobalt, Vanadium, Zinc) soluble fractions | | Before use of a new disposal or recycling route | Environment Agency Guidance, 'TGN M4 – Guidelines for Ash Sampling and Analysis' | |

* Or other equivalent standard as agreed in writing with the Environment Agency.

Schedule 4 – Reporting

Parameters, for which reports shall be made, in accordance with conditions of this permit, are listed below.

| Table S4.1 Reporting of monitoring data | | | |
|---|---|---|-------------------------------|
| Parameter | Emission or monitoring point/reference | Reporting period | Period begins |
| Emissions to air Parameters as required by condition 3.6.1 | A1 | Quarterly | 1 Jan, 1 Apr, 1 Jul and 1 Oct |
| TOC Parameters as required by condition 3.6.1 | Bottom Ash | Quarterly | 1 Jan, 1 Apr, 1 Jul and 1 Oct |
| Metals (Antimony, Cadmium, Thallium, Mercury, Lead, Chromium, Copper, Manganese, Nickel, Arsenic, Cobalt, Vanadium, Zinc) and their compounds, dioxins/furans and dioxin-like PCBs Parameters as required by condition 3.6.1 | Bottom Ash | Quarterly | 1 Jan, 1 Apr, 1 Jul and 1 Oct |
| Total soluble fraction and metals (Antimony, Cadmium, Thallium, Mercury, Lead, Chromium, Copper, Manganese, Nickel, Arsenic, Cobalt, Vanadium, Zinc) soluble fractions Parameters as required by condition 3.6.1 | Bottom Ash | Before use of a new disposal or recycling route | |
| Metals (Antimony, Cadmium, Thallium, Mercury, Lead, Chromium, Copper, Manganese, Nickel, Arsenic, Cobalt, Vanadium, Zinc) and their compounds, dioxins/furans and dioxin-like PCBs Parameters as required by condition 3.6.1 | APC Residues | Quarterly | 1 Jan, 1 Apr, 1 Jul and 1 Oct |
| Total soluble fraction and metals (Antimony, Cadmium, Thallium, Mercury, Lead, Chromium, Copper, Manganese, Nickel, Arsenic, Cobalt, Vanadium, Zinc) soluble fractions Parameters as required by condition 3.6.1 | APC Residues | Before use of a new disposal or recycling route | |

| Table S4.2: Annual production/treatment | |
|--|--------------|
| Parameter | Units |
| Total Municipal Waste Incinerated | tonnes |
| Total Commercial Waste Incinerated | tonnes |
| Electrical energy produced | KWh |

| Parameter | Units |
|---|-------|
| Thermal energy produced e.g. steam for export | KWh |
| Electrical energy exported | KWh |
| Electrical energy used on installation | KWh |
| Waste heat utilised by the installation | KWh |

| Parameter | Frequency of assessment | Units |
|---|-------------------------|---|
| Annual Report as required by condition 4.2.2 | Annually | - |
| Electrical energy exported, imported and used at the installation | Annually | KWh / tonne of waste incinerated |
| Fuel oil consumption | Annually | Kg / tonne of waste incinerated |
| Bottom Ash residue | Annually | Route, tonnes and tonnes / tonne of waste incinerated |
| APC residue | Annually | Route, tonnes and tonnes / tonne of waste incinerated |
| Other solid residues | Annually | Route, tonnes and tonnes / tonne of waste incinerated |
| Ammonia / Urea consumption | Annually | Kg / tonne of waste incinerated |
| Activated Carbon consumption | Annually | Kg / tonne of waste incinerated |
| Lime consumption | Annually | Kg / tonne of waste incinerated |
| Water consumption | Annually | Kg / tonne of waste incinerated |
| Periods of abnormal operation | Annually | No of occasions and cumulative hours for current calendar year for each line. |

| Media/parameter | Reporting format | Date of form |
|---|--|---------------|
| Annual report required by condition 4.2.2 | Annual performance report template | November 2019 |
| Air: Periodic monitored emissions biannually ^{Note 1} | Agency Form /BJ6178IX/ A1 / 01 July 2008 | 01/07/2008 |
| Air: Continuously monitored emissions of particulates ^{Note 1} | Agency Form / BJ6178IX / A3 / 24 November 2005 | 24/11/2005 |

| Table S4.4 Reporting forms | | |
|---|---|---------------------|
| Media/parameter | Reporting format | Date of form |
| Air: Continuously monitored emissions of Hydrogen chloride ^{Note 1} | Agency Form / BJ6178IX / A5 / 24 November 2005 | 24/11/2005 |
| Air: Continuously monitored emissions of TOC ^{Note 1} | Agency Form / BJ6178IX / A4 / 24 November 2005 | 24/11/2005 |
| Air: Continuously monitored emissions of Carbon monoxide ^{Note 1} | Agency Form / BJ6178IX / A6 / 24 November 2005 | 24/11/2005 |
| Air: Continuously monitored emissions of Sulphur dioxide ^{Note 1} | Agency Form / BJ6178IX / A7 / 24 November 2005 | 24/11/2005 |
| Air: Continuously monitored emissions of Oxides of nitrogen ^{Note 1} | Agency Form / BJ6178IX / A8 / 24 November 2005 | 24/11/2005 |
| Emissions to air from 03/12/2023 | Forms air 1-9 or other forms as agreed in writing by the Environment Agency | 18/05/2022 |
| Residue quality | Form residue 1 and 2 or other form as agreed in writing by the Environment Agency | 18/05/2022 |
| Other performance indicators | Form performance 1 or other form as agreed in writing by the Environment Agency | 18/05/2022 |
| Note 1: Until 02/12/2023 | | |

Schedule 5 – Notification

These pages outline the information that the operator must provide.

Units of measurement used in information supplied under Part A and B requirements shall be appropriate to the circumstances of the emission. Where appropriate, a comparison should be made of actual emissions and authorised emission limits.

If any information is considered commercially confidential, it should be separated from non-confidential information, supplied on a separate sheet and accompanied by an application for commercial confidentiality under the provisions of the EP Regulations.

Part A

| | |
|--------------------------------|--|
| Permit Number | |
| Name of operator | |
| Location of Facility | |
| Time and date of the detection | |

| | |
|---|--|
| (a) Notification requirements for any malfunction, breakdown or failure of equipment or techniques, accident, or emission of a substance not controlled by an emission limit which has caused, is causing or may cause significant pollution | |
| To be notified within 24 hours of detection | |
| Date and time of the event | |
| Reference or description of the location of the event | |
| Description of where any release into the environment took place | |
| Substances(s) potentially released | |
| Best estimate of the quantity or rate of release of substances | |
| Measures taken, or intended to be taken, to stop any emission | |
| Description of the failure or accident. | |

| | |
|---|--|
| (b) Notification requirements for the breach of a limit | |
| To be notified within 24 hours of detection unless otherwise specified below | |
| Emission point reference/ source | |
| Parameter(s) | |
| Limit | |
| Measured value and uncertainty | |
| Date and time of monitoring | |

| | |
|---|--|
| (b) Notification requirements for the breach of a limit | |
| To be notified within 24 hours of detection unless otherwise specified below | |
| Measures taken, or intended to be taken, to stop the emission | |

| | |
|---|----------------------------|
| Time periods for notification following detection of a breach of a limit | |
| Parameter | Notification period |
| | |
| | |
| | |

| | |
|--|--|
| (c) Notification requirements for the breach of permit conditions not related to limits | |
| To be notified within 24 hours of detection | |
| Condition breached | |
| Date, time and duration of breach | |
| Details of the permit breach i.e. what happened including impacts observed. | |
| Measures taken, or intended to be taken, to restore permit compliance. | |

| | |
|--|--|
| (d) Notification requirements for the detection of any significant adverse environmental effect | |
| To be notified within 24 hours of detection | |
| Description of where the effect on the environment was detected | |
| Substances(s) detected | |
| Concentrations of substances detected | |
| Date of monitoring/sampling | |

| | |
|--|--|
| (c) Notification requirements for the detection of any significant adverse environmental effect | |
| To be notified within 24 hours of detection | |
| Description of where the effect on the environment was detected | |
| Substances(s) detected | |
| Concentrations of substances detected | |
| Date of monitoring/sampling | |

Part B – to be submitted as soon as practicable

| | |
|--|--|
| Any more accurate information on the matters for notification under Part A. | |
| Measures taken, or intended to be taken, to prevent a recurrence of the incident | |
| Measures taken, or intended to be taken, to rectify, limit or prevent any pollution of the environment which has been or may be caused by the emission | |
| The dates of any unauthorised emissions from the facility in the preceding 24 months. | |

| | |
|-----------|--|
| Name* | |
| Post | |
| Signature | |
| Date | |

* authorised to sign on behalf of the operator

Schedule 6 – Interpretation

“abatement equipment” means that equipment dedicated to the removal of polluting substances from releases from the installation to air or water media.

“*abnormal operation*” means: any technically unavoidable stoppages, disturbances, or failures of the plant or the measurement devices. Abnormal operation starts as defined in condition 2.3.12 and ends as defined in condition 2.3.13. Abnormal operation is limited to 4 hours for a single occurrence and a total of 60 hours per year per line.

“accident” means an accident that may result in pollution.

“APC residues” means air pollution control residues

“application” means the application for this permit, together with any additional information supplied by the operator as part of the application and any response to a notice served under Schedule 5 to the EP Regulations.

“authorised officer” means any person authorised by the Environment Agency under section 108(1) of The Environment Act 1995 to exercise, in accordance with the terms of any such authorisation, any power specified in section 108(4) of that Act.

“BAT conclusions” means Commission Implementing Decision (EU) 2019/2010 of 12 November 2019 establishing the best available techniques (BAT) conclusions, under Directive 2010/75/EU of the European Parliament and of the Council, for Waste Incineration.

“bottom ash” means ash transported by the grate.

“CEM” Continuous emission monitor.

“CEN” means Comité Européen de Normalisation.

“bi-annual” means twice per year with at least five months between tests.

“Commissioning” means testing of the new incineration plant that involves any operation of the furnace.

Daily average emissions value means ‘the average of at least 43 valid half hourly averages or for CO the average of at least 43 valid half hourly averages or 129 valid 10 min averages’

“dioxin and furans” means polychlorinated dibenzo-p-dioxins and polychlorinated dibenzofurans.

“disposal”. Means any of the operations provided for in Annex I to Directive 2008/98/EC of the European Parliament and of the Council on waste.

“emissions to land” includes emissions to groundwater.

“EP Regulations” means The Environmental Permitting (England and Wales) Regulations SI 2016 No.1154 and words and expressions used in this permit which are also used in the Regulations have the same meanings as in those Regulations.

“emissions of substances not controlled by emission limits” means emissions of substances to air, water or land from the activities, either from the emission points specified in schedule 3 or from other localised or diffuse sources, which are not controlled by an emission limit.

“groundwater” means all water, which is below the surface of the ground in the saturation zone and in direct contact with the ground or subsoil.

‘*Hazardous property*’ has the meaning in Annex III of the Waste Framework Directive

“incineration line” means all of the incineration equipment related to a common discharge to air location.

“Industrial Emissions Directive” means DIRECTIVE 2010/75/EU OF THE EUROPEAN PARLIAMENT AND OF THE COUNCIL of 24 November 2010 on industrial emissions

“ISO” means International Standards Organisation.

'*List of Wastes*' means the list of wastes established by Commission Decision 2000/532/EC replacing Decision 94/3/EC establishing a list of wastes pursuant to Article 1(a) of Council Directive 75/442/EEC on waste and Council Decision 94/904/EC establishing a list of hazardous waste pursuant to Article 1(4) of Council Directive 91/689/EEC on hazardous waste, as amended from time to time

"LOI" means loss on ignition a technique used to determine the combustible material by heating the ash residue to a high temperature

"MCERTS" means the Environment Agency's Monitoring Certification Scheme.

"PAH" means Poly-cyclic aromatic hydrocarbon, and comprises Anthanthrene, Benzo[a]anthracene, Benzo[b]fluoranthene, Benzo[k]fluoranthene, Benzo[b]naph(2,1-d)thiophene, Benzo[c]phenanthrene, Benzo[ghi]perylene, Benzo[a]pyrene, Cholanthrene, Chrysene, Cyclopenta[c,d]pyrene, Dibenz[ah]anthracene, Dibenz[a,i]pyrene Fluoranthene, Indo[1,2,3-cd]pyrene, Naphthalene

"PCB" means Polychlorinated Biphenyl. Dioxin-like PCBs are the non-ortho and mono-ortho PCBs listed in the table below.

"Pests" means Birds, Vermin and Insects.

"quarter" means a calendar year quarter commencing on 1 January, 1 April, 1 July or 1 October.

"recovery" means any of the operations provided for in Annex II to Directive 2008/98/EC of the European Parliament and of the Council on waste.

"start up" is any period, where the plant has been non-operational, until waste has been fed to the plant in a sufficient quantity to initiate steady-state conditions as described in the application or agreed in writing with the Environment Agency.

"shut down" is any period where the plant is being returned to a non-operational state as described in the application or agreed in writing with the Environment Agency.

"TOC" means Total Organic Carbon. In respect of releases to air, this means the gaseous and vaporous organic substances, expressed as TOC.

'*Waste code*' means the six digit code referable to a type of waste in accordance with the List of Wastes and in relation to hazardous waste, includes the asterisk

"Waste Framework Directive" or "WFD" means Waste Framework Directive 2008/98/EC of the European Parliament and of the Council on waste

Where a minimum limit is set for any emission parameter, for example pH, reference to exceeding the limit shall mean that the parameter shall not be less than that limit.

Unless otherwise stated, any references in this permit to concentrations of substances in emissions into air means:

(a) in relation to gases from incineration plants other than those burning waste oil, the concentration in dry air at a temperature of 273K, at a pressure of 101.3 kPa and with an oxygen content of 11% dry.

For dioxins/furans and dioxin-like PCBs the determination of the toxic equivalence concentration (I-TEQ, & WHO-TEQ for dioxins/furans, WHO-TEQ for dioxin-like PCBs) stated as a release limit and/ or reporting requirement, the mass concentrations of the following congeners have to be multiplied with their respective toxic equivalence factors before summing. When reporting on measurements of dioxins/furans and dioxin-like PCBs, the toxic equivalence concentrations should be reported as a range based on: all congeners less than the detection limit assumed to be zero as a minimum, and all congeners less than the detection limit assumed to be at the detection limit as a maximum. However the minimum value should be used when assessing compliance with the emission limit value in table S3.1.

| TEF schemes for dioxins and furans | | | | |
|------------------------------------|-------|------------------|--------|--------|
| Congener | I-TEF | WHO-TEF | | |
| | 1990 | 2005 | 1997/8 | |
| | | Humans / Mammals | Fish | Birds |
| Dioxins | | | | |
| 2,3,7,8-TCDD | 1 | 1 | 1 | 1 |
| 1,2,3,7,8-PeCDD | 0.5 | 1 | 1 | 1 |
| 1,2,3,4,7,8-HxCDD | 0.1 | 0.1 | 0.5 | 0.05 |
| 1,2,3,6,7,8-HxCDD | 0.1 | 0.1 | 0.01 | 0.01 |
| 1,2,3,7,8,9-HxCDD | 0.1 | 0.1 | 0.01 | 0.1 |
| 1,2,3,4,6,7,8-HpCDD | 0.01 | 0.01 | 0.001 | <0.001 |
| OCDD | 0.001 | 0.0003 | - | - |
| Furans | | | | |
| 2,3,7,8-TCDF | 0.1 | 0.1 | 0.05 | 1 |
| 1,2,3,7,8-PeCDF | 0.05 | 0.03 | 0.05 | 0.1 |
| 2,3,4,7,8-PeCDF | 0.5 | 0.3 | 0.5 | 1 |
| 1,2,3,4,7,8-HxCDF | 0.1 | 0.1 | 0.1 | 0.1 |
| 1,2,3,7,8,9-HxCDF | 0.1 | 0.1 | 0.1 | 0.1 |
| 1,2,3,6,7,8-HxCDF | 0.1 | 0.1 | 0.1 | 0.1 |
| 2,3,4,6,7,8-HxCDF | 0.1 | 0.1 | 0.1 | 0.1 |
| 1,2,3,4,6,7,8_HpCDF | 0.01 | 0.01 | 0.01 | 0.01 |
| 1,2,3,4,7,8,9-HpCDF | 0.01 | 0.01 | 0.01 | 0.01 |
| OCDF | 0.001 | 0.0003 | 0.0001 | 0.0001 |

| TEF schemes for dioxin-like PCBs | | | |
|----------------------------------|------------------|-----------|--------|
| Congener | WHO-TEF | | |
| | 2005 | 1997/8 | |
| | Humans / mammals | Fish | Birds |
| Non-ortho PCBs | | | |
| 3,4,4',5-TCB (81) | 0.0001 | 0.0005 | 0.1 |
| 3,3',4,4'-TCB (77) | 0.0003 | 0.0001 | 0.05 |
| 3,3',4,4',5 - PeCB (126) | 0.1 | 0.005 | 0.1 |
| 3,3',4,4',5,5'-HxCB(169) | 0.03 | 0.00005 | 0.001 |
| Mono-ortho PCBs | | | |
| 2,3,3',4,4'-PeCB (105) | 0.00003 | <0.000005 | 0.0001 |
| 2,3,4,4',5-PeCB (114) | 0.00003 | <0.000005 | 0.0001 |

| TEF schemes for dioxin-like PCBs | | | |
|----------------------------------|------------------|-----------|---------|
| Congener | WHO-TEF | | |
| | 2005 | 1997/8 | |
| | Humans / mammals | Fish | Birds |
| 2,3',4,4',5-PeCB (118) | 0.00003 | <0.000005 | 0.00001 |
| 2',3,4,4',5-PeCB (123) | 0.00003 | <0.000005 | 0.00001 |
| 2,3,3',4,4',5-HxCB (156) | 0.00003 | <0.000005 | 0.0001 |
| 2,3,3',4,4',5'-HxCB (157) | 0.00003 | <0.000005 | 0.0001 |
| 2,3',4,4',5,5'-HxCB (167) | 0.00003 | <0.000005 | 0.00001 |
| 2,3,3',4,4',5,5'-HpCB (189) | 0.00003 | <0.000005 | 0.00001 |

“year” means calendar year ending 31 December.

When the following terms appear in the waste code list in Schedule 2, table 2.2, for that table, they have the meaning given below:

‘hazardous substance’ means a substance classified as hazardous as a consequence of fulfilling the criteria laid down in parts 2 to 5 of Annex I to Regulation (EC) No 1272/2008

‘heavy metal’ means any compound of antimony, arsenic, cadmium, chromium (VI), copper, lead, mercury, nickel, selenium, tellurium, thallium and tin, as well as these materials in metallic form, as far as these are classified as hazardous substances

‘PCBs’ means

- polychlorinated biphenyls
- polychlorinated terphenyls
- monomethyl-tetrachlorodiphenyl methane, Monomethyl-dichloro-diphenyl methane, Monomethyldibromo-diphenyl methane
- any mixture containing any of the above mentioned substances in a total of more than 0,005 %by weight

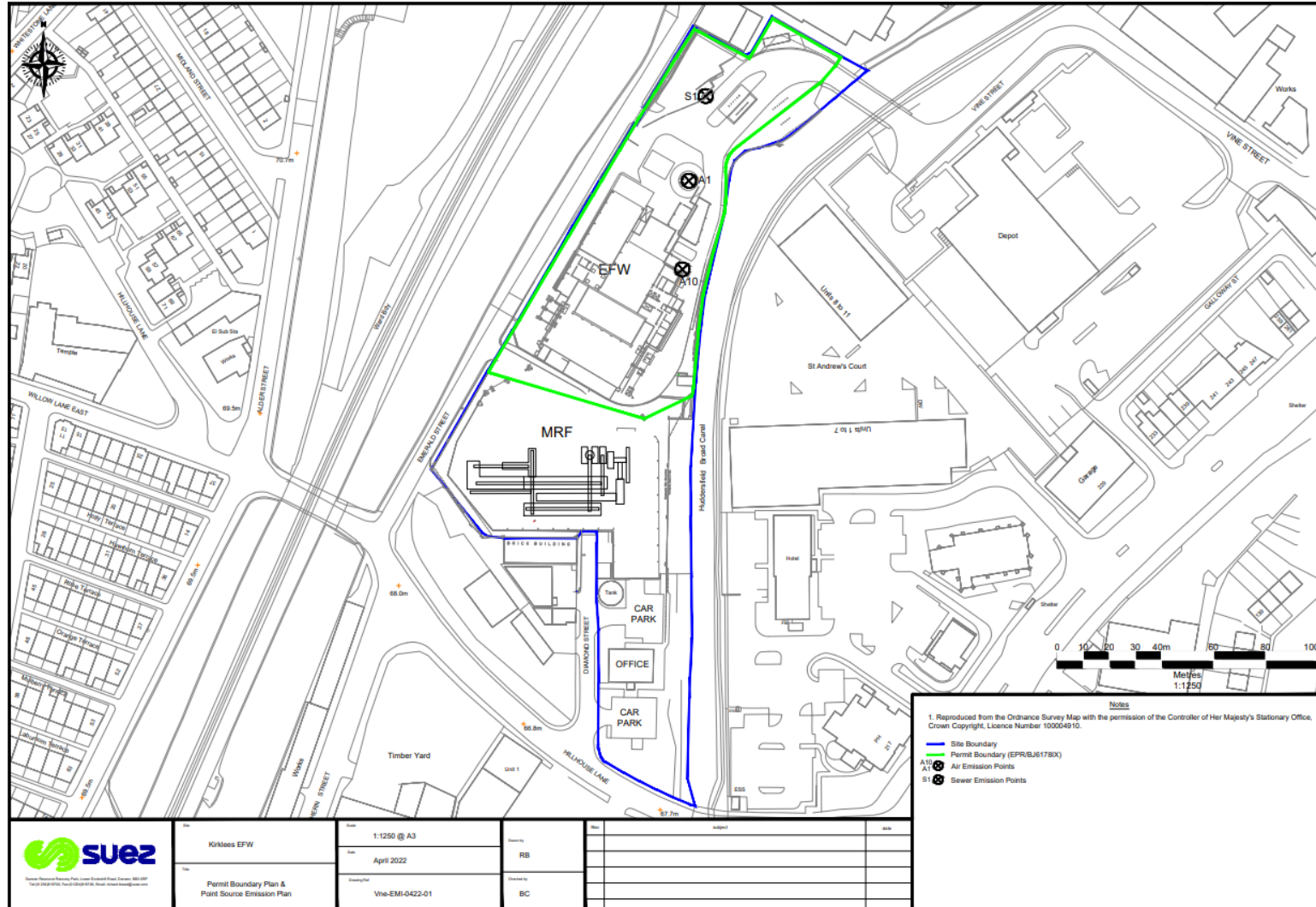
‘transition metals’ means any of the following metals: any compound of scandium, vanadium, manganese, cobalt, copper, yttrium, niobium, hafnium, tungsten, titanium, chromium, iron, nickel, zinc, zirconium, molybdenum and tantalum, as well as these materials in metallic form, as far as these are classified as hazardous substances

‘stabilisation’ means processes which change the hazardousness of the constituents in the waste and transform hazardous waste into non-hazardous waste

‘solidification’ means processes which only change the physical state of the waste by using additives without changing the chemical properties of the waste

‘partly stabilised wastes’ means wastes containing, after the stabilisation process, hazardous constituents which have not been changed completely into non-hazardous constituents and could be released into the environment in the short, middle or long term.

Schedule 7 – Site plan



END OF PERMIT

Permit number
EPR/BJ6178IX