



# Annex 1: Relevant site plans

For the proposed Sizewell C nuclear power station.

July 2022

Version 1

We are the Environment Agency. We protect and improve the environment.

We help people and wildlife adapt to climate change and reduce its impacts, including flooding, drought, sea level rise and coastal erosion.

We improve the quality of our water, land and air by tackling pollution. We work with businesses to help them comply with environmental regulations. A healthy and diverse environment enhances people's lives and contributes to economic growth.

We can't do this alone. We work as part of the Defra group (Department for Environment, Food & Rural Affairs), with the rest of government, local councils, businesses, civil society groups and local communities to create a better place for people and wildlife.

Published by:

Environment Agency  
Horizon House, Deanery Road,  
Bristol BS1 5AH

[www.gov.uk/environment-agency](http://www.gov.uk/environment-agency)

© Environment Agency 2022

All rights reserved. This document may be reproduced with prior permission of the Environment Agency.

Further copies of this report are available from our publications catalogue: [www.gov.uk/government/publications](http://www.gov.uk/government/publications) or our National Customer Contact Centre: 03708 506 506

Email: [enquiries@environment-agency.gov.uk](mailto:enquiries@environment-agency.gov.uk)

# Contents

1. Introduction .....	5
2. Sites within zone of influence .....	6
2.1. Alde, Ore and Butley Estuaries SAC, Alde-Ore Estuary SPA and Alde-Ore Ramsar .....	7
2.2. Benacre to Easton Bavents SPA .....	10
2.3. Dews Pond SAC .....	11
2.4. Minsmere to Walberswick Heaths and Marshes SAC, Minsmere to Walberswick Ramsar and Minsmere to Walberswick SPA .....	12
2.5. Orfordness to Shingle Street SAC .....	15
2.6. Outer Thames Estuary SPA .....	16
2.7. Sandlings SPA .....	17
2.8. Southern North Sea SAC .....	18
3. Sites with potential for functional linkage .....	19
3.1. Breydon Water SPA .....	20
3.2. Coquet Island SPA .....	21
3.3. Flamborough and Filey Coast SPA .....	22
3.4. Foulness (Mid Essex Coast Phase 5) SPA .....	23
3.5. Great Yarmouth and North Denes SPA .....	24
3.6. Humber Estuary Ramsar .....	25
3.7. Humber Estuary SAC .....	26
3.8. Minsmere to Walberswick Heaths and Marshes SSSI .....	27
3.9. Plymouth Sound and Estuaries SAC .....	28
3.10. Sizewell Marshes SSSI .....	29
3.11. Thanet Coast and Sandwich Bay SPA .....	30
3.12. The Wash and North Norfolk Coast SAC .....	31
4. Continental sites .....	32
4.1. Elbe zwischen Geesthacht und Hamburg SCI .....	33
4.2. Hamburger Unterelbe SCI .....	34
4.3. Mühlenberger Loch/Neßsand SCI .....	35
4.4. Nebenarme der Weser mit Strohauser Plate und Juliusplate SCI .....	36

4.5. Rappenschutzgebiet Hamburger Stromelbe SCI.....	37
4.6. Schelde- en Durmeëstuarium van de Nederlandse grens tot Gent SAC.....	38
4.7. Schleswig-Holsteinisches Elbästuar und angrenzende Flächen SCI.....	39
4.8. Untereibe SCI.....	40
4.9. Unterweser SCI.....	41
4.10. Weser bei Bremerhaven SCI.....	42
References .....	43

# 1. Introduction

The following document provides 34 figures to demonstrate the location of the relevant conservation sites considered within the Habitats Regulations Assessment Report (HRAR), in relation to the operational Sizewell C (SZC) site for the 3 operational permits:

- combustion activities (CA) permit application (reference: EPR/MP3731AC/A001)
- radioactive substances activities (RSA) permit application (reference: EPR/HB3091DJ/A001)
- water discharge activities (WDA) permit application (reference: EPR/CB3997AD/A001).

The site plans provided use either the European Nature Information System website (<https://eunis.eea.europa.eu/>) to display the boundary of the relevant Natura 2000 designated sites, or Environment Agency Easimap 2 GIS (mapping software used by Environment Agency permitting teams) to display the boundary of the relevant Ramsar designated sites. All designated site locations/boundaries are displayed in turquoise (■). The location of the SZC site is displayed as a green square (■) on each of the 34 figures listed below.

Further information on the European sites is available in Annex 2 (Environment Agency, 2022 a) and Annex 3 (Environment Agency, 2022b) of the SZC HRAR.

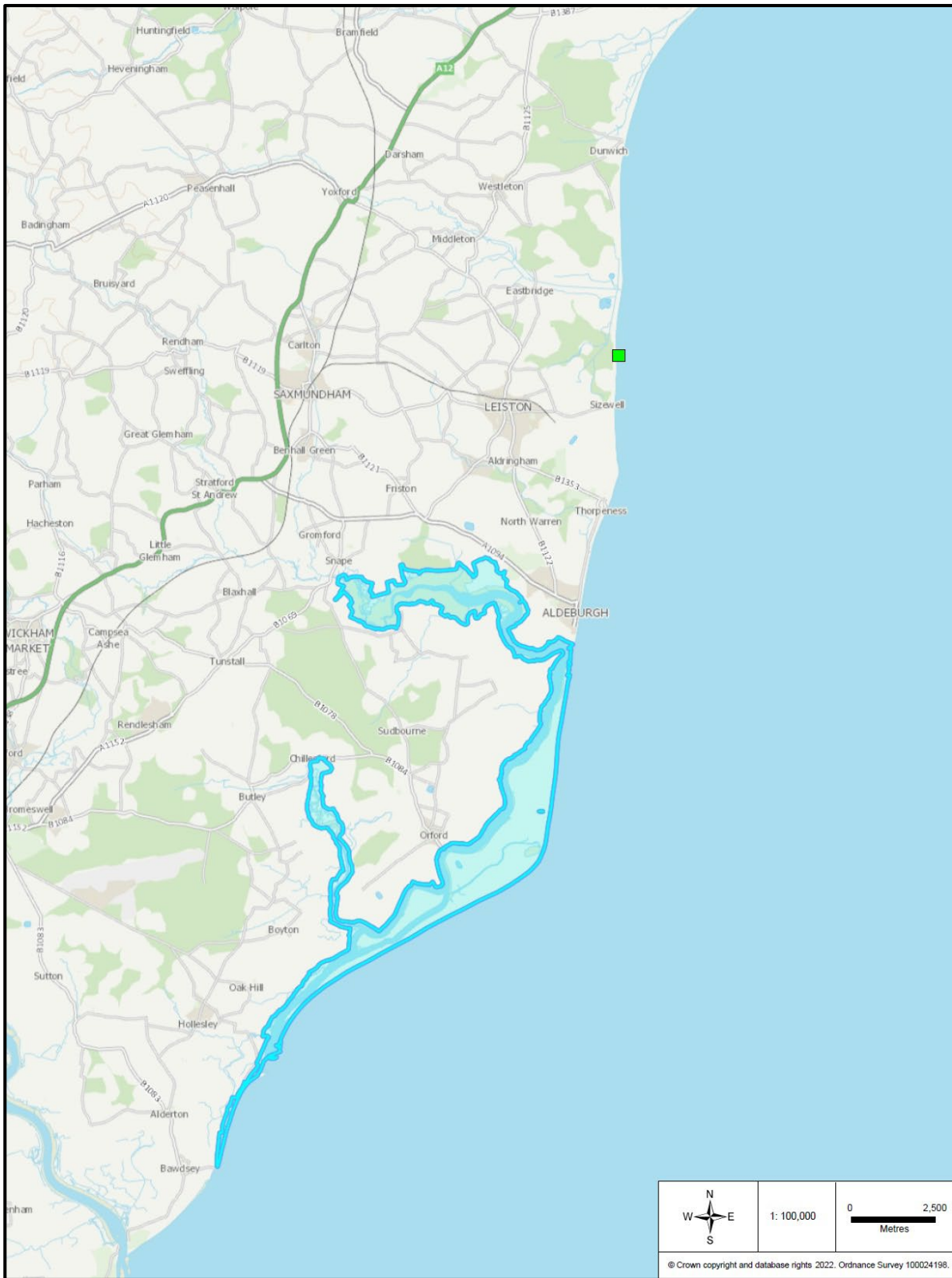
## 2. Sites within zone of influence

These sites may have direct or indirect connectivity with SZC via aerial emissions or discharge to the marine environment.



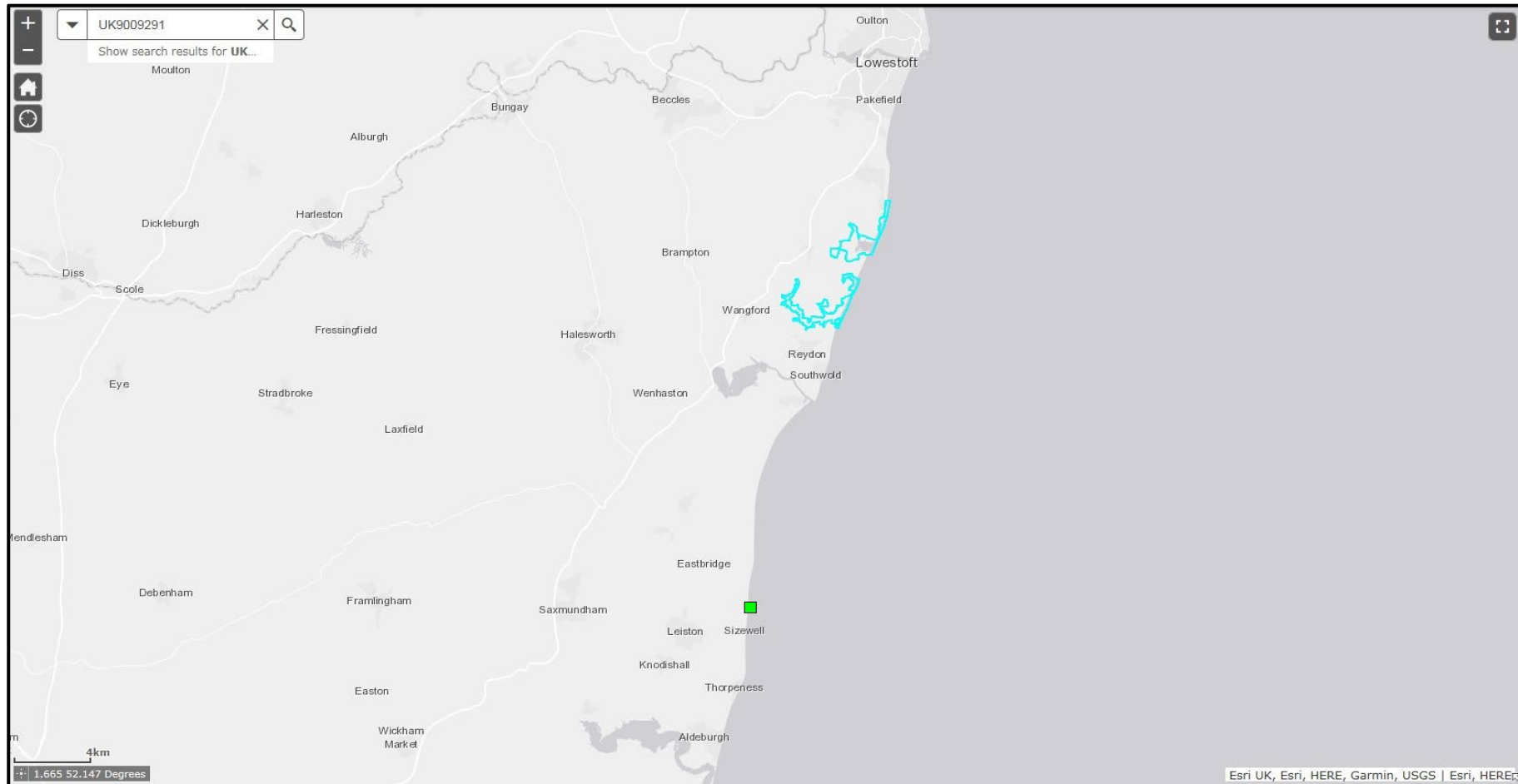






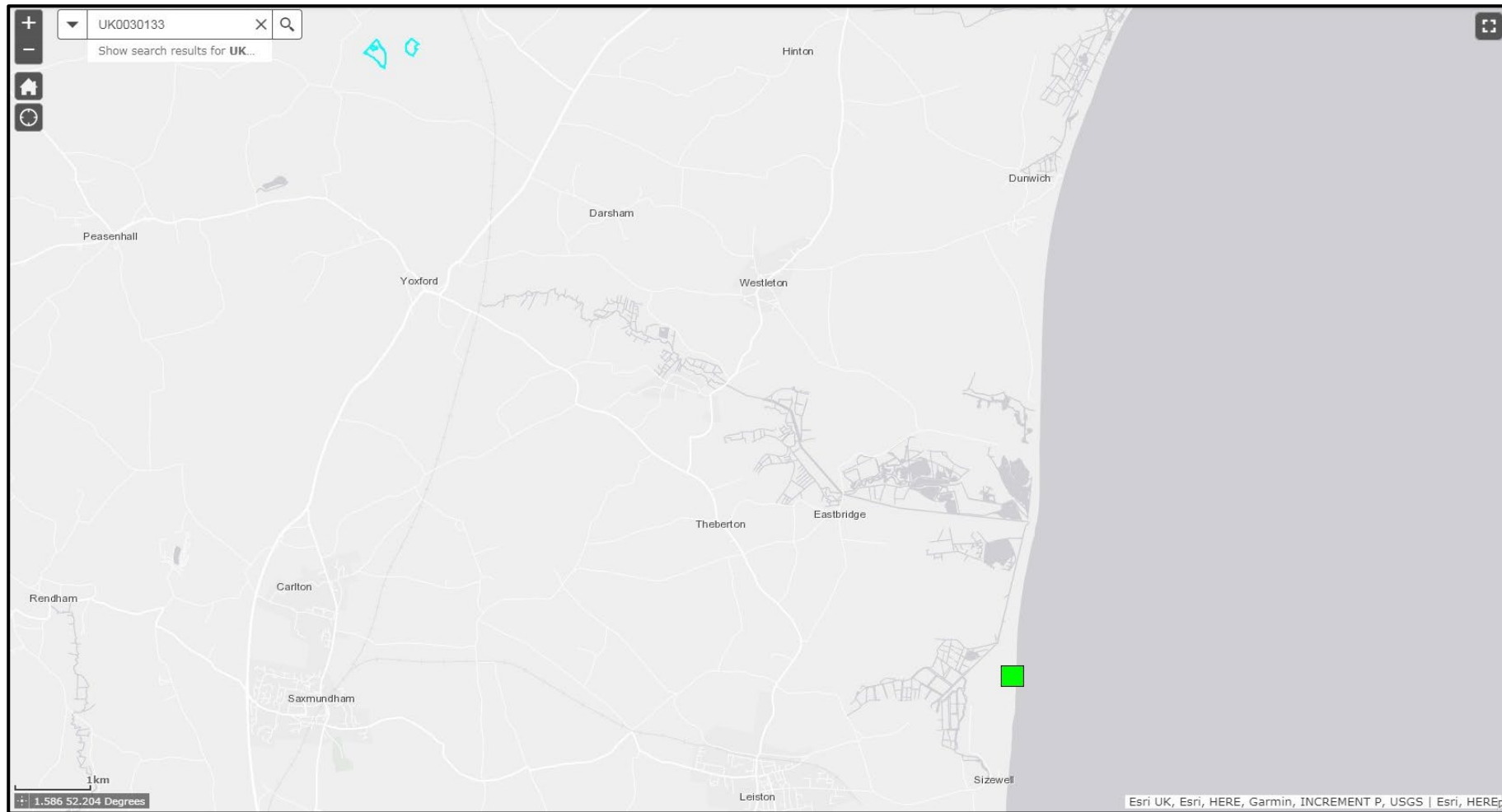
**Figure 3: This map shows the location of Alde-Ore Estuary Ramsar (UK11002) in relation to SZC. The site is located on the coast, to the south of and within 10km of SZC. (Source: Easimap 2, 2022)**

## 2.2. Benacre to Easton Barents SPA



**Figure 4:** This map shows the location of Benacre to Easton Barents SPA (UK9009291) in relation to SZC. The site is located on the coast, to the north of and within 20km of SZC. (Source: [EUNIS, 2022](#))

## 2.3. Dews Pond SAC



**Figure 5:** This map shows the location of Dews Pond SAC (UK0030133) in relation to SZC. The site is located northwest of SZC, within 10km. (Source: [EUNIS, 2022](#))

## 2.4. Minsmere to Walberswick Heaths and Marshes SAC, Minsmere to Walberswick Ramsar and Minsmere to Walberswick SPA

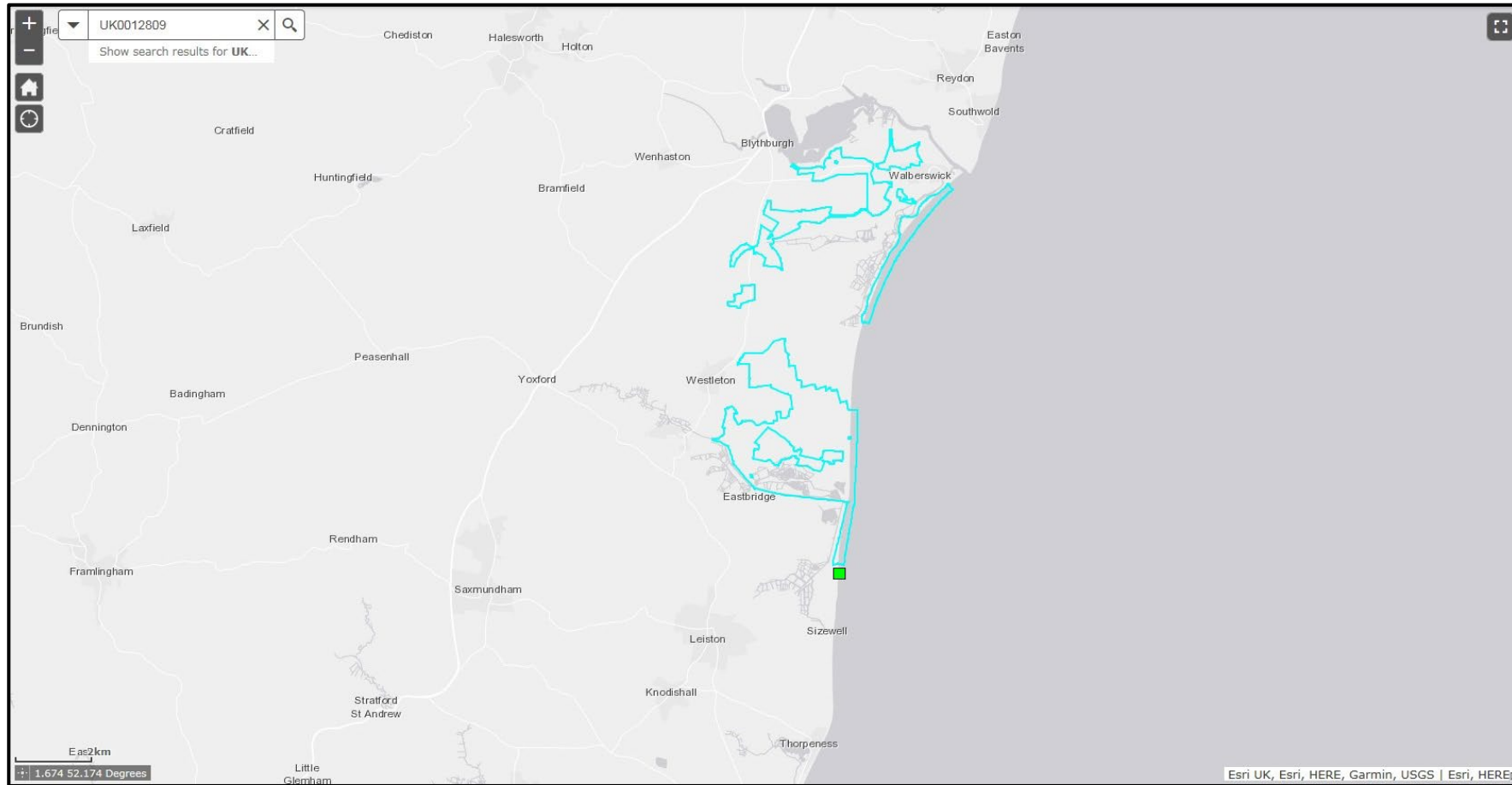
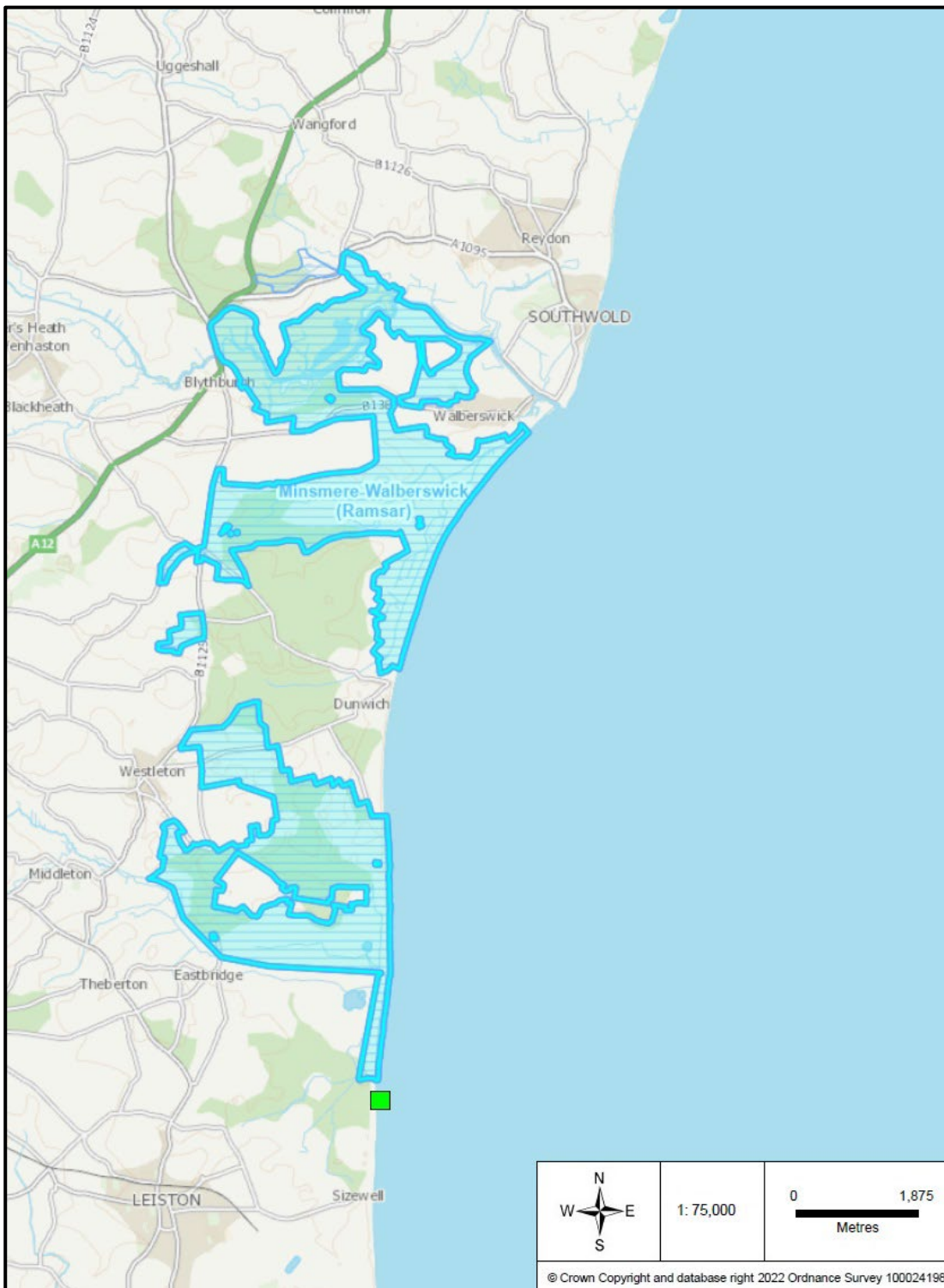
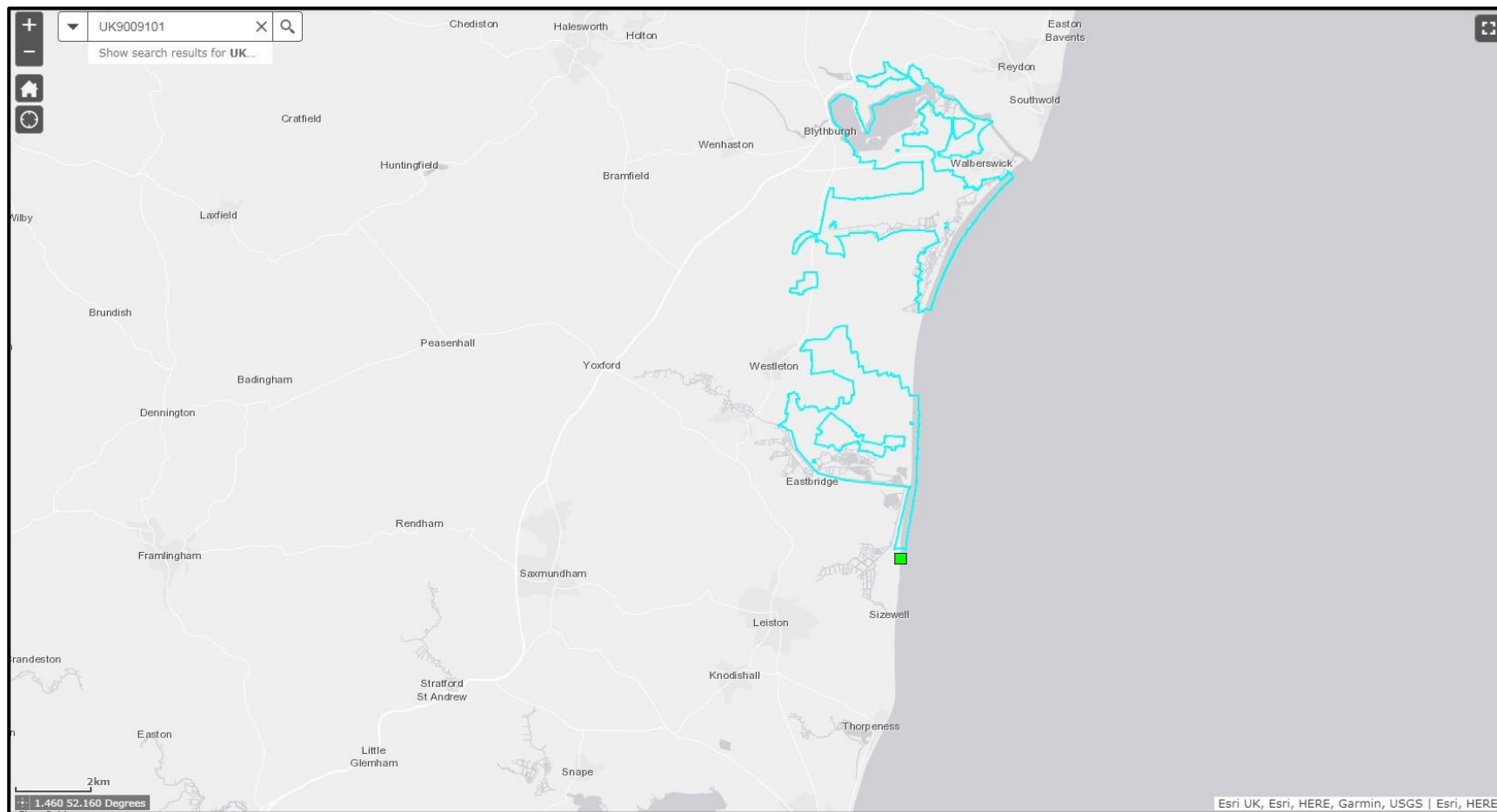


Figure 6: This map shows the location of Minsmere to Walberswick Heaths and Marshes SAC (UK0012809) in relation to SZC. This site is adjacent to SZC, located on the coast and stretches northwards. (Source: [EUNIS, 2022](#))



**Figure 7: This map shows the location of Minsmere–Walberswick Ramsar (UK11044) in relation to SZC. This site is adjacent to SZC, located on the coast and stretches northwards. (Source: Easimap 2, 2022)**



**Figure 8: This map shows the location of Minsmere - Walberswick SPA (UK9009101) in relation to SZC. This site is adjacent to SZC, located on the coast and stretches northwards. (Source: [EUNIS 2022](#))**



## 2.5. Orfordness to Shingle Street SAC

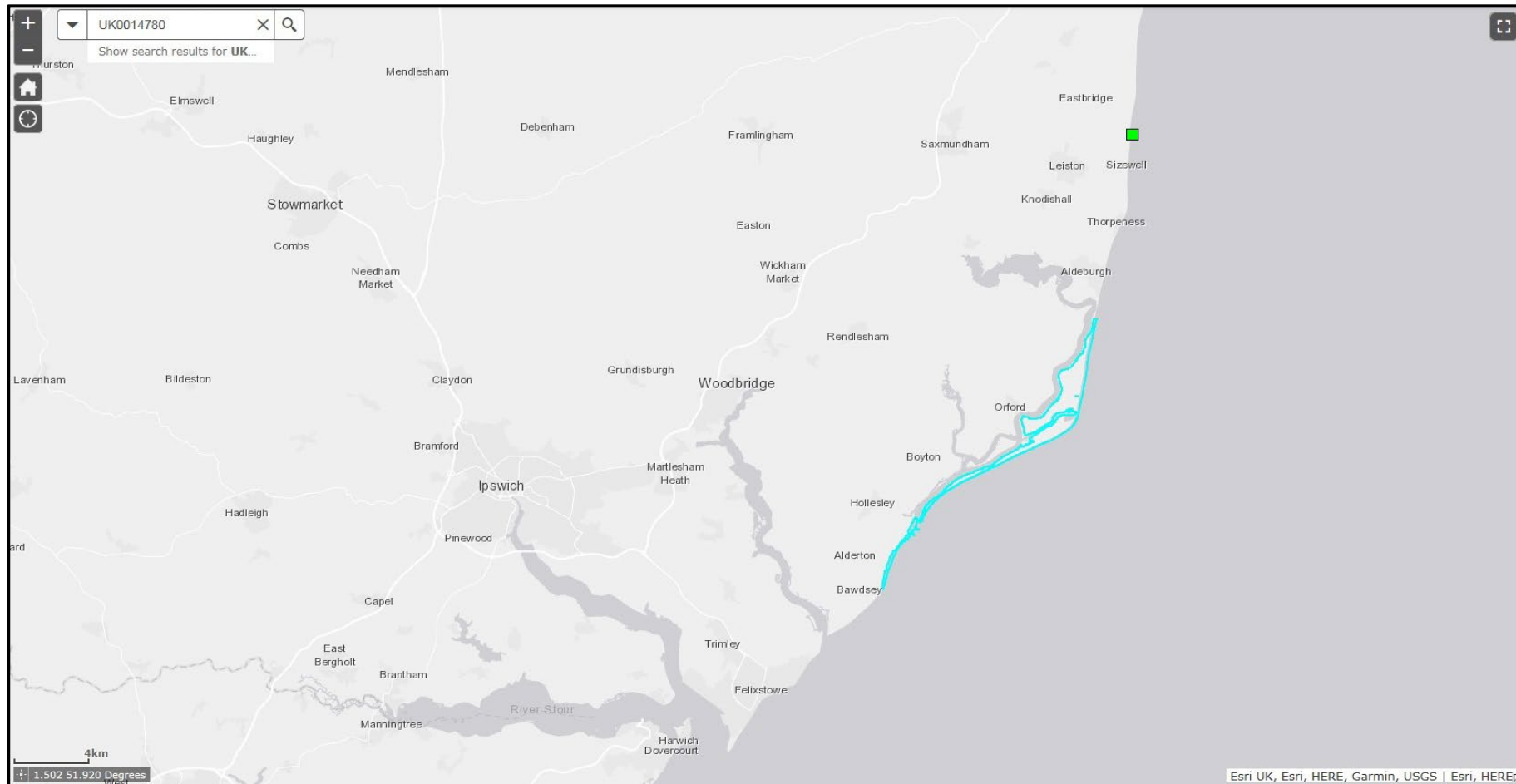


Figure 9: This map shows the location of Orfordness to Shingle Street SAC (UK0014780) in relation to SZC. This site is located on the coast, to the south of and within 10km of SZC. (Source: [EUNIS 2022](#))

## 2.6. Outer Thames Estuary SPA

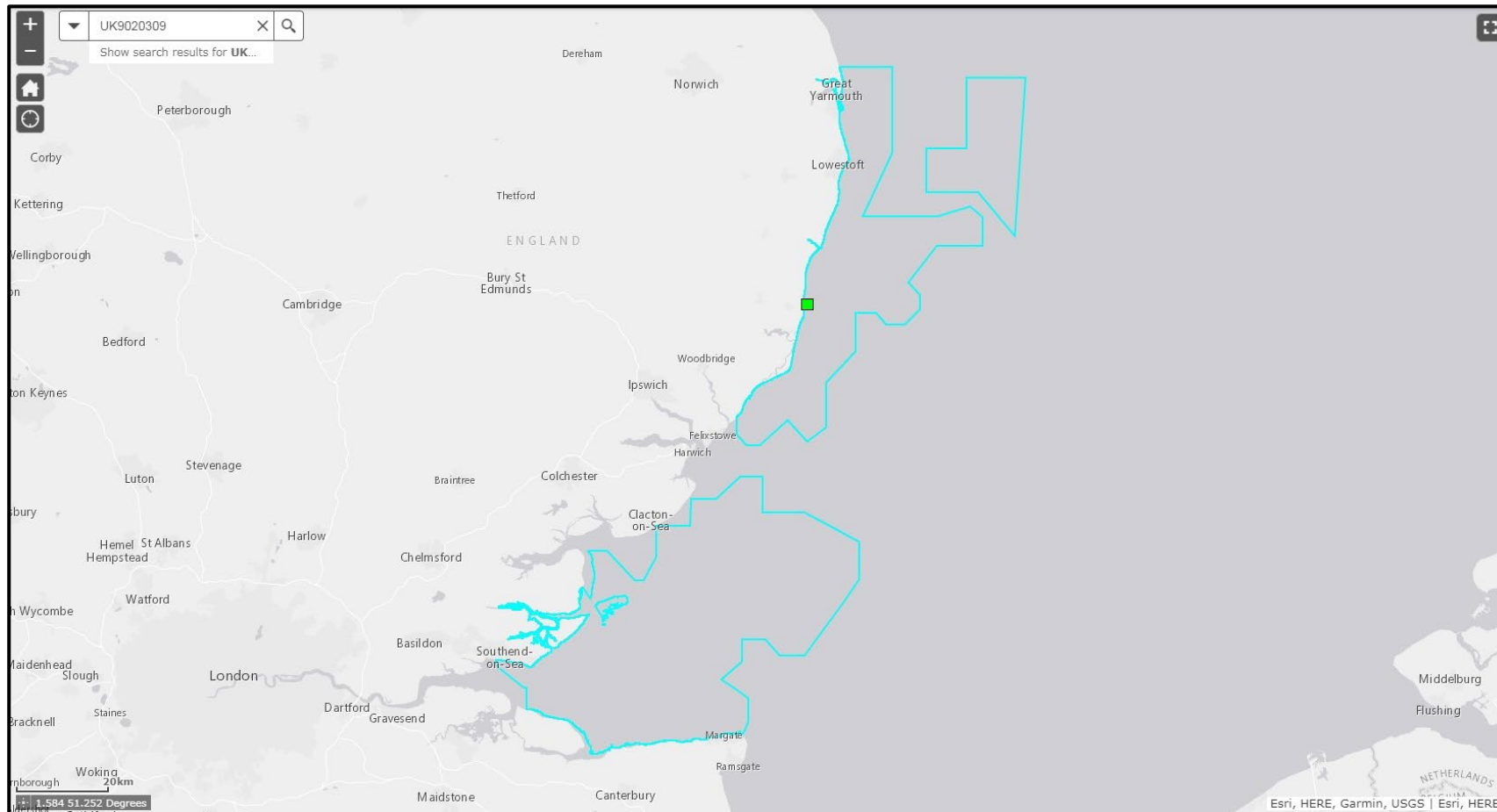
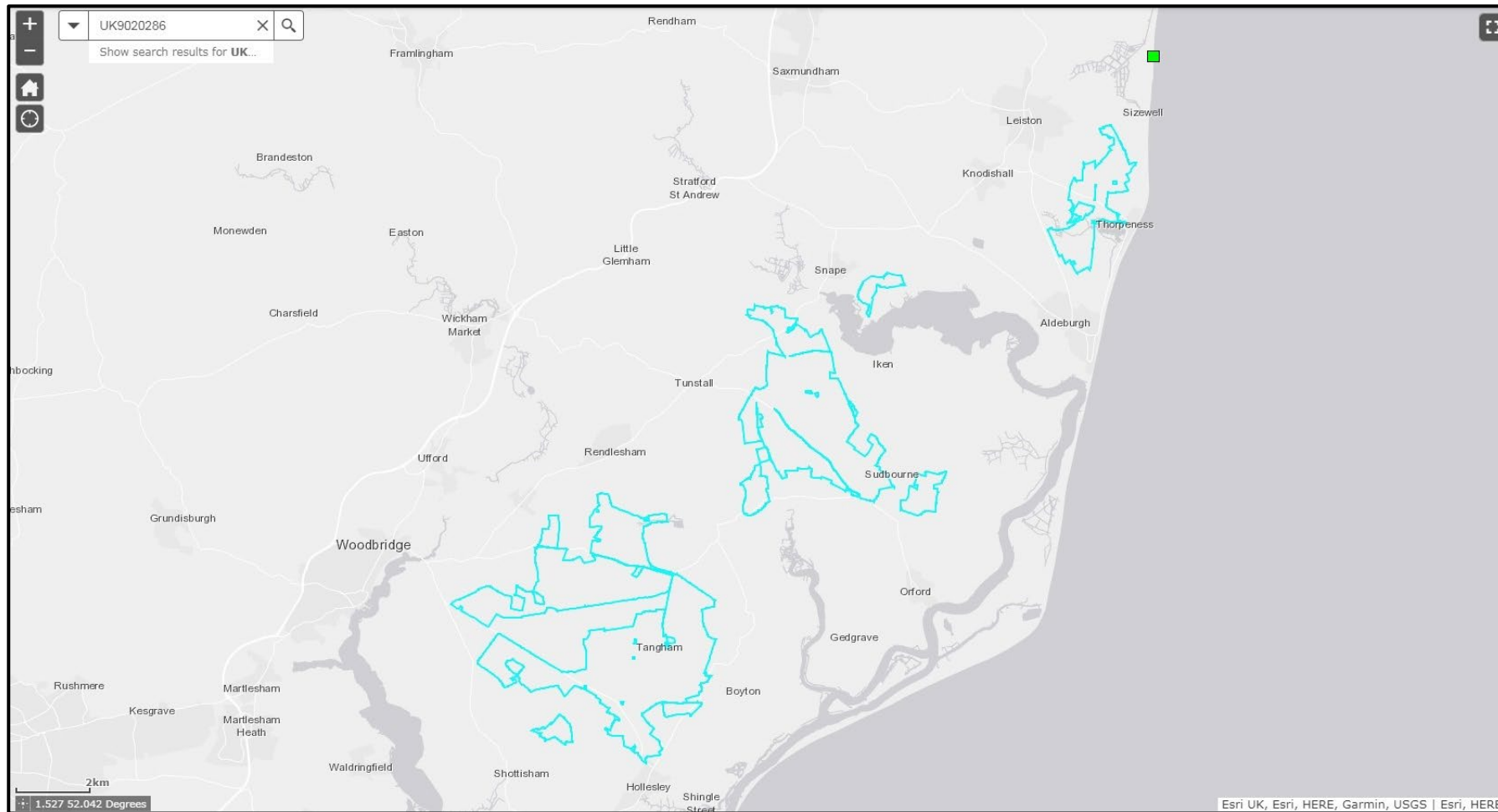


Figure 10: This map shows the location of the Outer Thames Estuary SPA (UK9020309) in relation to SZC. SZC is adjacent to the site with the WDA outlets directly into the site. (Source: [EUNIS 2022](#))

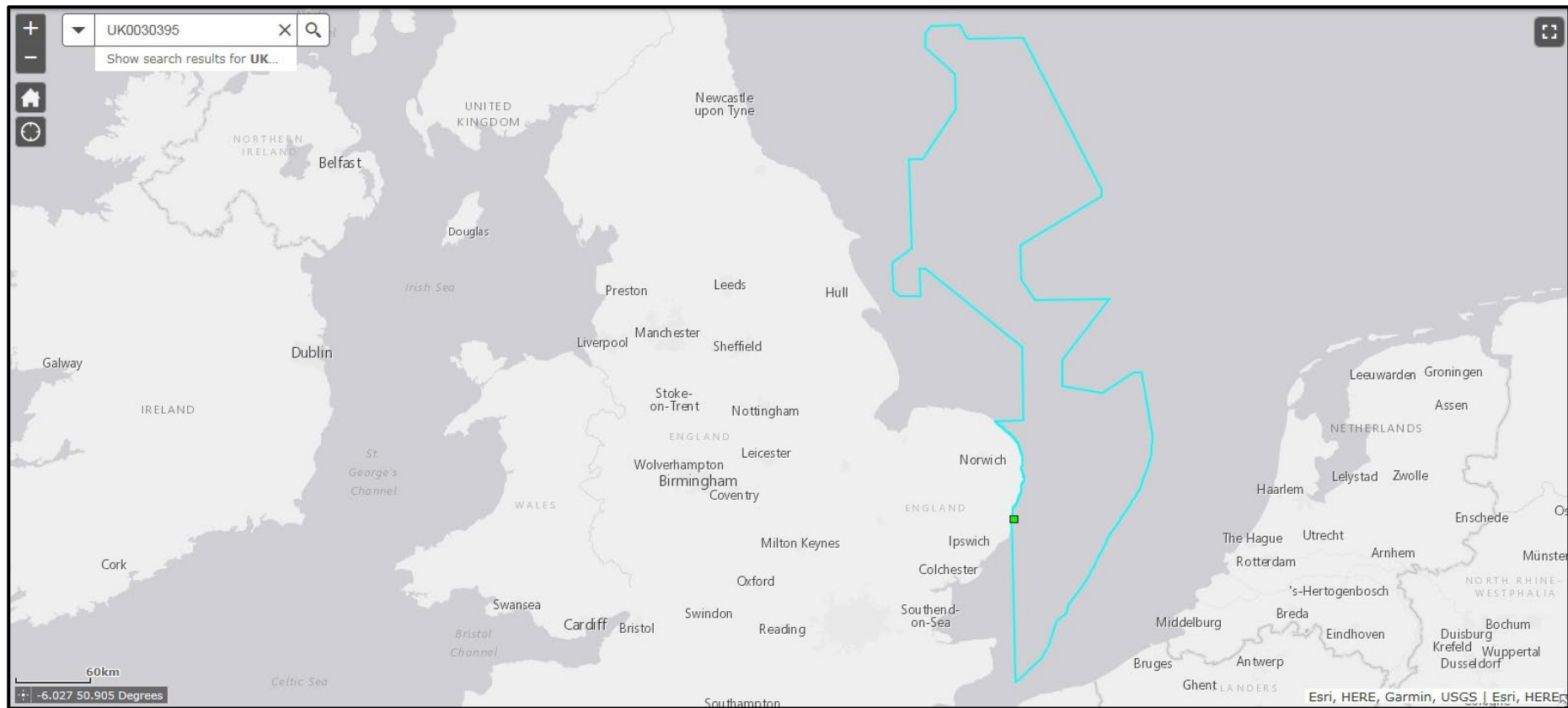


## 2.7. Sandlings SPA



**Figure 11: This map shows the location of Sandlings SPA (UK9020286) in relation to SZC. The site is located to the south of SZC with the closest section of the site being within 1km of the Sizewell development. (Source: [EUNIS 2022](#))**

## 2.8. Southern North Sea SAC



**Figure 12: This map shows the location of the Southern North Sea SAC (UK0030395) in relation to SZC. SZC is directly adjacent to the site with WDA outlets directly into the site. The site lies along the coast but predominantly covers offshore waters of the central and southern North Sea. (Source: [EUNIS 2022](#))**

### **3. Sites with potential for functional linkage**

There are potentially a number of more distant UK sites that need considering in the HRAR. These sites have mobile features such as sea birds, marine mammals and migratory fish that can travel great distances. Such features could potentially be present within the waters affected by the SZC operation and therefore impact on them must be considered.

### 3.1. Breydon Water SPA

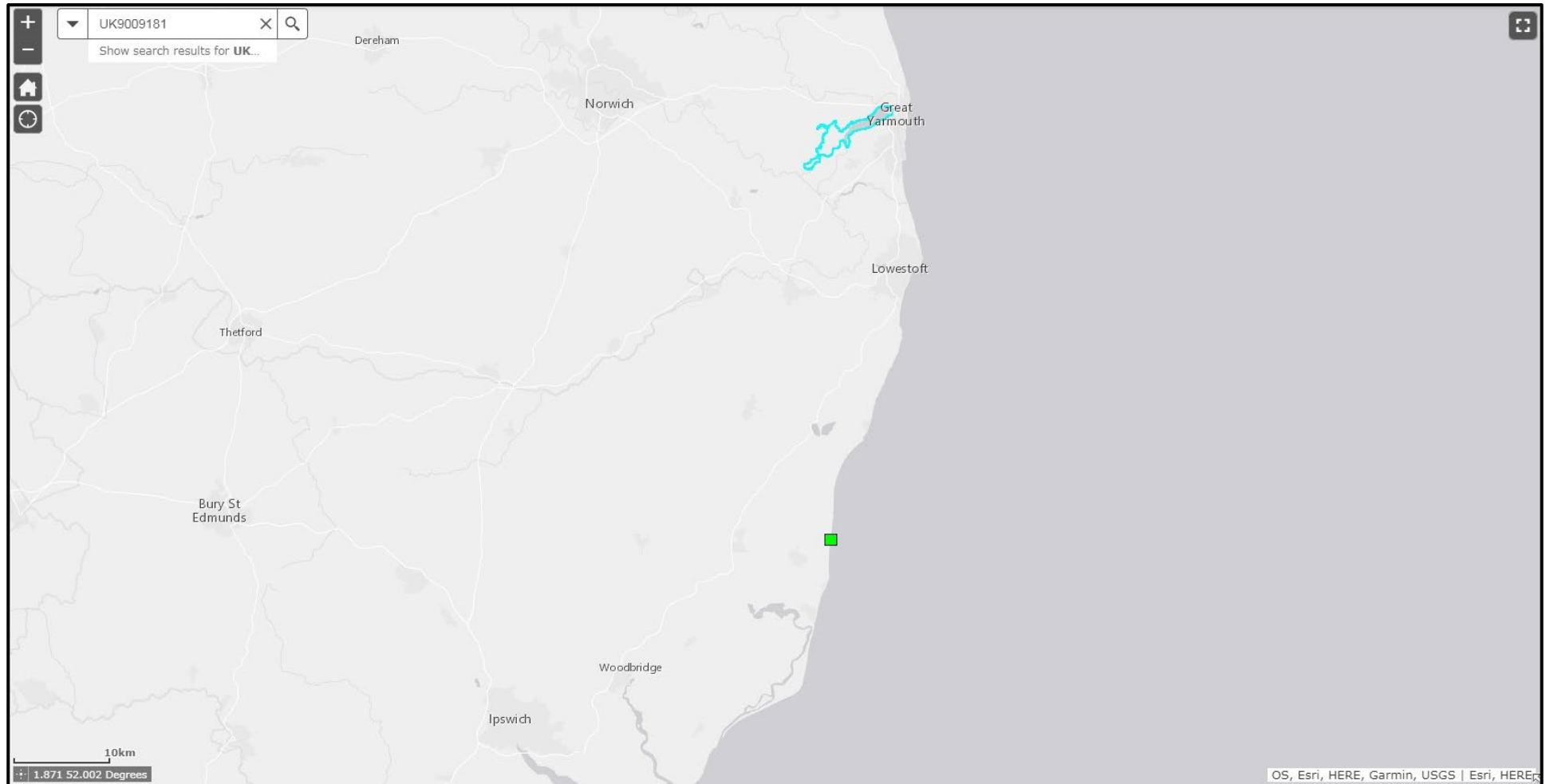


Figure 13: This map shows the location of Breydon Water SPA (UK9009181) in relation to SZC. The site is located to the north of SZC, close to the coast and over 50km away. (Source: [EUNIS 2022](#))

## 3.2. Coquet Island SPA

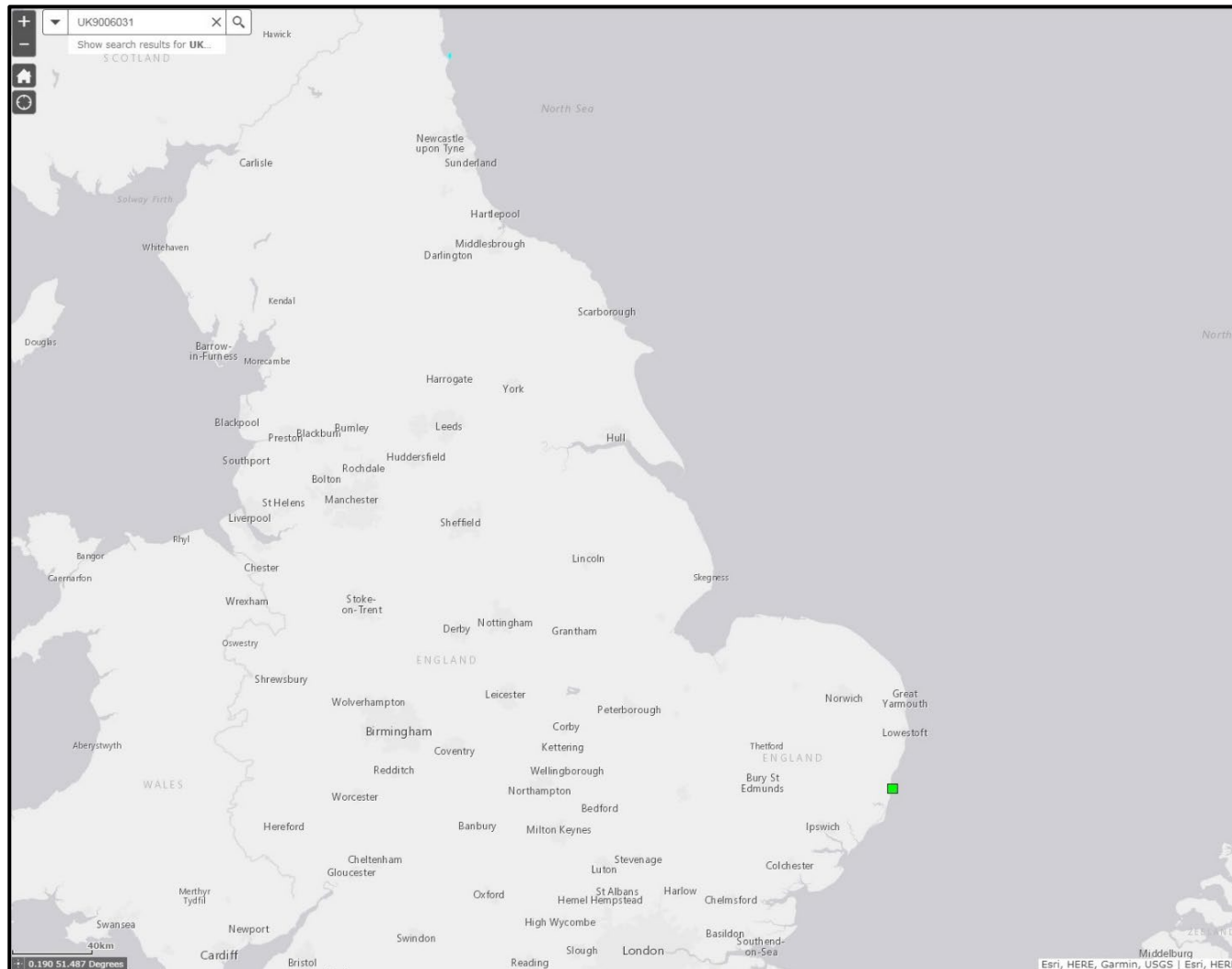


Figure 14: This map shows the location of Coquet Island SPA (UK9006031) in relation to SZC. The site is located on the coast over 400km north of SZC. (Source: [EUNIS 2022](#))

### 3.3. Flamborough and Filey Coast SPA

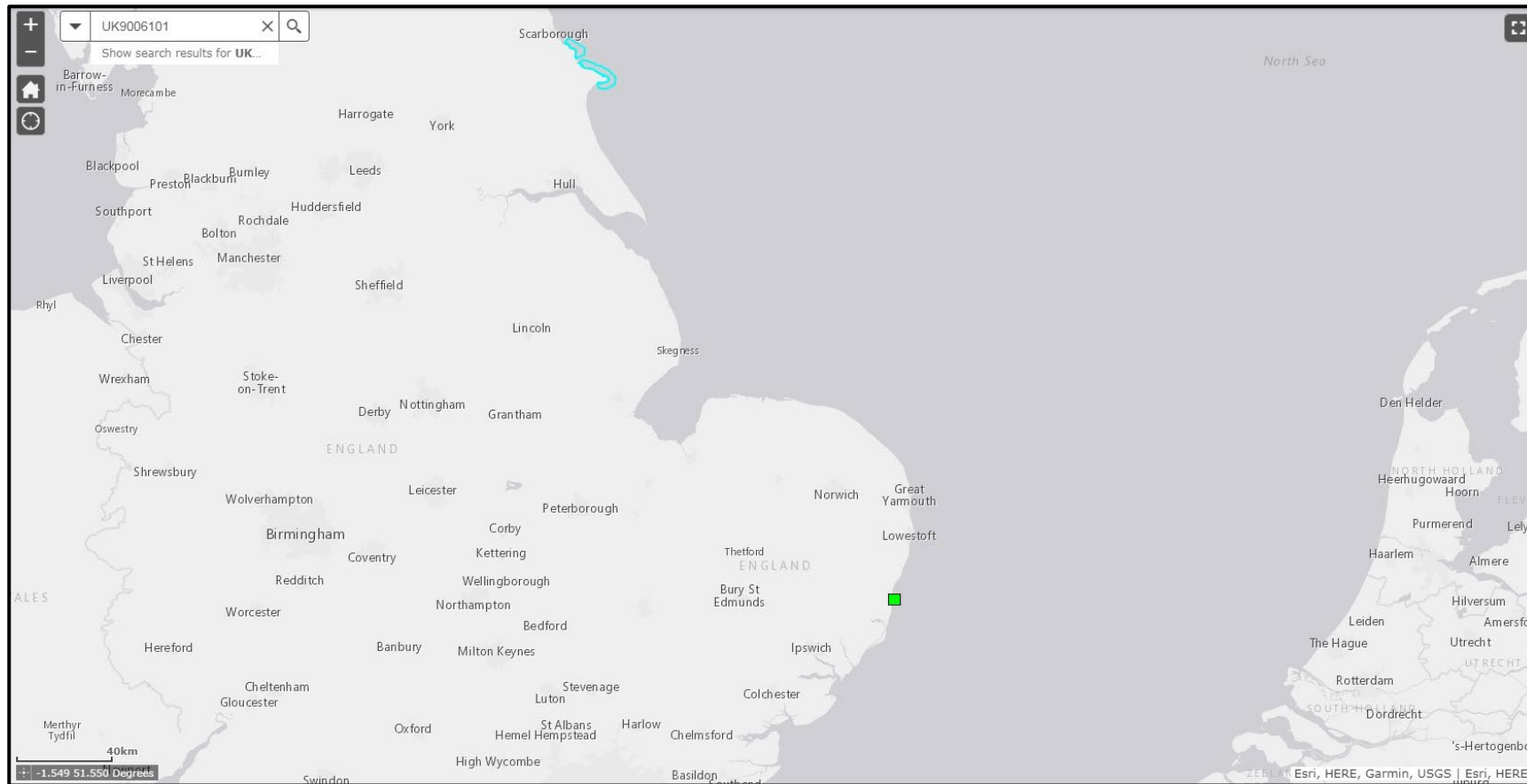


Figure 15: This map shows the location of Flamborough and Filey Coast SPA (UK9006101) in relation to SZC. The site is located on the coast over 200km north of SZC. (Source: [EUNIS 2022](#))

### 3.4. Foulness (Mid Essex Coast Phase 5) SPA

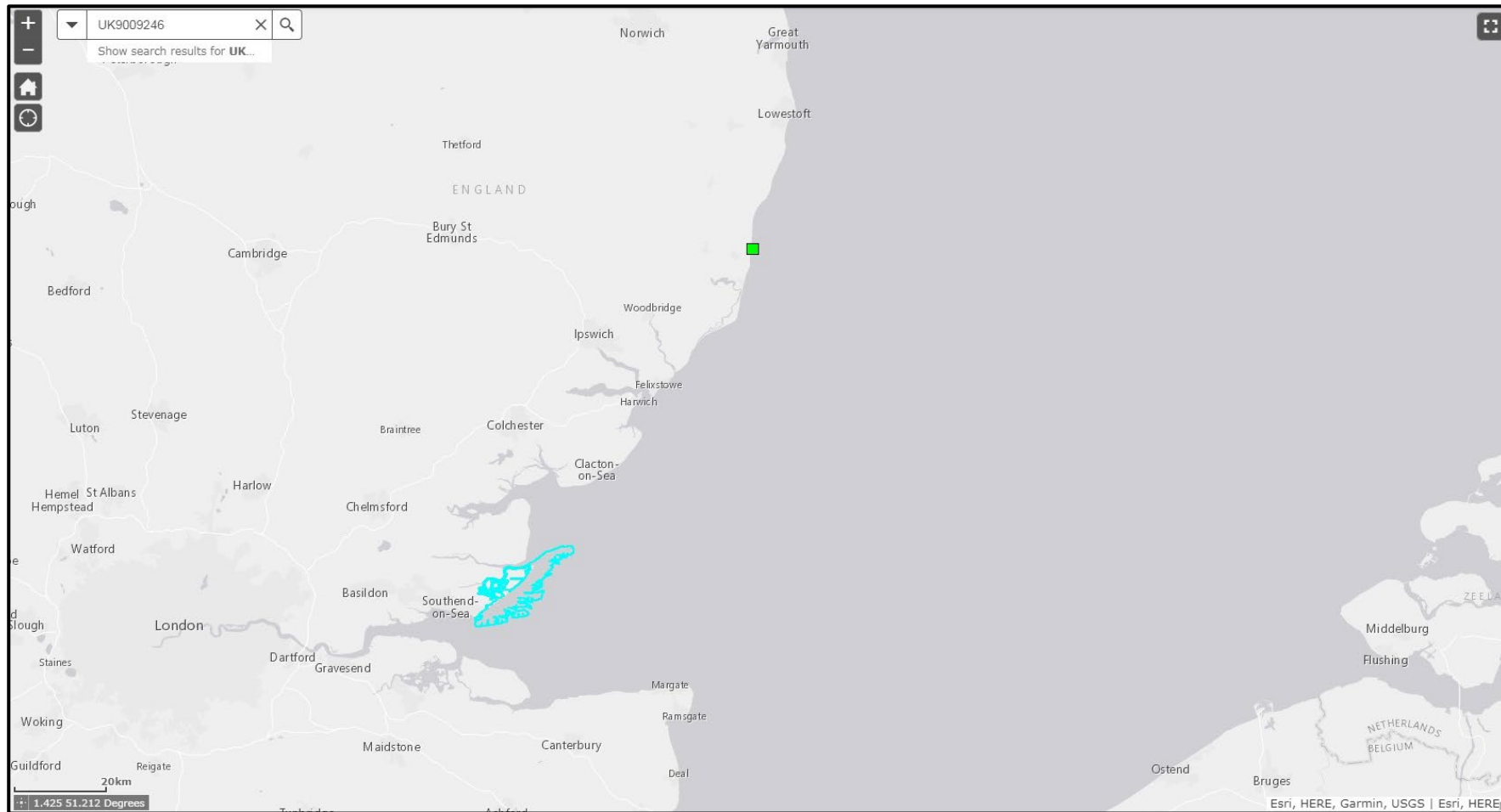


Figure 16: This map shows the location of Foulness (Mid-Essex Coast Phase 5) SPA (UK9009246) in relation to SZC. The site is located on the coast, south of and over 100km away from SZC. (Source: [EUNIS 2022](#))

### 3.5. Great Yarmouth and North Denes SPA

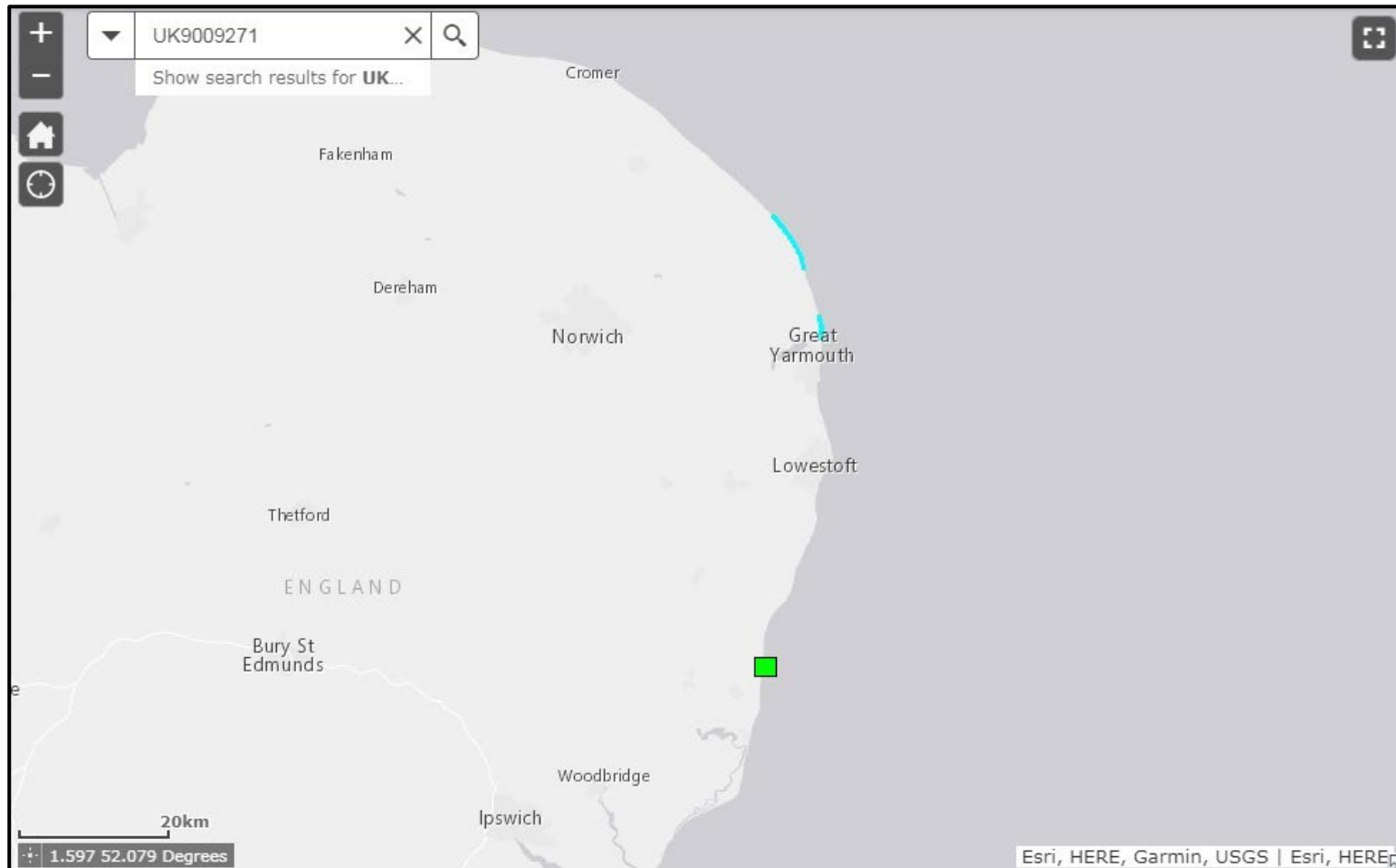
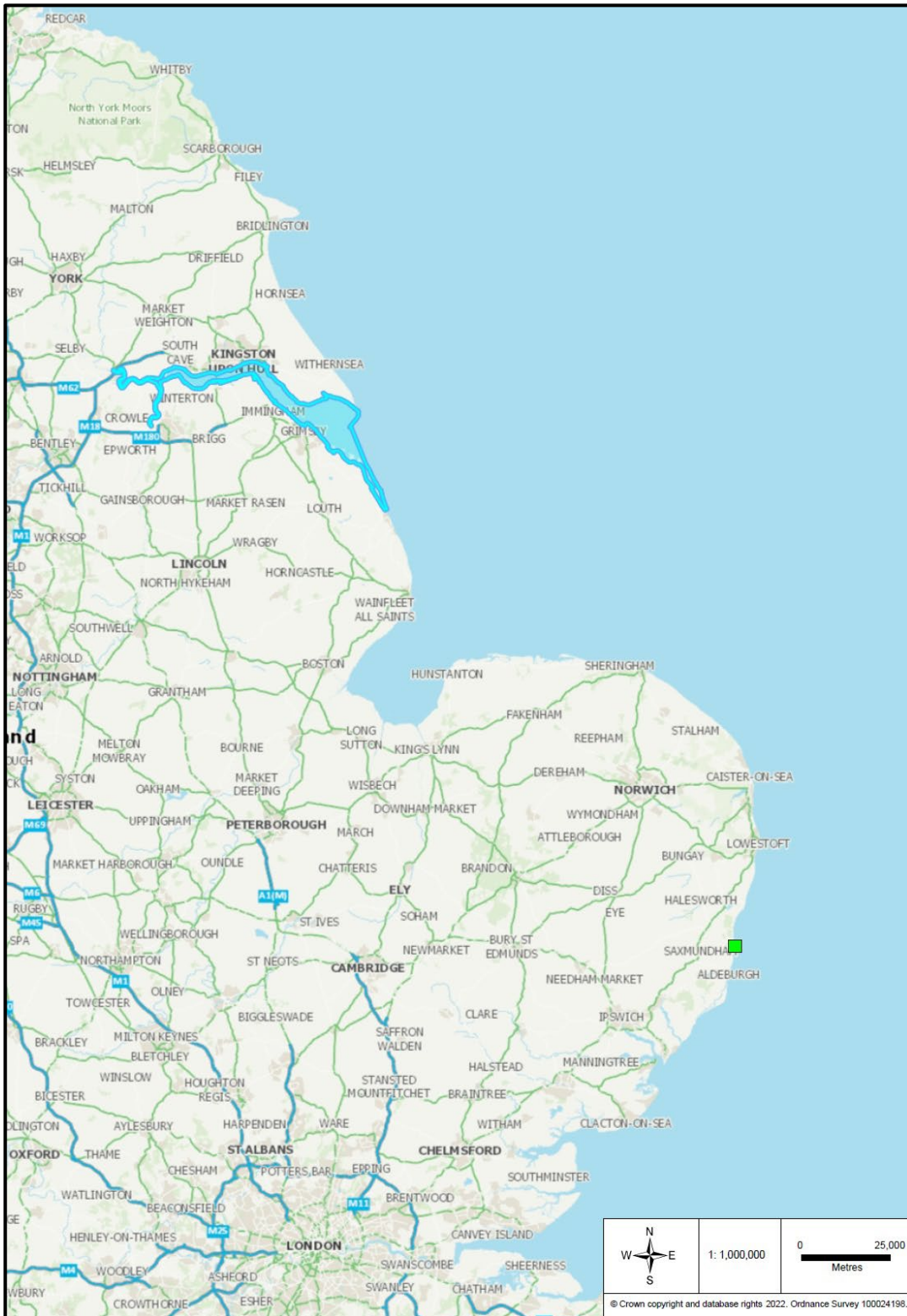


Figure 17: This map shows the location of Great Yarmouth North Denes SPA (UK9009271) in relation to SZC. The site is located on the coast, north of and over 50km away from SZC. (Source: [EUNIS 2022](#))



### 3.6. Humber Estuary Ramsar



**Figure 18: This map shows the location of Humber Estuary Ramsar (UK11031) in relation to SZC. The site is located on the coast, north of and over 150km away from SZC. (Source: Easimap 2, 2022)**

### 3.7. Humber Estuary SAC

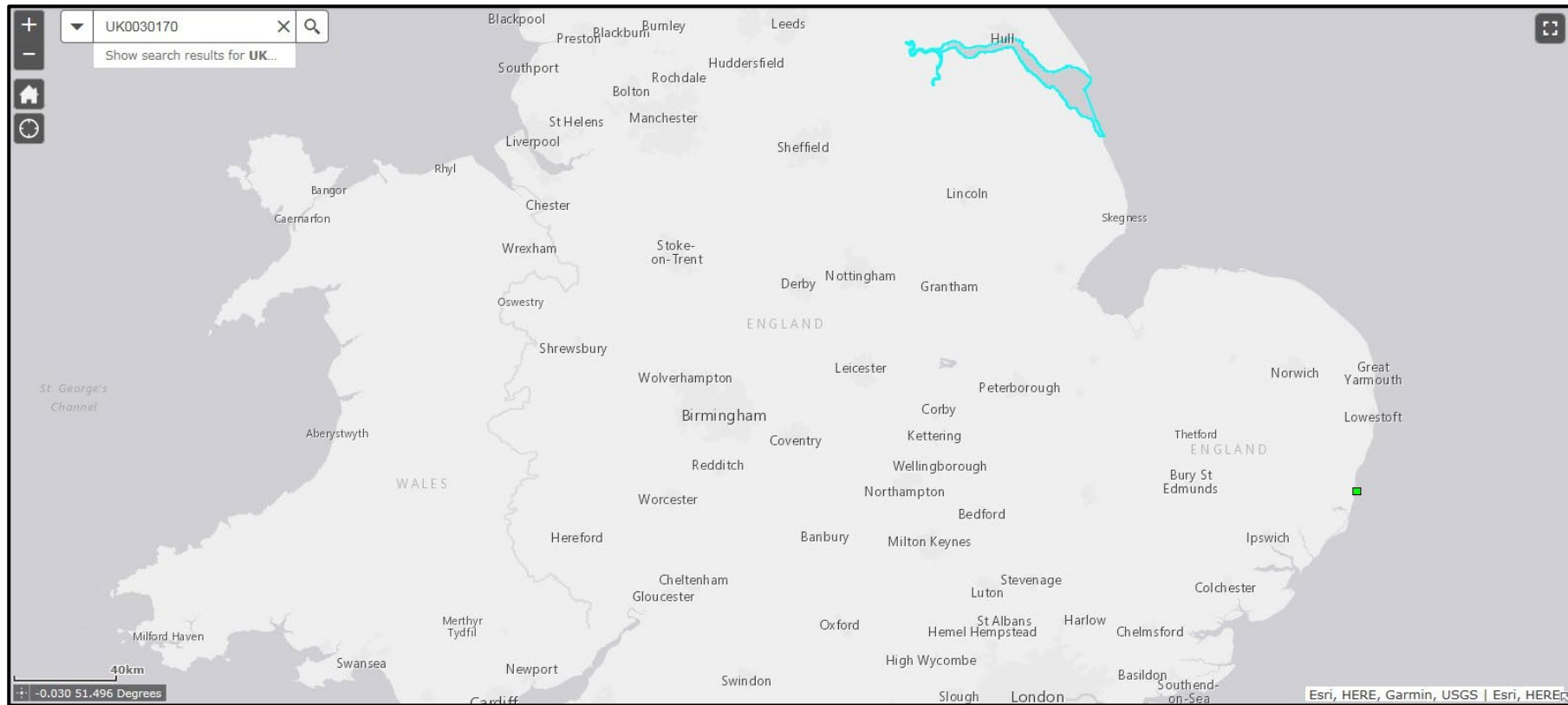
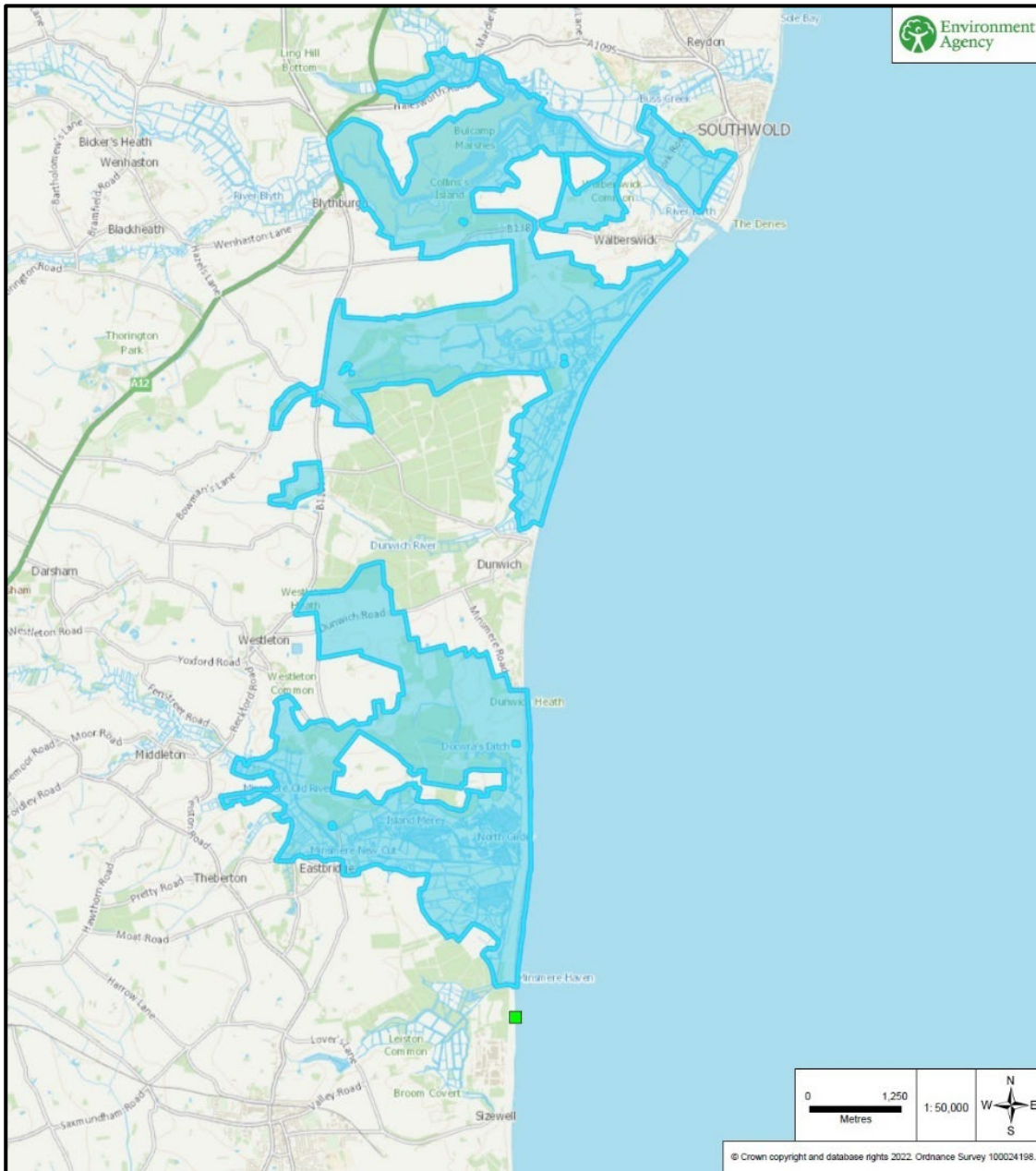


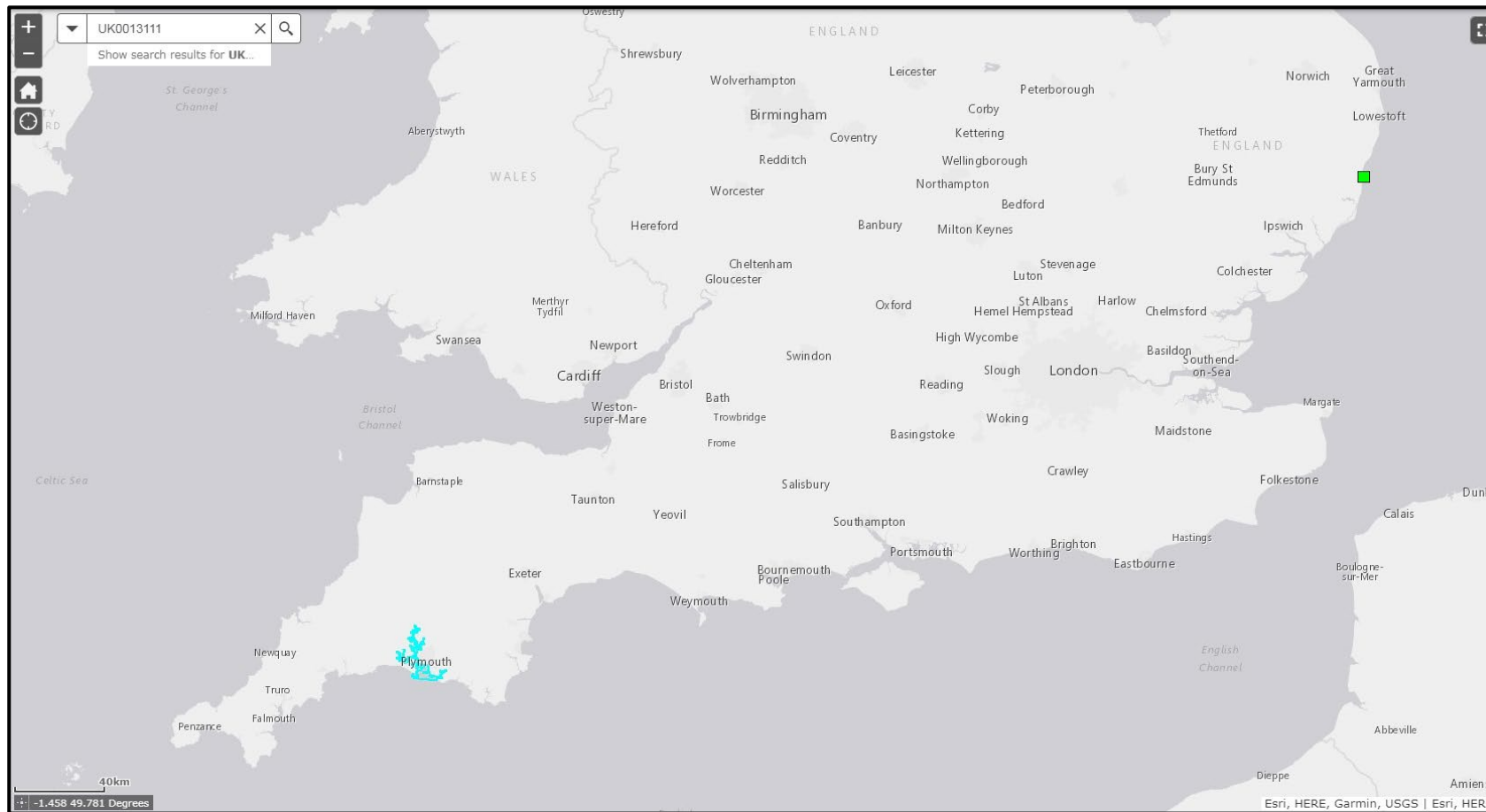
Figure 19: This map shows the location of the Humber Estuary SAC (UK0030170) in relation to SZC. The site is located on the coast, north of and over 150km away from SZC. (Source: [EUNIS 2022](#))

### 3.8. Minsmere to Walberswick Heaths and Marshes SSSI



**Figure 20: This map shows the location of Minsmere-Walberswick Heaths and Marshes SSSI (1000721) in relation to SZC. The site is located on the coast, adjacent to SZC. (Source: Easimap 2, 2022)**

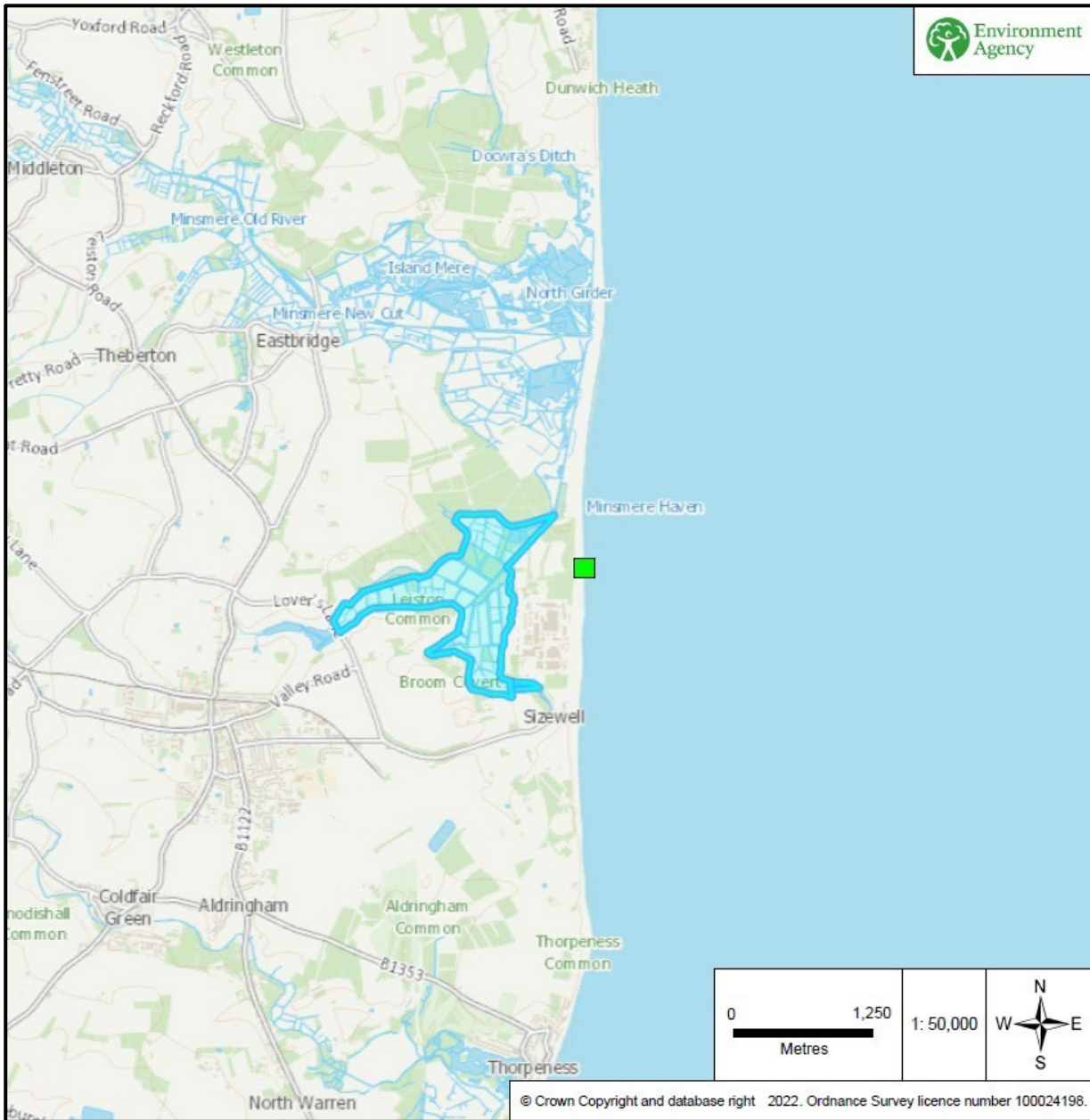
### 3.9. Plymouth Sound and Estuaries SAC



**Figure 21:** This map shows the location of Plymouth Sound and Estuaries SAC (UK0013111) in relation to SZC. The site is located on the South-West coast of England at Plymouth and is over 450km away from SZC. (Source: [EUNIS 2022](#))



### 3.10. Sizewell Marshes SSSI



**Figure 22: This map shows the location of Sizewell Marshes SSSI (1003416) in relation to SZC. The site is located adjacent to SZC, to the west. (Source: Easimap, 2022)**

### 3.11. Thanet Coast and Sandwich Bay SPA

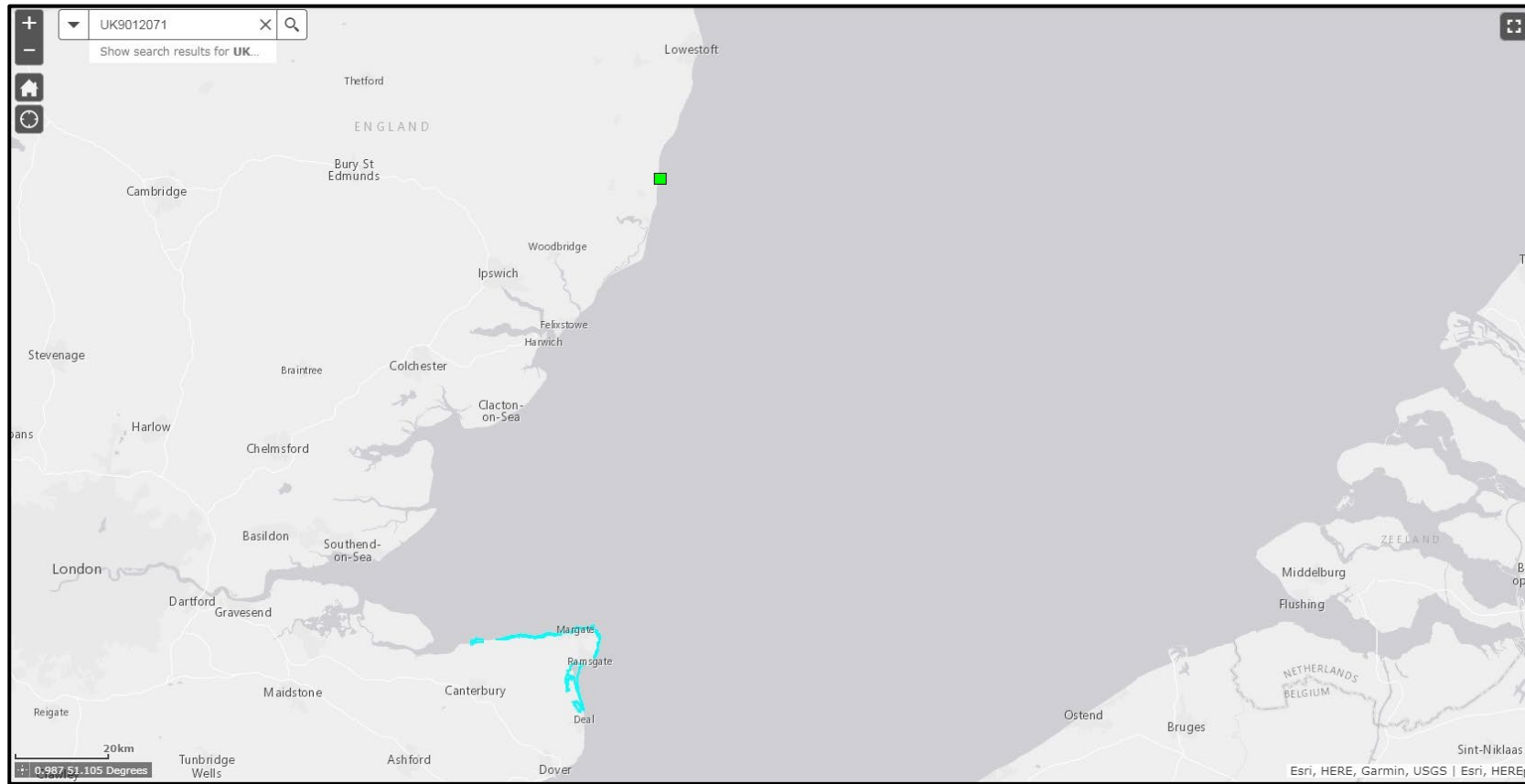


Figure 23: This map shows the location of the Thanet Coast and Sandwich Bay SPA (UK9012071) in relation to SZC. The site is located on the coast, south of and over 200km away from SZC. (Source: [EUNIS 2022](#))

### 3.12. The Wash and North Norfolk Coast SAC

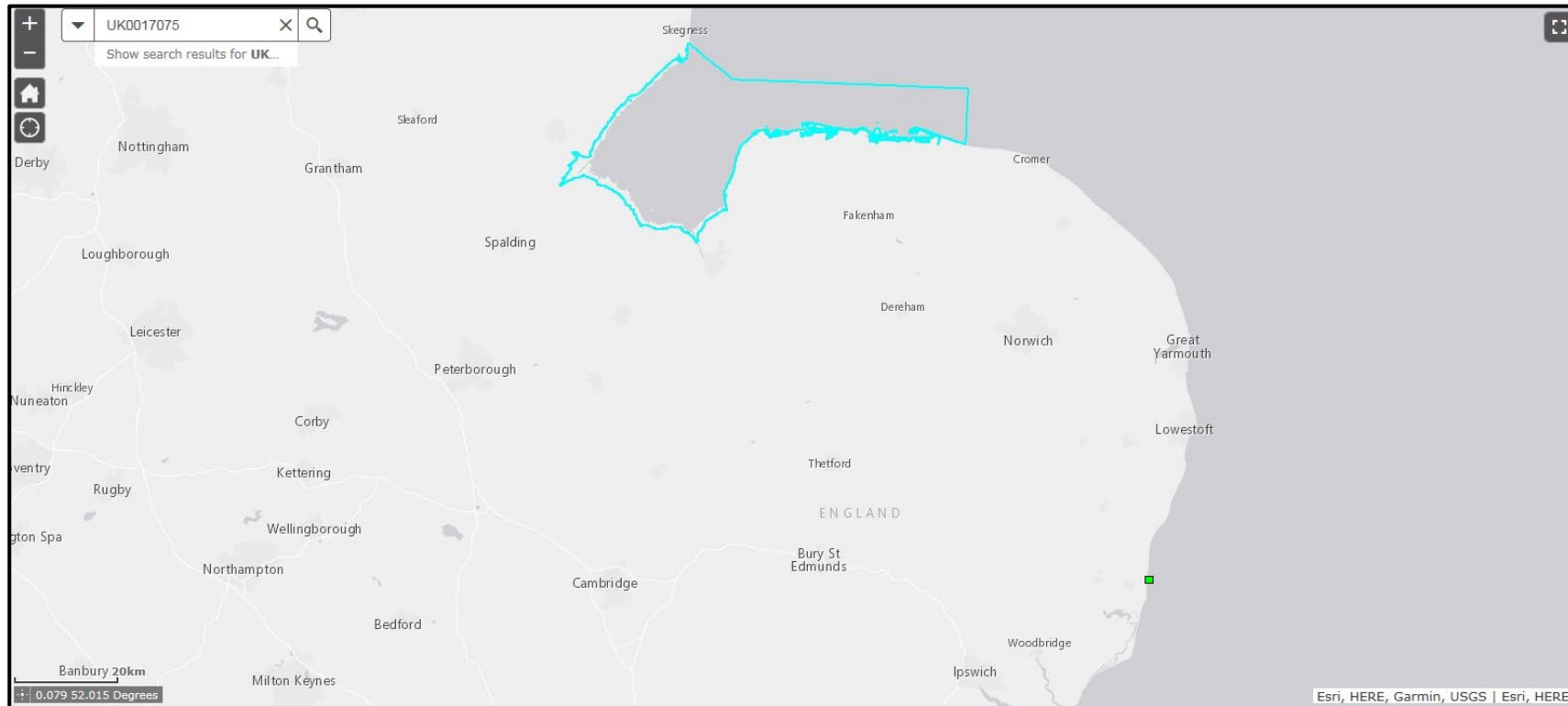


Figure 24: This map shows the location of the Wash and North Norfolk Coast SAC (UK0017075) in relation to SZC. The site is located on the coast, north of and over 50km away from SZC. (Source: [EUNIS 2022](#))

## 4. Continental sites

These sites are considered in the WDA HRAR due to the presence of twaite shad, river lamprey and sea lamprey.



## 4.1. Elbe zwischen Geesthacht und Hamburg SCI



Figure 25: This map shows the location of Elbe zwischen Geesthacht und Hamburg SCI (DE2526332) in relation to SZC. The site is in Germany, over 500km away from SZC. (Source: [EUNIS 2022](#))

## 4.2. Hamburger Unterelbe SCI



Figure 26: This map shows the location of Hamburger Unterelbe SCI (DE2526305) in relation to SZC. The site is in Germany, over 500km away from SZC. (Source: [EUNIS 2022](#))

### 4.3. Mühlenberger Loch/Neßsand SCI



Figure 27: This map shows the location of Mühlenberger Loch/Neßsand SCI (DE2424302) in relation to SZC. The site is in Germany, over 500km away from SZC. (Source: [EUNIS 2022](#))

## 4.4. Nebenarme der Weser mit Strohauser Plate und Juliusplate SCI



Figure 28: This map shows the location of Nebenarme der Weser mit Strohauser Plate und Juliusplate SCI (DE2516331) in relation to SZC. The site is in Germany, over 400km away from SZC. (Source: [EUNIS 2022](#))

## 4.5. Rapfenschutzgebiet Hamburger Stromelbe SCI



Figure 29: This map shows the location of Rapfenschutzgebiet Hamburger Stromelbe SCI (DE2424303) in relation to SZC. This site is located in Germany and over 500km away from SZC. (Source: [EUNIS 2022](#))

## 4.6. Schelde- en Durmeëstuarium van de Nederlandse grens tot Gent SAC

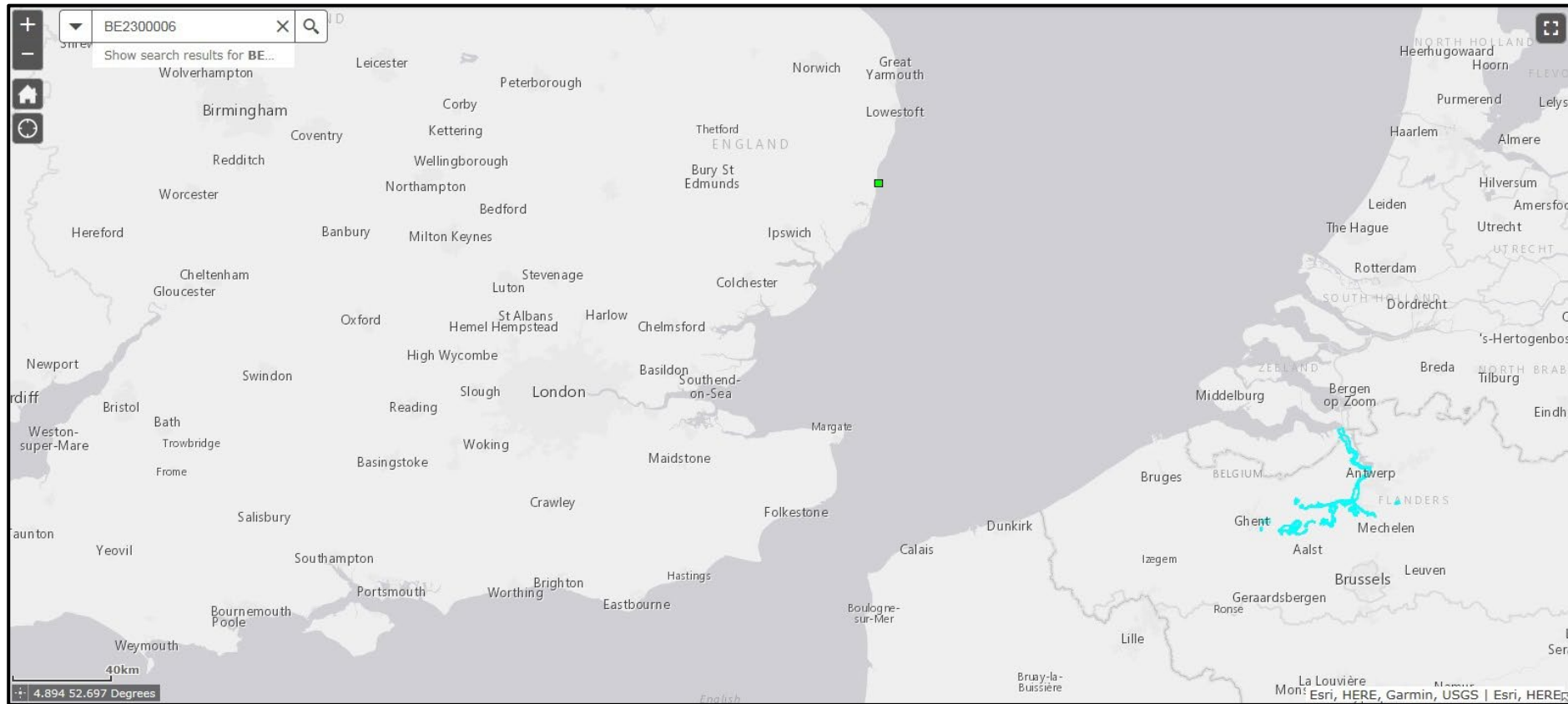


Figure 30: This map shows the location of Schelde- en Durmeëstuarium van de Nederlandse grens tot Gent SAC (BE2300006) in relation to SZC. The site is in the Netherlands, over 150km from SZC. (Source: [EUNIS 2022](#))

## 4.7. Schleswig-Holsteinisches Elbästuar und angrenzende Flächen SCI



Figure 31: This map shows the location of Schleswig-Holsteinisches Elbästuar und angrenzende Flächen SCI (DE2323392) in relation to SZC. The site is in Germany, over 500km from SZC. (Source: [EUNIS 2022](#))



## 4.8. Unterelbe SCI



Figure 32. This map shows the location of Unterelbe SCI (DE2018331) in relation to SZC. The site is in Germany, over 500km away from SZC. (Source: [EUNIS 2022](#))



## 4.9. Unterweser SCI



Figure 33: This map shows the location of Unterweser SCI (DE2316331) in relation to SZC. The site is in Germany, over 450km from SZC. (Source [EUNIS 2022](#))

## 4.10. Weser bei Bremerhaven SCI



Figure 34: This map shows the location of Weser bei Bremerhaven SCI (DE2417370) in relation to SZC. The site is in Germany, over 450km from SZC. (Source: [EUNIS 2022](#))

## References

ENVIRONMENT AGENCY, 2022a.

Environment Agency, 2022. Annex 2 Relevant Conservation Site Details for Proposed Sizewell C Nuclear Power Station. Bristol: Environment Agency.

See [Information regarding three new environmental permit applications for the proposed Sizewell C power station site, Sizewell, Suffolk, IP16 4UR](#) on our Citizen Space website.

ENVIRONMENT AGENCY, 2022b.

Environment Agency, 2022. Annex 3 Ecological narrative of the designated features for Proposed Sizewell C Nuclear Power Station. Bristol: Environment Agency.

See [Information regarding three new environmental permit applications for the proposed Sizewell C power station site, Sizewell, Suffolk, IP16 4UR](#) on our Citizen Space website.

## Would you like to find out more about us or your environment?

Then call us on

03708 506 506 (Monday to Friday, 8am to 6pm)

Email: [enquiries@environment-agency.gov.uk](mailto:enquiries@environment-agency.gov.uk)

Or visit our website

[www.gov.uk/environment-agency](http://www.gov.uk/environment-agency)

### incident hotline

0800 807060 **(24 hours)**

### floodline

0345 988 1188 **(24 hours)**

Find out about call charges (<https://www.gov.uk/call-charges>)

### Environment first

Are you viewing this onscreen? Please consider the environment and only print if absolutely necessary. If you are reading a paper copy, please don't forget to reuse and recycle.