

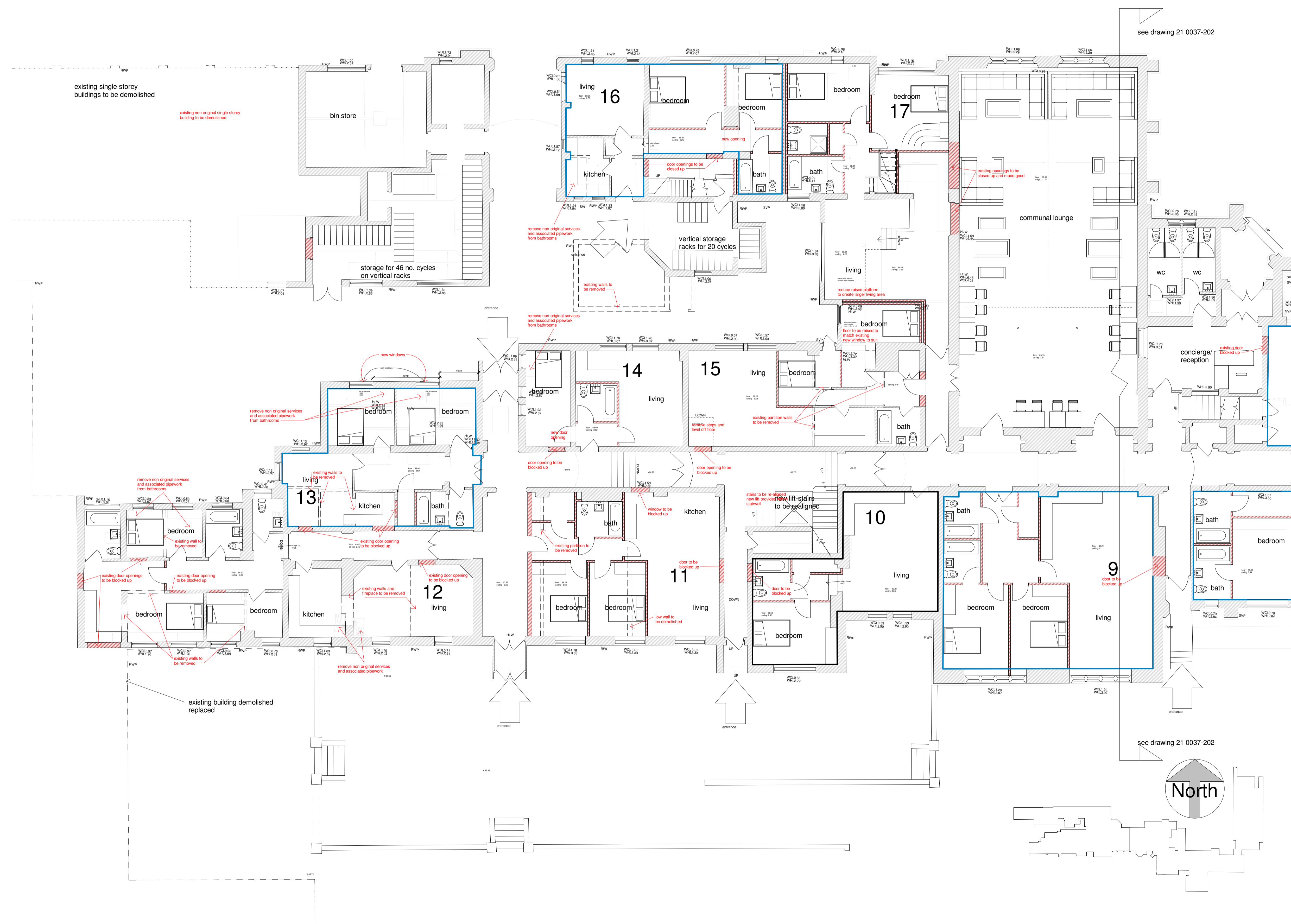
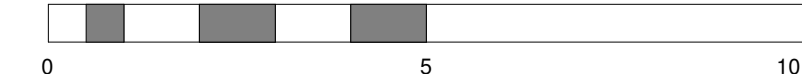
NOTES

New walls and partitions shown in red

see drawing 21 0037-202

see drawing 21 0037-202

North



Ground floor plan (west side)  
1:100

REV	AMENDMENTS	DATE
DRAWN BY		DATE
Author		120418
SCALE (@ A1)		PROJECT NUMBER
As indicated		Project Number
CHECKED BY		APPROVED
Checker		
TITLE		
School building conversion proposed alterations to ground floor plans (west side)		
PROJECT		
Walden School, Saffron Walden		
DRAWING NUMBER		
21 0037-410		