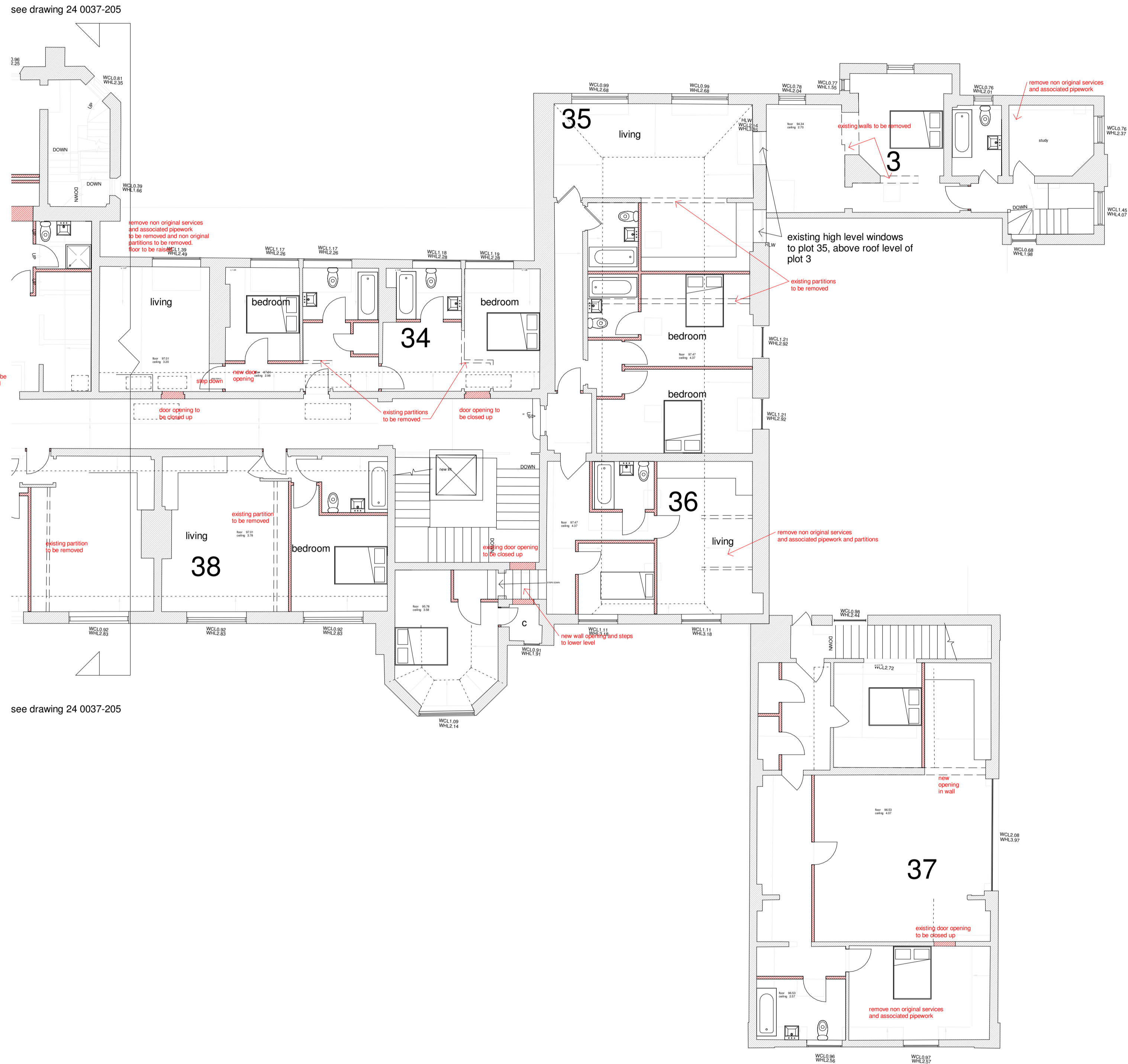
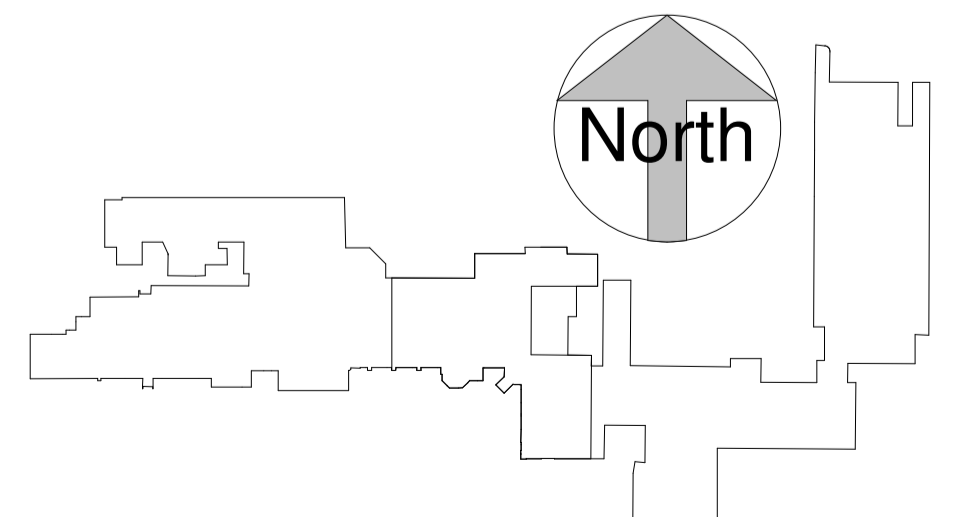


NOTES

New walls and partitions shown in red



Second floor plan (east side)
1 : 100



REV	AMENDMENTS	DATE
DRAWN BY		DATE
Author		03/01/22
SCALE (@ A1)		PROJECT NUMBER
As indicated		Project Number
CHECKED BY	APPROVED	
Checker		
TITLE		
School building conversion proposed alterations to second floor plans (east side)		
PROJECT		
Walden School, Saffron Walden		
DRAWING NUMBER		
21 0037-415		