



Department for Levelling Up, Housing & Communities

Planning applications in England:

Factsheet

January to March 2022

Residential and commercial applications granted (major and minor):

Residential
9,300 - 6% from 2021 Q1

Commercial
1,900 - 2% from 2021 Q1

Householder developments:

Decided
54,400 - 5% from 2021 Q1

As a proportion of all applications decided
57% - 1 pp from 2021 Q1

Permitted development rights (PDRs):

Number of applications:

Prior approval not required
3,600 - 25% from 2021 Q1

Granted
1,500 - 21% from 2021 Q1

Refused
1,400 - 23% from 2021 Q1

County matter applications

Decided
171 - 8% from 2021 Q1

Granted
165 - 4% from 2021 Q1

pp Percentage point

Number of applications:

Received

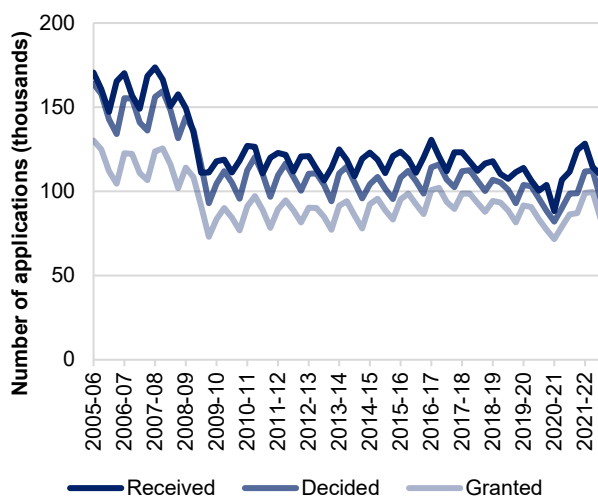
109,900 - 12% from 2021 Q1

Decided

96,000 - 3% from 2021 Q1

Granted

84,000 - 4% from 2021 Q1



Percentage of applications:

Granted

87% - 1 pp from 2021 Q1

The percentage of applications decided in time by development type:

Major applications

85% - 3 pp from 2021 Q1

Minor applications

80% - 4 pp from 2021 Q1

Other applications

85% - 3 pp from 2021 Q1