

Notice of variation and consolidation with introductory note

The Environmental Permitting (England & Wales) Regulations 2016

FCC Environment (UK) Limited

Sutton Courtenay Materials Recycling Facility
Appleford Sidings
Abingdon
Oxfordshire
OX14 4PW

Variation application number

EPR/NP3890VV/V005

Permit number

EPR/NP3890VV

Sutton Courtenay Materials Recycling Facility

Permit number EPR/NP3890VV

Introductory note

This introductory note does not form a part of the notice

Under the Environmental Permitting (England & Wales) Regulations 2016 (schedule 5, part 1, paragraph 19) a variation may comprise a consolidated permit reflecting the variations and a notice specifying the variations included in that consolidated permit.

Schedule 1 of the notice specifies the conditions that have been varied and schedule 2 comprises a consolidated permit which reflects the variations being made. Only the variations specified in schedule 1 are subject to a right of appeal.

Changes introduced by this variation notice:

This permit variation has been issued to implement the relevant requirements Best Available Techniques (BAT) Conclusions set out in implementing decision (EU) 2018/1147 of 10 August 2018.

The Industrial Emissions Directive (IED) came into force on 7 January 2014 with the requirement to implement all relevant Best Available Techniques (BAT) Conclusions as described in the Commission Implementing Decision.

Article 21(3) of the IED requires the Environment Agency to review conditions in permits that it has issued and to ensure that the permit delivers compliance with relevant standards, within four years of the publication of updated decisions on Best Available Techniques (BAT) Conclusions. The BAT Conclusions for Waste Treatment (the BREF) was published on 17 August 2018 following a European Union wide review of BAT, implementing decision (EU) 2018/1147 of 10 August 2018.

The non-hazardous and inert waste: appropriate measures for permitted facilities guidance was published on the gov.uk website on 12 July 2021. This guidance sets out the standards that are relevant to regulated facilities with a permit to store, treat or transfer (or both) non-hazardous and inert wastes.

Brief summary of the permit

Sutton Courtenay Materials Recycling Facility is a waste installation facility that accepts non-hazardous waste for the purpose of producing Refuse Derived Fuel (RDF).

The environment permit allows FCC Environment (UK) Limited to operate the following installation and directly associated activities (DAA):

- Section 5.4 Part A1(b)(ii) - recovery or a mix of recovery and disposal of non-hazardous waste with a capacity exceeding 75 tonnes per day involving pre-treatment of waste for incineration or co-incineration;
- Storage of waste prior to treatment;
- Storage of recovered/baled RDF and segregated metals/recyclables prior to collection and removal from site; and
- Storage of fuel.

The site is also permitted to carry out the following waste operation activities:

- Materials Recycling Facility & Waste Transfer; and
- Storage and repackaging of non-hazardous healthcare waste.

Waste that is received at the site is a mixture of commercial and industrial (C&I) waste and residual municipal waste. This is tipped into the reception hall or the transfer station and pushed up by loading shovels and stored prior to feeding the MRF or loading bulkers in the transfer station for dispatch.

The MRF process is fed by a 360 operator who pre-sorts material pushed up by the loading shovels. Any non-conforming items that are identified in the waste are and removed mechanically for segregation, and where required quarantined. Suitable waste is fed into a shredder which reduces the size to 300mm, this then passes through the MRF processing equipment which screens and sorts the waste. Manual sorting is utilised at various locations for recovering recyclates and the removal of unsuitable/non-conforming waste. Once material is sorted, it is processed through a baling line where it is baled and wrapped in film.

Wrapped bales are removed from the bale-line by a clamp truck and either stored on an impermeable surface or on hard-standing outside of the MRF building. The bales are then loaded onto curtain side trailers for dispatch.

Healthcare wastes are received and delivered to the transfer station where they are transferred to rigid lockable containers that are stored under cover within the Transfer Station building. Other than repackaging, no other treatment of healthcare waste is permitted at the site.

There are no channelled emissions to air, land, water or sewer at the site. Where storage of baled RDF and recyclables are undertaken outside of the building, a sealed drainage system and underground tank will be utilised to capture any contaminated runoff from the storage area.

FCC Environment (UK) Limited operates ISO14001 Management System at the site.

The schedules specify the changes made to the permit.

The status log of a permit sets out the permitting history, including any changes to the permit reference number.

| Status log of the permit | | |
|--|-----------------------|---|
| Description | Date | Comments |
| Application EPR/NP3890VV/A001 | Duly made 15/10/12 | Application for a bespoke permit for a materials recycling facility, clinical and healthcare waste facilities and a food waste transfer station. |
| Additional information received | 17/01/13 | Response to schedule 5 detailing annual quantities and storage quantities, withdrawal of drainage layout plans and revised odour management plan. |
| Additional information received | 25/01/13 | Confirmation of revision of application to exclude proposals for the food Waste transfer station and SR2008No24 Standard rules permit. |
| Permit determined | 11/02/13 | Permit issued to FCC Environment (UK) Limited (EAWML102053). |
| Application EPR/NP3890VV/V002 (variation) | Duly made 28/01/14 | Application to vary the permit for the addition of one waste type. |
| Variation determined EPR/NP3890VV | 03/03/14 | Permit variation issued. |
| Variation Application EPR/NP3890VV/V003 (variation) | Duly made 09/04/14 | Adding transfer station, clinical waste, disposal activities and increasing tonnages. |
| Further information received | 01/05/14 09/05/14 | Revised risk assessment and technical standards. Revised odour management plan. |
| Variation determined EPR/NP3890VV | 21/05/14 | Permit variation issued. |
| Variation Application EPR/NP3890VV/V004 | Duly made 07/02/17 | Application to allow outside storage of baled RDF and process segregated metals and add a section 5.4 Part A(1)(b)(ii) activity to the permit. |

| Status log of the permit | | |
|---|-------------|--|
| Description | Date | Comments |
| Variation EPR/NP3890VV/V004 determined | 31/07/17 | Permit variation issued |
| Environment Agency Non-hazardous Waste Sector Review Variation number EPR/NP3890VV/V005 | 09/09/21 | Non-hazardous waste Sector Review – documents received in response to the Regulation 61 Notice dated 28/04/2021. |
| Additional information received in response to the Request for Further Information (RFI) dated 30/11/2021 | 21/12/21 | Document received in response to questions 1 to 6 of the Request for Further Information, including all parts of the document titled 'SC MRF Appropriate measures 6.2 6.3'. |
| Additional information | 13/04/22 | Information provided by the operator to confirm that they will comply with 'Healthcare waste: appropriate measures for permitted facilities', published 13 July 2020 (updated 08 December 2021). |
| Additional information | 09/05/22 | Email containing photos and manual of the bag plants serving the RDF production process. |
| Environment Agency Non-hazardous Waste Sector Review Variation number EPR/NP3890VV/V005 Permit determined EPR/NP3890VV Billing references: VP3204MS; EAWML 102053 | 09/06/22 | Varied and consolidated permit issued in modern condition format. |

End of introductory note

Notice of variation and consolidation

The Environmental Permitting (England and Wales) Regulations 2016

The Environment Agency in exercise of its powers under regulation 20 of the Environmental Permitting (England and Wales) Regulations 2016 varies

Permit number

EPR/NP3890VV

Issued to

FCC Environment (UK) Limited (“the operator”)

whose registered office

**Ground Floor West
900 Pavilion Drive
Northampton Business Park
Northampton
NN4 7RG**

company registration number **02902416**

to operate regulated facilities at

**Sutton Courtenay Materials Recycling Facility
Appleford Sidings
Abingdon
Oxfordshire
OX14 4PW**

to the extent set out in the schedules.

The notice shall take effect from 09/06/2022.

| Name | Date |
|----------------|------------|
| Peter Maksymiw | 09/06/2022 |

Authorised on behalf of the Environment Agency

Schedule 1

The following conditions and tables were varied as a result of the Environment Agency Initiated Variation:

- Condition 2.1.2 has been added to specify that waste received under the installation activity must be kept separate from other wastes.
- Condition 2.3.3 has been amended to include the new list of waste table (Table S2.2) that was derived from splitting Table S2.1 into two tables (one for the Installation/RDF production activity and one for the Waste Operation/MRF activity). The follow-on table has been renumbered as Table S2.3.
- Condition 3.3.2 has been deleted as the site has an approved Odour Management Plan.
- Condition 3.5.1 has been amended to replace the point source emission to sewer with process monitoring of the dust abatement units. The operator has opted not to discharge to sewer.
- Conditions 3.5.3 and 3.5.4 have been deleted as there is no longer need for emission monitoring of discharge to sewer.
- Condition 3.6.2 has been deleted as the site has an approved Pest Management Plan.
- Condition 3.7.2 has been deleted as the site has an approved Fire Prevention Plan.
- Condition 4.3.2 has been added because it is a relevant condition for waste operation activities.
- Condition 4.3.3 has been amended to include the notification requirements specified in condition 4.3.2.
- Condition 4.4.2 has been amended by adding the texts “without delay”.
- Table S1.1 as referenced in Conditions 2.1.1 and 2.1.2 has been amended to clearly define the activities that are undertaken at the site and to apply relevant limits to them. The activities were renumbered as a result.
- Table S1.2 as referenced in Conditions 2.3.1 and 2.3.2 has been amended to incorporate operating techniques documents submitted in response to the Regulation 61 Notice and additional information received in response to the RFI.
- Table S1.3 as referenced in Condition 2.4.1 has been amended to remove need for monitoring of site effluent discharge to sewer as the operator opted not to discharge to sewer.
- Table S2.1 as referenced in Condition 2.3.3 has been split into two tables (tables S2.1 and S2.2) to clearly identify wastes that are received under the RDF production activity from those that are received under the material recovery activity. Some of the waste types that are not appropriate to the permitted activities have been removed. The requirement to accept food waste was also removed - the operator has agreed that food waste related codes should be removed.
- Table S3.1 as referenced previously in Condition 3.5.1 (emission to sewer table) has been replaced with the process monitoring table.
- Table S4.1 has been amended by adding the reporting requirements for process monitoring to the table.
- Tables S4.2 – S4.4 have been added to implement the reporting requirements of the permit.
- Schedule 6 as referenced in condition 4.4.1 has been amended to add additional interpretation relevant to the changes made to the permit.

Schedule 2 – consolidated permit

Consolidated permit issued as a separate document.

Permit

The Environmental Permitting (England and Wales) Regulations 2016

Permit number

EPR/NP3890VV

This is the consolidated permit referred to in the variation and consolidation notice for application EPR/NP3890VV/V005 authorising,

FCC Environment (UK) Limited (“the operator”),

whose registered office is

**Ground Floor West
900 Pavilion Drive
Northampton Business Park
Northampton
NN4 7RG**

company registration number **02902416**

to operate an installation at

**Sutton Courtenay Materials Recycling Facility
Appleford Sidings
Abingdon
Oxfordshire
OX14 4PW**

to the extent authorised by and subject to the conditions of this permit.

| Name | Date |
|-----------------------|-------------------|
| Peter Maksymiw | 09/06/2022 |

Authorised on behalf of the Environment Agency.

Conditions

Management

1.1 General management

- 1.1.1 The operator shall manage and operate the activities:
- (a) in accordance with a written management system that identifies and minimises risks of pollution, including those arising from operations, maintenance, accidents, incidents, non-conformances, closure and those drawn to the attention of the operator as a result of complaints; and
 - (b) using sufficient competent persons and resources.
- 1.1.2 Records demonstrating compliance with condition 1.1.1 shall be maintained.
- 1.1.3 Any person having duties that are or may be affected by the matters set out in this permit shall have convenient access to a copy of it kept at or near the place where those duties are carried out.
- 1.1.4 The operator shall comply with the requirements of an approved competence scheme.

1.2 Energy efficiency

- 1.2.1 For the following activities referenced in schedule 1, table S1.1 (AR1 – AR4), the operator shall:
- (a) take appropriate measures to ensure that energy is used efficiently in the activities;
 - (b) review and record at least every four years whether there are suitable opportunities to improve the energy efficiency of the activities; and
 - (c) take any further appropriate measures identified by a review.

1.3 Efficient use of raw materials

- 1.3.1 For the following activities referenced in schedule 1, table S1.1 (AR1 – AR4), the operator shall:
- (a) take appropriate measures to ensure that raw materials and water are used efficiently in the activities;
 - (b) maintain records of raw materials and water used in the activities;
 - (c) review and record at least every four years whether there are suitable alternative materials that could reduce environmental impact or opportunities to improve the efficiency of raw material and water use; and
 - (d) take any further appropriate measures identified by a review.

1.4 Avoidance, recovery and disposal of wastes produced by the activities

- 1.4.1 The operator shall take appropriate measures to ensure that:
- (a) the waste hierarchy referred to in Article 4 of the Waste Framework Directive is applied to the generation of waste by the activities; and
 - (b) any waste generated by the activities is treated in accordance with the waste hierarchy referred to in Article 4 of the Waste Framework Directive; and
 - (c) where disposal is necessary, this is undertaken in a manner which minimises its impact on the environment.

- 1.4.2 The operator shall review and record at least every four years whether changes to those measures should be made and take any further appropriate measures identified by a review.

2 Operations

2.1 Permitted activities

- 2.1.1 The operator is only authorised to carry out the activities specified in schedule 1 table S1.1 (the “activities”).
- 2.1.2 For the following activities referenced in schedule 1, table S1.1 (AR1 – AR4), waste authorised by this permit shall be clearly distinguished from any other waste on the site.

2.2 The site

- 2.2.1 The activities shall not extend beyond the site, being the land shown edged in green on the site plan at schedule 7 to this permit.

2.3 Operating techniques

- 2.3.1 The activities shall, subject to the conditions of this permit, be operated using the techniques and in the manner described in the documentation specified in schedule 1, table S1.2, unless otherwise agreed in writing by the Environment Agency.
- 2.3.2 If notified by the Environment Agency that the activities are giving rise to pollution, the operator shall submit to the Environment Agency for approval within the period specified, a revision of any plan or other documentation (“plan”) specified in schedule 1, table S1.2 or otherwise required under this permit which identifies and minimises the risks of pollution relevant to that plan, and shall implement the approved revised plan in place of the original from the date of approval, unless otherwise agreed in writing by the Environment Agency.
- 2.3.3 Waste shall only be accepted if:
- (a) it is of a type and quantity listed in schedule 2 tables S2.1, S2.2 and S2.3; and
 - (b) it conforms to the description in the documentation supplied by the producer and holder.
- 2.3.4 The operator shall ensure that where waste produced by the activities is sent to a relevant waste operation, that operation is provided with the following information, prior to the receipt of the waste:
- (a) the nature of the process producing the waste;
 - (b) the composition of the waste;
 - (c) the handling requirements of the waste;
 - (d) the hazardous property associated with the waste, if applicable; and
 - (e) the waste code of the waste.
- 2.3.5 The operator shall ensure that where waste produced by the activities is sent to a landfill site, it meets the waste acceptance criteria for that landfill.

2.4 Pre-operational conditions

- 2.4.1 The operations specified in schedule 1 table S1.3 shall not commence until the measures specified in that table have been completed.

3 Emissions and monitoring

3.1 Emissions to water, air or land

- 3.1.1 There shall be no point source emissions to water, air or land.
- 3.1.2 The limits given in schedule 3 shall not be exceeded.
- 3.1.3 For the following activities referenced in schedule 1, table S1.1 (AR1 – AR4), periodic monitoring shall be carried out at least once every 5 years for groundwater and 10 years for soil, unless such monitoring is based on a systematic appraisal of the risk of contamination.

3.2 Emissions of substances not controlled by emission limits

- 3.2.1 Emissions of substances not controlled by emission limits (excluding odour) shall not cause pollution. The operator shall not be taken to have breached this condition if appropriate measures, including, but not limited to, those specified in any approved emissions management plan, have been taken to prevent or where that is not practicable, to minimise, those emissions.
- 3.2.2 The operator shall:
 - (a) if notified by the Environment Agency that the activities are giving rise to pollution, submit to the Environment Agency for approval within the period specified, an emissions management plan which identifies and minimises the risks of pollution from emissions of substances not controlled by emission limits;
 - (b) implement the approved emissions management plan, from the date of approval, unless otherwise agreed in writing by the Environment Agency.
- 3.2.3 All liquids in containers, whose emission to water or land could cause pollution, shall be provided with secondary containment, unless the operator has used other appropriate measures to prevent or where that is not practicable, to minimise, leakage and spillage from the primary container.

3.3 Odour

- 3.3.1 Emissions from the activities shall be free from odour at levels likely to cause pollution outside the site, as perceived by an authorised officer of the Environment Agency, unless the operator has used appropriate measures, including, but not limited to, those specified in any approved odour management plan, to prevent or where that is not practicable to minimise the odour.

3.4 Noise and vibration

- 3.4.1 Emissions from the activities shall be free from noise and vibration at levels likely to cause pollution outside the site, as perceived by an authorised officer of the Environment Agency, unless the operator has used appropriate measures, including, but not limited to, those specified in any approved noise and vibration management plan to prevent or where that is not practicable to minimise the noise and vibration.
- 3.4.2 The operator shall:
 - (a) if notified by the Environment Agency that the activities are giving rise to pollution outside the site due to noise and vibration, submit to the Environment Agency for approval within the period specified, a noise and vibration management plan which identifies and minimises the risks of pollution from noise and vibration;
 - (b) implement the approved noise and vibration management plan, from the date of approval, unless otherwise agreed in writing by the Environment Agency.

3.5 Monitoring

3.5.1 The operator shall, unless otherwise agreed in writing by the Environment Agency, undertake the monitoring specified in the following tables in schedule 3 to this permit:

(a) process monitoring specified in table S3.1.

3.5.2 The operator shall maintain records of all monitoring required by this permit including records of the taking and analysis of samples, instrument measurements (periodic and continual), calibrations, examinations, tests and surveys and any assessment or evaluation made on the basis of such data.

3.6 Pests

3.6.1 The activities shall not give rise to the presence of pests which are likely to cause pollution, hazard or annoyance outside the boundary of the site. The operator shall not be taken to have breached this condition if appropriate measures, including, but not limited to, those specified in any approved pests management plan, have been taken to prevent or where that is not practicable, to minimise the presence of pests on the site.

3.7 Fire prevention

3.7.1 The operator shall take all appropriate measures to prevent fires on site and minimise the risk of pollution from them including, but not limited to, those specified in any approved fire prevention plan.

4 Information

4.1 Records

4.1.1 All records required to be made by this permit shall:

(a) be legible;

(b) be made as soon as reasonably practicable;

(c) if amended, be amended in such a way that the original and any subsequent amendments remain legible, or are capable of retrieval; and

(d) be retained, unless otherwise agreed in writing by the Environment Agency, for at least 6 years from the date when the records were made, or in the case of the following records until permit surrender:

(i) off-site environmental effects; and

(ii) matters which affect the condition of the land and groundwater.

4.1.2 The operator shall keep on site all records, plans and the management system required to be maintained by this permit, unless otherwise agreed in writing by the Environment Agency.

4.2 Reporting

4.2.1 The operator shall send all reports and notifications required by the permit to the Environment Agency using the contact details supplied in writing by the Environment Agency.

4.2.2 For the following activities referenced in schedule 1, table S1.1 (AR1 to AR4), a report or reports on the performance of the activities over the previous year shall be submitted to the Environment Agency by 31 January (or other date agreed in writing by the Environment Agency) each year. The report(s) shall include as a minimum:

(a) a review of the results of the monitoring and assessment carried out in accordance with the permit including an interpretive review of that data;

- (b) the annual production/treatment data set out in schedule 4 table S4.2; and
- (c) the performance parameters set out in schedule 4 table S4.3 using the forms specified in table S4.4 of that schedule.

4.2.3 Within 28 days of the end of the reporting period the operator shall, unless otherwise agreed in writing by the Environment Agency, submit reports of the monitoring and assessment carried out in accordance with the conditions of this permit, as follows:

- (a) in respect of the parameters and emission points specified in schedule 4 table S4.1;
- (b) for the reporting periods specified in schedule 4 table S4.1 and using the forms specified in schedule 4 table S4.4; and
- (c) giving the information from such results and assessments as may be required by the forms specified in those tables.

4.2.4 The operator shall, unless notice under this condition has been served within the preceding four years, submit to the Environment Agency, within six months of receipt of a written notice, a report assessing whether there are other appropriate measures that could be taken to prevent, or where that is not practicable, to minimise pollution.

4.2.5 Within 1 month of the end of each quarter, the operator shall submit to the Environment Agency using the form made available for the purpose, the information specified on the form relating to the site and the waste accepted and removed from it during the previous quarter.

4.3 Notifications

4.3.1 In the event:

- (a) that the operation of the activities gives rise to an incident or accident which significantly affects or may significantly affect the environment, the operator must immediately—
 - (i) inform the Environment Agency,
 - (ii) take the measures necessary to limit the environmental consequences of such an incident or accident, and
 - (iii) take the measures necessary to prevent further possible incidents or accidents;
- (b) of a breach of any permit condition the operator must immediately—
 - (i) inform the Environment Agency, and
 - (ii) take the measures necessary to ensure that compliance is restored within the shortest possible time;
- (c) of a breach of permit condition which poses an immediate danger to human health or threatens to cause an immediate significant adverse effect on the environment, the operator must immediately suspend the operation of the activities or the relevant part of it until compliance with the permit conditions has been restored.

4.3.2 For the following activities referenced in schedule 1, table S1.1, AR5 to AR6, the Environment Agency shall be notified without delay following the detection of:

- (a) any malfunction, breakdown or failure of equipment or techniques, accident, or emission of a substance not controlled by an emission limit which has caused, is causing or may cause significant pollution;
- (b) the breach of a limit specified in the permit; or
- (c) any significant adverse environmental effects.

4.3.3 Any information provided under conditions 4.3.1 and 4.3.2 shall be confirmed by sending the information listed in schedule 5 to this permit within the time period specified in that schedule.

- 4.3.4 Where the Environment Agency has requested in writing that it shall be notified when the operator is to undertake monitoring and/or spot sampling, the operator shall inform the Environment Agency when the relevant monitoring and/or spot sampling is to take place. The operator shall provide this information to the Environment Agency at least 14 days before the date the monitoring is to be undertaken.
- 4.3.5 The Environment Agency shall be notified within 14 days of the occurrence of the following matters, except where such disclosure is prohibited by Stock Exchange rules:
- Where the operator is a registered company:
- (a) any change in the operator's trading name, registered name or registered office address; and
 - (b) any steps taken with a view to the operator going into administration, entering into a company voluntary arrangement or being wound up.
- Where the operator is a corporate body other than a registered company:
- (a) any change in the operator's name or address; and
 - (b) any steps taken with a view to the dissolution of the operator.
- In any other case:
- (a) the death of any of the named operators (where the operator consists of more than one named individual);
 - (b) any change in the operator's name(s) or address(es); and
 - (c) any steps taken with a view to the operator, or any one of them, going into bankruptcy, entering into a composition or arrangement with creditors, or, in the case of them being in a partnership, dissolving the partnership.
- 4.3.6 Where the operator proposes to make a change in the nature or functioning, or an extension of the activities, which may have consequences for the environment and the change is not otherwise the subject of an application for approval under the Regulations or this permit:
- (a) the Environment Agency shall be notified at least 14 days before making the change; and
 - (b) the notification shall contain a description of the proposed change in operation.
- 4.3.7 The Environment Agency shall be given at least 14 days' notice before implementation of any part of the site closure plan.

4.4 Interpretation

- 4.4.1 In this permit the expressions listed in schedule 6 shall have the meaning given in that schedule.
- 4.4.2 In this permit references to reports and notifications mean written reports and notifications, except where reference is made to notification being made "immediately" or "without delay", in which case it may be provided by telephone.

Schedule 1 – Operations

| Table S1.1 activities | | | |
|-------------------------------------|--|---|--|
| Activity reference | Activity listed in Schedule 1 of the EP Regulations | Description of specified activity and WFD Annex I and II operations | Limits of specified activity and waste types |
| AR1 | S5.4 Part A(1)(b)(ii) Recovery or a mix of recovery and disposal of non-hazardous waste with capacity exceeding 75 tonnes per day involving pre-treatment of waste for incineration or co-incineration. | R3: Recycling/ reclamation of organic substances which are not used as solvents. R4: Recycling/ reclamation of metals and metal compounds. | Physical treatment of solid non-hazardous waste to produce Refuse Derived Fuel (RDF). Treatment operations shall be limited to physical treatment including manual sorting, separation, screening, baling, shredding, crushing, and compaction or blending for the purpose of producing RDF for recovery. Treatment shall be carried out in an enclosed building and on an impermeable surface with sealed drainage system. Waste types suitable for treatment are limited to those non-hazardous wastes specified in table S2.1. |
| Directly Associated Activity | | | |
| AR2 | Storage of waste prior to pre-treatment. | R13: Storage of waste pending any of the operations numbered R1 to R12 (excluding temporary storage, pending collection, on the site where it is produced). | Receipt and storage of non-hazardous waste pending pre-treatment of waste for incineration or co-incineration. Storage of waste in an enclosed building and on an impermeable surface with sealed drainage system. Waste types suitable for acceptance are limited to those non-hazardous wastes specified in table S2.1. |
| AR3 | Raw materials storage | Storage of raw materials, including lubrication oil and diesel. | From the receipt of raw materials to despatch for use within the facility. |
| AR4 | N/A | Storage of recovered/baled RDF and segregated metals/recyclables prior to collection and removal off site. | Storage of recovered waste shall take place in an enclosed building and on an impermeable surface with sealed drainage system except for baled and wrapped RDF and processed segregated metals which may be stored outside here written approval is given by the Environment Agency in accordance with pre-operational condition 1 in table S1.3. |

| Table S1.1 activities | | | |
|---|--|--|---|
| Activity reference | Activity listed in Schedule 1 of the EP Regulations | Description of specified activity and WFD Annex I and II operations | Limits of specified activity and waste types |
| Activity reference | Description of activities for waste operations | | Limits of activities |
| AR5 (Materials Recycling Facility & Waste Transfer) | <p>R3: Recycling/reclamation of organic substances which are not used as solvents.</p> <p>R4: Recycling/reclamation of metals and metal compounds.</p> <p>R5: Recycling/reclamation of other inorganic compounds.</p> <p>D9: Physico-chemical treatment not specified elsewhere which results in final compounds or mixtures which are discarded by means of any of the operations numbered D1 to D12.</p> <p>D14: Repackaging prior to submission to any of the operations numbered D1 to D13.</p> <p>D15: Storage pending any of the operations numbered D1 to D14 (excluding temporary storage, pending collection, on the site where the waste is produced).</p> <p>R13: Storage of waste pending any of the operations numbered R1 to R12 (excluding temporary storage, pending collection, on the site where the waste is produced).</p> | | <p>Storage, transfer and treatment of non-hazardous waste only.</p> <p>All storage, transfer and treatment of waste shall be carried out inside a building except for processed segregated metals which may be stored outside where written approval is given by the Environment Agency in accordance with pre-operational condition 1 in table S1.3.</p> <p>Treatment consisting only of manual sorting, separation, screening, baling, shredding and compaction of waste into different components for recovery.</p> <p>Waste shall be stored and treated on an impermeable surface with sealed drainage system.</p> <p>Treatment for disposal shall be no more than 50 tonnes per day.</p> <p>Waste types suitable for acceptance are limited to those non-hazardous wastes specified in table S2.2.</p> |
| AR6 (Healthcare waste facility) | <p>R13: Storage of waste pending any of the operations numbered R1 to R12 (excluding temporary storage, pending collection, on the site where it is produced)</p> <p>R12 Exchange of waste for submission to any of the operations numbered R1 to R11</p> <p>D15: Storage pending any of the operations numbered D1 to D14 (excluding temporary storage, pending collection, on the site where the waste is produced)</p> <p>D14: Repackaging prior to submission to any of the operations numbered D1 to D13</p> | | <p>All permitted waste shall either be stored:</p> <ul style="list-style-type: none"> ▪ within a building provided with an impermeable surface with sealed drainage system; or ▪ within sealed containers located on an impermeable surface with sealed drainage system. <p>Sealed containers shall be kept locked when not being loaded or unloaded.</p> <p>Waste shall not be transferred, removed or separated from its primary packaging (for example bags, bins, boxes and blister packs).</p> <p>Repackaging of waste shall not change either the maximum storage times for waste on site or the amount that can be stored.</p> <p>Repackaging is limited to:</p> <ul style="list-style-type: none"> • taking a waste package (for example a bag, drum or box) out of one cart or bulk container (for example a skip) and placing it into another cart or bulk container (for example, a skip) • taking a waste package from a cart or bulk container (for example, skip) and placing it onto a pallet or vehicle |

| Table S1.1 activities | | | |
|-----------------------|---|---|---|
| Activity reference | Activity listed in Schedule 1 of the EP Regulations | Description of specified activity and WFD Annex I and II operations | Limits of specified activity and waste types |
| | | | <ul style="list-style-type: none"> taking a waste package from a pallet and placing it into a cart or bulk container (for example, skip) <p>Wastes which arrive in bags or other non-rigid containers shall be transferred into rigid containers immediately.</p> <p>Rigid containers for the storage of waste shall be of a design that:</p> <ul style="list-style-type: none"> will prevent the escape of any liquid; has a lockable lid or other means of securing the container. <p>The transfer of waste from vehicles or containers into other vehicles or containers shall only take place on areas with an impermeable surface with sealed drainage system.</p> <p>Washing and disinfection of reusable containers shall take place within a building on areas of impermeable surface with sealed drainage system.</p> <p>Non-infectious offensive waste shall be stored for no longer than 7 days if outside, or for no longer than 14 days if stored in a building.</p> <p>Waste types as specified in Table S2.3.</p> |

| Table S1.2 Operating techniques | | |
|---|---|---------------|
| Description | Parts | Date Received |
| Variation Application EPR/NP3890VV/V003 | Document Ref: 1591/R/005/3, Environmental Permit Application Sutton Courtenay Materials Recycling & Transfer Facility, Sutton Courtenay, Oxfordshire, Environmental Risk Assessment, dated May 2014 | 01/05/2014 |
| Variation Application EPR/NP3890VV/V003 | Technical Standards ref: 1591/R/004/2 RH 010514, Environmental Permit Application, Sutton Courtenay Materials Recycling & Transfer Facility, Sutton Courtenay, Oxfordshire, Technical Standards, dated May 2014 | 01/05/2014 |
| Variation Application EPR/NP3890VV/V003 | Document ref: 1591/R/005/4 Appendix A Sutton Courtenay Materials Recycling & Transfer Facility Environmental Permit Application Odour Management Plan | 09/05/2014 |
| Variation Application EPR/NP3890VV/V004 | Variation Application Form Responses to questions in Part C2 and C3 and supporting information – excluding Fire Prevention Plan and Odour Management plan. | |
| Additional information in response to Schedule 5 notice issued 30/03/2017 | Response to questions 1, 2, 3, 4, 5, 6, 7, 8, 9, 10, 11, 12, 13, 14, 15, 16, 17 and 18. | 12/05/2017 |

| Table S1.2 Operating techniques | | |
|---|---|----------------------|
| Description | Parts | Date Received |
| | Site Integrated Management System procedure EMS-3-13, 13-SCMRF – Pest Management Odour Management Plan May 2017 Report No 10129-R03 Drawing Fire Prevention Plan – Plan 1 dated 02/02/2017 | |
| Additional information received in response to email request sent 25/05/2017 | Response to question 1(a), 1(b), 1(c), 1(d), 2(a), 2(b), 3(a) and 3(b). Sutton Courtenay MRF Fire Prevention Plan, dated 17 th June 2017. | 16/06/2017 |
| Application EPR/NP3890VV/V005 | Documents received in response to the Regulation 61 Notice including the response letter, site plan titled 'Plan 1', drawing number 427A531, dated 02.09.21 and all parts of the Annex 1 of the Regulation 61 Notice. | 09/09/2021 |
| Additional information received in response to the Request for Further Information (RFI) dated 30/11/2021 | Document received in response to questions 1 to 6 of the Request for Further Information, including all parts of the document titled 'SC MRF Appropriate measures 6.2 6.3'. | 21/12/2021 |
| Additional information | Information provided by the operator to confirm that they will comply with ' Healthcare waste: appropriate measures for permitted facilities ', published 13 July 2020 (updated 08 December 2021) | 13/04/2022 |

| Table S1.3 Pre-operational measures for future development | | |
|---|---|---|
| Reference | Operation | Pre-operational measures |
| 1 | Storage of baled and wrapped Refuse Derived Fuel (RDF) and processed segregated metals produced outside of building under activities AR1 and AR4 in table S1.1. | Storage of baled and wrapped Refuse Derived Fuel (RDF) and processed segregated metals outside of a building is only allowed when sealed drainage system is in place that ensures surface water runoff from the outside storage area when used for storage of RDF and processed segregated metals does not enter nearby groundwater or surface water courses. Proposals for sealed drainage system shall be submitted to the Environment Agency in writing. Written approval of the proposals from the Environment Agency must be obtained prior to the commencement of outside storage of RDF and processed segregated metals. |
| 2 | Re-commencement of the operations authorised under Activity AR1 and MRF part of Activity AR5 of Table S1.1 | Prior to the re-commencement of the operations authorised under Activity AR1 and MRF part of Activity AR5 of Table S1.1, the operator shall notify Environment Agency in writing stating the date when the activities will re-commence. |
| 3 | Process monitoring and reporting specified in Tables S3.1 and S4.1 | Following the re-commencement of the operations authorised under Activity AR1 and MRF part of Activity AR5 of Table S1.1, the operator shall commence the process monitoring and reporting requirements specified in Tables S3.1 and S4.1 respectively. |

Schedule 2 – Waste types, raw materials and fuels

| Table S2.1 Permitted waste types and quantities under Activities AR1 and AR2 of Table S1.1 - storage and treatment of waste to produce RDF. | |
|---|---|
| Maximum Quantities | |
| The maximum quantity of all waste accepted at the site (including that under Table S2.2) shall be less than 160000 tonnes per year. | |
| Exclusions | |
| Wastes having any of the following characteristics shall not be accepted: | |
| <ul style="list-style-type: none"> • Consisting solely or mainly of dusts, powders or loose fibres • Wastes that are in a form which is either sludge or liquid | |
| Waste code | Description |
| 03 | WASTES FROM WOOD PROCESSING AND THE PRODUCTION OF PANELS AND FURNITURE, PULP, PAPER AND CARDBOARD |
| 03 01 | wastes from wood processing and the production of panels and furniture |
| 03 01 01 | waste bark and cork |
| 03 03 | wastes from pulp, paper and cardboard production and processing |
| 03 03 01 | waste bark and wood |
| 03 03 07 | mechanically separated rejects from pulping of waste paper and cardboard |
| 03 03 08 | wastes from sorting of paper and cardboard destined for recycling |
| 03 03 10 | fibre rejects, fibre-, filler- and coating-sludges from mechanical separation |
| 12 | WASTES FROM SHAPING AND PHYSICAL AND MECHANICAL SURFACE TREATMENT OF METALS AND PLASTICS |
| 12 01 | wastes from shaping and physical and mechanical surface treatment of metals and plastics |
| 12 01 05 | plastics shavings and turnings |
| 15 | WASTE PACKAGING; ABSORBENTS, WIPING CLOTHS, FILTER MATERIALS AND PROTECTIVE CLOTHING NOT OTHERWISE SPECIFIED |
| 15 01 | packaging (including separately collected municipal packaging waste) |
| 15 01 01 | paper and cardboard packaging |
| 15 01 02 | plastic packaging |
| 15 01 03 | wooden packaging |
| 15 01 05 | composite packaging |
| 15 01 06 | mixed packaging |
| 15 01 09 | textile packaging |
| 17 | CONSTRUCTION AND DEMOLITION WASTES (INCLUDING EXCAVATED SOIL FROM CONTAMINATED SITES) |
| 17 02 | wood, glass and plastic |
| 17 02 01 | wood |
| 17 02 03 | plastic |

Table S2.1 Permitted waste types and quantities under Activities AR1 and AR2 of Table S1.1 - storage and treatment of waste to produce RDF.

Maximum Quantities

The maximum quantity of all waste accepted at the site (including that under Table S2.2) shall be less than 160000 tonnes per year.

Exclusions

Wastes having any of the following characteristics shall not be accepted:

- Consisting solely or mainly of dusts, powders or loose fibres
- Wastes that are in a form which is either sludge or liquid

| Waste code | Description |
|--------------|--|
| 19 | WASTES FROM WASTE MANAGEMENT FACILITIES, OFF-SITE WASTE WATER TREATMENT PLANTS AND THE PREPARATION OF WATER INTENDED FOR HUMAN CONSUMPTION AND WATER FOR INDUSTRIAL USE |
| 19 02 | wastes from physico/chemical treatments of waste (including dechromatation, decyanidation, neutralisation) |
| 19 02 03 | premixed wastes composed only of non-hazardous wastes |
| 19 02 10 | combustible wastes other than those mentioned in 19 02 08 and 19 02 09 |
| 19 05 | wastes from aerobic treatment of solid wastes |
| 19 05 01 | non-composted fraction of municipal and similar wastes |
| 19 12 | wastes from the mechanical treatment of waste (for example sorting, crushing, compacting, pelletising) not otherwise specified |
| 19 12 01 | paper and cardboard |
| 19 12 04 | plastic and rubber |
| 19 12 07 | wood other than that mentioned in 19 12 06 |
| 19 12 08 | textiles |
| 19 12 10 | combustible waste (refuse derived fuel) |
| 19 12 12 | other wastes (including mixtures of materials) from mechanical treatment of wastes other than those mentioned in 18 12 11 |
| 20 | MUNICIPAL WASTES (HOUSEHOLD WASTE AND SIMILAR COMMERCIAL, INDUSTRIAL AND INSTITUTIONAL WASTES) INCLUDING SEPARATELY COLLECTED FRACTIONS |
| 20 01 | separately collected fractions (except 15 01) |
| 20 01 01 | paper and cardboard |
| 20 01 10 | clothes |
| 20 01 11 | textiles |
| 20 01 38 | wood other than that mentioned in 20 01 37 |
| 20 01 39 | plastics |
| 20 03 | other municipal wastes |
| 20 03 01 | mixed municipal waste |
| 20 03 02 | waste from markets |
| 20 03 03 | street-cleaning residues |

Table S2.2 Permitted waste types and quantities under Activity AR5 of Table S1.1 – recycling and transfer of non-hazardous waste.

Maximum Quantities

The maximum quantity of all waste accepted at the site (including that under Table S2.1) shall be less than 160000 tonnes per year.

Exclusions

Wastes having any of the following characteristics shall not be accepted:

- Consisting solely or mainly of dusts, powders or loose fibres
- Wastes that are in a form which is either sludge or liquid

| Waste code | Description |
|--|---|
| 03 WASTES FROM WOOD PROCESSING AND THE PRODUCTION OF PANELS AND FURNITURE, PULP, PAPER AND CARDBOARD | |
| 03 01 | wastes from wood processing and the production of panels and furniture |
| 03 01 01 | waste bark and cork |
| 03 03 | wastes from pulp, paper and cardboard production and processing |
| 03 03 01 | waste bark and wood |
| 03 03 07 | mechanically separated rejects from pulping of waste paper and cardboard |
| 03 03 08 | wastes from sorting of paper and cardboard destined for recycling |
| 03 03 10 | fibre rejects, fibre-, filler- and coating-sludges from mechanical separation |
| 10 WASTES FROM THERMAL PROCESSES | |
| 10 11 | wastes from manufacture of glass and glass products |
| 10 11 12 | waste glass other than those mentioned in 10 11 11 |
| 12 WASTES FROM SHAPING AND PHYSICAL AND MECHANICAL SURFACE TREATMENT OF METALS AND PLASTICS | |
| 12 01 | wastes from shaping and physical and mechanical surface treatment of metals and plastics |
| 12 01 01 | ferrous metal filings and turnings |
| 12 01 03 | non-ferrous metal filings and turnings |
| 12 01 05 | plastics shavings and turnings |
| 15 WASTE PACKAGING; ABSORBENTS, WIPING CLOTHS, FILTER MATERIALS AND PROTECTIVE CLOTHING NOT OTHERWISE SPECIFIED | |
| 15 01 | packaging (including separately collected municipal packaging waste) |
| 15 01 01 | paper and cardboard packaging |
| 15 01 02 | plastic packaging |
| 15 01 03 | wooden packaging |
| 15 01 04 | metallic packaging |
| 15 01 05 | composite packaging |
| 15 01 06 | mixed packaging |
| 15 01 07 | glass packaging |
| 15 01 09 | textile packaging |

Table S2.2 Permitted waste types and quantities under Activity AR5 of Table S1.1 – recycling and transfer of non-hazardous waste.

Maximum Quantities

The maximum quantity of all waste accepted at the site (including that under Table S2.1) shall be less than 160000 tonnes per year.

Exclusions

Wastes having any of the following characteristics shall not be accepted:

- Consisting solely or mainly of dusts, powders or loose fibres
- Wastes that are in a form which is either sludge or liquid

| Waste code | Description |
|-------------------|--|
| 17 | CONSTRUCTION AND DEMOLITION WASTES (INCLUDING EXCAVATED SOIL FROM CONTAMINATED SITES) |
| 17 02 | wood, glass and plastic |
| 17 02 01 | wood |
| 17 02 02 | glass |
| 17 02 03 | plastic |
| 17 04 | metals (including their alloys) |
| 17 04 01 | copper, bronze, brass |
| 17 04 02 | aluminium |
| 17 04 03 | lead |
| 17 04 04 | zinc |
| 17 04 05 | iron and steel |
| 17 04 06 | tin |
| 17 04 07 | mixed metals |
| 17 04 11 | cables other than those mentioned in 17 04 10 |
| 19 | WASTES FROM WASTE MANAGEMENT FACILITIES, OFF-SITE WASTE WATER TREATMENT PLANTS AND THE PREPARATION OF WATER INTENDED FOR HUMAN CONSUMPTION AND WATER FOR INDUSTRIAL USE |
| 19 02 | wastes from physico/chemical treatments of waste (including dechromatation, decyanidation, neutralisation) |
| 19 02 03 | premixed wastes composed only of non-hazardous wastes |
| 19 02 10 | combustible wastes other than those mentioned in 19 02 08 and 19 02 09 |
| 19 05 | wastes from aerobic treatment of solid wastes |
| 19 05 01 | non-composted fraction of municipal and similar wastes |
| 19 12 | wastes from the mechanical treatment of waste (for example sorting, crushing, compacting, pelletising) not otherwise specified |
| 19 12 01 | paper and cardboard |
| 19 12 02 | ferrous metal |
| 19 12 03 | non-ferrous metal |
| 19 12 04 | plastic and rubber |
| 19 12 05 | glass |
| 19 12 07 | wood other than that mentioned in 19 12 06 |

| Table S2.2 Permitted waste types and quantities under Activity AR5 of Table S1.1 – recycling and transfer of non-hazardous waste. | |
|---|--|
| Maximum Quantities | |
| The maximum quantity of all waste accepted at the site (including that under Table S2.1) shall be less than 160000 tonnes per year. | |
| Exclusions | |
| Wastes having any of the following characteristics shall not be accepted: | |
| <ul style="list-style-type: none"> • Consisting solely or mainly of dusts, powders or loose fibres • Wastes that are in a form which is either sludge or liquid | |
| Waste code | Description |
| 19 12 08 | textiles |
| 20 | MUNICIPAL WASTES (HOUSEHOLD WASTE AND SIMILAR COMMERCIAL, INDUSTRIAL AND INSTITUTIONAL WASTES) INCLUDING SEPARATELY COLLECTED FRACTIONS |
| 20 01 | separately collected fractions (except 15 01) |
| 20 01 01 | paper and cardboard |
| 20 01 02 | glass |
| 20 01 10 | clothes |
| 20 01 11 | textiles |
| 20 01 38 | wood other than that mentioned in 20 01 37 |
| 20 01 39 | plastics |
| 20 01 40 | metals |
| 20 03 | other municipal wastes |
| 20 03 01 | mixed municipal waste |
| 20 03 02 | waste from markets |
| 20 03 03 | street-cleaning residues |
| 20 03 07 | bulky waste |

| Table S2.3 Permitted waste types and quantities under Activity AR6 of Table S1.1 - storage and transfer of healthcare waste. | |
|---|--|
| Maximum Quantities | |
| The maximum quantity of healthcare waste accepted at the site shall be less than 200 tonnes per year. | |
| Exclusions | |
| Waste having any of the following characteristics shall not be accepted: | |
| <ul style="list-style-type: none"> • Consisting solely or mainly of dusts, powders or loose fibres • Wastes that are in a form which is either sludge or liquid | |
| Waste code | Description |
| 18 | WASTES FROM HUMAN OR ANIMAL HEALTH CARE AND/OR RELATED RESEARCH (except kitchen and restaurant wastes not arising from immediate health care) |
| 18 01 | wastes from natal care, diagnosis, treatment or prevention of disease in humans |
| 18 01 04 | non-infectious offensive waste – human healthcare (for example dressings, plaster casts, linen, disposable clothing, diapers) |

Table S2.3 Permitted waste types and quantities under Activity AR6 of Table S1.1 - storage and transfer of healthcare waste.

Maximum Quantities

The maximum quantity of healthcare waste accepted at the site shall be less than 200 tonnes per year.

Exclusions

Waste having any of the following characteristics shall not be accepted:

- Consisting solely or mainly of dusts, powders or loose fibres
- Wastes that are in a form which is either sludge or liquid

| Waste code | Description |
|-------------------|--|
| 18 02 | wastes from research, diagnosis, treatment or prevention of disease involving animals |
| 18 02 03 | non-infectious anatomical waste, chemically preserved, non-hazardous chemicals |
| 20 01 99 | non-infectious offensive waste – municipal, separately collected fractions not from healthcare or research-related sources |

Schedule 3 – Emissions and monitoring

| Table S3.1 Process monitoring requirements | | | | |
|--|---------------------|-----------------------------|--------------------------------------|--|
| Emission point reference or source or description of point of measurement | Parameter | Monitoring frequency | Monitoring standard or method | Other specifications |
| At the two bag plants serving the MRF and/or RDF production process | Pressure difference | Continuous | None specified | Filters in the bag plants shall be designed to ensure particulate release will not exceed 5mg/m ³ . |

Schedule 4 – Reporting

Parameters, for which reports shall be made, in accordance with conditions of this permit, are listed below.

| Table S4.1 Reporting of monitoring data | | | |
|---|--|-------------------------|----------------------|
| Parameter | Emission or monitoring point/reference | Reporting period | Period begins |
| Process monitoring Parameters as required by condition 3.5. | At the two bag plants serving the MRF and/or RDF production process | Every 6 months | 1 January, 1 July |

| Table S4.2: Annual production/treatment | |
|--|--------------|
| Parameter | Units |
| Refuse derived fuel (RDF) recovered | tonnes |
| Ferrous metals recovered from RDF process | tonnes |
| Other fractions recovered from RDF process | tonnes |

| Table S4.3 Performance parameters | | |
|--|--------------------------------|----------------|
| Parameter | Frequency of assessment | Units |
| Water usage | Annually | m ³ |
| Energy usage | Annually | MWh |
| Total raw material used | Annually | tonnes |

| Table S4.4 Reporting forms | | |
|-----------------------------------|---|-------------------------------------|
| Parameter | Reporting form | Form version number and date |
| Water usage | Water Usage Reporting Form, or other form as agreed in writing by the Environment Agency | Version 1, 08/03/2021 |
| Energy usage | Energy Usage Reporting Form, or other form as agreed in writing by the Environment Agency | Version 1, 08/03/2021 |
| Other performance parameters | Other Performance Parameters Reporting Form, or other form as agreed in writing by the Environment Agency | Version 1, 08/03/2021 |
| Waste returns | E-waste returns | -- |

Schedule 5 – Notification

These pages outline the information that the operator must provide.

Units of measurement used in information supplied under Part A and B requirements shall be appropriate to the circumstances of the emission. Where appropriate, a comparison should be made of actual emissions and authorised emission limits.

If any information is considered commercially confidential, it should be separated from non-confidential information, supplied on a separate sheet and accompanied by an application for commercial confidentiality under the provisions of the EP Regulations.

Part A

| | |
|--------------------------------|--|
| Permit Number | |
| Name of operator | |
| Location of Facility | |
| Time and date of the detection | |

| | |
|---|--|
| (a) Notification requirements for any malfunction, breakdown or failure of equipment or techniques, accident, or emission of a substance not controlled by an emission limit which has caused, is causing or may cause significant pollution | |
| To be notified within 24 hours of detection | |
| Date and time of the event | |
| Reference or description of the location of the event | |
| Description of where any release into the environment took place | |
| Substances(s) potentially released | |
| Best estimate of the quantity or rate of release of substances | |
| Measures taken, or intended to be taken, to stop any emission | |
| Description of the failure or accident. | |

| | |
|---|--|
| (b) Notification requirements for the breach of a limit | |
| To be notified within 24 hours of detection unless otherwise specified below | |
| Emission point reference/ source | |
| Parameter(s) | |
| Limit | |
| Measured value and uncertainty | |
| Date and time of monitoring | |

| | |
|---|--|
| (b) Notification requirements for the breach of a limit | |
| To be notified within 24 hours of detection unless otherwise specified below | |
| Measures taken, or intended to be taken, to stop the emission | |

| | |
|---|----------------------------|
| Time periods for notification following detection of a breach of a limit | |
| Parameter | Notification period |
| | |
| | |
| | |

| | |
|--|--|
| (c) Notification requirements for the breach of permit conditions not related to limits | |
| To be notified within 24 hours of detection | |
| Condition breached | |
| Date, time and duration of breach | |
| Details of the permit breach i.e., what happened including impacts observed. | |
| Measures taken, or intended to be taken, to restore permit compliance. | |

| | |
|--|--|
| (d) Notification requirements for the detection of any significant adverse environmental effect | |
| To be notified within 24 hours of detection | |
| Description of where the effect on the environment was detected | |
| Substances(s) detected | |
| Concentrations of substances detected | |
| Date of monitoring/sampling | |

Part B – to be submitted as soon as practicable

| | |
|--|--|
| Any more accurate information on the matters for notification under Part A. | |
| Measures taken, or intended to be taken, to prevent a recurrence of the incident | |

| | |
|--|--|
| Measures taken, or intended to be taken, to rectify, limit or prevent any pollution of the environment which has been or may be caused by the emission | |
| The dates of any unauthorised emissions from the facility in the preceding 24 months. | |

| | |
|-----------|--|
| Name* | |
| Post | |
| Signature | |
| Date | |

* authorised to sign on behalf of the operator

Schedule 6 – Interpretation

“accident” means an accident that may result in pollution.

“application” means the application for this permit, together with any additional information supplied by the operator as part of the application and any response to a notice served under Schedule 5 to the EP Regulations.

“appropriate measures” are set out in the “Non-hazardous and inert waste: appropriate measures for permitted facilities” guidance published 12 July 2021.

“authorised officer” means any person authorised by the Environment Agency under section 108(1) of The Environment Act 1995 to exercise, in accordance with the terms of any such authorisation, any power specified in section 108(4) of that Act.

“building” is a covered structure enclosed on all vertical sides that provides sheltered cover and contains emissions of, for example, noise, particulate matter, odour and litter.

“container” is a receptacle for waste for example bags, bins, boxes, drums, IBCs and blister packs. Wastes may be packaged in more than one receptacle for example a bag in a box.

“disposal” means any of the operations provided for in Annex I to the Waste Framework Directive.

“emissions of substances not controlled by emission limits” means emissions of substances to air, water or land from the activities, either from the emission points specified in schedule 3 or from other localised or diffuse sources, which are not controlled by an emission or background concentration limit.

“emissions to land” includes emissions to groundwater.

“EP Regulations” means The Environmental Permitting (England and Wales) Regulations SI 2016 No.1154 and words and expressions used in this permit which are also used in the Regulations have the same meanings as in those Regulations.

“groundwater” means all water, which is below the surface of the ground in the saturation zone and in direct contact with the ground or subsoil.

“healthcare waste” means waste produced during human or animal healthcare, or related research activities. It covers both clinical and offensive waste. Wastes produced by healthcare in the community, and similar types of waste produced by non-healthcare activities are included, for example:

- cosmetic body piercing and body art
- non-medicinal procedures in the hair and beauty sector
- substance abuse
- crime scene clean-up

“Industrial Emissions Directive” means DIRECTIVE 2010/75/EU OF THE EUROPEAN PARLIAMENT AND OF THE COUNCIL of 24 November 2010 on industrial emissions, as read in accordance with Schedule 1A to the Environmental Permitting (England and Wales) Regulations 2016.

“impermeable surface” means a surface or pavement constructed and maintained to a standard sufficient to prevent the transmission of liquids beyond the pavement surface

“List of Wastes” means the list of wastes established by Commission Decision 2000/532/EC replacing Decision 94/3/EC establishing a list of wastes pursuant to Article 1(a) of Council Directive 75/442/EEC on waste and Council Decision 94/904/EC establishing a list of hazardous waste pursuant to Article 1(4) of Council Directive 91/689/EEC on hazardous waste.

“Pests” means Birds, Vermin and Insects.

“pollution” includes pollution of the environment, harm to human health and serious detriment to the amenities of the locality, resulting from the permitted activities.

“quarter” means a calendar year quarter commencing on 1 January, 1 April, 1 July or 1 October.

“recovery” means any of the operations provided for in Annex II to the Waste Framework Directive.

“sealed container” for the purposes of this permit, means a container which is fully enclosed, weather proof, does not allow any solid or liquid content to escape and is lockable.

“sealed drainage” in relation to an impermeable surface means a drainage system with impermeable components which does not leak and which will ensure that:

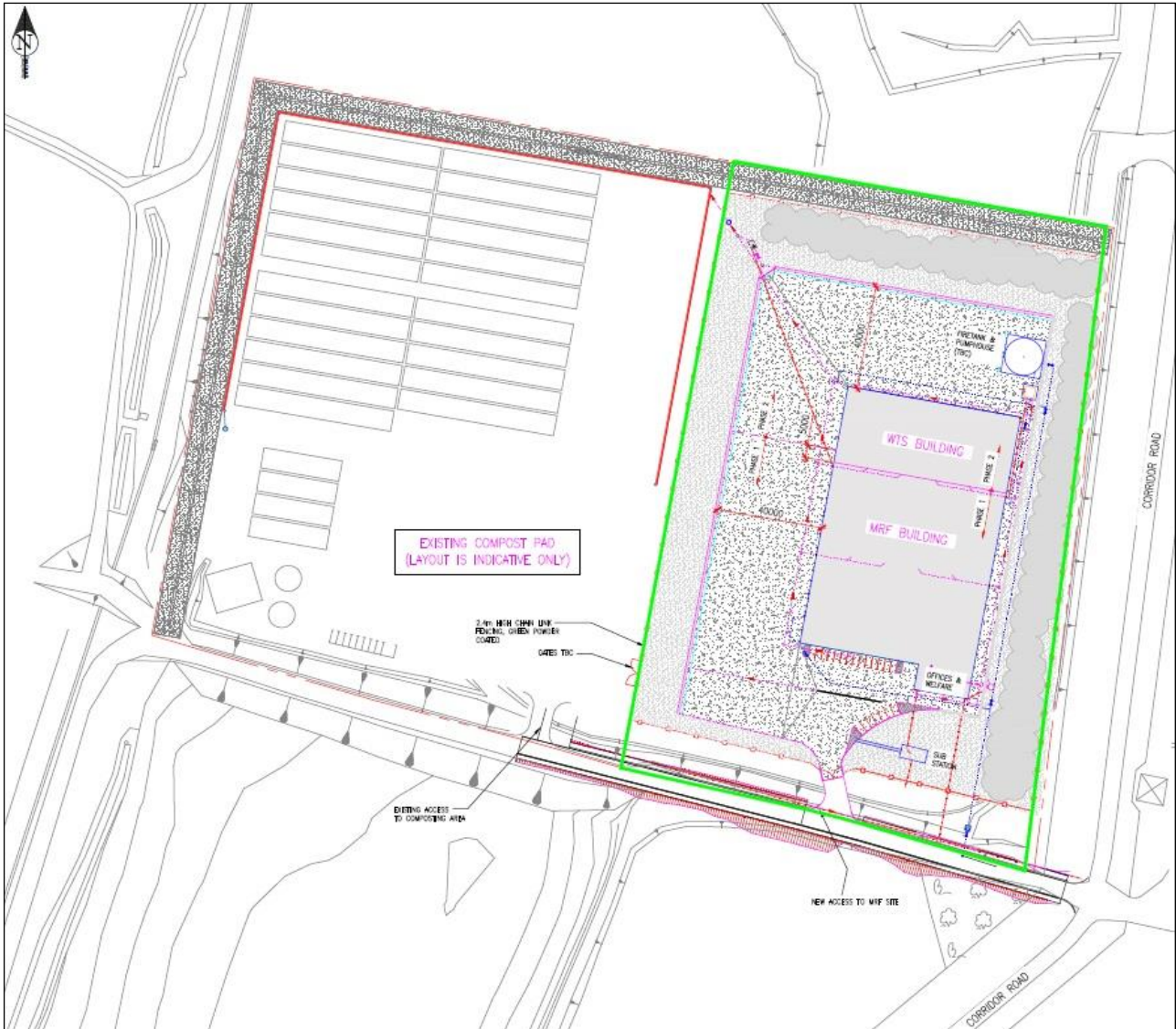
- no liquid will run off the surface otherwise than via the system
- all liquids entering the system are collected in a sealed sump, except where they may lawfully be discharged to foul sewer.

“Waste code” means the six digit code referable to a type of waste in accordance with the List of Wastes and in relation to hazardous waste, includes the asterisk.

“Waste Framework Directive” or “WFD” means Waste Framework Directive 2008/98/EC of the European Parliament and of the Council on waste, as read in accordance with Schedule 1A to the Environmental Permitting (England and Wales) Regulations 2016.

“year” means calendar year ending 31 December.

Schedule 7 – Site plan



END OF PERMIT