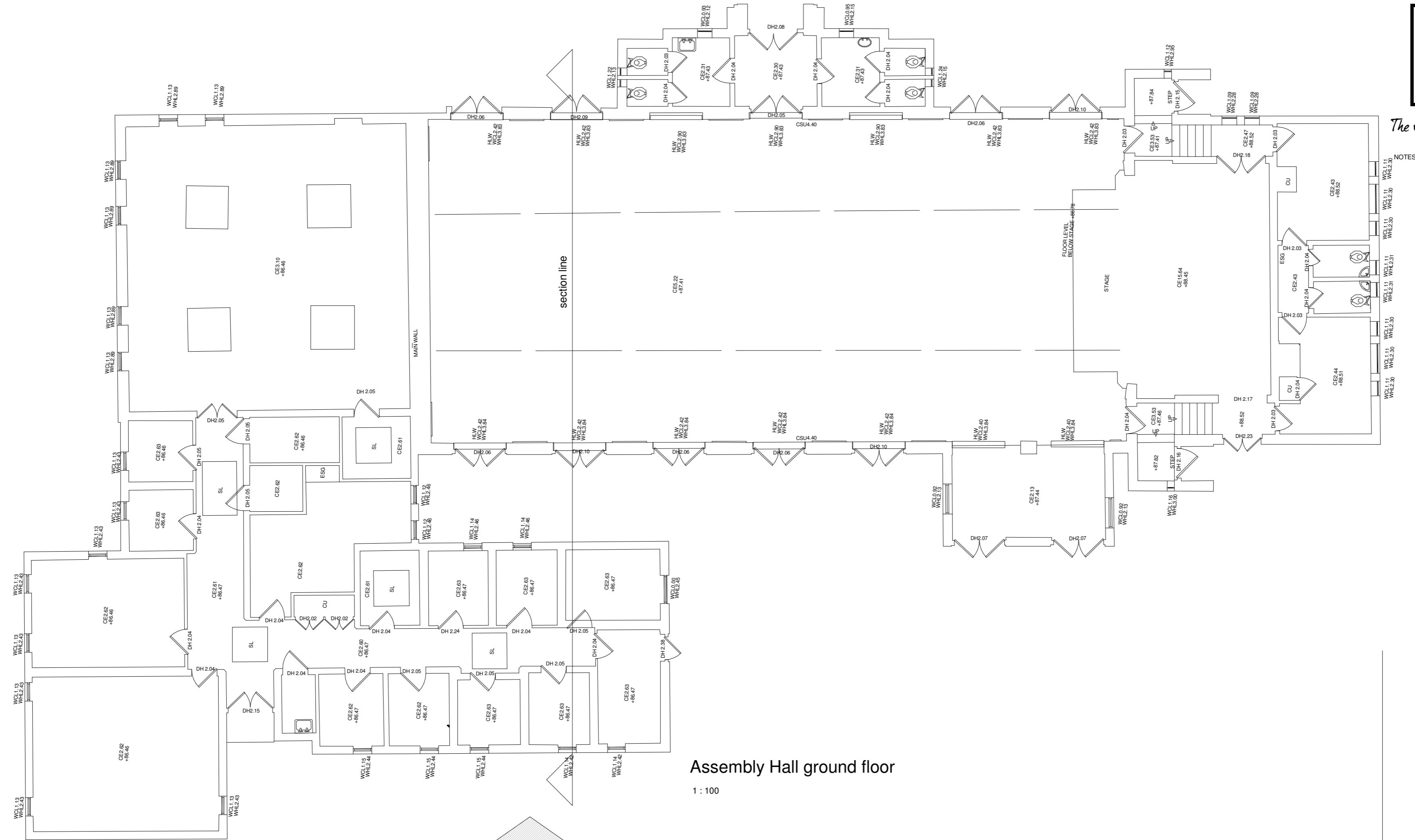
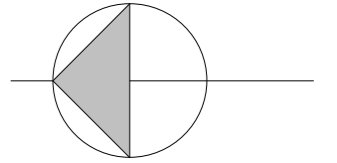


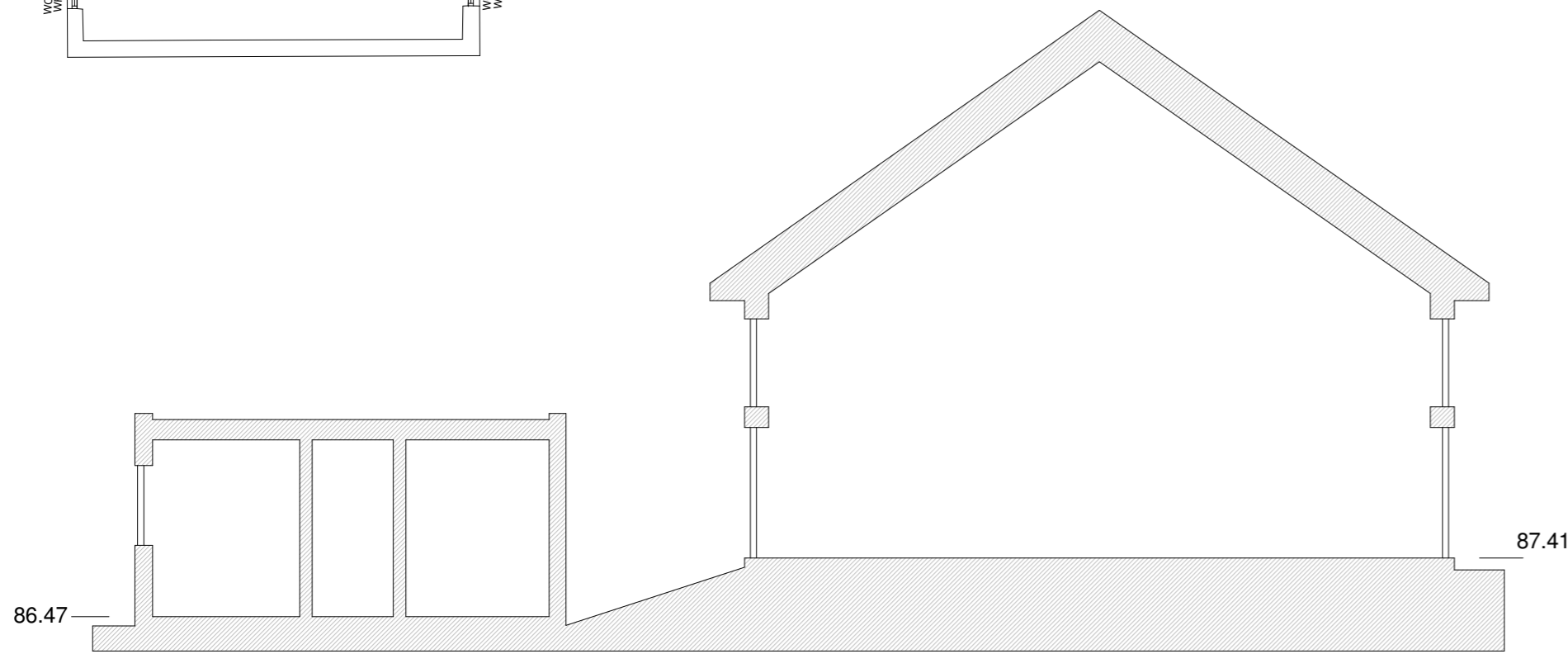
6. ASSEMBLY HALL PLANS-EXISTING AND PROPOSED

Existing assembly hall plans and section	21 0037-234
Proposed assembly hall conversion floor plans	21 0037-235
Proposed assembly hall conversion elevations	21 0037-236
Existing assembly hall elevations	21 0037-238



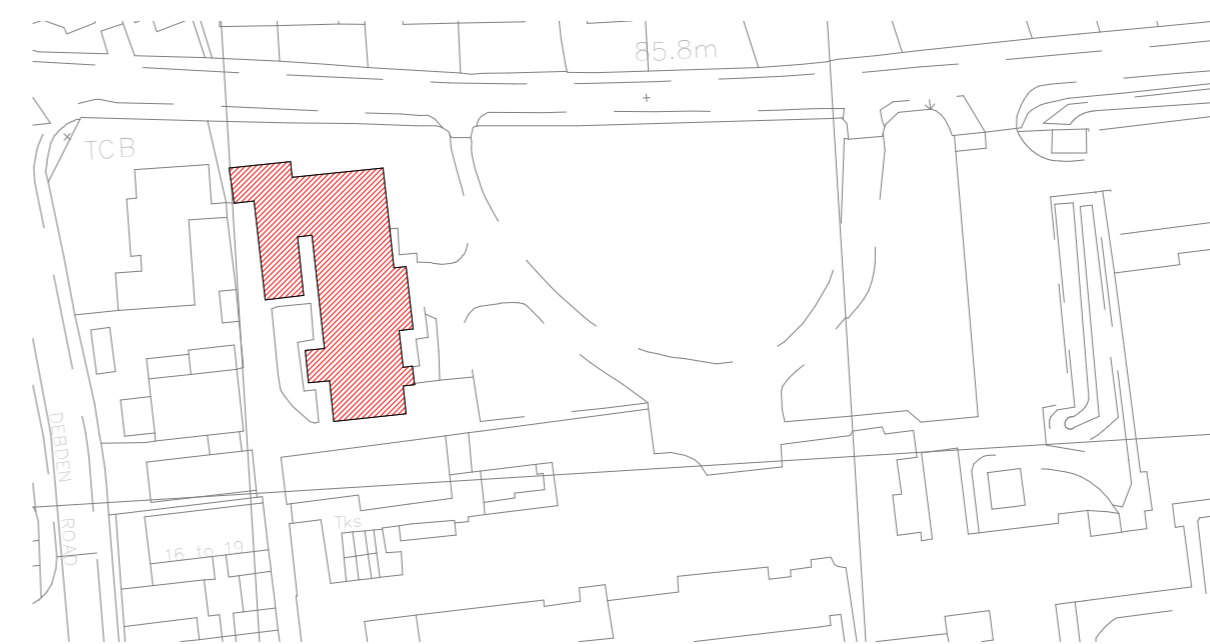
Assembly Hall ground floor

1 : 100



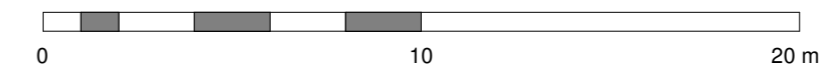
Assembly Hall existing section

1 : 100



Assembly hall location plan

1 : 1250



NOTES

REV	AMENDMENTS	DATE
DRAWN BY Author		DATE 11/06/20
SCALE (@ A2) As indicated		PROJECT NUMBER
CHECKED BY Checker		APPROVED
TITLE Existing assembly hall plans and section		
PROJECT Walden School, Saffron Walden		
DRAWING NUMBER 21 0037-234		

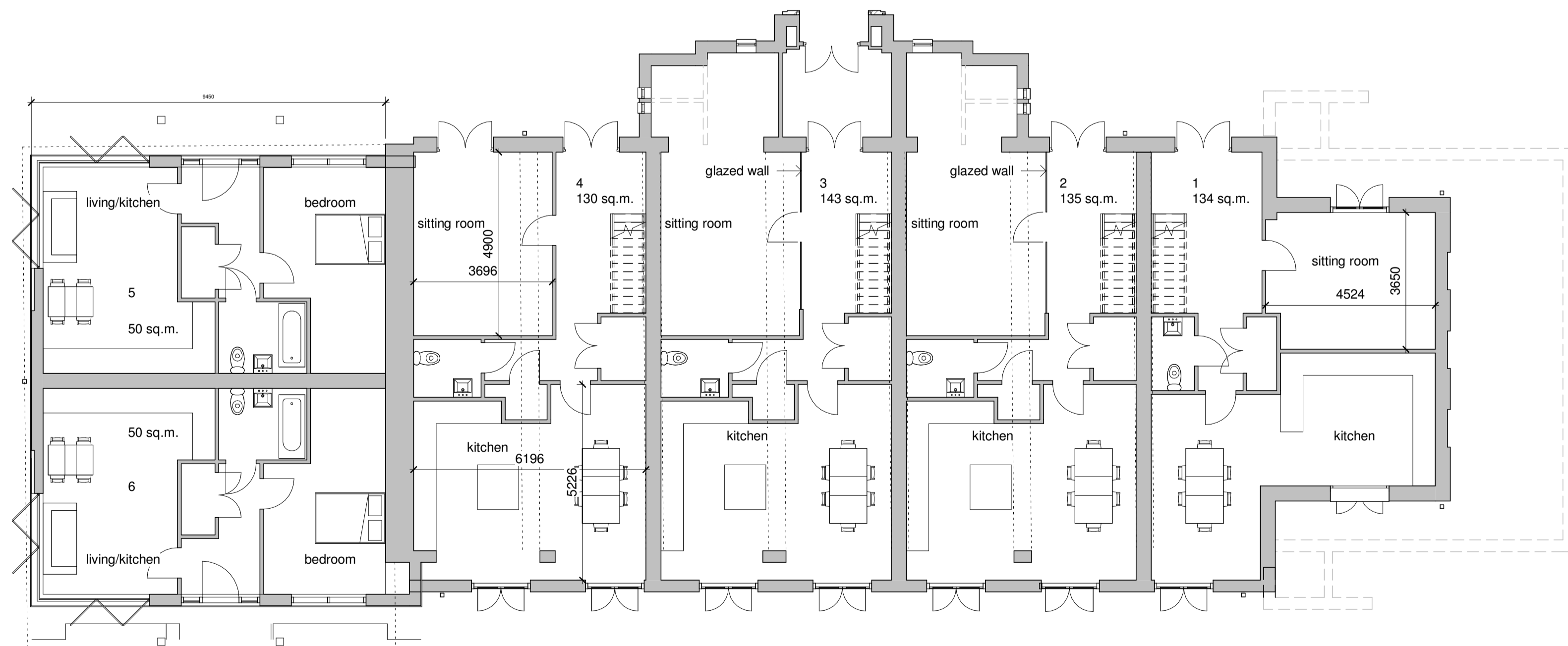
NOTES

- windows to have equal casements
- walls-red facing bricks
staffordshire blue brick detailing
- roof -main hall as existing
new extension raised seam metal covering
- windows-dark aluminium, equal casements
- doors-dark aluminium
- rainwater goods-dark to match windows
- boiler flues-black



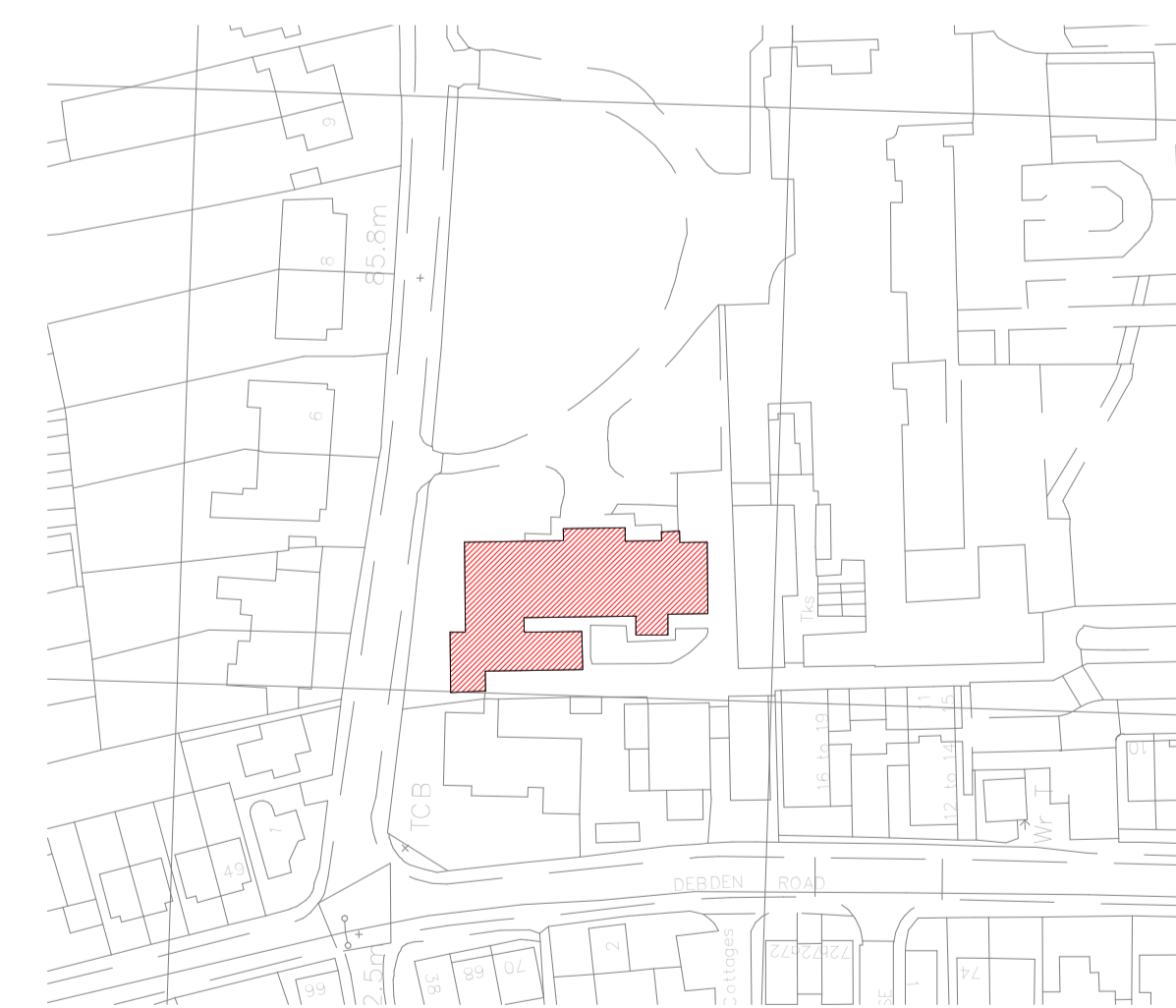
Assembly Hall first floor proposed

1 : 100



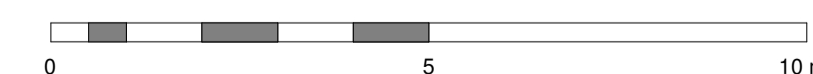
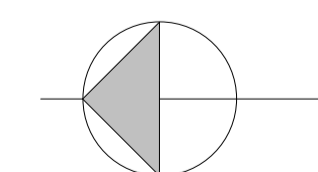
Assembly Hall ground floor proposed

1 : 100



Assembly hall location

1 : 1250



B	general revisions post design meeting	28/10/2021
A	General revisions	28/10/2021
REV	AMENDMENTS	DATE
DRAWN BY		DATE
Author		09/27/21
SCALE (@ A1)		PROJECT NUMBER
As indicated		Project Number
CHECKED BY		APPROVED
Checker		
TITLE		
Proposed assembly hall conversion floor plans		
PROJECT		
Walden School, Saffron Walden		
DRAWING NUMBER		
21 0037-235 B		



Chase New Homes
Jasmine House
8 Parkway
Welwyn Garden City
AL8 6HG

Tel: 01707 660 660

The Excitement is Building

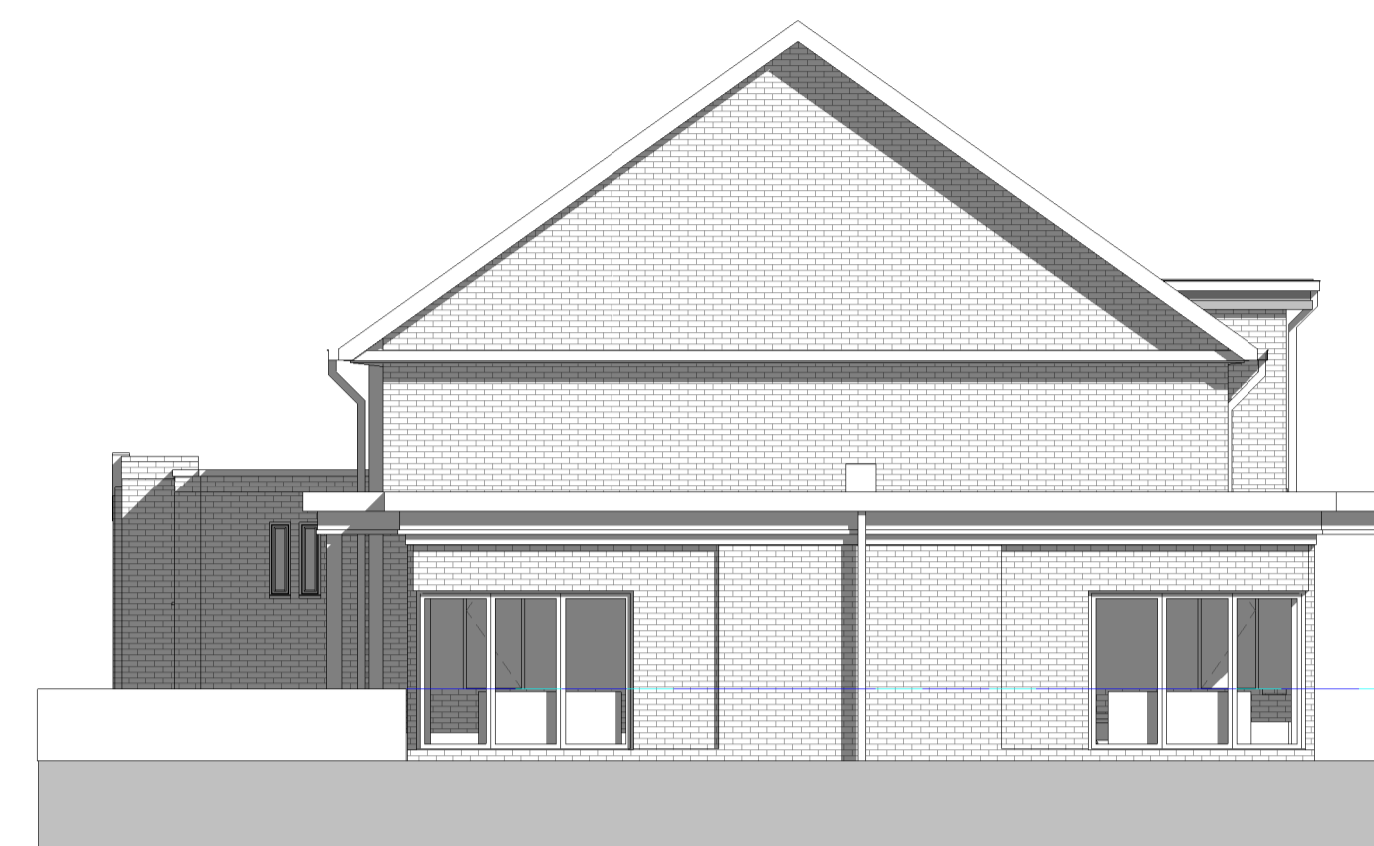
NOTES

- windows to have equal casements
- walls-red facing bricks
- staffordshire blue brick detailing
- roof -main hall as existing
- new extension raised seam metal covering
- windows-dark aluminium, equal casements
- doors-dark aluminium
- rainwater goods-dark to match windows
- boiler flues-black



Front (east) elevation

1 : 100



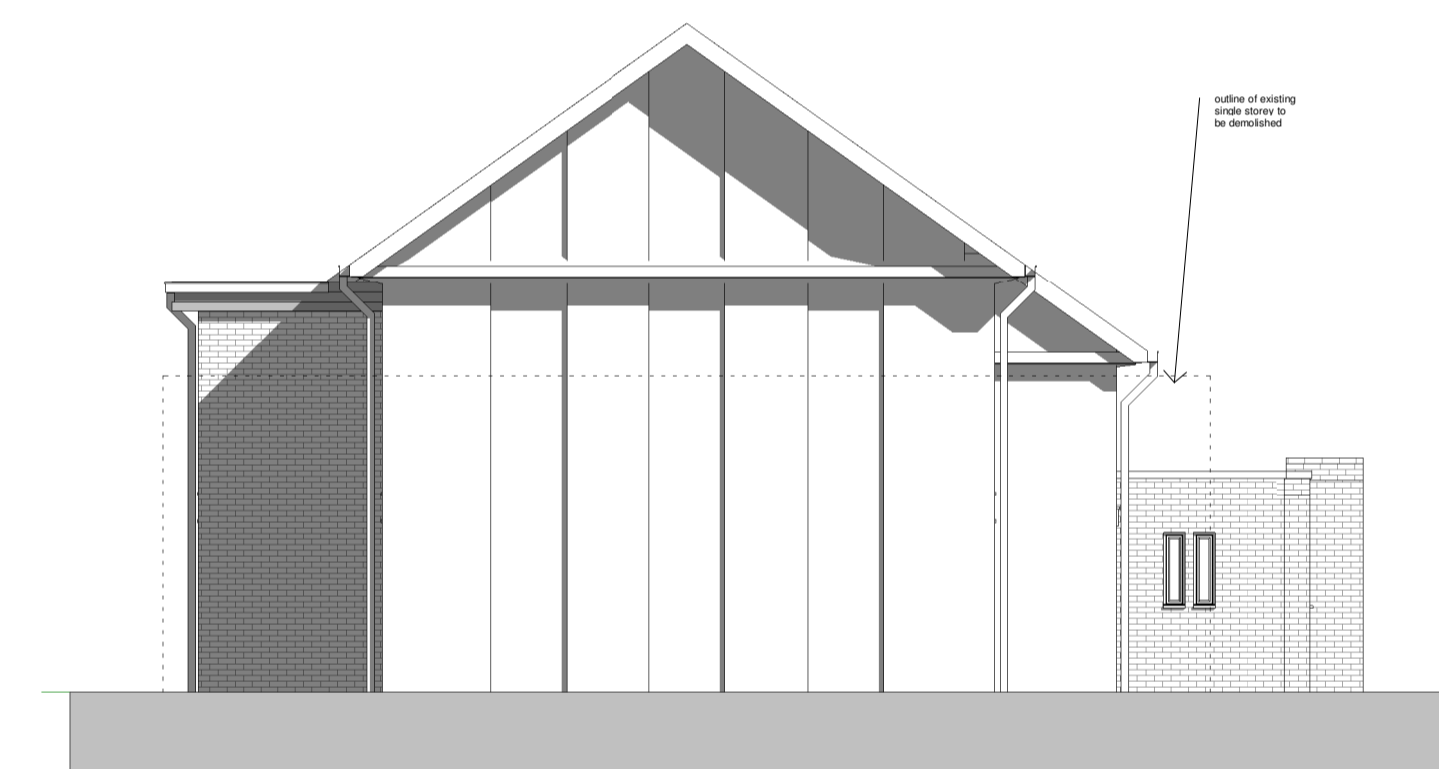
Side (north) elevation

1 : 100



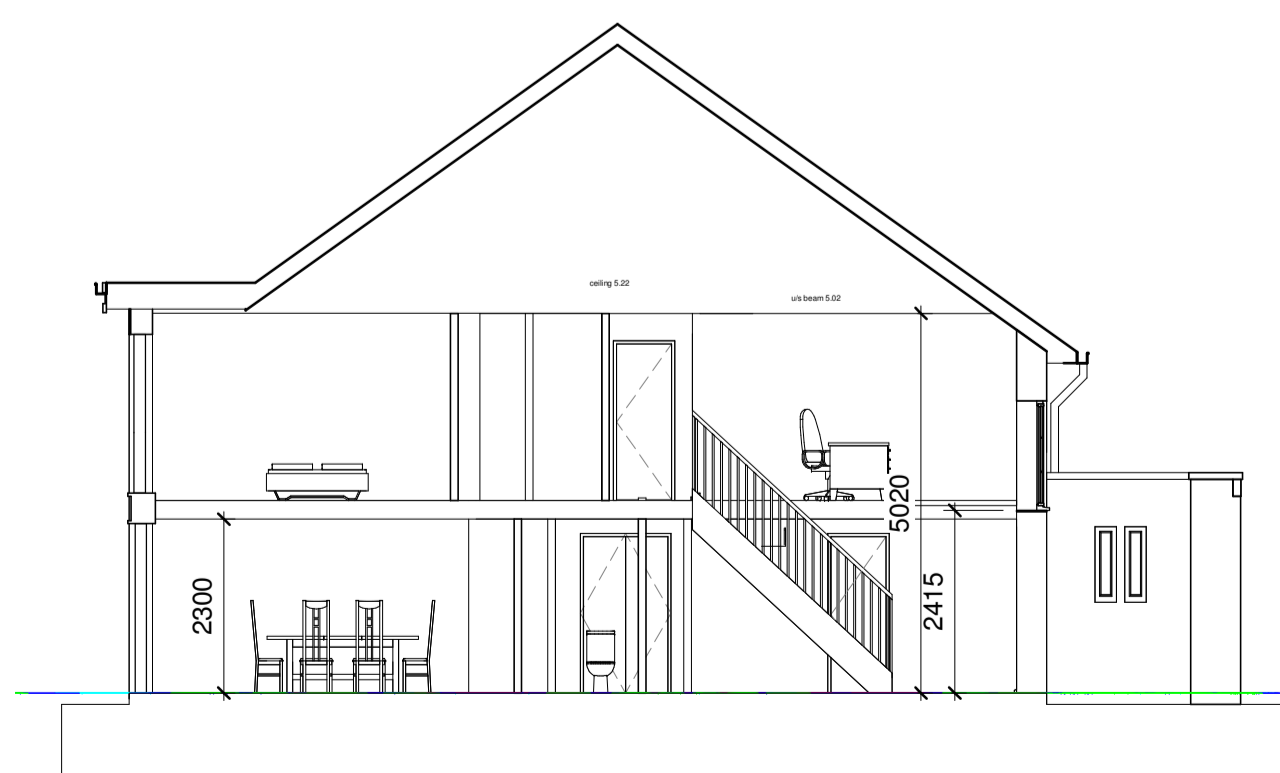
Rear (west) elevation

1 : 100



Side (south) elevation

1 : 100



Typical section

1 : 100



REV	AMENDMENTS	DATE
DRAWN BY		DATE
Author		11/04/21
SCALE (@ A1)		PROJECT NUMBER
1 : 100		Project Number
CHECKED BY		APPROVED
Checker		
TITLE		
Proposed assembly hall conversion elevations		
PROJECT		
Walden School, Saffron Walden		
DRAWING NUMBER		
21 0037-236		

11/03/2022 10:00:26



Chase New Homes
 Jasmine House
 8 Parkway
 Welwyn Garden City
 AL8 6HG

Tel: 01707 660 660

The Excitement is Building

NOTES



East elevation

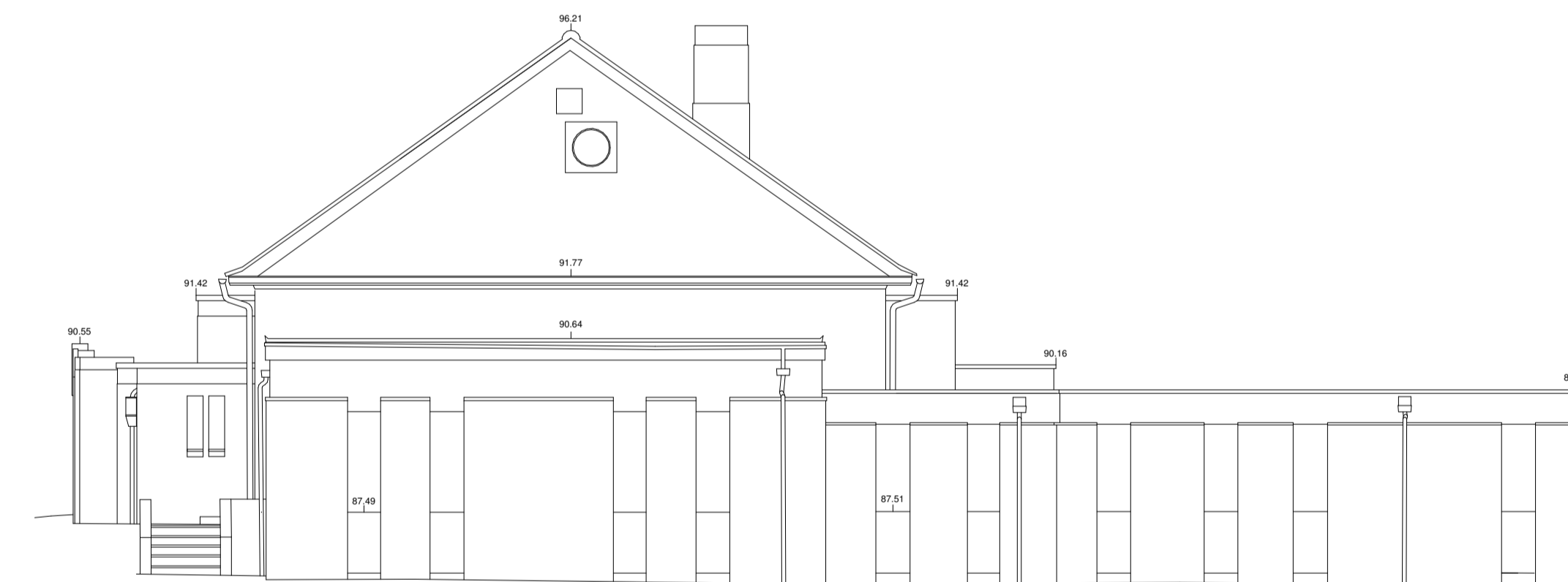


North elevation

DATUM 84.00m



West elevation



South elevation

DATUM 84.00m

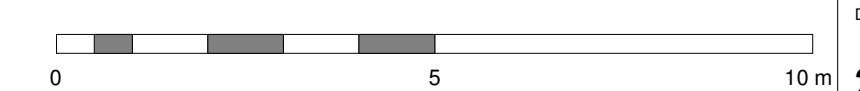
REV	AMENDMENTS	DATE

DRAWN BY	DATE
Author	03/02/22
SCALE (@ A1)	PROJECT NUMBER
1:100	Project Number
CHECKED BY	APPROVED
Checker	

TITLE
 Existing assembly hall elevations

PROJECT
 Walden School, Saffron Walden

DRAWING NUMBER
21 0037-238



04/03/2022 11:03:05