

## EUROPEAN HEALTH INSURANCE CARD (EHIC)

When you travel from Portugal to visit another EU country, Iceland, Liechtenstein, Norway or Switzerland, you can use an EHIC to access state-provided healthcare in that country.

During a short stay, your EHIC covers treatment that is medically necessary until your planned return home.

The EHIC is not a replacement for comprehensive travel insurance. If you are travelling, follow the travel advice on GOV.UK and the advice from the country's authorities.

You should apply for a Portuguese-issued European Health Insurance Card (EHIC) for visits outside Portugal if you are:

- registered with Portuguese Social Security and have a NISS (nº de Segurança Social), or
- resident in Portugal, with a healthcare user's number (nº de Utente de Saúde) and do not have healthcare cover from the UK or another Member State (for example if you are not entitled to an S1)



Your Portuguese EHIC is valid in the EU, UK, Iceland, Liechtenstein, Norway and Switzerland.

If you are a UK S1 holder, you are entitled to a new UK-issued EHIC or a Global Health Insurance Card (GHIC). The card you are entitled to will depend on when you moved to Portugal. You can use your EHIC or GHIC when travelling in the EU and Switzerland. If you moved to Portugal before 1 January 2021 and apply for a new EHIC, you can also use it in Iceland, Liechtenstein and Norway. Do not use your EHIC or GHIC to access healthcare in Portugal if you are a resident here.



## USING NHS SERVICES WHEN VISITING THE UK

If you are a UK S1 holder who became resident in Portugal before 1 January 2021, you are entitled to use NHS services for free when visiting the UK.

S1 holders who became resident in Portugal from 1 January 2021 onwards can no longer use the NHS free of charge when visiting the UK, and should travel with insurance which will cover any necessary medical treatment.

If you are entitled to a Portuguese issued EHIC you can use this for necessary care when visiting the UK.



British Embassy  
Lisbon

## HEALTHCARE FOR BRITISH NATIONALS LIVING IN PORTUGAL

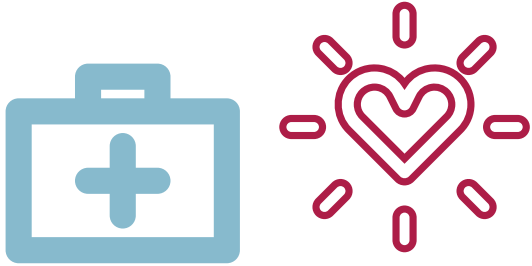
**If you are a British national resident in Portugal, or you are planning to move here, this information will explain how to access healthcare.**



## HEALTHCARE IN PORTUGAL

Portugal has a residence-based healthcare system.

This means that if you are legally resident in Portugal, you are entitled to state healthcare on the same basis as a Portuguese citizen.



## REGISTER FOR HEALTHCARE

If you are resident in Portugal (i.e. have a residence permit), you have the right to register for state-healthcare.

1. Go to your local healthcare centre (Centro de Saúde) to register.
2. Take your valid passport and residence permit.
3. You will be issued with a Health No (nº de Utente de Saúde). This will be your ID number to access any state-healthcare services in Portugal.
4. You don't need a Social Security number to register for healthcare.
5. Do not register for or try to access healthcare using your European Health Insurance Card (EHIC).

## S1

If you receive a UK state pension, or an exportable benefit from the UK, or are a posted worker, the UK is responsible for your healthcare.

You have the same access as any other resident in Portugal, but you should register for healthcare using the S1 form.

1. Call the Overseas Healthcare Services (0044 191 218 1999) to apply for an S1 form
2. Register your S1 form at a Portuguese Social Security District Centre. Make sure you keep a copy of the S1 to show the health centre when you register.

More information available at:

**GOV.UK** Living in Portugal  
**GOV.UK** Healthcare in Portugal  
Get Healthcare on **acss.min-saude.pt**

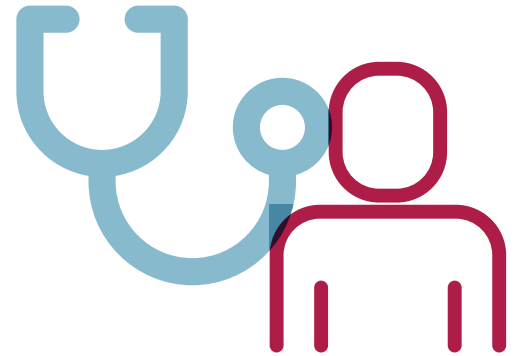
## DO YOU HAVE FURTHER QUESTIONS ABOUT ACCESSING HEALTHCARE IN PORTUGAL?

Contact the British Embassy's dedicated healthcare team on:

**eea.healthcare@fcdo.gov.uk**

**IN A MEDICAL EMERGENCY CALL:**

# 112



f @BritsinPortugal • f @SNS.gov.ptl  
t @UKinPortugal • t @SNS\_pt