



# Department for Levelling Up, Housing & Communities

## Planning applications in England:

Factsheet

October to December 2021

### Residential and commercial applications granted (major and minor):

**Residential**  
**9,500** - 7% from 2020 Q4

**Commercial**  
**2,000** + 6% from 2020 Q4

### Householder developments:

**Decided**  
**60,200** + 8% from 2020 Q4

As a proportion of all applications decided  
**58%** + 1 pp from 2020 Q4

### Permitted development rights (PDRs):

Number of applications:

**Prior approval not required**  
**3,900** - 15% from 2020 Q4

**Granted**  
**1,700** - 4% from 2020 Q4

**Refused**  
**1,700** - 9% from 2020 Q4

### County matter applications

**Decided**  
**167** - 25% from 2020 Q4

**Granted**  
**150** - 28% from 2020 Q4

pp Percentage point

### Number of applications:

Received

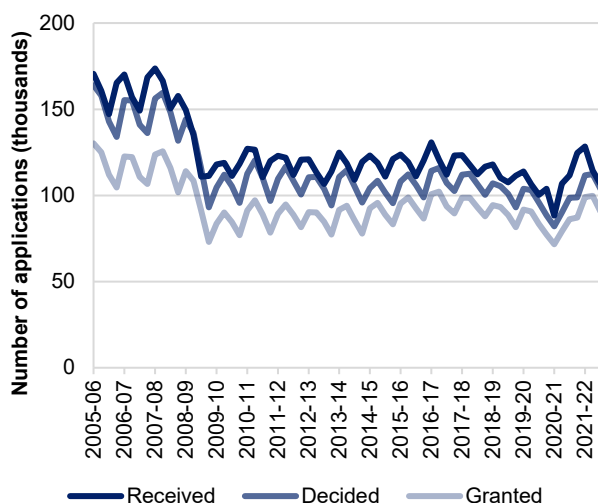
**106,600** - 5% from 2020 Q4

Decided

**103,800** + 5% from 2020 Q4

Granted

**90,700** + 5% from 2020 Q4



### Percentage of applications:

Granted

**87%** unchanged from 2020 Q4

### The percentage of applications decided in time by development type:

Major applications

**86%** - 2 pp from 2020 Q4

Minor applications

**80%** - 4 pp from 2020 Q4

Other applications

**84%** - 6 pp from 2020 Q4