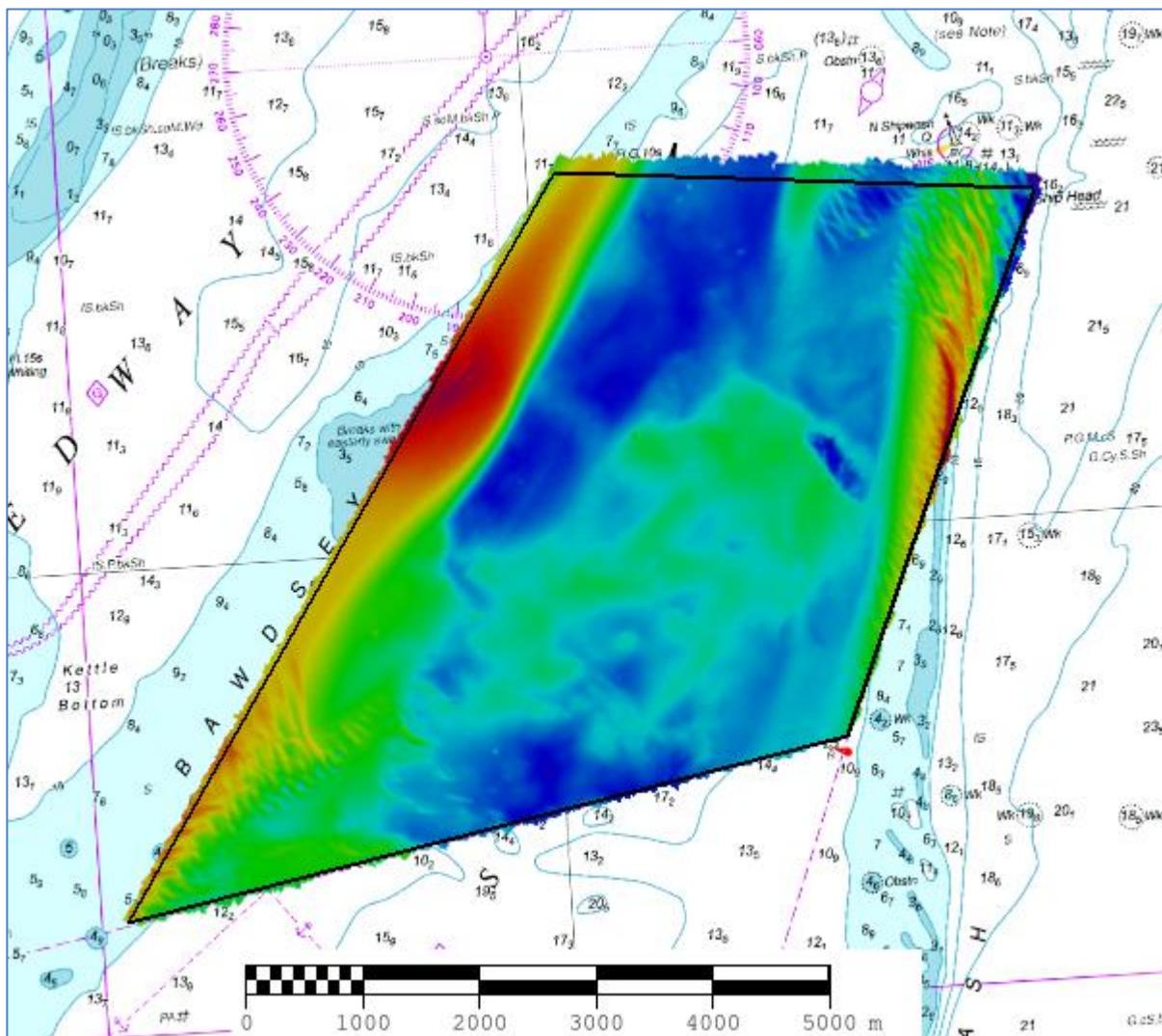




## THAMES ESTUARY SOUTH SHIPWASH (TE2B) 2020 ASSESSMENT

An assessment of the 2020 hydrographic survey of the area TE2B South Shipwash: to monitor recent seabed movement; to identify any implications for shipping; and to make recommendations for future surveys.



## CONTENTS

Notes	2
1. SUMMARY	1
2. LOCATION	1
3. REFERENCE SURVEY DETAIL	2
4. NEW SURVEY DETAIL	2
5. DESCRIPTION OF RECENT BATHYMETRIC CHANGE	2
6. RECOMMENDATIONS FOR FUTURE SURVEYS	5

### Notes

This Assessment is produced by the UK Hydrographic Office (UKHO) for the Maritime and Coastguard Agency (MCA). Analysis of the Routine Resurvey Areas forms part of the Civil Hydrography Programme and the reports are made available to through the UKHO website and are presented to the Civil Hydrography Working Group. When approved, the recommendations are incorporated into the Routine Resurvey Programme. The report is governed by a Memorandum of Understanding between the DfT (including the MCA) and the MOD (including the UKHO).

The Admiralty Chart extracts, other graphics and tables in this Report are included for illustrative purposes only and are NOT TO BE USED FOR NAVIGATION.

This material is protected by Crown Copyright. It may be downloaded from the UK Hydrographic Office's (UKHO) web site and printed in full for personal or non-commercial internal business use. Extracts may also be reproduced for personal or non-commercial internal business use on the condition that the UK Hydrographic Office is acknowledged as the publisher and the Crown is acknowledged as the copyright owner.

Applications for permission to reproduce the material for any other purpose (including any distribution of the material or extracts to third parties) can be made interactively on the UKHO's web site ([www.ukho.gov.uk](http://www.ukho.gov.uk)), by e-mail to [intellectualproperty@ukho.gov.uk](mailto:intellectualproperty@ukho.gov.uk) or in writing to Intellectual Property, UK Hydrographic Office, Admiralty Way, Taunton, Somerset, TA1 2DN.

No analysis of shipping traffic has been included within this report due to no AIS data being supplied by MCA.

All depths are to Chart Datum, defined using the UKHO VORF Model





In Figure 4 the 2020 survey is compared to a 60m interpolated grid of a 1993 Single beam survey and shows the movement of Bawdsey Bank westwards. Also indicated is movement of sand waves in the SW corner of the survey area in a SW direction.

5.2 The depth plot in Figure 5 shows that the controlling depth in the 2020 survey is 11.1m, located at 52-00.455 N 001-35.696 E.

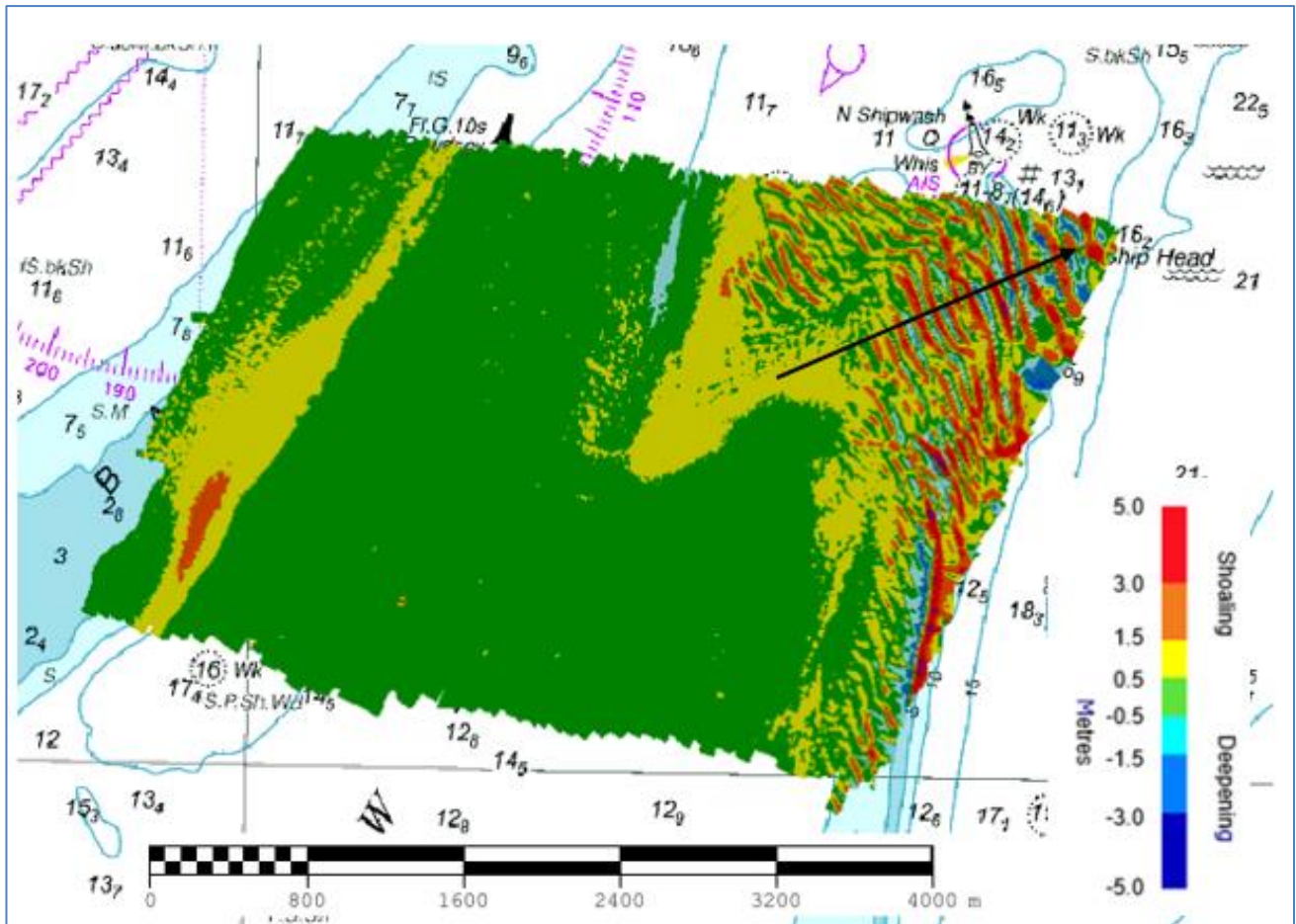


Figure 3: Difference surface showing bathymetric changes between the 2016 survey and northern part of the 2020 survey overlaid on BA Chart 2052 (Black arrows represent sandwave migration since 2016 survey)

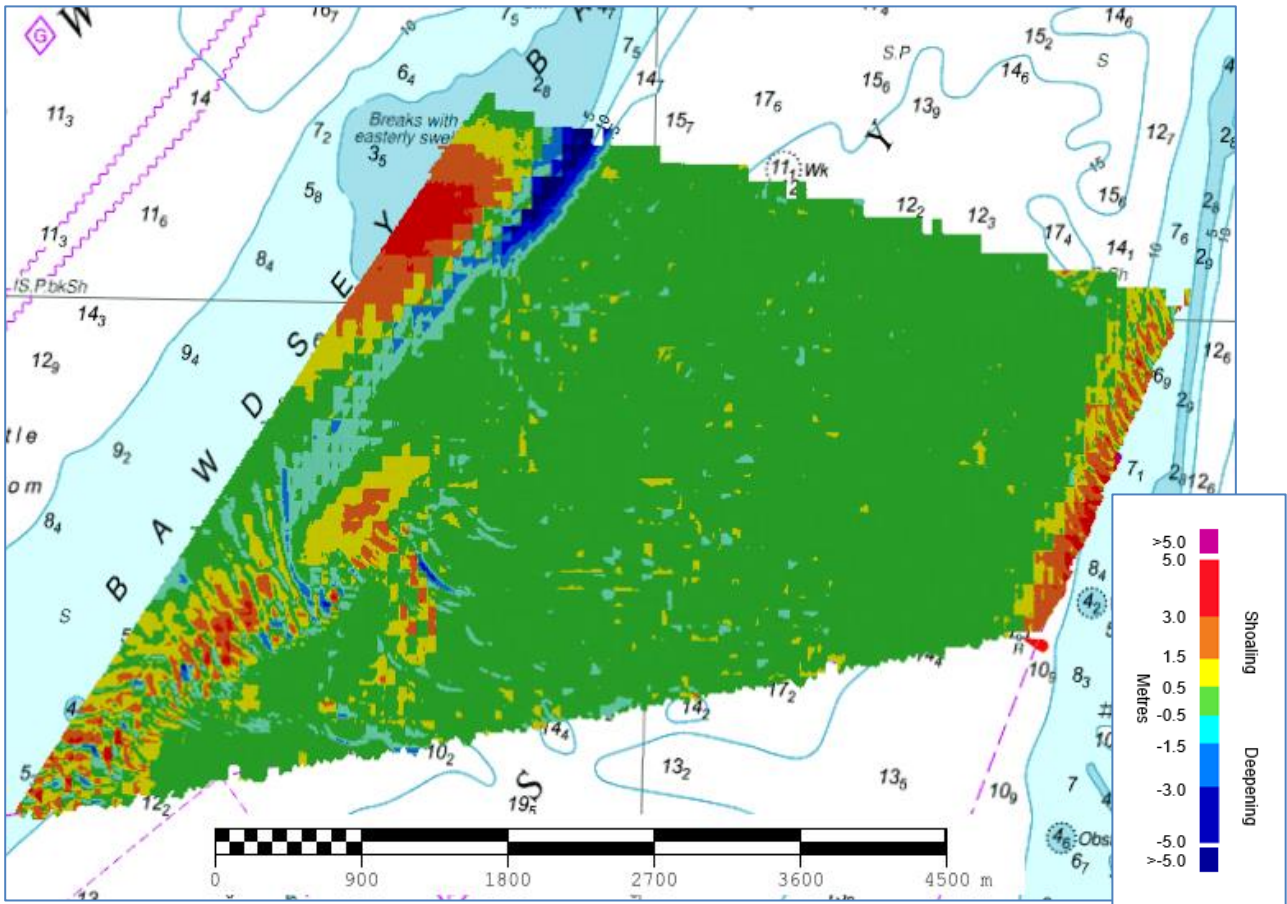


Figure 4: Difference surface showing bathymetric changes between the 1993 single beam survey (interpolated surface 60m grid) and northern part of the 2020 survey overlaid on BA Chart 2052.

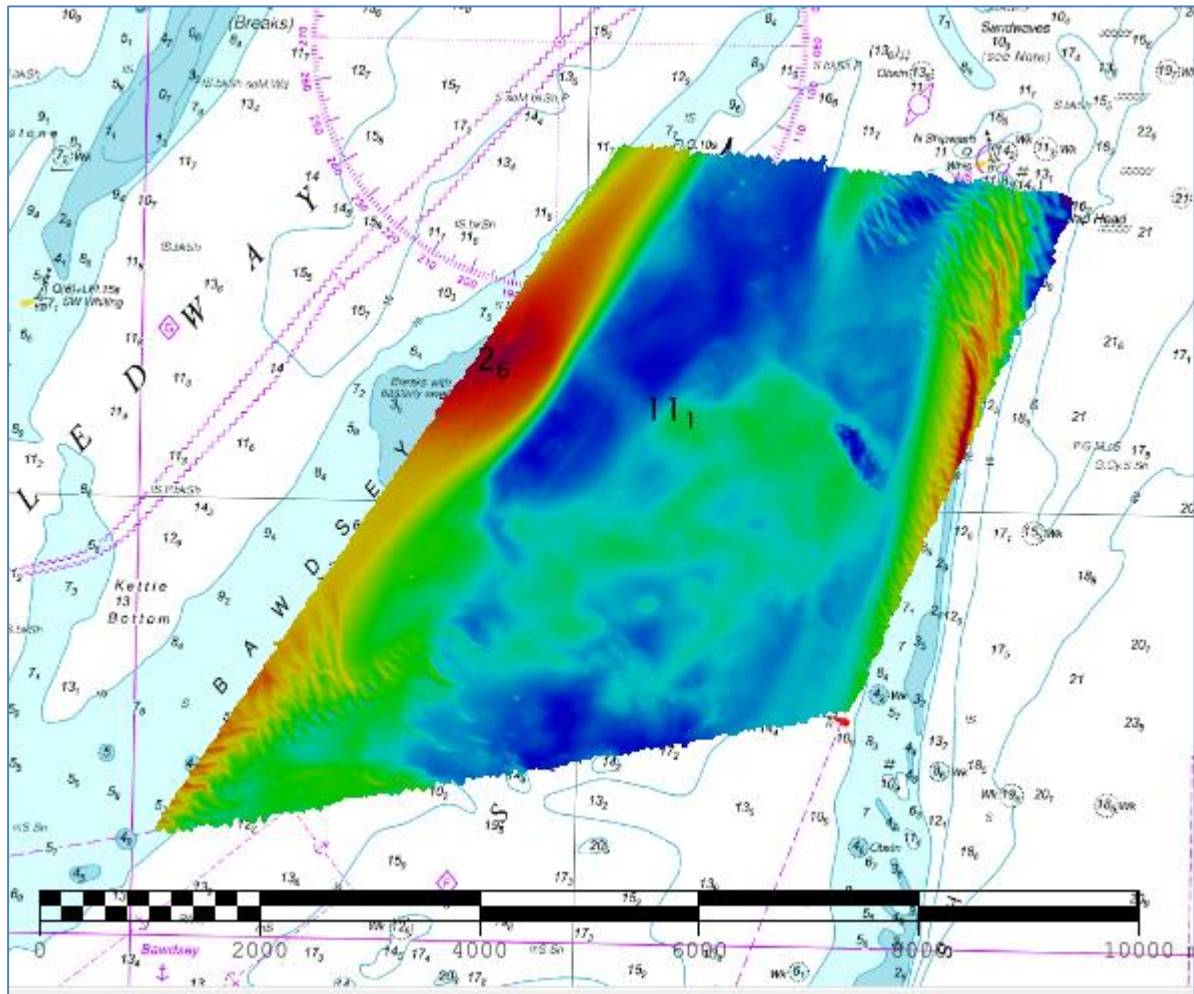


Figure 5: Colour banded surface with the least depth of the 2020 survey 2.6m and the controlling depth of the 2020 survey 11.1m. The controlling depth is located on a wreck near the centre of the channel and has not changed since last surveyed in 2016.

## 6. RECOMMENDATIONS FOR FUTURE SURVEYS

### Survey Interval

- 6.1 Given the location of the area in relation to the DWR and the draught of vessels navigating the area, TE2b should become established routine resurvey area, re surveyed every 12 years.

### Survey Area

- 6.2 Based on the 2020 survey the survey area should remain the same. The edge of Bawdsey Bank has been captured and shoal area to the E of Shipway Channel has also been captured.