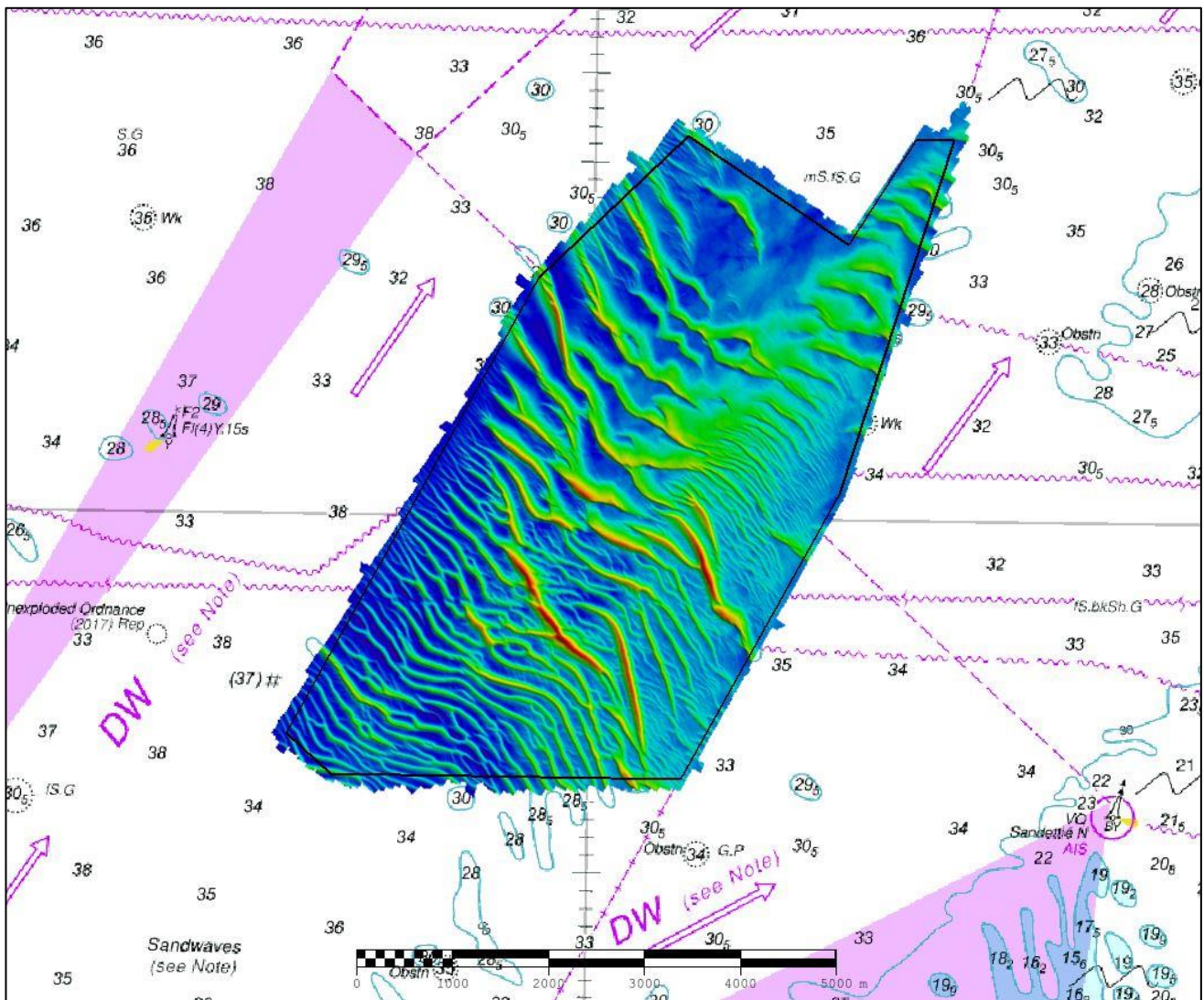




UK Hydrographic
Office

DOVER STRAIT NW SANDETTIE (DWR B2) 2019 ASSESSMENT

An assessment of the 2019 hydrographic survey of the area DWR B2 NW Sandettie: to monitor recent seabed movement; to identify any implications for shipping; and to make recommendations for future surveys.



CONTENTS

Notes	2
1. SUMMARY	1
2. LOCATION	1
3. REFERENCE SURVEY DETAIL	2
4. NEW SURVEY DETAIL	2
5. DESCRIPTION OF RECENT BATHYMETRIC CHANGE	3
6. RECOMMENDATIONS FOR FUTURE SURVEYS	4

Notes

This Assessment is produced by the UK Hydrographic Office (UKHO) for the Maritime and Coastguard Agency (MCA). Analysis of the Routine Resurvey Areas forms part of the Civil Hydrography Programme and the reports are made available to through the UKHO website and are presented to the Civil Hydrography Working Group. When approved, the recommendations are incorporated into the Routine Resurvey Programme. The report is governed by a Memorandum of Understanding between the DfT (including the MCA) and the MOD (including the UKHO).

The Admiralty Chart extracts, other graphics and tables in this Report are included for illustrative purposes only and are NOT TO BE USED FOR NAVIGATION.

This material is protected by Crown Copyright. It may be downloaded from the UK Hydrographic Office's (UKHO) web site and printed in full for personal or non-commercial internal business use. Extracts may also be reproduced for personal or non-commercial internal business use on the condition that the UK Hydrographic Office is acknowledged as the publisher and the Crown is acknowledged as the copyright owner.

Applications for permission to reproduce the material for any other purpose (including any distribution of the material or extracts to third parties) can be made interactively on the UKHO's web site (www.ukho.gov.uk), by e-mail to intellectualproperty@ukho.gov.uk or in writing to Intellectual Property, UK Hydrographic Office, Admiralty Way, Taunton, Somerset, TA1 2DN.

No analysis of shipping traffic has been included within this report due to no AIS data being supplied by MCA.

All depths are to Chart Datum, defined using the UKHO VORF Model

NW SANDETTIE (DWR B2) - 2019

1. SUMMARY

Changes Detected

- 1.1 The area is very mobile with sandwaves migrating in both north-easterly and south-westerly directions.
- 1.2 The controlling depth has changed from 21.9m in 2013 to 22.2m in 2019.

Reasons for Continuing to Resurvey the Area

- 1.3 As the channel is in a deep-water route and the seabed is mobile in the area, continued monitoring through re-surveys is recommended.

Recommendations

- 1.4 The DWR B2 should remain on the 12-year survey interval.
- 1.5 The survey limits for DWR B2 are suitable at present.

2. LOCATION

- 2.1 Survey interval at time of resurvey: 12 years
- 2.2 Area Covered: 28.05 km²

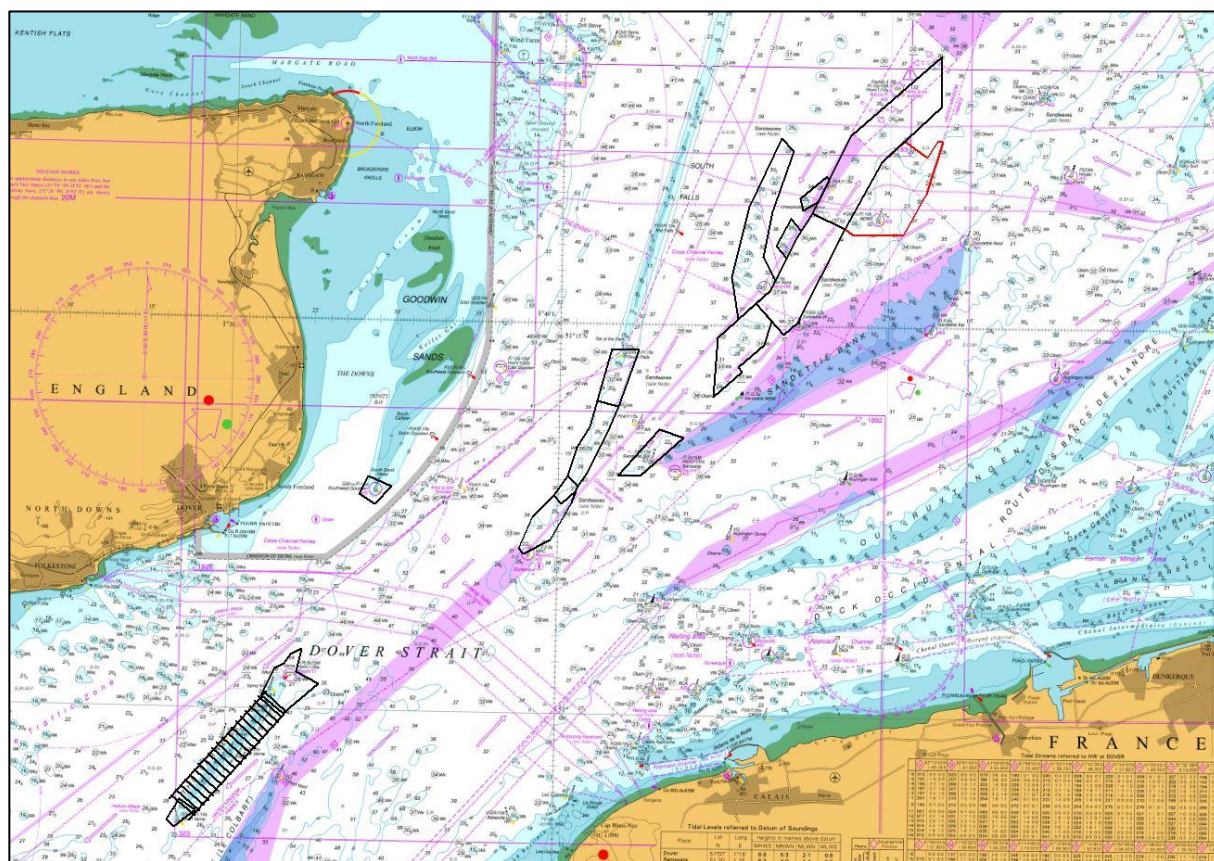


Figure 1: Areas covered under the 2019 Dover Strait Routine Resurvey overlaid on BA Chart 1610-0 with DWR B2 in Red

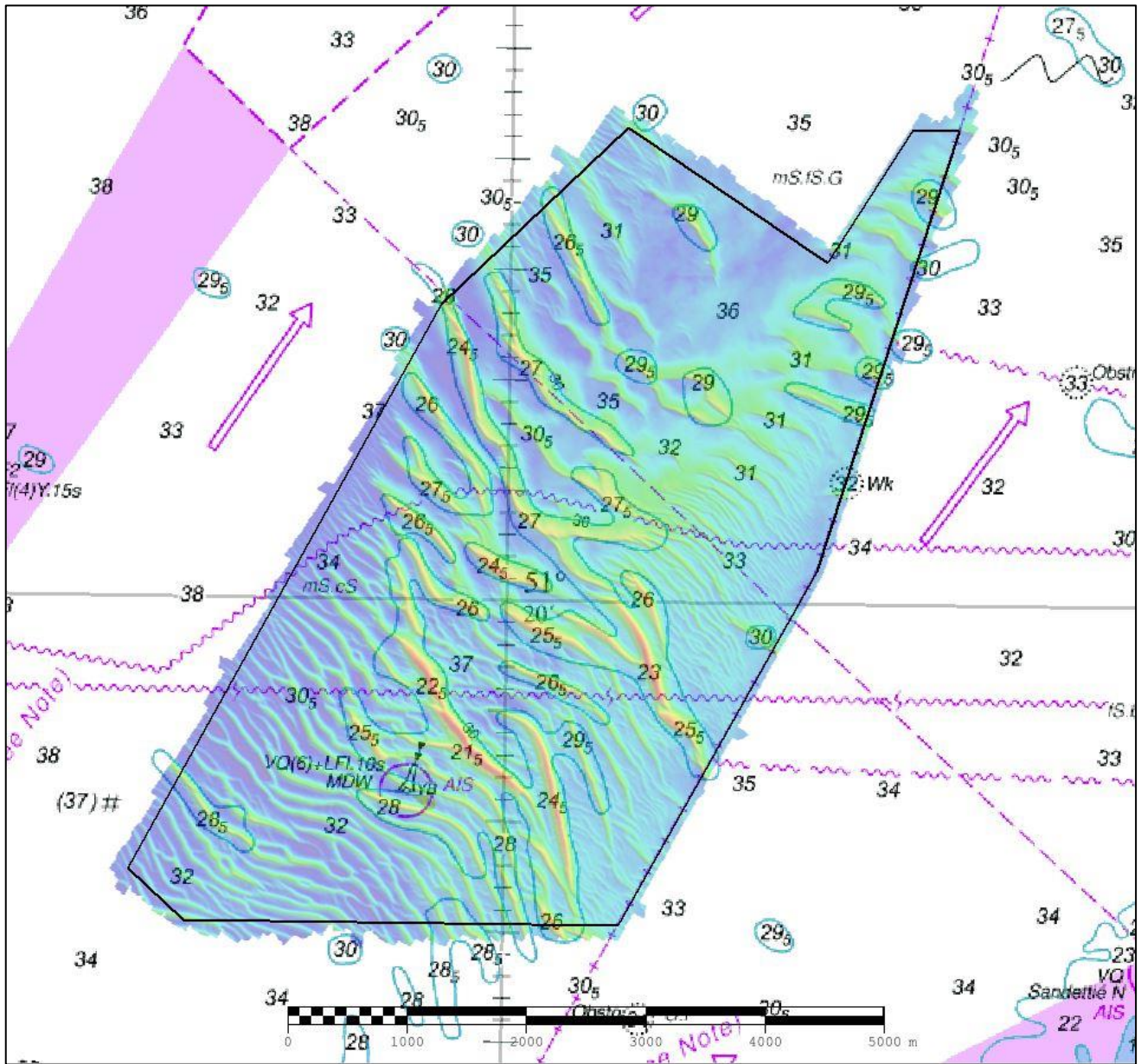


Figure 2: 2019 DWR B2 survey data overlaid on BA Chart 0323-0

3. REFERENCE SURVEY DETAIL

- 3.1 The previous survey conducted as part of the 2013 Routine Resurvey Programme was conducted in November and December 2013 as part of HI1434.
- 3.2 The Report of Survey for this survey is available upon request from the UKHO and the validated bathymetric surfaces are available to download from the Admiralty Marine Data Portal.

4. NEW SURVEY DETAIL

- 4.1 The latest survey as part of 2019 Routine Resurvey Programme was conducted in June and July 2019 as part of HI1648.
- 4.2 The Report of Survey for this survey is available upon request from the UKHO and the validated bathymetric surfaces are available to download from the Admiralty Marine Data Portal.

5. DESCRIPTION OF RECENT BATHYMETRIC CHANGE

- 5.1 The difference surface in Figure 3 shows overall north-easterly migration of sandwaves but some are migrating in a south-westerly direction.
- 5.2 The largest depth differences shown in Figure 4 show differences of +8.8m and -8.8m but are due to shifting of sandwaves.
- 5.3 The controlling depth (which is also the least depth) is located 590m north east of MDW buoy and has changed from 21.9m in 2013 to 22.2m in the 2019 survey.

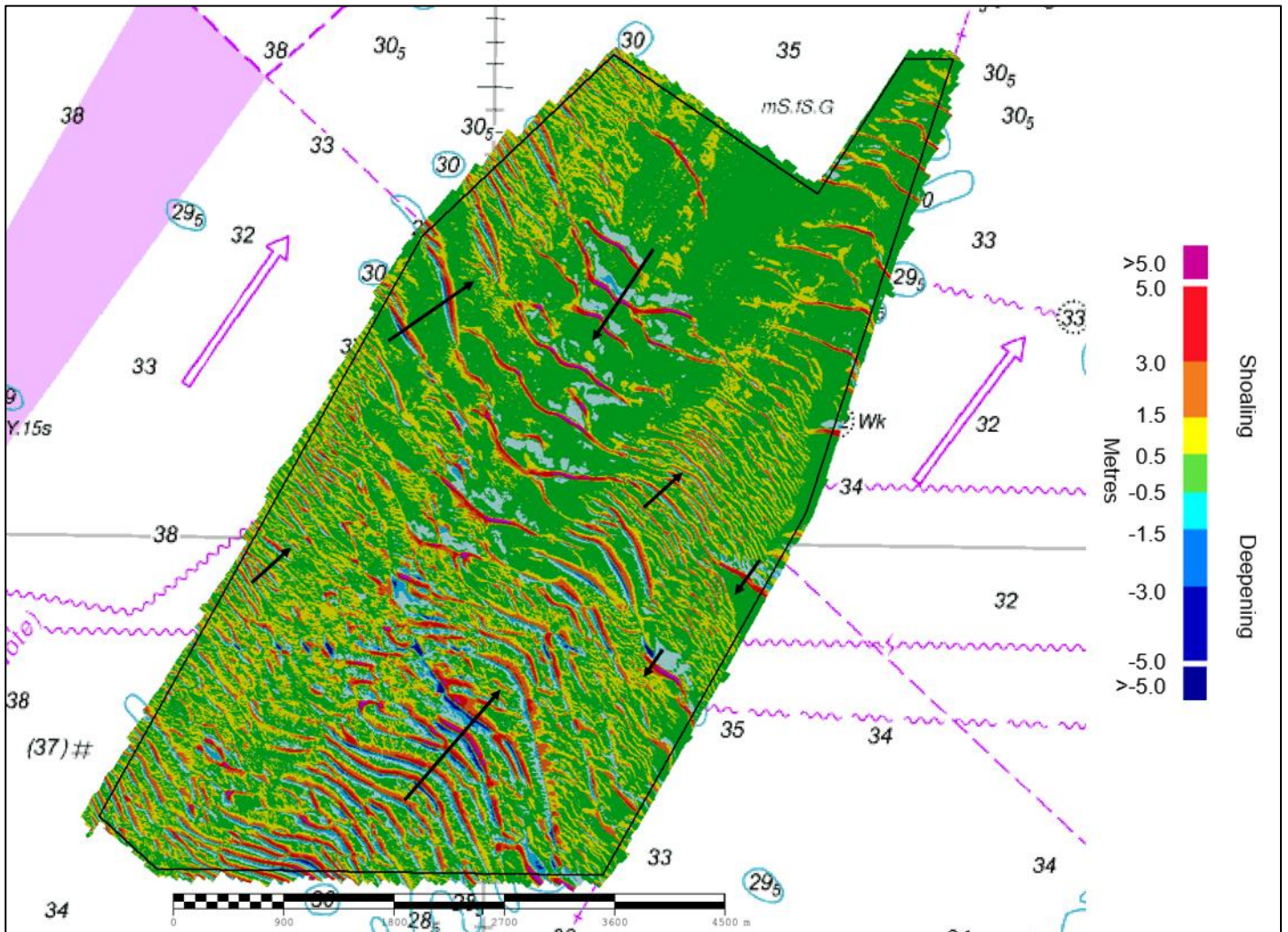


Figure 3: Difference surface showing bathymetric changes between the 2019 and 2013 surveys overlaid on BA Chart 0323_0 (Black arrows represent sandwave migration since 2013 survey)

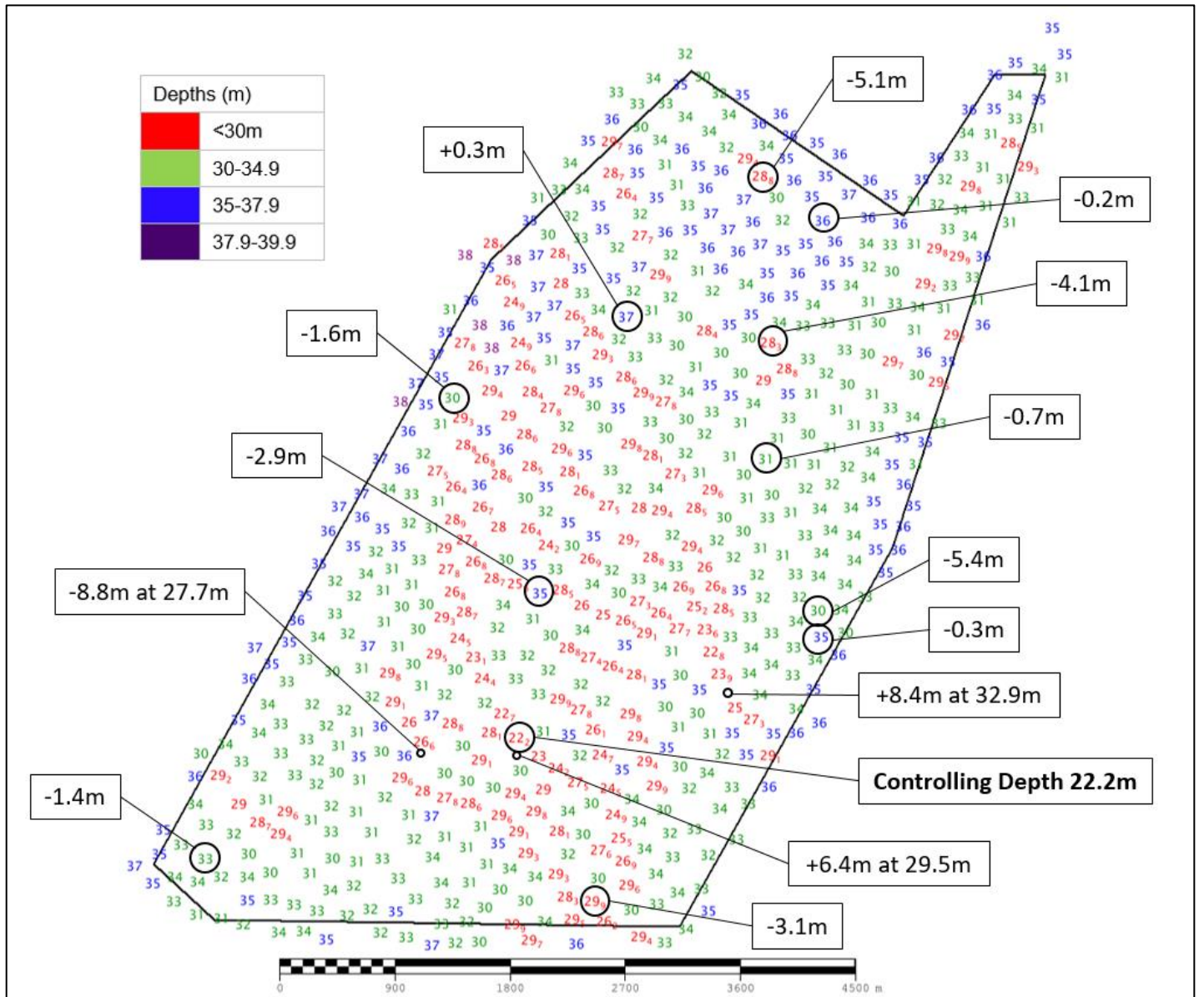


Figure 4: Colour banded depth plot from the 2019 survey with selected depth changes since the 2013 survey. Positive values (+) represent deepening. Negative values (-) represent shoaling.

6. RECOMMENDATIONS FOR FUTURE SURVEYS

Survey Interval

6.1 Given the location of the area, the mobility and changes in the seabed, DWR B2 should remain on the 12-year survey interval.

Survey Area

6.2 The survey limits for DWR B2 are suitable at present.