



By Email Only

Windsor House
Homes England – 6th Floor
50 Victoria Street
London
SW1H 0TL

Dear

RE: Request for Information – RFI3036

Thank you for your recent email, which was processed under the Freedom of Information Act 2000 (FOIA). For clarification, you requested the following information:

1. *On the 1 March 2020, (a) the total number and (b) full-time-equivalent of Homes England (HE) staff (permanent/temporary employees), by grade in HE HR*
2. *On the 1 March 2020, the total number of contingent labour (contractors) staff engaged by HE, by their equivalent grade designation, in HE HR*
3. *A copy of the organogram for HE HR on the 1 March 2020, or the latest one that was made, with a date*
4. *On 1 March 2020, the total number of HE HR staff by office location*

This information request is done under the Freedom of Information Act 2000. For this enquiry, the definition of "HE HR" staff should be taken as those staff deployed within the HR Directorate(s)/ commands responsible for all Human Resources functions.

Please note that this request does not seek any personal data/information and where necessary redaction of any documents is expected (eg. take off all the staff names on any organograms)

Response

We can confirm that we do hold the requested information. We will address each of your points in turn.

1. *On the 1 March 2020, (a) the total number and (b) full-time-equivalent of Homes England (HE) staff (permanent/temporary employees), by grade in HE HR*

Homes England Human Resources at 1/3/20		
Homes England Human Resources staff by grade	Total Number	Full time equivalent
Head of Team	2	2.00
Senior Specialist	5	4.80



Date: 10 July 2020

Our Ref: RFI3036

Tel: 0300 1234 500

Email: infogov@homesengland.gov.uk

Specialist	7	6.46
Analyst	15	15.00
Grand Total	29	28.26

2. *On the 1 March 2020, the total number of contingent labour (contractors) staff engaged by HE, by their equivalent grade designation, in HE HR*

Homes England Human Resources at 1/3/20		
Human Resources Agency Staff	Total Number	Full time equivalent
General Manager	1	1
Head of Team	2	2
Senior Specialist	2	2
Specialist	3	3
Analyst	2	2
Grand Total	10	10.0

3. *A copy of the organogram for HE HR on the 1 March 2020, or the latest one that was made, with a date*

Please find attached to this response Annex A, a copy of the most recent structure chart for Homes England Human Resources. This structure chart is dated 15 May 2020.

4. *On 1 March 2020, the total number of HE HR staff by office location*

Homes England Human Resources at 1/3/20	
Office location	Total Number
Gateshead	26
London	11
Manchester	1
Liverpool	1
Grand Total	39

Right to Appeal

If you are not happy with the information that has been provided or the way in which your request has been handled you may request an internal review by writing to;

The Information Governance Team
Homes England – 6th Floor
Windsor House
50 Victoria Street
London
SW1H 0TL



Homes
England

Date: 10 July 2020

Our Ref: RFI3036

Tel: 0300 1234 500

Email: infogov@homesengland.gov.uk

Making homes happen

Or by email to infogov@homesengland.gov.uk

You may also complain to the Information Commissioner however, the Information Commissioner does usually expect the internal review procedure to be exhausted in the first instance.

The Information Commissioner's details can be found via the following link;

<https://ico.org.uk/>

Please note that the contents of your request and this response are also subject to the Freedom of Information Act 2000. Homes England may be required to disclose your request and our response accordingly.

Yours sincerely,

The Information Governance Team

For Homes England

OFFICIAL

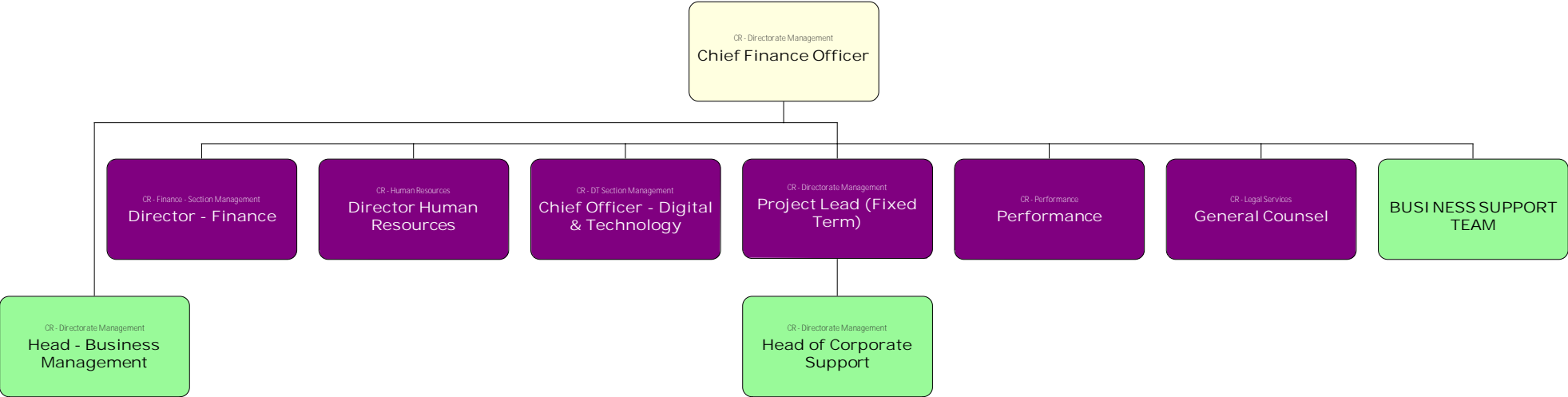
Contents

Contents.....	1
Corporate Resources.....	2
Human Resources.....	3
HR Programmes.....	4
Learning and Organisational Development.....	5
Data and MI.....	6
Pension and Reward.....	7
Recruitment.....	8
Employee Relations.....	9

HE Structure Charts - Corporate Resources

Corporate Resources

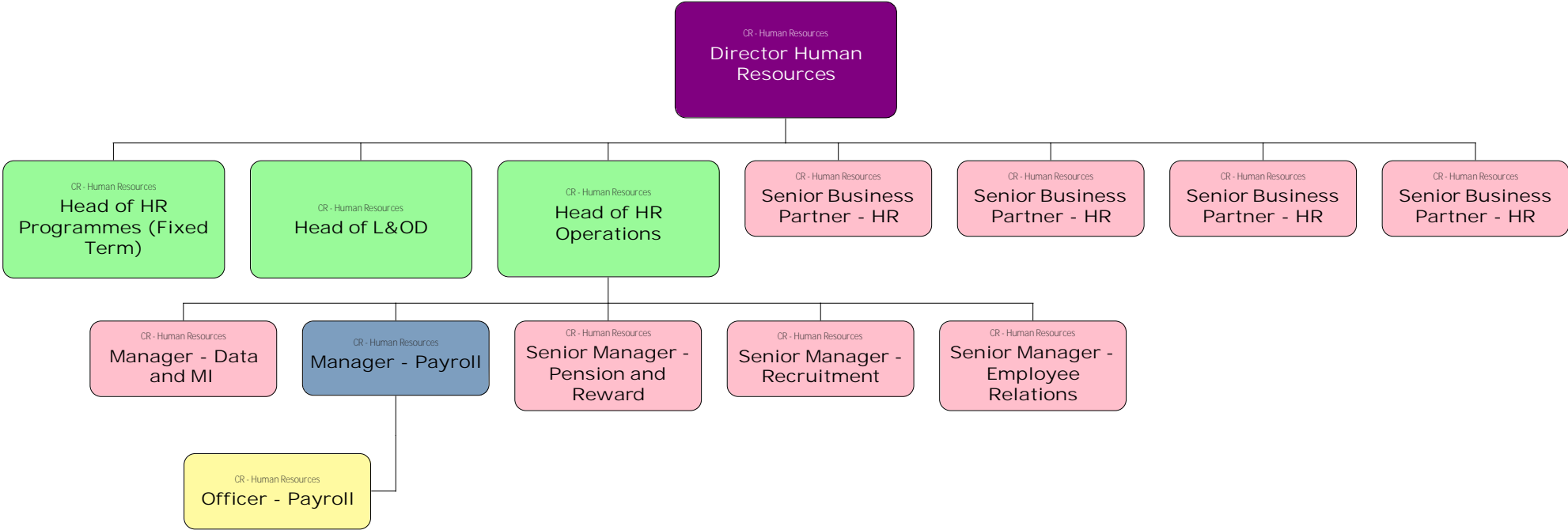
- D
- AD
- HO
- SS
- S
- A



HE Structure Charts - Corporate Resources

Corporate Resources/Human Resources

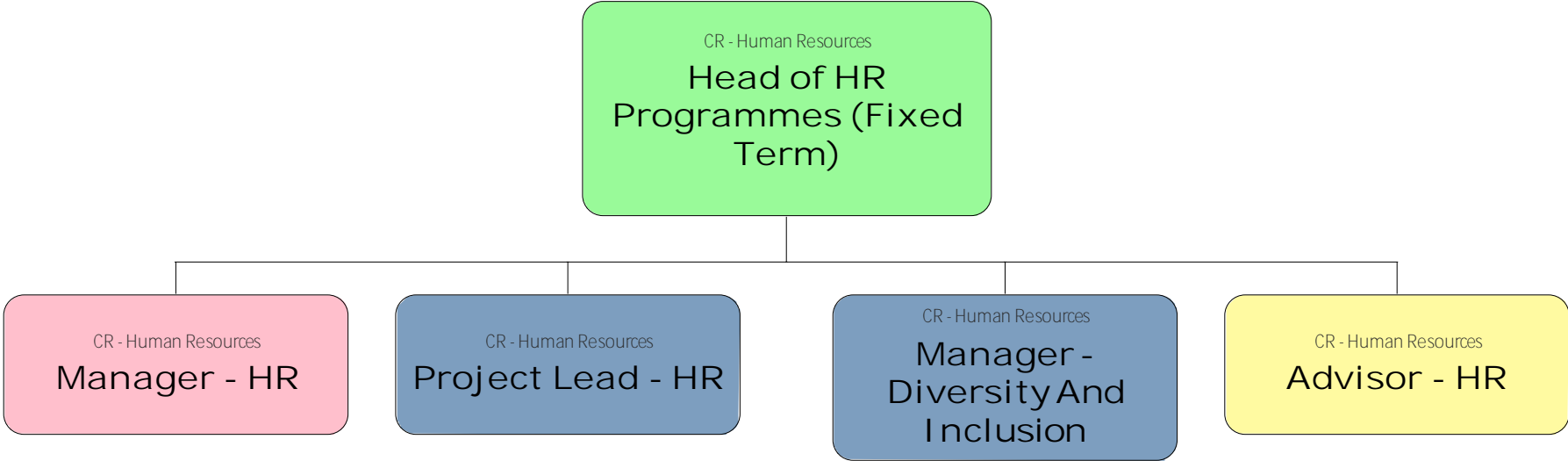
- D
- AD
- HO
- SS
- S
- A



HE Structure Charts - Corporate Resources

Corporate Resources/Human Resources/HR Programmes

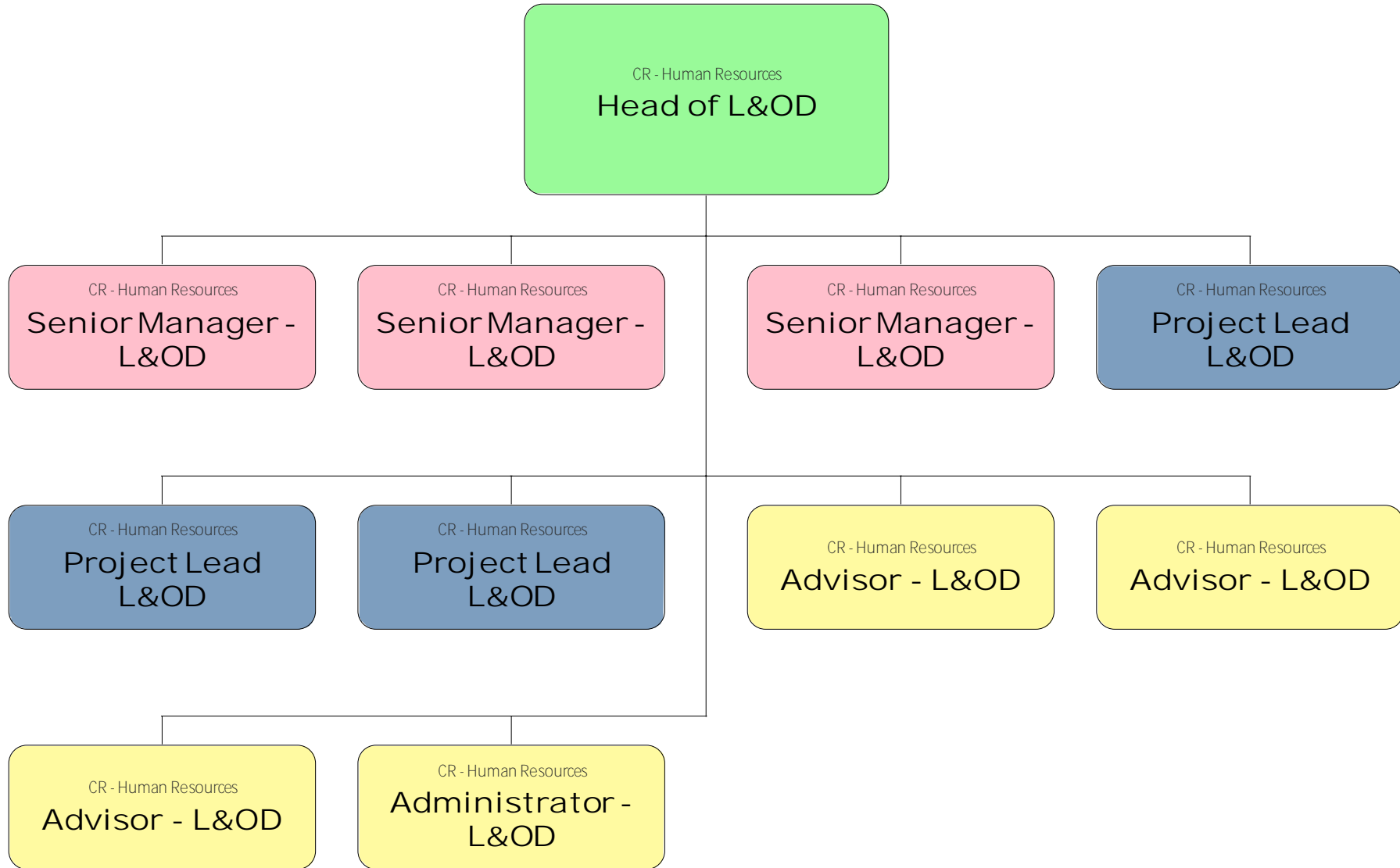
- D
- AD
- HO
- SS
- S
- A



HE Structure Charts - Corporate Resources

- D
- AD
- HO
- SS
- S
- A

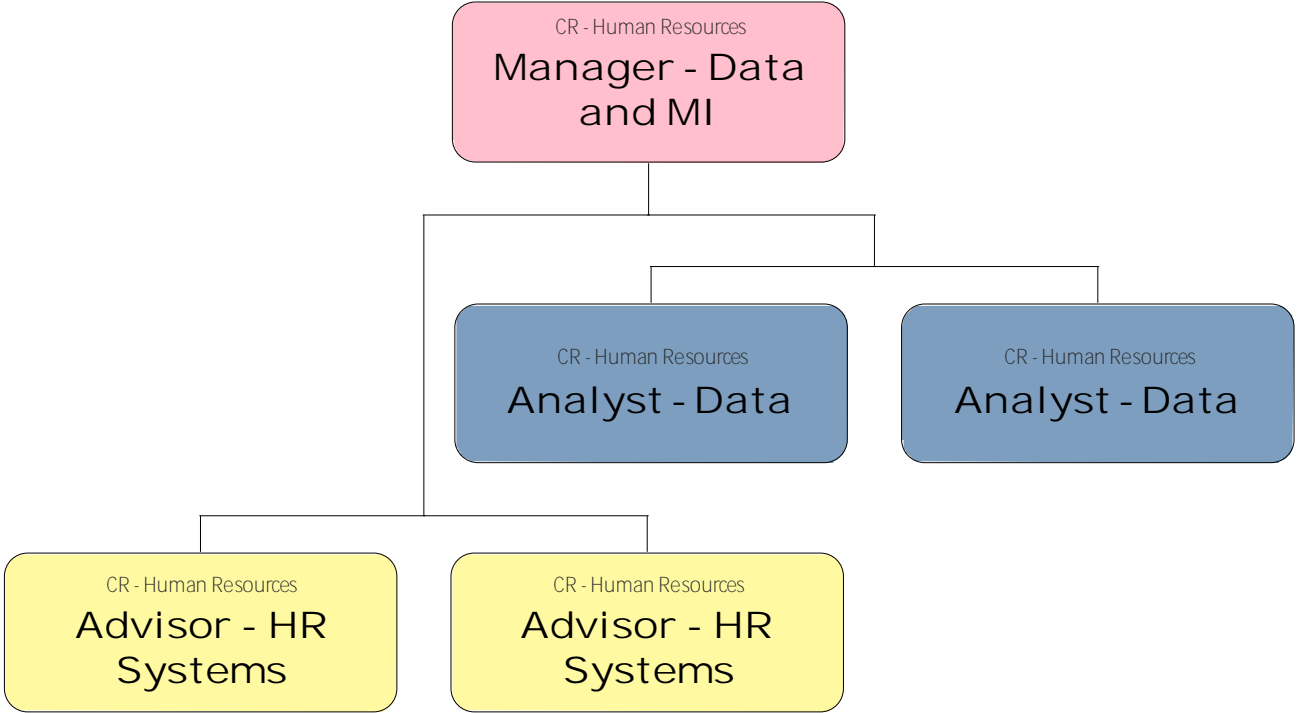
Corporate Resources/Human Resources/Learning and Organisational Development



HE Structure Charts - Corporate Resources

Corporate Resources/Human Resources/Data and MI

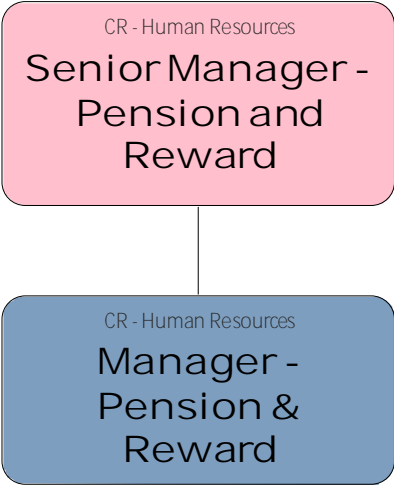
- D
- AD
- HO
- SS
- S
- A



HE Structure Charts - Corporate Resources

Corporate Resources/Human Resources/Pension and Reward

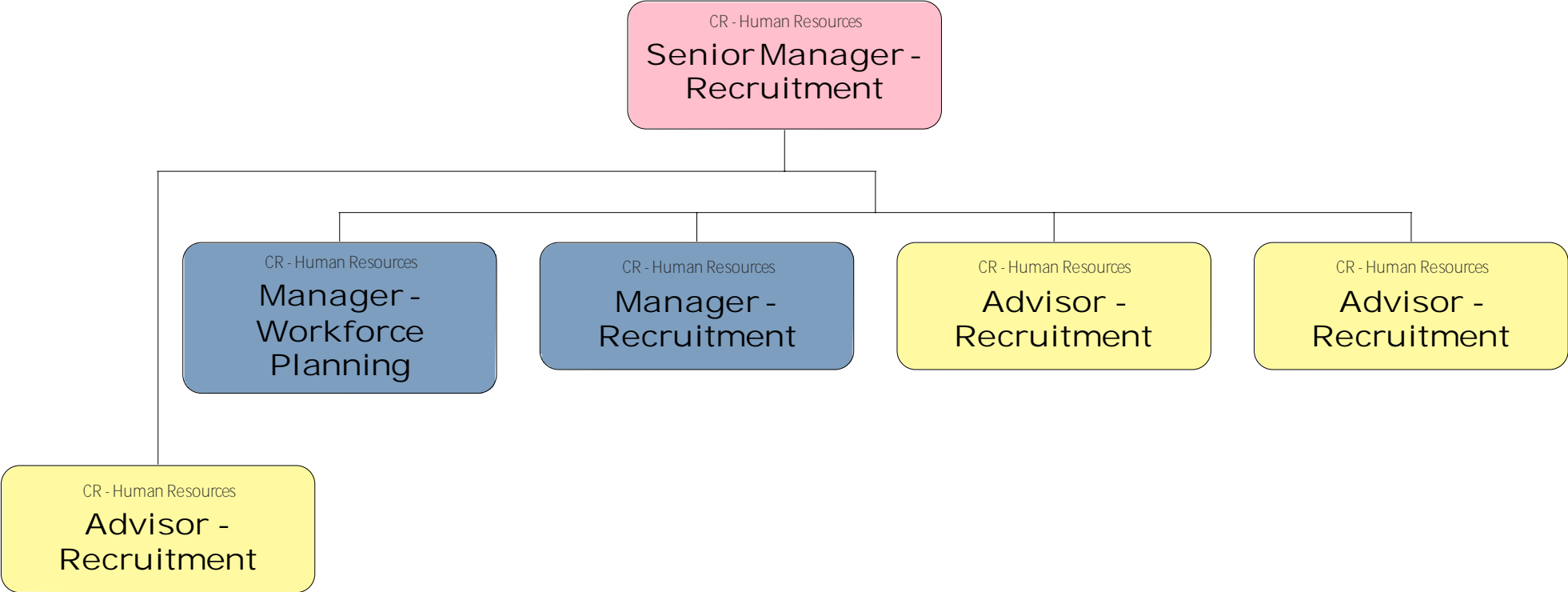
- D
- AD
- HO
- SS
- S
- A



HE Structure Charts - Corporate Resources

Corporate Resources/Human Resources/Recruitment

- D
- AD
- HO
- SS
- S
- A



HE Structure Charts - Corporate Resources

Corporate Resources/Human Resources/Employee Relations

- D
- AD
- HO
- SS
- S
- A

