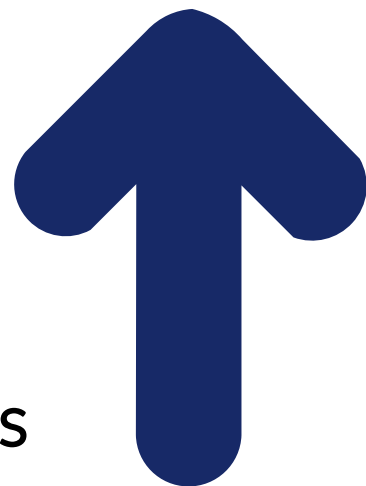




Department for Levelling Up,
Housing & Communities

Levelling Up



Our plan to give people the
same opportunities in all parts
of the UK



**easy
read**



Contents

Page

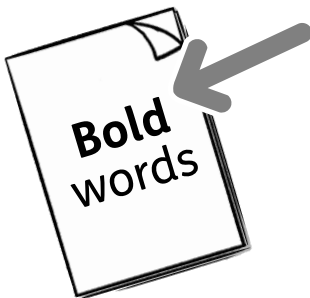
Introduction	3
--------------	---

What we have done so far	5
--------------------------	---

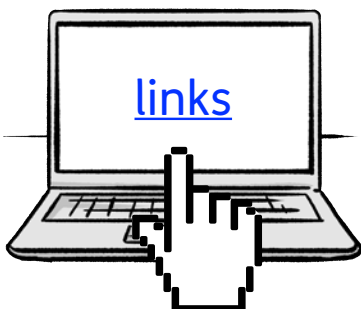
Our plan to level up	11
----------------------	----

What we will do now	17
---------------------	----

Next steps	21
------------	----



In this easy read document, difficult words are in **bold**. We explain what these words mean in the sentence after they have been used.



Some words are [blue and underlined](#). These are links which will go to another website which has more information.

Introduction



The UK is one of the most **unequal** countries in the world.

Unequal means that things are not the same for everyone.



For example, a healthy woman born in Southampton would live on average 12 years less than a healthy woman born in Wokingham.



Levelling up would help to change this.

Levelling up means giving everyone, in all parts of the UK, the same opportunities to make the most of their lives.



To make things fair for everyone, we need to make sure that:

- everyone has the chance to get a good job and education.
- cities and villages are nice places to live.



There are already lots of people and businesses doing well all over the UK.



There are great places to live and work.



We have strong communities with people from all different backgrounds.



But we know this is not the same for people in every part of the UK. So we want to level up, and make things fair for everyone.



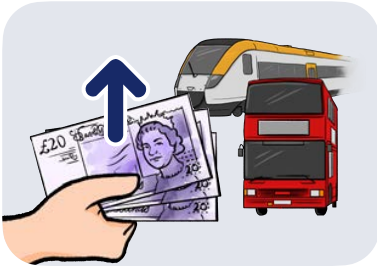
This Easy Read information explains the government's plans to level up.

What we have done so far

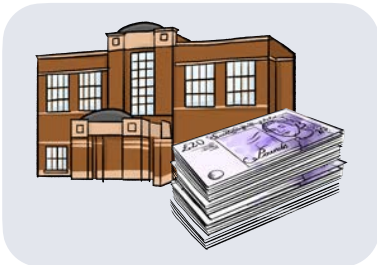
We have already been working to support people and places around the UK. So far we have:



- started to make sure all parts of the UK have fast internet and good mobile phone networks.



- spent more money on buses and trains outside London than we were spending before.



- given more money to schools and shared this money more fairly between schools.



- improved access to adult education and training to help people learn new skills more easily.



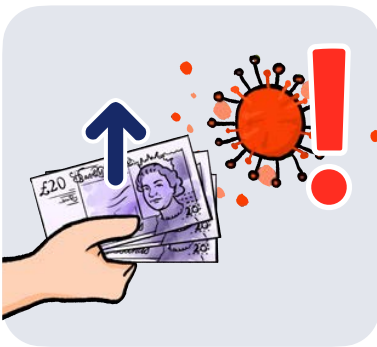
- given more money to the NHS and made plans to build more hospitals by 2030.



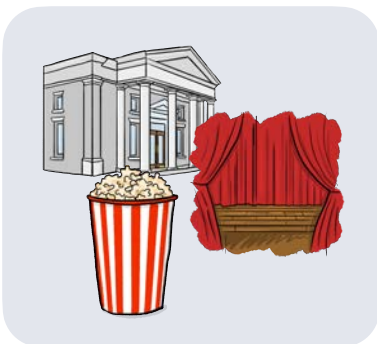
- increased wages so that people are paid fairly for their work.



- put more police officers on our streets to make areas safer.



- given more money and support to areas that have had problems caused by coronavirus.



- supported and spent money on cultural organisations, like museums, theatres and cinemas.



- spent more money on protecting the planet.



- moved some of our government services to areas outside London so that:

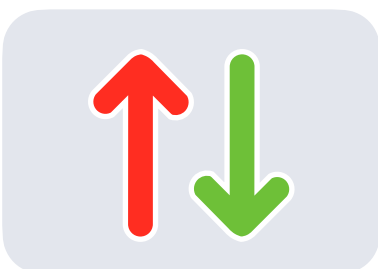


- we create jobs for people in other parts of the UK.
- our services can be closer to the people who use them and help us to make better decisions for everyone.

In the past



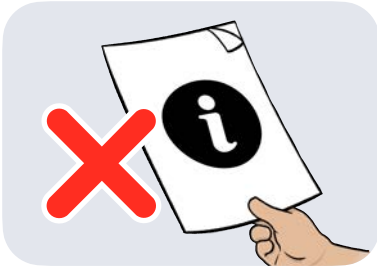
Lots of things have been done in the past to try and make things fairer across the UK.



But they have not all worked. There are different reasons for this, like:



- not doing things evenly across the UK, meaning some areas have improved more than others.
- not doing things for long enough.



- not having enough information available to understand exactly what needed to be done.

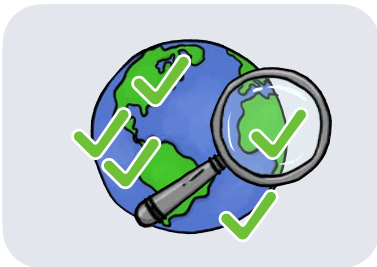


- not doing as much of some things as we should have.

What we have learned



We have looked at what has happened in the past to understand what we need to do differently.



We have looked at what has worked well in other countries.



We have learned that to make a plan that is good for everyone, we need to focus on:

- improving housing across the UK, especially in areas where this is not good.



- improving job opportunities across the UK, especially in areas where these are not good.



- improving business opportunities across the UK, especially in areas where these are not good.



- improving public services like health care and education across the UK.



- supporting local areas to build strong communities that people feel part of.



- having people who can lead the plan in local areas, and supporting them to do it well.

It is important that we put in the time and effort to do these things in the right way. Then everyone in the UK can:



- do well in their own lives, and



- help to make the UK one of the most successful places in the world.

Our plan to level up



We want to make sure you can do well in life wherever you live in the UK.

There are 5 parts to our plan to level up:

1. Missions



This first part of our plan is our 12 missions to level up. These are the things we want to achieve by 2030.



We will focus on the places that need to improve the most.

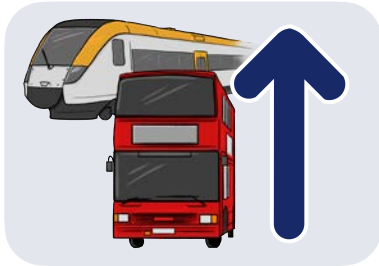


To level up opportunities across the UK by 2030, we want to improve:

1. living standards - this means people earning enough money to be able to afford better things.



2. research and development - this means spending money on ways to make businesses better now and create new businesses in the future.



3. buses and trains - this is so that people can travel around easily.

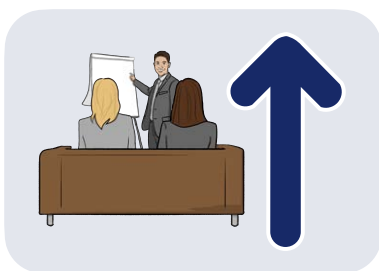


4. internet and mobile phone connections - this is so that people can do more things online.

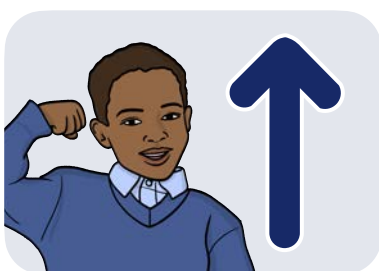
To level up quality of life in the UK by 2030, we want to improve:



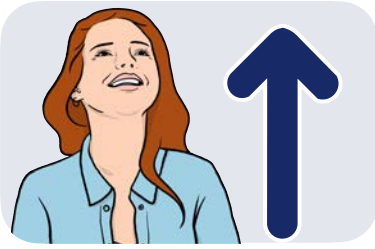
5. education - this is so that more children can learn to read, write and do maths.



6. skills - this means getting more people to train to learn new skills that help them find the right job.

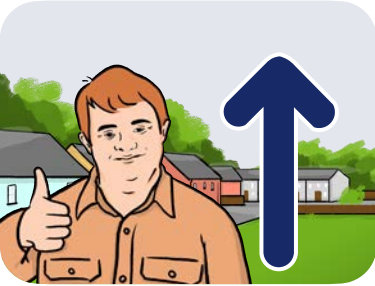


7. health - this is so that people are healthier and live longer.



8. well-being - this means people feel happy and healthy in their body and minds.

To level up support for local areas to build strong communities across the UK by 2030, we want to improve:



9. pride in place - this means people are proud of the area where they live and feel part of their local community.

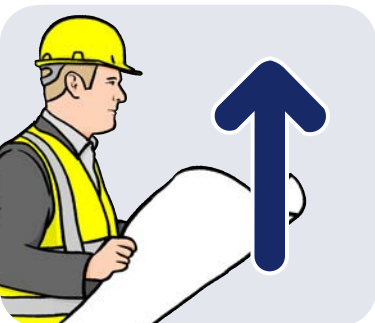


10. housing - this is so that more people can afford to buy their own home, and the standard of rented homes is better.



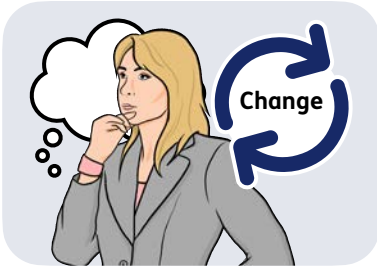
11. crime - this is so that there is less crime in areas where it is most serious at the moment.

To level up the ability for people to take control and lead change locally across the UK by 2030, we want to improve:



12. local leadership - this means giving the people in charge of local areas the money and power they need to carry out plans.

2. Changing the way the central government makes decisions



The second part of our plan is to change the way we make decisions.



We will carry on moving some of our government services out of London.



This will help local communities get more involved in the decisions we make.

3. Supporting local areas



The third part of our plan is to do more to support people and businesses in local areas.



We will be giving local leaders more power to make important decisions in their areas.

4. Changing how we use information

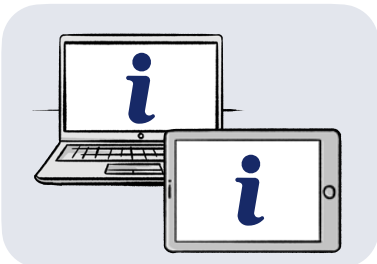
The fourth part of our plan is to improve:



- the way we collect information about how we spend government money.



- how successful government services are.



We will use new technology, like computers and machines, to help us do this.



The information will help us to check we are being fair and spending money on the right things.

5. Making sure we achieve our missions



The fifth part of our plan is to make sure we are doing what we need to do to achieve our missions by 2030.



To do this we will:

- set up a special group to check that our plans are working. The group will be called the ‘Levelling Up Advisory Council’.
- write a report each year which tells the public:
 - how much progress is being made on the missions.
 - what we have done so far.



What we will do now



Our 12 missions are all things that will take time. That is why we have said we want to achieve our missions over 10 years, by 2030.

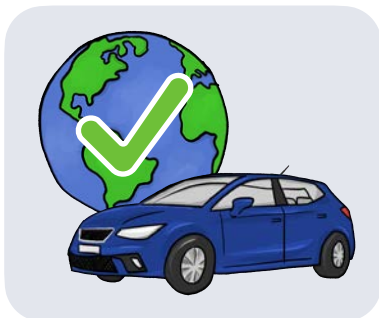


There are some actions we can take now to start making a difference to our missions straight away.



Some of these actions include:

- spending more money on research and development in science and technology.



- supporting organisations which build things that are good for the environment, like electric cars.



- giving more money to support projects which are improving local areas and teaching local people new skills.



- providing more support for disabled people to get jobs and keep jobs.



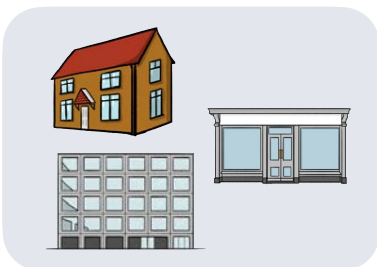
- writing a new plan that aims to help more people have a healthy lifestyle.



- working together better across government departments to share ideas and best ways of working.



- giving money to help local communities improve their own areas and take pride in where they live.



- starting to build new good quality housing, shops and offices.



- looking at ways to make sure landlords rent out their buildings in town centres so they're not left empty.



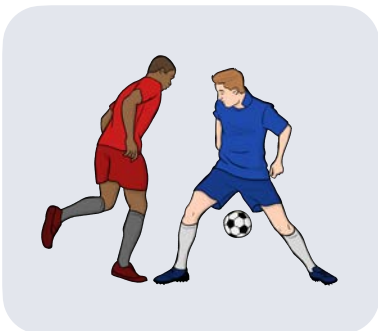
- making more green spaces like parks and forests accessible to people.



- letting more people know about our plans to level up and encouraging more people to help make the plans work.



- spending money now to help any smaller areas that are being left behind.



- looking at what we can do protect football pitches and teams in local areas.



- spending more money on activities for children outside of school.

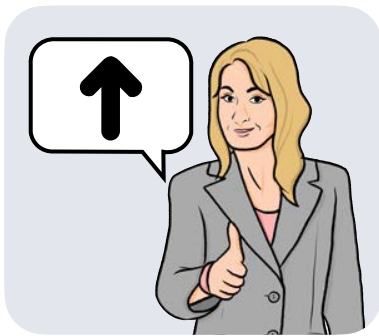


- setting up systems for young people to pay for their crimes by doing work to improve their local area.



- helping local areas to improve schools and keep their best teachers.

Next steps



We will keep talking to people about our plan, to look at what is working and what needs to improve.



We will let everyone know about any changes to the plan as we go along.



To see our full report go to:
www.gov.uk/government/publications/levelling-up-the-united-kingdom