

Dynamic CO-CIN report to SAGE and NERVTAG

Executive summary

Includes patients admitted on or after 01 December 2021

There are 19381 patients included in CO-CIN. Of these, 1406 patient(s) have died and 2328 required ICU. 11824 have been discharged home.

Admission

Figure 1

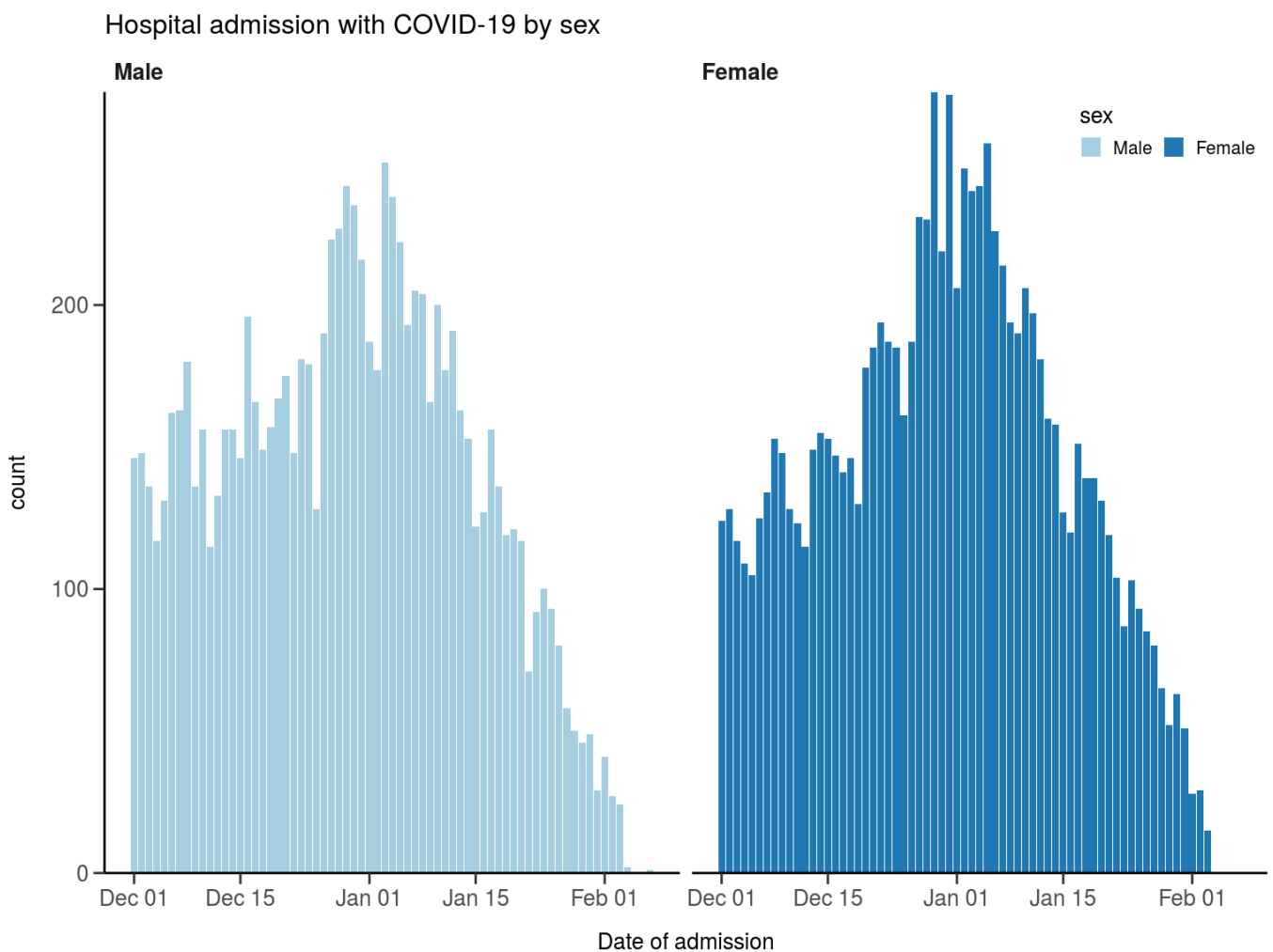
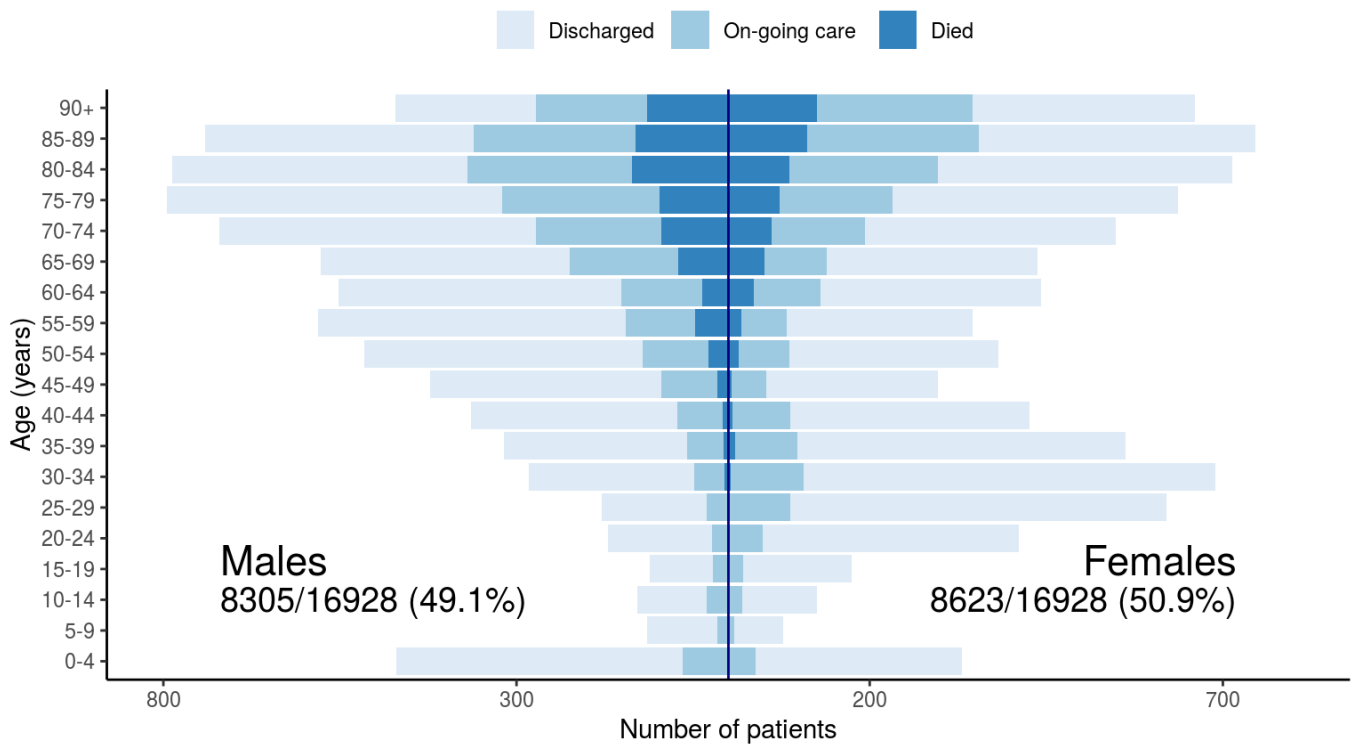


Figure 2

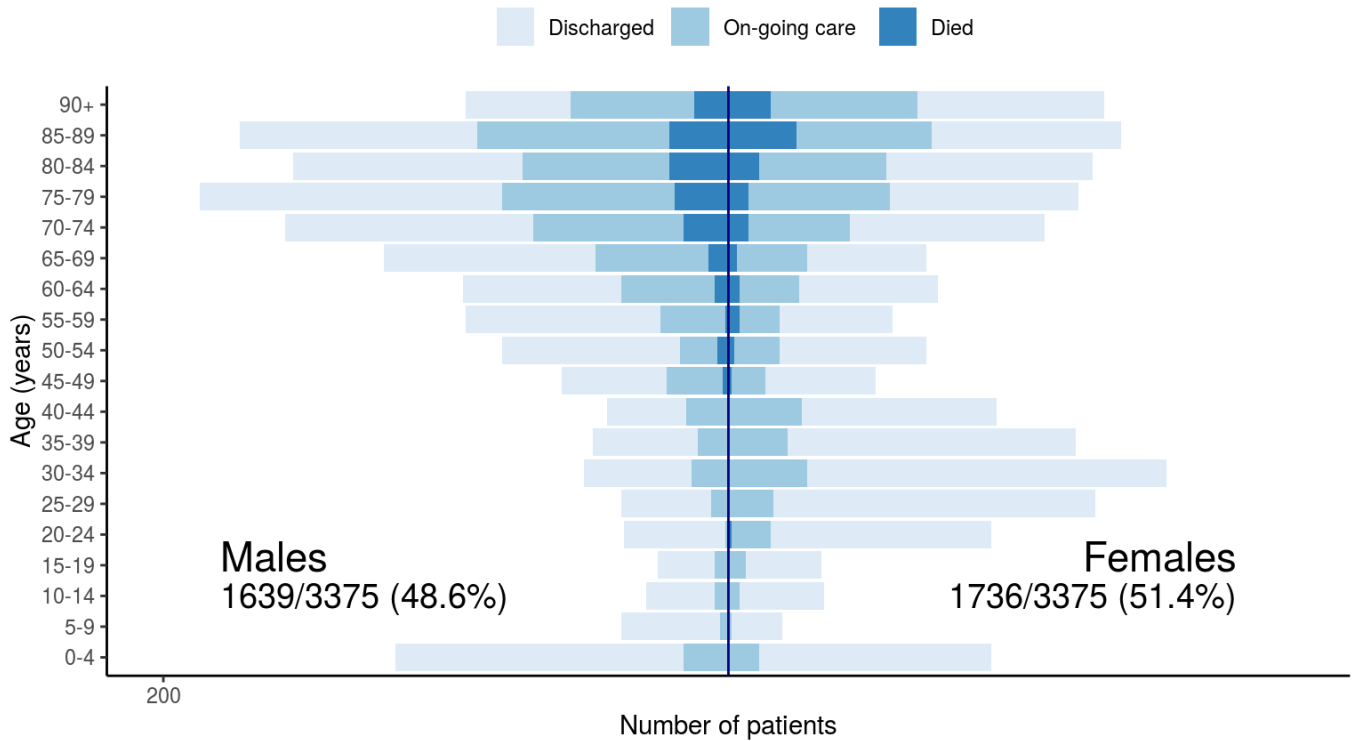
Patients with outcome stratified by age, and sex

All



Patients with outcome stratified by age, and sex

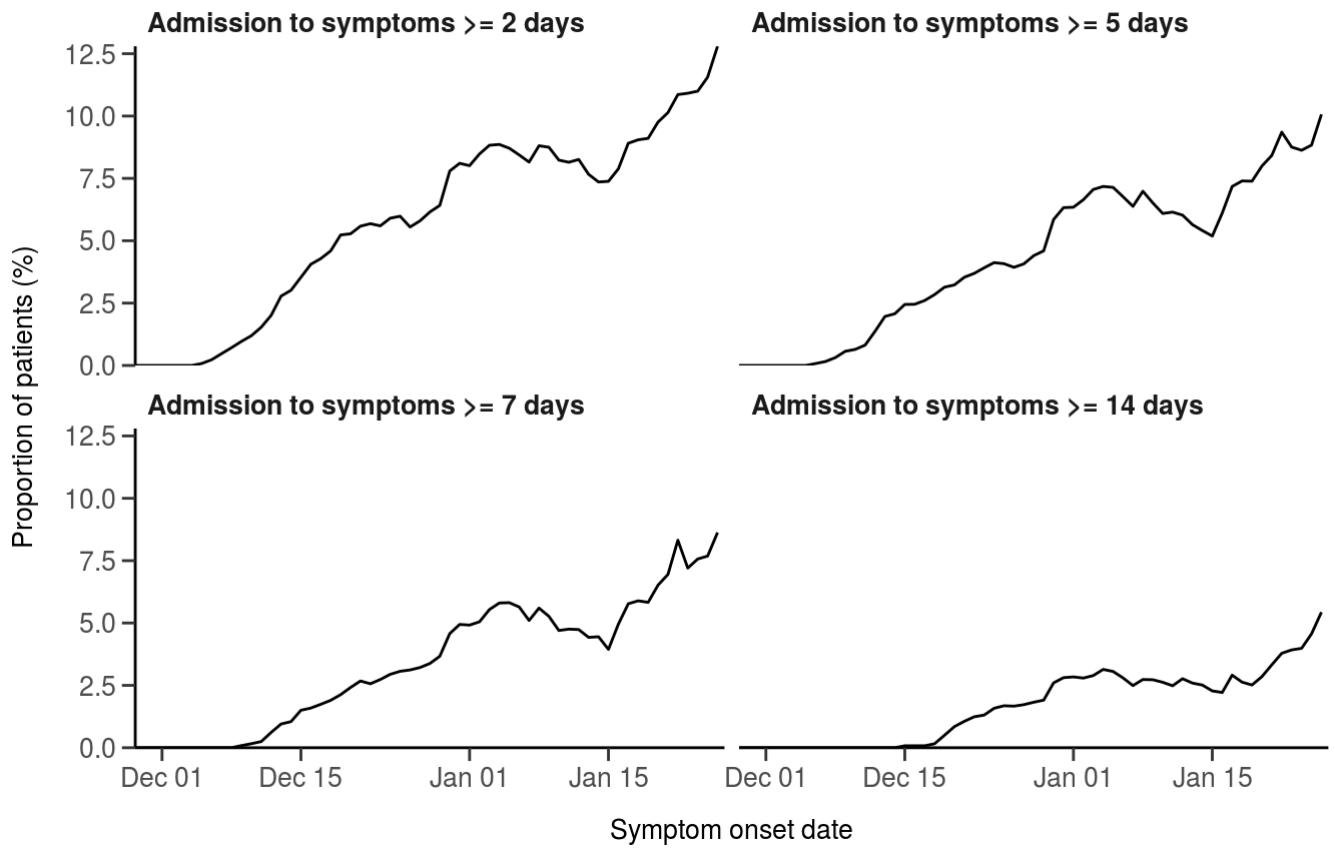
Admitted ≥ 14 days and ≤ 28 days ago



Nosocomial

Figure 3

Proportion with symptom onset occurring after hospital admission
7-day rolling percentage. n = 11609



Patient flow

Figure 4A - All patients

N = 17453

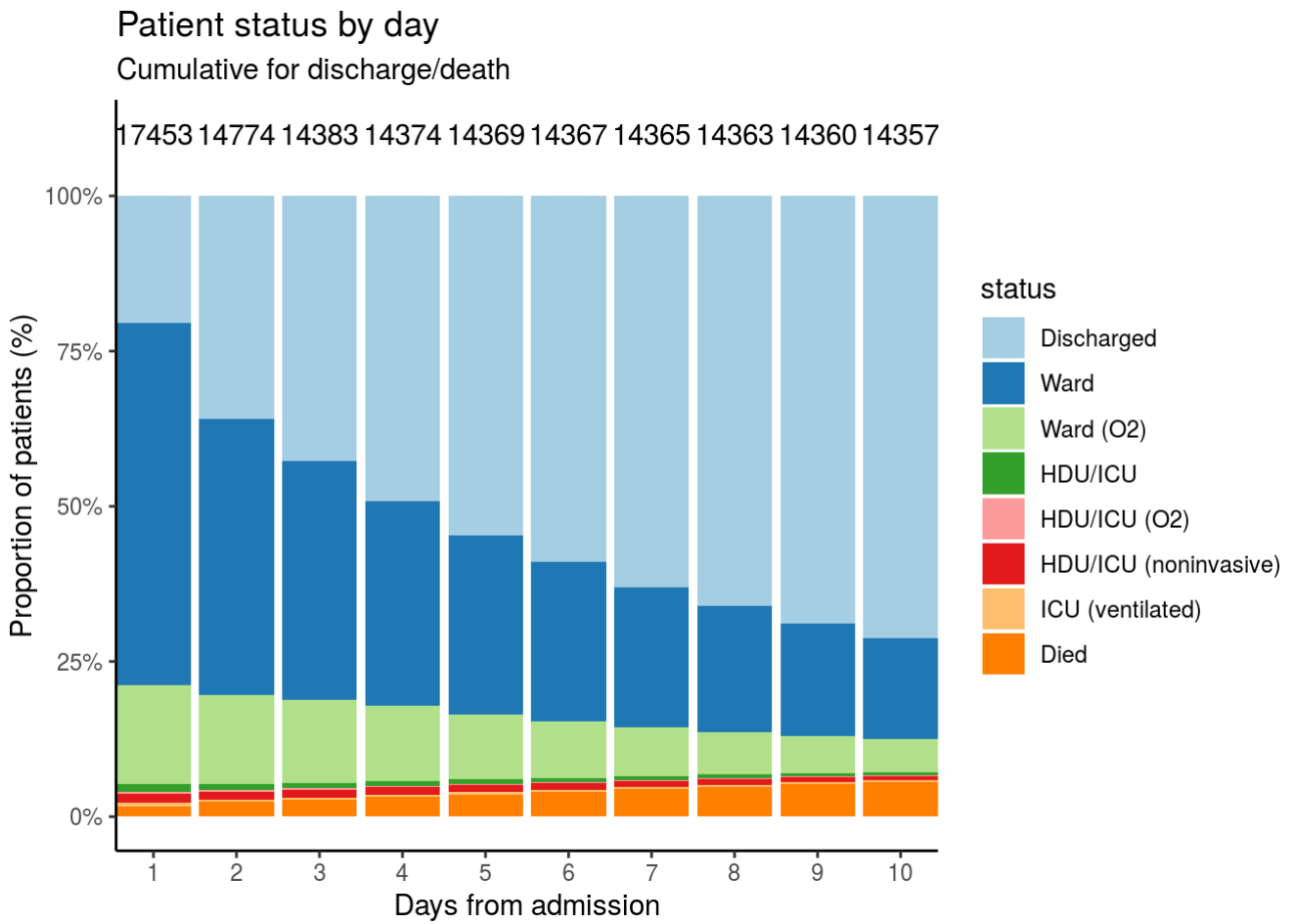
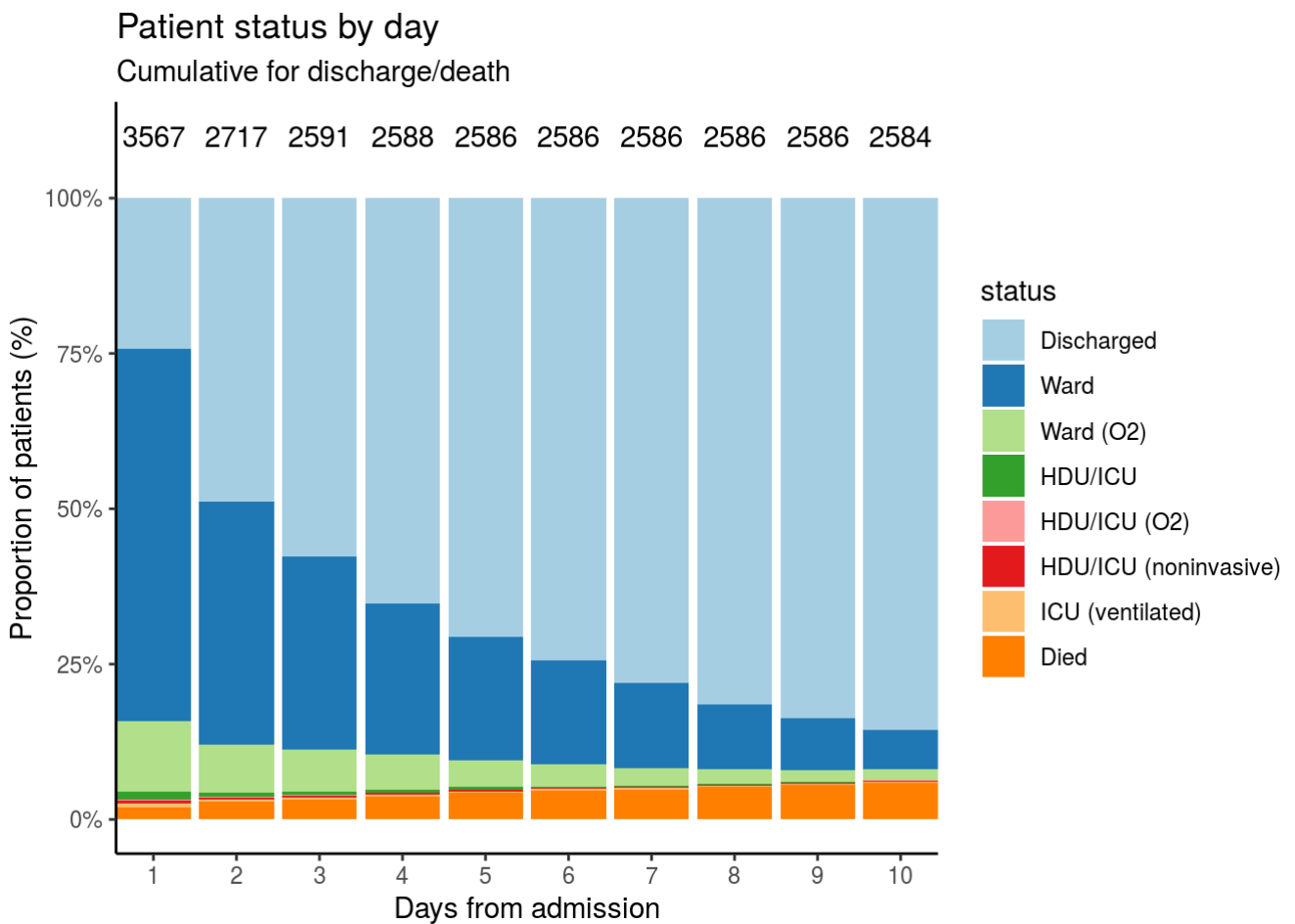


Figure 4B - Patients admitted ≥ 14 days and ≤ 28 days ago

N = 3567



Oxygen requirement

Figure 5A - All patients

N = 14374

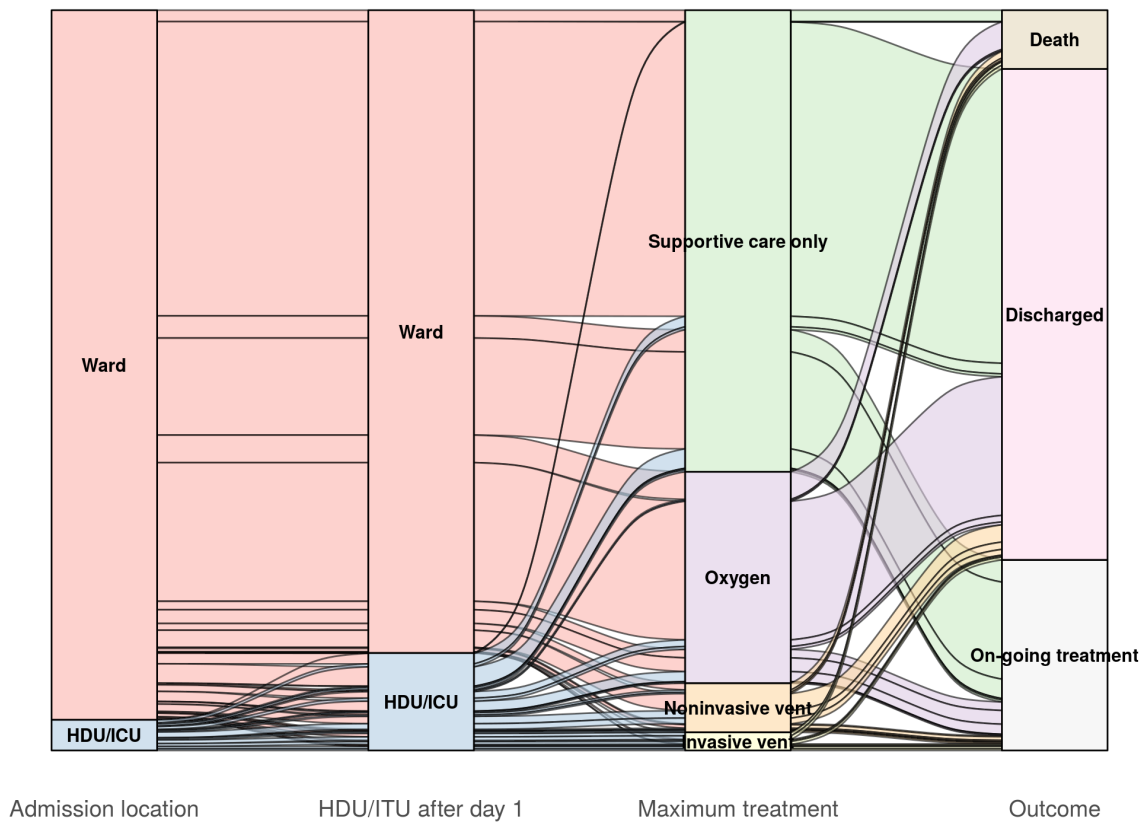
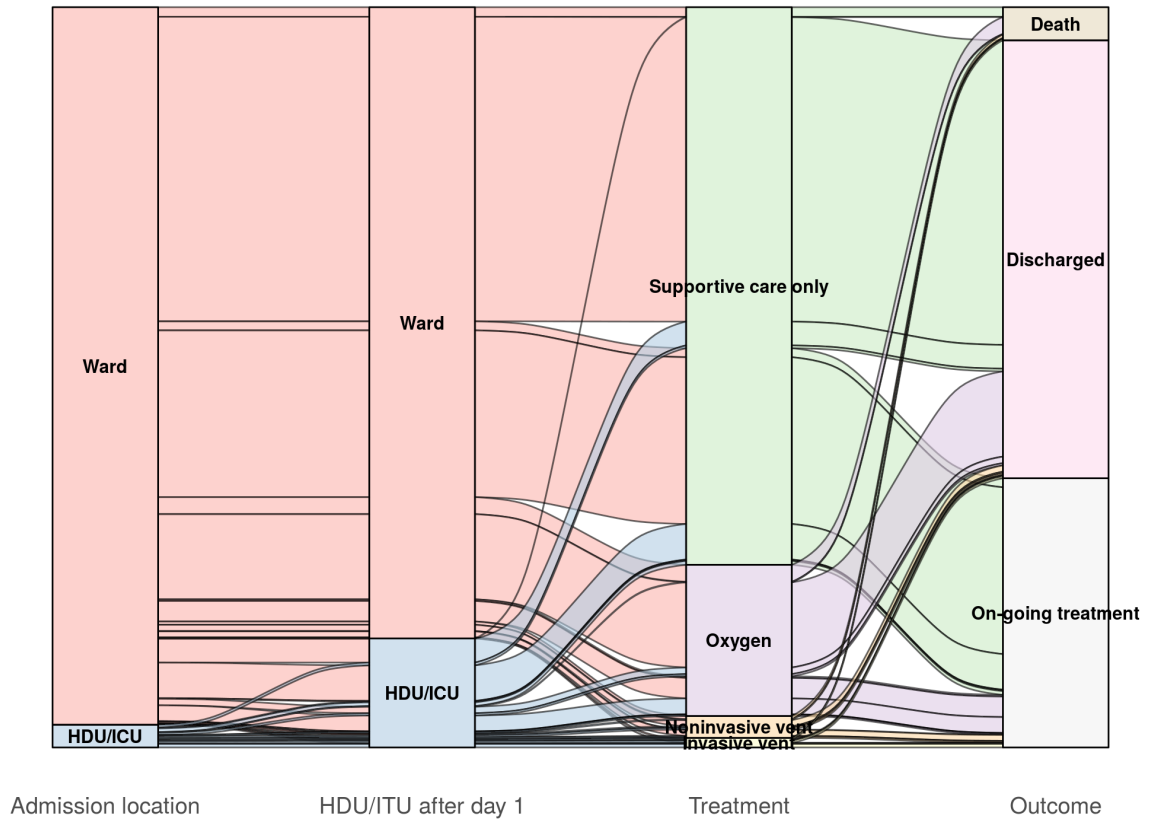


Figure 5B - Patients admitted ≥ 14 days and ≤ 28 days ago

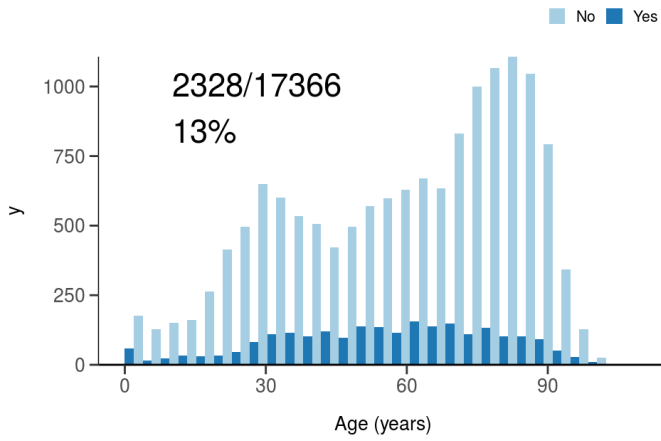
N = 2802



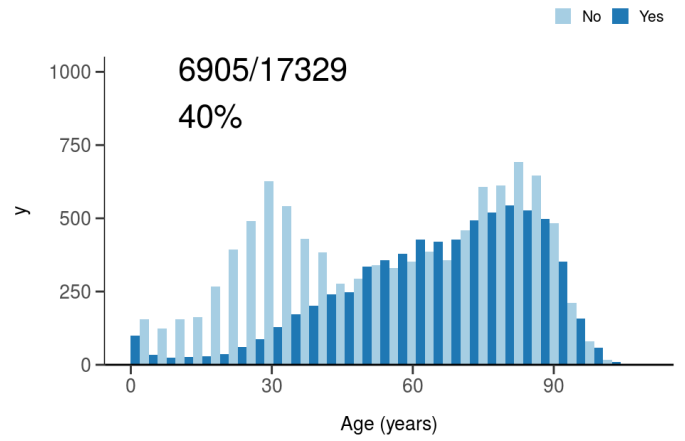
Treatment

Figure 6

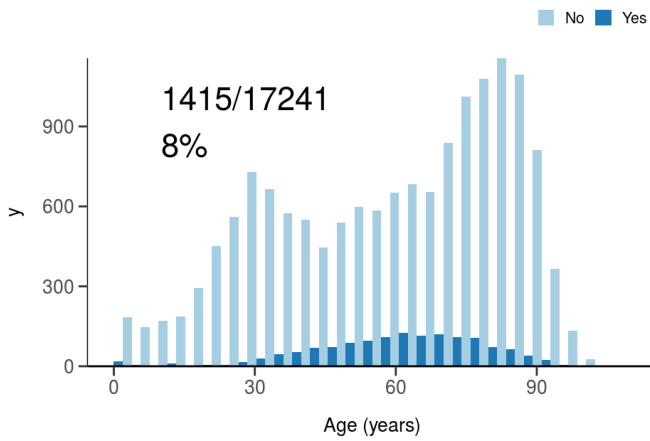
ICU/HDU admission
Figure 10A



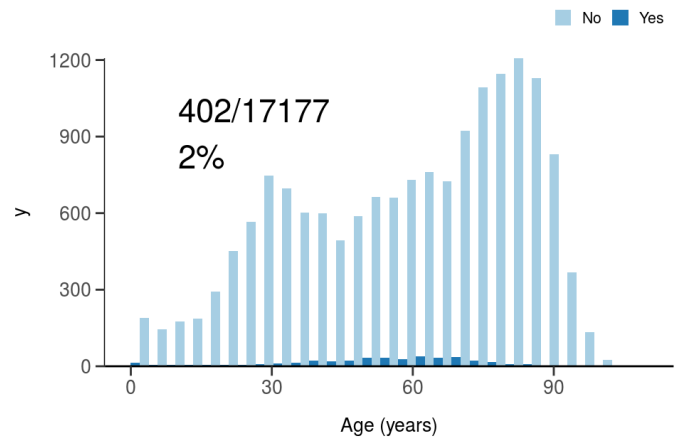
High flow oxygen
Figure 10B



Noninvasive ventilation
Figure 10C



Invasive ventilation
Figure 10D



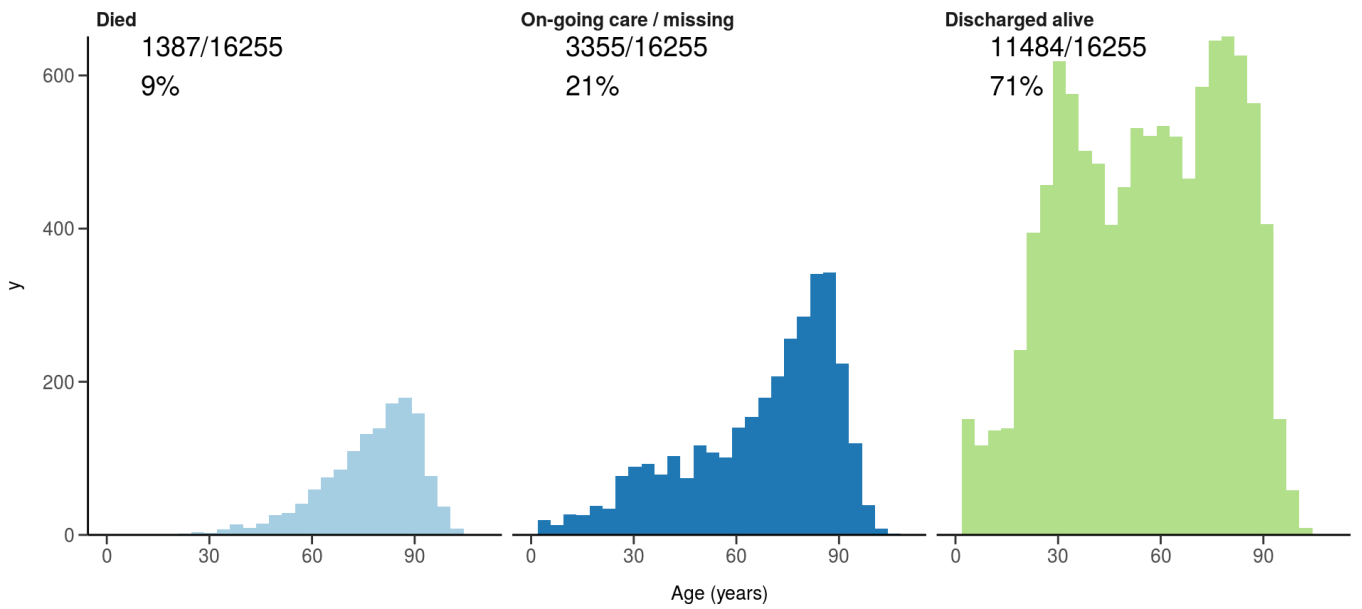
Status in patients admitted ≥ 14 days from today

Figure 7

Where outcome is not reported, on-going care is assumed.

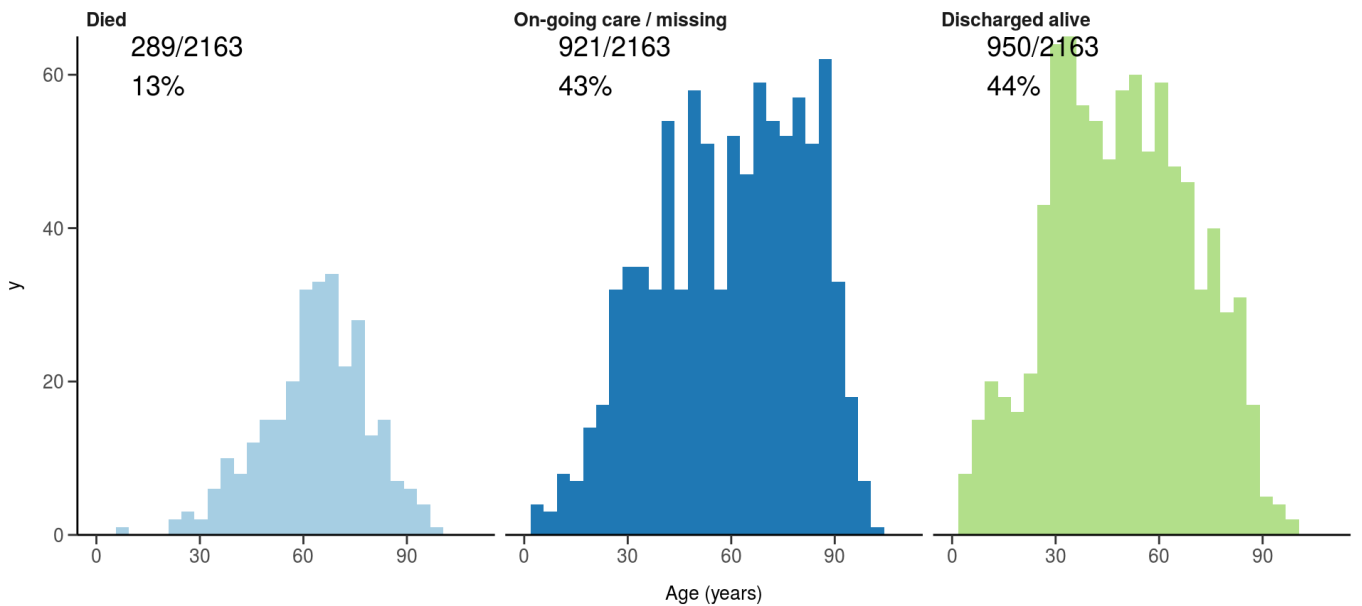
All: status in patients admitted ≥ 14 days ago

Figure 11A



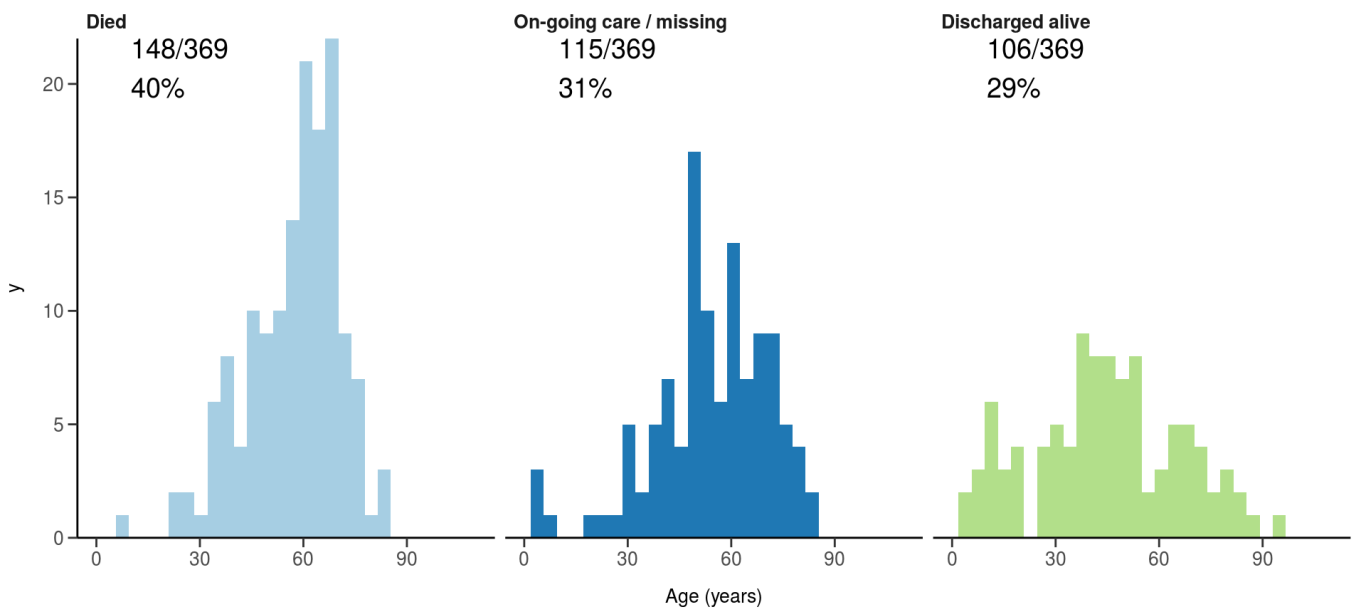
ICU/HDU admissions: status in patients admitted ≥ 14 days ago

Figure 11B



Invasive ventilation: status in patients admitted ≥ 14 days ago

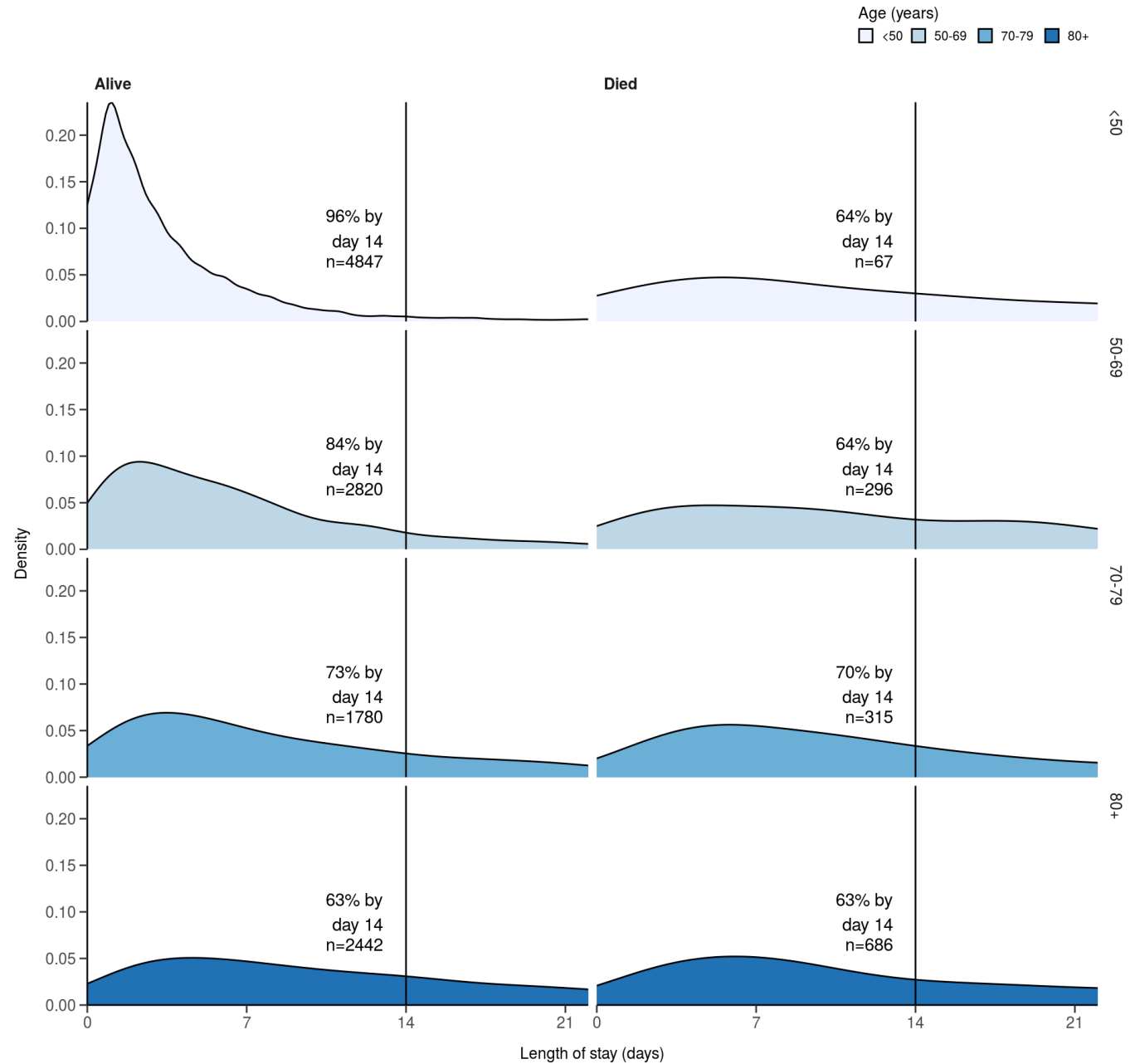
Figure 11c



Length of stay stratified by age

####Figure 8

Length of stay stratified by age and mortality
Proportion who reach outcome by day 14 shown



Data

Table for figure 2A

age.factor	sex	status	n
0-4	Male	Discharged	405
0-4	Male	On-going care	65
0-4	Female	Discharged	293
0-4	Female	On-going care	37

age.factor	sex	status	n
0-4	Female	Died	1
0-4	Not specified	Discharged	1
0-4	Not specified	On-going care	1
5-9	Male	Discharged	99
5-9	Male	On-going care	15
5-9	Male	Died	1
5-9	Female	Discharged	69
5-9	Female	On-going care	8
10-14	Male	Discharged	98
10-14	Male	On-going care	31
10-14	Female	Discharged	106
10-14	Female	On-going care	18
10-14	Female	Died	1
10-14	NA	Discharged	2
15-19	Male	Discharged	89
15-19	Male	On-going care	21
15-19	Male	Died	1
15-19	Female	Discharged	153
15-19	Female	On-going care	21
15-19	Not specified	On-going care	1
15-19	NA	Discharged	1
20-24	Male	Discharged	148
20-24	Male	On-going care	22
20-24	Male	Died	1
20-24	Female	Discharged	363
20-24	Female	On-going care	46
20-24	Female	Died	2
20-24	Not specified	On-going care	1
25-29	Male	Discharged	148
25-29	Male	On-going care	29
25-29	Male	Died	2
25-29	Female	Discharged	533

age.factor	sex	status	n
25-29	Female	On-going care	85
25-29	Female	Died	2
25-29	Not specified	On-going care	1
25-29	NA	Discharged	1
30-34	Male	Discharged	235
30-34	Male	On-going care	43
30-34	Male	Died	5
30-34	Female	Discharged	583
30-34	Female	On-going care	103
30-34	Female	Died	3
35-39	Male	Discharged	260
35-39	Male	On-going care	51
35-39	Male	Died	7
35-39	Female	Discharged	464
35-39	Female	On-going care	89
35-39	Female	Died	9
40-44	Male	Discharged	292
40-44	Male	On-going care	64
40-44	Male	Died	8
40-44	Female	Discharged	339
40-44	Female	On-going care	81
40-44	Female	Died	6
40-44	Not specified	On-going care	2
45-49	Male	Discharged	327
45-49	Male	On-going care	79
45-49	Male	Died	16
45-49	Female	Discharged	242
45-49	Female	On-going care	49
45-49	Female	Died	5
45-49	Not specified	On-going care	1
45-49	NA	Discharged	1
50-54	Male	Discharged	394

age.factor	sex	status	n
50-54	Male	On-going care	94
50-54	Male	Died	28
50-54	Female	Discharged	296
50-54	Female	On-going care	71
50-54	Female	Died	15
50-54	Not specified	On-going care	1
55-59	Male	Discharged	436
55-59	Male	On-going care	98
55-59	Male	Died	47
55-59	Female	Discharged	264
55-59	Female	On-going care	64
55-59	Female	Died	18
55-59	Not specified	Discharged	1
55-59	Not specified	On-going care	2
60-64	Male	Discharged	400
60-64	Male	On-going care	115
60-64	Male	Died	37
60-64	Female	Discharged	312
60-64	Female	On-going care	95
60-64	Female	Died	36
60-64	Not specified	On-going care	2
65-69	Male	Discharged	352
65-69	Male	On-going care	154
65-69	Male	Died	71
65-69	Female	Discharged	298
65-69	Female	On-going care	88
65-69	Female	Died	51
65-69	Not specified	Discharged	1
65-69	Not specified	On-going care	5
70-74	Male	Discharged	449
70-74	Male	On-going care	177
70-74	Male	Died	95

age.factor	sex	status	n
70-74	Female	Discharged	355
70-74	Female	On-going care	132
70-74	Female	Died	61
70-74	Not specified	On-going care	3
70-74	NA	Discharged	1
75-79	Male	Discharged	474
75-79	Male	On-going care	224
75-79	Male	Died	97
75-79	Female	Discharged	404
75-79	Female	On-going care	159
75-79	Female	Died	73
75-79	Not specified	Discharged	1
75-79	Not specified	On-going care	7
75-79	NA	Discharged	1
80-84	Male	Discharged	419
80-84	Male	On-going care	233
80-84	Male	Died	136
80-84	Female	Discharged	417
80-84	Female	On-going care	210
80-84	Female	Died	86
80-84	Not specified	Discharged	2
80-84	Not specified	On-going care	8
80-84	NA	Discharged	1
85-89	Male	Discharged	380
85-89	Male	On-going care	229
85-89	Male	Died	132
85-89	Female	Discharged	392
85-89	Female	On-going care	243
85-89	Female	Died	111
85-89	Not specified	On-going care	1
85-89	NA	On-going care	2
90+	Male	Discharged	200

age.factor	sex	status	n
90+	Male	On-going care	157
90+	Male	Died	115
90+	Female	Discharged	315
90+	Female	On-going care	221
90+	Female	Died	125
90+	Not specified	Discharged	1
90+	Not specified	On-going care	4
90+	NA	Died	1

Table for figure 2B

age.factor	sex	status	n
0-4	Male	Discharged	102
0-4	Male	On-going care	16
0-4	Female	Discharged	82
0-4	Female	On-going care	11
0-4	Not specified	Discharged	1
5-9	Male	Discharged	35
5-9	Male	On-going care	3
5-9	Female	Discharged	18
5-9	Female	On-going care	1
10-14	Male	Discharged	24
10-14	Male	On-going care	5
10-14	Female	Discharged	30
10-14	Female	On-going care	4
10-14	NA	Discharged	1
15-19	Male	Discharged	20
15-19	Male	On-going care	5
15-19	Female	Discharged	27
15-19	Female	On-going care	6
20-24	Male	Discharged	36
20-24	Male	On-going care	1
20-24	Female	Discharged	78

age.factor	sex	status	n
20-24	Female	On-going care	14
20-24	Female	Died	1
20-24	Not specified	On-going care	1
25-29	Male	Discharged	32
25-29	Male	On-going care	6
25-29	Female	Discharged	114
25-29	Female	On-going care	16
30-34	Male	Discharged	38
30-34	Male	On-going care	13
30-34	Female	Discharged	127
30-34	Female	On-going care	28
35-39	Male	Discharged	37
35-39	Male	On-going care	11
35-39	Female	Discharged	102
35-39	Female	On-going care	21
40-44	Male	Discharged	28
40-44	Male	On-going care	15
40-44	Female	Discharged	69
40-44	Female	On-going care	26
40-44	Not specified	On-going care	1
45-49	Male	Discharged	37
45-49	Male	On-going care	20
45-49	Male	Died	2
45-49	Female	Discharged	39
45-49	Female	On-going care	12
45-49	Female	Died	1
50-54	Male	Discharged	63
50-54	Male	On-going care	13
50-54	Male	Died	4
50-54	Female	Discharged	52
50-54	Female	On-going care	16
50-54	Female	Died	2

age.factor	sex	status	n
50-54	Not specified	On-going care	1
55-59	Male	Discharged	69
55-59	Male	On-going care	23
55-59	Male	Died	1
55-59	Female	Discharged	40
55-59	Female	On-going care	14
55-59	Female	Died	4
55-59	Not specified	On-going care	1
60-64	Male	Discharged	56
60-64	Male	On-going care	33
60-64	Male	Died	5
60-64	Female	Discharged	49
60-64	Female	On-going care	21
60-64	Female	Died	4
65-69	Male	Discharged	75
65-69	Male	On-going care	40
65-69	Male	Died	7
65-69	Female	Discharged	42
65-69	Female	On-going care	25
65-69	Female	Died	3
65-69	Not specified	Discharged	1
65-69	Not specified	On-going care	2
70-74	Male	Discharged	88
70-74	Male	On-going care	53
70-74	Male	Died	16
70-74	Female	Discharged	69
70-74	Female	On-going care	36
70-74	Female	Died	7
70-74	Not specified	On-going care	2
75-79	Male	Discharged	107
75-79	Male	On-going care	61
75-79	Male	Died	19

age.factor	sex	status	n
75-79	Female	Discharged	67
75-79	Female	On-going care	50
75-79	Female	Died	7
75-79	Not specified	On-going care	2
80-84	Male	Discharged	81
80-84	Male	On-going care	52
80-84	Male	Died	21
80-84	Female	Discharged	73
80-84	Female	On-going care	45
80-84	Female	Died	11
80-84	Not specified	On-going care	2
85-89	Male	Discharged	84
85-89	Male	On-going care	68
85-89	Male	Died	21
85-89	Female	Discharged	67
85-89	Female	On-going care	48
85-89	Female	Died	24
85-89	NA	On-going care	1
90+	Male	Discharged	37
90+	Male	On-going care	44
90+	Male	Died	12
90+	Female	Discharged	66
90+	Female	On-going care	52
90+	Female	Died	15
90+	Not specified	Discharged	1
90+	Not specified	On-going care	3

Table for figure 4A

day	status	n
-1	Discharged	1
1	Discharged	3573
1	Ward	10187

day	status	n
1	Ward (O2)	2765
1	HDU/ICU	239
1	HDU/ICU (O2)	50
1	HDU/ICU (noninvasive)	246
1	ICU (ventilated)	96
1	Died	297
2	Discharged	5300
2	Ward	6584
2	Ward (O2)	2125
2	HDU/ICU	140
2	HDU/ICU (O2)	36
2	HDU/ICU (noninvasive)	179
2	ICU (ventilated)	58
2	Died	352
3	Discharged	6151
3	Ward	5517
3	Ward (O2)	1930
3	HDU/ICU	130
3	HDU/ICU (O2)	36
3	HDU/ICU (noninvasive)	179
3	ICU (ventilated)	57
3	Died	383
4	Discharged	7075
4	Ward	4732
4	Ward (O2)	1734
4	HDU/ICU	121
4	HDU/ICU (O2)	34
4	HDU/ICU (noninvasive)	172
4	ICU (ventilated)	55
4	Died	451
5	Discharged	7855
5	Ward	4150

day	status	n
5	Ward (O2)	1493
5	HDU/ICU	108
5	HDU/ICU (O2)	30
5	HDU/ICU (noninvasive)	168
5	ICU (ventilated)	53
5	Died	512
6	Discharged	8477
6	Ward	3681
6	Ward (O2)	1312
6	HDU/ICU	94
6	HDU/ICU (O2)	29
6	HDU/ICU (noninvasive)	154
6	ICU (ventilated)	47
6	Died	573
7	Discharged	9046
7	Ward	3253
7	Ward (O2)	1132
7	HDU/ICU	85
7	HDU/ICU (O2)	28
7	HDU/ICU (noninvasive)	145
7	ICU (ventilated)	43
7	Died	633
8	Discharged	9486
8	Ward	2918
8	Ward (O2)	984
8	HDU/ICU	80
8	HDU/ICU (O2)	27
8	HDU/ICU (noninvasive)	136
8	ICU (ventilated)	38
8	Died	694
9	Discharged	9901
9	Ward	2598

day	status	n
9	Ward (O2)	860
9	HDU/ICU	72
9	HDU/ICU (O2)	26
9	HDU/ICU (noninvasive)	114
9	ICU (ventilated)	37
9	Died	752
10	Discharged	10219
10	Ward	2342
10	Ward (O2)	765
10	HDU/ICU	66
10	HDU/ICU (O2)	22
10	HDU/ICU (noninvasive)	99
10	ICU (ventilated)	34
10	Died	810

Table for figure 4B

day	status	n
1	Discharged	863
1	Ward	2141
1	Ward (O2)	404
1	HDU/ICU	42
1	HDU/ICU (O2)	9
1	HDU/ICU (noninvasive)	18
1	ICU (ventilated)	21
1	Died	69
2	Discharged	1326
2	Ward	1063
2	Ward (O2)	213
2	HDU/ICU	16
2	HDU/ICU (O2)	4
2	HDU/ICU (noninvasive)	8
2	ICU (ventilated)	7

day	status	n
2	Died	80
3	Discharged	1496
3	Ward	805
3	Ward (O2)	173
3	HDU/ICU	15
3	HDU/ICU (O2)	3
3	HDU/ICU (noninvasive)	8
3	ICU (ventilated)	7
3	Died	84
4	Discharged	1688
4	Ward	631
4	Ward (O2)	146
4	HDU/ICU	11
4	HDU/ICU (O2)	2
4	HDU/ICU (noninvasive)	6
4	ICU (ventilated)	7
4	Died	97
5	Discharged	1825
5	Ward	514
5	Ward (O2)	113
5	HDU/ICU	10
5	HDU/ICU (O2)	1
5	HDU/ICU (noninvasive)	6
5	ICU (ventilated)	7
5	Died	110
6	Discharged	1923
6	Ward	435
6	Ward (O2)	91
6	HDU/ICU	6
6	HDU/ICU (O2)	1
6	HDU/ICU (noninvasive)	4
6	ICU (ventilated)	6

day	status	n
6	Died	120
7	Discharged	2017
7	Ward	355
7	Ward (O2)	75
7	HDU/ICU	4
7	HDU/ICU (O2)	1
7	HDU/ICU (noninvasive)	4
7	ICU (ventilated)	5
7	Died	125
8	Discharged	2107
8	Ward	269
8	Ward (O2)	60
8	HDU/ICU	4
8	HDU/ICU (O2)	1
8	HDU/ICU (noninvasive)	4
8	ICU (ventilated)	4
8	Died	137
9	Discharged	2166
9	Ward	214
9	Ward (O2)	49
9	HDU/ICU	3
9	HDU/ICU (O2)	1
9	HDU/ICU (noninvasive)	4
9	ICU (ventilated)	4
9	Died	145
10	Discharged	2210
10	Ward	165
10	Ward (O2)	43
10	HDU/ICU	3
10	HDU/ICU (O2)	1
10	HDU/ICU (noninvasive)	4
10	ICU (ventilated)	4

day	status	n
10	Died	154