

SPI-M-O

Medium-Term Projections

2nd February 2022

SPI-M-O Medium-Term Projections

- **These projections are not forecasts or predictions. They represent a scenario in which the trajectory of the epidemic continues to follow the trends that were seen in the data available to 31st January.** The delay between infection, developing symptoms, the need for hospital care, and death means they cannot fully reflect the impact of policy and behavioural changes made in the two to three weeks prior to 31st January. An assumed effect of schools opening and closing has been included.
- These projections do not include the potential effects of the BA.2 sub-lineage of Omicron. The delay between infection, developing symptoms, the need for hospital care, and death means **it is unlikely that BA.2 will significantly alter the trajectories of hospitalisations and deaths in the timescales covered by these projections.**
- **The projections do not include the effects of any future policy or behavioural changes, such as the recent announcements to ease restrictions in England, Scotland, Wales and Northern Ireland.**
- **The projections include the impact of vaccines given over the next four weeks.** It will take time for the continued rollout of doses to impact the epidemic, given lags between vaccination and protection, and between infection and hospital admission.
- Modelling groups have used their expert judgement and evidence from the [UK Health Security Agency](#) and other published efficacy studies when making assumptions about vaccine effectiveness. A table summarising these assumptions is available in the annex.
- Not all modelling groups produce projections for both hospitalisations and deaths, so there will be some differences between the models included in the combined projections for each metric.

Metrics:

- **New hospitalisations per day:** Number of individuals admitted with COVID-19 and inpatients newly diagnosed with COVID-19. Data definitions differ slightly across all four nations.
- **New deaths per day (by date of death):** The number of COVID-19 deaths within 28 days of a positive test. Data definitions differ slightly across all four nations.

Modelled projections based on trends to 31st January 2022

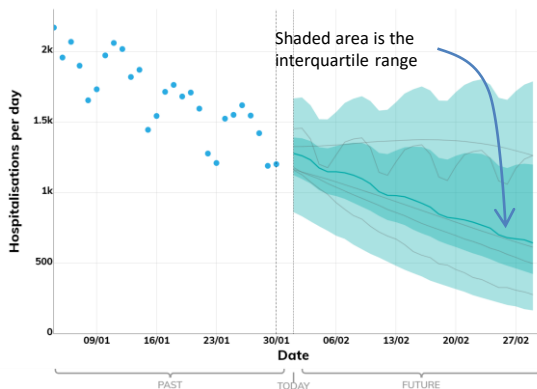
New hospital admissions per day

These projections are based on current trends and will not fully reflect the impact of policy or behavioural changes over the past two to three weeks. These are not forecasts or predictions.

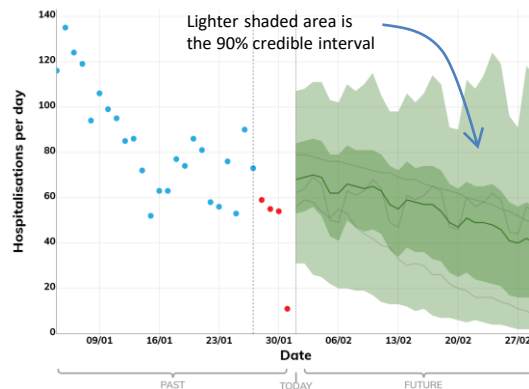
Key

- Real data
- Expected to Increase
- Projection Midpoint
- High and low estimates 5th to 95th percentile
- High and low estimates 25th to 75th percentile
- Models

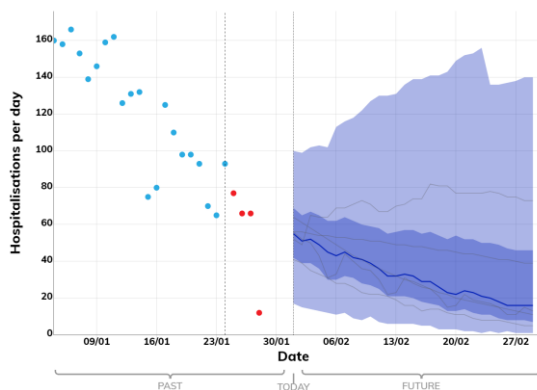
ENGLAND



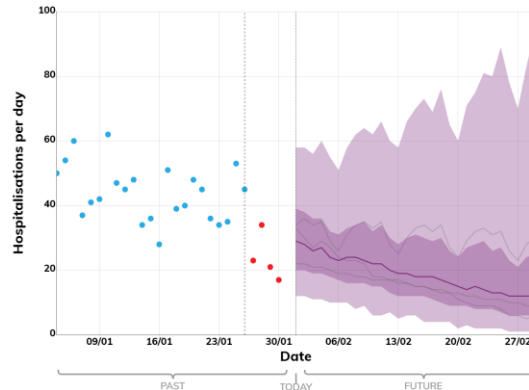
WALES



SCOTLAND



NORTHERN IRELAND



The fan charts show the **90% credible interval and interquartile range** of the combined projections based on current trends.

These projections do not include the potential effects of the BA.2 sub-lineage of Omicron. The delay between infection, developing symptoms, the need for hospital care, and death means it is unlikely that BA.2 will significantly alter the trajectories of hospitalisations and deaths in the timescales covered by these projections.

The delay between infection, developing symptoms, the need for hospital care, and death means they cannot fully reflect the impact of policy or behavioural changes in the two to three weeks prior to 31st January. **The projections do not include the effects of any future policy or behavioural changes, such as recent announcements to ease restrictions in England, Scotland, Wales and Northern Ireland.**

These projections include the potential impact of vaccines to be given over the next four weeks. It will take time for the continued rollout of doses to impact the epidemic, given lags between vaccination and protection, and between infection and hospital admission.

Data notes:

England: Number of patients admitted with confirmed COVID-19 and the number of inpatients diagnosed with COVID-19 in the past 24 hours. Taken from NHS England COVID-19 situation reports.

Wales: Number of patients admitted with confirmed COVID-19 and inpatients diagnosed with COVID-19. Provided by Public Health Wales.

Scotland: Number of patients who tested positive for COVID-19 in the 14 days prior to admission, on the day of admission, or during their stay in hospital. Readmissions within 14 days of a positive test are excluded. Provided by Public Health Scotland.

Northern Ireland: Number of patients admitted with confirmed COVID-19 and inpatients diagnosed with COVID-19. Provided by Health and Social Care Northern Ireland.

Modelled projections based on trends to 31st January 2022

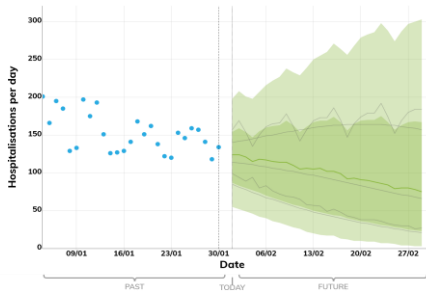
New hospital admissions per day

These projections are based on current trends and will not fully reflect the impact of policy or behavioural changes over the past two to three weeks. These are not forecasts or predictions.

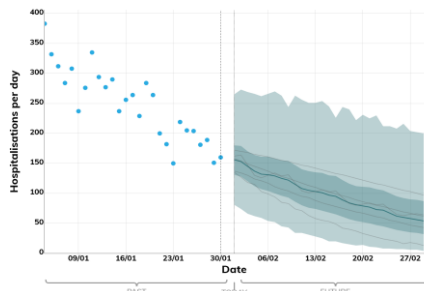
Key

- Real data
- Expected to Increase
- Projection Midpoint
- High and low estimates 5th to 95th percentile
- High and low estimates 25th to 75th percentile
- Models

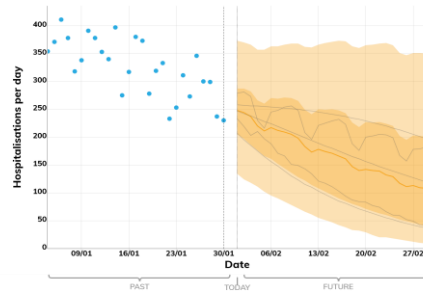
EAST OF ENGLAND



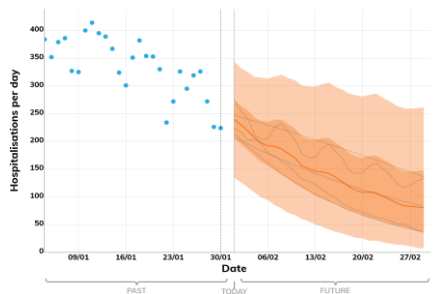
LONDON



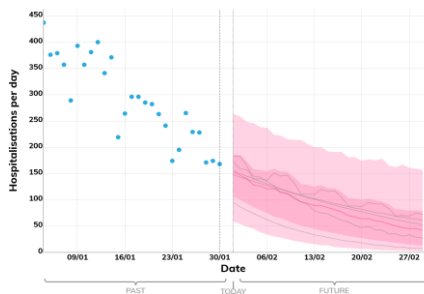
MIDLANDS



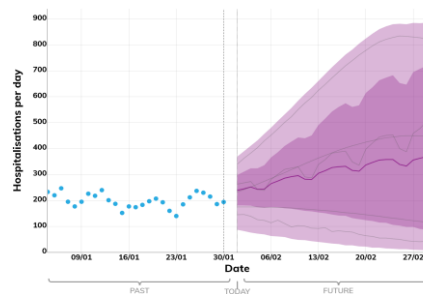
NORTH EAST AND YORKSHIRE



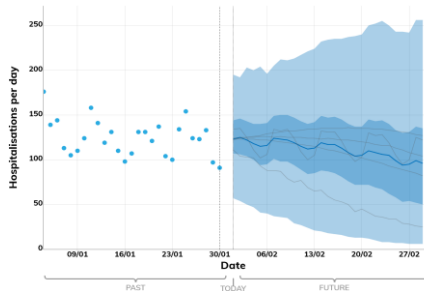
NORTH WEST



SOUTH EAST



SOUTH WEST



The fan charts show the **90% credible interval and interquartile range** of the combined projections based on current trends.

These projections do not include the potential effects of the BA.2 sub-lineage of Omicron. The delay between infection, developing symptoms, the need for hospital care, and death means it is unlikely that BA.2 will significantly alter the trajectories of hospitalisations and deaths in the timescales covered by these projections.

The delay between infection, developing symptoms, the need for hospital care, and death means they cannot fully reflect the impact of policy or behavioural changes in the two to three weeks prior to 31st January. **The projections do not include the effects of any future policy or behavioural changes, such as recent announcements to ease restrictions in England, Scotland, Wales and Northern Ireland.**

These projections include the potential impact of vaccines to be given over the next four weeks. It will take time for the continued rollout of doses to impact the epidemic, given lags between vaccination and protection, and between infection and hospital admission.

Data notes:

England: Number of patients admitted with confirmed COVID-19 and the number of inpatients diagnosed with COVID-19 in the past 24 hours. The past data is taken from the NHS England COVID-19 situation reports.

Modelled projections based on trends to 31st January 2022

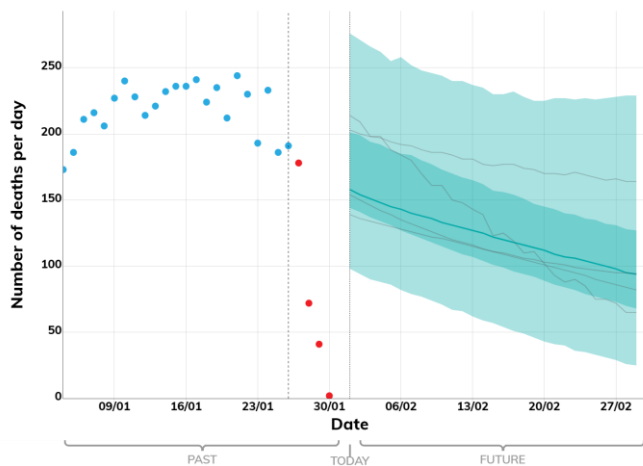
New deaths per day

These projections are based on current trends and will not fully reflect the impact of policy or behavioural changes over the past two to three weeks. These are not forecasts or predictions.

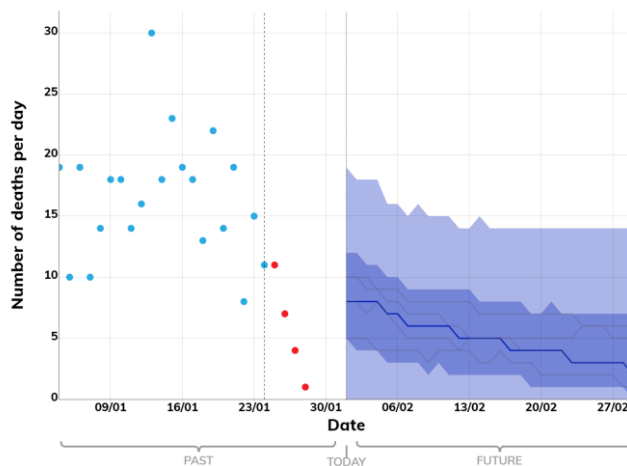
Key

- Real data
- Expected to Increase
- Projection Midpoint
- High and low estimates 5th to 95th percentile
- High and low estimates 25th to 75th percentile
- Models

ENGLAND



SCOTLAND



The fan charts show the **90% credible interval and interquartile range** of the combined projections based on current trends.

These projections do not include the potential effects of the BA.2 sub-lineage of Omicron. The delay between infection, developing symptoms, the need for hospital care, and death means it is unlikely that BA.2 will significantly alter the trajectories of hospitalisations and deaths in the timescales covered by these projections.

The delay between infection, developing symptoms, the need for hospital care, and death means they cannot fully reflect the impact of policy or behavioural changes in the two to three weeks prior to 31st January. **The projections do not include the effects of any future policy or behavioural changes, such as recent announcements to ease restrictions in England, Scotland, Wales and Northern Ireland.**

Due to an insufficient number of models being available, SPI-M-O has been unable to produce consensus projections for the number of deaths in Wales and Northern Ireland this week.

These projections include the potential impact of vaccines to be given over the next four weeks. It will take time for the continued rollout of doses to impact the epidemic, given lags between vaccination and protection, and between infection and hospital admission.

Data Notes:

The number of COVID-19 deaths (by date of death) within 28 days of a positive test. The past data for England is taken from the PHE line list of deaths. The past data for Scotland, Wales, and Northern Ireland is taken from the Coronavirus (COVID-19) in the UK dashboard on Gov.uk.

Modelled projections based on trends to 31st January 2022

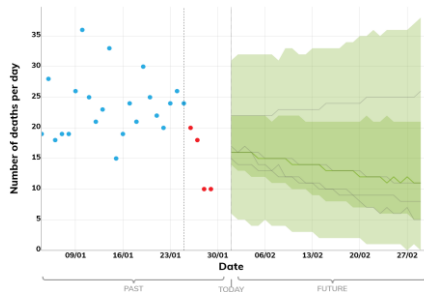
New deaths per day

These projections are based on current trends and will not fully reflect the impact of policy or behavioural changes over the past two to three weeks. These are not forecasts or predictions.

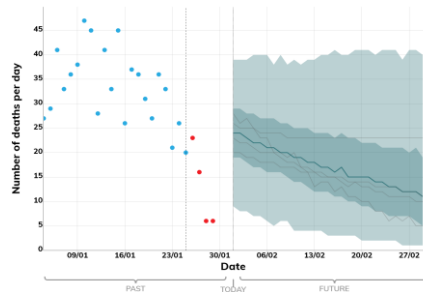
Key

- ● Real data
- ● Expected to Increase
- Projection Midpoint
- High and low estimates 5th to 95th percentile
- High and low estimates 25th to 75th percentile
- Models

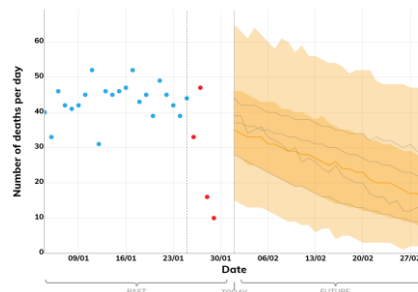
EAST OF ENGLAND



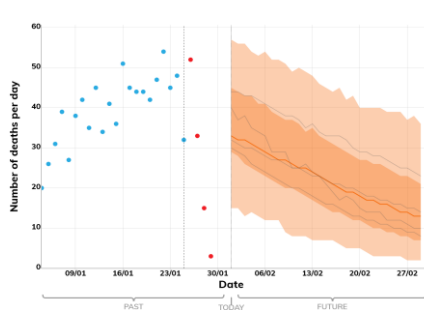
LONDON



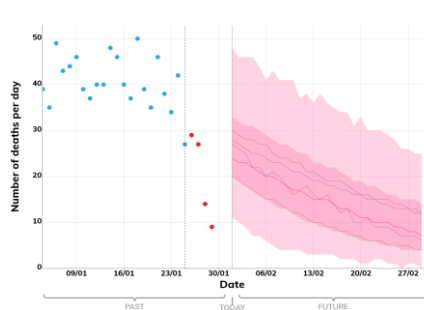
MIDLANDS



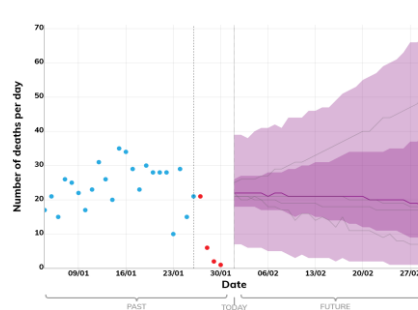
NORTH EAST AND YORKSHIRE



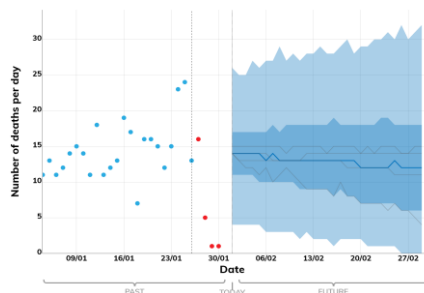
NORTH WEST



SOUTH EAST



SOUTH WEST



The fan charts show the **90% credible interval and interquartile range** of the combined projections based on current trends.

These projections do not include the potential effects of the BA.2 sub-lineage of Omicron. The delay between infection, developing symptoms, the need for hospital care, and death means it is unlikely that BA.2 will significantly alter the trajectories of hospitalisations and deaths in the timescales covered by these projections.

The delay between infection, developing symptoms, the need for hospital care, and death means they cannot fully reflect the impact of policy or behavioural changes in the two to three weeks prior to 31st January. **The projections do not include the effects of any future policy or behavioural changes, such as recent announcements to ease restrictions in England, Scotland, Wales and Northern Ireland.**

These projections include the potential impact of vaccines to be given over the next four weeks. It will take time for the continued rollout of doses to impact the epidemic, given lags between vaccination and protection, and between infection and hospital admission.

Data Notes:

The number of COVID-19 deaths (by date of death) within 28 days of a positive test. The past data for England is taken from the PHE line list of deaths.

Annex: SPI-M-O Vaccine Effectiveness Assumptions

The LSHTM EpiNow model and Edinburgh WSS model have also been included in the combined projections. The LSHTM model projects forward based on the recent trends in the data and doesn't explicitly include the impact of vaccination. However, the protection provided by vaccinations given to date will be reflected in the data and therefore implicitly included in the projections produced by the model. The Edinburgh model doesn't include any fixed assumptions regarding vaccine efficacy. Instead, the model fits to data from October 2020 to describe the effectiveness of vaccinations at reducing the risk of hospitalisation and death only. These vaccine efficacy estimates are then used when projecting forwards in time.

		Pfizer BioNTech			Oxford-AstraZeneca		Moderna		
		1 Dose	2 Doses	Booster [5]	1 Dose	2 Doses	1 Dose	2 Doses	Booster [5]
Reduction in risk of infection [1]	Manchester [2,3]	75%	75%	75%	75%	75%	75%	75%	75%
	Warwick [2]	10%	53%	60%	5%	25%	10%	53%	60%
	PHE/Cambridge [2]	31%	80%	80%	31%	80%	31%	80%	80%
	Scottish Government [2]	36%	47%	-	26%	45%	47%	50%	-
Reduction in risk of onward transmission, in addition to reduction from lower infection risk [1]	Manchester [2,3,4]	-	-	-	-	-	-	-	-
	Warwick [2]	-	30%	30%	-	30%	-	30%	30%
	PHE/Cambridge [2,4]	-	-	-	-	-	-	-	-
	Scottish Government [2]	19%	25%	-	24%	29%	17%	21%	-
Reduction in risk of hospitalisation [1]	Manchester [2,3]	75%	75%	75%	75%	75%	75%	75%	75%
	Warwick [2]	40%	85%	95%	40%	75%	40%	85%	95%
	PHE/Cambridge [2]	78%	97%	97%	78%	97%	78%	97%	97%
	Scottish Government [2]	72%	88%	-	72%	88%	60%	74%	-
Reduction in risk of death [1]	Manchester [2,3]	75%	75%	75%	75%	75%	75%	75%	75%
	Warwick [2]	40%	92%	95%	40%	92%	40%	92%	95%
	PHE/Cambridge [2]	78%	97%	97%	78%	97%	78%	97%	97%
	Scottish Government [2]	72%	88%	-	72%	88%	60%	74%	-

[1] The assumed delay between vaccination and protection varies between 10 and 21 days for dose 1 and between 7 and 21 days for subsequent doses across the modelling groups.

[2] Warwick uses a multi-stage model to capture the waning vaccine effectiveness against infection, hospital admission and death, for different variants of concern. The Manchester, PHE/Cambridge and Scottish Government models do not currently include any assumptions for waning of immunity.

[3] Manchester's model does not split vaccine effectiveness by vaccine type or different doses.

[4] The Manchester and PHE/ Cambridge models do not include a reduction in the risk of onwards transmission after receiving either vaccine.

[5] It is assumed that the booster doses administered will be either the Pfizer BioNTech or Moderna vaccines, as per advice from [JCVI](#).