

Dynamic CO-CIN report to SAGE and NERVTAG

Executive summary

Includes patients admitted on or after 01 December 2021

There are 15512 patients included in CO-CIN. Of these, 1033 patient(s) have died and 1661 required ICU. 9102 have been discharged home.

Admission

Figure 1

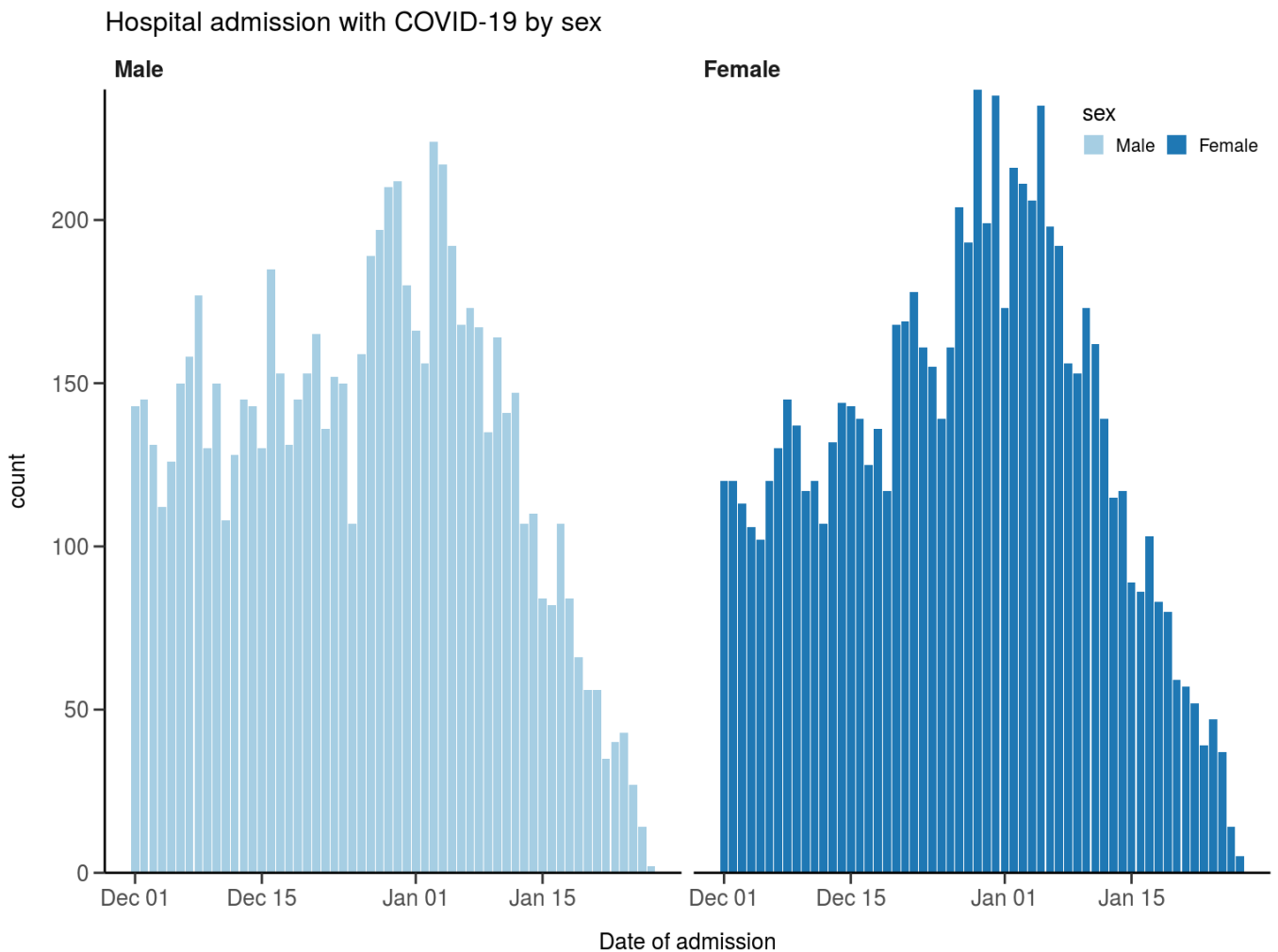
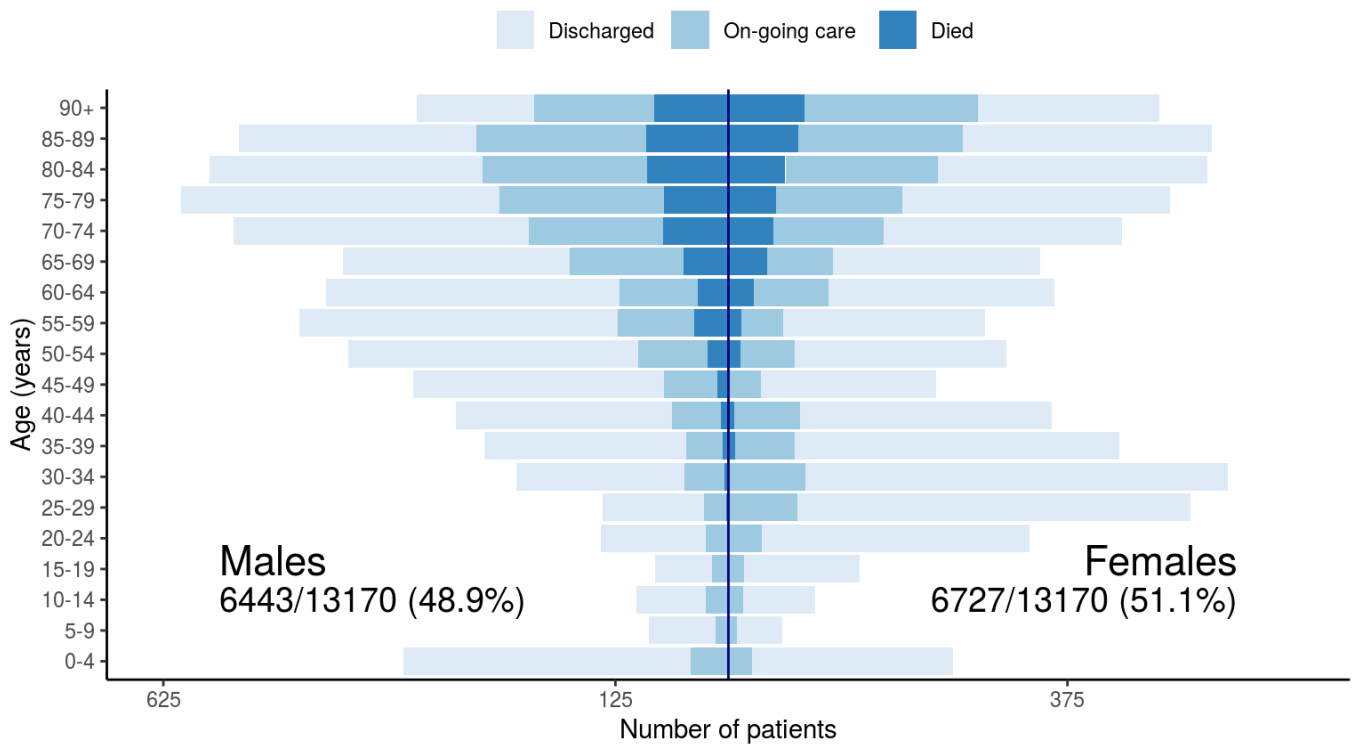


Figure 2

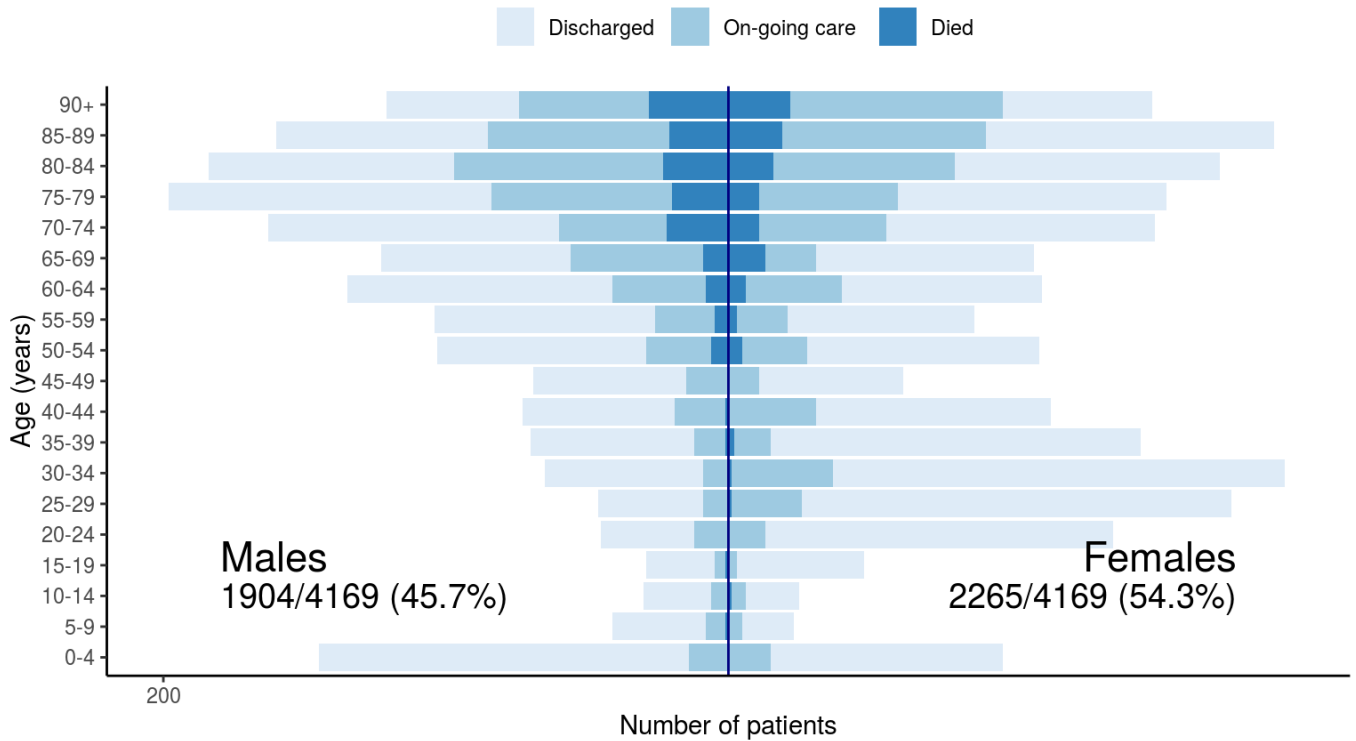
Patients with outcome stratified by age, and sex

All



Patients with outcome stratified by age, and sex

Admitted ≥ 14 days and ≤ 28 days ago

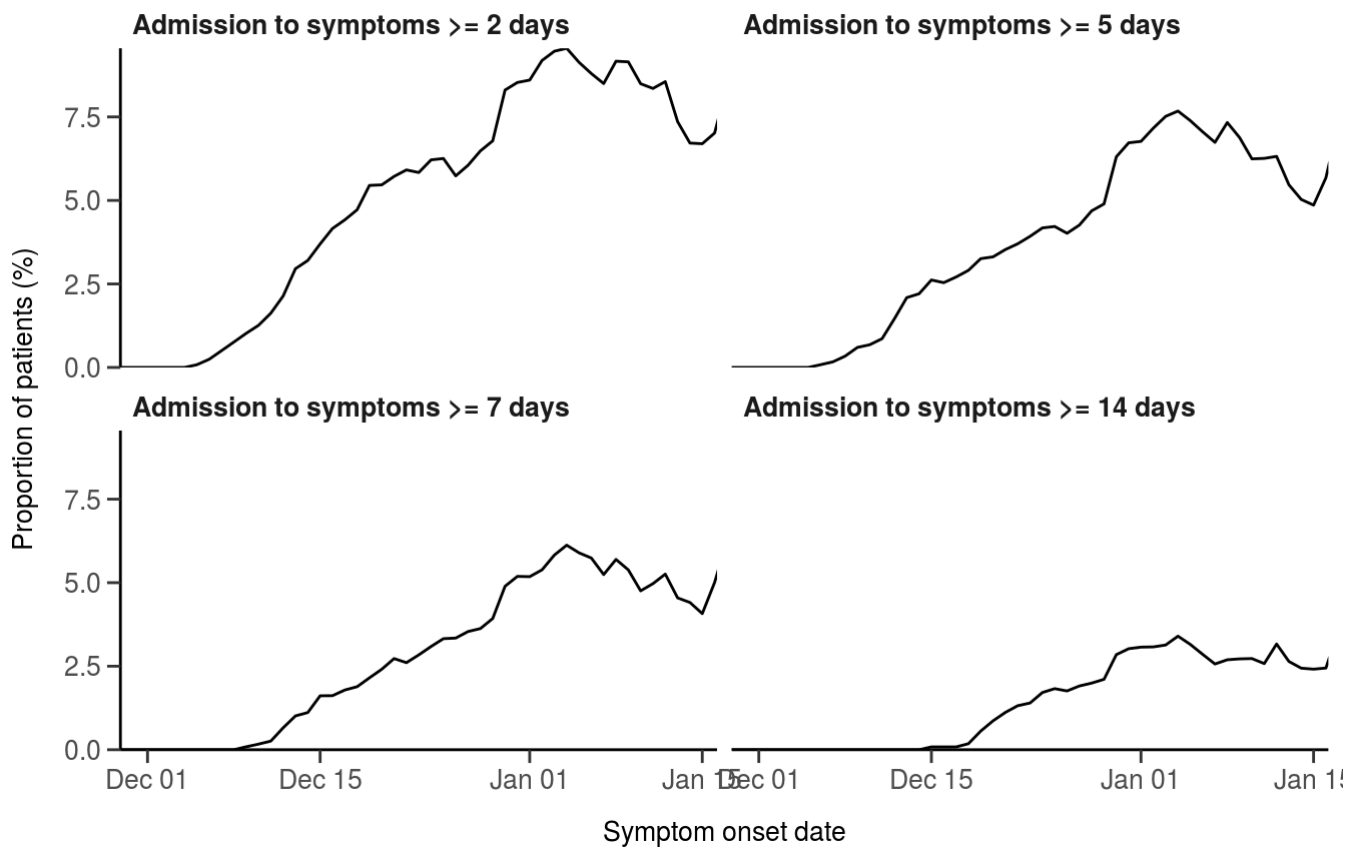


Nosocomial

Figure 3

Proportion with symptom onset occurring after hospital admission

7-day rolling percentage. n = 9477



Patient flow

Figure 4A - All patients

N = 13908

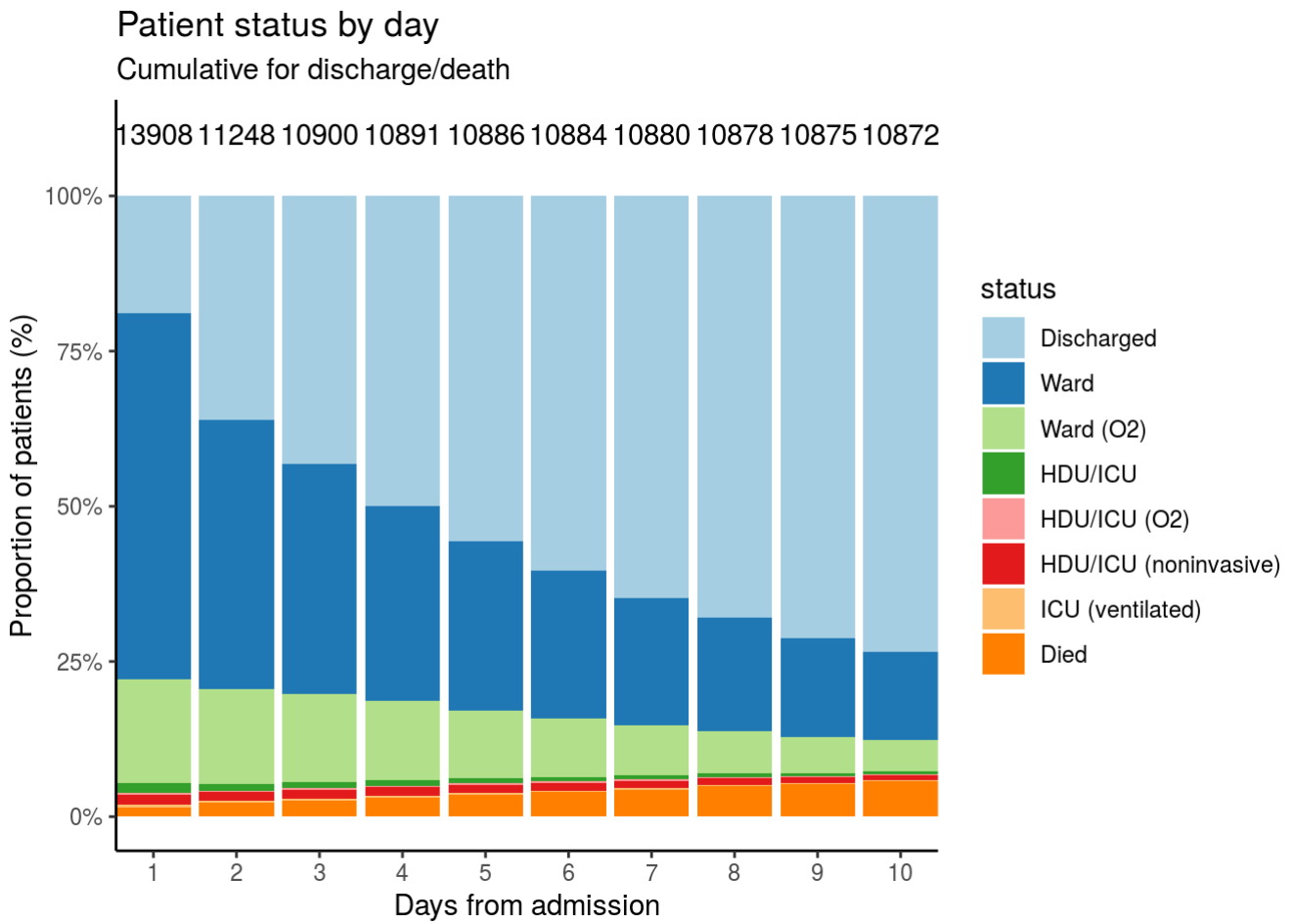
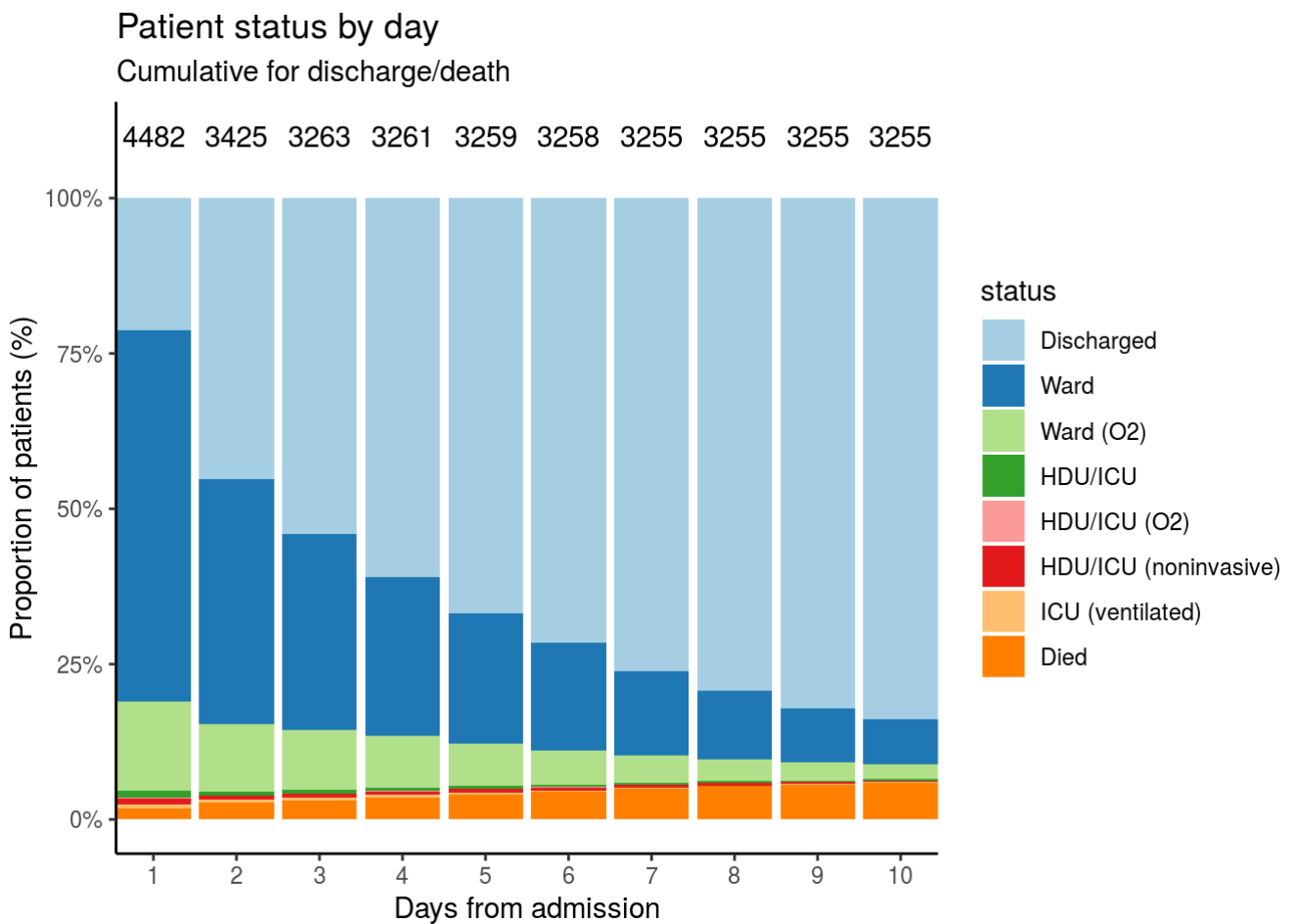


Figure 4B - Patients admitted ≥ 14 days and ≤ 28 days ago

N = 4482



Oxygen requirement

Figure 5A - All patients

N = 11739

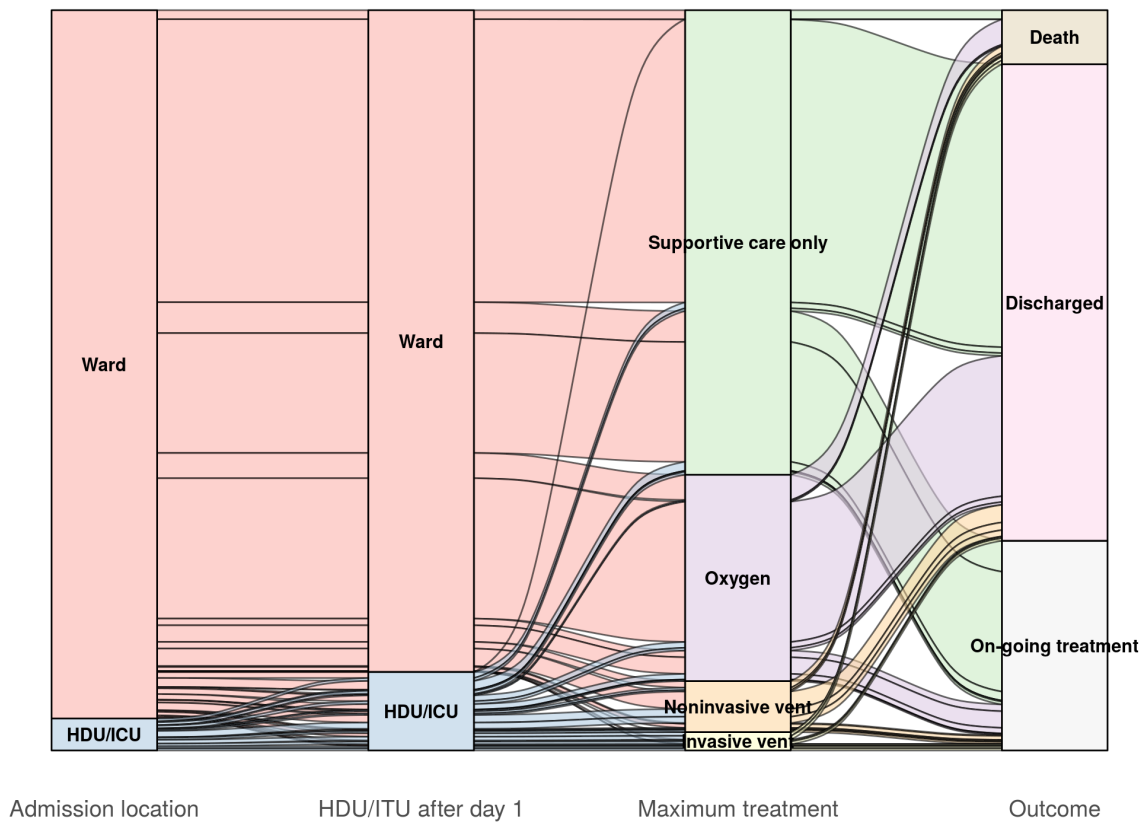
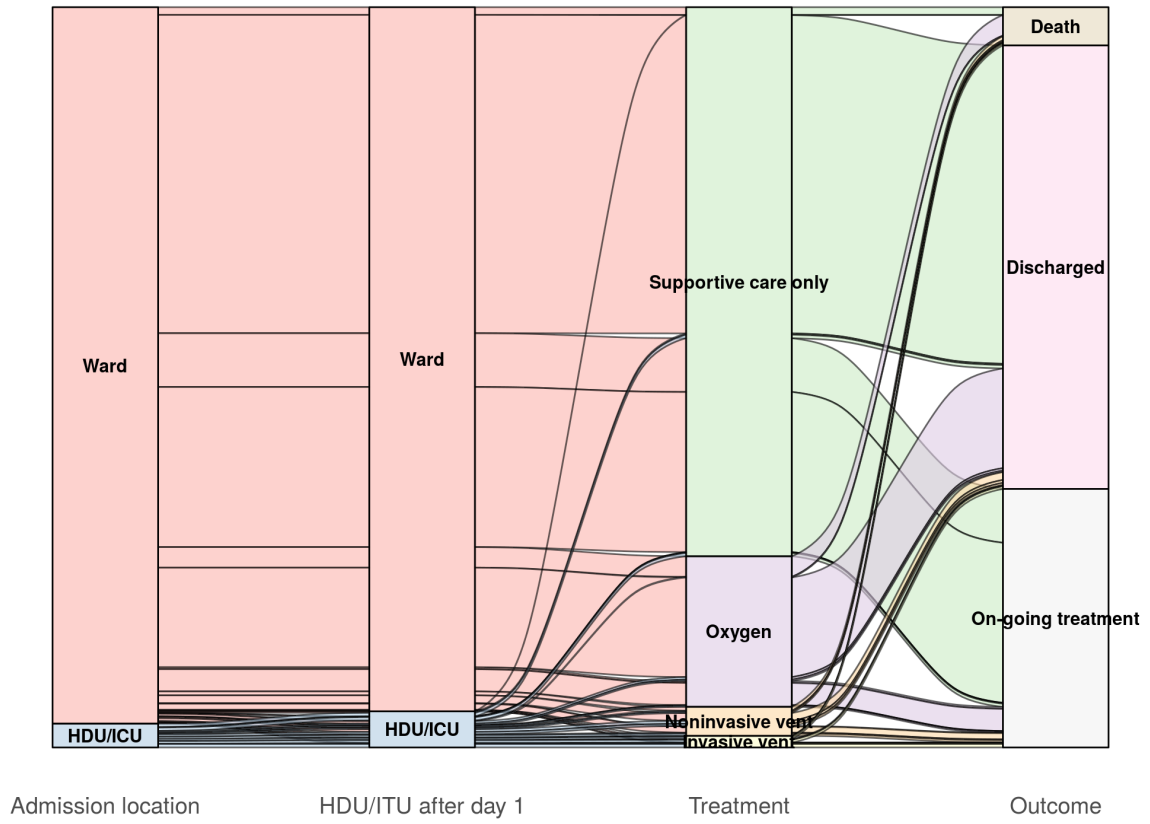


Figure 5B - Patients admitted ≥ 14 days and ≤ 28 days ago

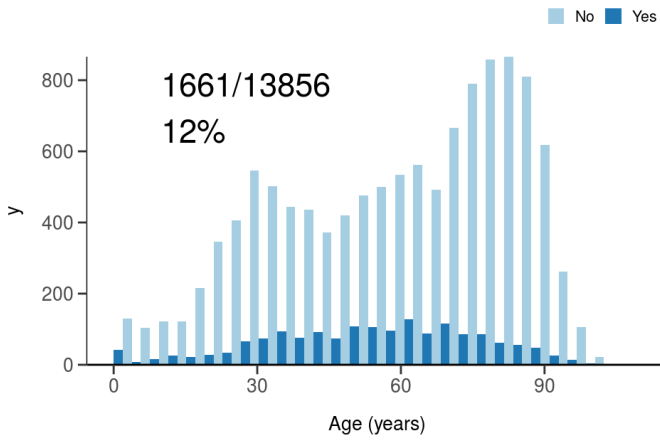
N = 3651



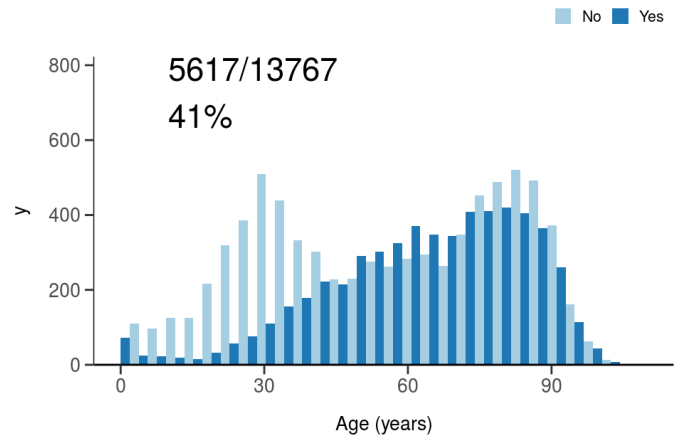
Treatment

Figure 6

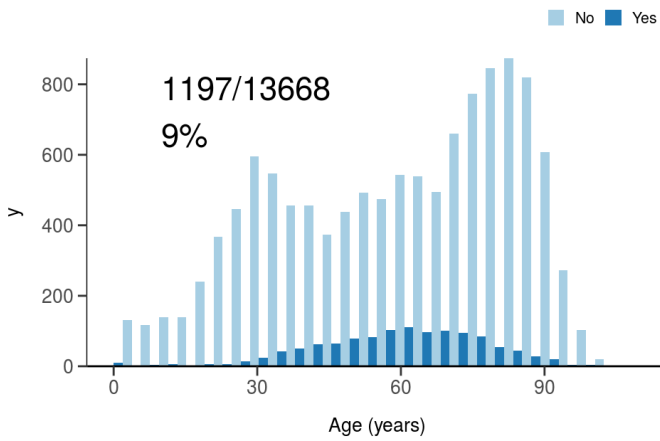
ICU/HDU admission
Figure 10A



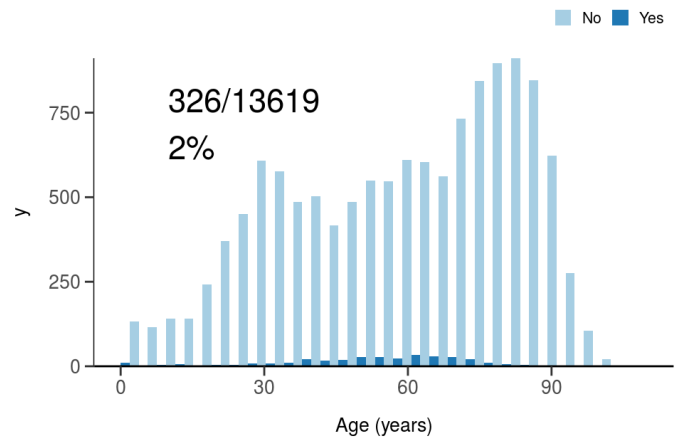
High flow oxygen
Figure 10B



Noninvasive ventilation
Figure 10C



Invasive ventilation
Figure 10D



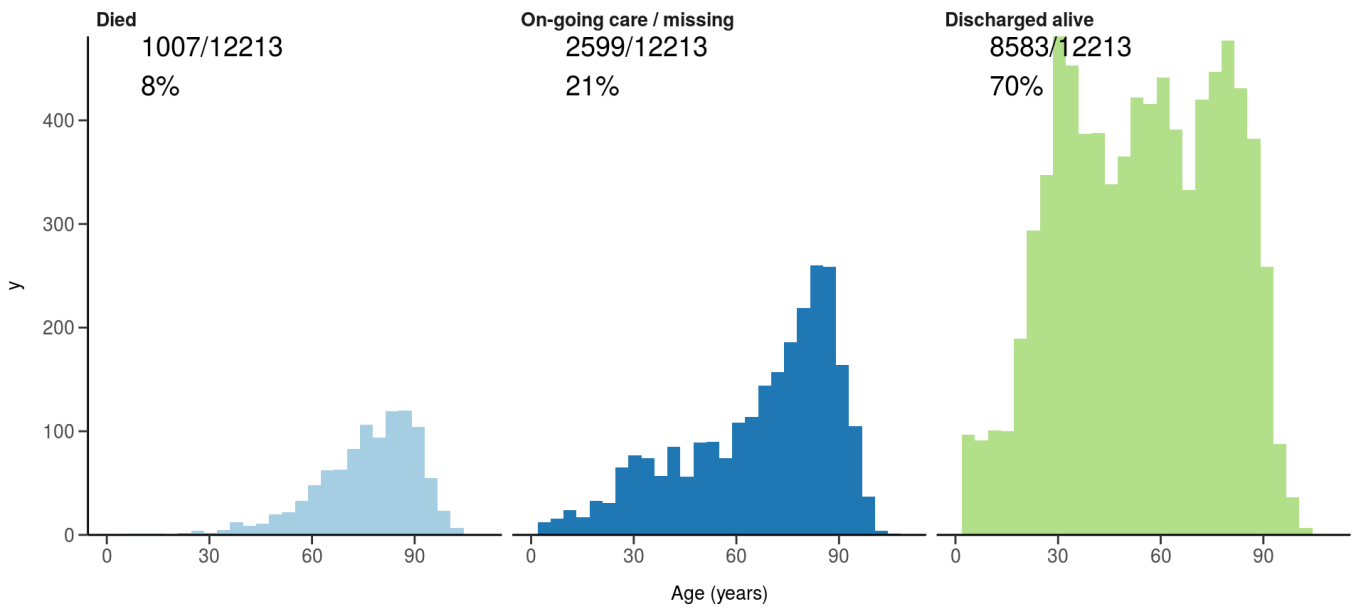
Status in patients admitted ≥ 14 days from today

Figure 7

Where outcome is not reported, on-going care is assumed.

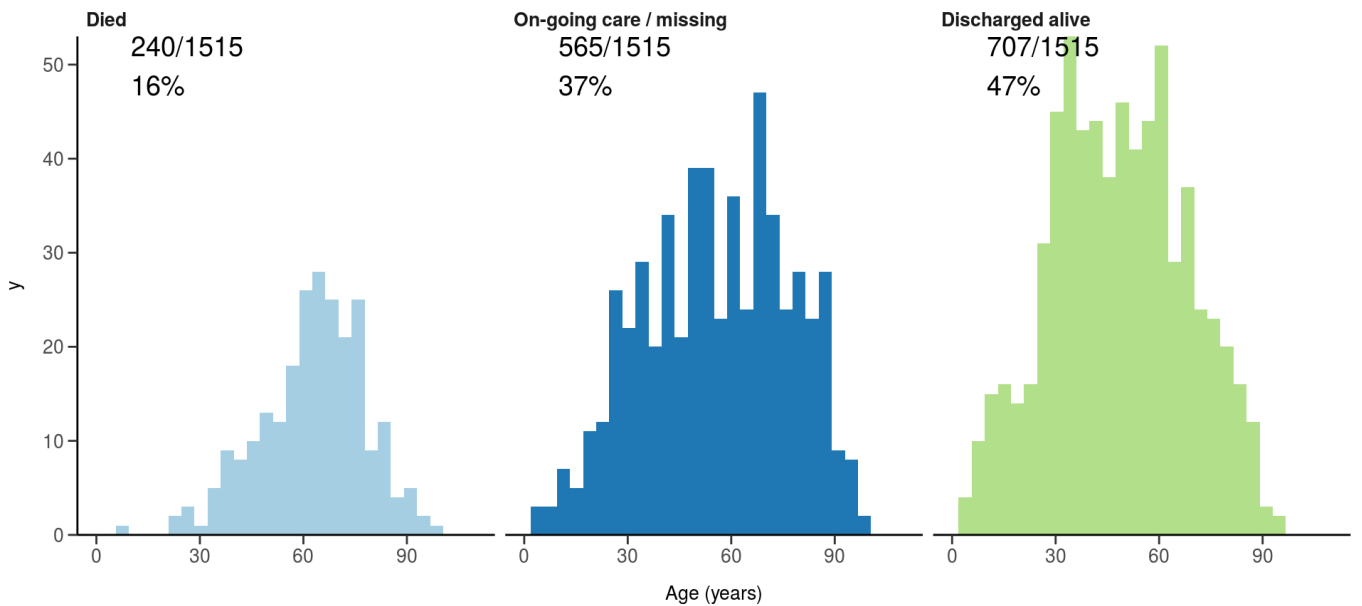
All: status in patients admitted ≥ 14 days ago

Figure 11A



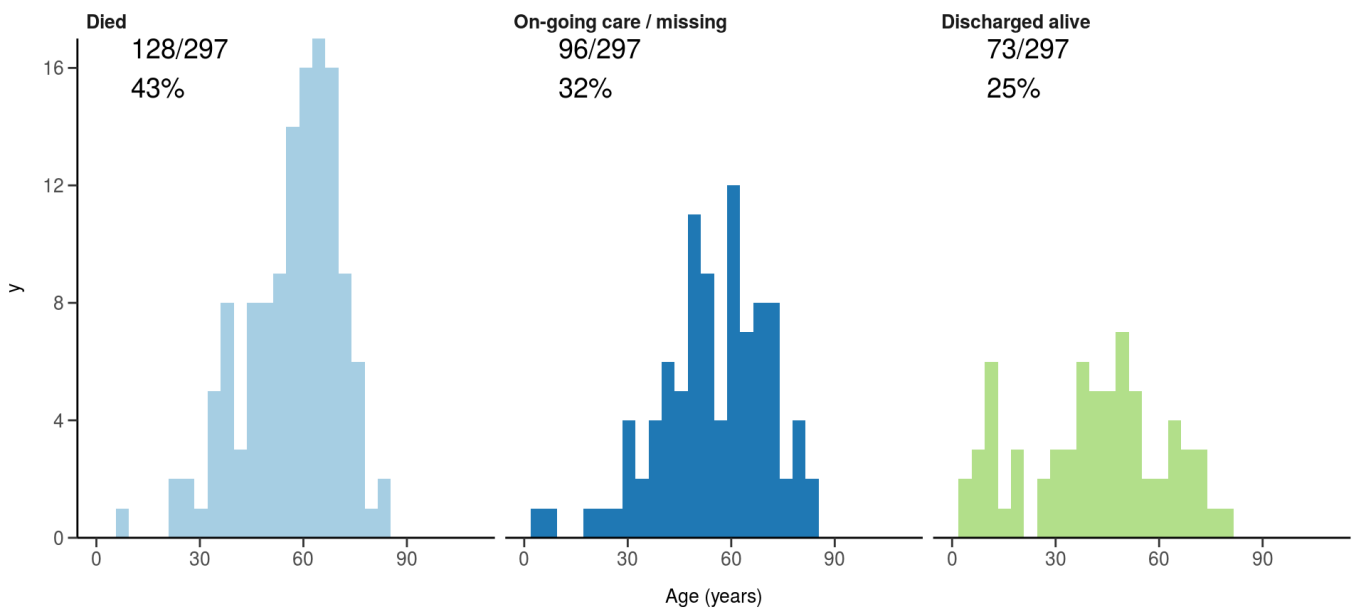
ICU/HDU admissions: status in patients admitted ≥ 14 days ago

Figure 11B



Invasive ventilation: status in patients admitted ≥ 14 days ago

Figure 11c

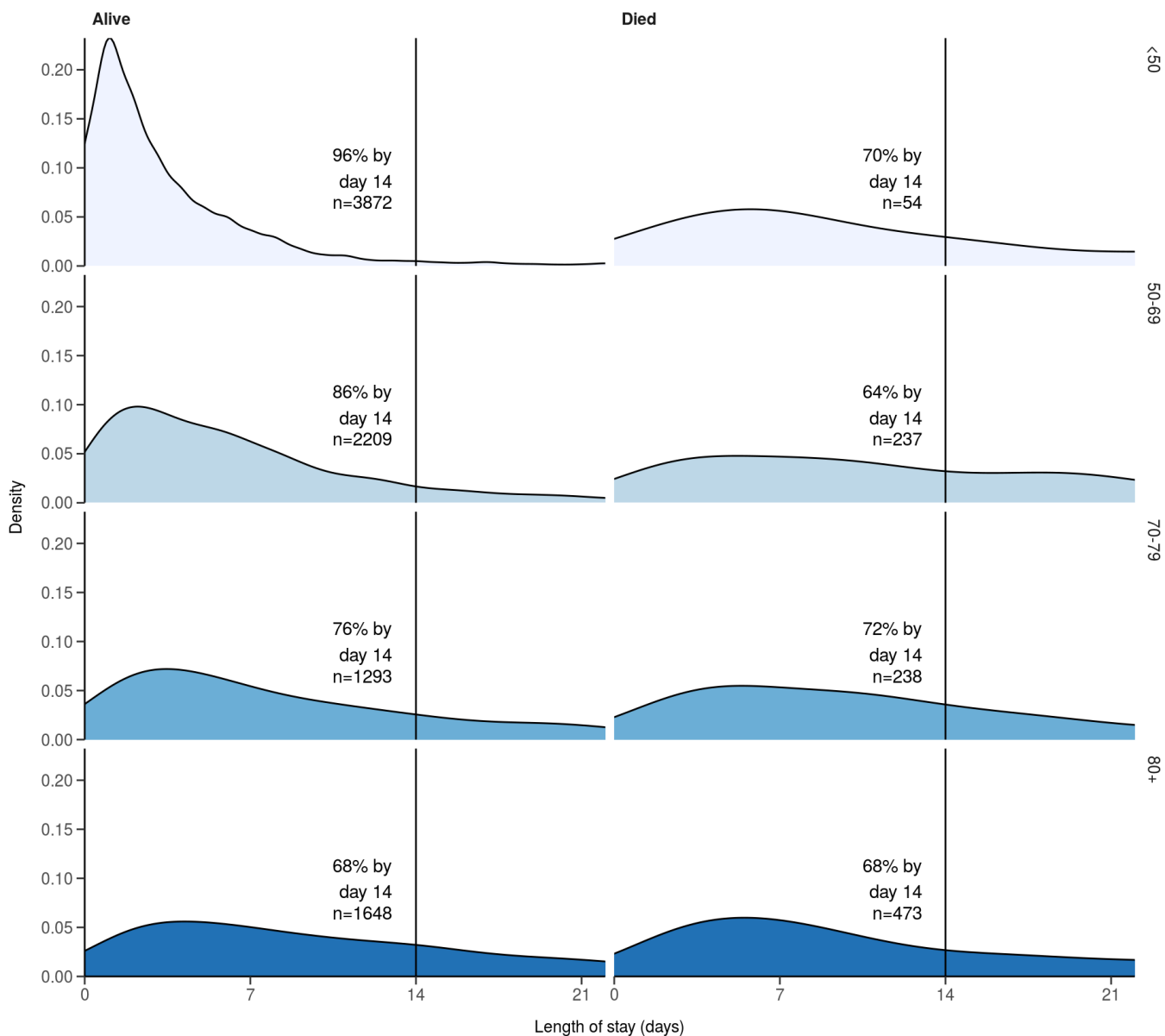


Length of stay stratified by age

####Figure 8

Length of stay stratified by age and mortality
Proportion who reach outcome by day 14 shown

Age (years)
 <50
 50-69
 70-79
 80+



Data

Table for figure 2A

age.factor	sex	status	n
0-4	Male	Discharged	317
0-4	Male	On-going care	42
0-4	Female	Discharged	222
0-4	Female	On-going care	26

age.factor	sex	status	n
0-4	Not specified	Discharged	1
5-9	Male	Discharged	74
5-9	Male	On-going care	13
5-9	Male	Died	1
5-9	Female	Discharged	51
5-9	Female	On-going care	9
10-14	Male	Discharged	77
10-14	Male	On-going care	25
10-14	Female	Discharged	80
10-14	Female	On-going care	15
10-14	Female	Died	1
10-14	NA	Discharged	2
15-19	Male	Discharged	63
15-19	Male	On-going care	17
15-19	Male	Died	1
15-19	Female	Discharged	128
15-19	Female	On-going care	17
15-19	NA	Discharged	1
20-24	Male	Discharged	116
20-24	Male	On-going care	24
20-24	Male	Died	1
20-24	Female	Discharged	296
20-24	Female	On-going care	36
20-24	Female	Died	1
20-24	Not specified	On-going care	1
25-29	Male	Discharged	112
25-29	Male	On-going care	25
25-29	Male	Died	2
25-29	Female	Discharged	435
25-29	Female	On-going care	74
25-29	Female	Died	2
25-29	NA	Discharged	1

age.factor	sex	status	n
30-34	Male	Discharged	186
30-34	Male	On-going care	45
30-34	Male	Died	4
30-34	Female	Discharged	467
30-34	Female	On-going care	83
30-34	Female	Died	2
35-39	Male	Discharged	223
35-39	Male	On-going care	41
35-39	Male	Died	6
35-39	Female	Discharged	359
35-39	Female	On-going care	66
35-39	Female	Died	7
40-44	Male	Discharged	239
40-44	Male	On-going care	54
40-44	Male	Died	8
40-44	Female	Discharged	279
40-44	Female	On-going care	73
40-44	Female	Died	6
40-44	Not specified	On-going care	2
45-49	Male	Discharged	278
45-49	Male	On-going care	59
45-49	Male	Died	12
45-49	Female	Discharged	194
45-49	Female	On-going care	34
45-49	Female	Died	2
45-49	Not specified	On-going care	1
45-49	NA	Discharged	1
50-54	Male	Discharged	320
50-54	Male	On-going care	77
50-54	Male	Died	23
50-54	Female	Discharged	234
50-54	Female	On-going care	60

age.factor	sex	status	n
50-54	Female	Died	13
50-54	Not specified	On-going care	1
55-59	Male	Discharged	353
55-59	Male	On-going care	84
55-59	Male	Died	38
55-59	Female	Discharged	223
55-59	Female	On-going care	47
55-59	Female	Died	14
55-59	Not specified	Discharged	1
55-59	Not specified	On-going care	2
60-64	Male	Discharged	325
60-64	Male	On-going care	86
60-64	Male	Died	34
60-64	Female	Discharged	250
60-64	Female	On-going care	83
60-64	Female	Died	28
60-64	Not specified	On-going care	1
65-69	Male	Discharged	250
65-69	Male	On-going care	126
65-69	Male	Died	50
65-69	Female	Discharged	229
65-69	Female	On-going care	73
65-69	Female	Died	43
65-69	Not specified	On-going care	6
70-74	Male	Discharged	326
70-74	Male	On-going care	149
70-74	Male	Died	72
70-74	Female	Discharged	263
70-74	Female	On-going care	122
70-74	Female	Died	50
70-74	Not specified	On-going care	3
70-74	NA	Discharged	1

age.factor	sex	status	n
75-79	Male	Discharged	352
75-79	Male	On-going care	182
75-79	Male	Died	71
75-79	Female	Discharged	296
75-79	Female	On-going care	139
75-79	Female	Died	53
75-79	Not specified	Discharged	1
75-79	Not specified	On-going care	4
80-84	Male	Discharged	302
80-84	Male	On-going care	182
80-84	Male	Died	90
80-84	Female	Discharged	298
80-84	Female	On-going care	169
80-84	Female	Died	63
80-84	Not specified	Discharged	2
80-84	Not specified	On-going care	5
85-89	Male	Discharged	262
85-89	Male	On-going care	188
85-89	Male	Died	91
85-89	Female	Discharged	276
85-89	Female	On-going care	182
85-89	Female	Died	77
85-89	Not specified	On-going care	1
85-89	NA	On-going care	1
90+	Male	Discharged	130
90+	Male	On-going care	133
90+	Male	Died	82
90+	Female	Discharged	201
90+	Female	On-going care	192
90+	Female	Died	84
90+	Not specified	On-going care	2
90+	NA	Died	1

Table for figure 2B

age.factor	sex	status	n
0-4	Male	Discharged	131
0-4	Male	On-going care	14
0-4	Female	Discharged	82
0-4	Female	On-going care	15
0-4	Not specified	Discharged	1
5-9	Male	Discharged	33
5-9	Male	On-going care	7
5-9	Male	Died	1
5-9	Female	Discharged	18
5-9	Female	On-going care	5
10-14	Male	Discharged	24
10-14	Male	On-going care	6
10-14	Female	Discharged	19
10-14	Female	On-going care	5
10-14	Female	Died	1
15-19	Male	Discharged	24
15-19	Male	On-going care	4
15-19	Male	Died	1
15-19	Female	Discharged	45
15-19	Female	On-going care	3
20-24	Male	Discharged	33
20-24	Male	On-going care	12
20-24	Female	Discharged	123
20-24	Female	On-going care	13
25-29	Male	Discharged	37
25-29	Male	On-going care	9
25-29	Female	Discharged	152
25-29	Female	On-going care	25
25-29	Female	Died	1
25-29	NA	Discharged	1
30-34	Male	Discharged	56

age.factor	sex	status	n
30-34	Male	On-going care	9
30-34	Female	Discharged	160
30-34	Female	On-going care	36
30-34	Female	Died	1
35-39	Male	Discharged	58
35-39	Male	On-going care	11
35-39	Male	Died	1
35-39	Female	Discharged	131
35-39	Female	On-going care	13
35-39	Female	Died	2
40-44	Male	Discharged	54
40-44	Male	On-going care	18
40-44	Male	Died	1
40-44	Female	Discharged	83
40-44	Female	On-going care	31
40-44	Not specified	On-going care	1
45-49	Male	Discharged	54
45-49	Male	On-going care	15
45-49	Female	Discharged	51
45-49	Female	On-going care	11
45-49	Not specified	On-going care	1
50-54	Male	Discharged	74
50-54	Male	On-going care	23
50-54	Male	Died	6
50-54	Female	Discharged	82
50-54	Female	On-going care	23
50-54	Female	Died	5
55-59	Male	Discharged	78
55-59	Male	On-going care	21
55-59	Male	Died	5
55-59	Female	Discharged	66
55-59	Female	On-going care	18

age.factor	sex	status	n
55-59	Female	Died	3
55-59	Not specified	Discharged	1
60-64	Male	Discharged	94
60-64	Male	On-going care	33
60-64	Male	Died	8
60-64	Female	Discharged	71
60-64	Female	On-going care	34
60-64	Female	Died	6
65-69	Male	Discharged	67
65-69	Male	On-going care	47
65-69	Male	Died	9
65-69	Female	Discharged	77
65-69	Female	On-going care	18
65-69	Female	Died	13
65-69	Not specified	On-going care	6
70-74	Male	Discharged	103
70-74	Male	On-going care	38
70-74	Male	Died	22
70-74	Female	Discharged	95
70-74	Female	On-going care	45
70-74	Female	Died	11
70-74	Not specified	On-going care	1
75-79	Male	Discharged	114
75-79	Male	On-going care	64
75-79	Male	Died	20
75-79	Female	Discharged	95
75-79	Female	On-going care	49
75-79	Female	Died	11
80-84	Male	Discharged	87
80-84	Male	On-going care	74
80-84	Male	Died	23
80-84	Female	Discharged	94

age.factor	sex	status	n
80-84	Female	On-going care	64
80-84	Female	Died	16
80-84	Not specified	On-going care	2
85-89	Male	Discharged	75
85-89	Male	On-going care	64
85-89	Male	Died	21
85-89	Female	Discharged	102
85-89	Female	On-going care	72
85-89	Female	Died	19
90+	Male	Discharged	47
90+	Male	On-going care	46
90+	Male	Died	28
90+	Female	Discharged	53
90+	Female	On-going care	75
90+	Female	Died	22
90+	Not specified	On-going care	2

Table for figure 4A

day	status	n
-1	Discharged	1
1	Discharged	2617
1	Ward	8223
1	Ward (O2)	2326
1	HDU/ICU	203
1	HDU/ICU (O2)	41
1	HDU/ICU (noninvasive)	219
1	ICU (ventilated)	74
1	Died	205
2	Discharged	4050
2	Ward	4888
2	Ward (O2)	1725
2	HDU/ICU	112

day	status	n
2	HDU/ICU (O2)	29
2	HDU/ICU (noninvasive)	156
2	ICU (ventilated)	42
2	Died	246
3	Discharged	4704
3	Ward	4038
3	Ward (O2)	1553
3	HDU/ICU	104
3	HDU/ICU (O2)	31
3	HDU/ICU (noninvasive)	154
3	ICU (ventilated)	43
3	Died	273
4	Discharged	5446
4	Ward	3416
4	Ward (O2)	1387
4	HDU/ICU	98
4	HDU/ICU (O2)	30
4	HDU/ICU (noninvasive)	147
4	ICU (ventilated)	40
4	Died	327
5	Discharged	6061
5	Ward	2964
5	Ward (O2)	1191
5	HDU/ICU	85
5	HDU/ICU (O2)	26
5	HDU/ICU (noninvasive)	143
5	ICU (ventilated)	39
5	Died	377
6	Discharged	6564
6	Ward	2594
6	Ward (O2)	1034
6	HDU/ICU	74

day	status	n
6	HDU/ICU (O2)	25
6	HDU/ICU (noninvasive)	133
6	ICU (ventilated)	33
6	Died	427
7	Discharged	7046
7	Ward	2239
7	Ward (O2)	874
7	HDU/ICU	66
7	HDU/ICU (O2)	24
7	HDU/ICU (noninvasive)	124
7	ICU (ventilated)	30
7	Died	477
8	Discharged	7394
8	Ward	1984
8	Ward (O2)	745
8	HDU/ICU	61
8	HDU/ICU (O2)	23
8	HDU/ICU (noninvasive)	115
8	ICU (ventilated)	26
8	Died	530
9	Discharged	7742
9	Ward	1730
9	Ward (O2)	637
9	HDU/ICU	53
9	HDU/ICU (O2)	22
9	HDU/ICU (noninvasive)	95
9	ICU (ventilated)	25
9	Died	571
10	Discharged	7988
10	Ward	1536
10	Ward (O2)	561
10	HDU/ICU	48

day	status	n
10	HDU/ICU (O2)	19
10	HDU/ICU (noninvasive)	81
10	ICU (ventilated)	23
10	Died	616

Table for figure 4B

day	status	n
1	Discharged	956
1	Ward	2675
1	Ward (O2)	645
1	HDU/ICU	47
1	HDU/ICU (O2)	8
1	HDU/ICU (noninvasive)	42
1	ICU (ventilated)	30
1	Died	79
2	Discharged	1550
2	Ward	1347
2	Ward (O2)	376
2	HDU/ICU	20
2	HDU/ICU (O2)	3
2	HDU/ICU (noninvasive)	21
2	ICU (ventilated)	15
2	Died	93
3	Discharged	1762
3	Ward	1030
3	Ward (O2)	317
3	HDU/ICU	18
3	HDU/ICU (O2)	2
3	HDU/ICU (noninvasive)	18
3	ICU (ventilated)	15
3	Died	101
4	Discharged	1990

day	status	n
4	Ward	834
4	Ward (O2)	271
4	HDU/ICU	17
4	HDU/ICU (O2)	2
4	HDU/ICU (noninvasive)	18
4	ICU (ventilated)	14
4	Died	115
5	Discharged	2180
5	Ward	681
5	Ward (O2)	220
5	HDU/ICU	16
5	HDU/ICU (O2)	2
5	HDU/ICU (noninvasive)	18
5	ICU (ventilated)	13
5	Died	129
6	Discharged	2334
6	Ward	562
6	Ward (O2)	182
6	HDU/ICU	11
6	HDU/ICU (O2)	1
6	HDU/ICU (noninvasive)	17
6	ICU (ventilated)	8
6	Died	143
7	Discharged	2479
7	Ward	443
7	Ward (O2)	142
7	HDU/ICU	9
7	HDU/ICU (O2)	1
7	HDU/ICU (noninvasive)	15
7	ICU (ventilated)	7
7	Died	159
8	Discharged	2583

day	status	n
8	Ward	355
8	Ward (O2)	115
8	HDU/ICU	8
8	HDU/ICU (O2)	1
8	HDU/ICU (noninvasive)	15
8	ICU (ventilated)	4
8	Died	174
9	Discharged	2673
9	Ward	285
9	Ward (O2)	93
9	HDU/ICU	7
9	HDU/ICU (O2)	1
9	HDU/ICU (noninvasive)	12
9	ICU (ventilated)	4
9	Died	180
10	Discharged	2732
10	Ward	234
10	Ward (O2)	78
10	HDU/ICU	7
10	HDU/ICU (O2)	1
10	HDU/ICU (noninvasive)	6
10	ICU (ventilated)	4
10	Died	193