



Working on
behalf of

HS2

HS2 Area North Update



End of Year Progress 2021

- Trial Trenching works Complete
- 18 Mitigation sites investigated and site works complete
- Top Soil Test Pitting has been complete
- EWC phase of Geoarchaeological works are complete
- Majority of Built heritage recording and monitoring works complete





Working on
behalf of

HS2

HS2 Phase One Enabling Works Archaeological Mitigation

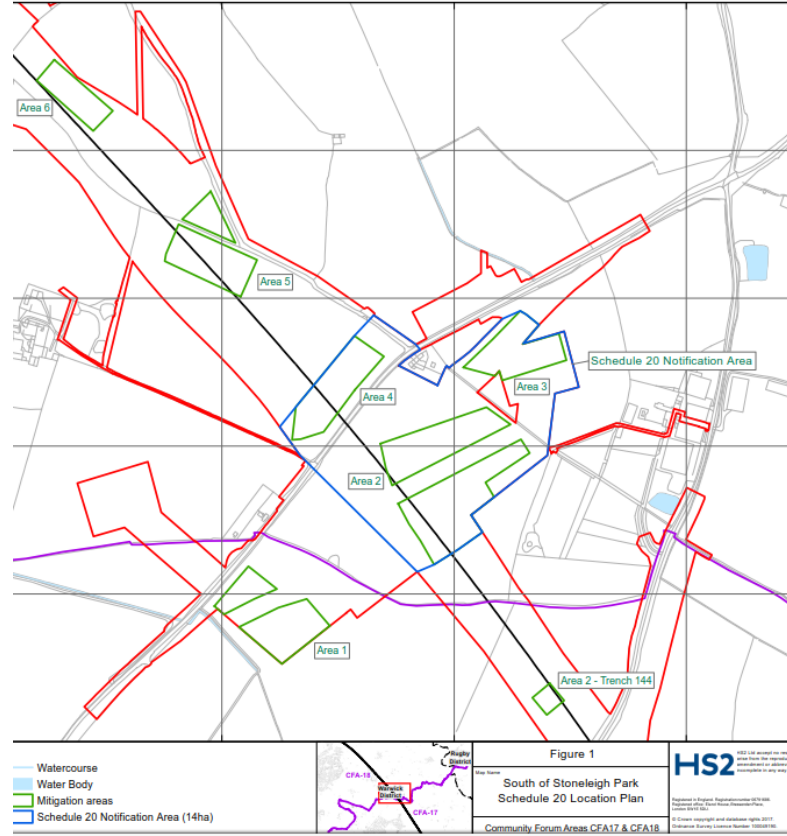
Top Soil Test pitting

- Very little identified
- 21, one hectare blocks complete
 - (excludes those completed during mitigation)
- 1 block of test pitting near Roundhill
 - some assemblages of flint and undertook further test pitting

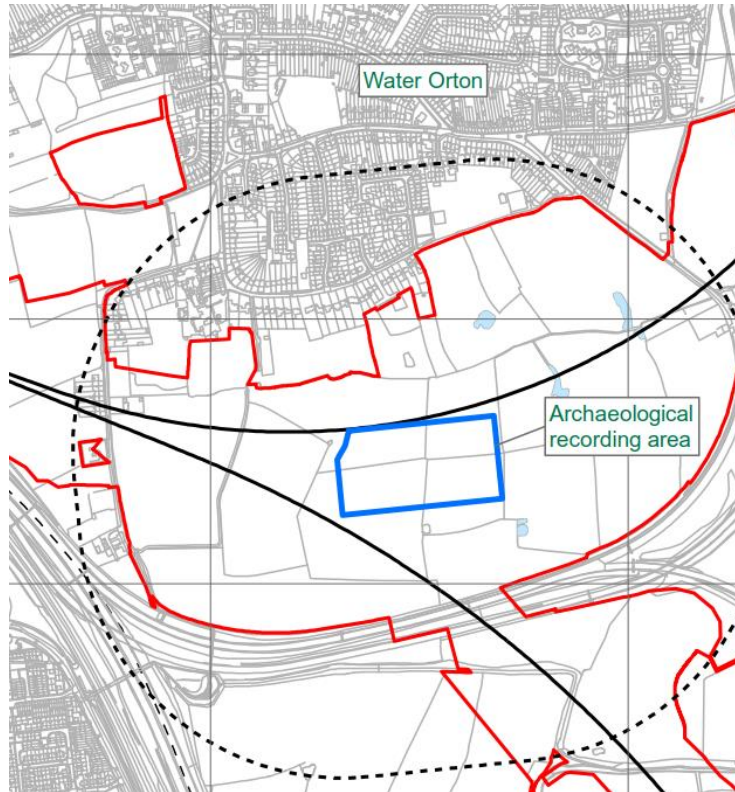
Built heritage

- Schedule 18 Table 1 and Table 2 works nearing completion
 - Monitoring works and baseline data to be handed over to the Main works contract.
-

South Stoneleigh



Water Orton



Roundhill

1 Iron age and 2 Roman enclosures identified



Works to take place in 2022

- Built heritage works including:
 - Dismantling and salvage of Coleshill Farmhouse
 - Innovative setting studies looking at landscape change
- Two additional mitigation sites
 - South of Birmingham Road
 - Drayton Basset Gallows Brook



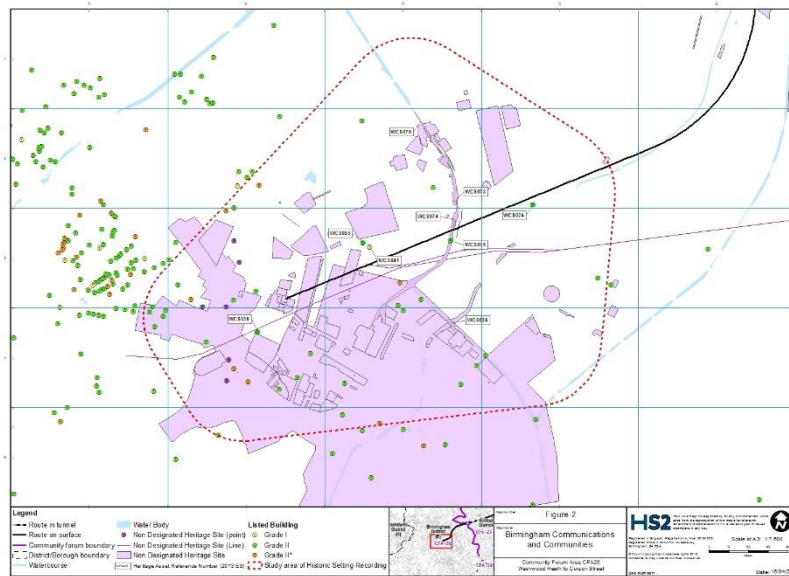
Coleshill Farmhouse

Dismantling to take place next year

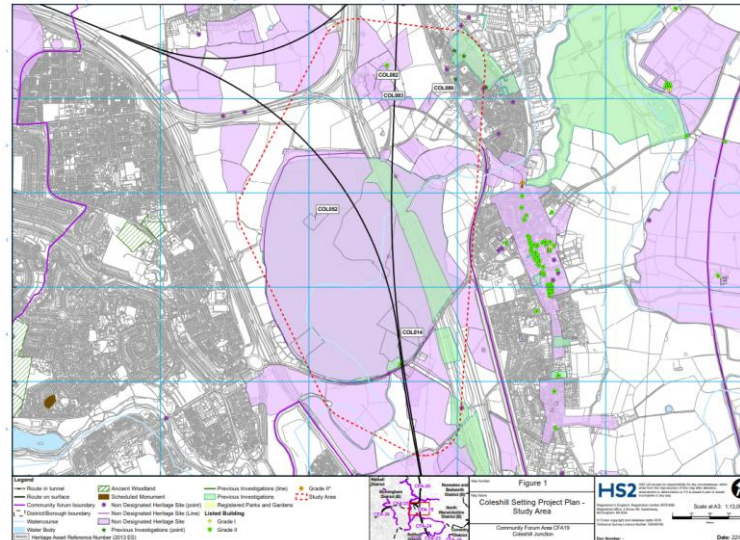


Setting Studies

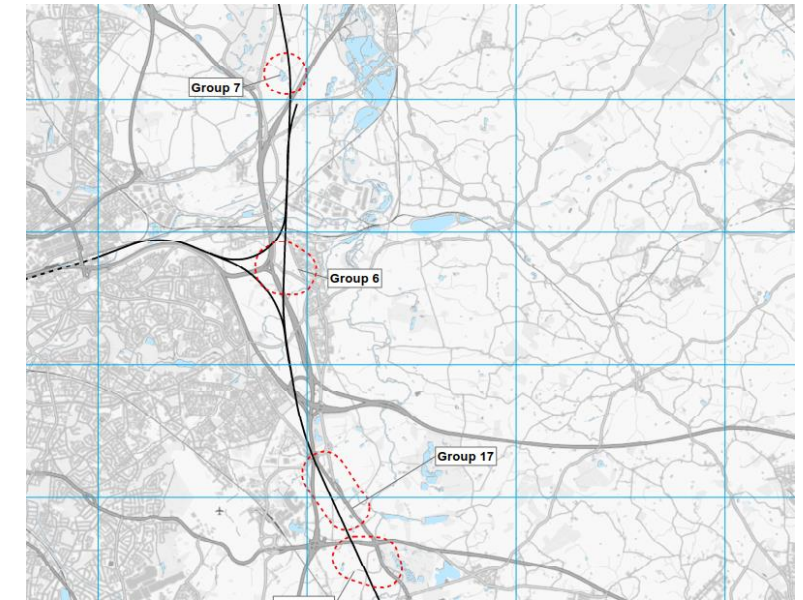
Communication and communities in Birmingham



Coleshill



The Rural Landscape





Working on
behalf of

HS2

Mitigation 2022

South of Birmingham Road

Evidence for agricultural, domestic and industrial activities was recovered, while dateable artefacts recovered suggesting an occupation spanning the 2nd to 4th centuries AD



Gallows Brook, Drayton Bassett

Trial Trenching identified
burnt mounds and possible
palaeo channels



Coleshill







Working on
behalf of

HS2

Community engagement



Approach

1. Community Participation
2. 'Hubs' – the use of local expertise
3. Revitalise networks
4. Exhibit – and provide material for public realm

thinktank
Birmingham science museum

Birmingham Museums

BIRMINGHAM conservation trust
new futures for Birmingham's historic buildings

heritage open days



Participation

- Open Days
- Digs
- Re-enactment days
- Talks
- Meet the Experts



 **wessex**
archaeology

Working on
behalf of

HS2

Mid-Late Iron Age

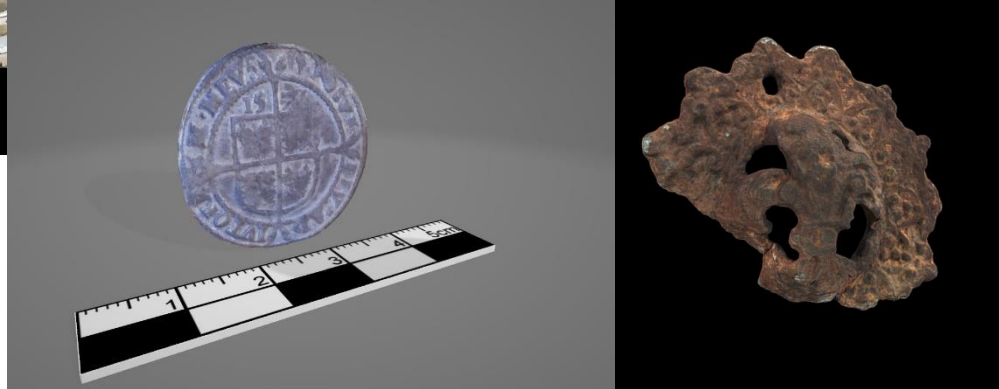
We think the roundhouses are still from the Iron Age, but a later stage of the settlement.

They signify growing sophistication in landscape management and may be contemporary to the enclosing field system

This is a reconstruction of another Iron Age site in Somerset. Coleshill may have had a settlement similar to this



 Wessex
archaeology

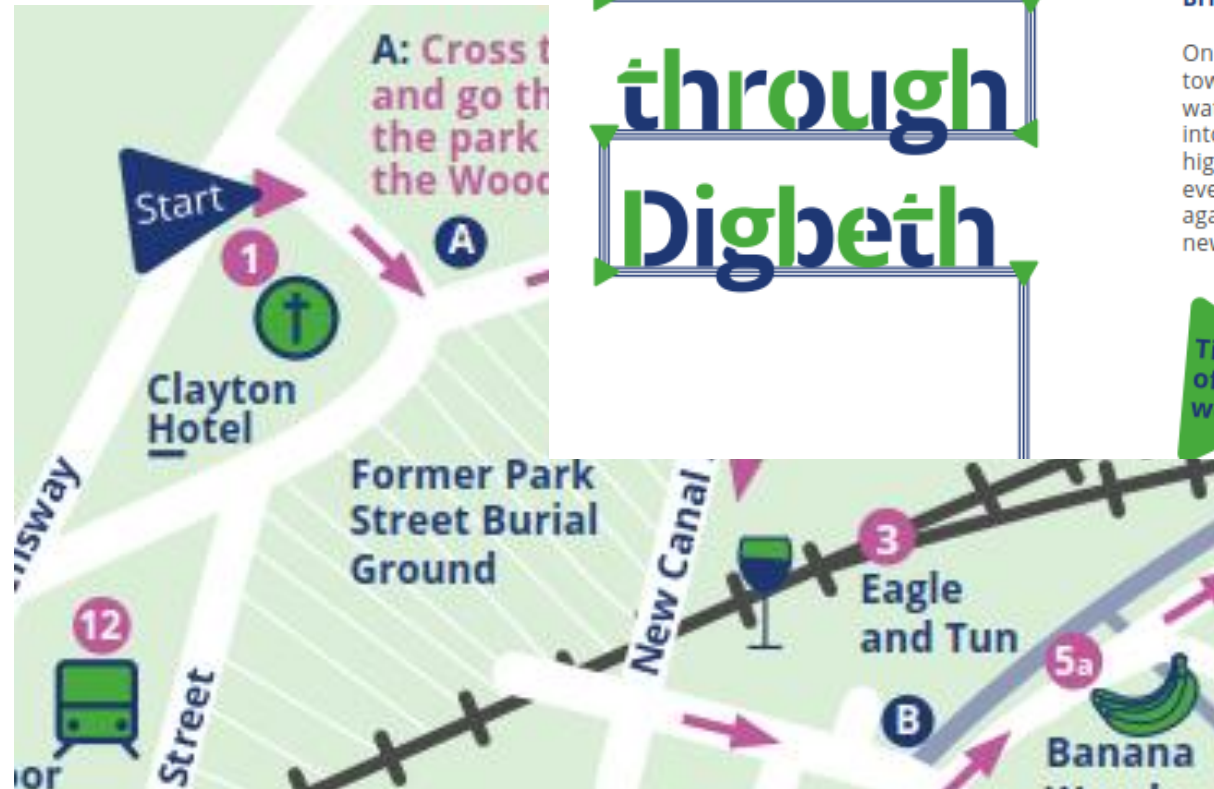


Hubs and Networks

- Webinars
- Online Exhibition
- Blogs

Hubs and Networks

- Webinars
- Online Exhibition
- Blogs
- Self-guided walk
- YAC



A self-guided walk through Digbeth



This guided walk explores an often-forgotten corner of Birmingham, Digbeth, charting its transformation from open fields to being one of Britain's industrial powerhouses.

Once on the outskirts of a rural market town surrounded by orchards and water meadows, Digbeth developed into a slum in the 19th century with the highest population density the city has ever seen. Today the area is changing again as work gets underway for the new HS2 rail network.



MOLA HEADLAND
INFRASTRUCTURE

Young Archaeologist Clubs

- Cannock Chase and Ironbridge
- Solihull



Visualisations



Illustration

Fosse Way



Curzon Street Station



Park Street



Exhibit

- STEM in archaeology
- Told by individuals
- Collaborative effort

