

HS2

Area South

2021 Overview

Area South - EWC 2021 Overview

- All EWC (CSjv) fieldwork and building recording completed
- Remaining historic environment works (with the exception of some utilities) to be completed by:
 - Skanska Costain Strabag (SCS) – Main Works Contractor from Euston approaches to West Ruislip
 - Mace Dragados (MDjv) - Station Construction Partner for Euston
 - Balfour Beatty VINCI SYSTRA (BBVS) - Station Construction Partner for Old Oak Common
- All EWC deliverables (PPs, LSWSIs, reports) Code 1 & on H-SG Sharepoint
- OASIS uploads and ADS deposits near completion for all EWC works
- Detailed audit and consolidation of physical archive
- Main Works and Station Contractor handovers, briefings and cross-contractor working groups



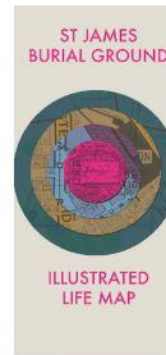
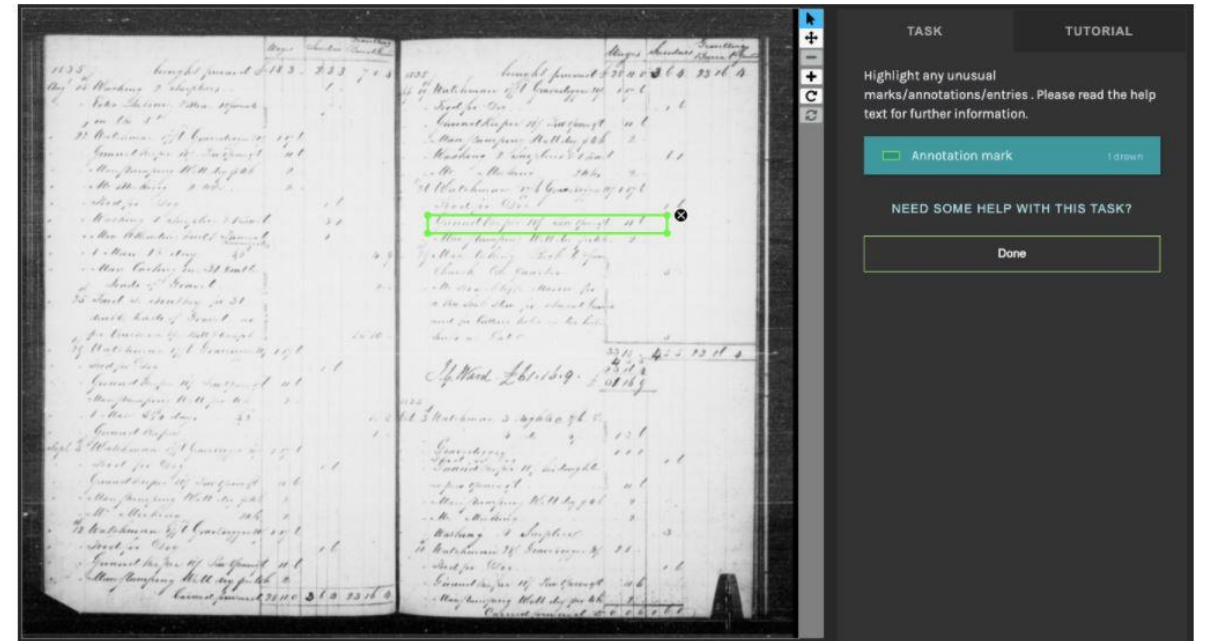
St James's Gardens (Area J)



- Exhumations along Cardington street completed – exhumation contractor with archaeological monitoring by MHI
- C.37 category 3 'special cases' burials retrieved
- Post excavation assessment ongoing (now transferred to MDjv)

Community engagement

- St James's Gardens Burial Record Digitisation
- St James's Gardens Life Story Map and research workshops
- Key Stage 2 & 3 schools engagement (digital legacy learning resources and Osteolive! Workshops)
- Lunch and Learn talks
- Pop up events in Uxbridge and Ealing Broadway
- FOA Webinars - St James's Gardens, Old Oak Common, Hillingdon Hoard



Built Heritage



Built Heritage



Euston Area Update

Mace Dragados JV

Overview

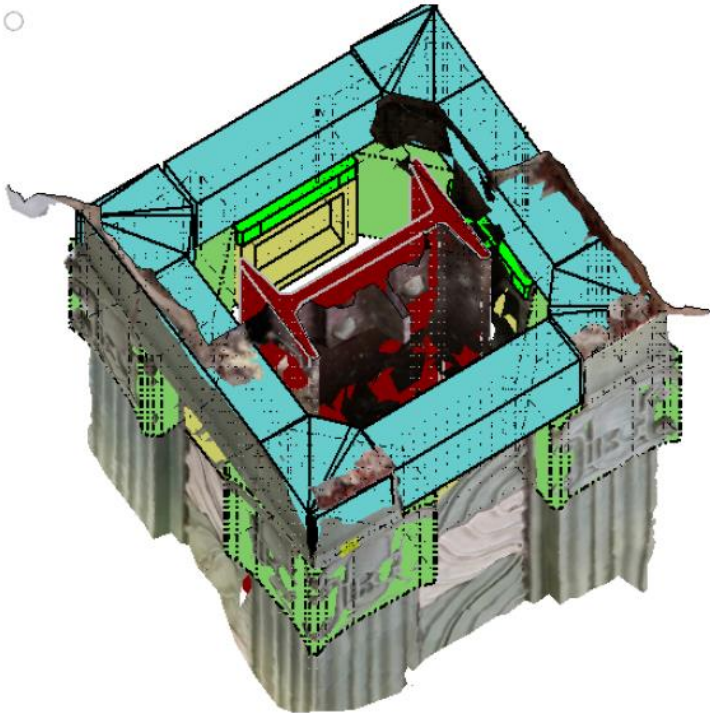
- MDjv now taken over heritage management from CSjv.
- Working with SDSC managing heritage in design development and construction management.

Current tasks

- Inputting into Scheme design.
 - Inputting into construction design and construction management documentation.
 - Reviewing, updating and preparing consents documentation.
 - Engaging with Heritage Stakeholders on work across the Scheme.
-

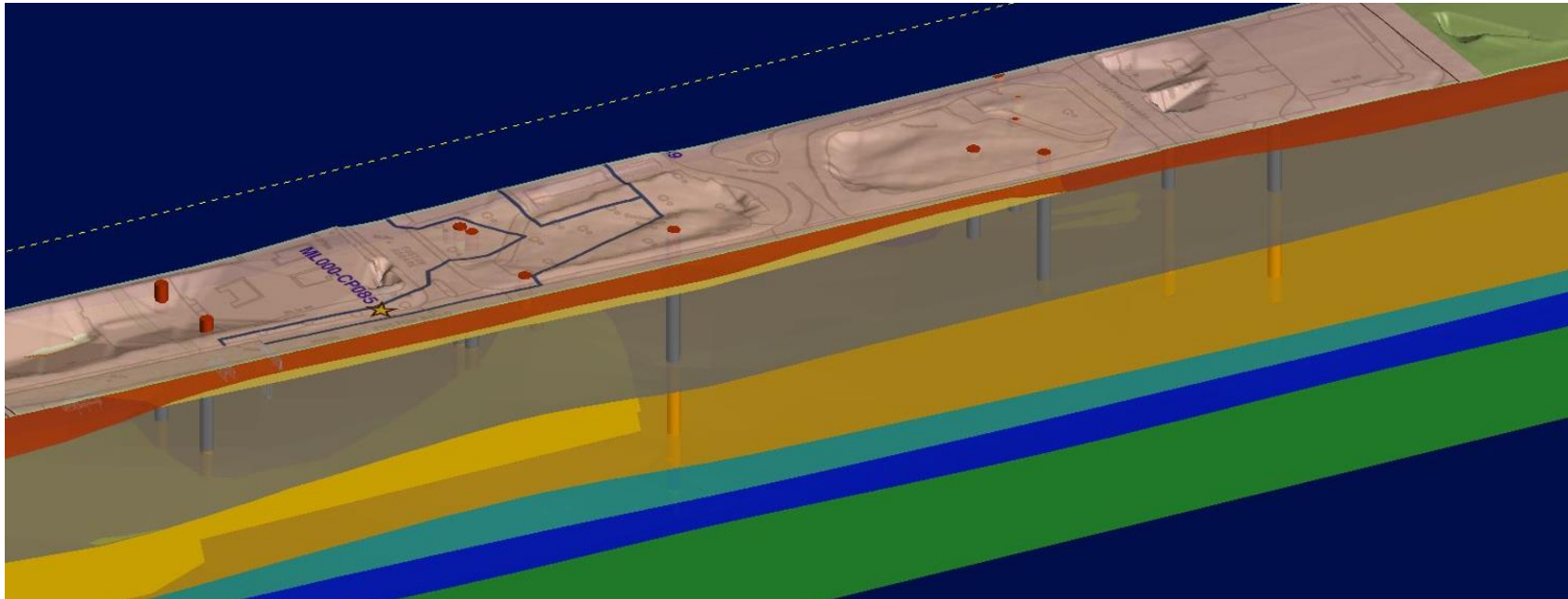
Royal College of General Practitioners

- Protection of the building during construction works.
 - Monitoring building movement.
 - Installing protection measures.



River Terrace Deposits

- Understanding when to implement construction integrated recording
 - Deep excavations related to the TSS vent shaft and LUL Interchange Box
 - Understanding the potential for survival of RTDs
 - Understanding the construction requirements



Brookwood Cemetery

- Reburial of remains from St James Gardens now complete
- Post excavation assessment is continuing at a good pace
- Planning permission has been given for the landscape memorial
- Detailed design complete and under review



Looking ahead

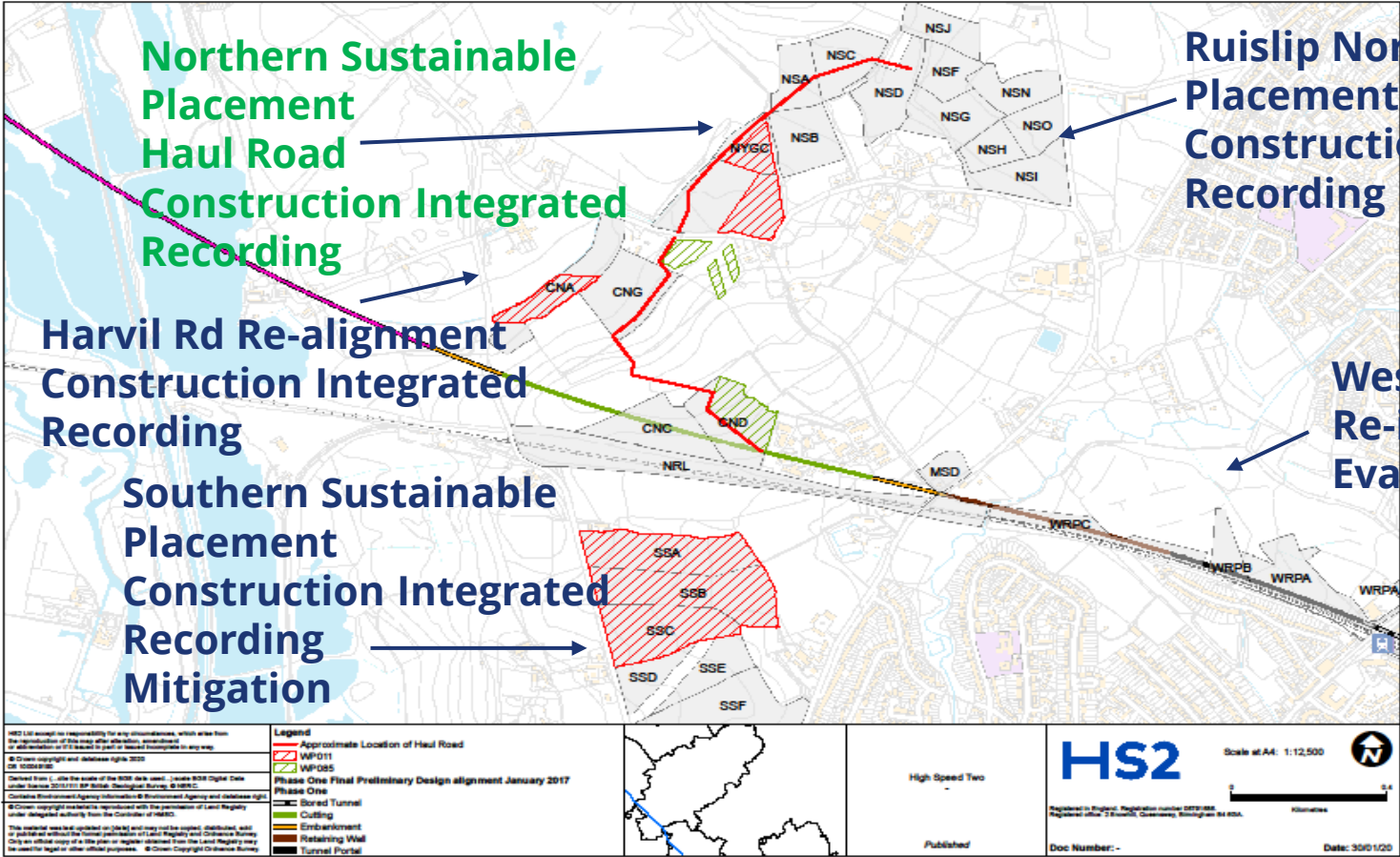
- Management of potential remains associated with St James's Burial Ground under Cardington Street and Euston Platforms
- Documentation related to investigation works
- Exploring the potential for Construction Integrated Recording in relation to River Terrace Deposits
- Engaging with Heritage Stakeholders on work across the Scheme
- Working with external bodies to look at opportunities for learning and outreach



Main Works Contractor Update

Skanska Costain Strabag JV

Archaeological Works - 2021 & 2022



Ruislip Northern Sustainable Placement - Eastern Mound Construction Integrated Recording

West Ruislip Golf Course Re-instatement Evaluation & Mitigation

Northern Sustainable Placement Haul Road Construction Integrated Recording

Harvil Rd Re-alignment Construction Integrated Recording

Southern Sustainable Placement Construction Integrated Recording Mitigation



Chronology (CSJV & current SCS investigations).

Palaeolithic: *Possible Middle Palaeolithic.*

Mesolithic: *“Long Blade” lithics from a terrace of the River Pinn at West Ruislip Golf Course (WRGC, Area B).*

Neolithic: *Limited, some evidence at Ruislip Northern Sustainable Placement Area/WRGC.*

Early Bronze Age: *Absent*

Mid Bronze Age: *Evidence of dispersed activity at Ruislip Southern Sustainable Placement.*

Late Bronze Age: *Cremations and potential evidence of domestic activity at WRGC, evidence of dispersed activity at Ruislip Southern Sustainable Placement.*

Iron Age: *Absent except for the “Hillingdon Hoard”.*

Romano-British: *Limited evidence from WRGC, Evidence of domestic activity at the periphery of habitation at Ruislip Southern Sustainable Placement, possible evidence of rural industry at Ruislip Northern Sustainable Placement.*

Medieval: *Extensive evidence of rural industrial activity at WRGC (tile kiln subject to repeated episodes of abandonment and re-use), Two kilns at RNSPA a Pottery Kiln 11th-14th century, use of 2nd kiln is less clear but included bloomery waste, similar chronology. Palaeoenvironmental evidence from an associated well. No evidence of domestic activity – is Newyears Green a DMV?*

Early Post Medieval: *Continued use of tile kiln at WRGC into the 17th Century.*

The Hillingdon Hoard



The Hillingdon Hoard

- Greater London Archaeological Advisory informed
- Reported to the Coroner under the Treasure Act 1996
- Inquest date awaited



Euston Scissor Box: C19th Wall



- High resolution photogrammetry
- Measured survey to supplement the photogrammetry
- Level of reporting commensurate with previous work on similar assets.
- Construction integrated recording if complete removal is required.
- Preservation *in situ* if and where possible

Results

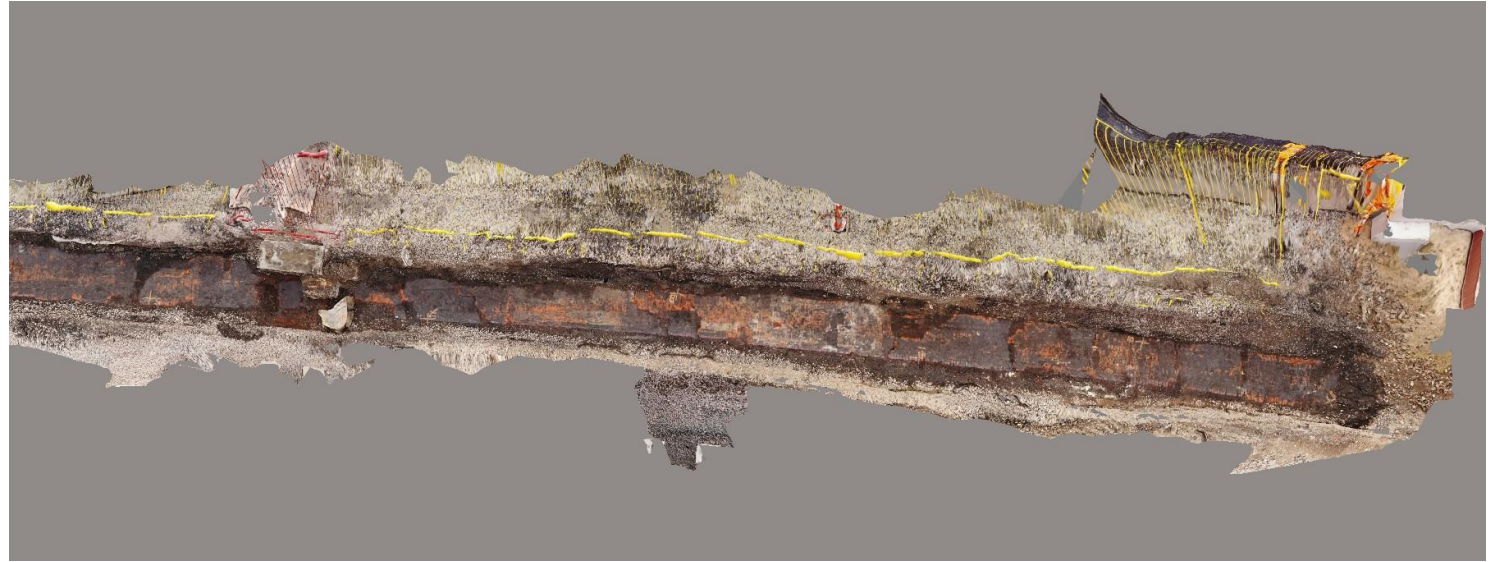
Approximately 100m long

1200mm in depth

9 courses of brick with Portland cement mortar

Composition of brickwork variable

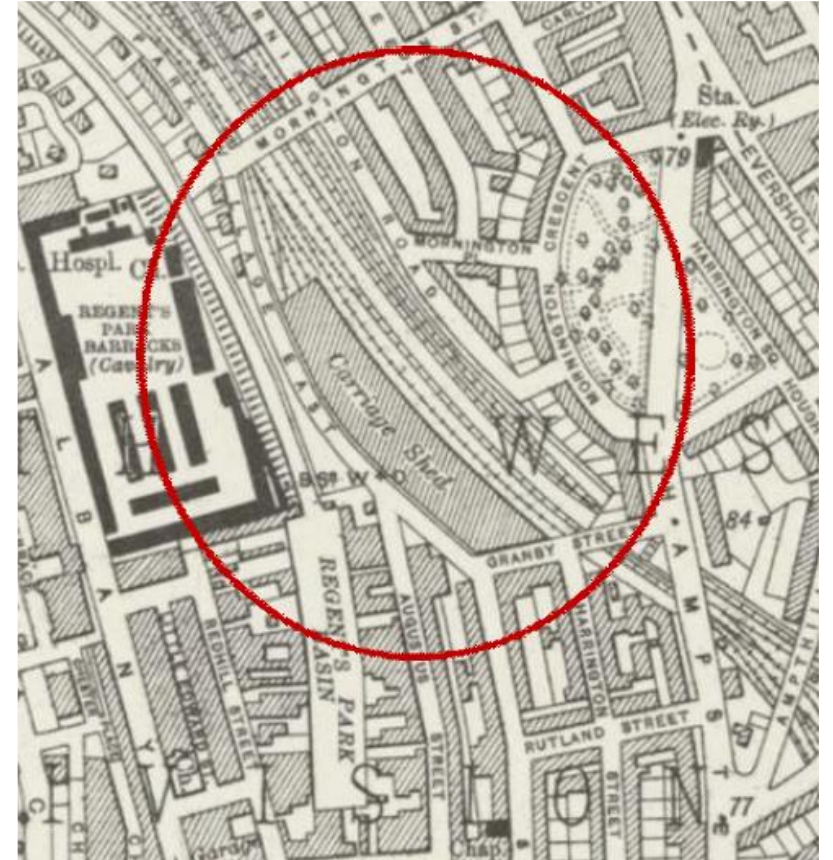
Base of Portland Cement with substantial quantities of pebbles and gravels



Provenance ?



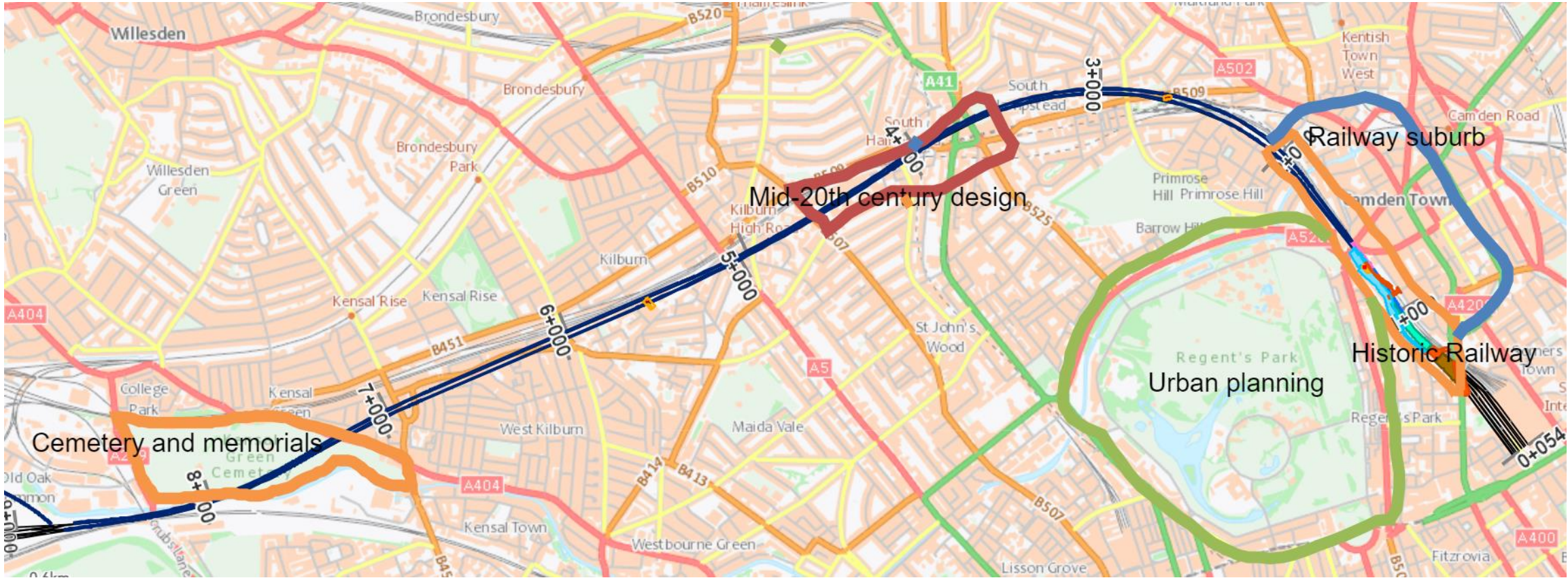
1893 OS Revision



1920 OS Revision (surveyed 1913-14)

Built Heritage: Significance

- John Nash and early 19th century urban planning
- Early 19th century railway: Robert Stephenson
- Mid-late 19th century suburban expansion
- Kensal Green Cemetery
- Mid-20th century design



Heritage asset protection

Schedule 18:

- Table 1: buildings authorized to be demolished altered or extended
- Table 2: buildings authorized to be altered or extended for heritage or monitoring purposes

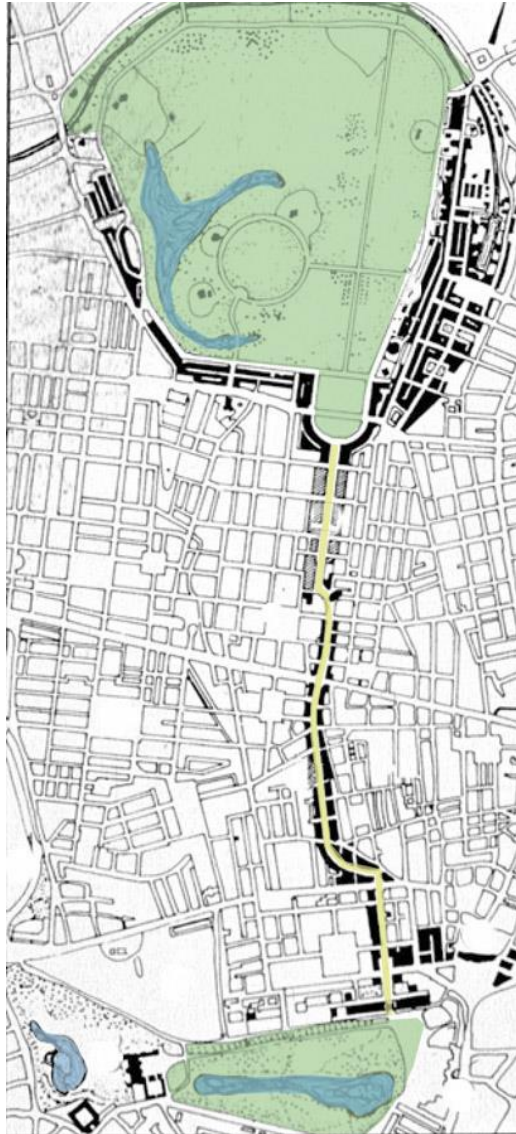
Table 1 Mitigation measures predefined

Pair of stone piers with lamp standards to west end of Mornington Street Railway Bridge, Mornington Terrace	1409727	II	To be removed, stored and reinstated
Pair of stone piers with lamp standards to east end of Mornington Street Railway Bridge, Park Village East	1391094	II	To be removed, stored and reinstated
Concrete ramp and planting box in Alexandra Road Estate	1130403	II*	Demolition of the concrete ramp and planting box to construct the Alexandra Place vent shaft
Gloucester Gate Bridge	1078329	II	Alteration relating to utility modification work
Parkway Tunnel and Cutting	1113255	II	Demolition of the western wall of the cutting

Table 2 Mitigation measures to be determined

119, 121 and 123 Parkway and attached railings	1113253	II
125 Parkway and attached railings	1113254	II
York and Albany Public House, 127 and 129, Parkway	1380134	II
2-16 (even), 22-34 (even), 36A and 36B and attached railings, Park Village East	1322056	II*
Regents Park Barracks Officers' Mess, Regents Park Barracks, Block K	1378622	II
1-8 (odd and even), 10-14 (odd and even) and 17-19 (odd and even) and attached railings, Park Village West	1322057	II*
Two lamp posts outside numbers 8 and 11 Park Village West	1322061	II
58 Mornington Terrace and attached wall and gate piers	1113148	II
Edinboro Castle, Mornington Terrace	1113147	II

John Nash & Regency London





Integrated working

Interdisciplinary working group co-ordinating heritage, design, engineering, engagement & project management inputs to asset protection of Listed Buildings. Combined inputs required to inform and manage area east Schedule 18 consent and programme risks.

- Client representatives
- Asset protection team – programme/project management/monitoring
- Area environmental/engineering team - operational co-ordination
- Engagement team – facilitating access and stakeholder consultation
- Design House – ongoing technical design support
- Asset Management: & Asset Mitigation Supplier Framework Procurement:
 - conservation accredited engineers and contractors, eg Byrne Looby

Information & Analysis

Adopting an evidence-based approach to inform the scope and nature of works required

Ground Movement Assessments

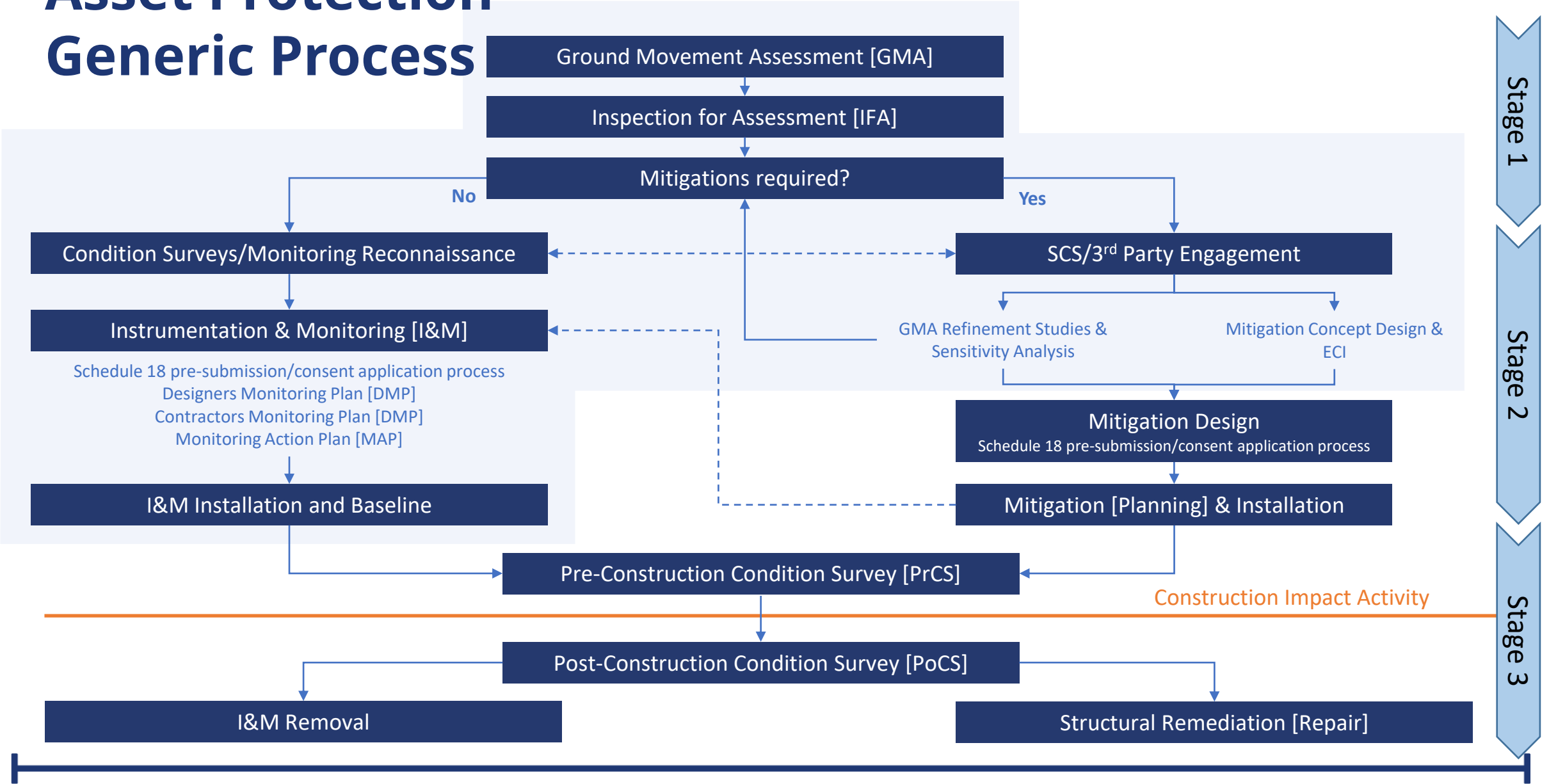
- Building category
- Damage category

Survey for Design Assessment (WP190)

- Building condition
- Sensitivity to harm

EWC extended I&M baseline

Asset Protection Generic Process



Asset Protection Strategies

All assets that have been assessed within the Design House Phase 3 GMAs have been assigned an Asset Protection Category by SCS:

Category	Description
Category 1 – Structural Intervention (includes monitoring and repair by default)	The level of damage predicted is not acceptable, and threatens the serviceability limit of the building, or historical value of the structure.
Category 2a – Prepare, Monitor, Repair	Sensitive features of an asset are assessed and prepared ahead of ground movements being realised. E.g flexible utility connections, removal of glazing.
Category 2b – Monitor Repair	Monitor structure and ground movements to compare against predicted movements.

Asset protection categories refer to mitigations applied to each Third Party asset. First form of mitigation for SCSJV shall be construction related – industry best practice methods, control excavation profile, timely tunnelling advance ring closure, sequencing and limiting size of advance faces.



SKANSKA

COSTAIN

STRABAG



Key

- Tilt 
- Prism 
- Patch 

Levels to be provided by SCS engineer



Monitoring parapet as well ~CH850

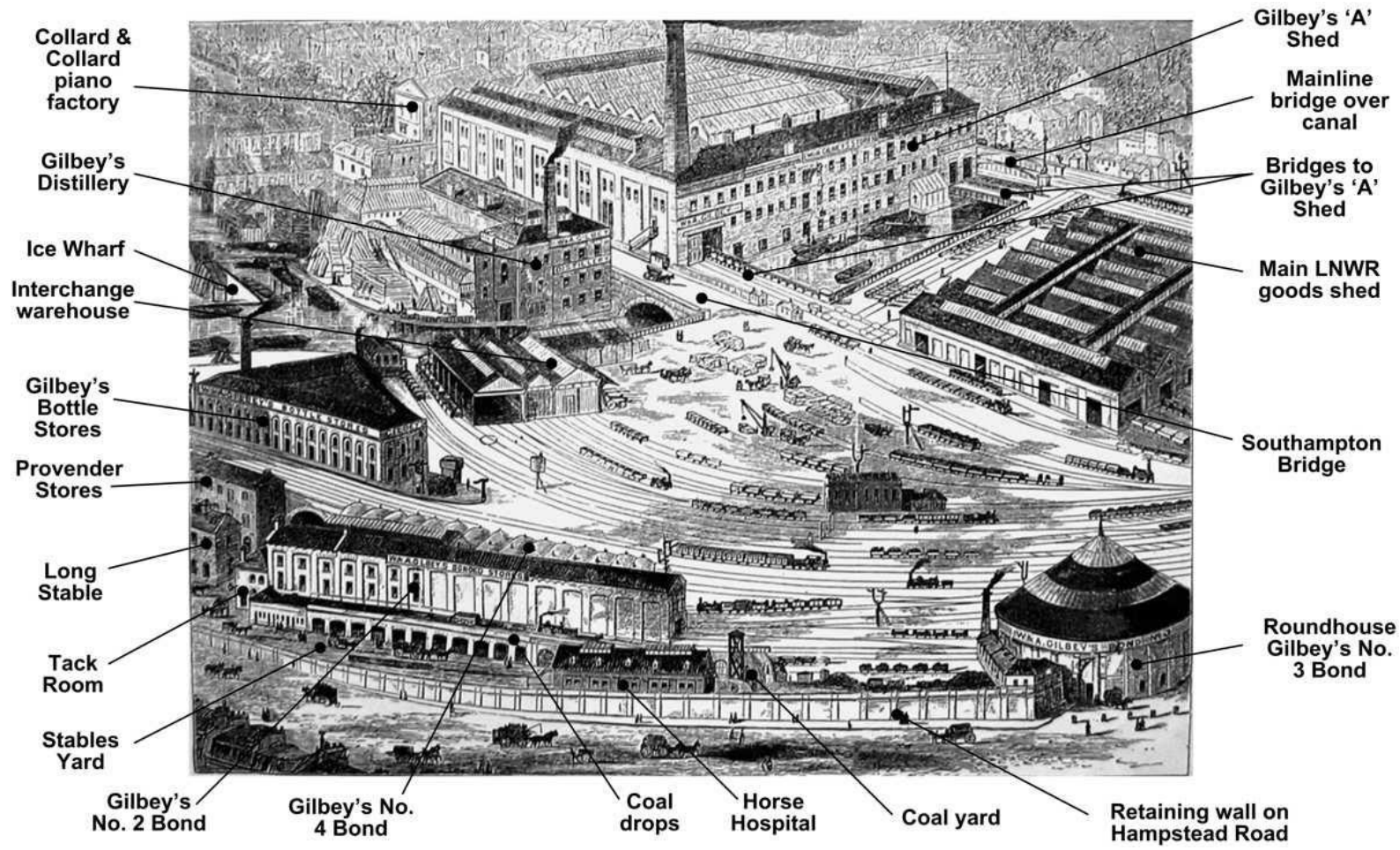
~CH990

Note Heritage Pier

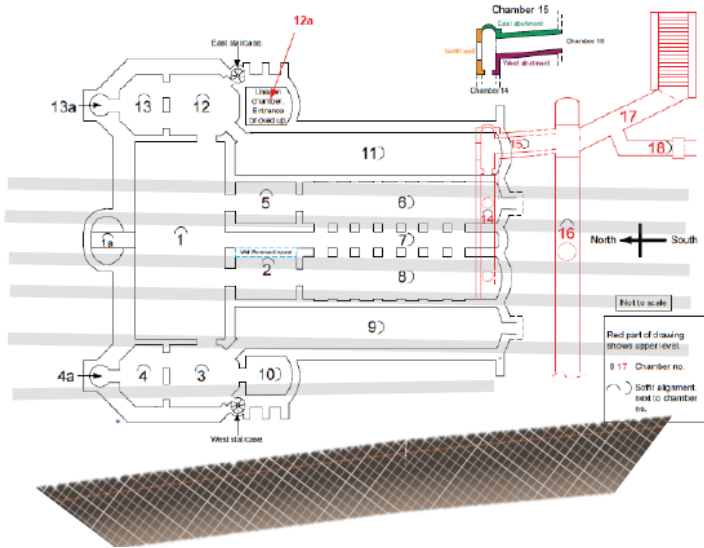
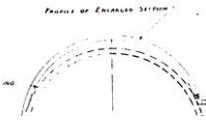
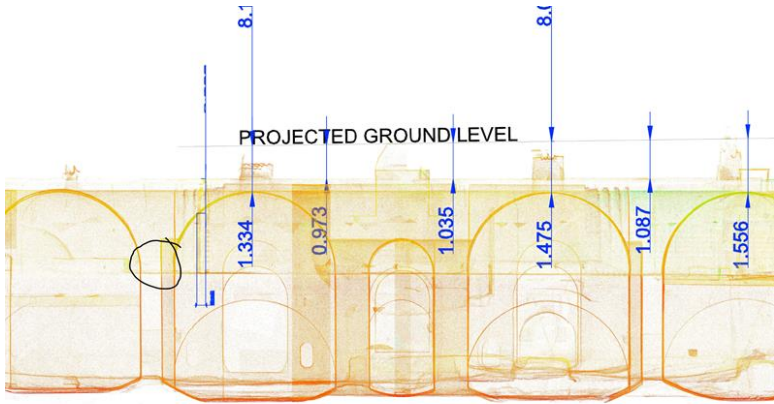
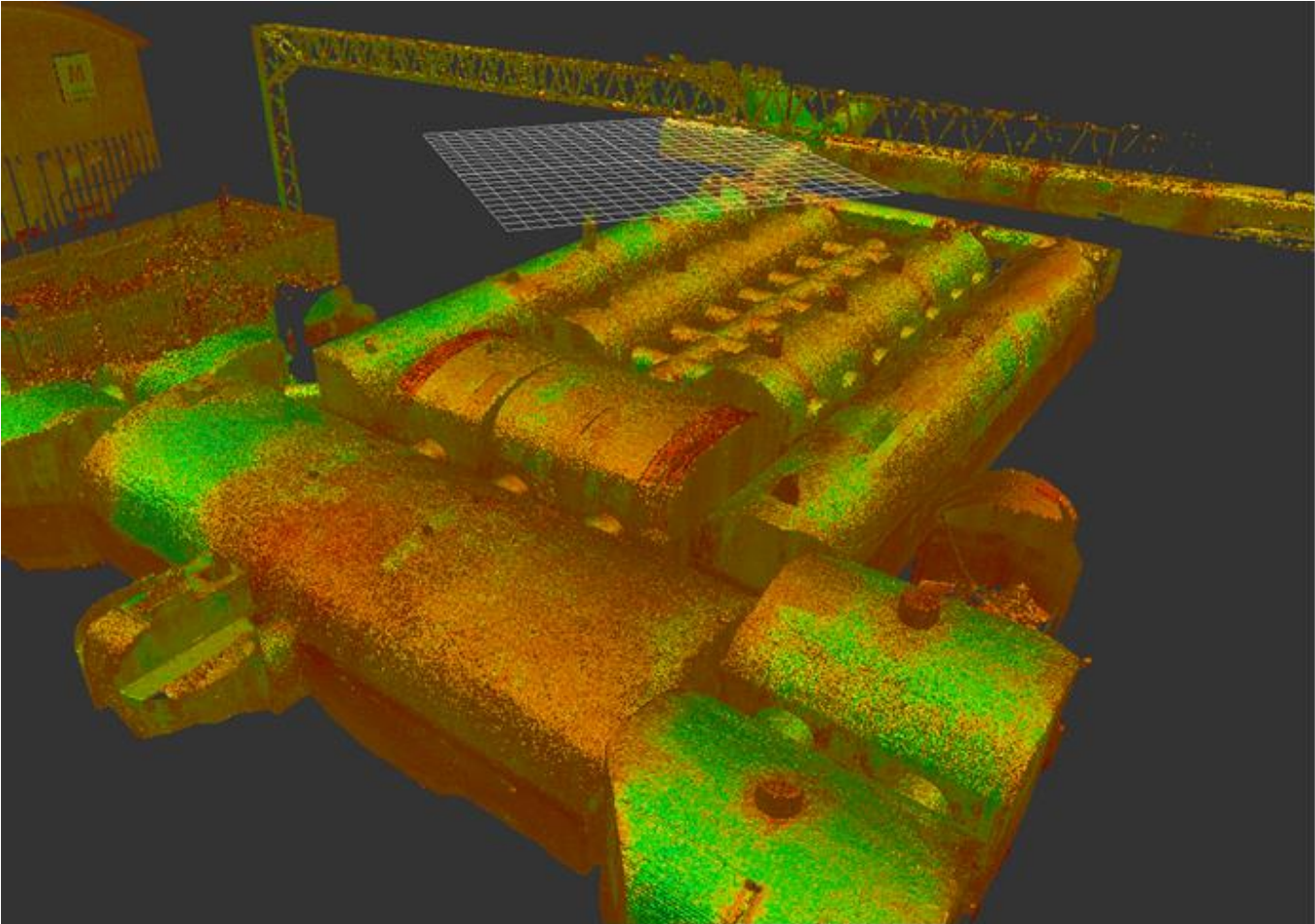
Primrose Hill



London and North-west Railway



Camden Incline Winding Engine Grade II*



Kensal Green cemetery

