



Supporting Families Programme evaluation 2015 to 2020

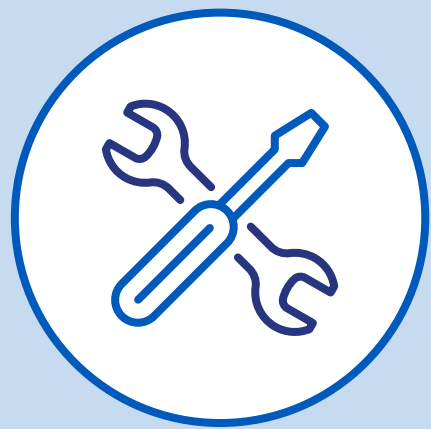


Department for Levelling Up,
Housing & Communities

Supporting Families programme 2015 to 2020:

£920M targeted at 400,000 families at risk:

- Crime or anti-social behaviour
- Not attending school regularly
- Financial exclusion
- Children needing help or with Child Protection Plan
- Domestic violence and abuse
- Health problems



Methodology



Largest data linking exercise undertaken in HMG to date – sharing administrative data from MoJ, DWP and DfE for over one million individuals. ONS undertook the linking.



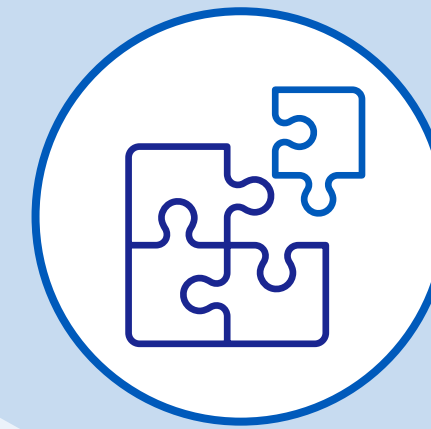
Impact evaluation was quasi-experimental in design. Propensity Score Matching (PSM) controlled for differences between families on the programme and a comparison group of families not on the programme. This allowed DLUHC to isolate the impact of the programme, and measure its effect on outcomes.



Impact analysis findings fed into a **Cost Benefit Analysis (CBA)**. The CBA applied unit costs to outcomes, multiplying these by the number of individuals or families calculated to have experienced each benefit (or disbenefit), as a result of the programme.

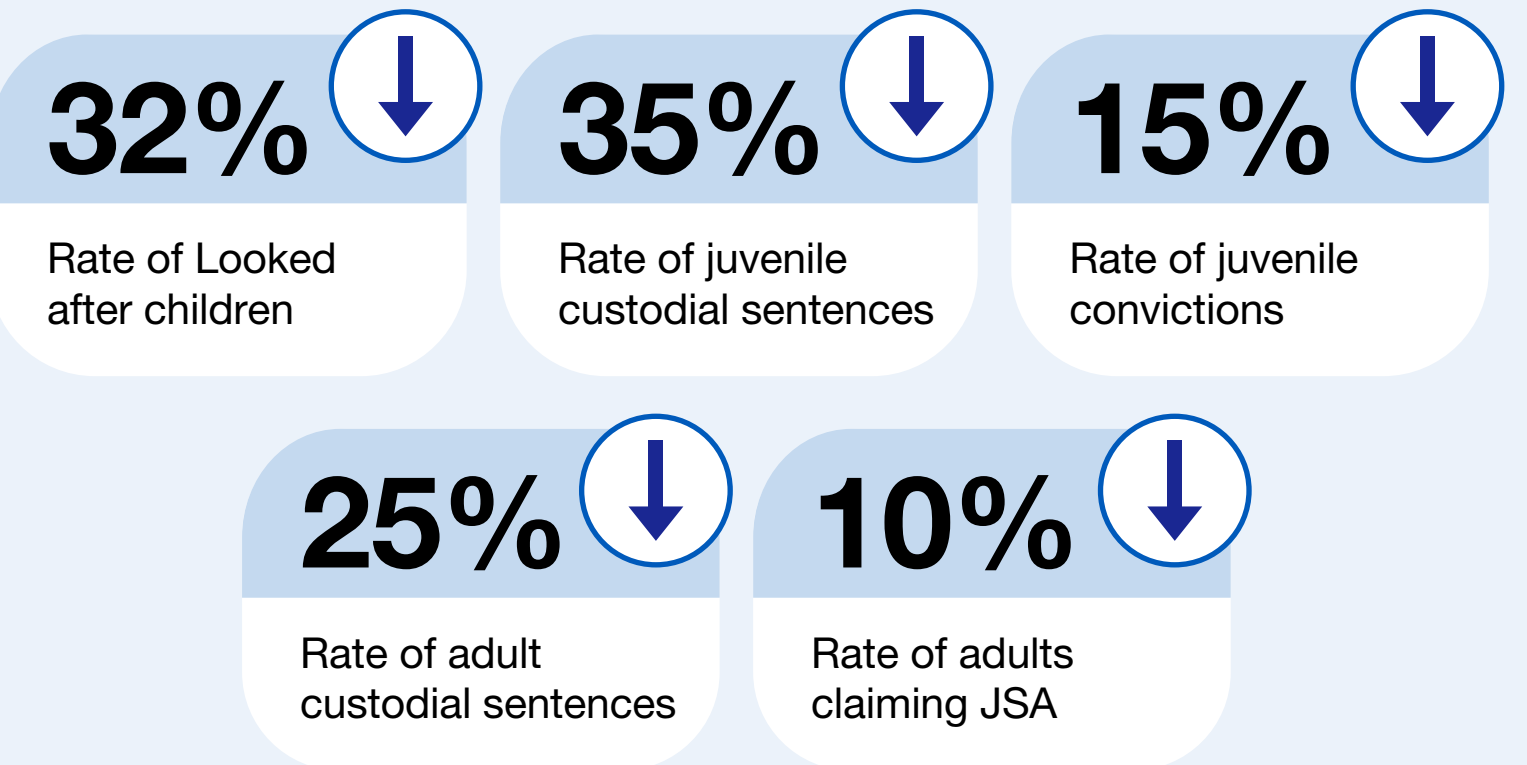


Process evaluation was conducted to understand how the programme was implemented and adapted. Longitudinal research was conducted with key workers and families to understand their experience of the programme.



Findings

The programme delivered positive outcomes against key metrics two years after joining the programme, including reductions in:



Feeding these results into the CBA, we concluded the programme represents good value for money. For every £1 spent, the programme returned:





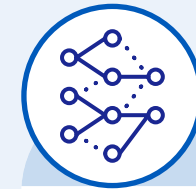
Supporting Families Programme evaluation 2015 to 2020



Impacts



Evaluation findings fed into the **successful 2020 Spending Review** bid where programme funding for the next three years was increased to enable more families to be supported.



Ground-breaking evaluation - unlocking large administrative datasets, innovative data linking, robust analysis to estimate the impact of the programme.



Supporting Families Evaluation was awarded the **Civil Service Award for Science and innovation in 2019.**



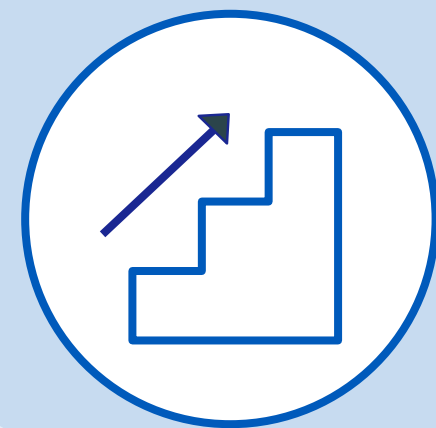
Links



[Read the main evaluation report](#)



[Read the further evaluation report](#)



Next steps



Variations in the effectiveness of different delivery models used for the programme remain unknown. DLUHC are proposing a series of trials to explore which practices and interventions drive the best outcomes for families, in order to optimise programme delivery.

