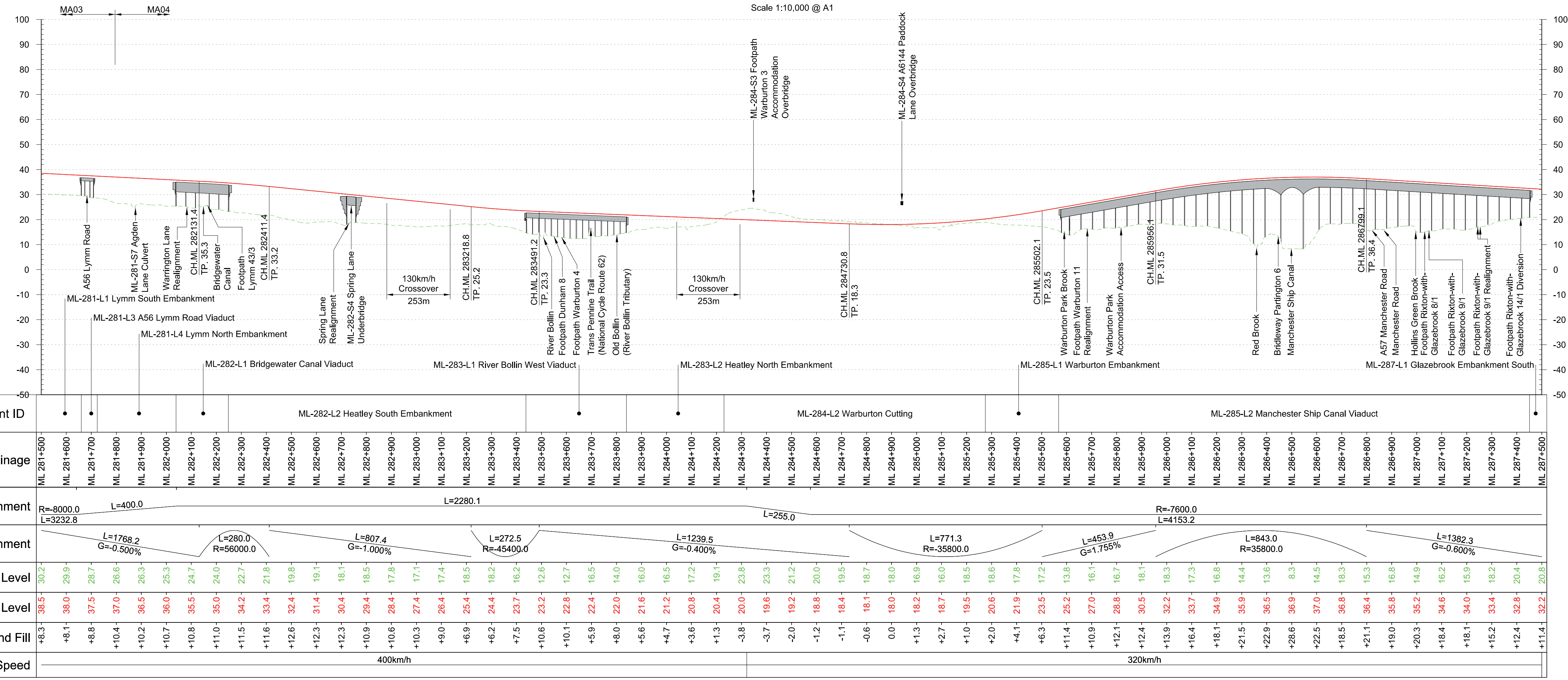


Plan
Scale 1:10,000 @ A1



Profile
Scale H:1:10,000 V:1:1000 @ A1

Fit for Acceptance

This document is issued for the party which commissioned it and for specific purposes connected with the captioned project only. It should not be relied upon by any other party or used for any other purpose. We accept no responsibility for the consequences of this document being relied upon by any other party, or being used for any other purpose, or containing any error or omission which is due to an error or omission in data supplied to us by other parties.

Rev	Description	Drawn	Checked	Con App	HS2 App	Scale with caution as distortion can occur.
P08	HBD Second Issue	DEG	JSA	GHU		
P07	HBD First Issue	CCL	JSA	GHU		
P06	CP3 Third Issue	DPL	GHU	DCL		
P05	CP3 Second Issue	DPL	TSH	DCL		
P04	CP3 First Issue	DPL	TSH	DCL		

HS2 accepts no responsibility for any circumstances which arise from the reproduction of this document after alteration, amendment or abbreviation or if it is issued in part or issued incompletely in any way.

© Crown Copyright and database right 2020. All rights reserved. Ordnance Survey Licence number 100049190

© Crown Copyright material is reproduced with the permission of Land Registry under delegated authority from the Controller of HMSO. This material was last updated on 2020 and may not be copied, distributed, sold or published without the formal permission of Land Registry. Only an official copy of a title plan or register obtained from the Land Registry may be used for legal or other official purposes.

Legends/Notes:

- Depot, station, headhouse, shaft or portal building
- Tunnel portal
- Railway system site
- Ecological mitigation pond
- Balancing pond
- Pumping station
- Replacement floodplain storage area
- Woodland habitat creation
- Wetland habitat creation
- Grassland habitat creation
- Landscape mitigation planting (scrub / woodland)
- Grassed areas
- Local placement
- Public realm
- Engineering earthworks
- Landscape earthworks
- Rail alignment formation
- Returned to suitable development use
- County boundary
- Borough / District boundary
- Major contour
- Community area boundary
- Existing watercourse
- Watercourse diversions
- New Ditches
- Hedgerow
- Major utility works
- Noise fence barrier
- Car Park
- Existing public right of way
- New, diverted or realigned public right of way
- Public right of way closure
- Tunnels external extent
- HS2 access
- Realigned highway
- Light Rail Transit
- Rail alignment

Registered in England
Registration No. 06791686
Registered office:
2 Snow Hill, Queensway,
Birmingham, B4 6GA

Creator/Organiser
MW JV (Mott MacDonald and WSP Joint Venture)

Zone	M2 Wide – Hough to Bamfurlong	Project/Contract	CDER Area 1 (CE1)
Design Stage	Interim Preliminary Design HBD	Discipline/Function	Civil
Drawing Title	M2 Hough to Bamfurlong Plan & Profile Sheet 7 of 10 Chainage 281+500 to 287+500	Drawn	DPL
		Checked	GHU
		Approved	MSI
		Date	29/01/2018
		Scale	AS SHOWN
		Size	A1
		Drawing No.	2DE01-MWJ-CV-DPP-M002-220055
		Rev.	P08

Copyright - Accepted