



Public Health
England



Test and Trace

COVID-19 SITUATIONAL AWARENESS

SUMMARY

MAIN REPORT
20 July 2021

Contents

This situational awareness summary report collates information and intelligence from various sources. The summary will be provided daily and the content will continue to be developed.

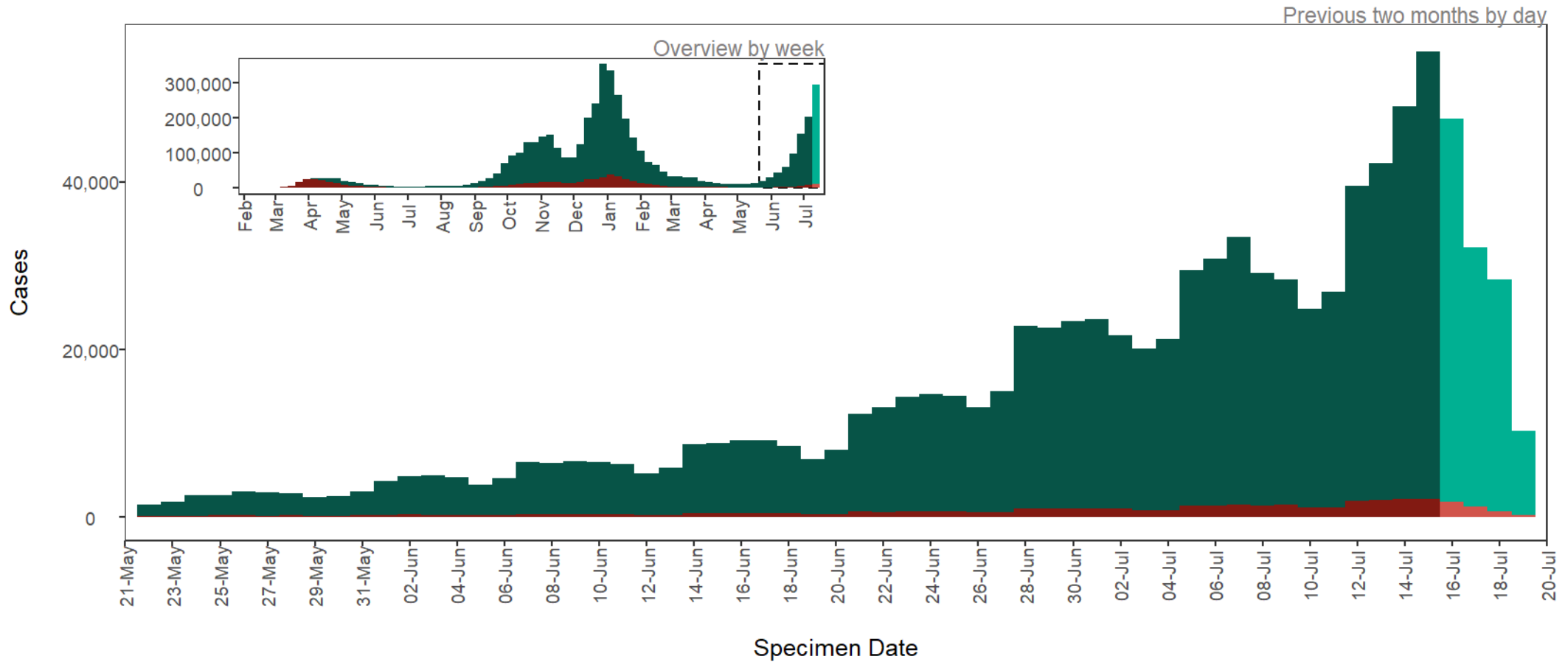
- [National context](#)
- [Case rate and case rate change maps](#)
- [High level summary tables](#)
- [REDACTED]
- [Case numbers by test type](#)
- [Case rates, \[REDACTED\], positivity and testing](#)
- [REDACTED]
- [REDACTED]
- [REDACTED]s
- [Prevalence](#)
- [Hospitalisation](#)
- [REDACTED]
- [REDACTED]
- [REDACTED]

Throughout the SAR:

Lower tier local authorities is used to represent local authority districts, unitary authorities, metropolitan district and London boroughs,
Upper tier local authorities is used to represent counties, metropolitan counties, London boroughs and unitary authorities

National context

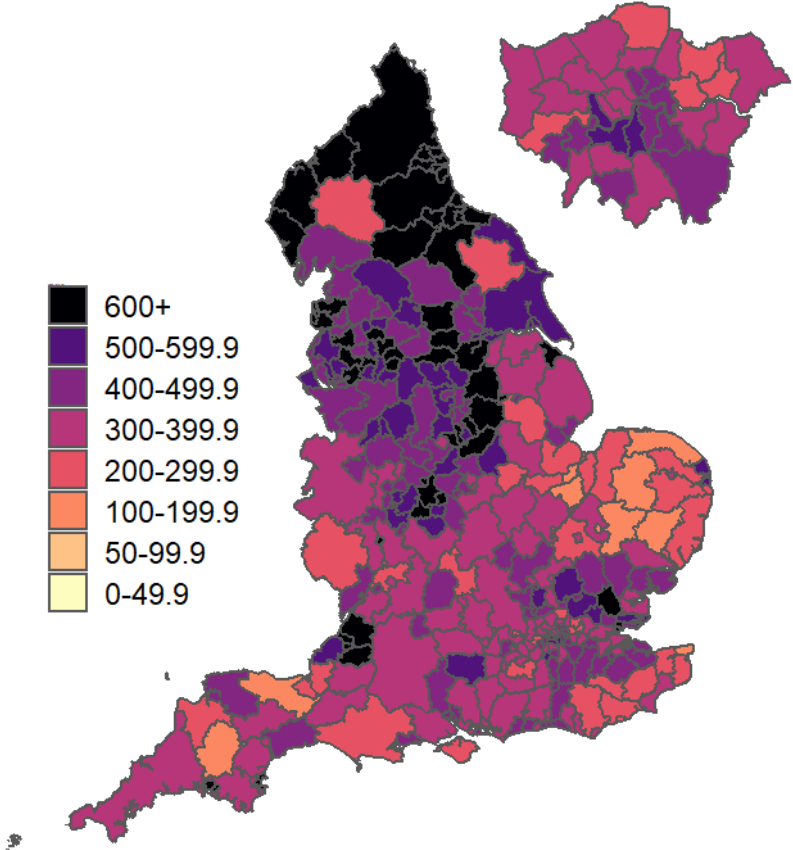
England confirmed cases - epidemic curve



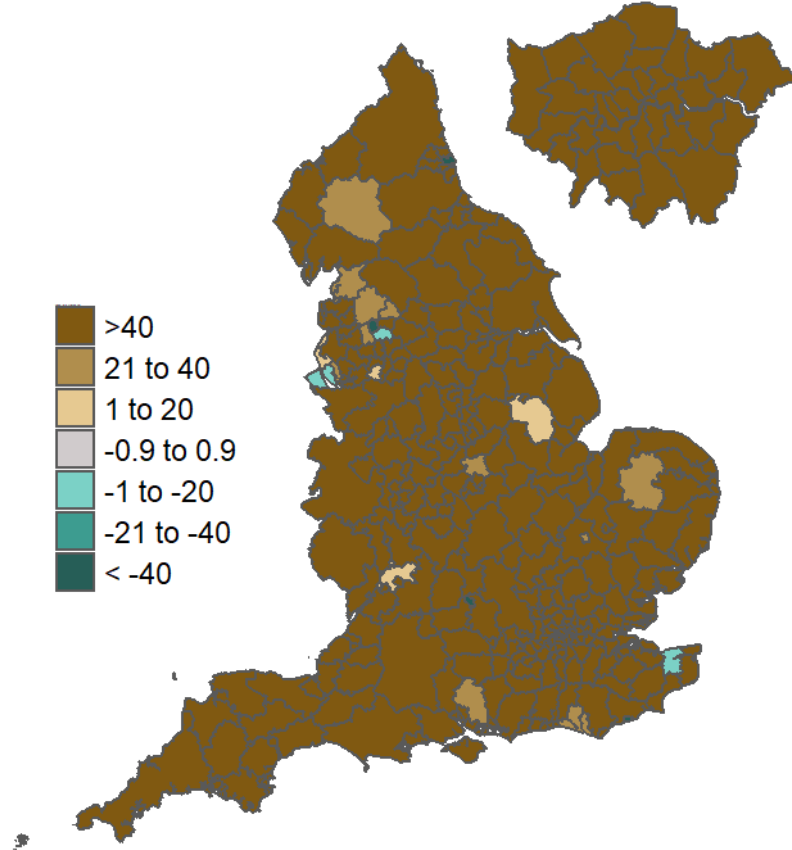
Bars shaded in light red and light green are provisional. Figures are expected to change as results are received for additional samples tested during this period. Inset epi curve is based on weekly reports from date of first case diagnosed. Main epi curve shows daily cases truncated to show the previous two months. Value labels are for combined pillar 1 and pillar 2 cases.

Case Rates - Geographical spread of COVID-19 in England

Weekly case rates per 100,000 population
by local authority
09 Jul to 15 Jul 2021



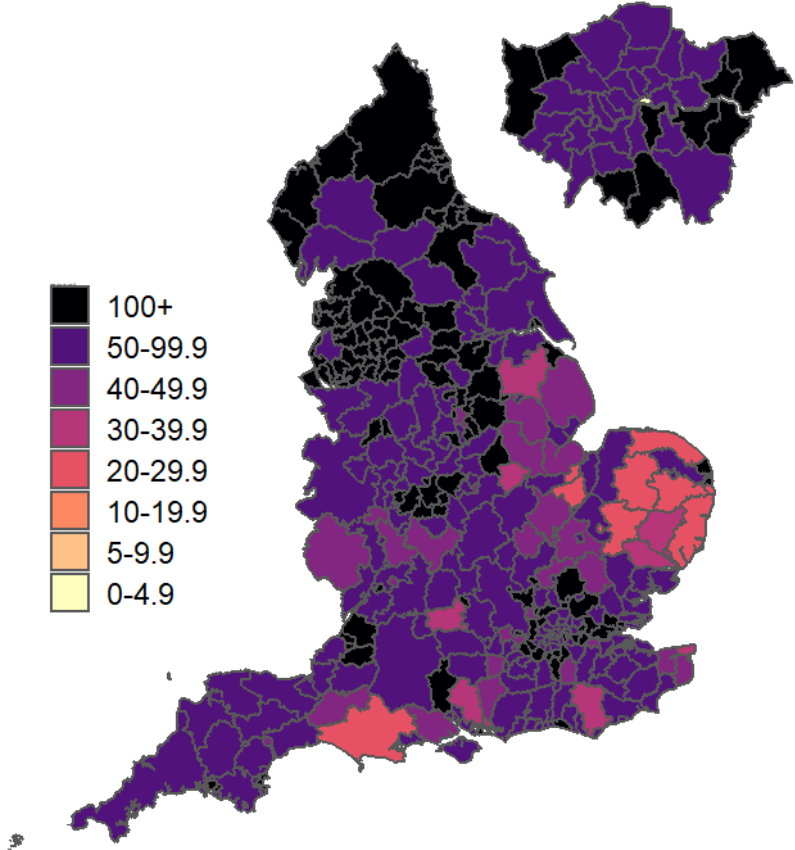
Absolute case rate change per 100,000 population
by local authority
02 Jul to 08 Jul 2021 and 09 Jul to 15 Jul 2021



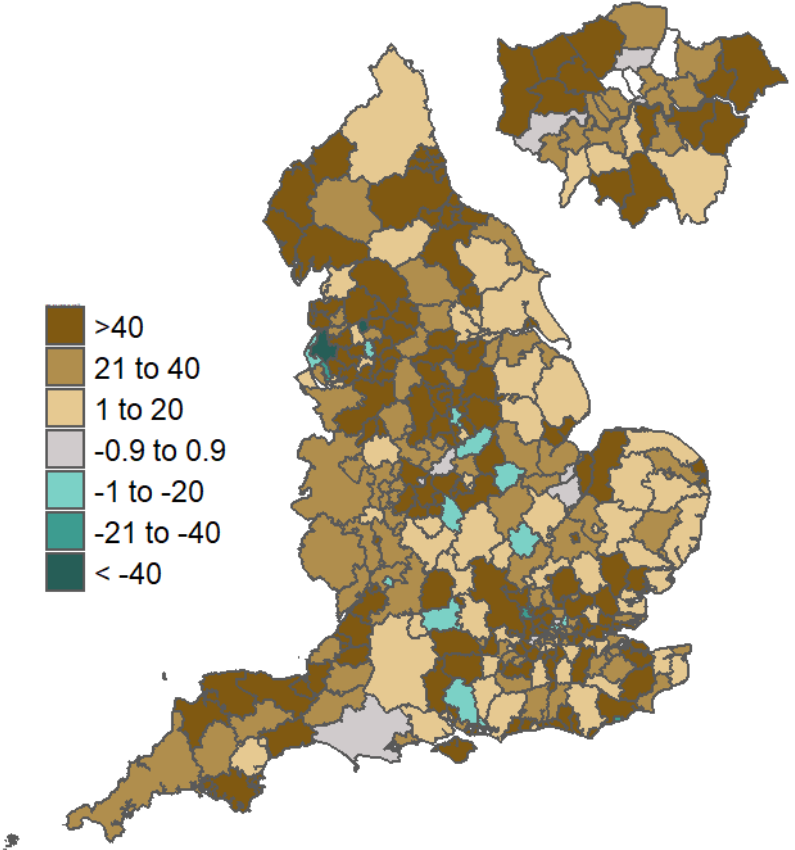
Data from SGSS; Pillar 1 and 2 testing. Figure by Outbreak Surveillance Team, Public Health England. Contains National Statistics data including 2019 population estimates. Crown copyright and database right 2021

Case Rates - Geographical spread of COVID-19 in England (aged 60+ years)

Weekly case rates per 100,000 population
by local authority
09 Jul to 15 Jul 2021



Absolute case rate change per 100,000 population
by local authority
02 Jul to 08 Jul 2021 and 09 Jul to 15 Jul 2021



Data from SGSS; Pillar 1 and 2 testing. Figure by Outbreak Surveillance Team, Public Health England. Contains National Statistics data including 2019 population estimates. Crown copyright and database right 2021

High level summary 1 - PHE regions

All indicators for the last 7 days (09 July 2021 to 15 July 2021)

Region	Individuals tested per day per 100,000 population		Percentage individuals test positive		Number of LTLAs by percentage individuals test positive RAG status			Percentage individual cases reporting symptoms		Case rate per 100,000 population, all ages		Number of LTLAs by case rate per 100,000 RAG status		Case rate per 100,000 population aged 60 years and over		Case rate per 100,000 population aged 11-16yrs		Case rate per 100,000 population aged 17-21yrs		Community outbreaks	Newly confirmed cases	Specimens tested with TaqPath assay	Cases with SGTF	
	7-day moving average	7-day change, %	Weekly	7-day change, %	R	A	G	Weekly, Pillar 2 only	7-day change, %	Weekly	7-day change, %	R	A	G	Weekly	7-day change, %	Weekly	7-day change, %	Weekly	7-day change, %	Last 7 days	Last 7 days	Last 7 days, %	Last 7 days, %
East Midlands	519.3	+2.1%	11.9%	+46.9%	33	2	0			442.4	+52.7%	35	0	0	80.3	+69.8%	921.8	+36.5%	1072.1	+24.6%			53.4%	0.1%
East of England	587.2	+2.1%	8.9%	+58.9%	32	13	1			377.1	+65.0%	46	0	0	69.2	+86.0%	661.6	+49.5%	1274.7	+53.4%			51.5%	0.2%
London	640.1	-0.9%	8.2%	+39.0%	22	10	1			378.5	+43.0%	33	0	0	89.9	+63.8%	527.4	+41.8%	717.1	+19.1%			26.2%	0.1%
North East	769.8	-1.6%	17.8%	+24.5%	12	0	0			959.3	+23.5%	12	0	0	249.3	+48.0%	1677.9	+25.4%	2097.9	-2.9%			75.7%	0.0%
North West	631.4	-3.2%	12.6%	+26.0%	39	0	0			555.1	+23.4%	39	0	0	137.1	+36.0%	1023.4	+15.4%	1260.9	+22.2%			55.2%	0.1%
South East	603.9	-1.9%	8.4%	+55.6%	38	24	1			367.4	+58.0%	63	0	0	71.6	+79.0%	616.1	+55.0%	1084.9	+29.5%			28.7%	0.1%
South West	635.0	+0.6%	9.8%	+66.1%	23	6	1			442.9	+70.3%	29	1	0	77.1	+78.5%	767.9	+68.1%	1321.7	+44.7%			10.8%	0.1%
West Midlands	565.8	-0.2%	12.1%	+45.8%	29	1	0			494.6	+50.1%	30	0	0	97.9	+66.8%	974.1	+42.4%	1200.6	+33.2%			54.1%	0.1%
Yorkshire and Humber	573.8	+1.1%	14.4%	+30.9%	21	0	0			582.4	+33.9%	21	0	0	123.0	+50.9%	1131.7	+20.8%	1395.9	+24.1%			52.6%	0.1%
England	628.4	-0.5%	10.6%	+39.5%	249	56	4			473.5	+43.2%	308	1	0	101.1	+58.7%	841.6	+35.7%	1198.8	+26.5%		266,515	40.7%	0.1%

High level summary data definitions

Weekly case rate	Total number of newly confirmed cases in the most recent 7 day period per 100,000 population
Individuals tested per day per 100,000 (7-dma)	7-day moving average number of individuals tested per 100,000 population per day
Weekly percentage individuals test positive	Percentage of all individuals tested with specimen dates in the most recent 7 day period test positive for SARS CoV-2
Community outbreaks	Number of outbreaks reported to PHE during the 7 day period, excluding those reported from secondary healthcare and care home settings.

Data for positive cases with specimen dates between 09 July 2021 and 15 July 2021

7-day change % demonstrates how figures compare to the equivalent figure as of 08 July 2021

The proportion of samples tested with a TaqPath assay is low in some regions and LTLAs which increases uncertainty around the % of cases with SGTF. In addition, local trends in these data may be affected by decisions to direct the processing of samples via a TaqPath laboratory.

RAG rating thresholds

Percentage positive	Red >7.5%, Amber >4 to 7.5%
All cases / 11-16 / 17-21 year olds weekly case rate	Maroon >250 cases per week, Dark Red > 150 cases per week, Red >50 cases per 100,000 per week, Amber >25 per 100,000 per week
Age 60+ cases weekly case rate	Maroon >150 cases per week, Dark Red > 100 cases per week, Red >50 cases per 100,000 per week, Amber >25 per 100,000 per week
7-day change, %	Maroon > +100%, Dark Red > +50%, Red > +10%, Amber > -10%, Green < -10%

High level summary 2 - 20 Highest LTLAs by case rate

All indicators for the last 7 days (09 July 2021 to 15 July 2021)

Region	LTLA	Individuals tested per day per 100,000 population		Percentage individuals test positive		Percentage individual cases reporting symptoms		Case rate per 100,000 population, all ages			Case rate per 100,000 population aged 60 years and over		Case rate per 100,000 population aged 11-16yrs		Case rate per 100,000 population aged 17-21yrs		Community outbreaks	Newly confirmed cases	Specimens tested with TaqPath assay	Cases with SGTF
		7-day moving average	7-day change, %	Weekly change, %	7-day change, %	Weekly, Pillar 2 only	7-day change, %	Weekly	3 week trend	7-day change, %	Weekly	7-day change, %	Weekly	7-day change, %	Weekly	7-day change, %	Last 7 days	Last 7 days	Last 7 days, %	Last 7 days, %
North East	Redcar and Cleveland	851.7	+27.0%	23.6%	+61.6%			1421.8		+107.2%	234.6	+135.1%	2903.3	+119.7%	4400.2	+73.1%			77.4%	0.0%
North East	Middlesbrough	872.3	+16.9%	21.0%	+41.9%			1281.0		+62.9%	387.8	+89.1%	1739.0	+27.5%	2720.4	+44.4%			75.4%	0.0%
North East	South Tyneside	838.5	-8.0%	21.1%	-0.5%			1206.8		-11.6%	399.7	+50.9%	2166.9	+13.8%	2787.1	-37.9%			75.0%	0.0%
North East	Sunderland	812.0	-2.5%	19.4%	+26.8%			1100.4		+22.9%	339.3	+60.0%	1782.1	+21.4%	2527.3	-7.9%			74.8%	0.0%
North East	Hartlepool	697.3	+4.6%	21.7%	+14.2%			1081.5		+23.1%	265.2	+28.0%	1673.6	+19.1%	2922.7	+9.9%			87.3%	0.0%
North East	Stockton-on-Tees	725.8	+13.4%	20.7%	+51.1%			1073.2		+75.2%	254.2	+112.0%	1678.8	+60.5%	3780.4	+63.9%			83.1%	0.2%
Yorkshire and Humber	North East Lincolnshire	645.1	-3.1%	22.1%	+10.0%			1013.4		+8.4%	180.6	+13.2%	1663.4	-5.1%	2851.2	+3.3%			62.0%	0.0%
North East	Gateshead	785.9	-4.2%	17.7%	+12.0%			959.1		+7.7%	310.4	+25.8%	1794.4	+50.7%	1800.9	-25.3%			72.8%	0.2%
North West	Copeland	961.1	+7.1%	13.8%	+97.1%			931.3		+113.1%	156.4	+128.7%	1560.3	+83.8%	3737.7	+86.9%			71.3%	0.0%
North East	Darlington	746.4	+3.3%	17.7%	+47.5%			930.7		+54.3%	161.2	+58.7%	1448.5	+65.7%	2516.7	+2.4%			72.5%	0.0%
North East	Newcastle upon Tyne	802.1	-5.9%	16.0%	+11.1%			878.7		+5.5%	297.0	+51.3%	1529.7	-7.3%	950.5	-17.1%			73.7%	0.0%
West Midlands	Solihull	642.8	+3.8%	17.7%	+59.5%			829.1		+74.8%	173.1	+85.1%	1873.6	+84.2%	2091.5	+57.1%			54.8%	0.0%
West Midlands	North Warwickshire	709.0	+3.0%	16.3%	+32.5%			822.8		+37.3%	195.0	+124.9%	1877.9	+60.0%	2272.0	+13.1%			69.4%	0.0%
North East	County Durham	726.6	-8.5%	16.3%	+22.6%			818.3		+11.0%	220.2	+30.8%	1427.9	+5.7%	1806.7	-16.9%			77.8%	0.0%
Yorkshire and Humber	Doncaster	649.3	+6.8%	17.4%	+34.9%			794.2		+42.4%	159.8	+93.9%	1500.0	+25.2%	2294.4	+21.4%			47.0%	0.0%
North East	North Tyneside	735.1	-12.6%	14.9%	+19.2%			780.6		+8.5%	193.3	+46.6%	1129.5	-23.2%	2105.3	-2.5%			72.1%	0.0%
Yorkshire and Humber	Barnsley	576.2	-5.7%	19.3%	+15.6%			776.9		+8.9%	209.1	+44.6%	1401.1	-23.6%	1715.5	-22.6%			53.6%	0.1%
South West	Plymouth	858.3	+18.8%	12.7%	+71.6%			773.8		+103.0%	131.6	+59.7%	1328.1	+221.7%	1808.3	+21.9%			7.2%	0.0%
South West	Bristol, City of	792.0	-0.2%	14.1%	+41.0%			771.5		+40.6%	129.9	+66.1%	1350.0	+19.3%	1249.6	+25.5%			8.1%	0.0%
East Midlands	Bassetlaw	621.3	+9.3%	16.4%	+84.3%			749.2		+110.5%	109.8	+208.4%	1571.4	+41.9%	3442.7	+150.0%			49.0%	0.1%
	England	628.4	-0.5%	10.6%	+39.5%			473.5		+43.2%	101.1	+58.7%	841.6	+35.7%	1198.8	+26.5%		266,515	40.7%	0.1%

High level summary 3 - 20 Highest LTLAs not included in summary table 2 where the weekly case rate change - all ages has risen >10% from the previous week

All indicators for the last 7 days (09 July 2021 to 15 July 2021)

Region	LTLA	Individuals tested per day per 100,000 population		Percentage individuals test positive		Percentage individual cases reporting symptoms		Case rate per 100,000 population, all ages			Case rate per 100,000 population aged 60 years and over		Case rate per 100,000 population aged 11-16yrs		Case rate per 100,000 population aged 17-21yrs		Community outbreaks Last 7 days	Newly confirmed cases Last 7 days	Specimens tested with TaqPath assay Last 7 days, %	Cases with SGTf
		7-day moving average	7-day change, %	Weekly	7-day change, %	Weekly, Pillar 2 only	7-day change, %	Weekly	3 week trend	7-day change, %	Weekly	7-day change, %	Weekly	7-day change, %	Weekly	7-day change, %				
East of England	Castle Point	565.9	+29.4%	15.9%	+140.9%			642.9		+186.2%	157.4	+349.7%	1340.7	+321.1%	2387.4	+241.9%			53.7%	0.0%
East Midlands	Newark and Sherwood	563.5	+14.4%	15.8%	+ 64.6%			651.8		+ 95.6%	168.2	+195.1%	1440.1	+ 71.0%	2106.0	+143.1%			60.4%	0.0%
South West	Bath and North East Somerset	680.9	+ 9.3%	13.6%	+ 70.0%			650.9		+ 87.5%	134.7	+103.2%	1147.1	+101.4%	1250.1	+ 69.1%			7.9%	0.0%
South West	South Gloucestershire	698.3	+ 3.1%	14.7%	+ 63.3%			717.7		+ 72.8%	120.7	+112.9%	806.5	+ 30.5%	2162.3	+ 58.7%			6.2%	0.0%
North West	Fylde	904.2	+24.5%	11.0%	+ 32.5%			698.2		+ 65.4%	153.3	+ 48.3%	1618.6	+ 67.3%	2728.6	+ 78.4%			48.7%	0.0%
North West	Allerdale	863.0	-7.4%	12.5%	+ 81.2%			748.8		+ 64.5%	164.7	+183.5%	1049.6	+103.1%	2676.6	+ 0.8%			73.0%	0.0%
West Midlands	Worcester	622.1	+ 2.7%	14.9%	+ 47.5%			685.6		+ 62.9%	92.0	+110.0%	1571.1	+ 21.8%	1921.5	+ 27.3%			57.2%	0.0%
East Midlands	Erewash	593.7	+11.7%	15.2%	+ 40.7%			644.9		+ 59.7%	108.3	+ 94.1%	1559.2	+ 25.3%	1270.3	+ 1.5%			66.1%	0.0%
North West	Wyre	785.8	+ 4.6%	12.7%	+ 42.7%			700.3		+ 49.8%	161.8	+162.7%	1070.8	+ 5.5%	2578.2	+ 41.1%			49.8%	0.1%
East Midlands	Gedling	539.1	+ 7.4%	18.6%	+ 38.8%			693.8		+ 48.4%	103.4	+ 73.5%	1544.5	+ 21.8%	2093.8	+ 40.0%			64.1%	0.0%
East Midlands	Rushcliffe	623.8	+ 8.7%	15.3%	+ 34.2%			662.8		+ 42.6%	59.1	-9.5%	1547.6	+ 47.8%	1918.3	+ 8.1%			61.5%	0.0%
North West	Wigan	596.8	-2.0%	17.5%	+ 35.7%			740.0		+ 38.0%	172.8	+ 39.6%	1275.1	+ 16.2%	2006.9	+ 16.6%			50.9%	0.0%
North West	Carlisle	646.5	-3.6%	15.5%	+ 42.2%			692.9		+ 37.2%	122.3	+100.2%	1344.3	+ 53.2%	2571.3	-3.5%			66.0%	0.0%
North West	Blackpool	879.0	+ 3.9%	12.0%	+ 29.0%			739.4		+ 34.1%	134.1	+108.2%	1057.6	-1.0%	2188.7	+113.5%			42.3%	0.0%
North East	Northumberland	730.2	-0.4%	13.7%	+ 29.2%			711.5		+ 31.8%	122.1	+ 8.5%	1697.8	+ 67.5%	1981.4	-10.4%			72.4%	0.0%
North West	Rochdale	650.4	-6.7%	15.3%	+ 28.6%			693.3		+ 20.7%	188.5	+ 39.3%	1037.9	-24.1%	1316.3	+ 7.4%			65.3%	0.0%
North West	Oldham	590.7	-3.0%	18.1%	+ 19.1%			746.5		+ 19.0%	254.1	+ 82.8%	1130.4	-13.7%	1538.4	+ 52.8%			63.0%	0.3%
North West	Salford	661.4	+ 1.1%	13.4%	+ 12.6%			630.5		+ 18.7%	145.7	+ 6.0%	960.4	+ 12.2%	1040.0	+ 43.3%			50.2%	0.0%
Yorkshire and Humber	Wakefield	605.4	-2.4%	16.4%	+ 18.8%			709.7		+ 17.7%	165.3	+ 67.5%	1258.5	-9.3%	2187.2	+ 5.4%			58.6%	0.0%
Yorkshire and Humber	Leeds	610.6	-2.8%	14.8%	+ 17.5%			631.4		+ 15.5%	147.2	+ 26.0%	1337.2	+ 6.5%	952.4	-0.6%			53.1%	0.1%
	England	628.4	-0.5%	10.6%	+ 39.5%			473.5		+ 43.2%	101.1	+ 58.7%	841.6	+ 35.7%	1198.8	+ 26.5%		266,515	40.7%	0.1%

High level summary 4 - 20 Highest LTLAs by case rate in individuals aged 60 years and over

All indicators for the last 7 days (09 July 2021 to 15 July 2021)

Region	LTLA	Individuals tested per day per 100,000 population		Percentage individuals test positive		Percentage individual cases reporting symptoms		Case rate per 100,000 population, all ages			Case rate per 100,000 population aged 60 years and over		Case rate per 100,000 population aged 11-16yrs		Case rate per 100,000 population aged 17-21yrs		Community outbreaks Last 7 days	Newly confirmed cases Last 7 days	Specimens tested with TaqPath assay Last 7 days, %	Cases with SGTF
		7-day moving average	7-day change, %	Weekly change, %	7-day change, %	Weekly, Pillar 2 only	7-day change, %	Weekly	3 week trend	7-day change, %	Weekly	7-day change, %	Weekly	7-day change, %	Weekly	7-day change, %				
North East	South Tyneside	838.5	-8.0%	21.1%	-0.5%			1206.8		-11.6%	399.7	+ 50.9%	2166.9	+ 13.8%	2787.1	-37.9%			75.0%	0.0%
North East	Middlesbrough	872.3	+16.9%	21.0%	+41.9%			1281.0		+ 62.9%	387.8	+ 89.1%	1739.0	+ 27.5%	2720.4	+ 44.4%			75.4%	0.0%
North East	Sunderland	812.0	-2.5%	19.4%	+26.8%			1100.4		+ 22.9%	339.3	+ 60.0%	1782.1	+ 21.4%	2527.3	-7.9%			74.8%	0.0%
North East	Gateshead	785.9	-4.2%	17.7%	+12.0%			959.1		+ 7.7%	310.4	+ 25.8%	1794.4	+ 50.7%	1800.9	-25.3%			72.8%	0.2%
North East	Newcastle upon Tyne	802.1	-5.9%	16.0%	+11.1%			878.7		+ 5.5%	297.0	+ 51.3%	1529.7	-7.3%	950.5	-17.1%			73.7%	0.0%
North East	Hartlepool	697.3	+ 4.6%	21.7%	+14.2%			1081.5		+ 23.1%	265.2	+ 28.0%	1673.6	+ 19.1%	2922.7	+ 9.9%			87.3%	0.0%
North East	Stockton-on-Tees	725.8	+13.4%	20.7%	+51.1%			1073.2		+ 75.2%	254.2	+112.0%	1678.8	+ 60.5%	3780.4	+ 63.9%			83.1%	0.2%
North West	Oldham	590.7	-3.0%	18.1%	+19.1%			746.5		+ 19.0%	254.1	+ 82.8%	1130.4	-13.7%	1538.4	+ 52.8%			63.0%	0.3%
North East	Redcar and Cleveland	851.7	+27.0%	23.6%	+61.6%			1421.8		+107.2%	234.6	+135.1%	2903.3	+119.7%	4400.2	+ 73.1%			77.4%	0.0%
North East	County Durham	726.6	-8.5%	16.3%	+22.6%			818.3		+ 11.0%	220.2	+ 30.8%	1427.9	+ 5.7%	1806.7	-16.9%			77.8%	0.0%
North West	Rossendale	634.9	-6.9%	14.8%	+ 2.8%			654.7		-2.7%	209.3	+ 15.6%	836.0	-46.3%	1869.2	-4.5%			58.3%	0.0%
Yorkshire and Humber	Barnsley	576.2	-5.7%	19.3%	+15.6%			776.9		+ 8.9%	209.1	+ 44.6%	1401.1	-23.6%	1715.5	-22.6%			53.6%	0.1%
North West	Burnley	608.7	-14.9%	13.2%	+32.0%			572.4		+ 15.1%	196.5	+ 65.4%	786.7	-11.9%	863.8	+ 8.3%			51.4%	0.0%
West Midlands	North Warwickshire	709.0	+ 3.0%	16.3%	+32.5%			822.8		+ 37.3%	195.0	+124.9%	1877.9	+ 60.0%	2272.0	+ 13.1%			69.4%	0.0%
North East	North Tyneside	735.1	-12.6%	14.9%	+19.2%			780.6		+ 8.5%	193.3	+ 46.6%	1129.5	-23.2%	2105.3	-2.5%			72.1%	0.0%
North West	Rochdale	650.4	-6.7%	15.3%	+28.6%			693.3		+ 20.7%	188.5	+ 39.3%	1037.9	-24.1%	1316.3	+ 7.4%			65.3%	0.0%
North West	Preston	648.6	+ 0.2%	10.4%	+38.7%			477.9		+ 41.3%	181.1	+ 18.6%	940.5	+ 95.9%	936.0	+146.4%			48.4%	0.2%
Yorkshire and Humber	North East Lincolnshire	645.1	-3.1%	22.1%	+10.0%			1013.4		+ 8.4%	180.6	+ 13.2%	1663.4	-5.1%	2851.2	+ 3.3%			62.0%	0.0%
West Midlands	Tamworth	640.7	-25.5%	16.3%	+39.3%			738.0		+ 6.2%	177.9	0.0%	1188.1	-5.8%	1597.8	-37.0%			59.4%	0.0%
North West	Manchester	655.3	-4.3%	12.4%	+12.7%			551.1		+ 10.4%	174.2	+ 31.9%	1042.0	+ 9.1%	641.9	+ 16.6%			59.1%	0.1%
	England	628.4	-0.5%	10.6%	+39.5%			473.5		+ 43.2%	101.1	+ 58.7%	841.6	+ 35.7%	1198.8	+ 26.5%		266,515	40.7%	0.1%

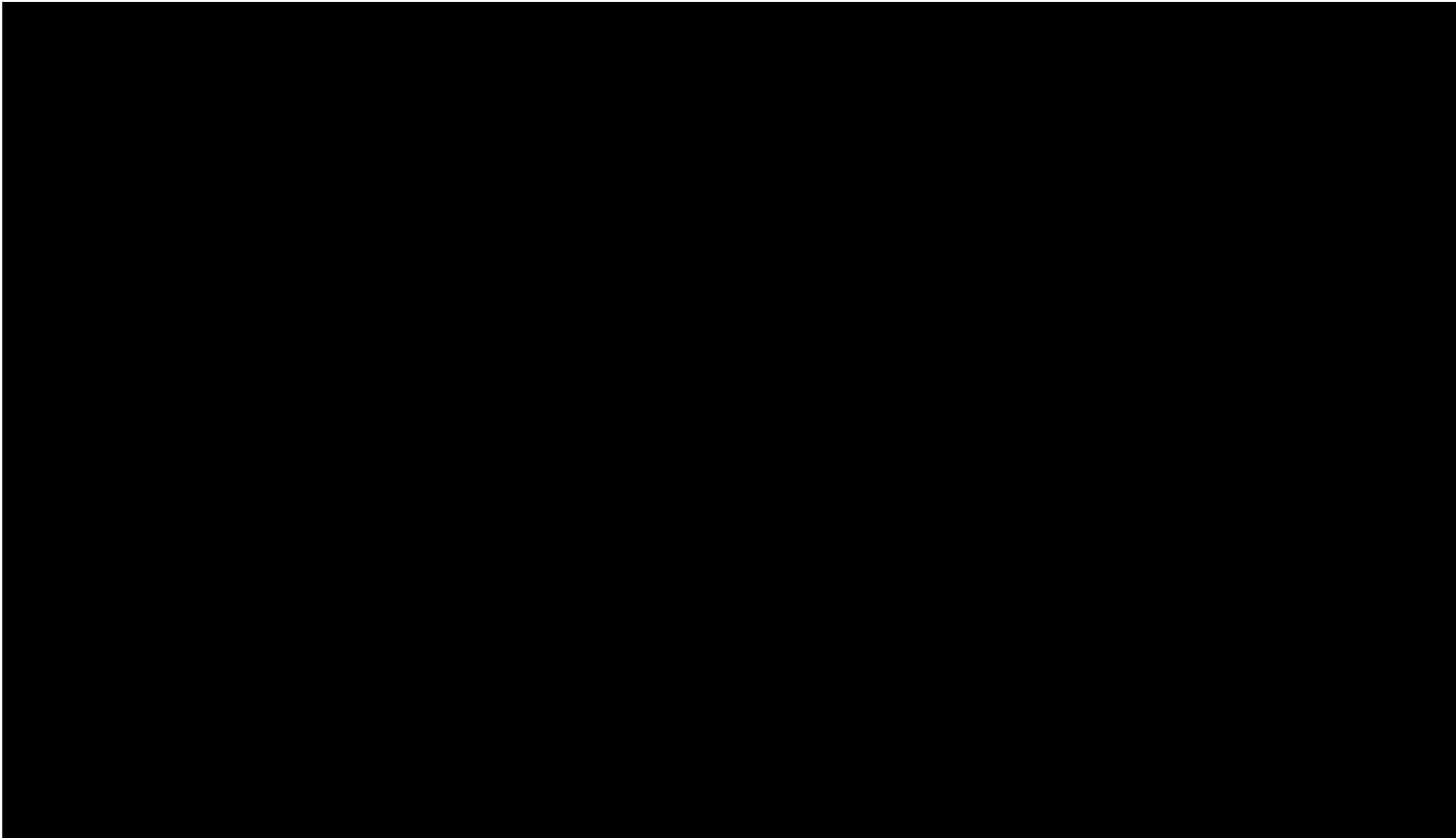
High level summary 5 – Hospital indicators - England

Hospital indicators: high-level summary by region

	New COVID-19 patients admitted to hospital			Number of COVID-19 patients in hospital			Mechanical ventilation beds occupied by COVID-19 patients		
	18 Jul 2021	7-day change	21-day trend	18 Jul 2021	7-day change	21-day trend	18 Jul 2021	7-day change	21-day trend
Total									
England		38.5%			38.0%			25.5%	
By region									
East Midlands		40.0%			52.6%			50.0%	
East of England		58.3%			73.5%			81.2%	
London		41.3%			22.1%			18.1%	
North East		44.8%			44.6%			22.2%	
North West		4.7%			12.5%			5.1%	
South East		52.6%			78.6%			72.2%	
South West		89.7%			72.5%			56.2%	
West Midlands		47.5%			44.8%			24.5%	
Yorkshire and The Humber		36.0%			54.9%			37.8%	

NOTE: All values are 7-day averages rounded up to the nearest whole number. As a result of rounding, there may be a small discrepancy between the regional sum and the total England value. Relative changes on small numbers can result in a large percentage change.

Source: NHS England & Improvement COVID-19 Hospital Activity Data, from 21 June 2021 to 18 July 2021. Values in parentheses are change from the previous day. All values are 7-day averages, i.e. mean averages of daily values from the 7 days up to and including the date in the column heading; totals are presented as integers, which may lead to small discrepancies due to rounding. The '7-day change' columns reflect the difference in 7-day average values compared to the value one week prior. Scale within each 'trend' column is consistent across all regions, except for the total row, which is scaled independently. Produced by Joint Biosecurity Centre.



High level summary - COVID-19 vaccination uptake by region, age and dose

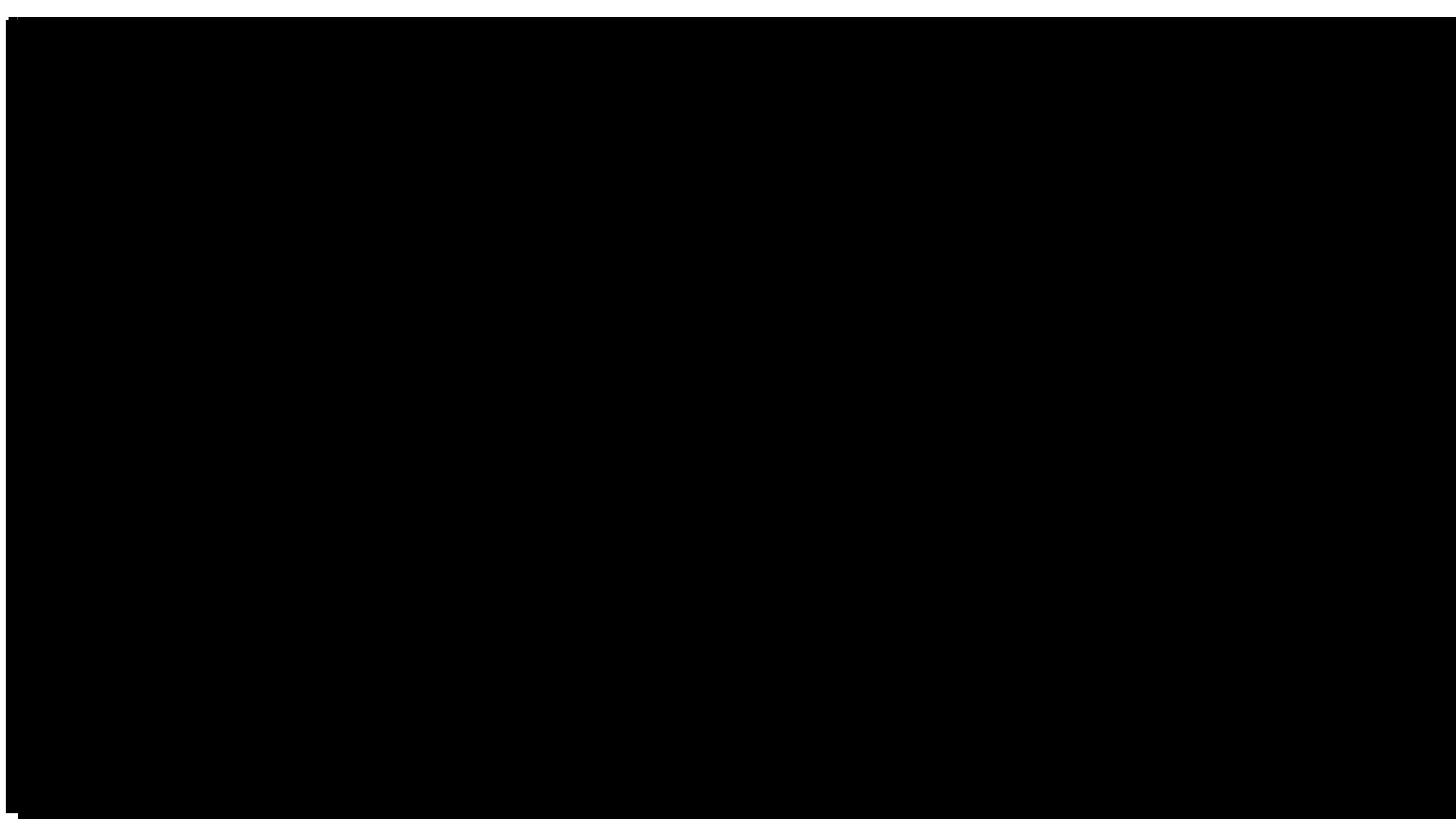
Data to 20 July 2021

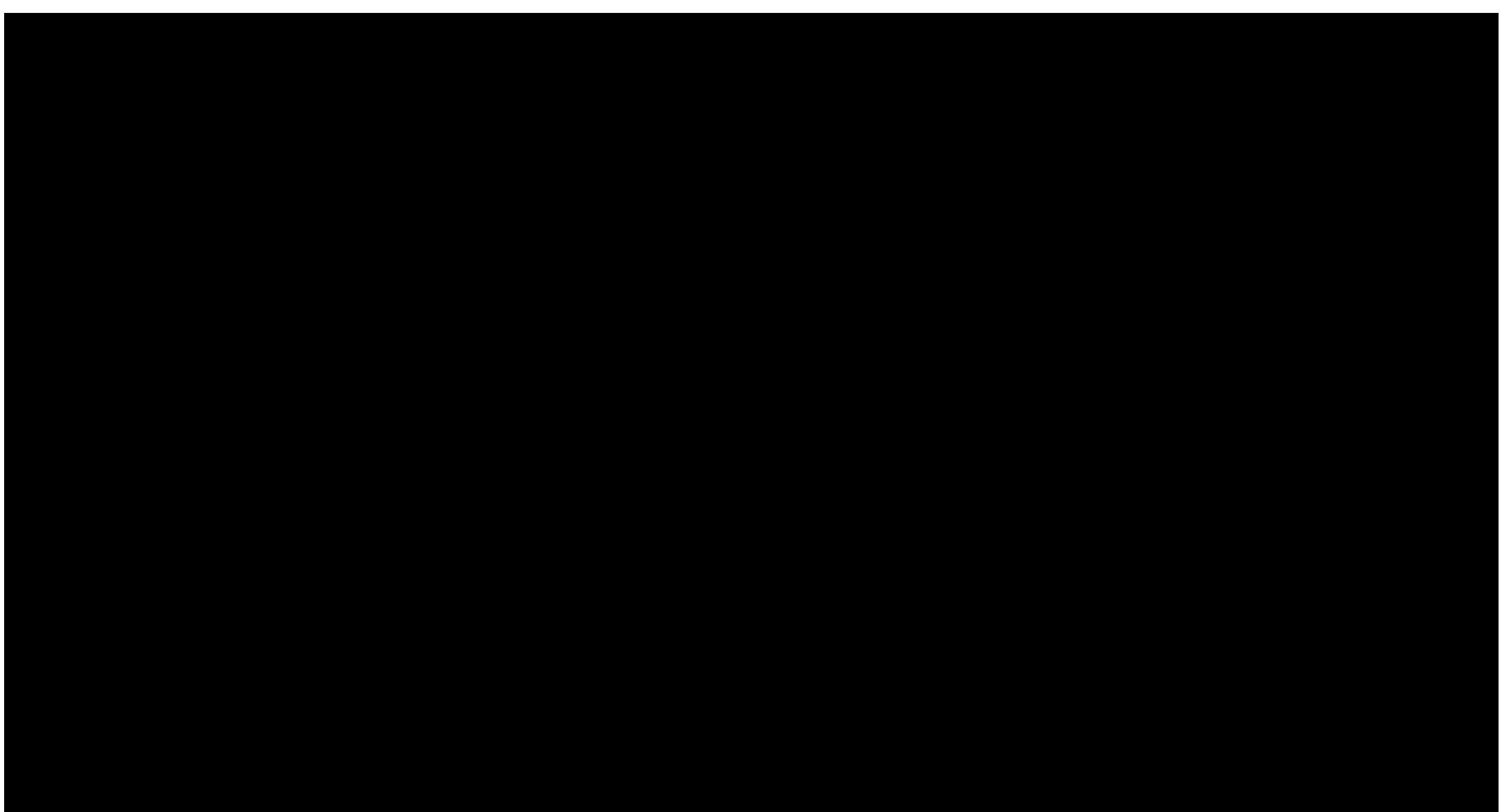
PHE Region of Residence	Dose 1				Dose 2			
	All persons	ESR NHS Workers	CEV	COVID19 At Risk	All persons	ESR NHS Workers	CEV	COVID19 At Risk
East Midlands	64.9% (0.4)	92.4% (0.2)	93.2% (0.1)	87.7% (0.2)	51.6% (1.4)	86.8% (0.5)	89.7% (0.2)	81.8% (0.5)
East of England	64.3% (0.5)	92.1% (0.2)	93.5% (0.1)	88.1% (0.2)	50.5% (1.7)	86.1% (0.5)	90.4% (0.2)	82.3% (0.5)
London	52.2% (0.6)	84.5% (0.3)	83.9% (0.2)	76.1% (0.3)	37.2% (1.7)	76.8% (0.7)	78.3% (0.4)	68.1% (0.6)
North East	66.5% (0.6)	94.6% (0.2)	94.8% (0.1)	89.0% (0.3)	52.7% (1.3)	90.1% (0.6)	91.6% (0.2)	82.5% (0.3)
North West	62.6% (0.4)	91.3% (0.2)	92.4% (0.1)	85.1% (0.2)	50.0% (1.6)	86.0% (0.7)	88.1% (0.3)	77.7% (0.5)
South East	65.5% (0.6)	93.0% (0.2)	94.2% (0.1)	88.6% (0.3)	51.2% (1.8)	87.2% (0.6)	91.0% (0.2)	82.6% (0.6)
South West	68.5% (0.6)	93.4% (0.3)	95.0% (0.1)	89.6% (0.2)	53.7% (1.5)	87.6% (0.5)	92.4% (0.2)	84.2% (0.5)
West Midlands	61.3% (0.5)	89.4% (0.2)	90.8% (0.1)	84.7% (0.3)	48.3% (1.4)	83.3% (0.6)	86.8% (0.2)	77.8% (0.5)
Yorkshire and Humber	63.6% (0.5)	92.3% (0.2)	92.6% (0.1)	86.7% (0.3)	50.6% (1.5)	86.8% (0.6)	88.9% (0.2)	80.2% (0.5)
Unknown	44.3% (1.0)	87.0% (0.4)	79.3% (0.2)	74.4% (0.3)	25.2% (1.3)	68.6% (0.7)	70.4% (0.3)	63.1% (0.4)
Total	62.3% (0.5)	91.0% (0.2)	91.6% (0.1)	85.8% (0.3)	48.5% (1.6)	85.0% (0.6)	87.7% (0.3)	79.3% (0.5)

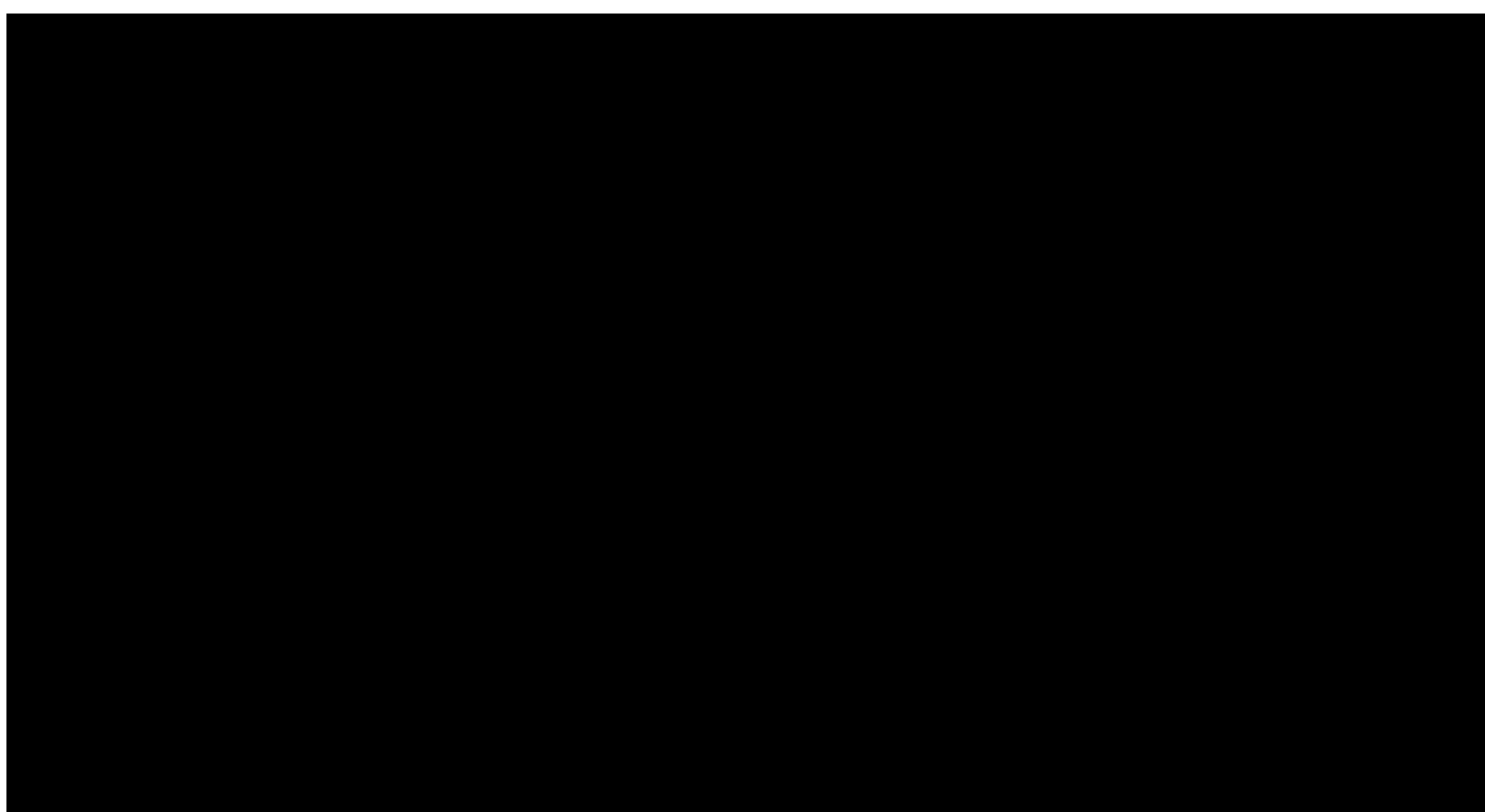
Values in parentheses show absolute percentage change since 13 July 2021. ESR = electronic staff record; CEV = clinically extremely vulnerable. Please refer to the vaccination data guidance notes and caveats slides for further information.

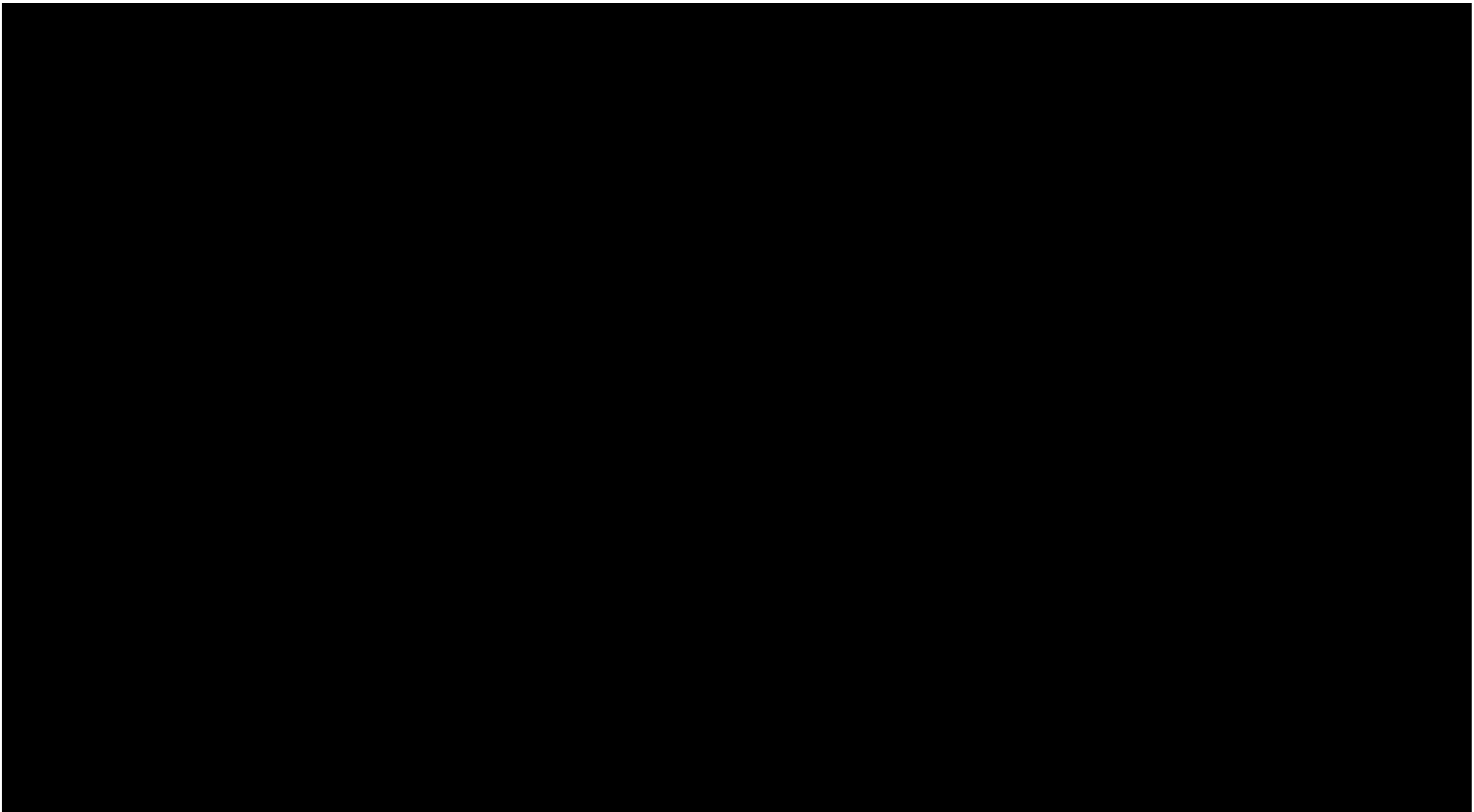
Data Source: National Immunisation Management Service (NIMS)

Note: NIMS denominators include all persons and are not restricted to adults aged 18 years and above







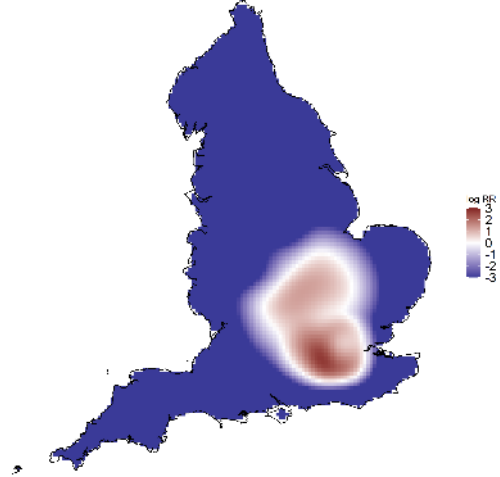




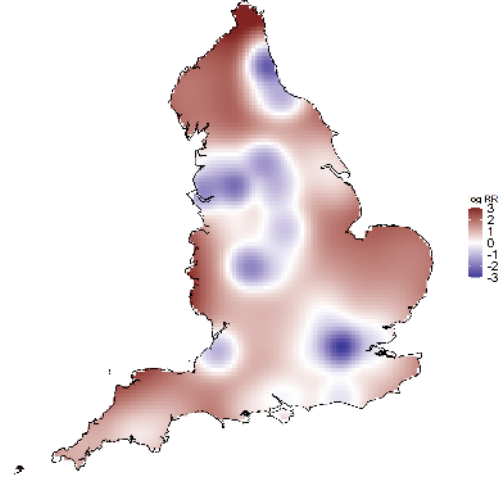
Relative risk of having variant when infected in England by variant type

Data from 27 June 2021 to 17 July 2021

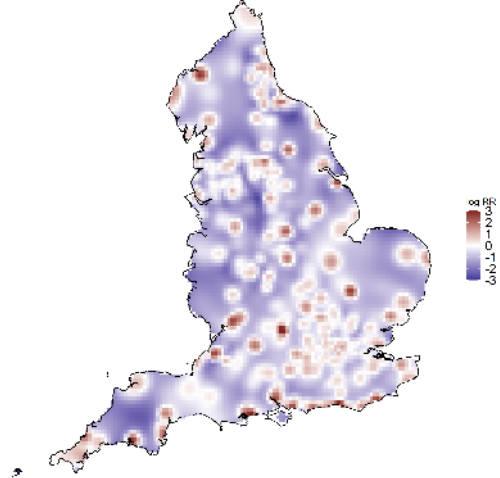
BETA (VOC-20DEC-02)



GAMMA (VOC-21JAN-02)



DELTA (VOC-21APR-02)



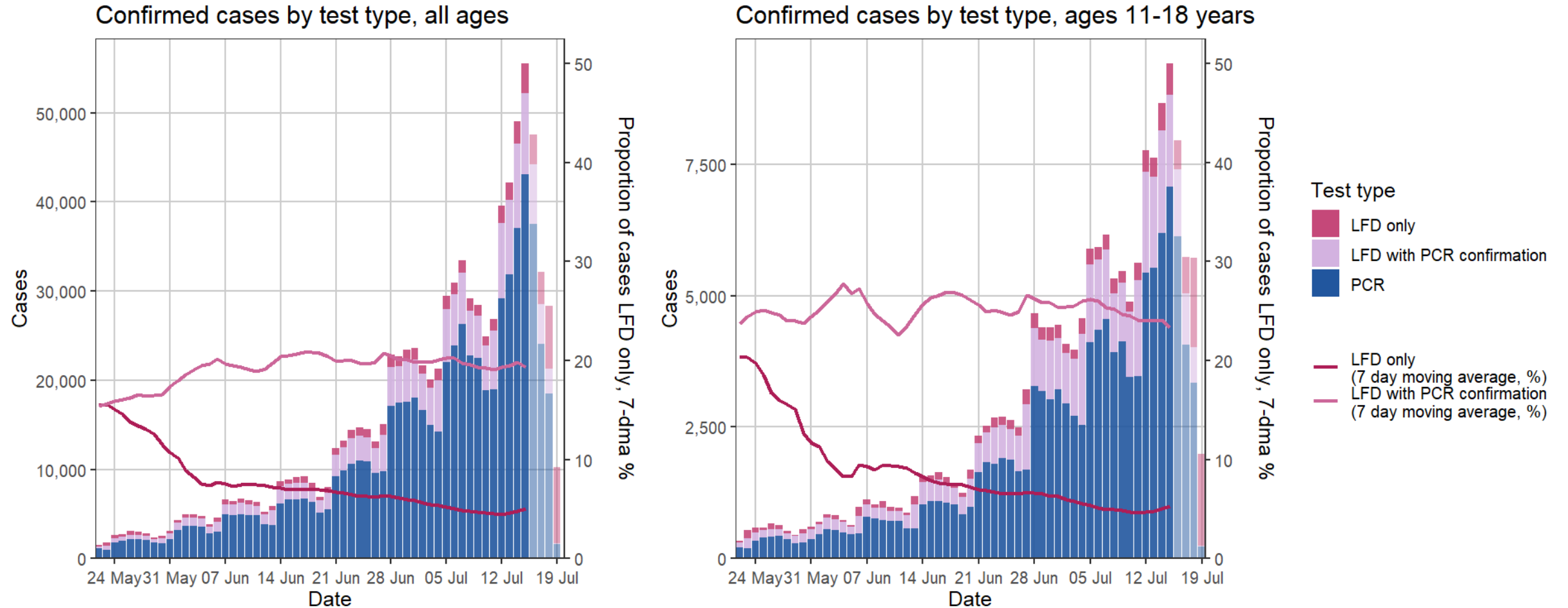
Areas where higher risk of a variant outcome is statistically significant (with 99% confidence) are shown by red contour lines. The spatial risk surface is estimated by comparing the smoothed intensity of variant cases and all cases as controls in the last 21 days across a defined geographical area to produce an intensity (or risk) ratio. If the ratio is ~ 1 , this suggests that the risk of a variant outcome is unrelated to spatial location. Evidence of spatial variation in risk occurs where the intensities differ.

Ratio values > 1 (red) indicate an increased risk and values < 1 (blue) indicate lower risk. Relative risk was smoothed using an fixed bandwidth.

Data source: Genomically confirmed, genomically provisional and provisional genotyping cases with no known travel association from National VAM line list as of 18/07/2021 - maps are only shown for variants with cases in the 21 day period.

Case numbers by test type in England

Data reporting 22 May 2021 to 19 July 2021



Data for the four most recent specimen dates is incomplete and will include cases for which PCR testing has not yet been reported and/or undertaken

PCR = First positive specimen was a PCR test.

LFD with PCR confirmation = Positive LFD with a positive PCR result within 3 days.

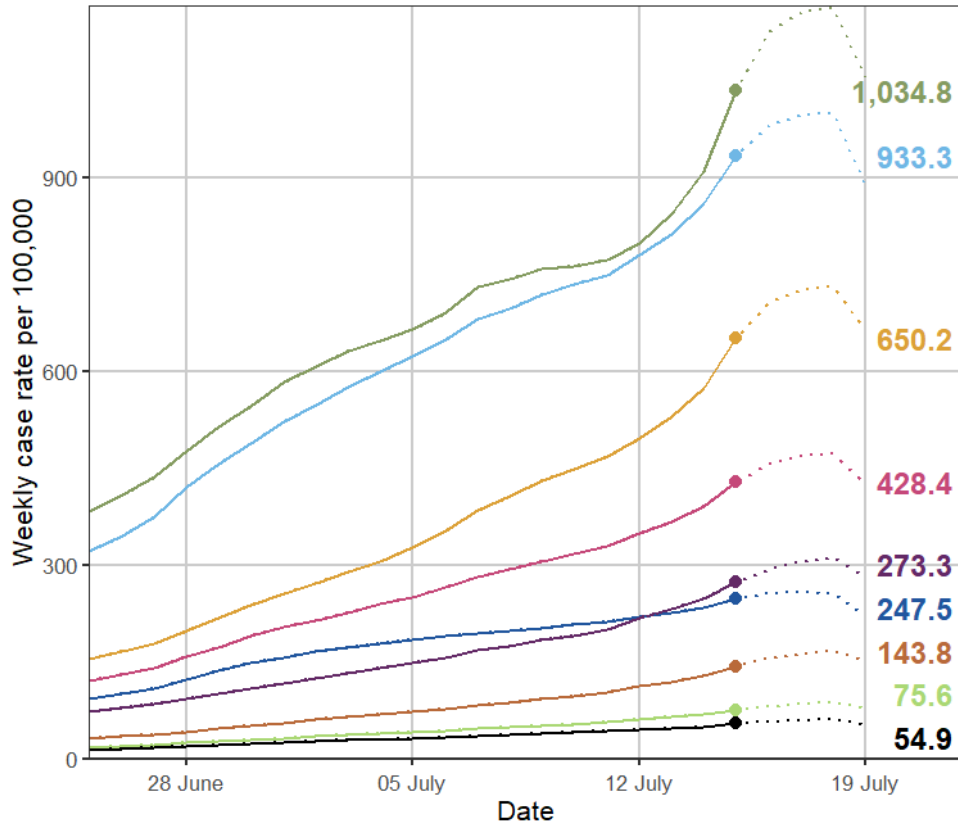
LFD only = Positive LFD with no PCR results within 3 days.

Data source: SGSS

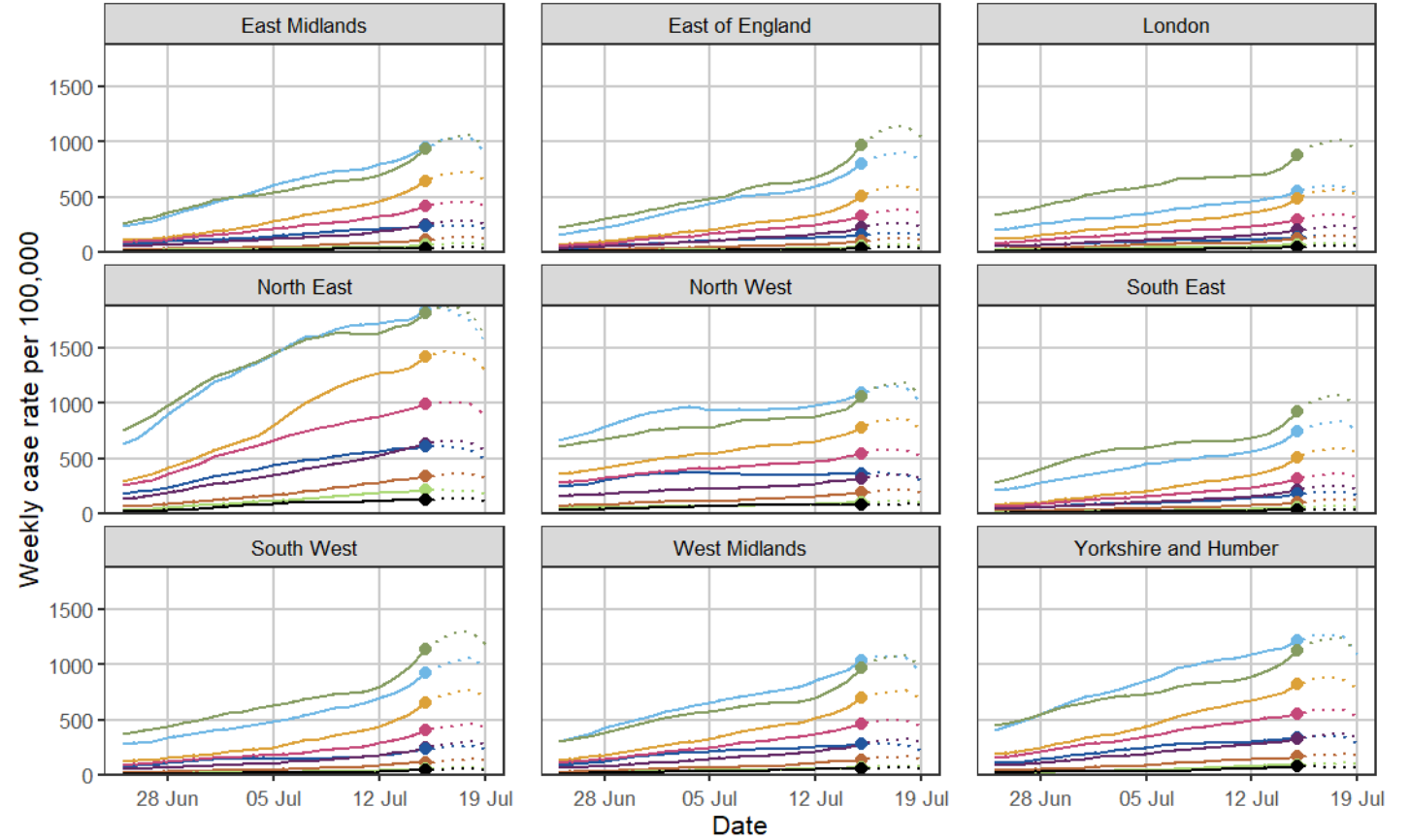
Case rate in England across both pillars 1 and 2 (weekly)

Data up to 15 July 2021

Weekly case rate per 100,000 population by age group



Weekly case rate per 100,000 population by age group



Age group, yrs

- 0-9
- 20-29
- 40-49
- 60-69
- 80+
- 10-19
- 30-39
- 50-59
- 70-79

Labels show weekly case rate for 09 July 2021 to 15 July 2021
Dashed lines indicate period with provisional data

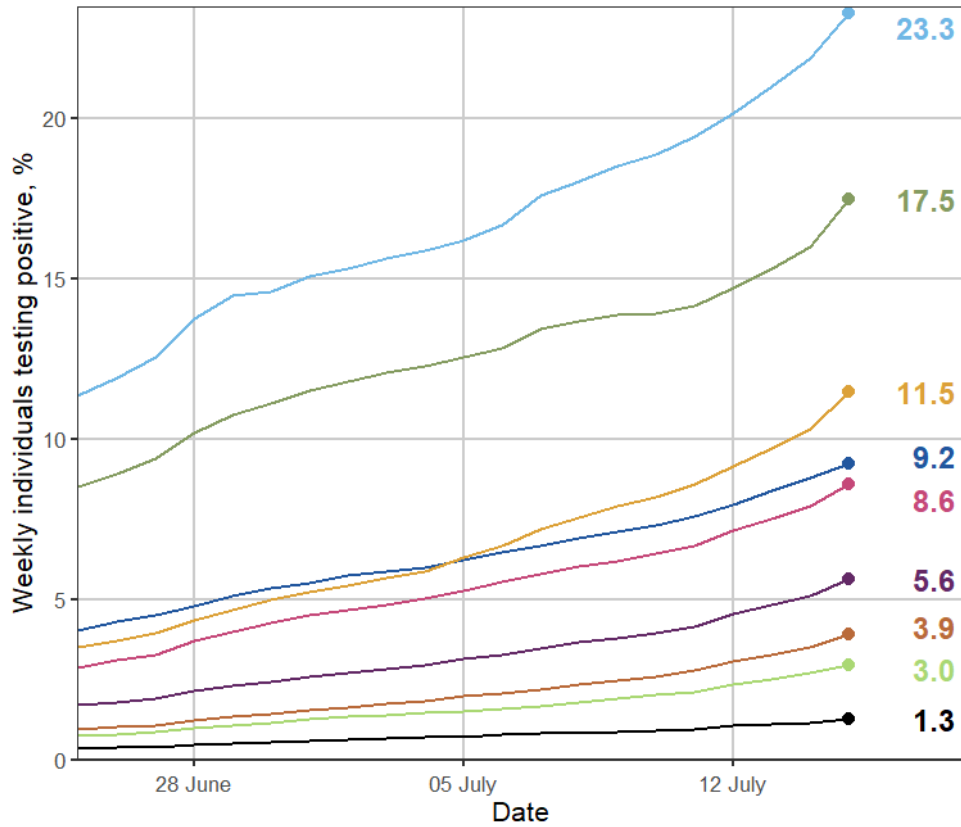
Dashed lines indicate period with provisional data



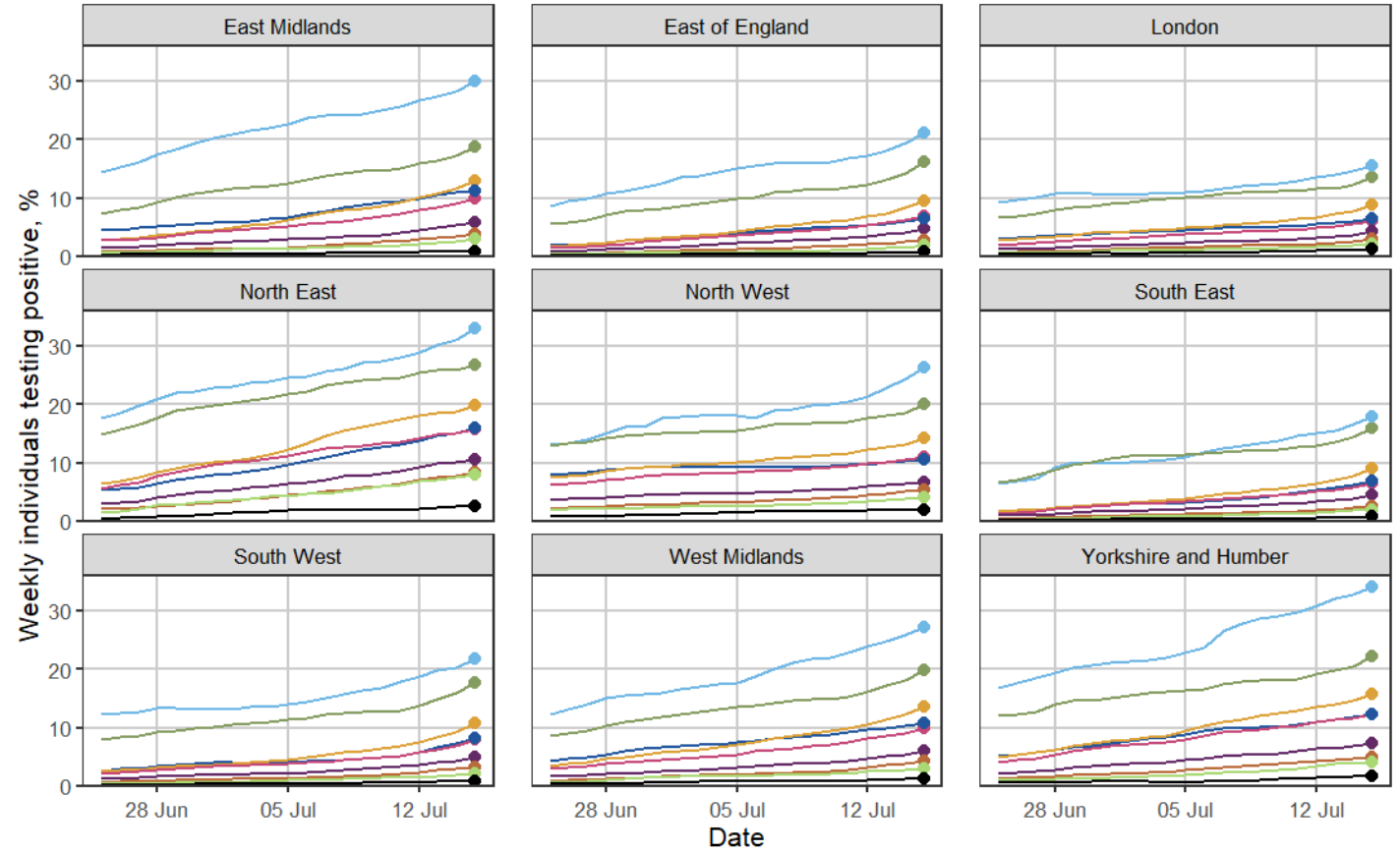
Percentage of individuals testing positive in England across both pillars 1 and 2 (weekly)

Data up to 15 July 2021

Weekly individual test positivity, %, by age group



Weekly individual test positivity, %, by age group



Age group, yrs

- 0-9
- 10-19
- 20-29
- 30-39
- 40-49
- 50-59
- 60-69
- 70-79
- 80+

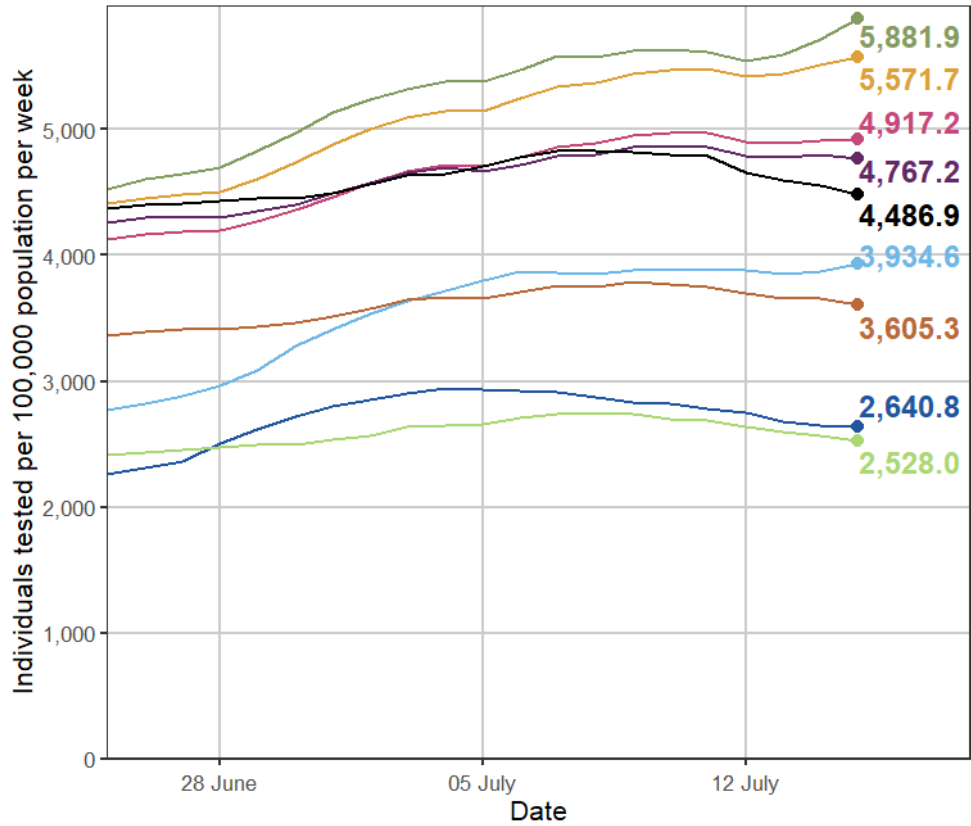
Labels show positivity rate for 09 July 2021 to 15 July 2021.
Excludes LFD tests

Excludes LFD tests

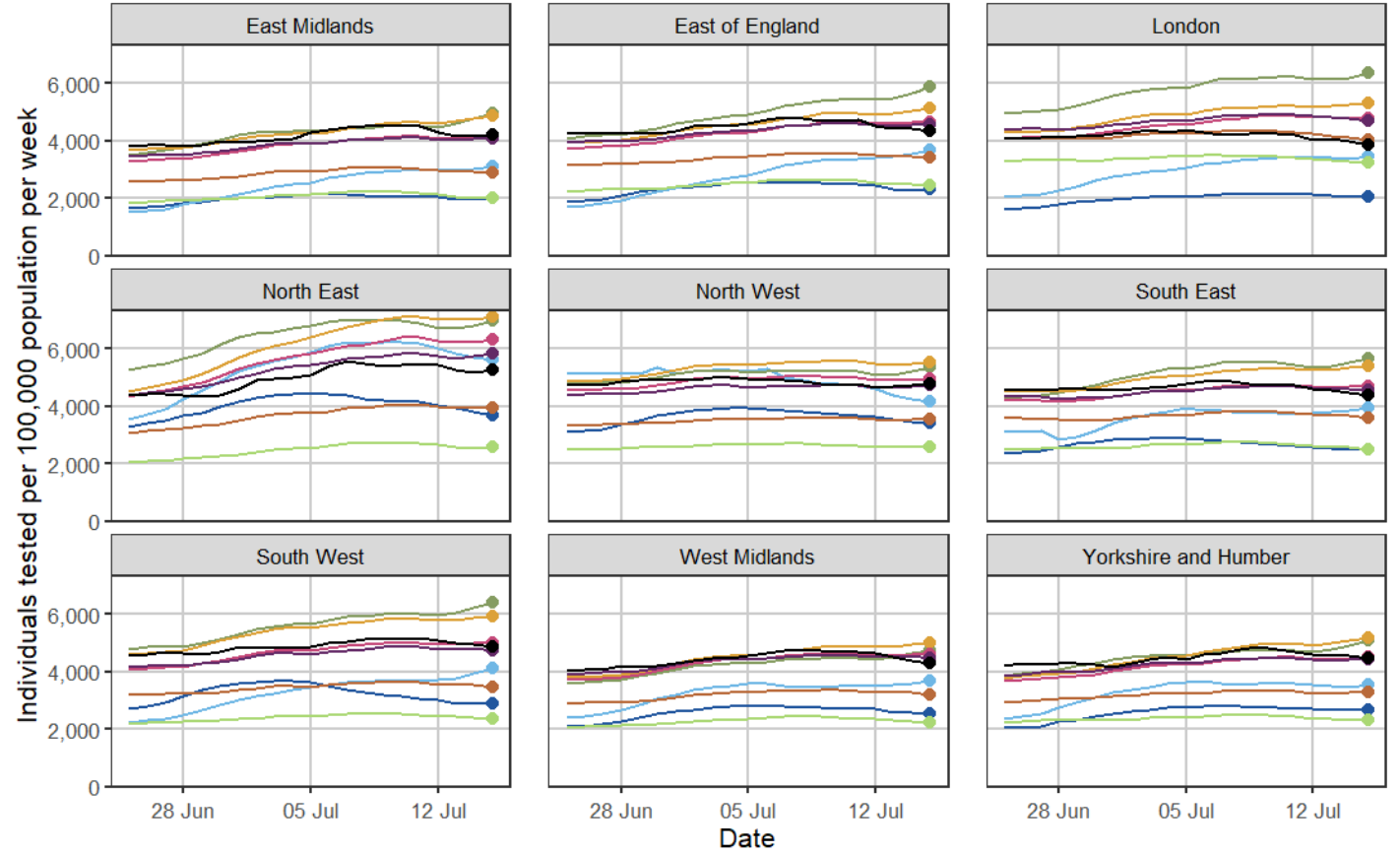
Individuals tested in England across both pillars 1 and 2 (weekly)

Data up to 15 July 2021

Individuals tested per 100,000 population



Individuals tested per 100,000 population



Age group, yrs

- 0-9
- 10-19
- 20-29
- 30-39
- 40-49
- 50-59
- 60-69
- 70-79
- 80+

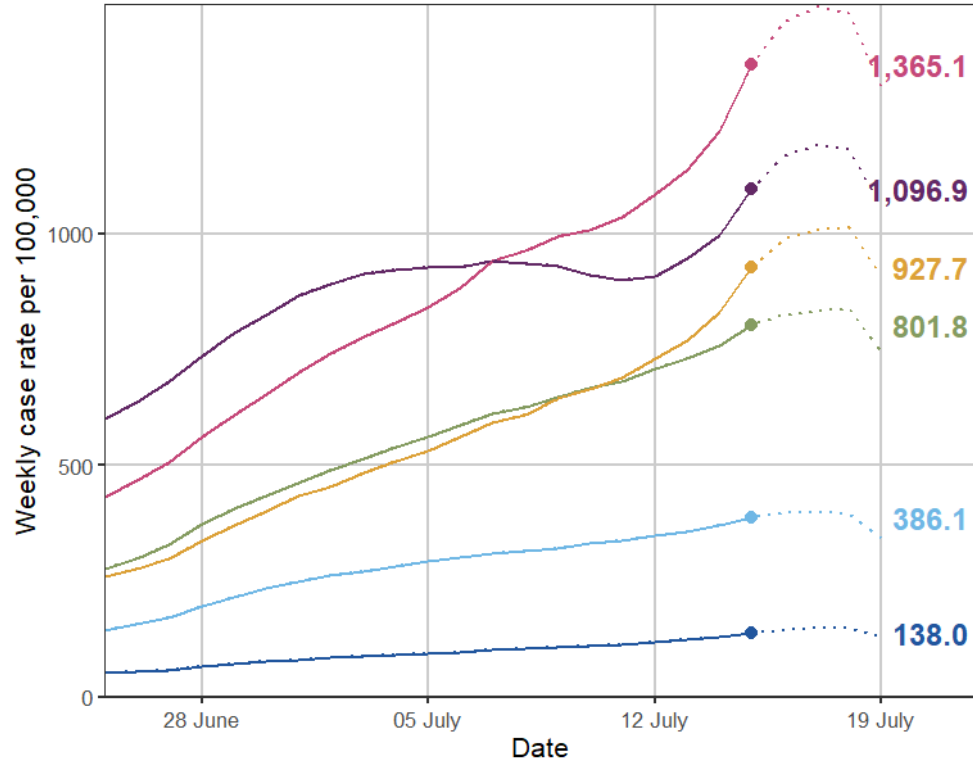
Labels show test rate for 09 July 2021 to 15 July 2021.
Excludes LFD tests

Excludes LFD tests

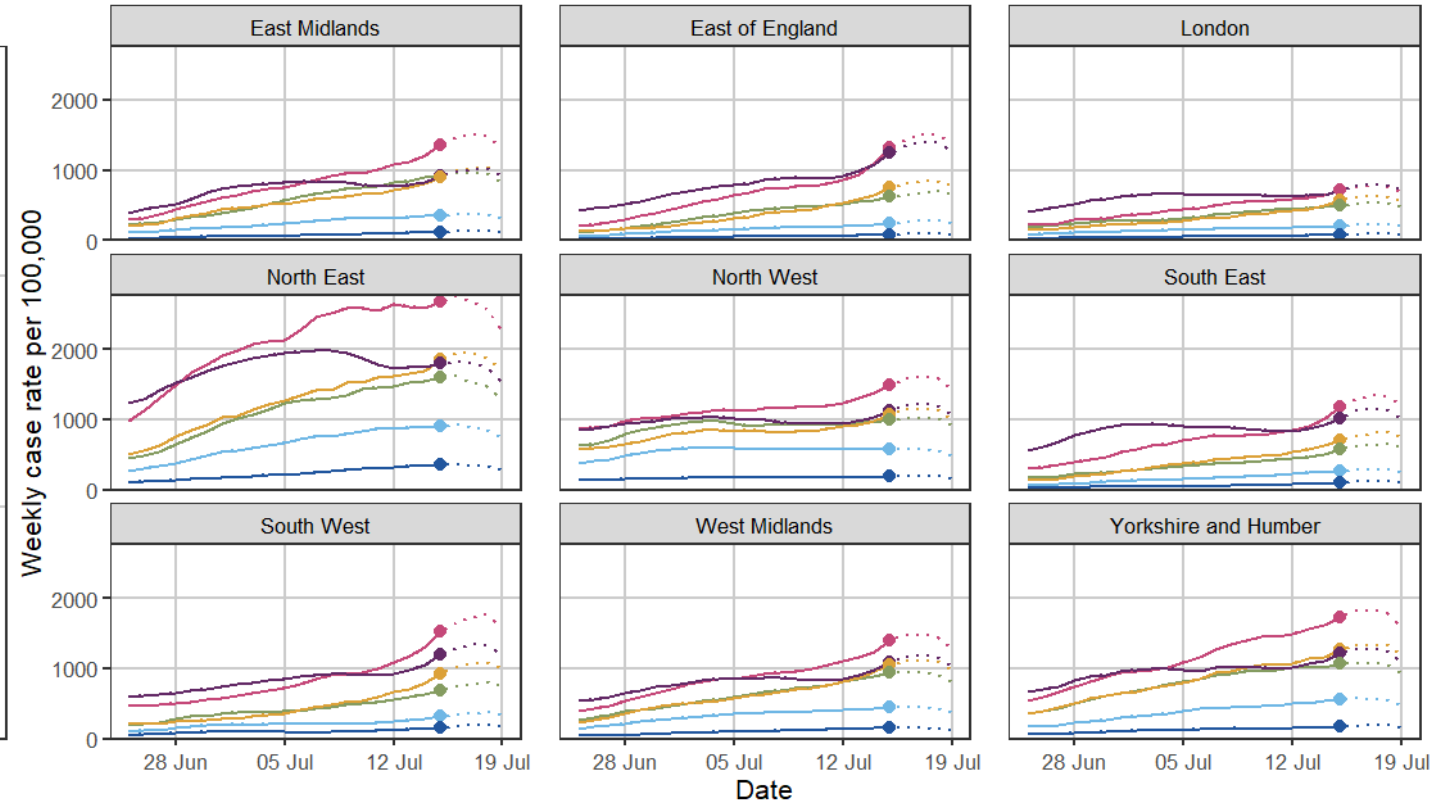
Case rate in England across both pillars 1 and 2 (weekly) - young people

Data up to 15 July 2021

Weekly case rate per 100,000 population by age group (0 to 21 year olds)



Weekly case rate per 100,000 population by age group (0 to 21 year olds)

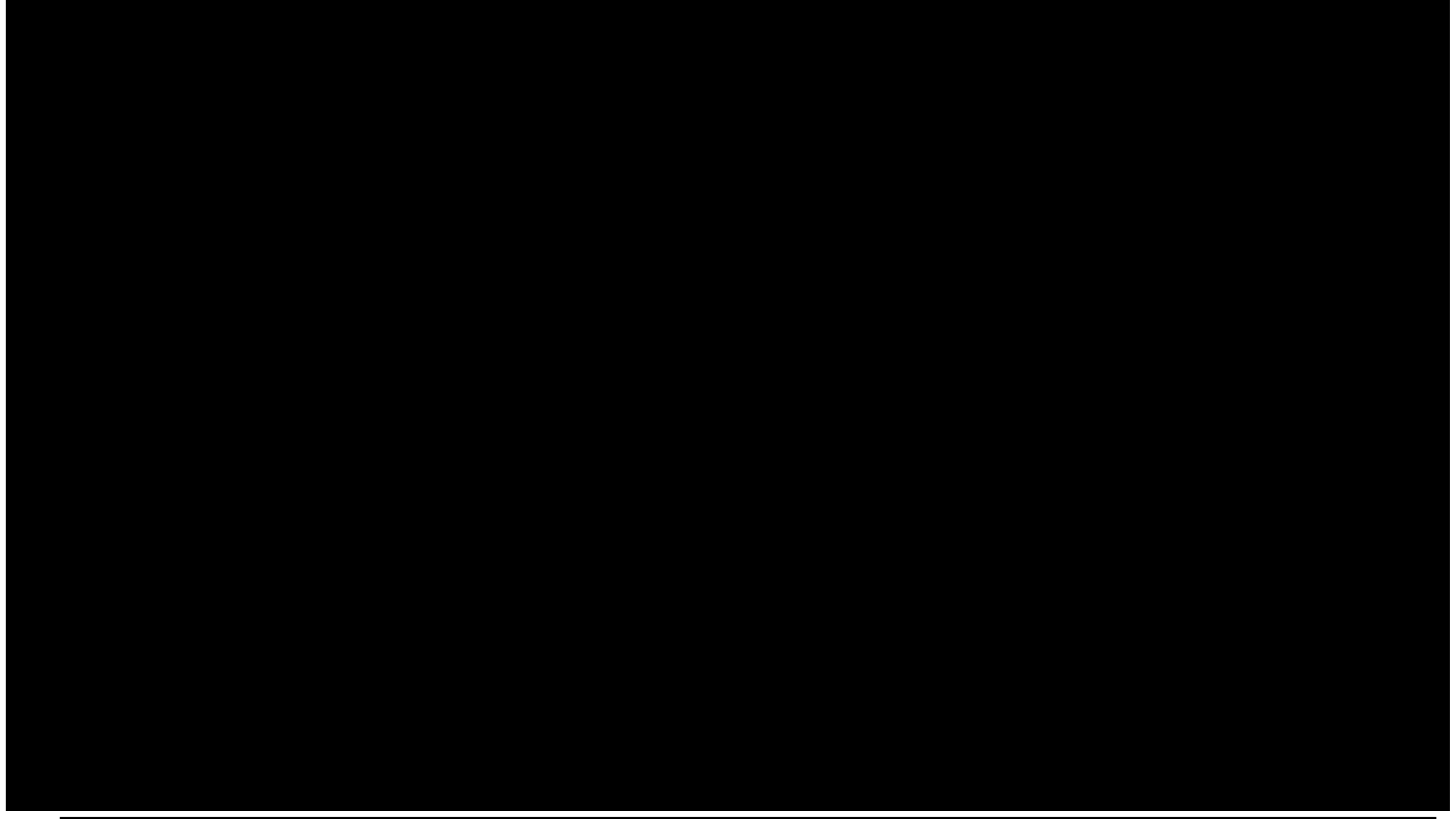


Age group, yrs

- 0-4
- 5-10
- 11-14
- 15-16
- 17-18
- 19-21

Labels show weekly case rate for 09 July 2021 to 15 July 2021
Dashed lines indicate period with provisional data

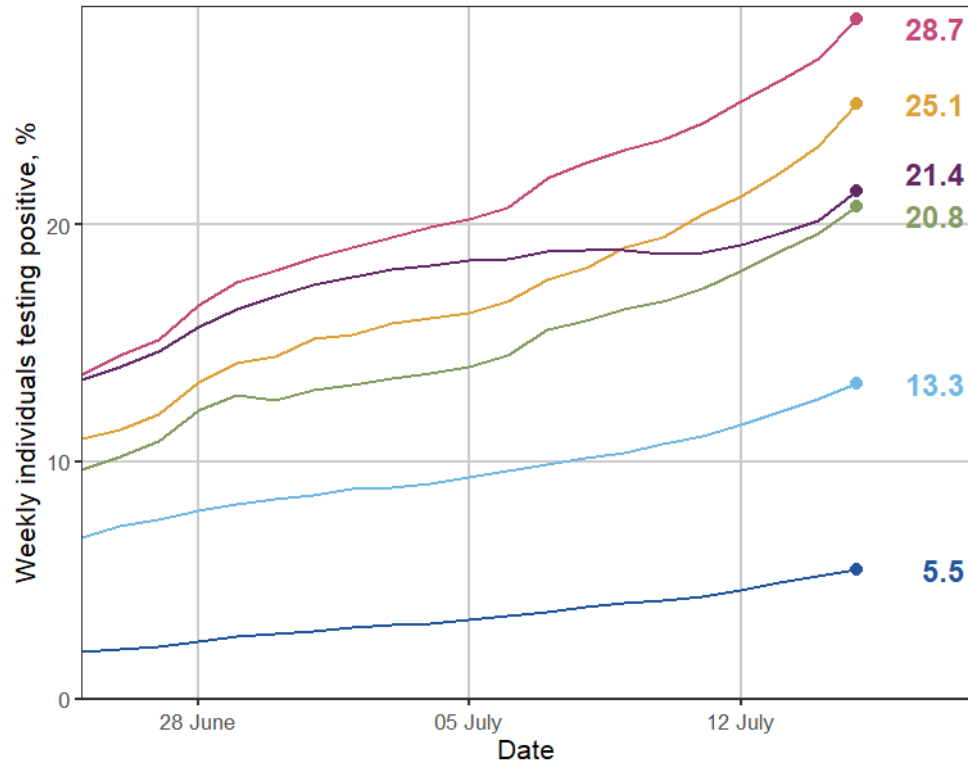
Dashed lines indicate period with provisional data



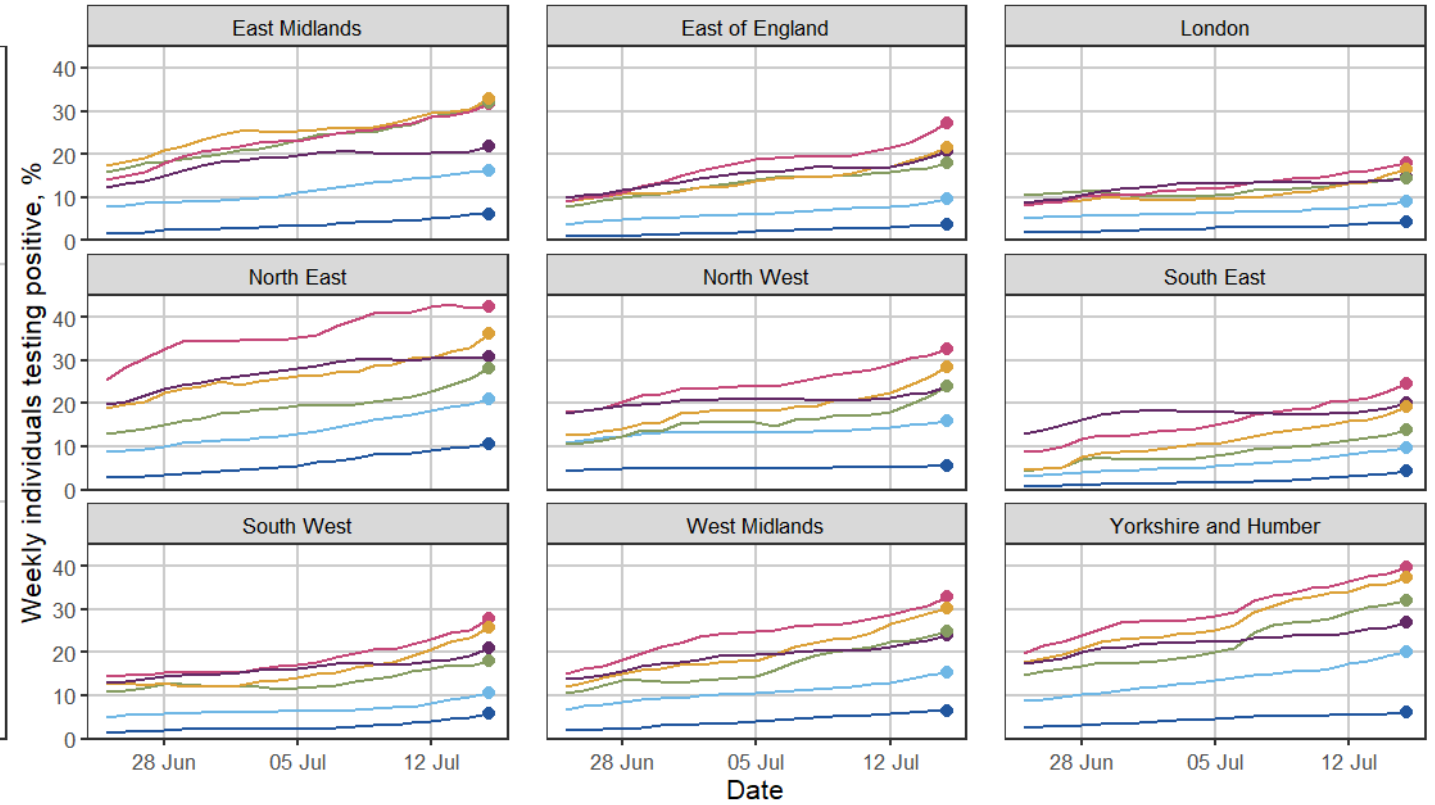
Percentage of individuals testing positive in England across both pillars 1 and 2 (weekly) - young people

Data up to 15 July 2021

Weekly individual test positivity, %, by age group (0 to 21 year olds)



Weekly individual test positivity, %, by age group (0 to 21 year olds)



Age group, yrs

- 0-4
- 5-10
- 11-14
- 15-16
- 17-18
- 19-21

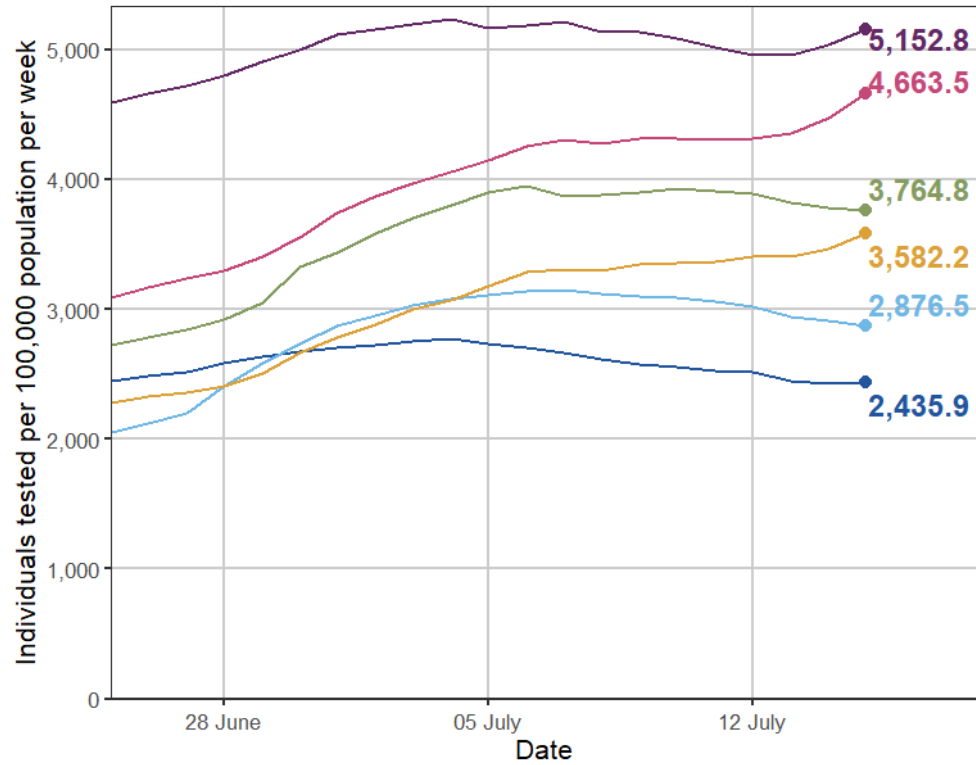
Labels show positivity rate for 09 July 2021 to 15 July 2021.
Excludes LFD tests

Excludes LFD tests

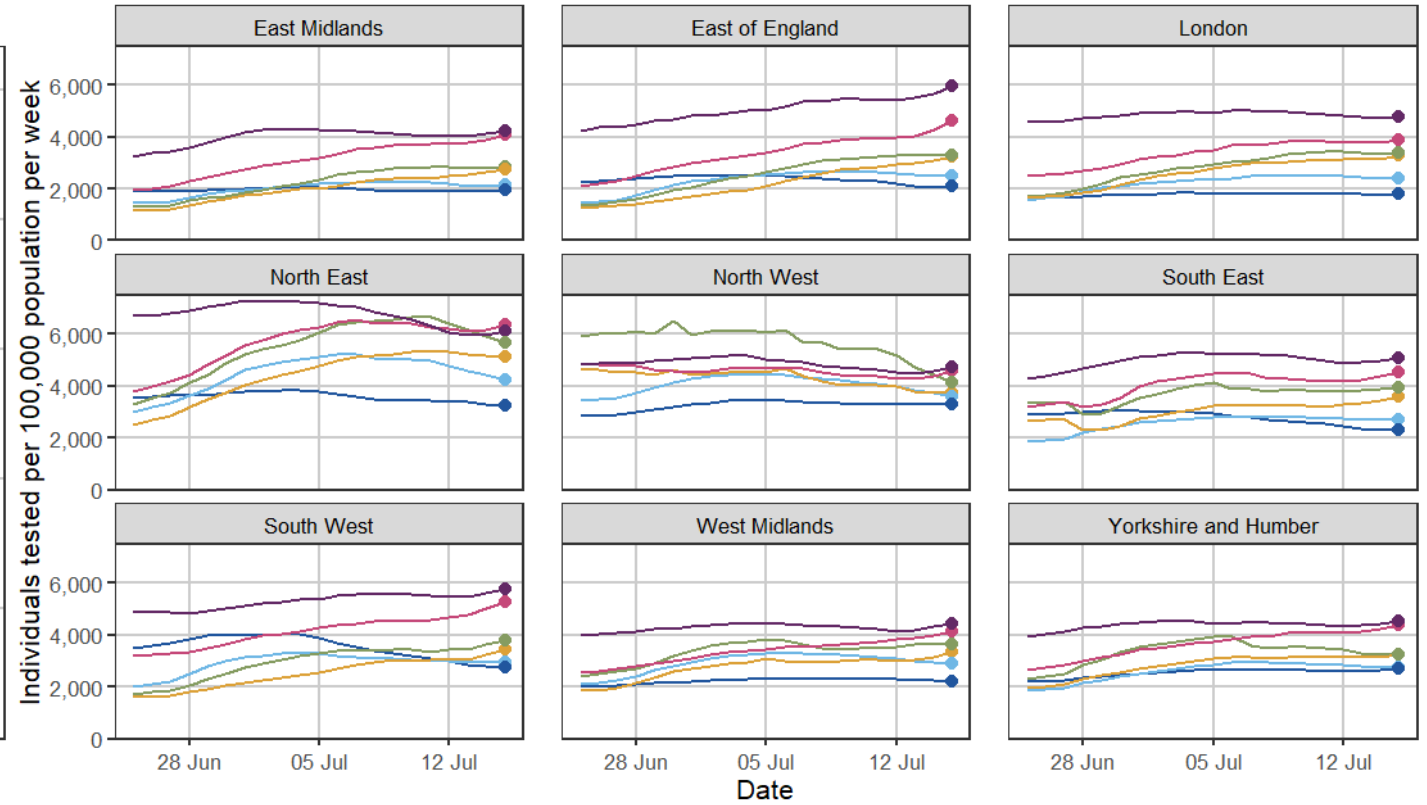
Individuals tested in England across both pillars 1 and 2 (weekly) - young people

Data up to 15 July 2021

Individuals tested per 100,000 population (0 to 21 year olds)



Individuals tested per 100,000 population (0 to 21 year olds)

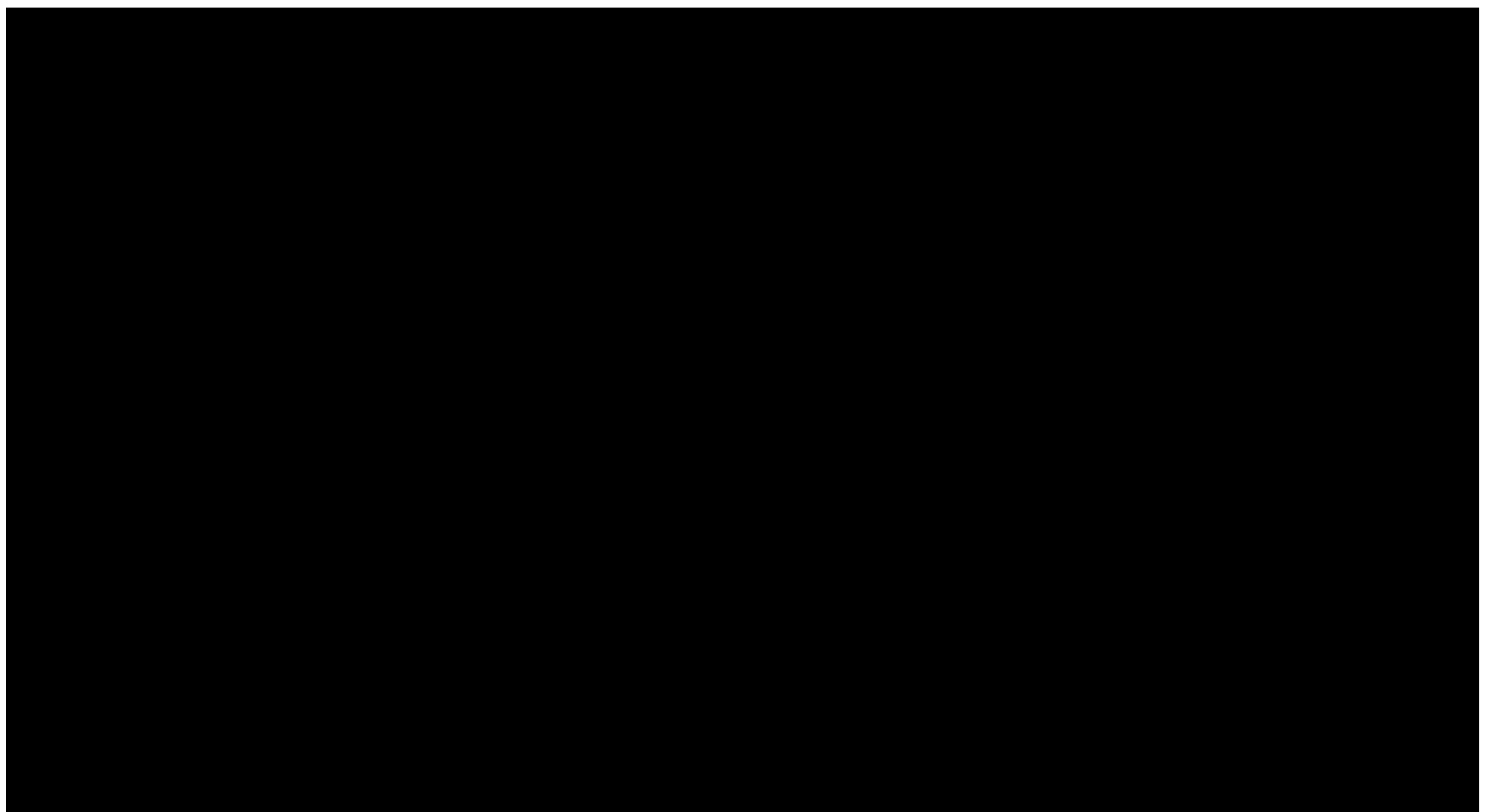


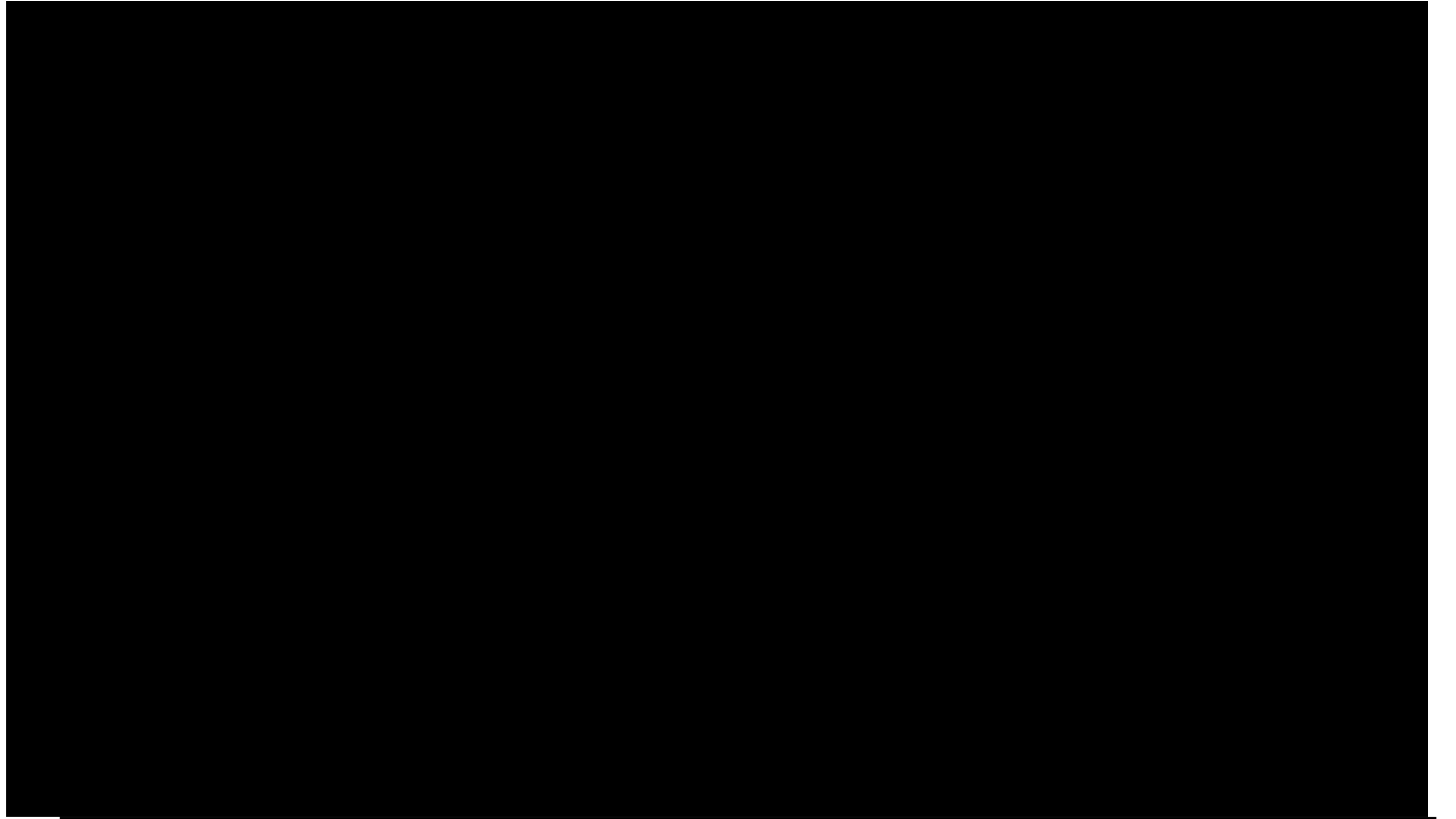
Age group, yrs

- 0-4
- 11-14
- 17-18
- 5-10
- 15-16
- 19-21

Labels show weekly testing rate for 09 July 2021 to 15 July 2021.
Excludes LFD tests

Excludes LFD tests









Percentage prevalence of COVID-19 across England and Government Office regions - table

Date of report 16 July 2021 by PHE Joint Modelling Cell

Methodology

Prevalence estimates were generated by the Cambridge real-time model on **09 July 2021** using data up to **03 July 2021**.

The percentage prevalence of COVID-19 infections in the regional populations are rated using the following scale:

- Low prevalence: less than 0.5%
- Medium prevalence: 0.5% to, but not including, 2%
- High prevalence: 2% and above.

These estimates are subject to, sometime significant, revision on a weekly basis. The underpinning model relies on death data which is subject to a reporting lag. In the weeks surrounding the implementation and relaxation of restrictions, it often takes a while for the system to settle, to account for the data lag and changes in mobility patterns. All prevalence estimates are reported as percentages, the values in parentheses represent the 5th and 95th percentiles respectively.

Further details on the Cambridge real-time model can be found [here](#)

Geography	09/07/2021	16/07/2021	23/07/2021
England	0.61 (0.55, 0.68)	0.72 (0.61, 0.86)	0.83 (0.67, 1.04)
North East	1.83 (1.36, 2.50)	2.30 (1.50, 3.60)	2.71 (1.56, 4.66)
Yorkshire and The Humber	0.58 (0.43, 0.80)	0.67 (0.43, 1.08)	0.75 (0.41, 1.40)
North West	0.78 (0.60, 1.05)	0.87 (0.57, 1.36)	0.92 (0.53, 1.67)
East Midlands	0.57 (0.41, 0.81)	0.63 (0.38, 1.04)	0.67 (0.35, 1.29)
West Midlands	0.68 (0.50, 0.94)	0.79 (0.50, 1.28)	0.89 (0.48, 1.69)
East of England	0.41 (0.29, 0.58)	0.44 (0.27, 0.76)	0.47 (0.24, 0.95)
London	0.49 (0.38, 0.66)	0.60 (0.40, 0.94)	0.70 (0.40, 1.29)
South East	0.30 (0.22, 0.42)	0.35 (0.22, 0.57)	0.39 (0.21, 0.76)
South West	0.60 (0.44, 0.87)	0.68 (0.42, 1.16)	0.75 (0.39, 1.51)

Revisions of note

Values for England and all Regions have been revised upwards as a result of case rates (and parameters based on these) increasing faster than predicted by the model. Most values have been re-categorized as medium prevalence, but for the North East prevalence is estimated as high.

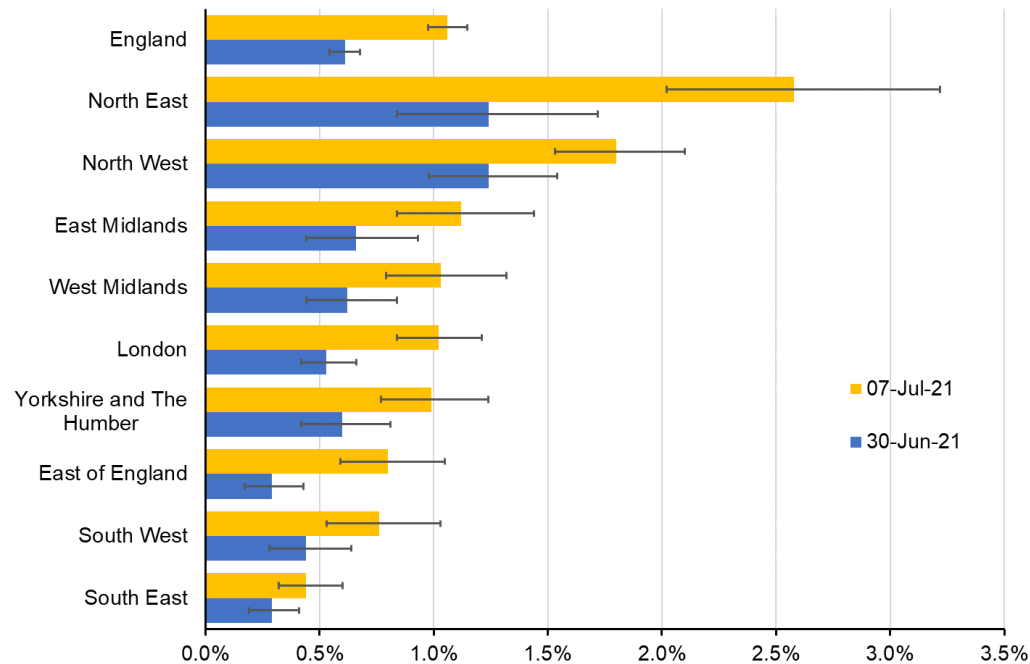
Estimated Prevalence by Region

ONS Coronavirus (COVID-19) Infection Survey (16 July)

In England, the percentage of people testing positive for coronavirus (COVID-19) continued to increase in the week ending 10 July 2021; we estimate that 577,700 people within the community population in England had COVID-19 (95% credible interval: 532,700 to 625,300), equating to around 1 in 95 people.

During the week ending 10 July 2021, the highest percentage of people testing positive was observed in the North East and North West. In the data used to produce these estimates, the number of people sampled in each region who tested positive for COVID-19 was low relative to England overall. In the week ending 10 July 2021, the percentage of people testing positive continued to increase in all regions of England.

ONS (COVID-19) Infection Survey- Prevalence by region



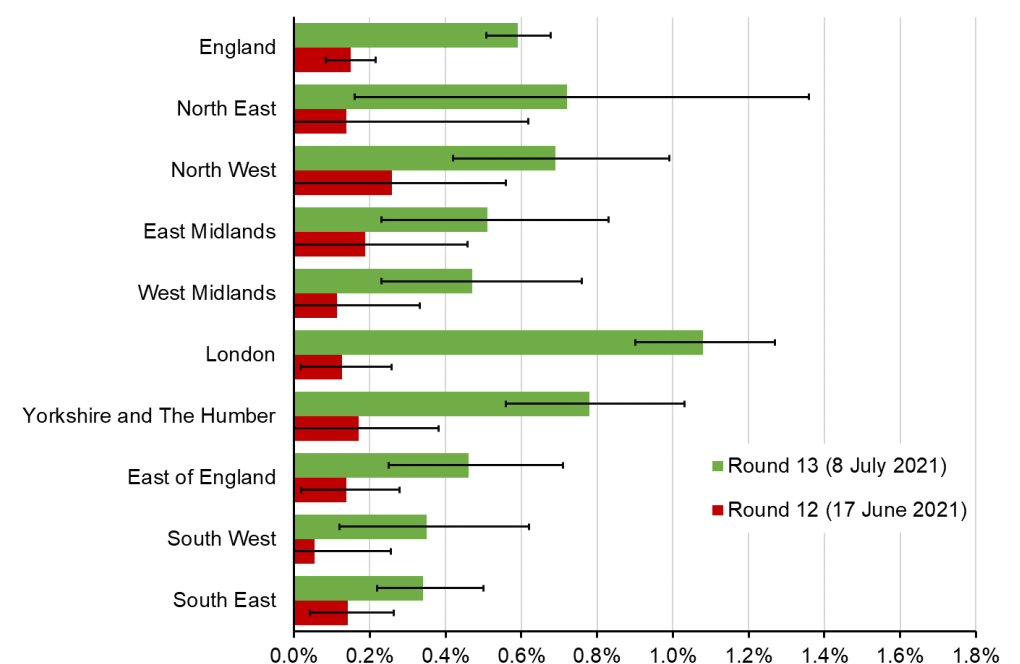
Coronavirus (COVID-19) Infection Survey, UK: 16 July 2021

REACT-1 round 13 report (8 July)

Between rounds 12 and 13, national prevalence increased from 0.15% (0.12%, 0.18%) to 0.59% (0.51%, 0.68%). During round 13, we observed an acceleration during round 13 interim for which we estimated a doubling time of 6.1 (4.0, 12) days and a corresponding R of 1.87 (1.40, 2.45).

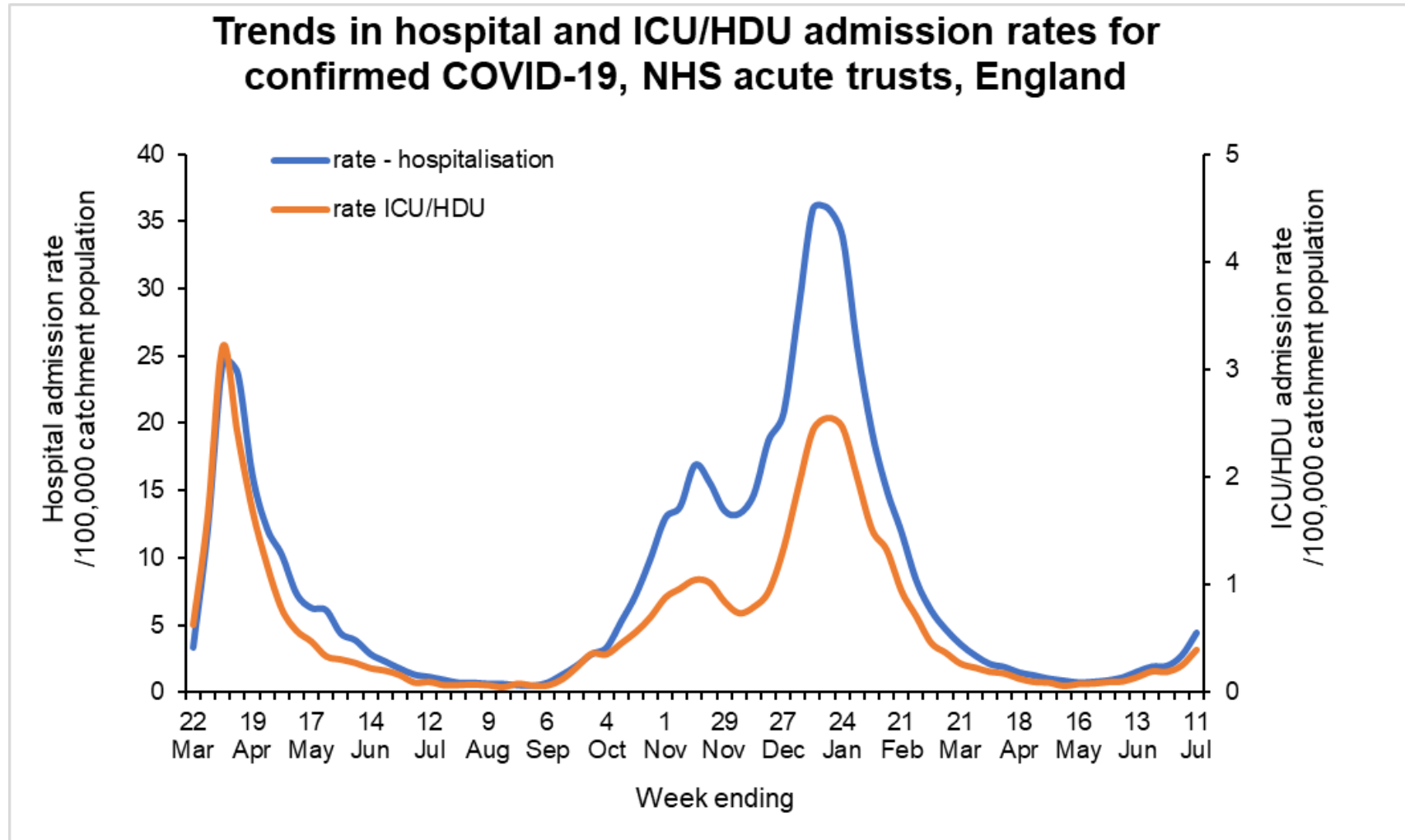
Weighted prevalence of swab-positivity in London increased eight-fold, rising from 0.13% (0.08%, 0.20%) in round 12 to 1.08% (0.79%, 1.47%) in round 13 interim. We also detected positive growth for all other regions and observed that the growth rate for the North West was lower than that for London for the period from round 12 to round 13 interim.

REACT-1 study - Prevalence by region



REACT-1 round 13 final report from 08/07/21.

Hospitalisations national trends



Hospital admissions refers to admissions to all levels of care inclusive of ICU/HDU admissions



