



Public Health  
England



Test and Trace

# COVID-19 SITUATIONAL AWARENESS

SUMMARY

MAIN REPORT  
6 July 2021

# Contents

This situational awareness summary report collates information and intelligence from various sources. The summary will be provided daily and the content will continue to be developed.

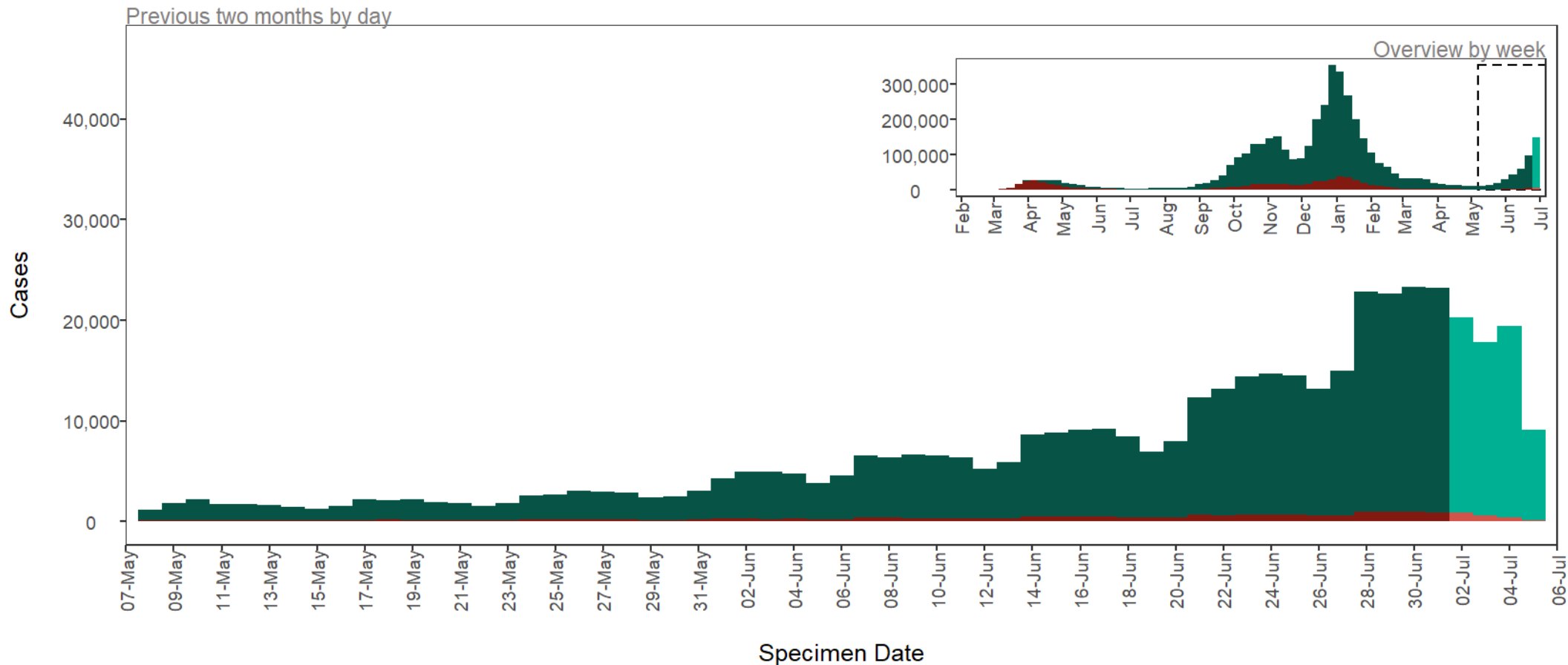
- [National context](#)
- [Case rate and case rate change maps](#)
- [High level summary tables](#)
- [REDACTED]
- [Case numbers by test type](#)
- [Case rates, \[REDACTED\], positivity and testing](#)
- [REDACTED]
- [REDACTED]
- [REDACTED]
- [Prevalence](#)
- [Hospitalisation](#)
- [REDACTED]
- [REDACTED]
- [REDACTED]

Throughout the SAR:

Lower tier local authorities is used to represent local authority districts, unitary authorities, metropolitan district and London boroughs,  
Upper tier local authorities is used to represent counties, metropolitan counties, London boroughs and unitary authorities

# National context

## England confirmed cases - epidemic curve

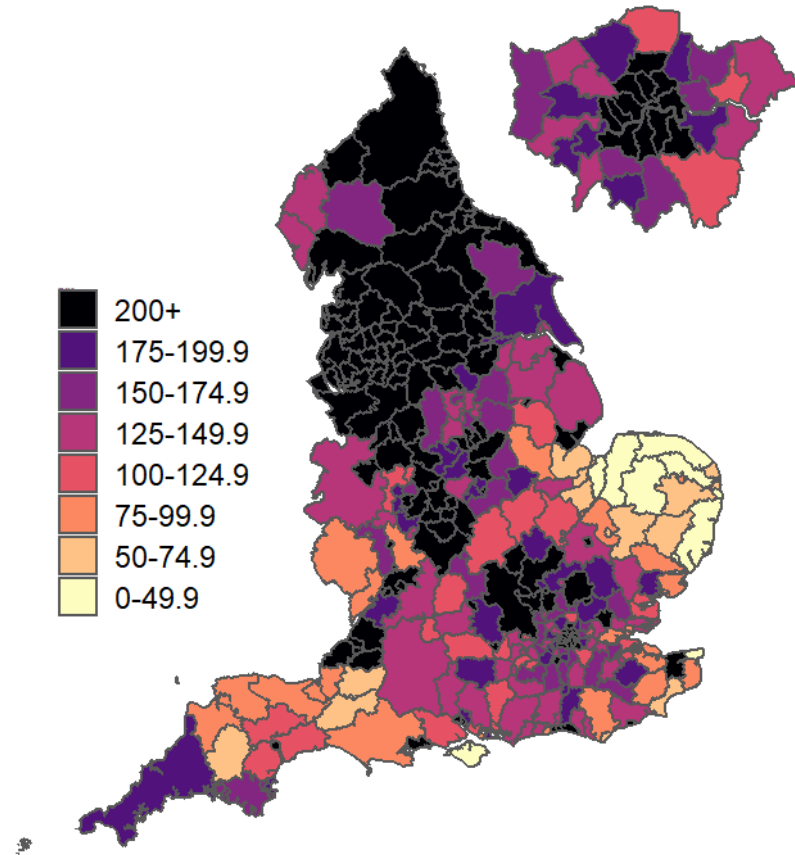


Bars shaded in **light red** and **light green** are provisional. Figures are expected to change as results are received for additional samples tested during this period. Inset epi curve is based on weekly reports from date of first case diagnosed. Main epi curve shows daily cases truncated to show the previous two months. Value labels are for combined **pillar 1** and **pillar 2** cases.

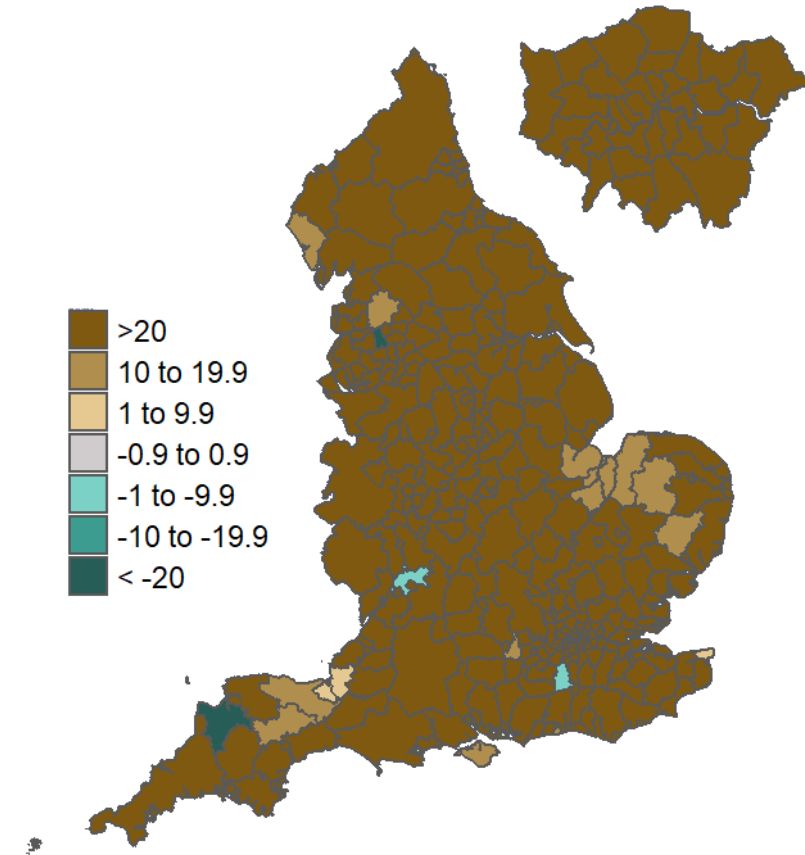
Produced by the Outbreak Surveillance Team, Public Health England.

# Case Rates - Geographical spread of COVID-19 in England

Weekly case rates per 100,000 population  
by local authority  
25 Jun to 01 Jul 2021



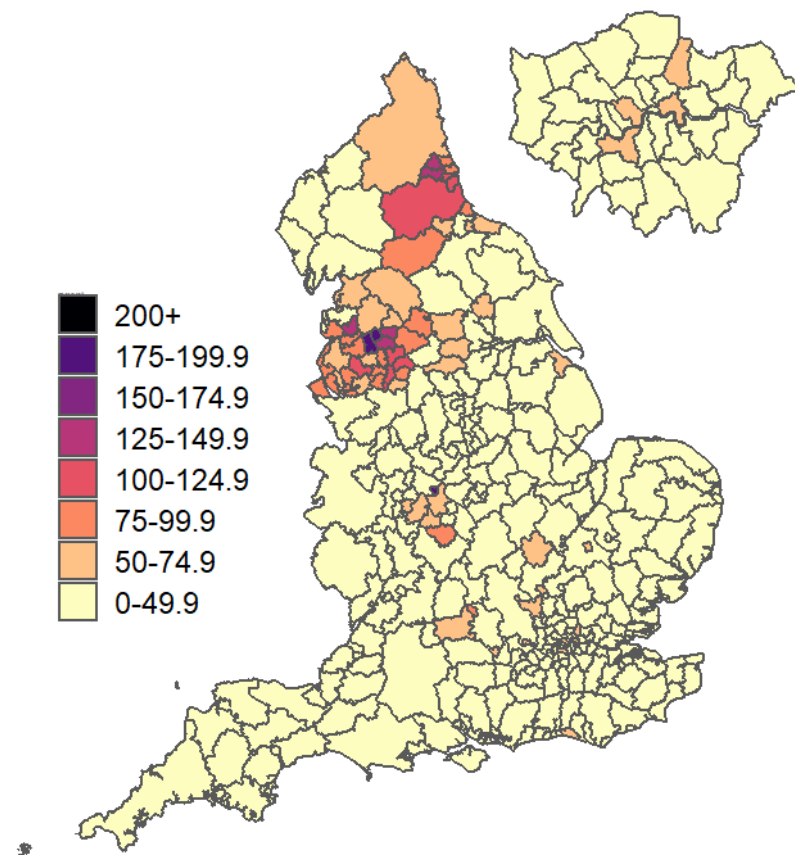
Absolute case rate change per 100,000 population  
by local authority  
18 Jun to 24 Jun 2021 and 25 Jun to 01 Jul 2021



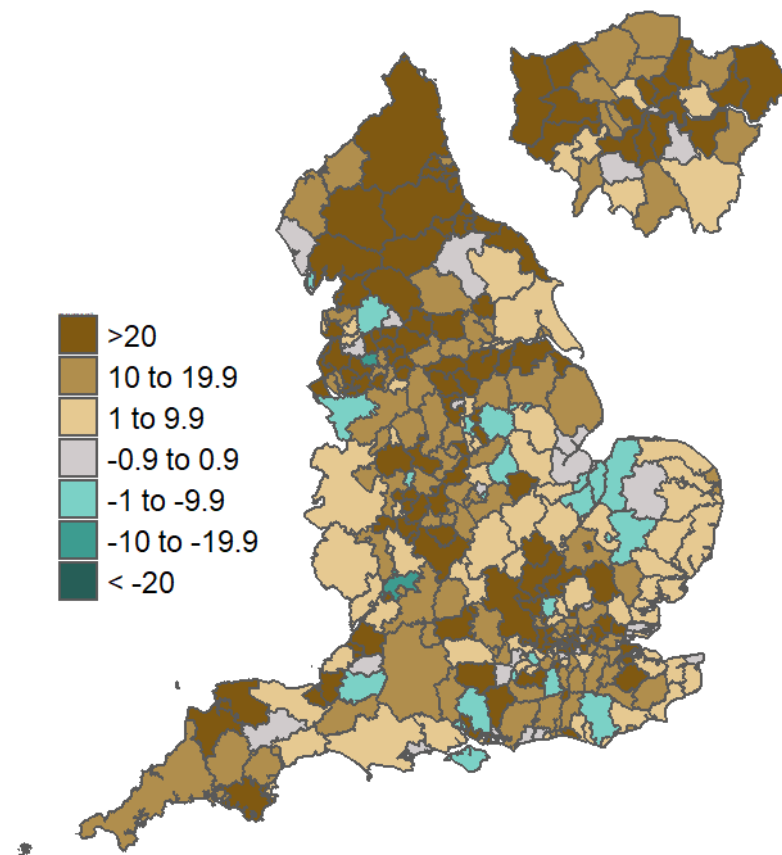
Data from SGSS; Pillar 1 and 2 testing. Figure by Outbreak Surveillance Team, Public Health England. Contains National Statistics data including 2019 population estimates. Crown copyright and database right 2021

# Case Rates - Geographical spread of COVID-19 in England (aged 60+ years)

Weekly case rates per 100,000 population  
by local authority  
25 Jun to 01 Jul 2021



Absolute case rate change per 100,000 population  
by local authority  
18 Jun to 24 Jun 2021 and 25 Jun to 01 Jul 2021



Data from SGSS; Pillar 1 and 2 testing. Figure by Outbreak Surveillance Team, Public Health England. Contains National Statistics data including 2019 population estimates. Crown copyright and database right 2021

# High level summary 1 - PHE regions

All indicators for the last 7 days (25 June 2021 to 01 July 2021)

| Region               | Individuals tested per day per 100,000 population |                 | Percentage individuals test positive |                 | Number of LTLAs by percentage individuals test positive RAG status |            |            | Percentage individual cases reporting symptoms |                 | Case rate per 100,000 population, all ages |                 | Number of LTLAs by case rate per 100,000 RAG status |          |          | Case rate per 100,000 population aged 60 years and over |                 | Case rate per 100,000 population aged 11-16yrs |                 | Case rate per 100,000 population aged 17-21yrs |                 | Community outbreaks | Newly confirmed cases | Specimens tested with TaqPath assay | Cases with SGTF |
|----------------------|---|-----------------|--------------------------------------|-----------------|--|------------|------------|--|-----------------|--|-----------------|---|----------|----------|---|-----------------|--|-----------------|--|-----------------|---------------------|-----------------------|-------------------------------------|-----------------|
|                      | 7-day moving average                              | 7-day change, % | Weekly                               | 7-day change, % | R  | A          | G          | Weekly, Pillar 2 only                          | 7-day change, % | Weekly                                     | 7-day change, % | R   | A        | G        | Weekly  | 7-day change, % | Weekly   | 7-day change, % | Weekly   | 7-day change, % | Last 7 days         | Last 7 days           | Last 7 days, %                      | Last 7 days, %  |
| East Midlands        | 443.1   | +11.2%          | 5.9%                                 | +73.5%          | 6  | 21         | 8          |  |                 | 188.7                                      | +93.9%          | 35  | 0        | 0        | 25.8  | +58.3%          | 403.7  | +97.9%          | 693.8  | +113.0%         |                     |                       | 53.2%                               | 1.3%            |
| East of England      | 497.1   | +9.8%           | 3.8%                                 | +90.0%          | 0  | 20         | 26         |  |                 | 137.6                                      | +105.4%         | 40  | 6        | 0        | 22.1  | +121.0%         | 241.7  | +102.6%         | 572.1  | +82.4%          |                     |                       | 58.2%                               | 0.7%            |
| London               | 570.8   | +8.4%           | 4.7%                                 | +56.7%          | 0  | 23         | 10         |  |                 | 192.0                                      | +71.9%          | 33  | 0        | 0        | 37.0  | +97.9%          | 263.7  | +64.1%          | 510.2  | +68.6%          |                     |                       | 32.4%                               | 0.5%            |
| North East           | 676.4   | +24.8%          | 11.2%                                | +64.7%          | 12   | 0          | 0          |  |                 | 527.7                                      | +103.4%         | 12  | 0        | 0        | 93.3  | +132.1%         | 966.2  | +142.8%         | 1,807.5  | +68.1%          |                     |                       | 76.9%                               | 0.3%            |
| North West           | 622.1   | +5.0%           | 9.1%                                 | +28.2%          | 26   | 11         | 2          |  |                 | 400.4                                      | +37.9%          | 39  | 0        | 0        | 75.5  | +43.8%          | 880.9  | +51.1%          | 1,026.7  | +24.2%          |                     |                       | 59.0%                               | 0.3%            |
| South East           | 549.8   | +3.2%           | 4.2%                                 | +100.0%         | 3  | 20         | 40         |  |                 | 164.5                                      | +104.1%         | 61  | 2        | 0        | 24.0  | +126.4%         | 265.0  | +84.0%          | 764.2  | +90.7%          |                     |                       | 34.4%                               | 0.3%            |
| South West           | 561.4   | +10.6%          | 4.6%                                 | +43.7%          | 1  | 12         | 17         |  |                 | 183.3                                      | +60.2%          | 29  | 1        | 0        | 26.7  | +78.0%          | 329.4  | +79.8%          | 675.1  | +24.5%          |                     |                       | 14.5%                               | 0.9%            |
| West Midlands        | 505.7   | +12.4%          | 6.3%                                 | +65.8%          | 5  | 19         | 6          |  |                 | 228.9                                      | +87.3%          | 30  | 0        | 0        | 40.2  | +129.7%         | 466.9  | +101.2%         | 739.2  | +59.7%          |                     |                       | 53.0%                               | 0.6%            |
| Yorkshire and Humber | 508.5   | +13.5%          | 8.4%                                 | +55.6%          | 9  | 11         | 1          |  |                 | 302.7                                      | +77.7%          | 21  | 0        | 0        | 49.9  | +83.5%          | 653.0  | +104.3%         | 943.9  | +63.5%          |                     |                       | 61.4%                               | 0.7%            |
| <b>England</b>       | <b>563.8</b>                                      | <b>+8.9%</b>    | <b>6.0%</b>                          | <b>+57.9%</b>   | <b>62</b>  | <b>137</b> | <b>110</b> |  |                 | <b>239.3</b>                               | <b>+72.5%</b>   | <b>300</b>  | <b>9</b> | <b>0</b> | <b>40.9</b>   | <b>+83.4%</b>   | <b>453.2</b>                                   | <b>+82.1%</b>   | <b>799.9</b>                                   | <b>+58.7%</b>   |                     | <b>134,680</b>        | <b>45.1%</b>                        | <b>0.5%</b>     |

## High level summary data definitions

Weekly case rate  
 Individuals tested per day per 100,000 (7-dma)  
 Weekly percentage individuals test positive  
 Community outbreaks  
 Data for positive cases with specimen dates between 25 June 2021 and 01 July 2021  
 7-day change % demonstrates how figures compare to the equivalent figure as of 24 June 2021  
 The proportion of samples tested with a TaqPath assay is low in some regions and LTLAs which increases uncertainty around the % of cases with SGTF. In addition, local trends in these data may be affected by decisions to direct the processing of samples via a TaqPath laboratory.

**RAG rating thresholds**  
 Percentage positive  
 All cases / 11-16 / 17-21 year olds weekly case rate  
 Age 60+ cases weekly case rate  
 7-day change, %

Total number of newly confirmed cases in the most recent 7 day period per 100,000 population  
 7-day moving average number of individuals tested per 100,000 population per day  
 Percentage of all individuals tested with specimen dates in the most recent 7 day period test positive for SARS CoV-2  
 Number of outbreaks reported to PHE during the 7 day period, excluding those reported from secondary healthcare and care home settings.

Red >7.5%, Amber >4 to 7.5%  
 Maroon >250 cases per week, Dark Red > 150 cases per week, Red >50 cases per 100,000 per week, Amber >25 per 100,000 per week  
 Maroon >150 cases per week, Dark Red > 100 cases per week, Red >50 cases per 100,000 per week, Amber >25 per 100,000 per week  
 Maroon > +100%, Dark Red > +50%, Red > +10%, Amber > -10%, Green < -10%



# High level summary 2 - 20 Highest LTLAs by case rate

All indicators for the last 7 days (25 June 2021 to 01 July 2021)

| Region               | LTLA                    | Individuals tested per day per 100,000 population |                 | Percentage individuals test positive |                 | Percentage individual cases reporting symptoms |                 | Case rate per 100,000 population, all ages |              |                 | Case rate per 100,000 population aged 60 years and over |                 | Case rate per 100,000 population aged 11-16yrs |                 | Case rate per 100,000 population aged 17-21yrs |                 | Community outbreaks | Newly confirmed cases | Specimens tested with TaqPath assay | Cases with SGTF |                |
|----------------------|-------------------------|---|-----------------|--------------------------------------|-----------------|--|-----------------|--|--------------|-----------------|---|-----------------|--|-----------------|--|-----------------|---------------------|-----------------------|-------------------------------------|-----------------|----------------|
|                      |                         | 7-day moving average                              | 7-day change, % | Weekly                               | 7-day change, % | Weekly, Pillar 2 only                          | 7-day change, % | Weekly                                     | 3 week trend | 7-day change, % | Weekly  | 7-day change, % | Weekly   | 7-day change, % | Weekly   | 7-day change, % | Weekly              | 7-day change, %       | Last 7 days                         | Last 7 days     | Last 7 days, % |
| West Midlands        | Tamworth                | 725.5   | +75.8%          | 13.9%                                | +71.6%          |  |                 | 734.1                                      |              | +182.9%         | 193.6   | +516.6%         | 968.7  | +231.2%         | 3,398.4  | +71.8%          |                     |                       |                                     | 66.7%           | 0.0%           |
| North East           | Newcastle upon Tyne     | 795.5   | +26.1%          | 13.1%                                | +37.9%          |  |                 | 712.0                                      |              | +74.0%          | 131.4   | +107.9%         | 1,034.4  | +116.1%         | 1,435.8  | +53.9%          |                     |                       |                                     | 76.2%           | 0.8%           |
| North East           | South Tyneside          | 670.9   | +42.0%          | 14.6%                                | +105.6%         |  |                 | 690.2                                      |              | +190.2%         | 88.3  | +299.5%         | 1,306.2  | +396.1%         | 3,108.7  | +152.2%         |                     |                       |                                     | 76.8%           | 0.0%           |
| North East           | Gateshead               | 719.0   | +32.6%          | 12.5%                                | +71.2%          |  |                 | 629.5                                      |              | +129.2%         | 125.3   | +306.8%         | 1,003.0  | +151.0%         | 1,827.8  | +83.8%          |                     |                       |                                     | 75.4%           | 0.5%           |
| South East           | Oxford                  | 712.6   | +41.3%          | 12.3%                                | +215.4%         |  |                 | 629.0                                      |              | +335.9%         | 83.9  | +599.2%         | 302.8  | +172.8%         | 2,207.7  | +373.5%         |                     |                       |                                     | 42.5%           | 0.3%           |
| North West           | Rossendale              | 622.1   | +4.3%           | 14.5%                                | +36.8%          |  |                 | 621.1                                      |              | +43.7%          | 130.1   | +77.0%          | 1,064.0  | +33.3%          | 1,547.9  | +82.8%          |                     |                       |                                     | 61.0%           | 0.0%           |
| Yorkshire and Humber | North East Lincolnshire | 512.7   | +28.0%          | 15.9%                                | +63.9%          |  |                 | 607.9                                      |              | +118.0%         | 72.7  | +138.4%         | 1,229.9  | +321.2%         | 2,190.3  | +70.7%          |                     |                       |                                     | 76.1%           | 0.0%           |
| North East           | Sunderland              | 699.7   | +27.1%          | 12.1%                                | +86.2%          |  |                 | 606.4                                      |              | +135.9%         | 114.9   | +180.2%         | 1,241.4  | +216.9%         | 1,903.9  | +81.3%          |                     |                       |                                     | 75.0%           | 0.3%           |
| North West           | Hyndburn                | 703.7   | +0.2%           | 12.6%                                | +11.5%          |  |                 | 602.1                                      |              | +9.9%           | 185.2   | +20.0%          | 1,059.4  | -3.0%           | 1,321.2  | +41.5%          |                     |                       |                                     | 61.2%           | 0.0%           |
| North East           | North Tyneside          | 752.5   | +19.5%          | 11.2%                                | +27.3%          |  |                 | 586.8                                      |              | +50.8%          | 99.4  | +17.1%          | 1,136.8  | +40.2%          | 1,903.2  | +38.8%          |                     |                       |                                     | 76.6%           | 0.3%           |
| North East           | County Durham           | 757.6   | +18.2%          | 11.3%                                | +52.7%          |  |                 | 584.8                                      |              | +77.8%          | 115.3   | +128.8%         | 1,178.1  | +147.5%         | 2,190.3  | +30.1%          |                     |                       |                                     | 82.1%           | 0.0%           |
| North West           | Manchester              | 693.8   | +11.9%          | 11.4%                                | +7.5%           |  |                 | 544.4                                      |              | +25.1%          | 106.8   | +17.0%          | 1,052.8  | +37.5%          | 795.6  | -7.0%           |                     |                       |                                     | 64.5%           | 0.3%           |
| North West           | Oldham                  | 573.1   | +16.7%          | 13.2%                                | +50.0%          |  |                 | 538.1                                      |              | +81.5%          | 109.2   | +89.6%          | 1,454.1  | +172.1%         | 964.1  | +51.1%          |                     |                       |                                     | 68.2%           | 1.1%           |
| North West           | Wigan                   | 571.3   | +4.2%           | 12.6%                                | +23.5%          |  |                 | 515.1                                      |              | +31.6%          | 106.6   | +47.4%          | 1,205.7  | +44.8%          | 1,629.9  | +41.1%          |                     |                       |                                     | 53.8%           | 0.0%           |
| North West           | Burnley                 | 724.2   | -3.0%           | 9.9%                                 | +17.9%          |  |                 | 502.7                                      |              | +15.8%          | 127.9   | +33.2%          | 1,164.9  | +83.3%          | 686.6  | -18.4%          |                     |                       |                                     | 55.9%           | 0.0%           |
| North West           | Salford                 | 628.0   | -6.3%           | 11.5%                                | +26.4%          |  |                 | 502.3                                      |              | +21.1%          | 86.2  | +27.3%          | 919.7  | +39.8%          | 925.1  | -15.9%          |                     |                       |                                     | 53.4%           | 0.2%           |
| North West           | Rochdale                | 637.2   | +14.9%          | 10.8%                                | +36.7%          |  |                 | 488.3                                      |              | +62.3%          | 123.0   | +71.5%          | 1,344.6  | +103.6%         | 1,217.6  | +59.1%          |                     |                       |                                     | 66.6%           | 0.3%           |
| North West           | Liverpool               | 553.8   | +9.3%           | 11.5%                                | +22.3%          |  |                 | 473.7                                      |              | +36.5%          | 93.8  | +23.9%          | 1,109.3  | +33.1%          | 987.7  | +24.2%          |                     |                       |                                     | 59.7%           | 0.6%           |
| North West           | Trafford                | 621.3   | +18.0%          | 10.6%                                | +27.7%          |  |                 | 454.2                                      |              | +54.0%          | 77.8  | +132.9%         | 1,086.4  | +82.5%          | 1,168.1  | +19.4%          |                     |                       |                                     | 64.3%           | 0.1%           |
| North East           | Darlington              | 615.6   | +22.8%          | 10.3%                                | +58.5%          |  |                 | 453.2                                      |              | +88.4%          | 70.1  | +901.4%         | 743.8  | +103.6%         | 1,651.6  | +3.7%           |                     |                       |                                     | 73.4%           | 0.3%           |
|                      | <b>England</b>          | <b>563.8</b>                                      | <b>+8.9%</b>    | <b>6.0%</b>                          | <b>+57.9%</b>   |  |                 | <b>239.3</b>                               |              | <b>+72.5%</b>   | <b>40.9</b>   | <b>+83.4%</b>   | <b>453.2</b>                                   | <b>+82.1%</b>   | <b>799.9</b>                                   | <b>+58.7%</b>   |                     |                       | <b>134,680</b>                      | <b>45.1%</b>    | <b>0.5%</b>    |

# High level summary 3 - 20 Highest LTLAs not included in summary table 2 where the weekly case rate change - all ages has risen >10% from the previous week

All indicators for the last 7 days (25 June 2021 to 01 July 2021)

| Region               | LTLA                 | Individuals tested per day per 100,000 population |                 | Percentage individuals test positive |                 | Percentage individual cases reporting symptoms |                 | Case rate per 100,000 population, all ages |              |                 | Case rate per 100,000 population aged 60 years and over |                 | Case rate per 100,000 population aged 11-16yrs |                 | Case rate per 100,000 population aged 17-21yrs |                 | Community outbreaks<br>Last 7 days | Newly confirmed cases<br>Last 7 days | Specimens tested with TaqPath assay<br>Last 7 days, % | Cases with SGTf |
|----------------------|----------------------|---|-----------------|--------------------------------------|-----------------|--|-----------------|--|--------------|-----------------|---|-----------------|--|-----------------|--|-----------------|------------------------------------|--------------------------------------|---|-----------------|
|                      |                      | 7-day moving average                              | 7-day change, % | Weekly                               | 7-day change, % | Weekly, Pillar 2 only                          | 7-day change, % | Weekly                                     | 3 week trend | 7-day change, % | Weekly  | 7-day change, % | Weekly   | 7-day change, % | Weekly   | 7-day change, % |                                    |                                      |   |                 |
| North East           | Redcar and Cleveland | 536.2   | +28.3%          | 10.3%                                | +128.9%         |  |                 | 381.3                                      |              | +178.1%         | 67.4  | +349.3%         | 888.3  | +173.3%         | 1,501.4  | +106.1%         |                                    |                                      | 71.2%   | 0.9%            |
| North East           | Hartlepool           | 501.0   | +22.5%          | 12.1%                                | +142.0%         |  |                 | 420.7                                      |              | +177.5%         | 87.0  | +75.1%          | 373.6  | +257.2%         | 2,090.5  | +232.2%         |                                    |                                      | 87.9%   | 0.0%            |
| North West           | West Lancashire      | 595.3   | +21.0%          | 8.7%                                 | +117.5%         |  |                 | 378.8                                      |              | +177.5%         | 58.5  | +172.1%         | 609.9  | +176.5%         | 1,254.6  | +289.6%         |                                    |                                      | 64.3%   | 0.0%            |
| Yorkshire and Humber | Barnsley             | 533.3   | +30.9%          | 11.4%                                | +75.4%          |  |                 | 443.2                                      |              | +133.3%         | 72.3  | +130.3%         | 1,250.8  | +252.5%         | 1,664.5  | +168.5%         |                                    |                                      | 70.7%   | 0.3%            |
| South East           | Brighton and Hove    | 659.5   | +26.7%          | 8.1%                                 | +76.1%          |  |                 | 384.7                                      |              | +124.7%         | 66.3  | +325.0%         | 331.3  | +93.1%          | 971.1  | +38.9%          |                                    |                                      | 10.8%   | 0.0%            |
| North West           | Lancaster            | 777.1   | +34.5%          | 8.2%                                 | +51.9%          |  |                 | 452.6                                      |              | +96.1%          | 66.6  | +47.0%          | 900.4  | +92.8%          | 1,644.6  | +79.2%          |                                    |                                      | 65.5%   | 0.4%            |
| East Midlands        | Nottingham           | 547.4   | +21.2%          | 10.9%                                | +62.7%          |  |                 | 400.7                                      |              | +88.7%          | 44.1  | +21.2%          | 575.7  | +100.0%         | 995.9  | +91.6%          |                                    |                                      | 56.0%   | 2.2%            |
| North West           | Wirral               | 625.6   | +15.3%          | 8.9%                                 | +64.8%          |  |                 | 390.7                                      |              | +80.5%          | 78.7  | +148.3%         | 1,409.1  | +126.9%         | 1,198.1  | +38.2%          |                                    |                                      | 65.8%   | 0.4%            |
| Yorkshire and Humber | Wakefield            | 565.0   | +27.9%          | 10.1%                                | +40.3%          |  |                 | 405.1                                      |              | +77.3%          | 59.7  | +44.6%          | 1,168.6  | +83.2%          | 1,390.2  | +65.4%          |                                    |                                      | 74.1%   | 0.4%            |
| North West           | St. Helens           | 536.0   | +13.3%          | 9.4%                                 | +44.6%          |  |                 | 374.9                                      |              | +77.3%          | 83.3  | +90.6%          | 785.6  | +168.6%         | 1,258.4  | +44.2%          |                                    |                                      | 59.0%   | 0.0%            |
| South West           | Bristol, City of     | 707.7   | +18.0%          | 7.8%                                 | +36.8%          |  |                 | 391.9                                      |              | +76.0%          | 44.1  | +94.3%          | 655.6  | +215.2%         | 928.8  | +14.3%          |                                    |                                      | 11.6%   | 0.0%            |
| Yorkshire and Humber | York                 | 530.2   | +12.9%          | 10.8%                                | +52.1%          |  |                 | 411.6                                      |              | +70.0%          | 56.5  | +154.5%         | 514.9  | +350.1%         | 1,424.9  | +42.2%          |                                    |                                      | 44.6%   | 0.4%            |
| North West           | Sefton               | 621.3   | +14.9%          | 9.6%                                 | +43.3%          |  |                 | 439.9                                      |              | +68.2%          | 84.4  | +108.9%         | 919.4  | +91.9%          | 1,733.9  | +71.2%          |                                    |                                      | 56.5%   | 0.0%            |
| West Midlands        | Warwick              | 793.3   | +31.7%          | 8.1%                                 | +19.1%          |  |                 | 441.0                                      |              | +54.6%          | 81.1  | +249.6%         | 610.6  | +266.7%         | 1,549.5  | -13.1%          |                                    |                                      | 70.4%   | 0.2%            |
| Yorkshire and Humber | Leeds                | 568.8   | +14.8%          | 11.5%                                | +32.2%          |  |                 | 451.1                                      |              | +50.1%          | 69.6  | +60.0%          | 888.3  | +82.1%          | 1,069.2  | +20.8%          |                                    |                                      | 63.5%   | 0.3%            |
| North West           | Tameside             | 573.5   | +13.9%          | 10.1%                                | +23.2%          |  |                 | 407.1                                      |              | +41.4%          | 77.7  | +70.8%          | 977.7  | +58.2%          | 915.0  | +2.9%           |                                    |                                      | 71.4%   | 0.6%            |
| North West           | Knowsley             | 541.6   | +1.2%           | 11.5%                                | +45.6%          |  |                 | 440.1                                      |              | +41.3%          | 72.6  | +30.1%          | 930.5  | +9.0%           | 1,108.4  | +65.5%          |                                    |                                      | 62.7%   | 0.7%            |
| North West           | Pendle               | 559.6   | -10.4%          | 10.9%                                | +34.6%          |  |                 | 419.1                                      |              | +24.5%          | 57.5  | 0.0%            | 1,279.2  | +88.9%          | 812.8  | +40.7%          |                                    |                                      | 53.1%   | 0.0%            |
| North West           | Chorley              | 793.9   | +8.8%           | 7.3%                                 | +12.3%          |  |                 | 404.3                                      |              | +23.5%          | 78.5  | 0.0%            | 811.0  | +26.9%          | 789.9  | -32.3%          |                                    |                                      | 56.0%   | 0.0%            |
| North West           | Bury                 | 572.1   | +9.5%           | 10.1%                                | +4.1%           |  |                 | 403.7                                      |              | +17.5%          | 92.5  | +23.5%          | 1,012.5  | +19.0%          | 814.3  | -4.9%           |                                    |                                      | 62.3%   | 0.3%            |
|                      | <b>England</b>       | <b>563.8</b>                                      | <b>+8.9%</b>    | <b>6.0%</b>                          | <b>+57.9%</b>   |  |                 | <b>239.3</b>                               |              | <b>+72.5%</b>   | <b>40.9</b>   | <b>+83.4%</b>   | <b>453.2</b>                                   | <b>+82.1%</b>   | <b>799.9</b>                                   | <b>+58.7%</b>   |                                    | <b>134,680</b>                       | <b>45.1%</b>  | <b>0.5%</b>     |



# High level summary 4 - 20 Highest LTLAs by case rate in individuals aged 60 years and over

All indicators for the last 7 days (25 June 2021 to 01 July 2021)

| Region        | LTLA                  | Individuals tested per day per 100,000 population |                 | Percentage individuals test positive |                 | Percentage individual cases reporting symptoms |                 | Case rate per 100,000 population, all ages |              |                 | Case rate per 100,000 population aged 60 years and over |                 | Case rate per 100,000 population aged 11-16yrs |                 | Case rate per 100,000 population aged 17-21yrs |                 | Community outbreaks | Newly confirmed cases | Specimens tested with TaqPath assay | Cases with SGTF |                |                |
|---------------|-----------------------|---|-----------------|--------------------------------------|-----------------|--|-----------------|--|--------------|-----------------|---|-----------------|--|-----------------|--|-----------------|---------------------|-----------------------|-------------------------------------|-----------------|----------------|----------------|
|               |                       | 7-day moving average                              | 7-day change, % | Weekly                               | 7-day change, % | Weekly, Pillar 2 only                          | 7-day change, % | Weekly                                     | 3 week trend | 7-day change, % | Weekly  | 7-day change, % | Weekly   | 7-day change, % | Weekly   | 7-day change, % | Weekly              | 7-day change, %       | Last 7 days                         | Last 7 days     | Last 7 days, % | Last 7 days, % |
| West Midlands | Tamworth              | 725.5   | +75.8%          | 13.9%                                | +71.6%          |  |                 | 734.1                                      |              | +182.9%         | 193.6   | +516.6%         | 968.7  | +231.2%         | 3,398.4  | +71.8%          |                     |                       |                                     |                 | 66.7%          | 0.0%           |
| North West    | Hyndburn              | 703.7   | +0.2%           | 12.6%                                | +11.5%          |  |                 | 602.1                                      |              | +9.9%           | 185.2   | +20.0%          | 1,059.4  | -3.0%           | 1,321.2  | +41.5%          |                     |                       |                                     |                 | 61.2%          | 0.0%           |
| North West    | Blackburn with Darwen | 748.2   | -26.8%          | 8.9%                                 | +21.9%          |  |                 | 449.6                                      |              | -8.8%           | 180.3   | +51.5%          | 648.7  | -16.2%          | 753.9  | -13.8%          |                     |                       |                                     |                 | 62.3%          | 0.3%           |
| North East    | Newcastle upon Tyne   | 795.5   | +26.1%          | 13.1%                                | +37.9%          |  |                 | 712.0                                      |              | +74.0%          | 131.4   | +107.9%         | 1,034.4  | +116.1%         | 1,435.8  | +53.9%          |                     |                       |                                     |                 | 76.2%          | 0.8%           |
| North West    | Rossendale            | 622.1   | +4.3%           | 14.5%                                | +36.8%          |  |                 | 621.1                                      |              | +43.7%          | 130.1   | +77.0%          | 1,064.0  | +33.3%          | 1,547.9  | +82.8%          |                     |                       |                                     |                 | 61.0%          | 0.0%           |
| North West    | Burnley               | 724.2   | -3.0%           | 9.9%                                 | +17.9%          |  |                 | 502.7                                      |              | +15.8%          | 127.9   | +33.2%          | 1,164.9  | +83.3%          | 686.6  | -18.4%          |                     |                       |                                     |                 | 55.9%          | 0.0%           |
| North West    | Preston               | 668.9   | +0.9%           | 7.7%                                 | +10.0%          |  |                 | 359.1                                      |              | +10.5%          | 127.8   | +5.9%           | 538.8  | -3.5%           | 630.2  | +25.9%          |                     |                       |                                     |                 | 50.0%          | 0.0%           |
| North East    | Gateshead             | 719.0   | +32.6%          | 12.5%                                | +71.2%          |  |                 | 629.5                                      |              | +129.2%         | 125.3   | +306.8%         | 1,003.0  | +151.0%         | 1,827.8  | +83.8%          |                     |                       |                                     |                 | 75.4%          | 0.5%           |
| North West    | Rochdale              | 637.2   | +14.9%          | 10.8%                                | +36.7%          |  |                 | 488.3                                      |              | +62.3%          | 123.0   | +71.5%          | 1,344.6  | +103.6%         | 1,217.6  | +59.1%          |                     |                       |                                     |                 | 66.6%          | 0.3%           |
| North East    | County Durham         | 757.6   | +18.2%          | 11.3%                                | +52.7%          |  |                 | 584.8                                      |              | +77.8%          | 115.3   | +128.8%         | 1,178.1  | +147.5%         | 2,190.3  | +30.1%          |                     |                       |                                     |                 | 82.1%          | 0.0%           |
| North East    | Sunderland            | 699.7   | +27.1%          | 12.1%                                | +86.2%          |  |                 | 606.4                                      |              | +135.9%         | 114.9   | +180.2%         | 1,241.4  | +216.9%         | 1,903.9  | +81.3%          |                     |                       |                                     |                 | 75.0%          | 0.3%           |
| North West    | Oldham                | 573.1   | +16.7%          | 13.2%                                | +50.0%          |  |                 | 538.1                                      |              | +81.5%          | 109.2   | +89.6%          | 1,454.1  | +172.1%         | 964.1  | +51.1%          |                     |                       |                                     |                 | 68.2%          | 1.1%           |
| North West    | Manchester            | 693.8   | +11.9%          | 11.4%                                | +7.5%           |  |                 | 544.4                                      |              | +25.1%          | 106.8   | +17.0%          | 1,052.8  | +37.5%          | 795.6  | -7.0%           |                     |                       |                                     |                 | 64.5%          | 0.3%           |
| North West    | Wigan                 | 571.3   | +4.2%           | 12.6%                                | +23.5%          |  |                 | 515.1                                      |              | +31.6%          | 106.6   | +47.4%          | 1,205.7  | +44.8%          | 1,629.9  | +41.1%          |                     |                       |                                     |                 | 53.8%          | 0.0%           |
| North East    | North Tyneside        | 752.5   | +19.5%          | 11.2%                                | +27.3%          |  |                 | 586.8                                      |              | +50.8%          | 99.4  | +17.1%          | 1,136.8  | +40.2%          | 1,903.2  | +38.8%          |                     |                       |                                     |                 | 76.6%          | 0.3%           |
| North West    | Liverpool             | 553.8   | +9.3%           | 11.5%                                | +22.3%          |  |                 | 473.7                                      |              | +36.5%          | 93.8  | +23.9%          | 1,109.3  | +33.1%          | 987.7  | +24.2%          |                     |                       |                                     |                 | 59.7%          | 0.6%           |
| North West    | Bury                  | 572.1   | +9.5%           | 10.1%                                | +4.1%           |  |                 | 403.7                                      |              | +17.5%          | 92.5  | +23.5%          | 1,012.5  | +19.0%          | 814.3  | -4.9%           |                     |                       |                                     |                 | 62.3%          | 0.3%           |
| North East    | South Tyneside        | 670.9   | +42.0%          | 14.6%                                | +105.6%         |  |                 | 690.2                                      |              | +190.2%         | 88.3  | +299.5%         | 1,306.2  | +396.1%         | 3,108.7  | +152.2%         |                     |                       |                                     |                 | 76.8%          | 0.0%           |
| North East    | Hartlepool            | 501.0   | +22.5%          | 12.1%                                | +142.0%         |  |                 | 420.7                                      |              | +177.5%         | 87.0  | +75.1%          | 373.6  | +257.2%         | 2,090.5  | +232.2%         |                     |                       |                                     |                 | 87.9%          | 0.0%           |
| North West    | Salford               | 628.0   | -6.3%           | 11.5%                                | +26.4%          |  |                 | 502.3                                      |              | +21.1%          | 86.2  | +27.3%          | 919.7  | +39.8%          | 925.1  | -15.9%          |                     |                       |                                     |                 | 53.4%          | 0.2%           |
|               | <b>England</b>        | <b>563.8</b>                                      | <b>+8.9%</b>    | <b>6.0%</b>                          | <b>+57.9%</b>   |  |                 | <b>239.3</b>                               |              | <b>+72.5%</b>   | <b>40.9</b>   | <b>+83.4%</b>   | <b>453.2</b>                                   | <b>+82.1%</b>   | <b>799.9</b>                                   | <b>+58.7%</b>   |                     |                       |                                     | <b>134,680</b>  | <b>45.1%</b>   | <b>0.5%</b>    |

# High level summary 5 – Hospital indicators - England

Hospital indicators: high-level summary by region

|                          | New COVID-19 patients admitted to hospital |              |              | Number of COVID-19 patients in hospital |              |              | Mechanical ventilation beds occupied by COVID-19 patients |              |              |
|--------------------------|--|--------------|--------------|---|--------------|--------------|---|--------------|--------------|
|                          | 04 Jul 2021                                | 7-day change | 21-day trend | 04 Jul 2021                             | 7-day change | 21-day trend | 04 Jul 2021   | 7-day change | 21-day trend |
| <b>Total</b>             |  |              |              |   |              |              |   |              |              |
| England                  |  | 52.5%        |              |   | 30.3%        |              |   | 25.1%        |              |
| <b>By region</b>         |  |              |              |   |              |              |   |              |              |
| East Midlands            |  | 66.7%        |              |   | 26.5%        |              |   | 41.7%        |              |
| East of England          |  | 27.3%        |              |   | 10.4%        |              |   | 45.5%        |              |
| London                   |  | 50.0%        |              |   | 37.4%        |              |   | 37.7%        |              |
| North East               |  | 89.5%        |              |   | 88.6%        |              |   | 120.0%       |              |
| North West               |  | 34.5%        |              |   | 13.1%        |              |   | 1.0%         |              |
| South East               |  | 109.1%       |              |   | 45.5%        |              |   | 11.1%        |              |
| South West               |  | 37.5%        |              |   | 61.7%        |              |   | 30.0%        |              |
| West Midlands            |  | 79.2%        |              |   | 45.8%        |              |   | 13.8%        |              |
| Yorkshire and The Humber |  | 27.3%        |              |   | 21.0%        |              |   | 76.9%        |              |

NOTE: All values are 7-day averages rounded up to the nearest whole number. As a result of rounding, there may be a small discrepancy between the regional sum and the total England value. Relative changes on small numbers can result in a large percentage change.

**Source:** NHS England & Improvement COVID-19 Hospital Activity Data, from 07 June 2021 to 04 July 2021. Values in parentheses are change from the previous day. All values are 7-day averages, i.e. mean averages of daily values from the 7 days up to and including the date in the column heading; totals are presented as integers, which may lead to small discrepancies due to rounding. The '7-day change' columns reflect the difference in 7-day average values compared to the value one week prior. Scale within each 'trend' column is consistent across all regions, except for the total row, which is scaled independently. Produced by Joint Biosecurity Centre.



# High level summary - COVID-19 vaccination uptake by region, age and dose

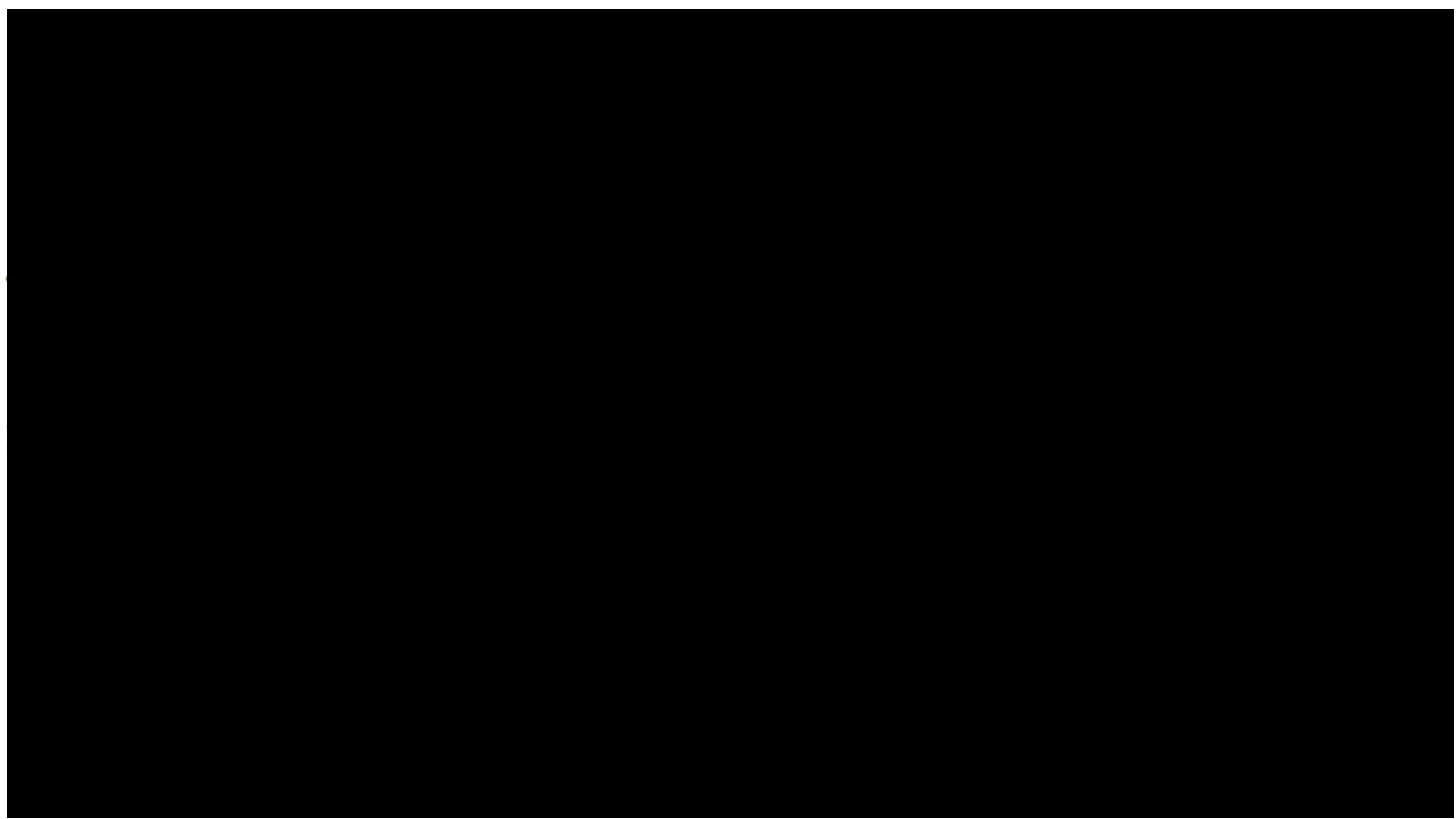
Data to 29 June 2021

| PHE Region of Residence | Dose 1      |                 |             |                 | Dose 2      |             |             |                 |
|-------------------------|-------------|-----------------|-------------|-----------------|-------------|-------------|-------------|-----------------|
|                         | All persons | ESR NHS Workers | CEV         | COVID19 At Risk | All persons | ESR         | CEV         | COVID19 At Risk |
| East Midlands           | 62.9% (1.9) | 91.7% (0.5)     | 92.9% (0.2) | 87.1% (0.5)     | 47.9% (1.2) | 85.5% (1.0) | 88.9% (0.4) | 80.3% (0.5)     |
| East of England         | 61.9% (2.0) | 91.3% (0.5)     | 93.2% (0.1) | 87.4% (0.4)     | 46.0% (1.4) | 84.8% (1.0) | 89.6% (0.4) | 80.9% (0.6)     |
| London                  | 49.7% (2.0) | 83.3% (0.6)     | 83.3% (0.3) | 75.0% (0.6)     | 32.3% (1.7) | 74.8% (1.4) | 76.7% (0.8) | 65.9% (0.8)     |
| North East              | 63.6% (1.7) | 94.0% (0.3)     | 94.5% (0.1) | 88.1% (0.4)     | 48.5% (1.6) | 89.0% (1.6) | 90.8% (0.4) | 80.5% (0.4)     |
| North West              | 60.7% (1.6) | 90.7% (0.4)     | 92.0% (0.1) | 84.3% (0.5)     | 45.5% (1.5) | 84.6% (1.3) | 87.1% (0.5) | 75.9% (0.5)     |
| South East              | 62.8% (1.8) | 92.1% (0.4)     | 93.9% (0.1) | 87.9% (0.4)     | 46.5% (1.4) | 85.8% (1.1) | 90.2% (0.4) | 81.2% (0.5)     |
| South West              | 65.8% (2.2) | 92.5% (0.5)     | 94.8% (0.1) | 89.0% (0.4)     | 49.6% (0.9) | 86.4% (0.7) | 91.8% (0.2) | 82.9% (0.4)     |
| West Midlands           | 59.0% (1.8) | 88.5% (0.4)     | 90.4% (0.2) | 83.9% (0.5)     | 44.7% (1.1) | 82.1% (1.0) | 85.8% (0.5) | 76.3% (0.5)     |
| Yorkshire and Humber    | 61.3% (1.7) | 91.6% (0.4)     | 92.2% (0.1) | 85.9% (0.4)     | 46.3% (1.5) | 85.5% (1.4) | 88.0% (0.5) | 78.4% (0.6)     |
| Unknown                 | 38.8% (2.5) | 85.5% (0.5)     | 77.7% (0.4) | 72.5% (0.6)     | 20.9% (0.8) | 66.0% (0.9) | 68.2% (0.5) | 60.5% (0.5)     |
| Total                   | 59.9% (1.9) | 90.2% (0.5)     | 91.2% (0.2) | 85.1% (0.5)     | 44.1% (1.4) | 83.6% (1.2) | 86.7% (0.5) | 77.7% (0.5)     |

Values in parentheses show absolute percentage change since 22 June 2021. ESR = electronic staff record; CEV = clinically extremely vulnerable. Please refer to the vaccination data guidance notes and caveats slides for further information.

**Data Source:** National Immunisation Management Service (NIMS)

**Note:** NIMS denominators include all persons and are not restricted to adults aged 18 years and above









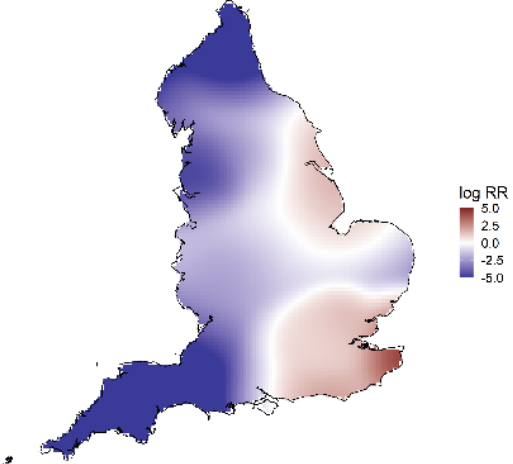




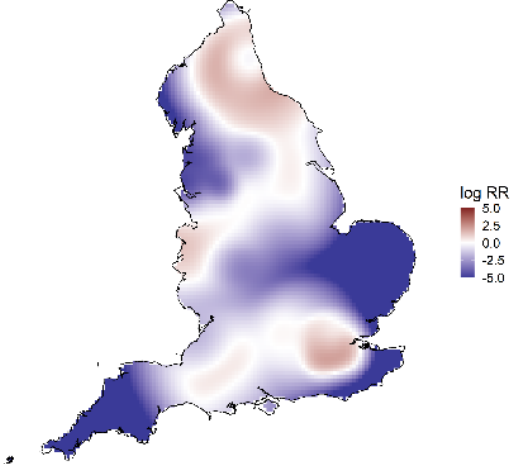
# Relative risk of having variant when infected in England by variant type

Data from 06 June 2021 to 26 June 2021

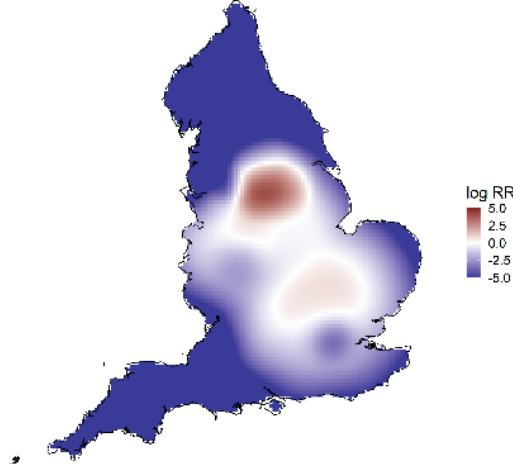
VOC-20DEC-02



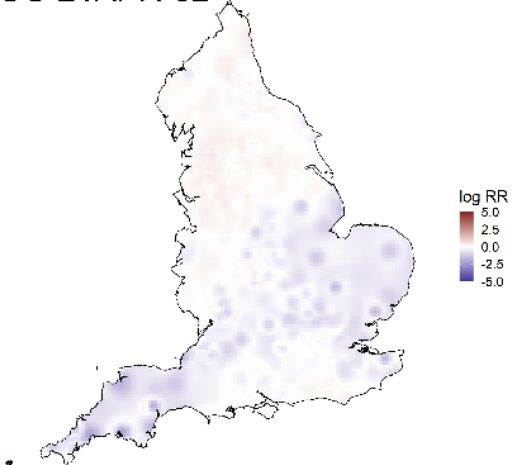
VOC-21JAN-02



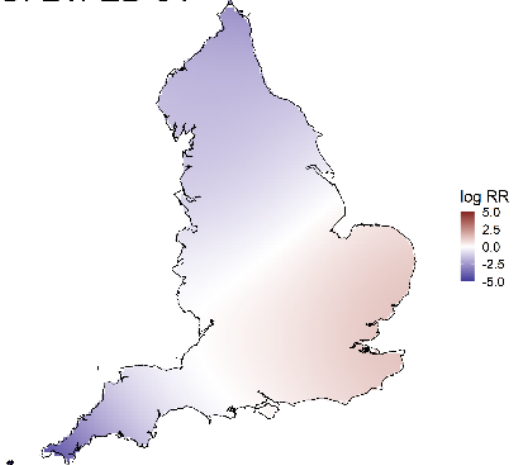
VUI-21MAY-01



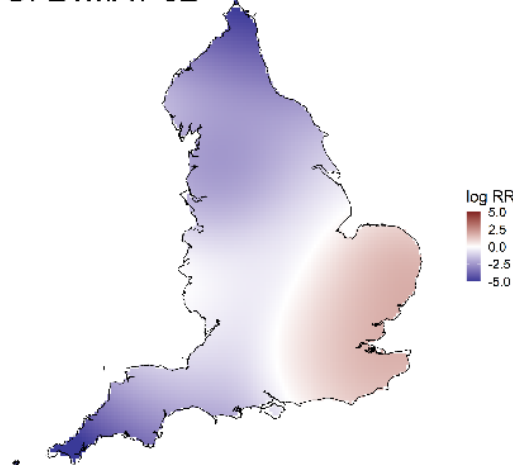
VOC-21APR-02



VUI-21FEB-04



VUI-21MAY-02



Areas where higher risk of a variant outcome is statistically significant (with 99% confidence) are shown by red contour lines. The spatial risk surface is estimated by comparing the smoothed intensity of variant cases and all cases as controls in the last 21 days across a defined geographical area to produce an intensity (or risk) ratio. If the ratio is  $\sim 1$ , this suggests that the risk of a variant outcome is unrelated to spatial location. Evidence of spatial variation in risk occurs where the intensities differ.

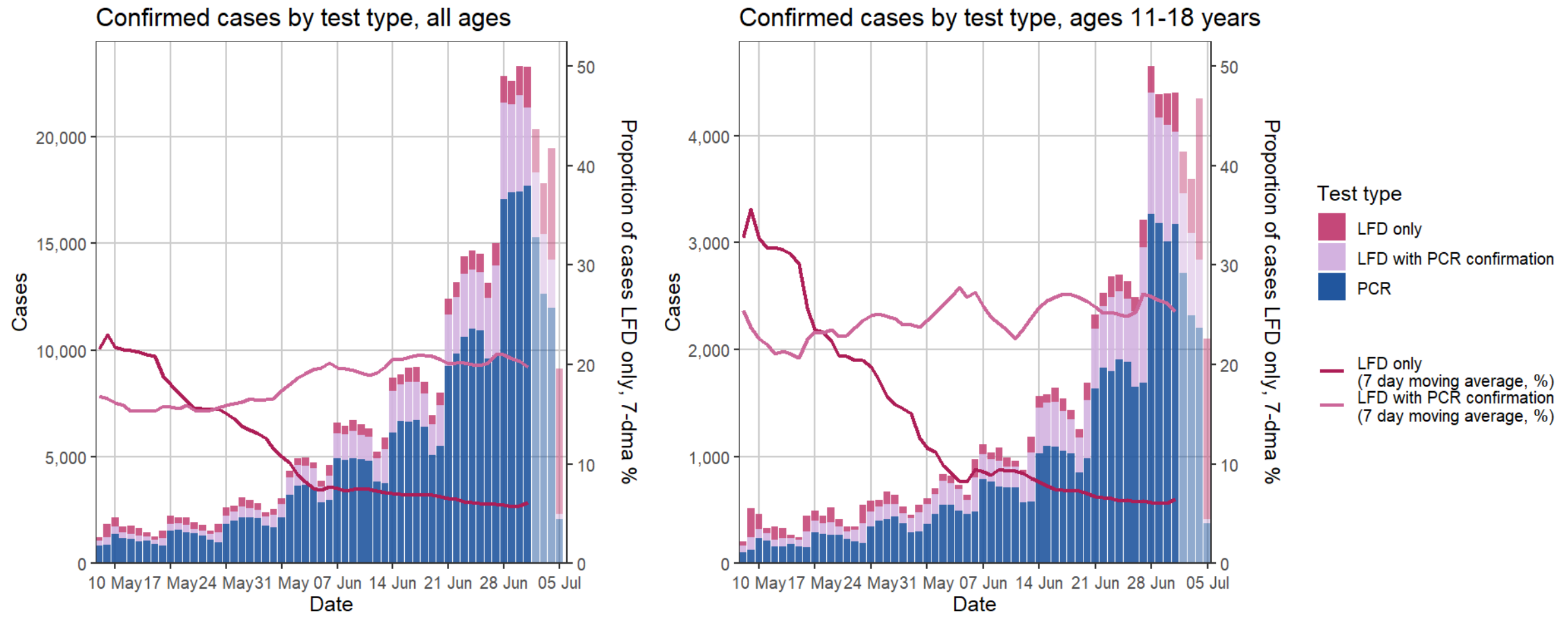
Ratio values  $>1$  (red) indicate an increased risk and values  $<1$  (blue) indicate lower risk. Relative risk was smoothed using an fixed bandwidth.

Data source: Genomically confirmed, genomically provisional and provisional aenotvina cases with no known travel association from National VAM line list as of 27/06/2021 - maps are only shown for variants with cases in the 21 day period.



# Case numbers by test type in England

Data reporting 08 May 2021 to 05 July 2021

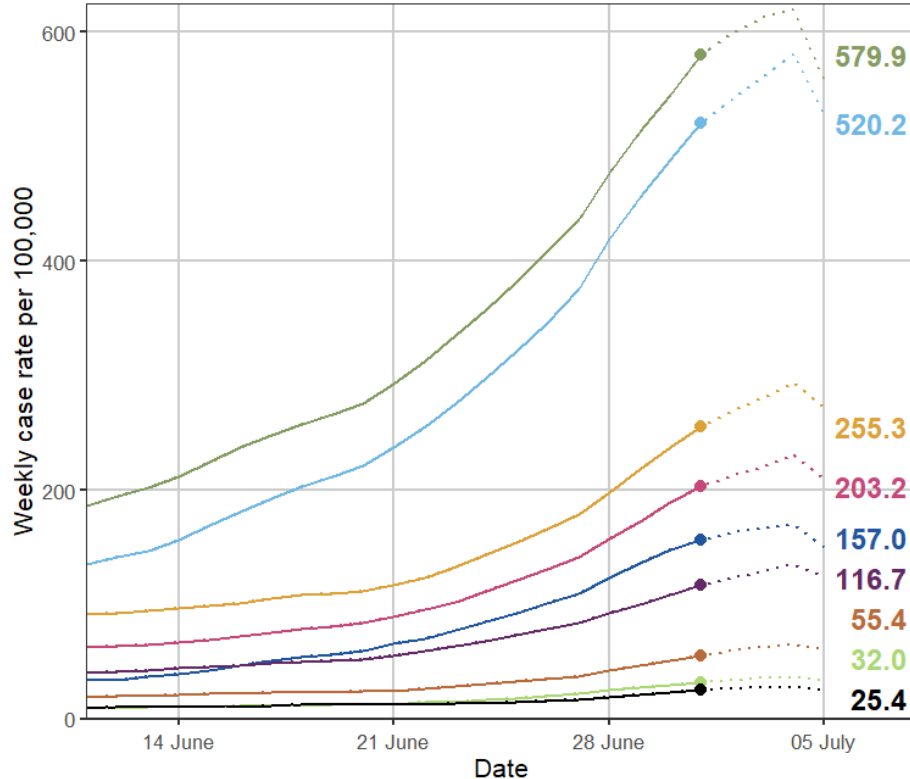


Data for the four most recent specimen dates is incomplete and will include cases for which PCR testing has not yet been reported and/or undertaken  
 PCR = First positive specimen was a PCR test.  
 LFD with PCR confirmation = Positive LFD with a positive PCR result within 3 days.  
 LFD only = Positive LFD with no PCR results within 3 days.  
 Data source: SGSS

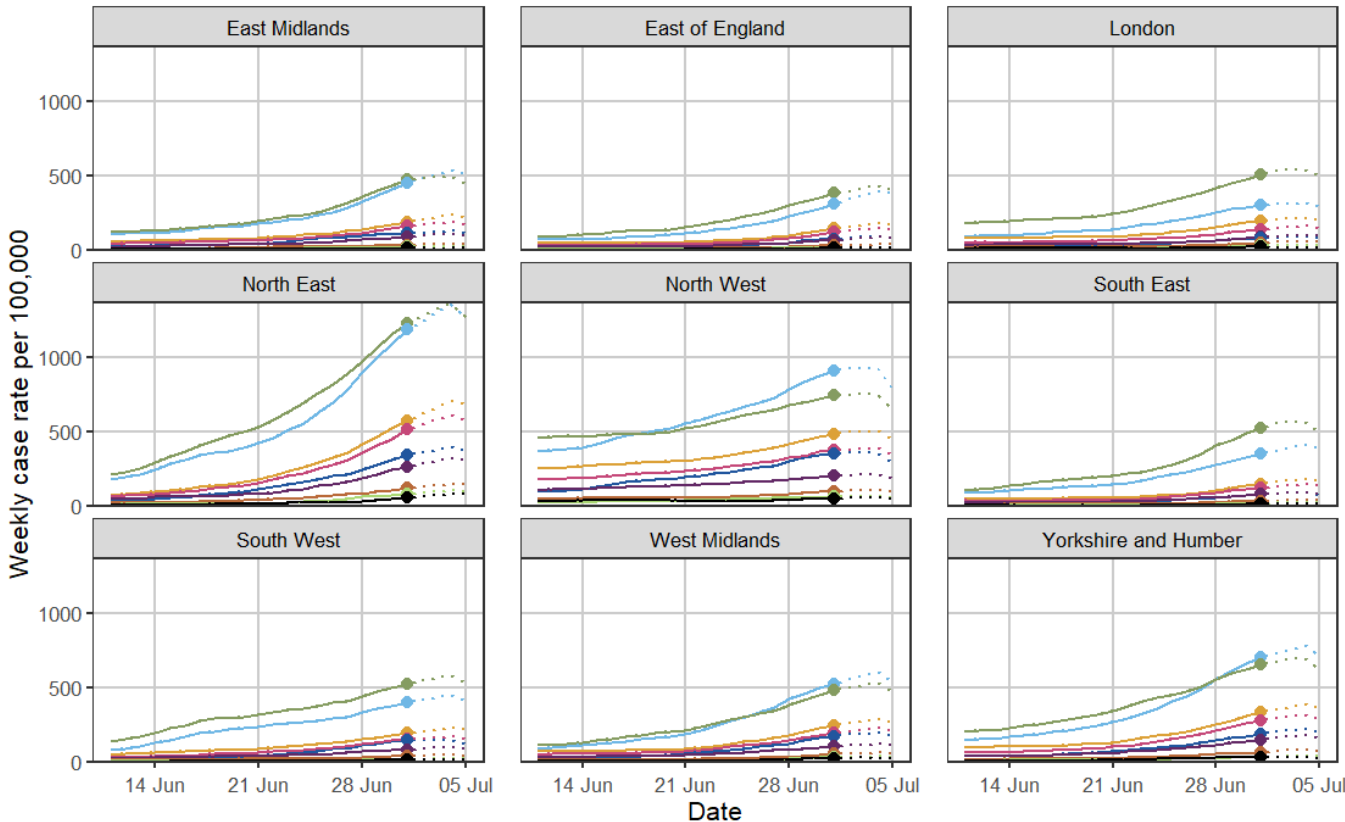
# Case rate in England across both pillars 1 and 2 (weekly)

Data up to 01 July 2021

Weekly case rate per 100,000 population by age group



Weekly case rate per 100,000 population by age group



Age group, yrs

- 0-9
- 10-19
- 20-29
- 30-39
- 40-49
- 50-59
- 60-69
- 70-79
- 80+

Labels show weekly case rate for 25 June 2021 to 01 July 2021  
Dashed lines indicate period with provisional data

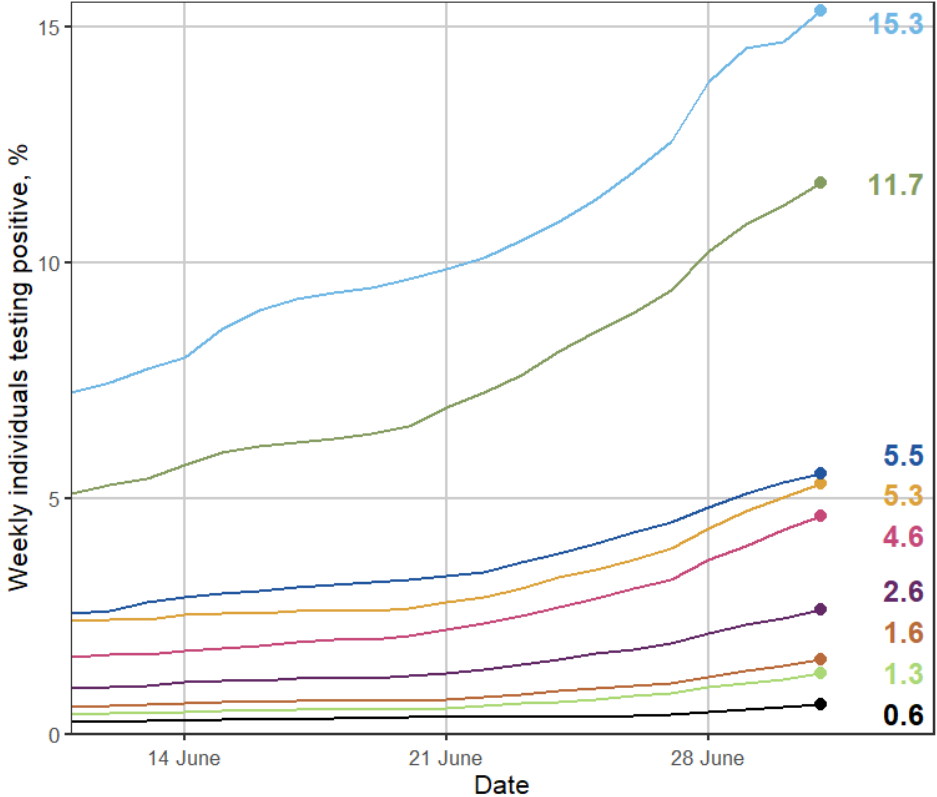
Dashed lines indicate period with provisional data



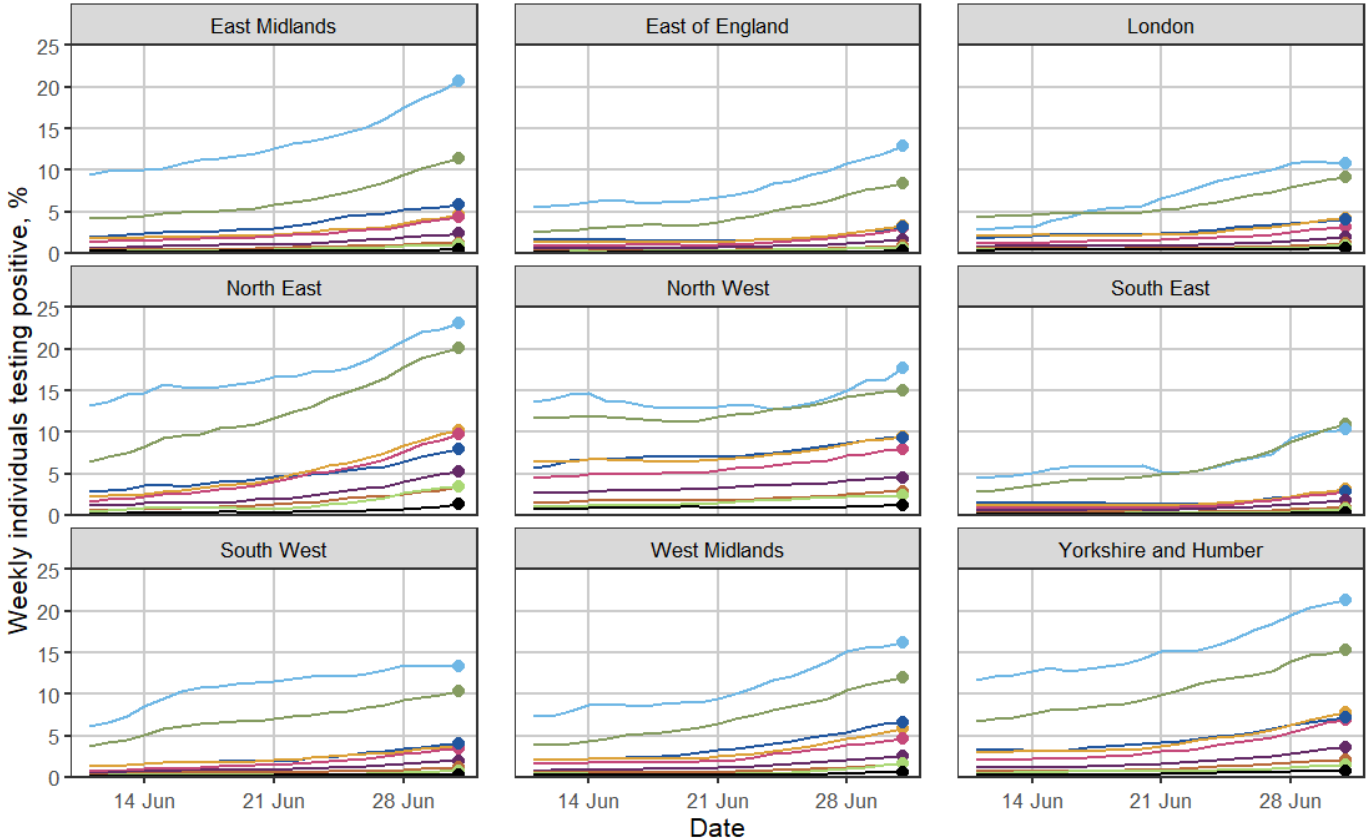
# Percentage of individuals testing positive in England across both pillars 1 and 2 (weekly)

Data up to 01 July 2021

Weekly individual test positivity, %, by age group



Weekly individual test positivity, %, by age group



Age group, yrs

- 0-9
- 10-19
- 20-29
- 30-39
- 40-49
- 50-59
- 60-69
- 70-79
- 80+

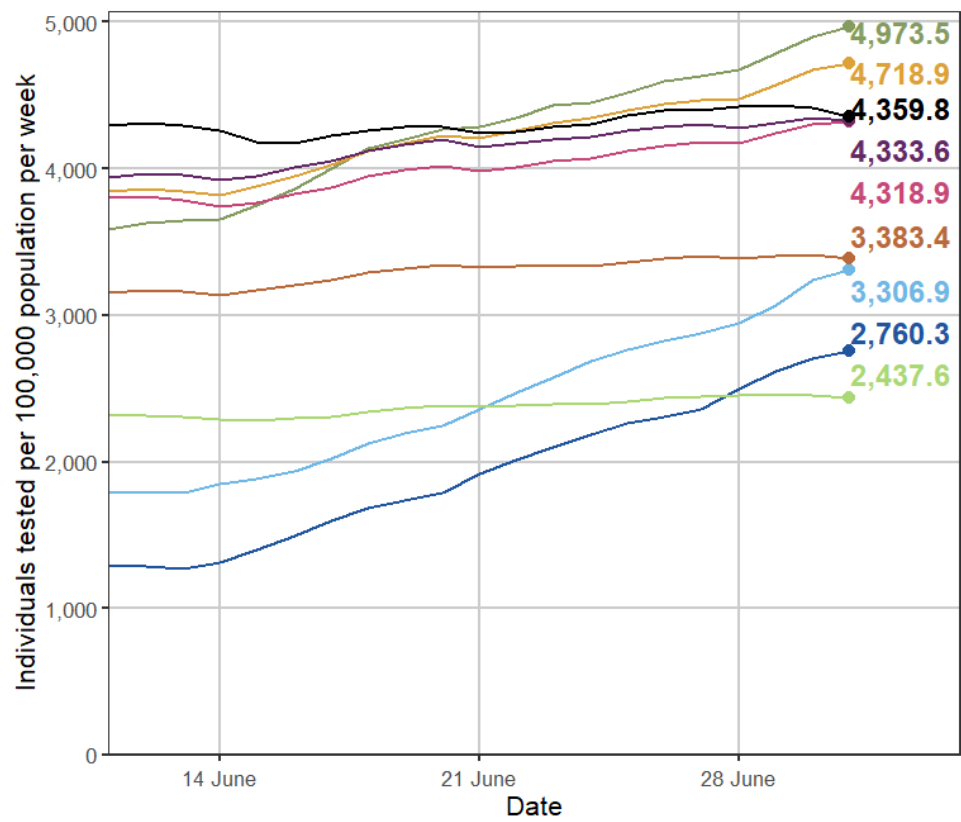
Labels show positivity rate for 25 June 2021 to 01 July 2021.  
Excludes LFD tests

Excludes LFD tests

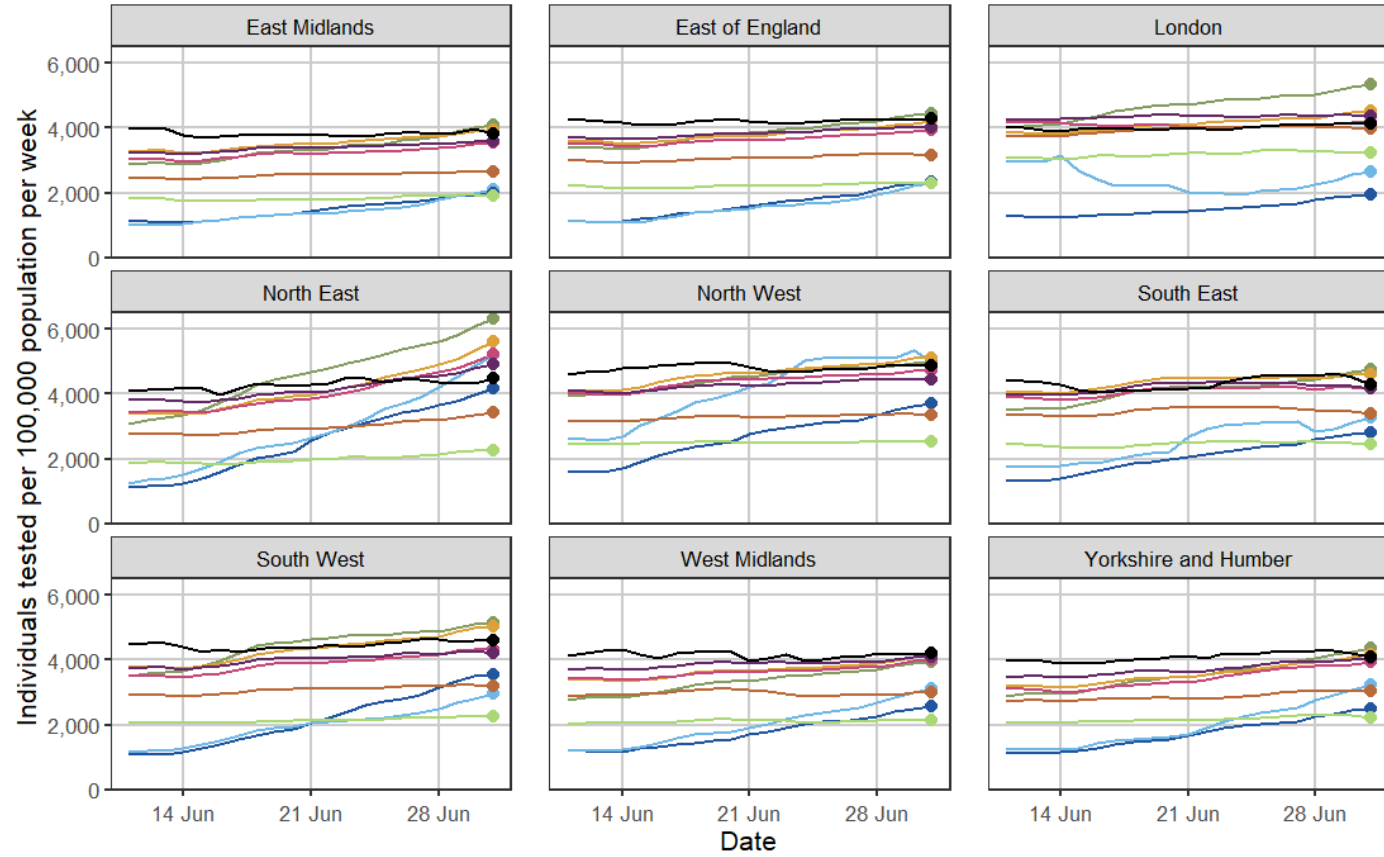
# Individuals tested in England across both pillars 1 and 2 (weekly)

Data up to 01 July 2021

Individuals tested per 100,000 population



Individuals tested per 100,000 population



Age group, yrs

- 0-9
- 20-29
- 40-49
- 60-69
- 80+
- 10-19
- 30-39
- 50-59
- 70-79

Labels show test rate for 25 June 2021 to 01 July 2021.  
Excludes LFD tests

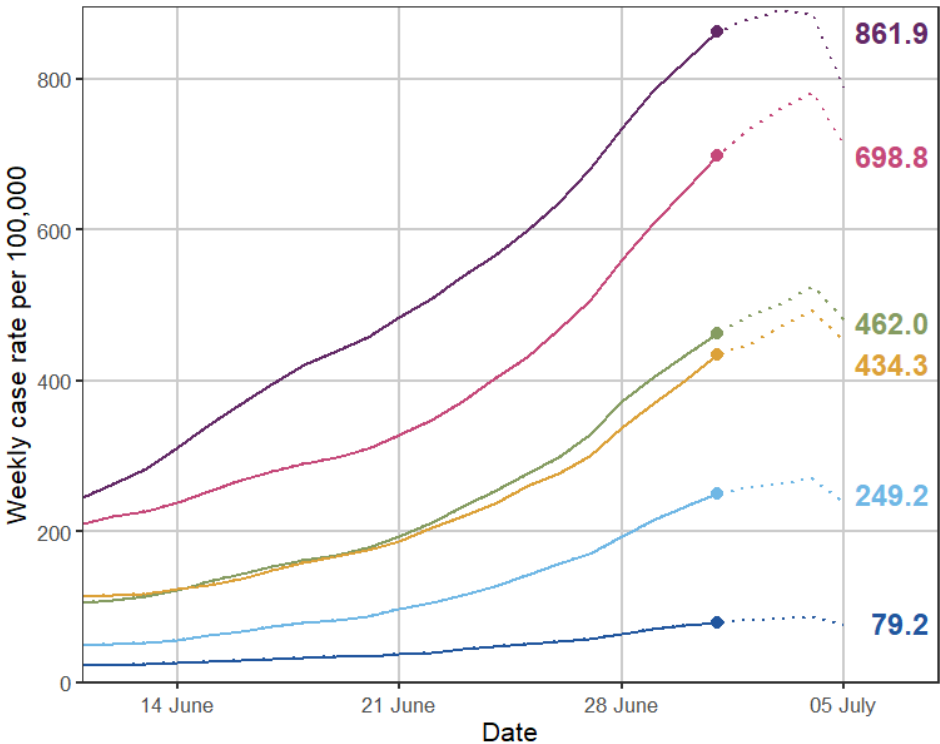
Excludes LFD tests



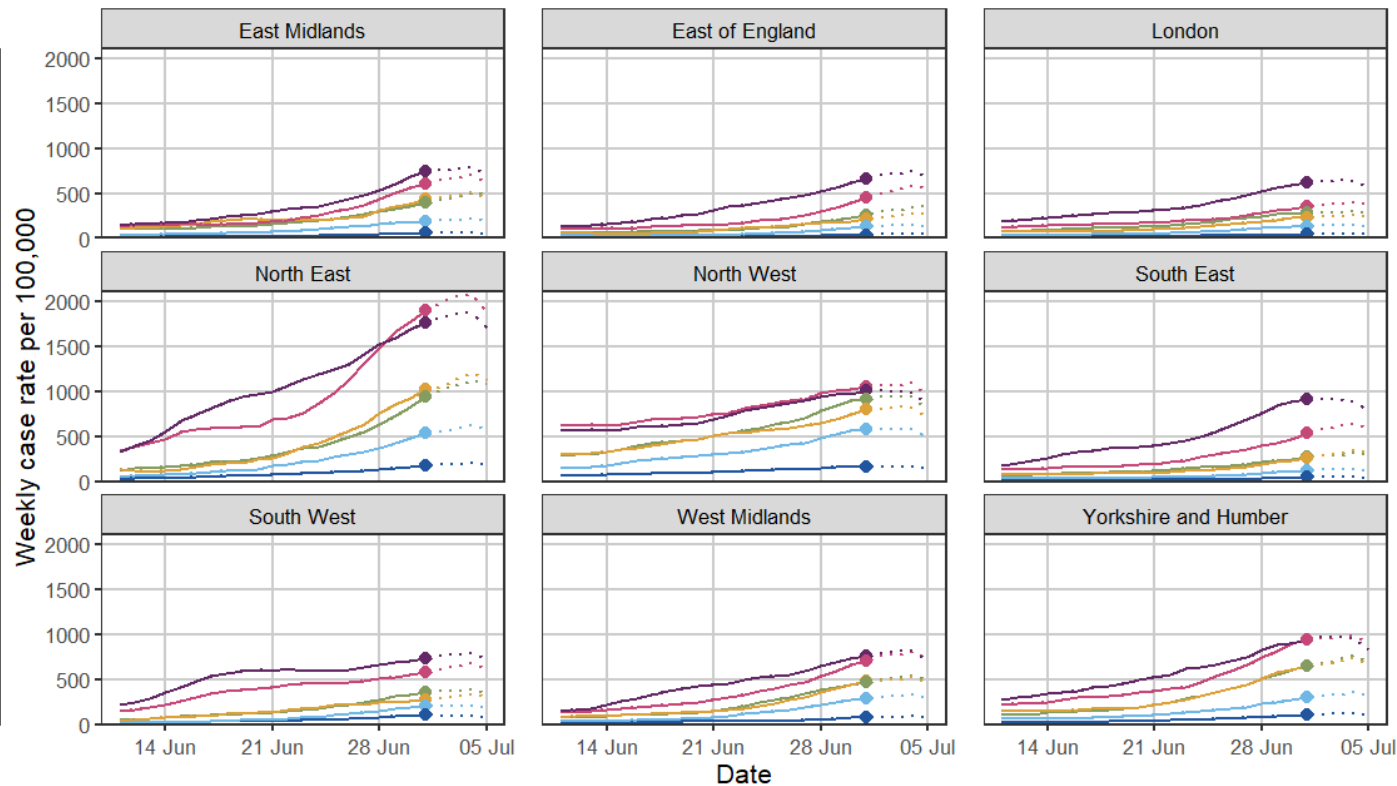
# Case rate in England across both pillars 1 and 2 (weekly) - young people

Data up to 01 July 2021

Weekly case rate per 100,000 population by age group (0 to 21 year olds)



Weekly case rate per 100,000 population by age group (0 to 21 year olds)



Age group, yrs  
 ● 0-4 ● 11-14 ● 17-18  
 ● 5-10 ● 15-16 ● 19-21

Labels show weekly case rate for 25 June 2021 to 01 July 2021  
 Dashed lines indicate period with provisional data

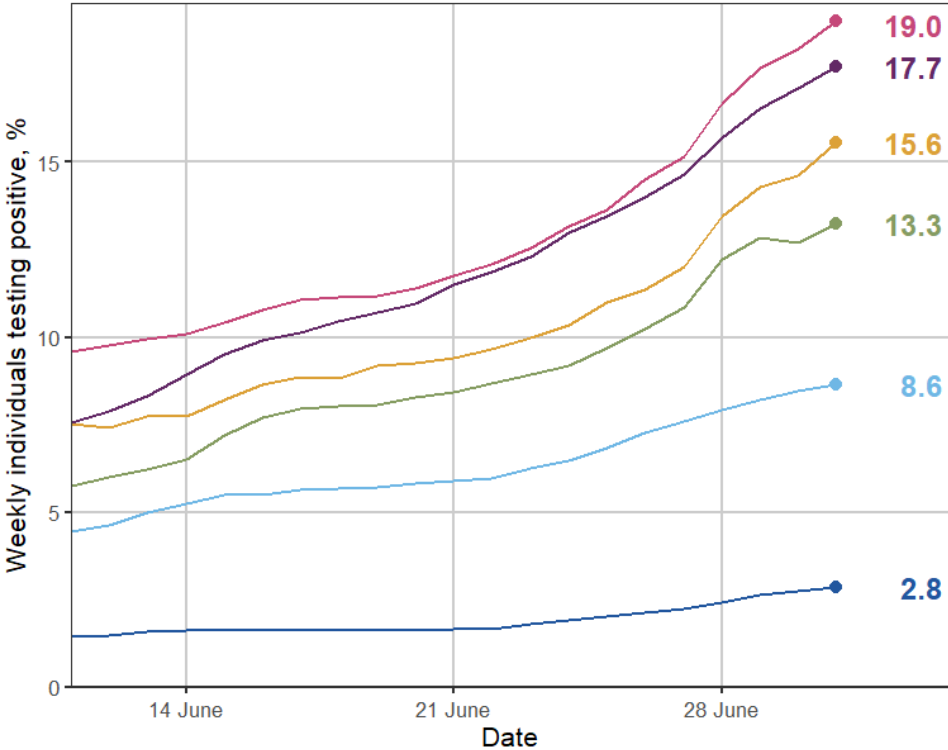
Dashed lines indicate period with provisional data



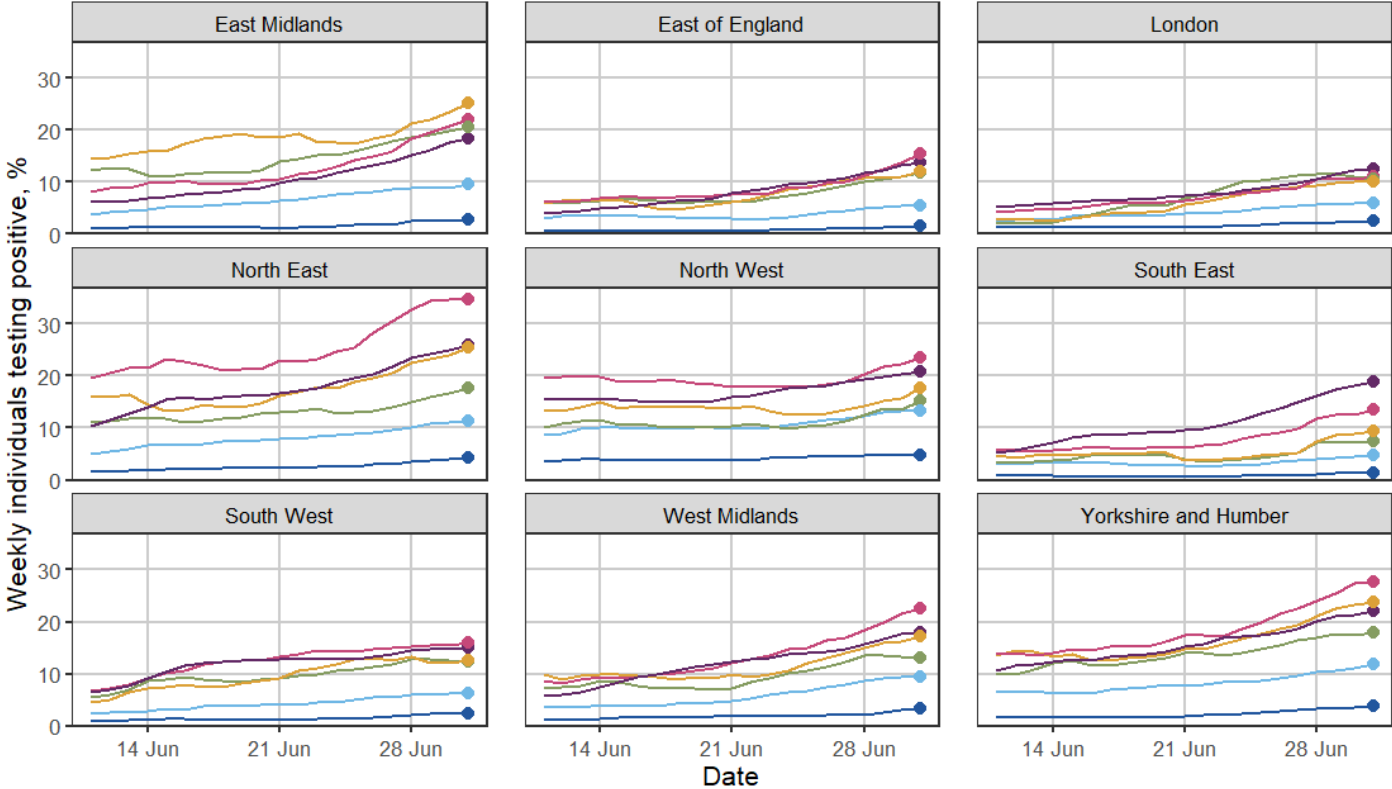
# Percentage of individuals testing positive in England across both pillars 1 and 2 (weekly) - young people

Data up to 01 July 2021

Weekly individual test positivity, %, by age group (0 to 21 year olds)



Weekly individual test positivity, %, by age group (0 to 21 year olds)



Age group, yrs  
 ● 0-4 ● 11-14 ● 17-18  
 ● 5-10 ● 15-16 ● 19-21

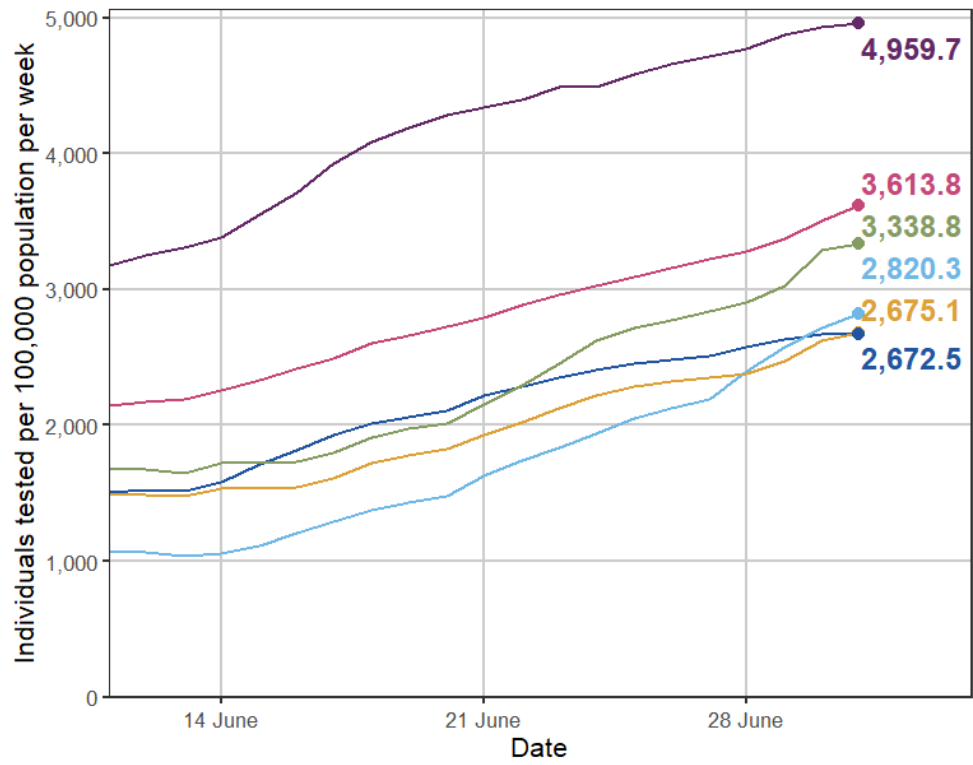
Labels show positivity rate for 25 June 2021 to 01 July 2021. Excludes LFD tests

Excludes LFD tests

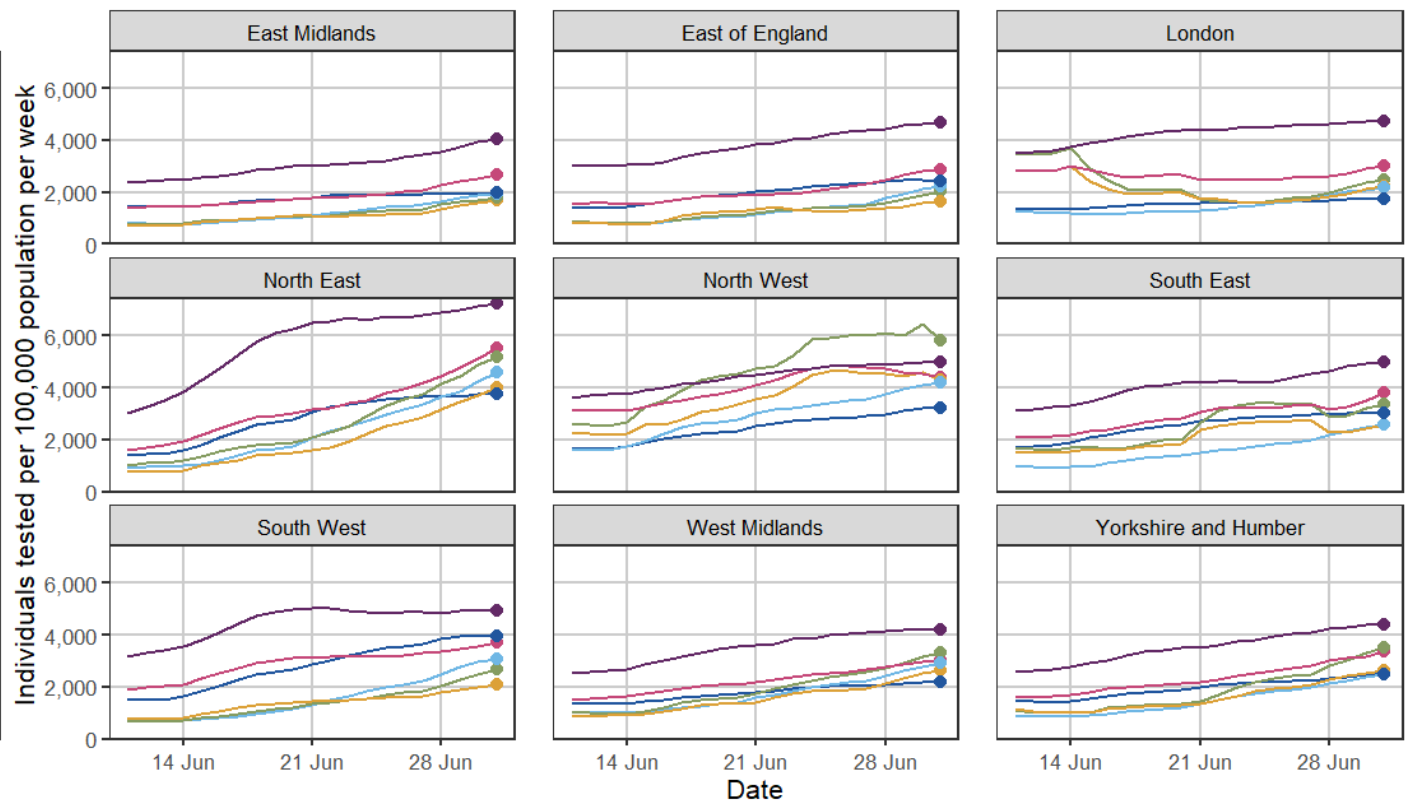
# Individuals tested in England across both pillars 1 and 2 (weekly) - young people

Data up to 01 July 2021

Individuals tested per 100,000 population (0 to 21 year olds)



Individuals tested per 100,000 population (0 to 21 year olds)



Age group, yrs

- 0-4
- 11-14
- 17-18
- 5-10
- 15-16
- 19-21

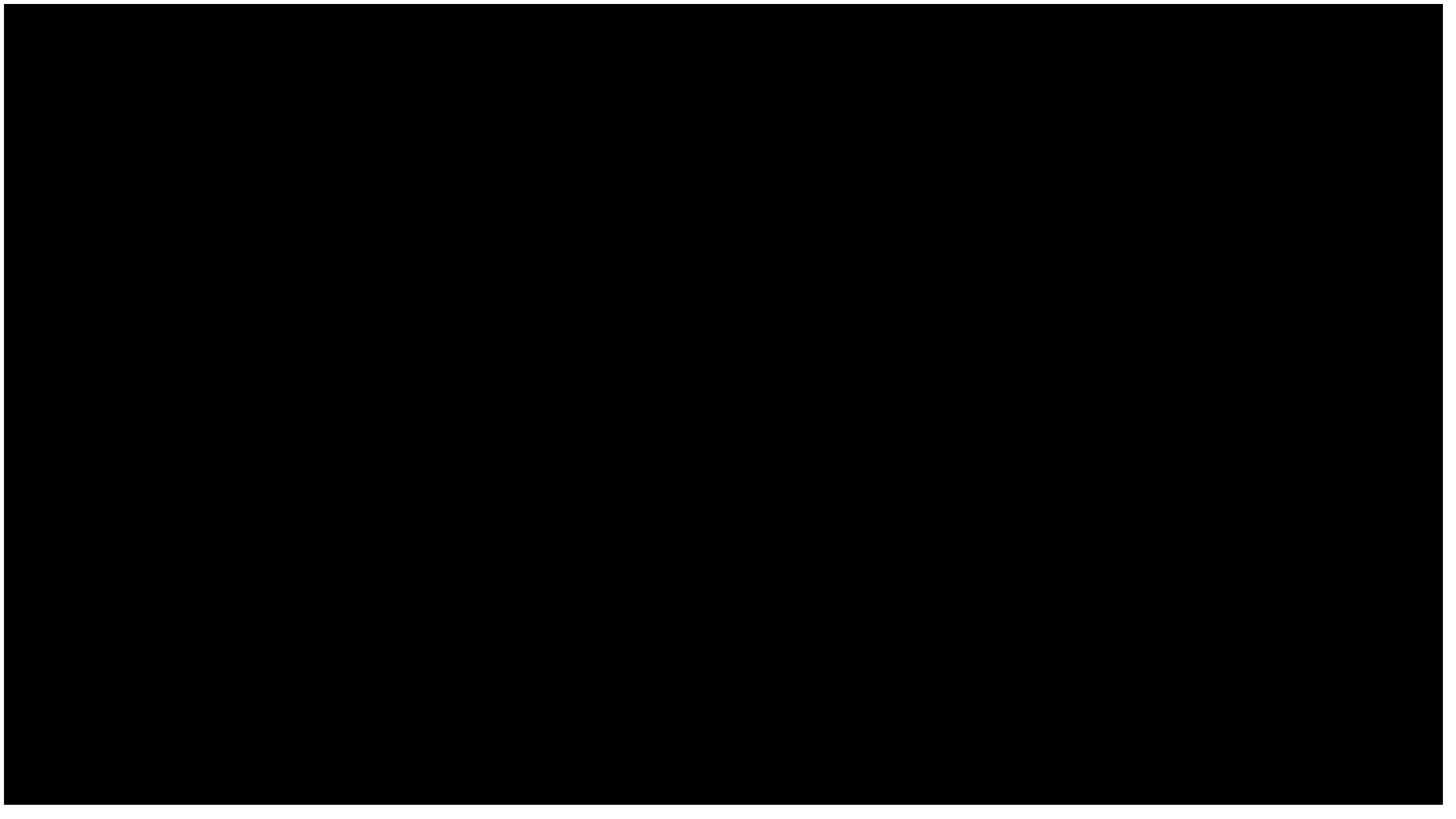
Labels show weekly testing rate for 25 June 2021 to 01 July 2021.  
Excludes LFD tests

Excludes LFD tests











# Percentage prevalence of COVID-19 across England and Government Office regions - table

Date of report 2 July 2021 by PHE Joint Modelling Cell

## Methodology

Prevalence estimates were generated by the Cambridge real-time model on **25 June 2021** using data up to **19 June 2021**.

The percentage prevalence of COVID-19 infections in the regional populations are rated using the following scale:

- Low prevalence: less than 0.5%
- Medium prevalence: 0.5% to, but not including, 2%
- High prevalence: 2% and above.

These estimates are subject to, sometime significant, revision on a weekly basis. The underpinning model relies on death data which is subject to a reporting lag. In the weeks surrounding the implementation and relaxation of restrictions, it often takes a while for the system to settle, to account for the data lag and changes in mobility patterns. All prevalence estimates are reported as percentages, the values in parentheses represent the 5<sup>th</sup> and 95<sup>th</sup> percentiles respectively.

Further details on the Cambridge real-time model can be found [here](#)

| Geography                | 25/06/2021        | 02/07/2021        | 09/07/2021        |
|--------------------------|-------------------|-------------------|-------------------|
| England                  | 0.32 (0.29, 0.36) | 0.32 (0.27, 0.38) | 0.31 (0.25, 0.39) |
| North East               | 0.45 (0.32, 0.65) | 0.43 (0.27, 0.71) | 0.40 (0.22, 0.75) |
| Yorkshire and The Humber | 0.29 (0.21, 0.40) | 0.28 (0.18, 0.43) | 0.26 (0.15, 0.45) |
| North West               | 0.45 (0.33, 0.63) | 0.47 (0.30, 0.76) | 0.47 (0.27, 0.68) |
| East Midlands            | 0.35 (0.26, 0.49) | 0.33 (0.22, 0.52) | 0.30 (0.18, 0.53) |
| West Midlands            | 0.29 (0.21, 0.42) | 0.28 (0.18, 0.46) | 0.26 (0.15, 0.48) |
| East of England          | 0.29 (0.20, 0.41) | 0.27 (0.17, 0.44) | 0.26 (0.14, 0.47) |
| London                   | 0.23 (0.17, 0.31) | 0.21 (0.14, 0.32) | 0.18 (0.11, 0.31) |
| South East               | 0.19 (0.14, 0.27) | 0.19 (0.13, 0.30) | 0.19 (0.11, 0.32) |
| South West               | 0.43 (0.31, 0.62) | 0.45 (0.28, 0.74) | 0.46 (0.25, 0.84) |

## Revisions of note

Estimates have been revised down slightly due to the revision of the ONS estimates.

# Estimated Prevalence by Region

## ONS Coronavirus (COVID-19) Infection Survey (02 July)

In England, the percentage of people testing positive for coronavirus (COVID-19) continued to increase in the week ending 26 June 2021; we estimate that 211,100 people within the community population in England had COVID-19 (95% credible interval: 185,200 to 239,300), equating to around 1 in 260 people.

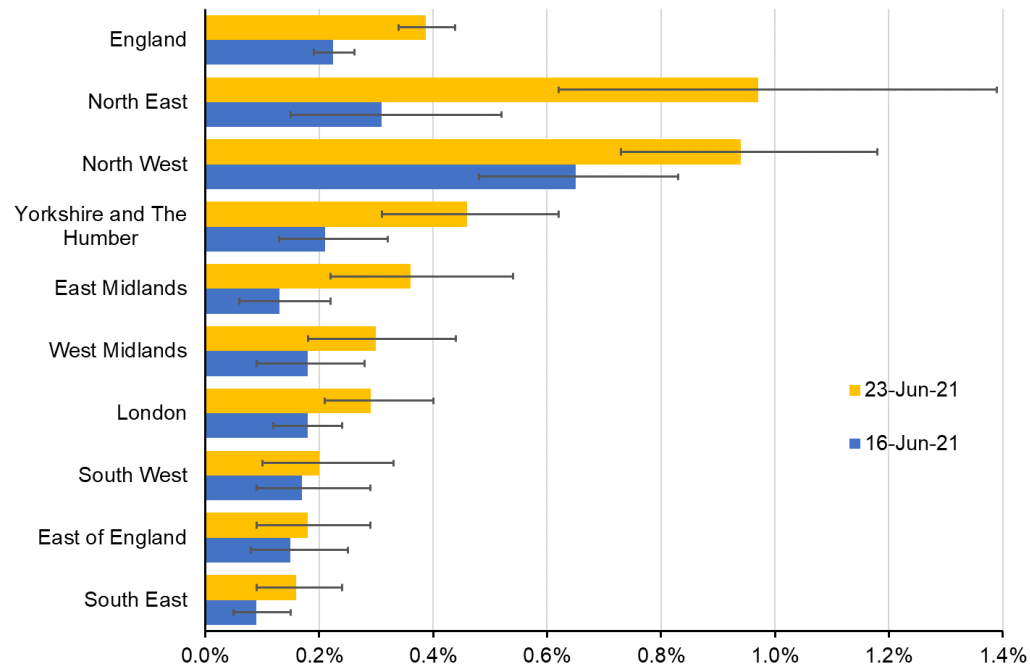
In the week ending 26 June 2021, the percentage of people testing positive has increased in all regions except the East of England and the South West. In the East of England and the South West, rates have increased in the most recent two weeks, but trends are uncertain in the most recent week.

## REACT-1 round 12 report (17 June)

Between rounds 11 and 12, national prevalence increased from 0.10% (0.08%, 0.13%) to 0.15% (0.12%, 0.18%). During round 12, we detected exponential growth with a doubling time of 11 (7.1, 23) days and an R number of 1.44 (1.20, 1.73).

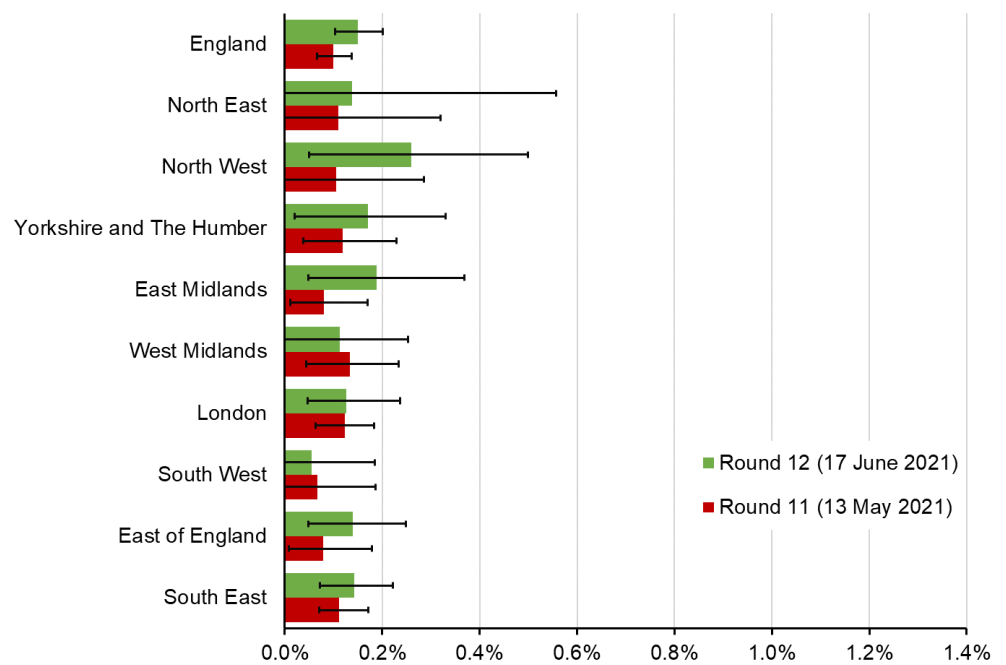
The highest prevalence was found in the North West at 0.26% (0.16%, 0.41%) compared to 0.05% (0.02%, 0.12%) in the South West. In the North West, the locations of positive samples suggested a cluster in Greater Manchester and the east Lancashire area.

ONS (COVID-19) Infection Survey- Prevalence by region



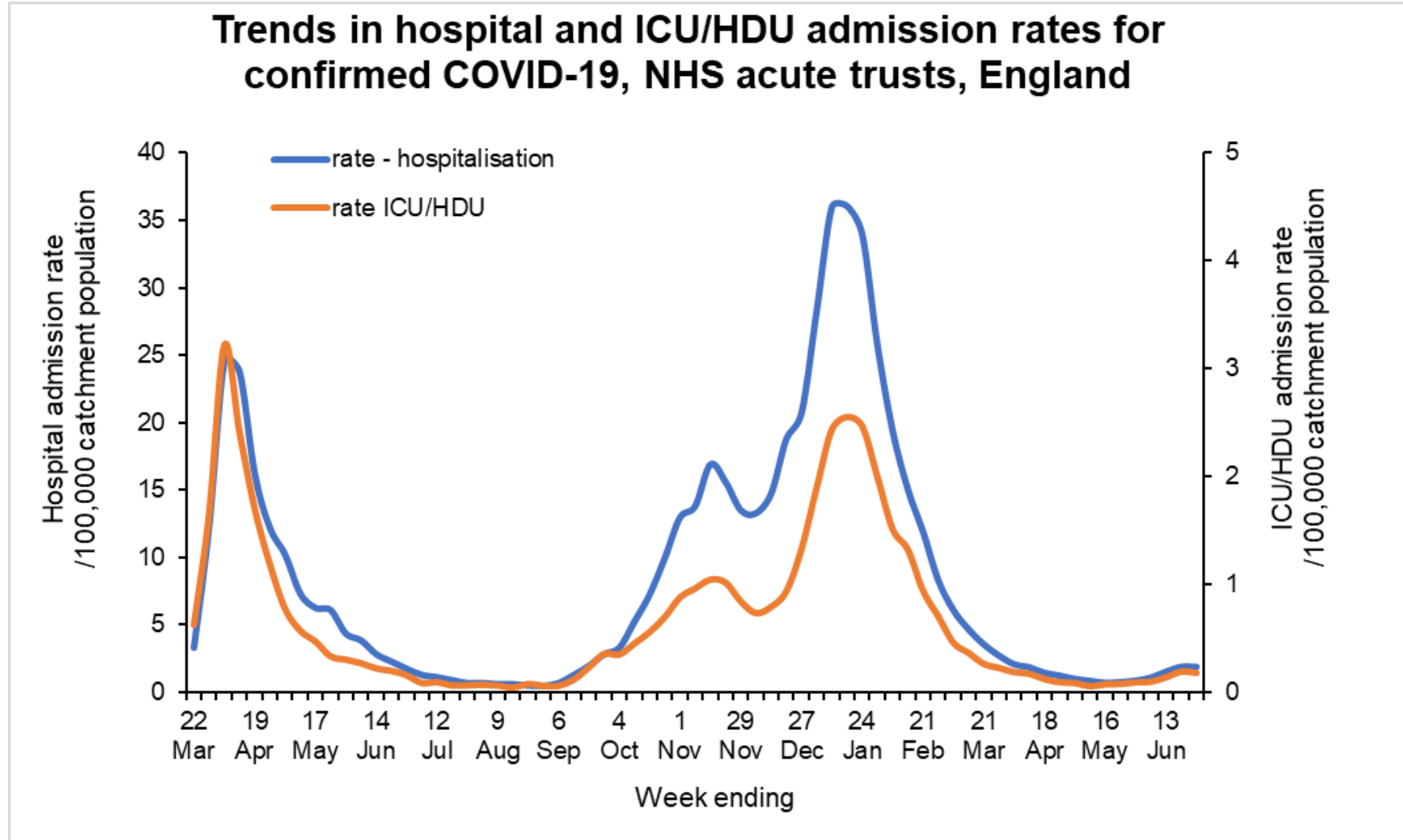
Coronavirus (COVID-19) Infection Survey, UK: 02 July 2021

REACT-1 study - Prevalence by region



REACT-1 round 12 final report from 17/06/21.

# Hospitalisations national trends



Hospital admissions refers to admissions to all levels of care inclusive of ICU/HDU admissions



