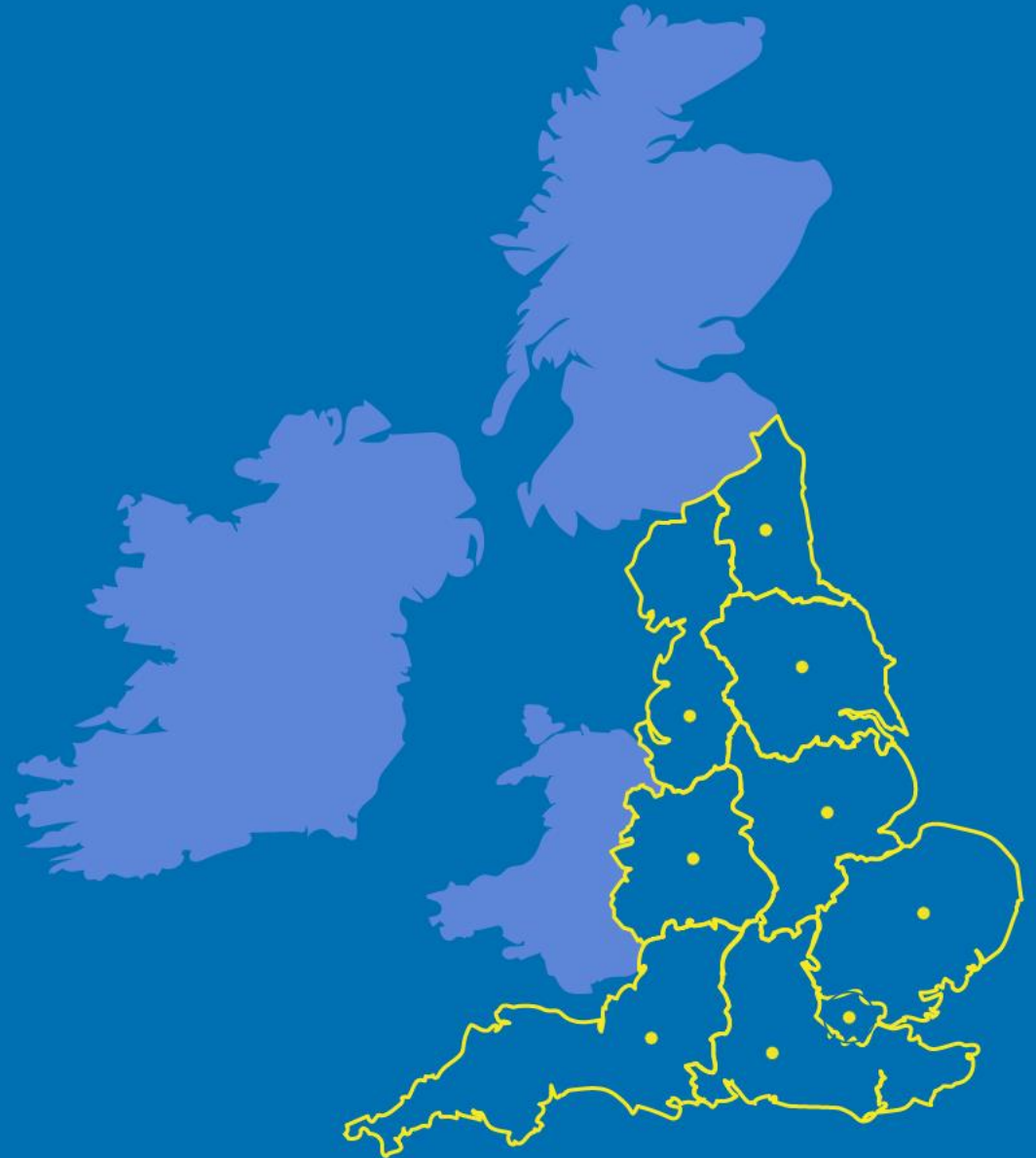


CORONAVIRUS **SITUATIONAL** **AWARENESS** Summary

date: 16 November 2020

Appendix



Contents

This situational awareness summary report appendix:

- Local authority information
 - Map Case rates
 - Map of Positivity in testing
 - Map Testing rates
- Charts of case rate, Positivity and testing across selected age groups
- [REDACTED]
- Hospitalisation
- Mortality
- [REDACTED]
- Hospitalisation
- Contact tracing
- [REDACTED]
- Outbreak reports
 - Overall by geography
 - [REDACTED]
 - Other settings
- Acute respiratory infections
- Weekly positivity for other respiratory viruses

Please note:

13/10/2020 - denominator data for case and testing rates have been **updated to 2019 mid-year population estimates**.

20/10/20 - **PHE has adjusted its approach to test positivity and testing rate metrics**. Previously, any repeat tests for individuals since pandemic onset had been deduplicated. As the likelihood of individuals being tested multiple times has increased over time, test positivity and testing rate data are now deduplicated within each 7-day window. This change has been made in all OST outputs as of **20/10/2020** and applied retrospectively.

16/11/20 - *PHE has updated the way it records the location of people who test positive or negative for COVID-19. It now **prioritises addresses given at the point of testing over the details registered on a patient's NHS Summary Care Record**. This better reflects the distribution of cases and testing. However, it may give rise to differences in previously reported numbers of cases and rates in some areas. The change has been retrospectively applied to tests carried out from 1 September 2020, and data reports were updated to reflect this change on **16 November 2020**.*

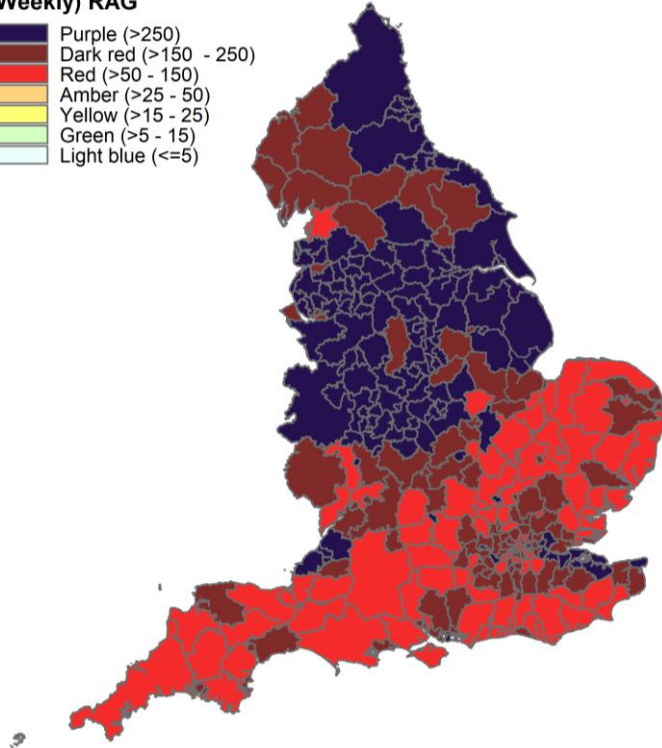
Throughout the SAR:

Lower tier local authorities is used to represent local authority districts, unitary authorities, metropolitan district and London boroughs,
Upper tier local authorities is used to represent counties, metropolitan counties, London boroughs and unitary authorities

Average weekly case rates per 100,000 population by LA

Data for specimens taken between 5 November and 11 November (7 day) and 29 October and 11 November (14 day)

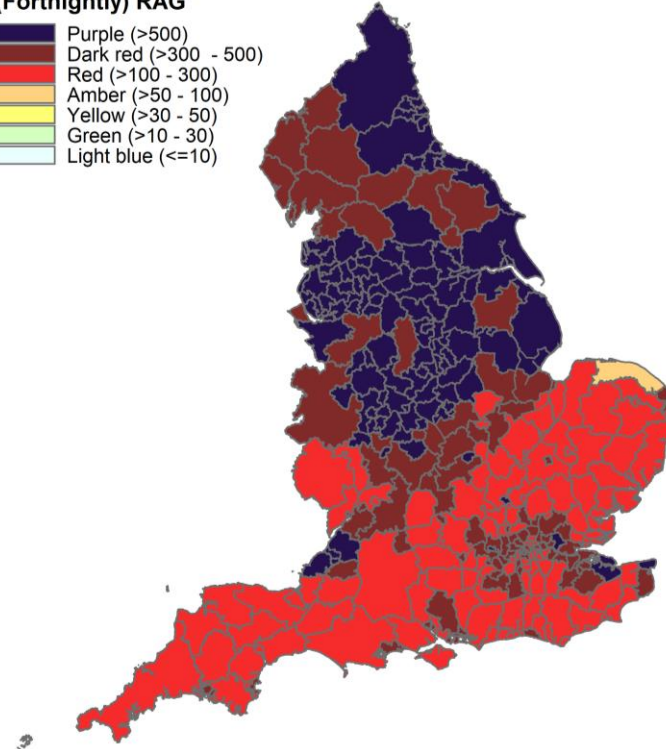
**Case rate per 100,000 population
(Weekly) RAG**



Contains Ordnance Survey data © Crown copyright and database right 2020
Contains National Statistics data © Crown copyright and database right 2020

Local Authorities with the highest rate			
	Rate		Rate
Kingston upon Hull, City of	782.6	North East Lincolnshire	568.4
Oldham	634.7	Bradford	551.3
Blackburn with Darwen	606.6	Rochdale	549.9
Scarborough	605.9	Stoke-on-Trent	541.4
Kirklees	585.3	Dudley	535.5

**Case rate per 100,000 population
(Fortnightly) RAG**



Contains Ordnance Survey data © Crown copyright and database right 2020
Contains National Statistics data © Crown copyright and database right 2020

Local Authorities with the highest rate			
	Rate		Rate
Oldham	1436	Wigan	1143.1
Kingston upon Hull, City of	1425.4	Kirklees	1142.4
Blackburn with Darwen	1348.1	Bradford	1130.7
North East Lincolnshire	1190.1	Bury	1128.9
Rochdale	1165.9	Salford	1089.1

Cumulative case rates (up to 11 November 2020)

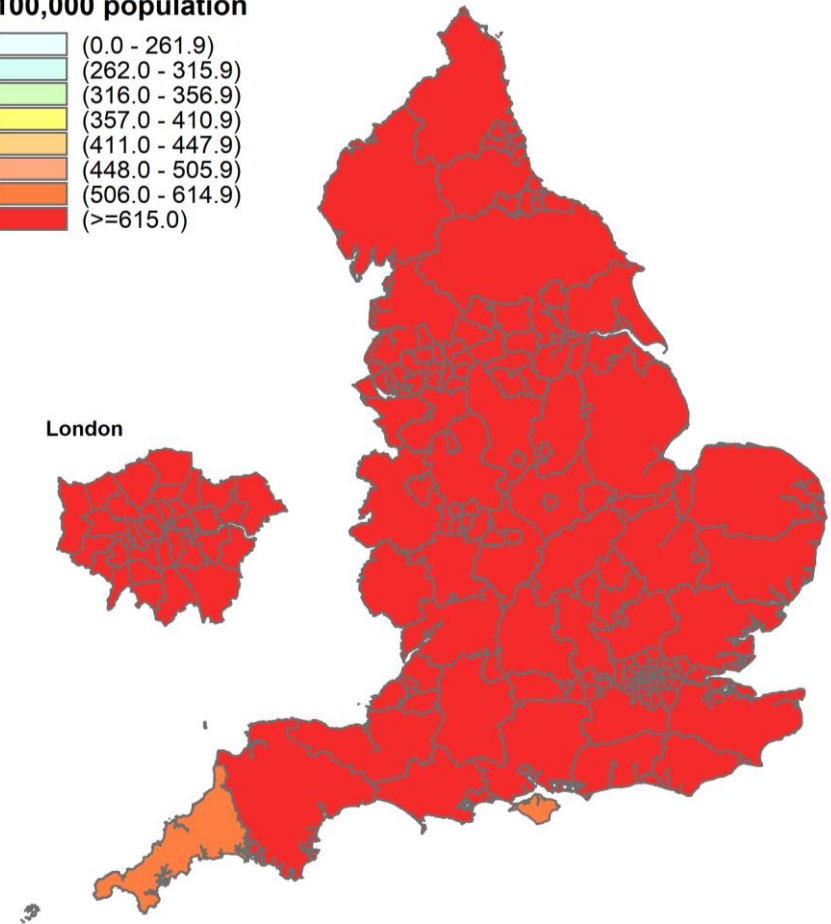
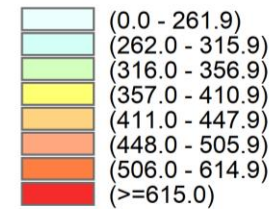
Cumulative rate of Pillar 1 and Pillar 2 COVID-19 cases (per 100,000) by upper-tier local authority in England* (n=1,123,511)

Excludes 17,320 COVID-19 cases for whom geographical information is to be confirmed.

Local Authorities with the highest cumulative rate

	Rate
Blackburn with Darwen	5595.3
Oldham	5431.2
Manchester	5031.3
Rochdale	4845.1
Knowsley	4805.7
Nottingham	4624.8
Salford	4579.4
Bradford	4557.6
Bolton	4549.5
Newcastle upon Tyne	4517.5
Liverpool	4467.9
Bury	4410.7
Wigan	4363.1
Leicester	4084.7
Tameside	4048.7

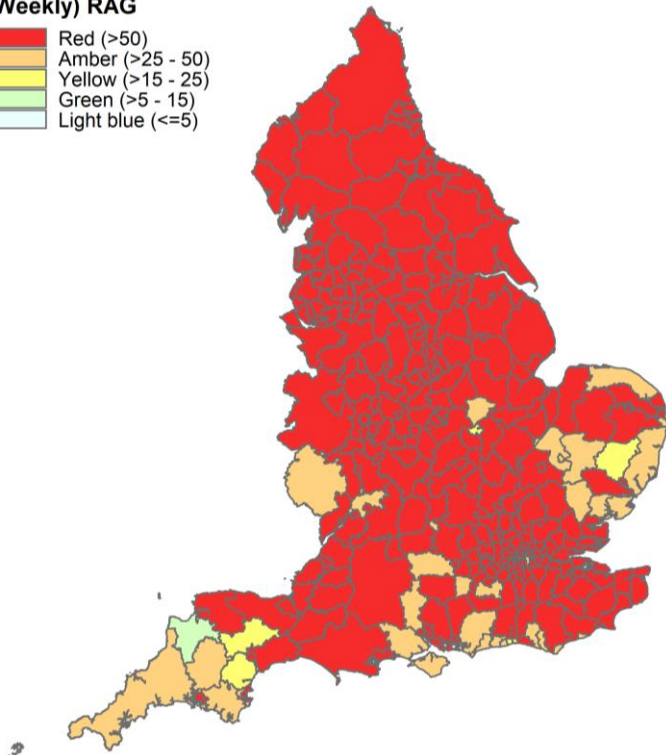
Cumulative case rate per 100,000 population



Average weekly case rates under 18s per 100,000 population by LA

Data for specimens taken between 5 November and 11 November (7 day) and 29 October and 11 November (14 day)

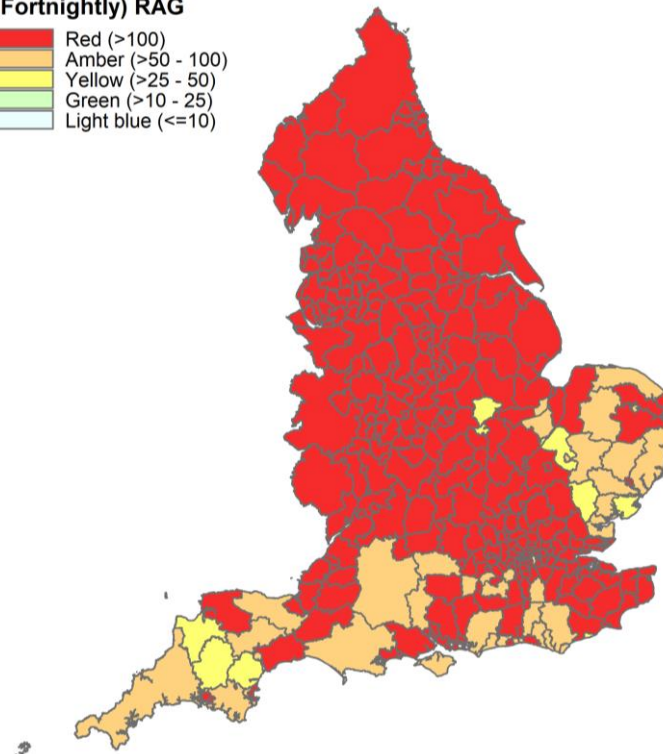
**Case rate per 100,000 population U18s
(Weekly) RAG**



Contains Ordnance Survey data © Crown copyright and database right 2020
Contains National Statistics data © Crown copyright and database right 2020

Local Authorities with the highest rate			
	Rate		Rate
Blackburn with Darwen	389.8	Bury	330.3
Oldham	375.9	Hartlepool	324.1
Kingston upon Hull, City of	359.1	Salford	315
Kirklees	358.7	Bolton	299.8
Rochdale	339.6	Leicester	298.5

**Case rate per 100,000 population U18s
(Fortnightly) RAG**



Contains Ordnance Survey data © Crown copyright and database right 2020
Contains National Statistics data © Crown copyright and database right 2020

Local Authorities with the highest rate			
	Rate		Rate
Oldham	787	Bradford	617.9
Blackburn with Darwen	771.8	Bolton	608.3
Kirklees	678.4	Kingston upon Hull, City of	606.6
Salford	657.9	Rochdale	602.3
Bury	637.6	Wigan	589.1

Cumulative case rates under 18s (up to 11 November 2020)

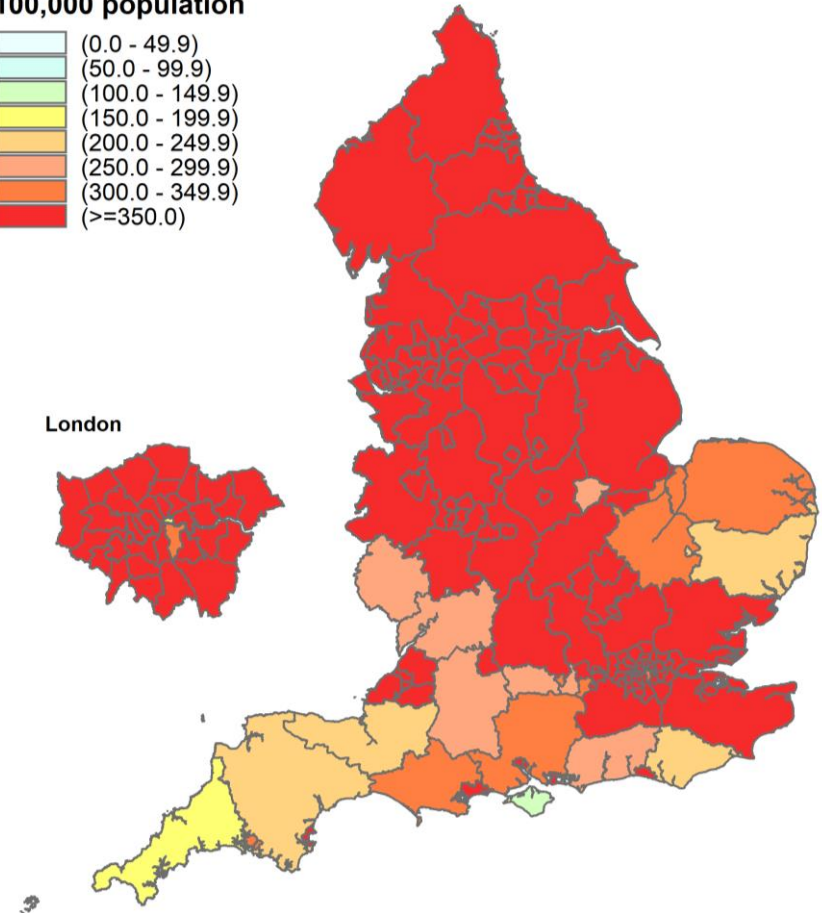
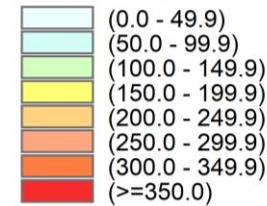
Cumulative rate of Pillar 1 and Pillar 2 COVID-19 cases (per 100,000) by upper-tier local authority in England* (**n=97,709**)

Excludes 796 COVID-19 cases for whom geographical information is to be confirmed.

Local Authorities with the highest cumulative rate

	Rate
Blackburn with Darwen	3115.5
Oldham	2763.8
Bolton	2366
Manchester	2316.3
Rochdale	2268.3
Bradford	2260.5
Bury	2178.4
Salford	1899
Knowsley	1887.5
Wigan	1871.8
Kirklees	1854.3
Leicester	1820.8
Liverpool	1749.1
Tameside	1618.5
Lancashire	1593

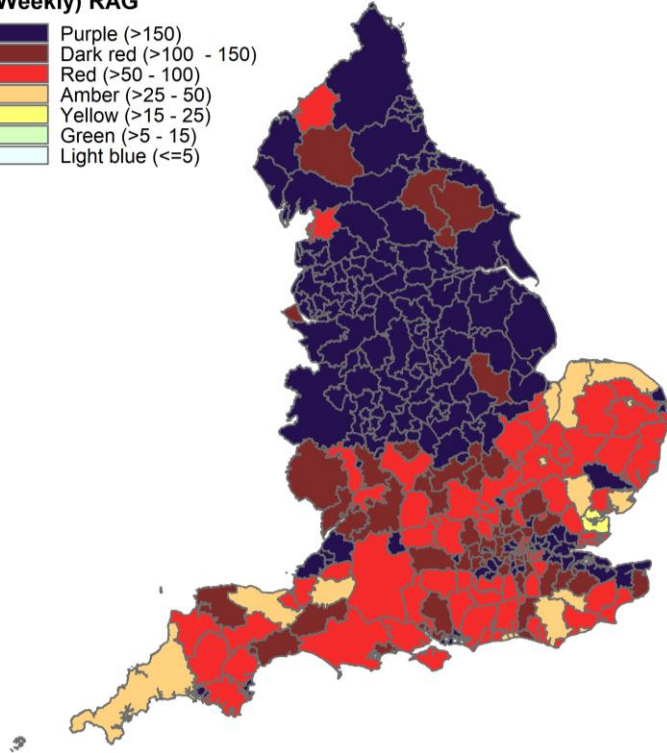
Cumulative case rate U18s per 100,000 population



Average weekly case rates for individuals aged 59 and over per 100,000 population by LA

Data for specimens taken between 5 November and 11 November (7 day)

Case rate per 100,000 population O59s (Weekly) RAG



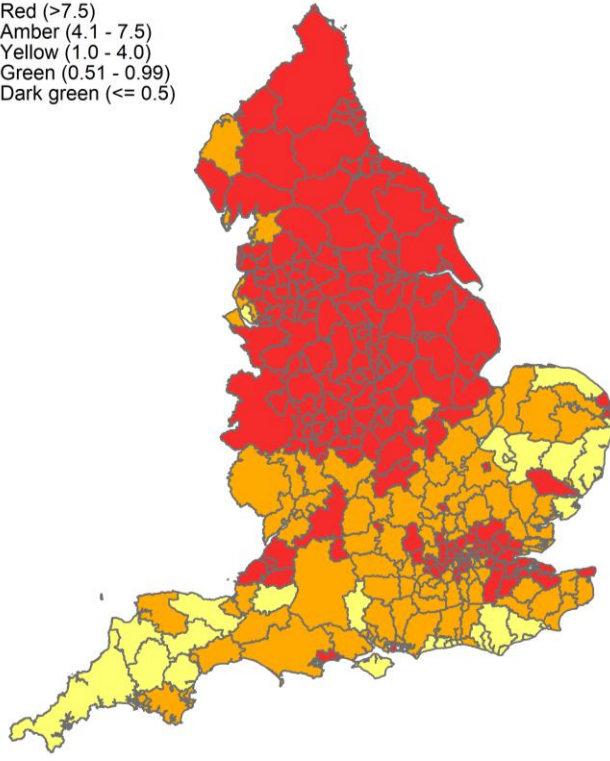
Contains Ordnance Survey data © Crown copyright and database right 2020
Contains National Statistics data © Crown copyright and database right 2020

Local Authorities with the highest rate			
	Rate		Rate
Kingston upon Hull, City of	713.6	Hartlepool	472.4
Oldham	545.9	Rochdale	471.4
North East Lincolnshire	525.3	Newcastle upon Tyne	465.9
Stoke-on-Trent	502.6	Sandwell	462.4
East Lindsey	492.5	Blackburn with Darwen	455.7

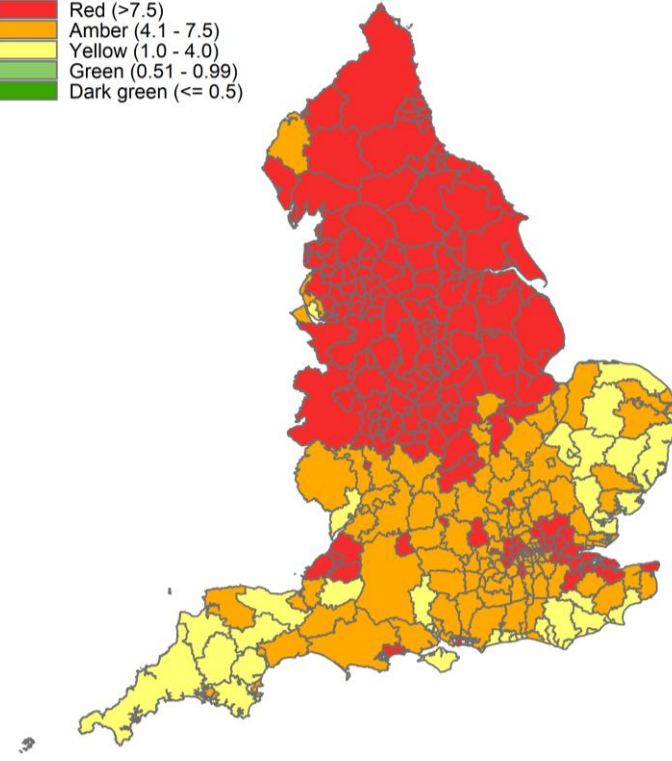
Testing: Individuals testing positive per 100 tests

Data for specimens taken between 5 November and 11 November (7 day) and 29 October and 11 November (14 day)

Percentage of individuals testing positive (weekly) RAG



Percentage of individuals testing positive (Fortnightly) RAG



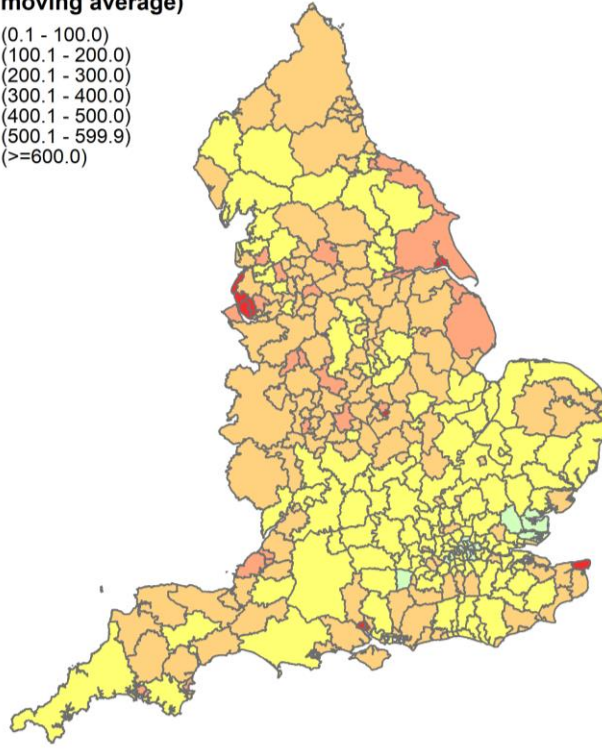
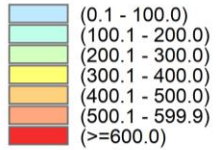
Local Authorities with the highest percentages			
	%		%
Rochdale	19.3	Kingston upon Hull, City of	18.1
Oldham	19.3	Bury	18
Kirklees	19.1	Hartlepool	17.8
Blackburn with Darwen	18.5	Bolton	17.7
Stockton-on-Tees	18.2	Salford	17.7

Local Authorities with the highest percentages			
	%		%
Oldham	20.8	Bury	18.9
Blackburn with Darwen	20.4	Salford	18.6
Rochdale	19.5	Wigan	18.4
Kirklees	19.3	Bradford	18.2
Bolton	19	Stockton-on-Tees	18.1

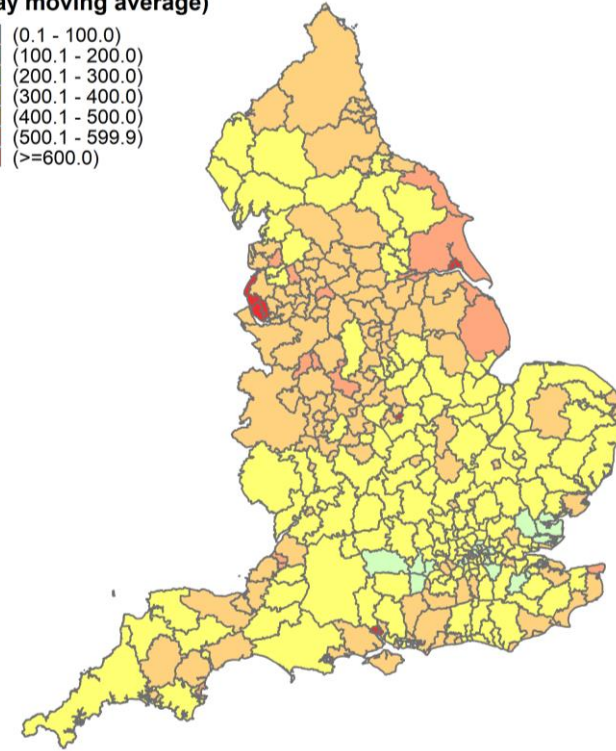
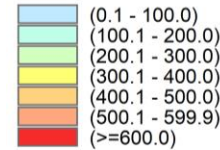
Testing: Individuals tested per 100,000 population per day

Data for specimens taken between 5 November and 11 November (7 day) and 29 October and 11 November (14 day)

Average number of individuals tested per 100,000 per day
(7 day moving average)



Average number of individuals tested per 100,000 per day
(14 day moving average)

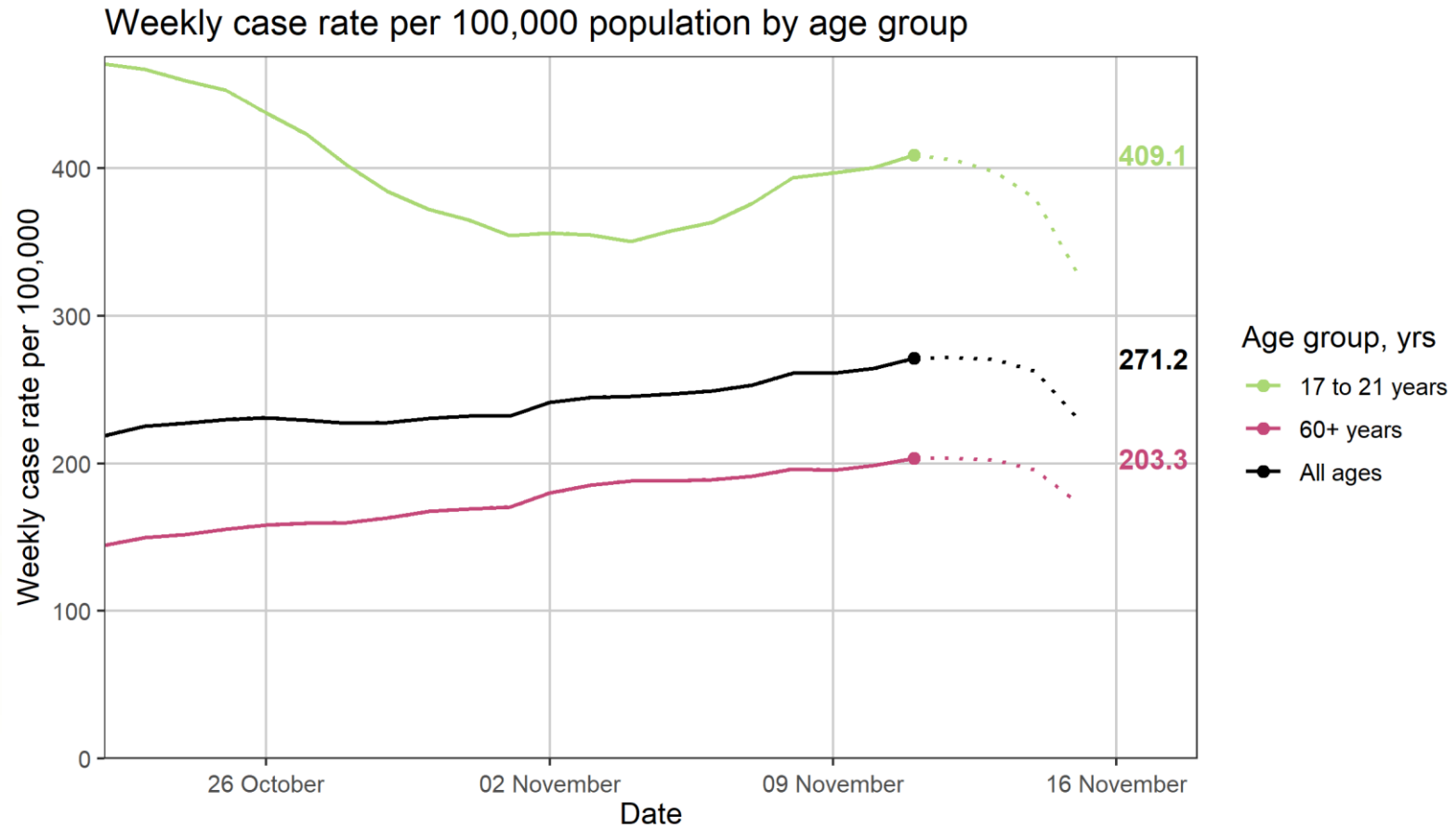


Local Authorities with the highest rate			
	Rate		Rate
Liverpool	2487.5	Oadby and Wigston	645.7
Knowsley	1024.3	Thanet	623.8
Sefton	1004.5	Torbay	595.6
Southampton	788.6	Scarborough	579.5
Kingston upon Hull, City of	653.3	Stoke-on-Trent	564.9

Local Authorities with the highest rate			
	Rate		Rate
Liverpool	1442.1	Oadby and Wigston	608.6
Southampton	782	Torbay	566.4
Knowsley	747.8	East Staffordshire	562.2
Sefton	734.6	Oldham	553.8
Kingston upon Hull, City of	611.4	Thanet	546.4

Case rate across both pillars 1 and 2 (weekly) – selected ages

Data up to the 11 November 2020

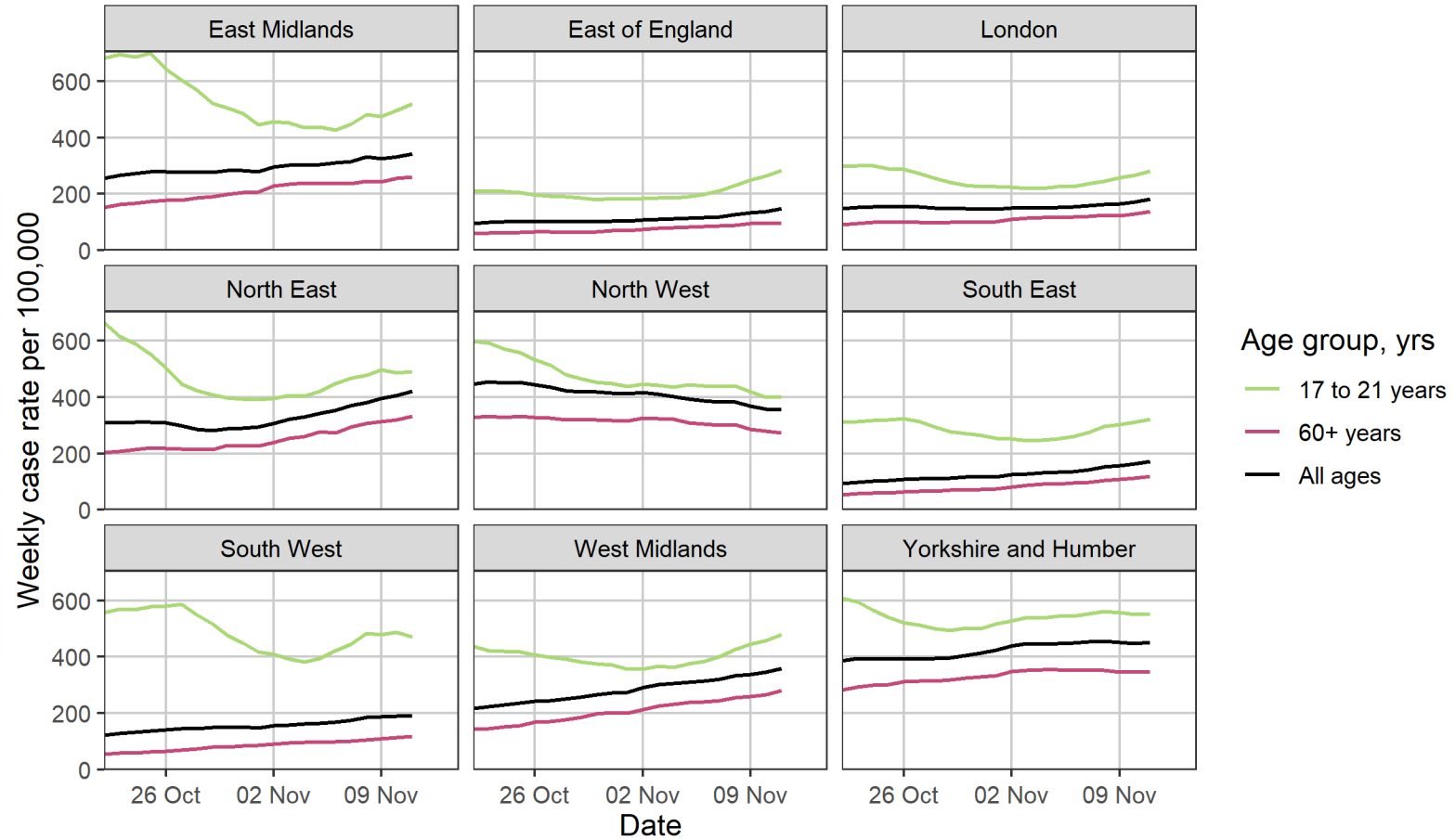


Labels show weekly case rate for 05 November 2020 to 11 November 2020
Dashed lines indicates period with incomplete data

Case rate across both pillars 1 and 2 (weekly) – selected ages

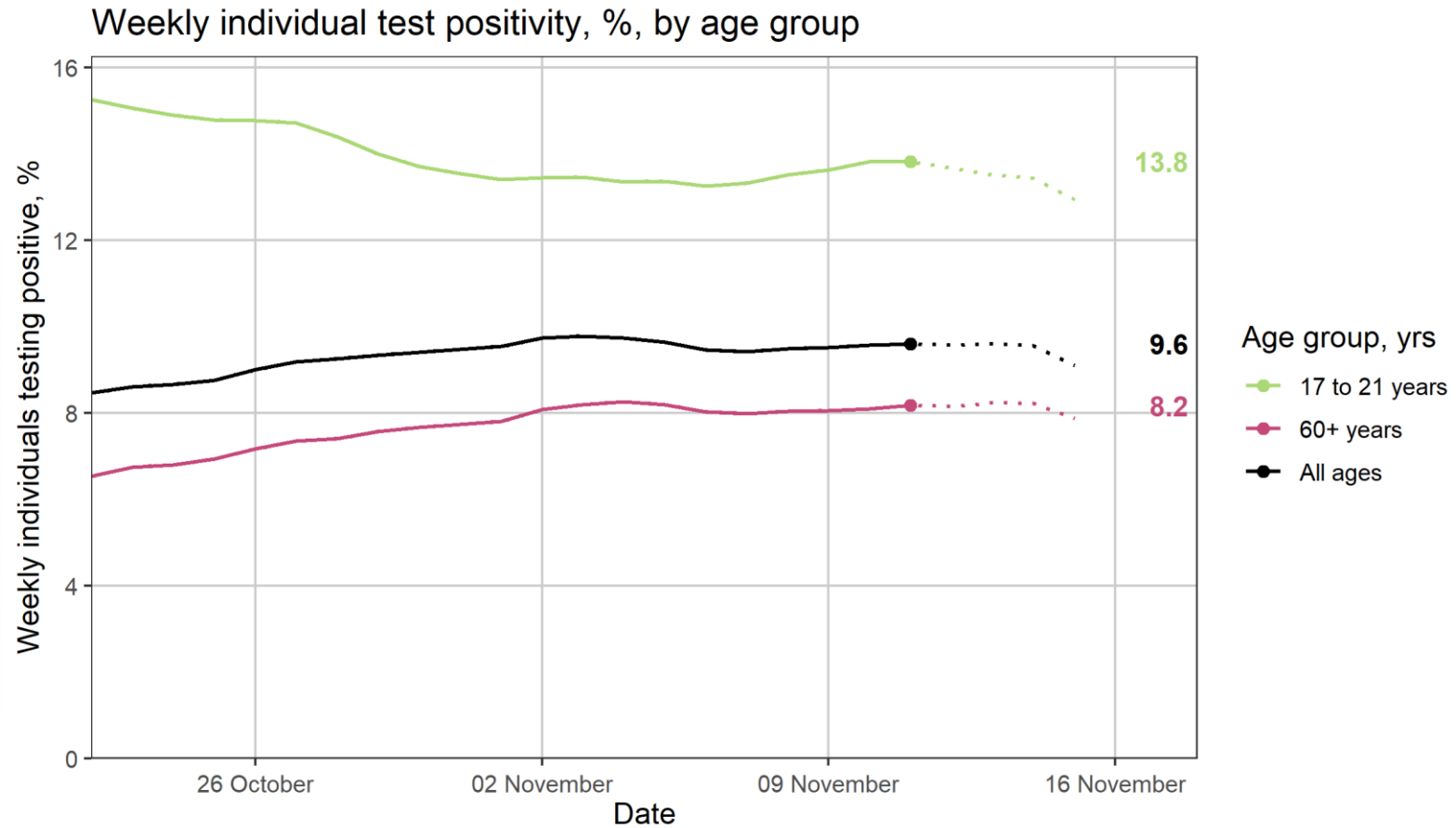
Data up to the 11 November 2020

Weekly case rate per 100,000 population by age group



Percentage of individuals testing positive across both pillars 1 and 2 (weekly) – selected ages

Data up to the 11 November 2020

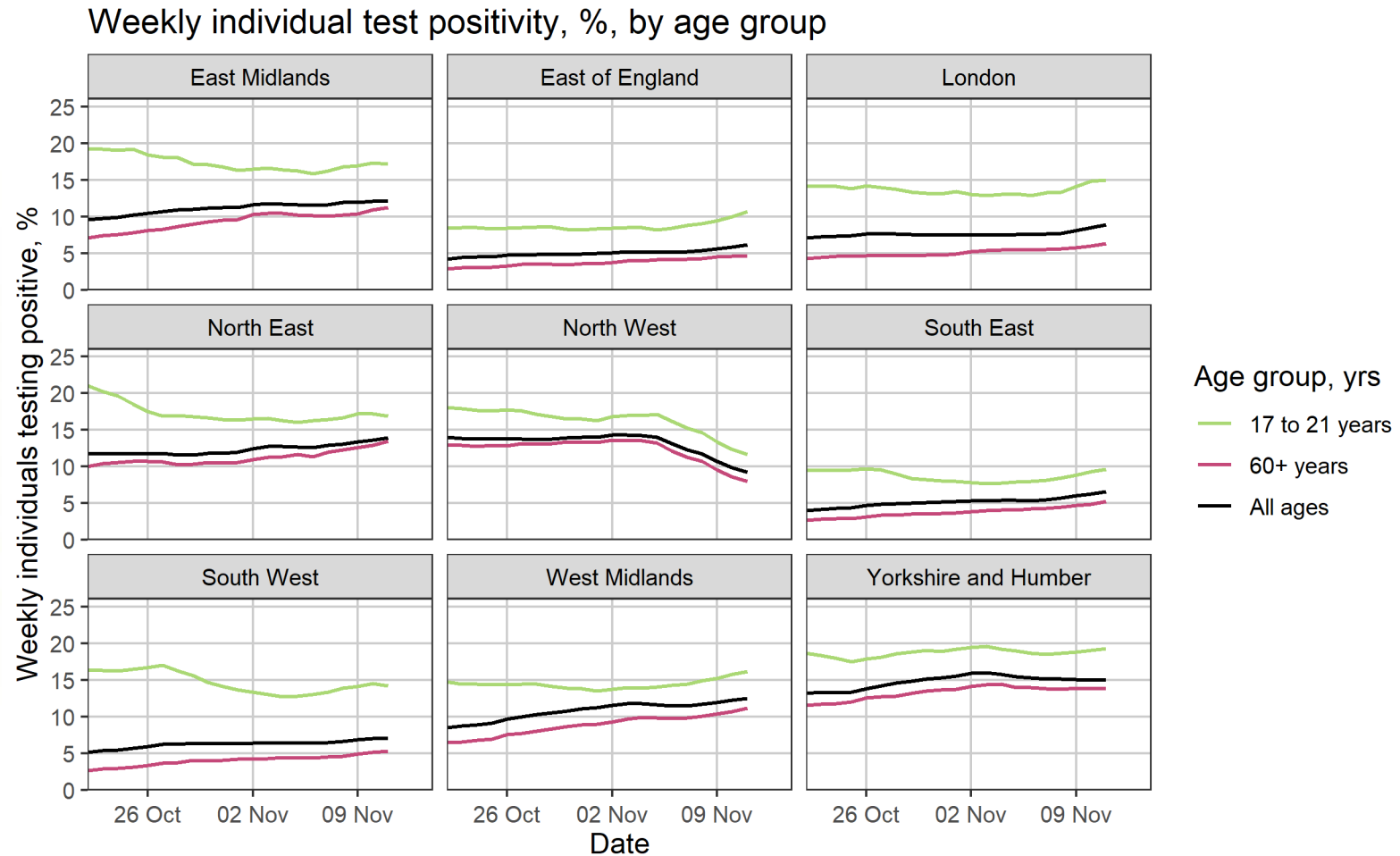


Labels show weekly positivity rate for 05 November 2020 to 11 November 2020
Dashed lines indicates period with incomplete data

Test positivity and testing rate metrics based on updated methodology from 20th October

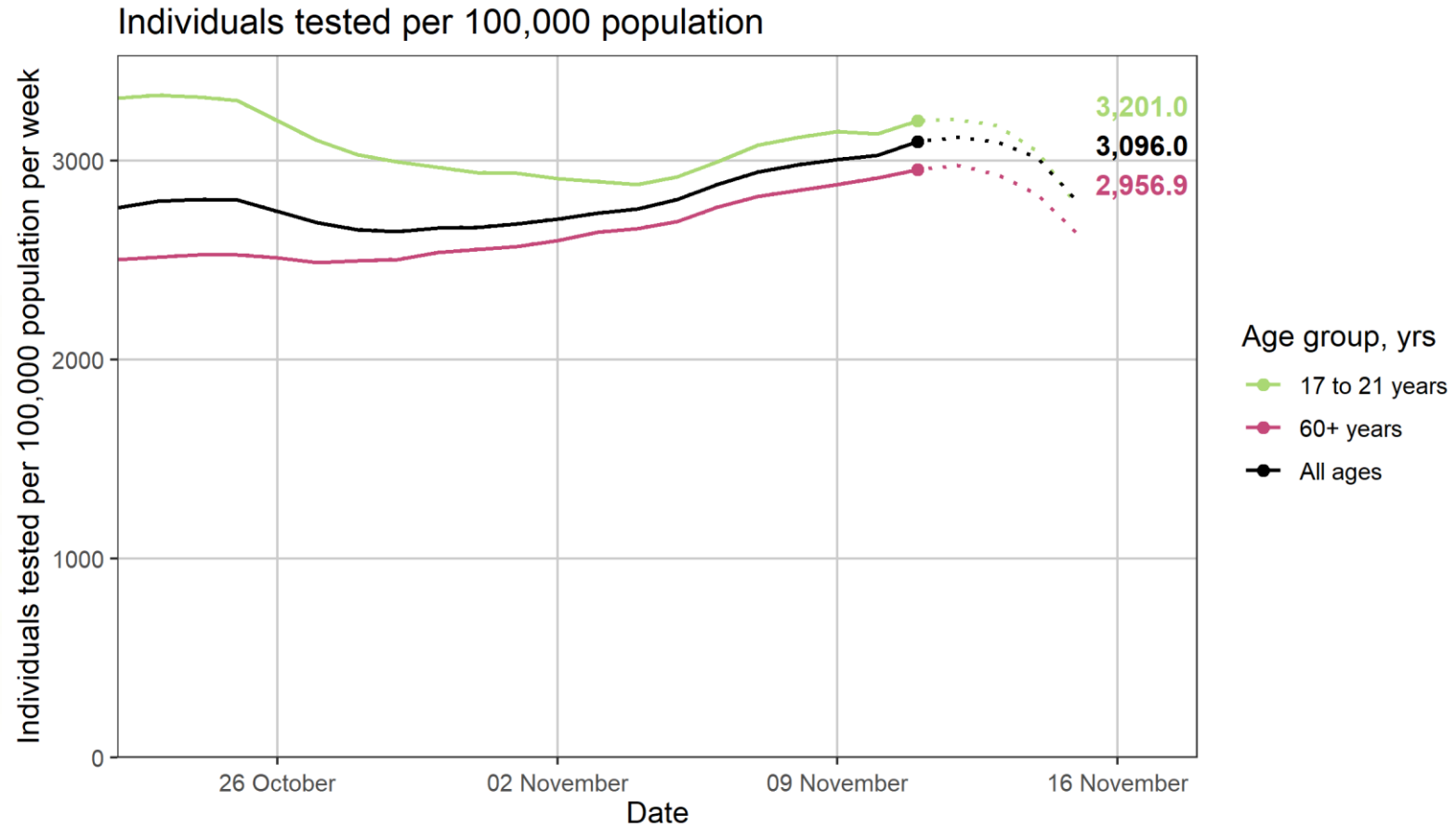
Percentage of individuals testing positive across both pillars 1 and 2 (weekly) – selected ages

Data up to the 11 November 2020



Individuals tested across both pillars 1 and 2 (weekly) – selected ages

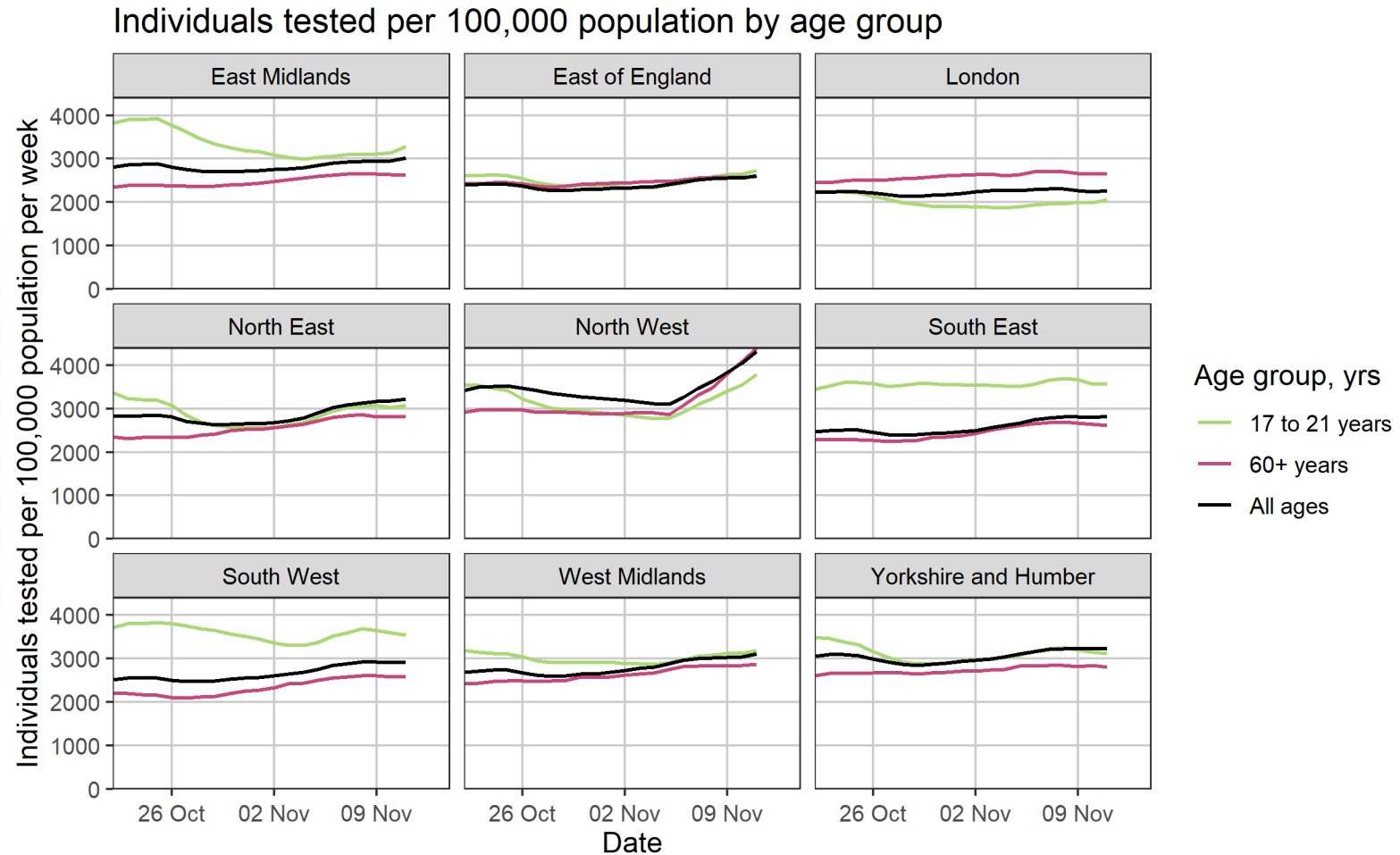
Data up to the 11 November 2020



Labels show weekly testing rate for 05 November 2020 to 11 November 2020
Dashed lines indicates period with incomplete data

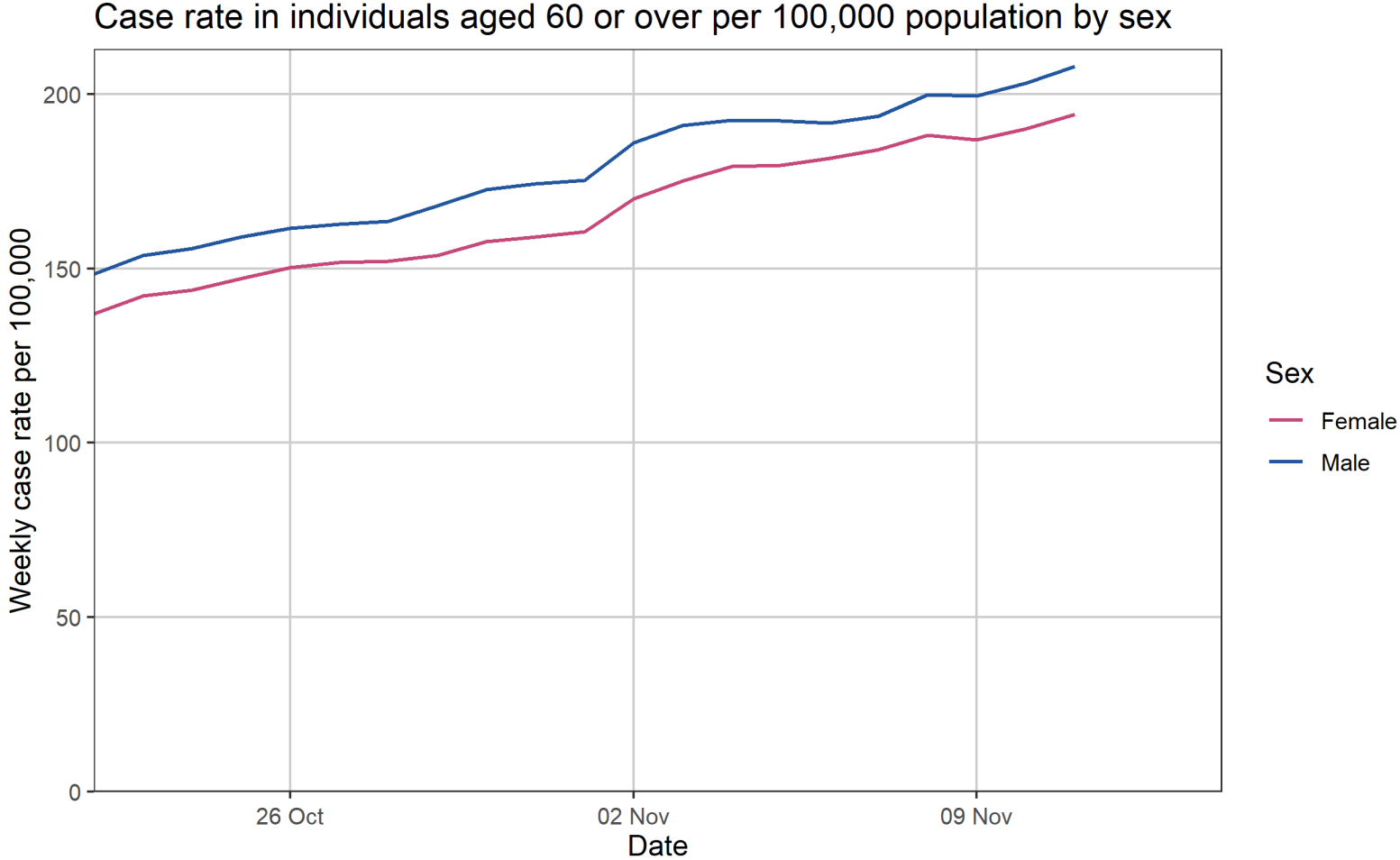
Individuals tested across both pillars 1 and 2 (weekly) – selected ages

Data up to the 11 November 2020



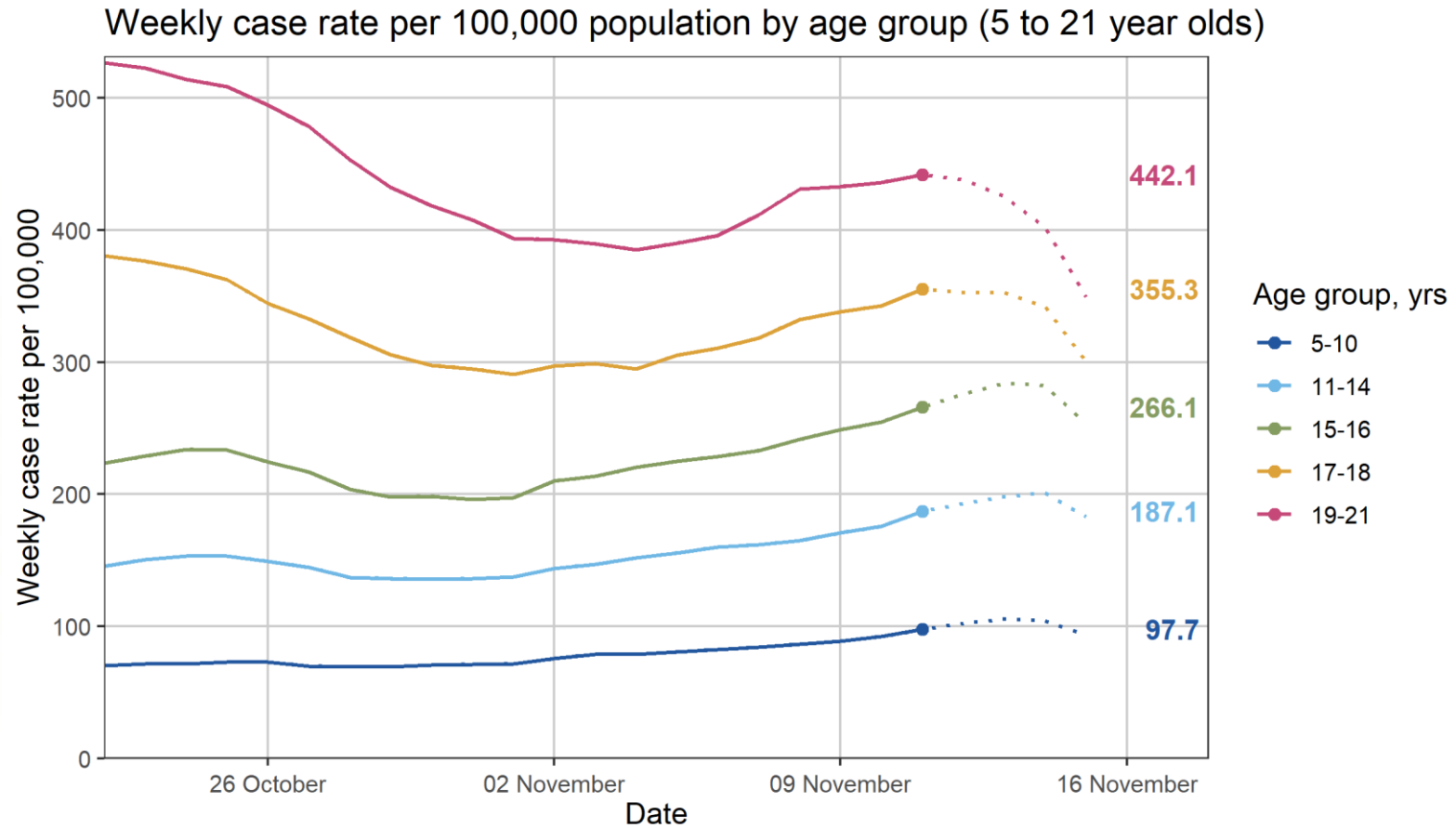
Case rate across both pillars 1 and 2 (weekly) – aged 60 or over

Data up to the 11 November 2020



Case rate across both pillars 1 and 2 (weekly) – young people

Data up to the 11 November 2020

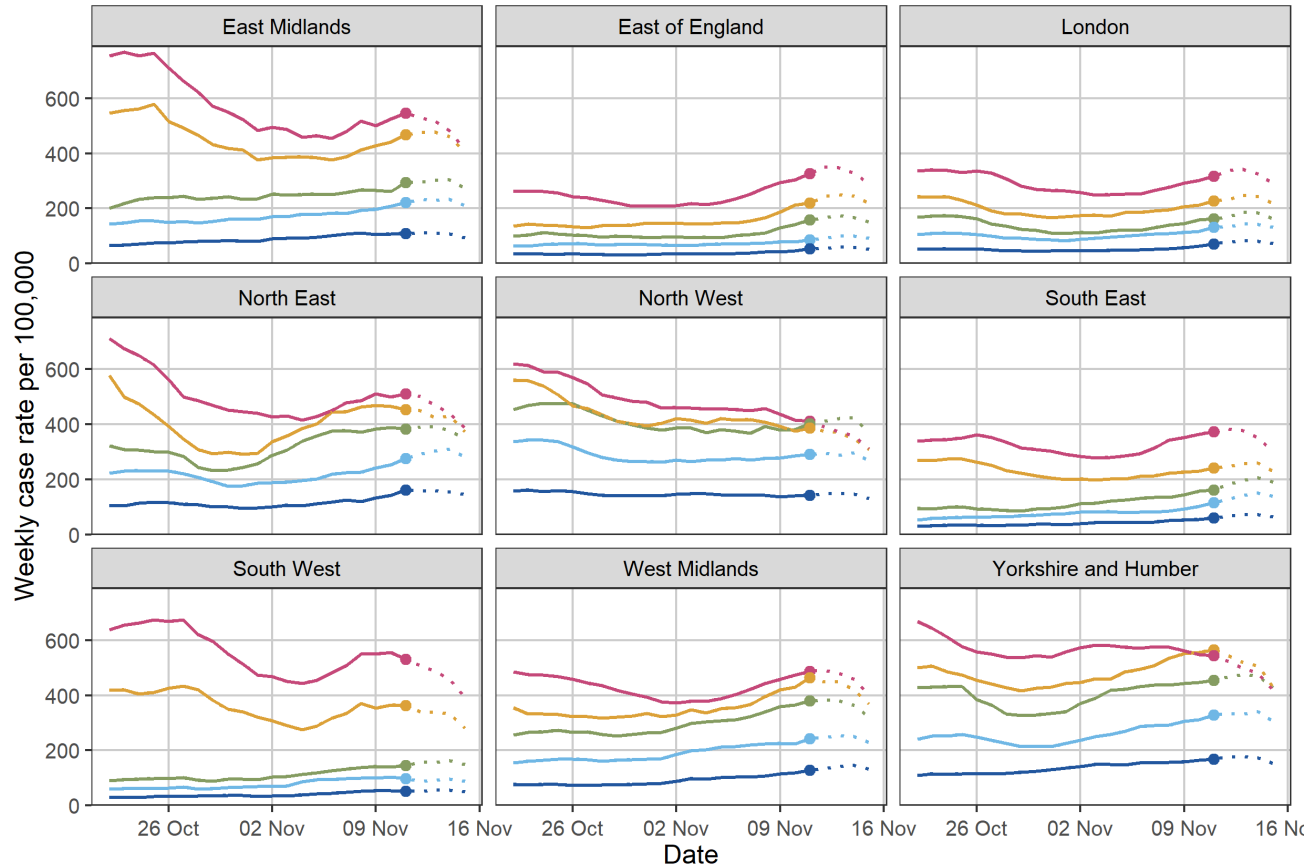


Labels show weekly case rate for 05 November 2020 to 11 November 2020
Dashed lines indicates period with incomplete data

Case rate across both pillars 1 and 2 (weekly) – young people

Data up to the 11 November 2020

Weekly case rate per 100,000 population by age group (5 to 21 year olds)

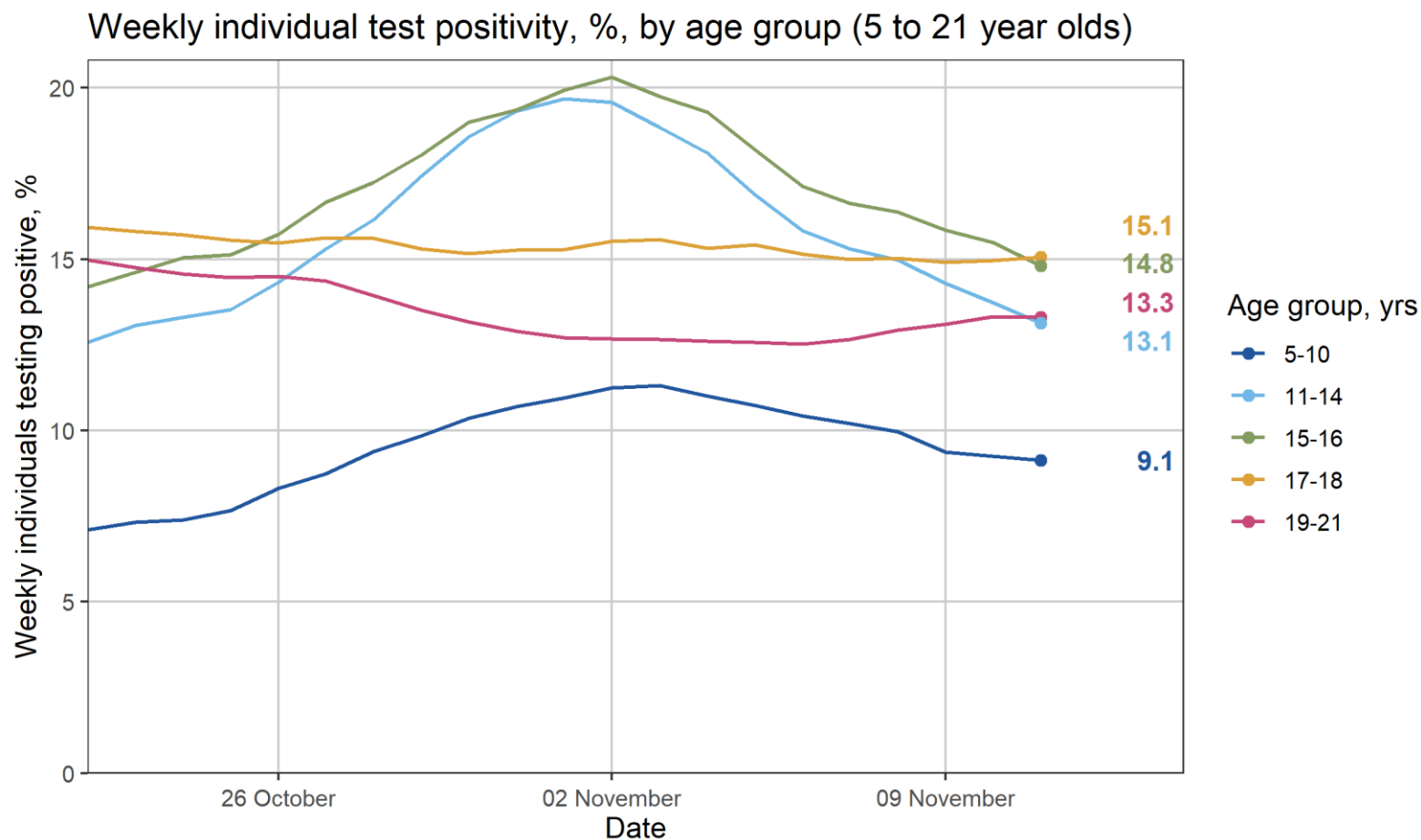


Age group, yrs ● 5-10 ● 11-14 ● 15-16 ● 17-18 ● 19-21

Dashed lines indicates period with incomplete data

Percentage of individuals testing positive across both pillars 1 and 2 (weekly) – young people

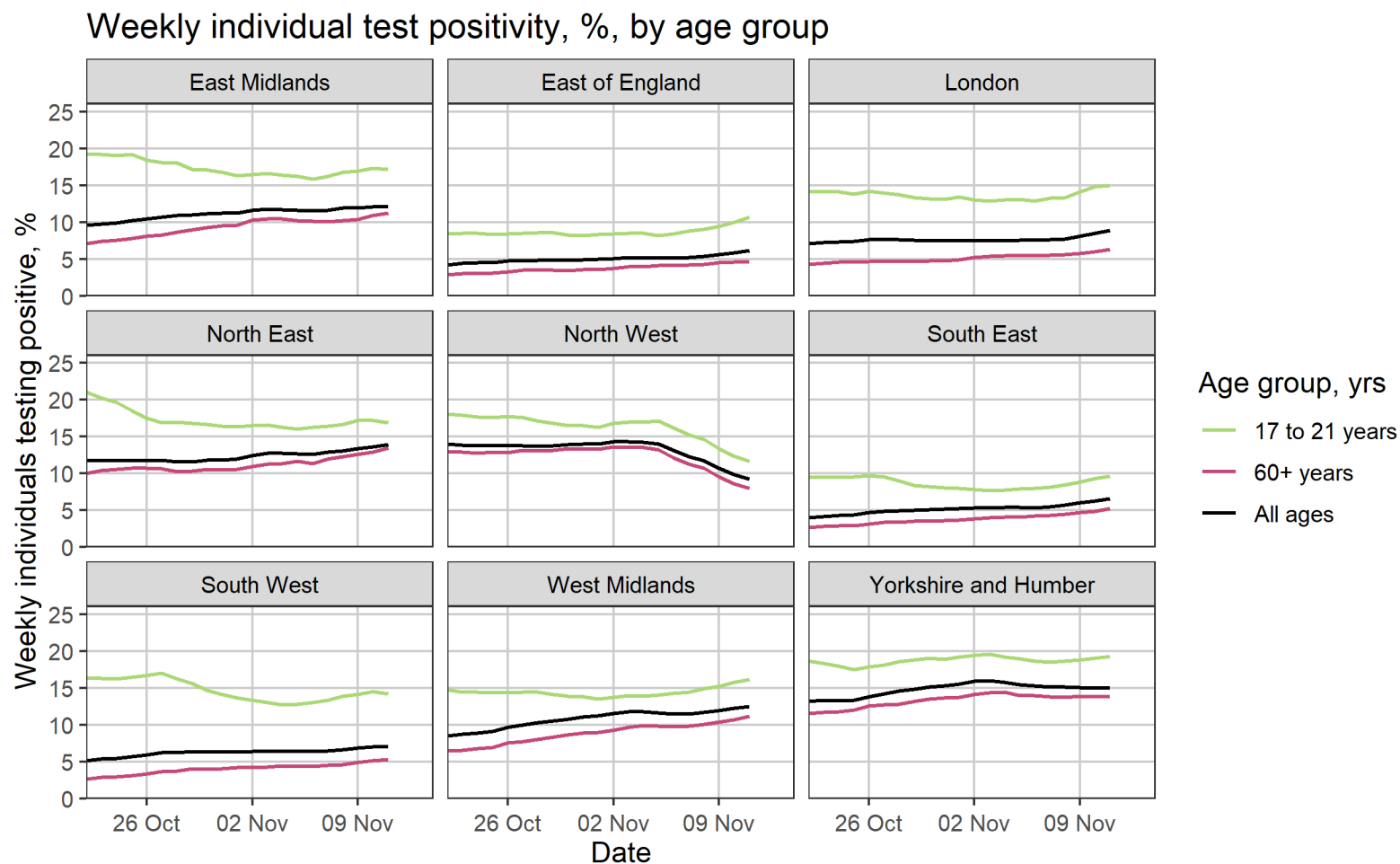
Data up to the 11 November 2020



Labels show positivity rate for 05 November 2020 to 11 November 2020

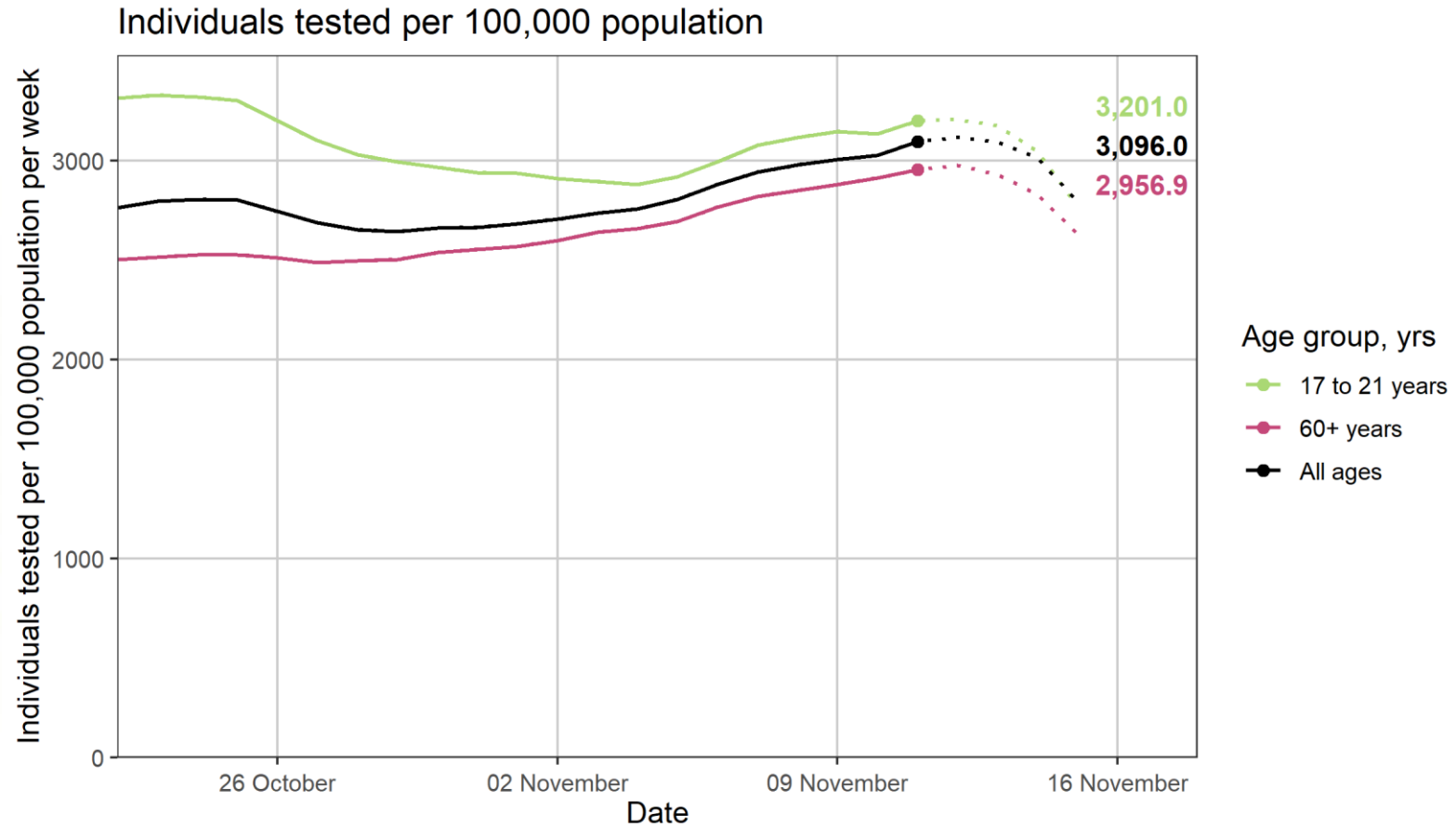
Percentage of individuals testing positive across both pillars 1 and 2 (weekly) – young people

Data up to the 11 November 2020



Individuals tested across both pillars 1 and 2 (weekly) – young people

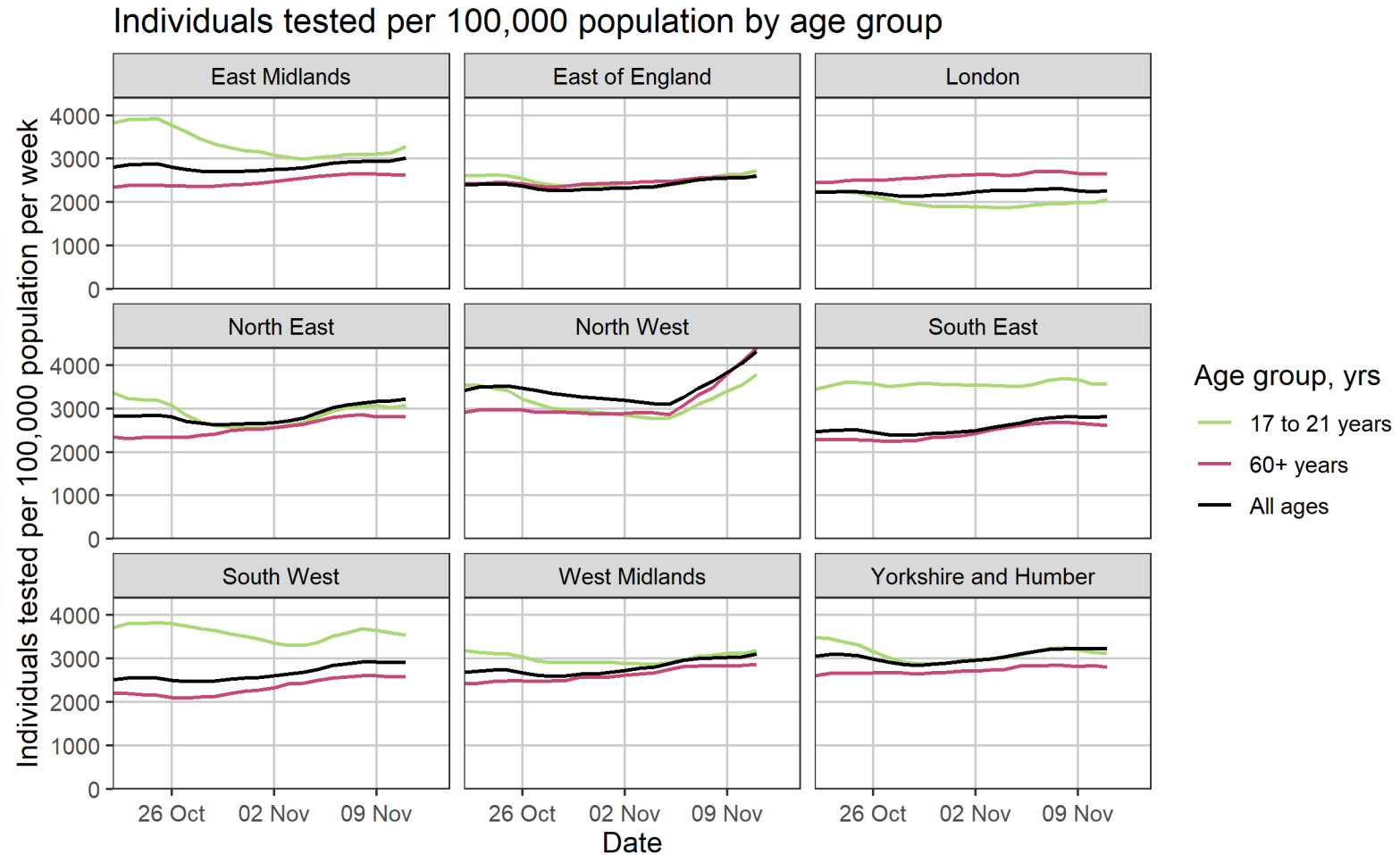
Data up to the 11 November 2020

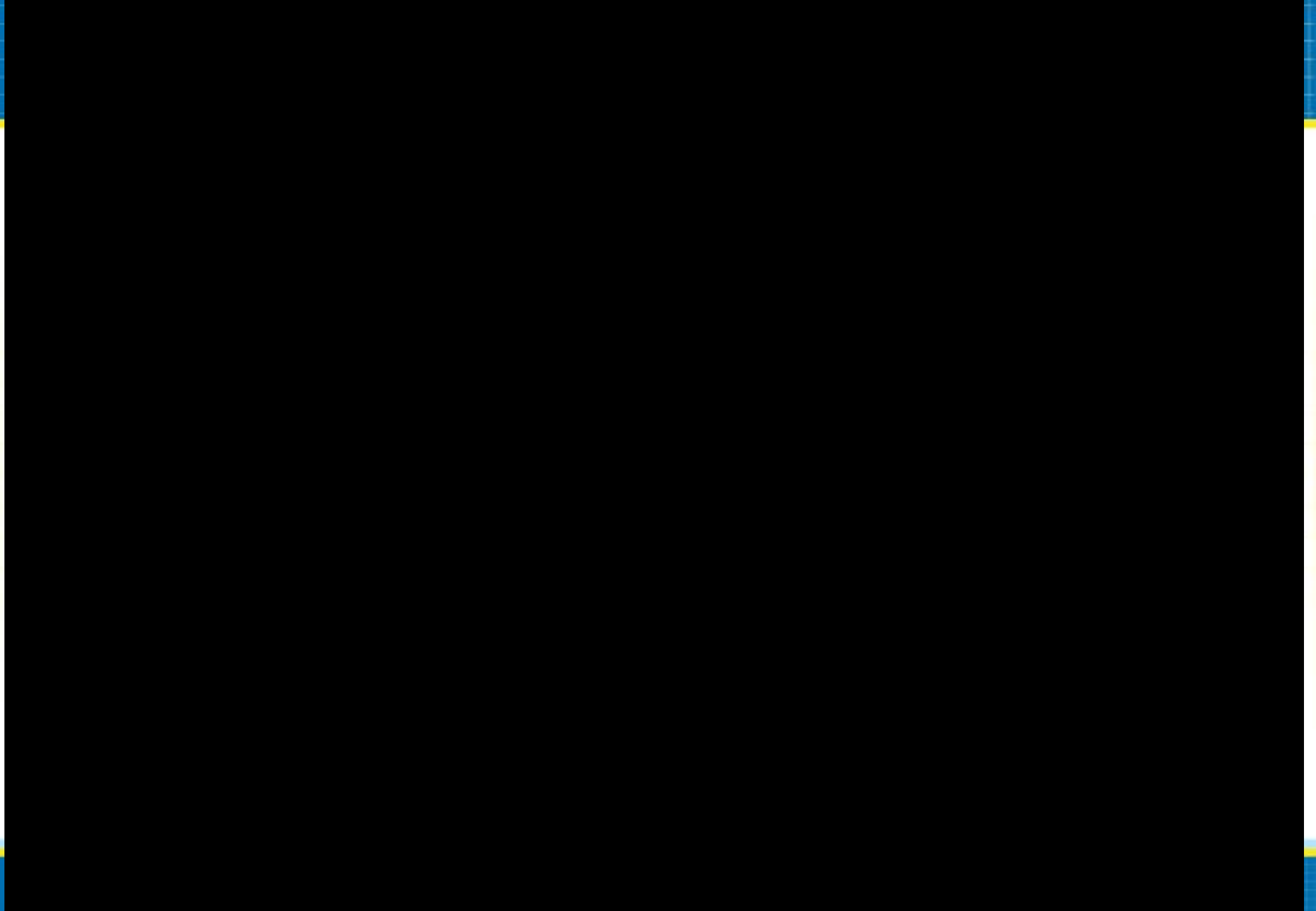


Labels show weekly testing rate for 05 November 2020 to 11 November 2020
Dashed lines indicates period with incomplete data

Individuals tested across both pillars 1 and 2 (weekly) – young people

Data up to the 11 November 2020







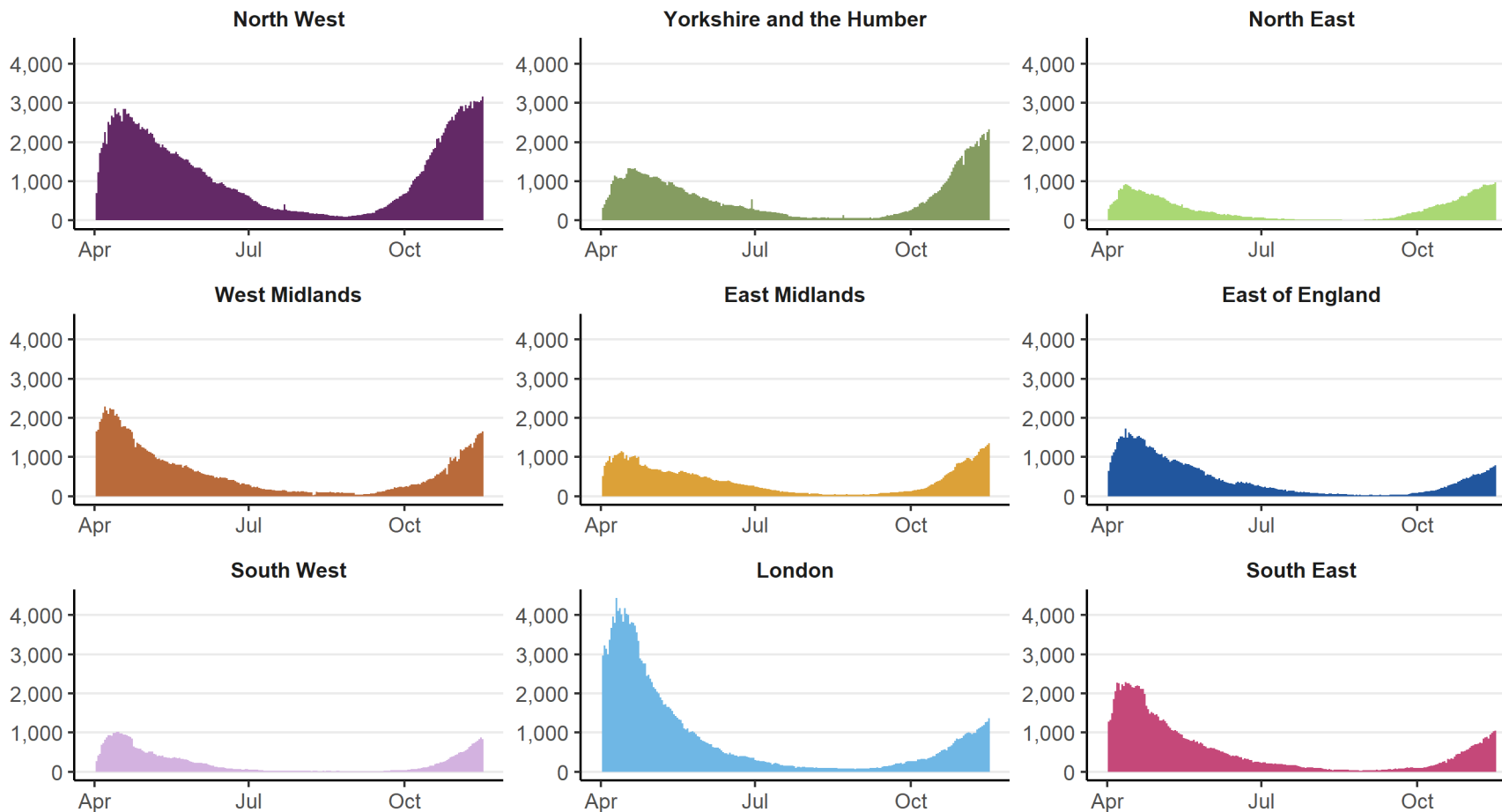


f
s
T
S



Patients in hospital by region

Daily count of confirmed COVID-19 patients in hospital at 8am by region



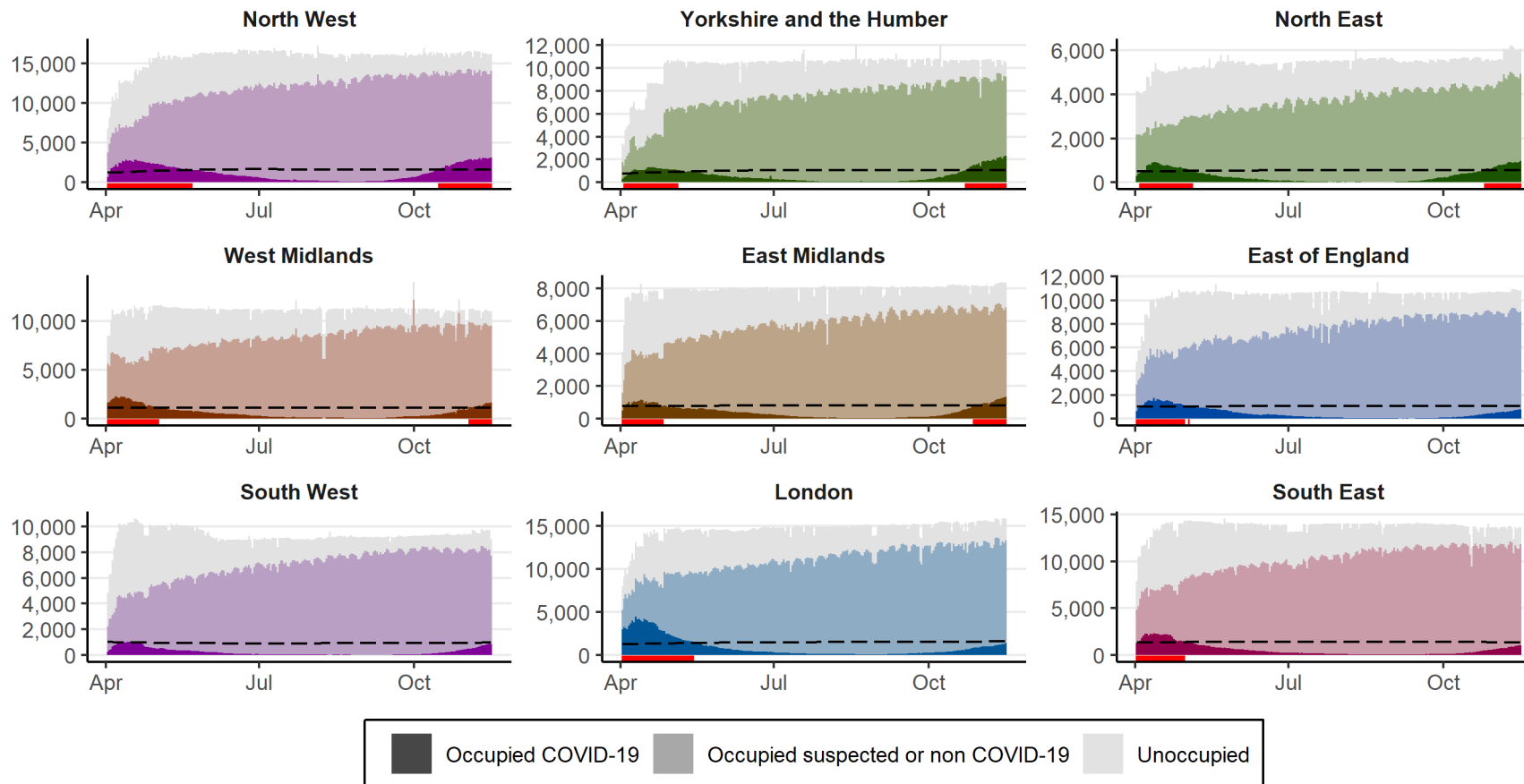
Source: NHS England & Improvement COVID-19 Hospital Activity Data, from 01 April 2020 to 16 November 2020. Produced by Joint Biosecurity Centre.

NOTE: slide shows bed occupancy, not new admissions.

Bed occupancy and capacity by region - general and acute beds

Total bed occupancy and capacity by region

Solid bar above axis indicates when recorded COVID-19 bed occupancy is above 10% of available capacity

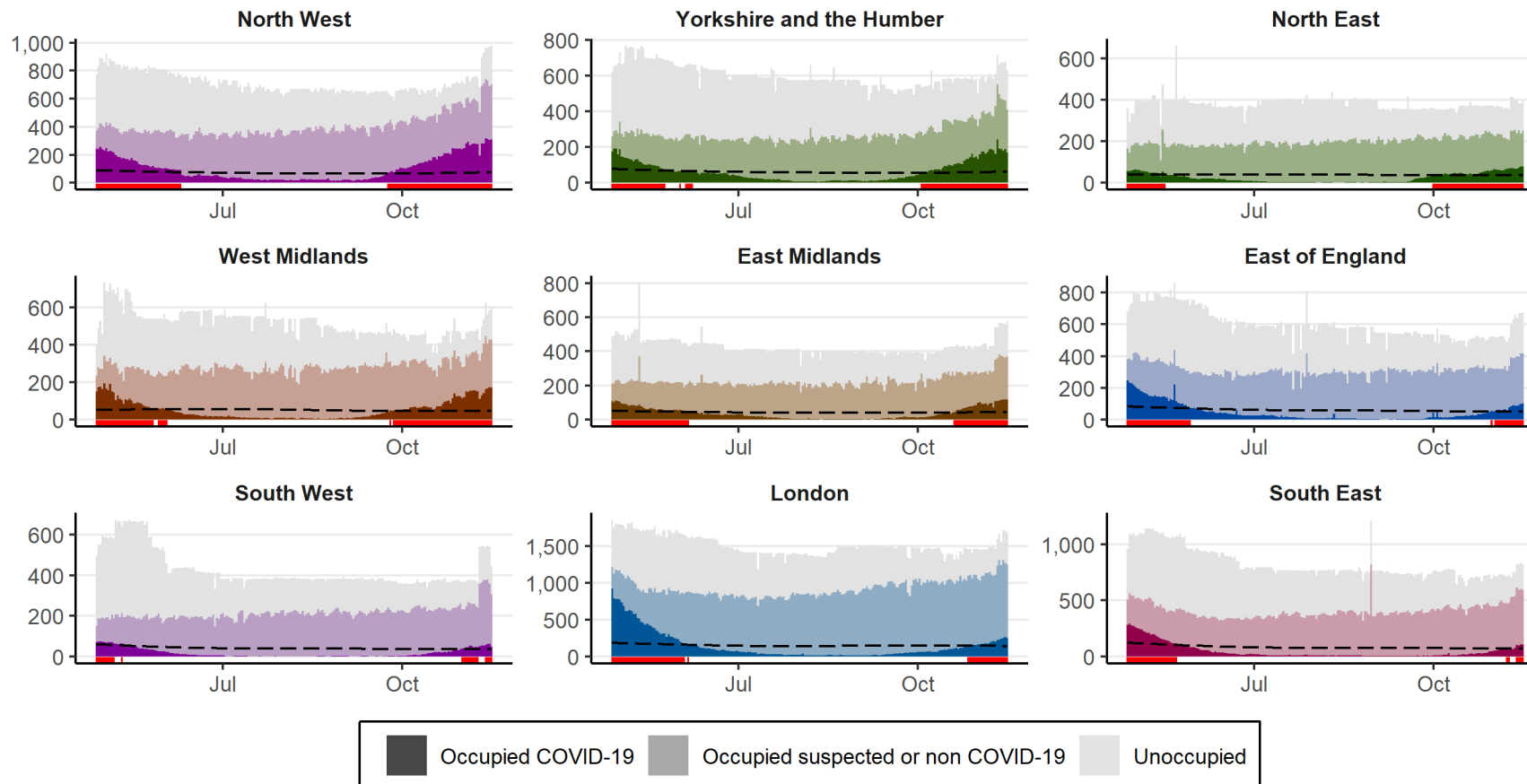


Source: NHS England & Improvement COVID-19 Hospital Activity Data, from 02 April 2020 to 16 November 2020. Produced by Joint Biosecurity Centre.

Bed occupancy and capacity by region - HDU/ITU beds

HDU/ITU bed occupancy and capacity by region

Solid bar above axis indicates when recorded COVID-19 bed occupancy is above 10% of available capacity

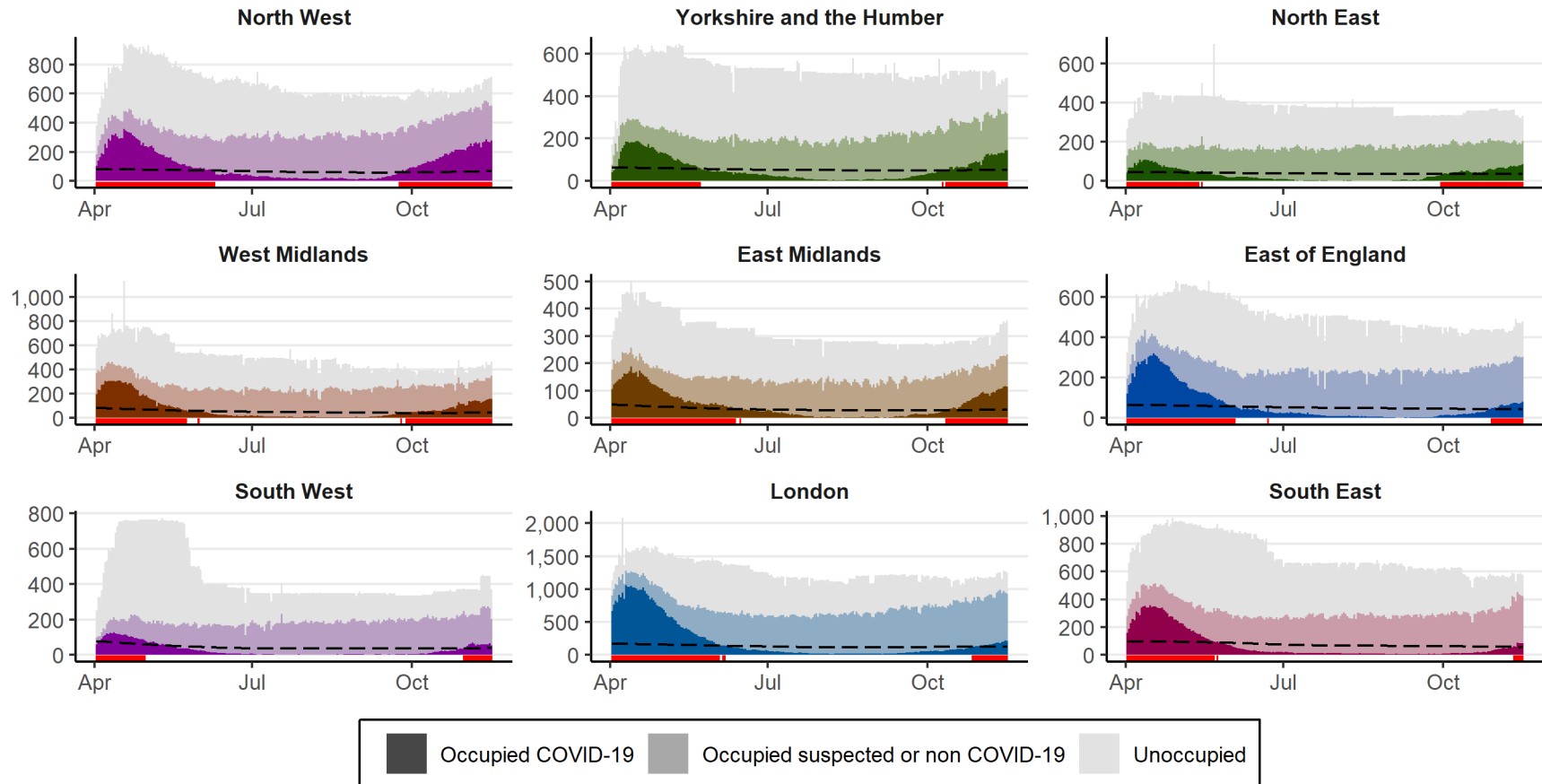


Source: NHS England & Improvement COVID-19 Hospital Activity Data, from 27 April 2020 to 16 November 2020. Produced by Joint Biosecurity Centre.

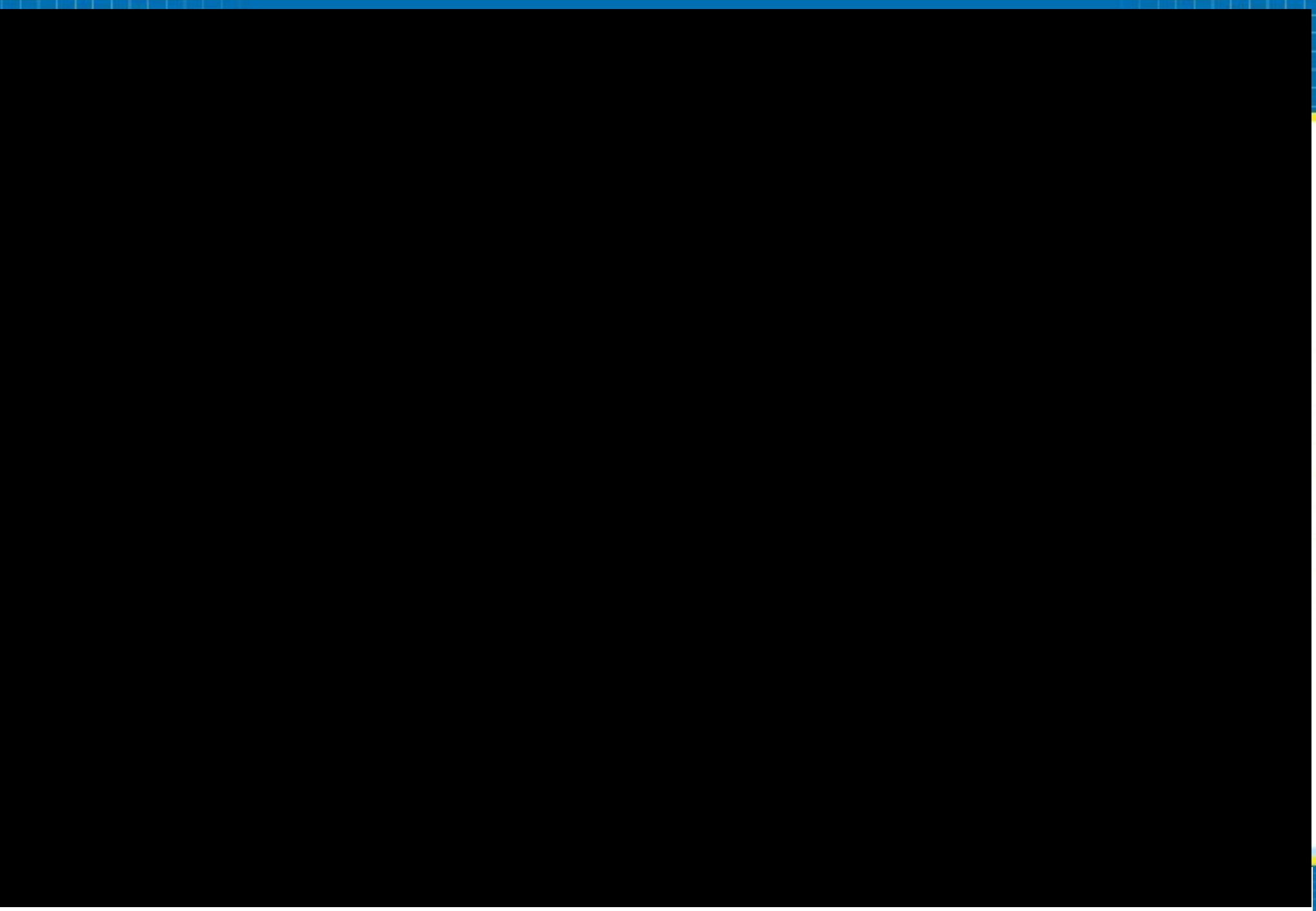
Bed occupancy and capacity by region - mechanical ventilation beds

Mechanical ventilation bed occupancy and capacity by region

Solid bar above axis indicates when recorded COVID-19 bed occupancy is above 10% of available capacity

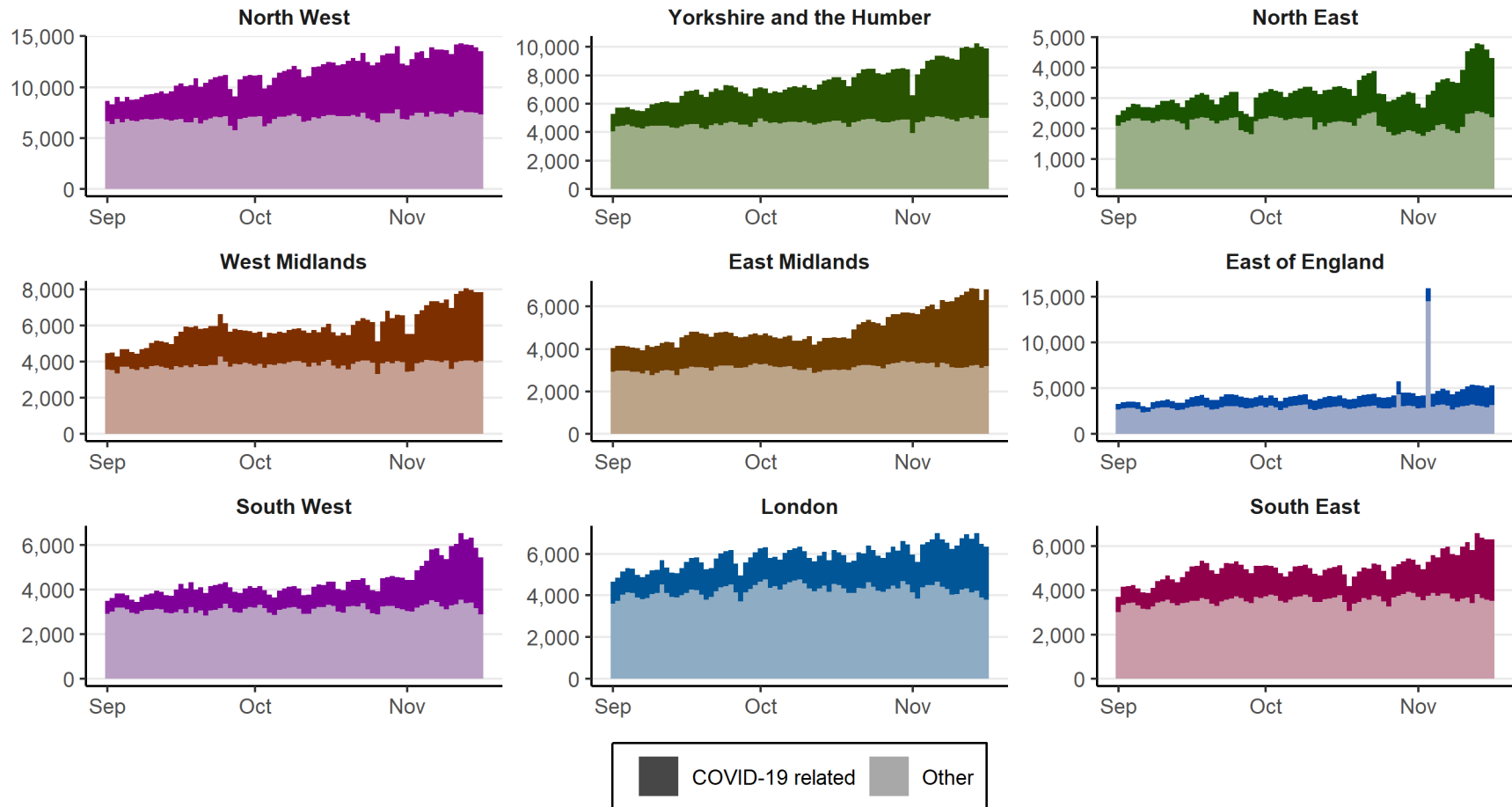


Source: NHS England & Improvement COVID-19 Hospital Activity Data, from 02 April 2020 to 16 November 2020. Produced by Joint Biosecurity Centre.



NHS staff absences by region (COVID-19 related and other)

Daily NHS staff absences by region

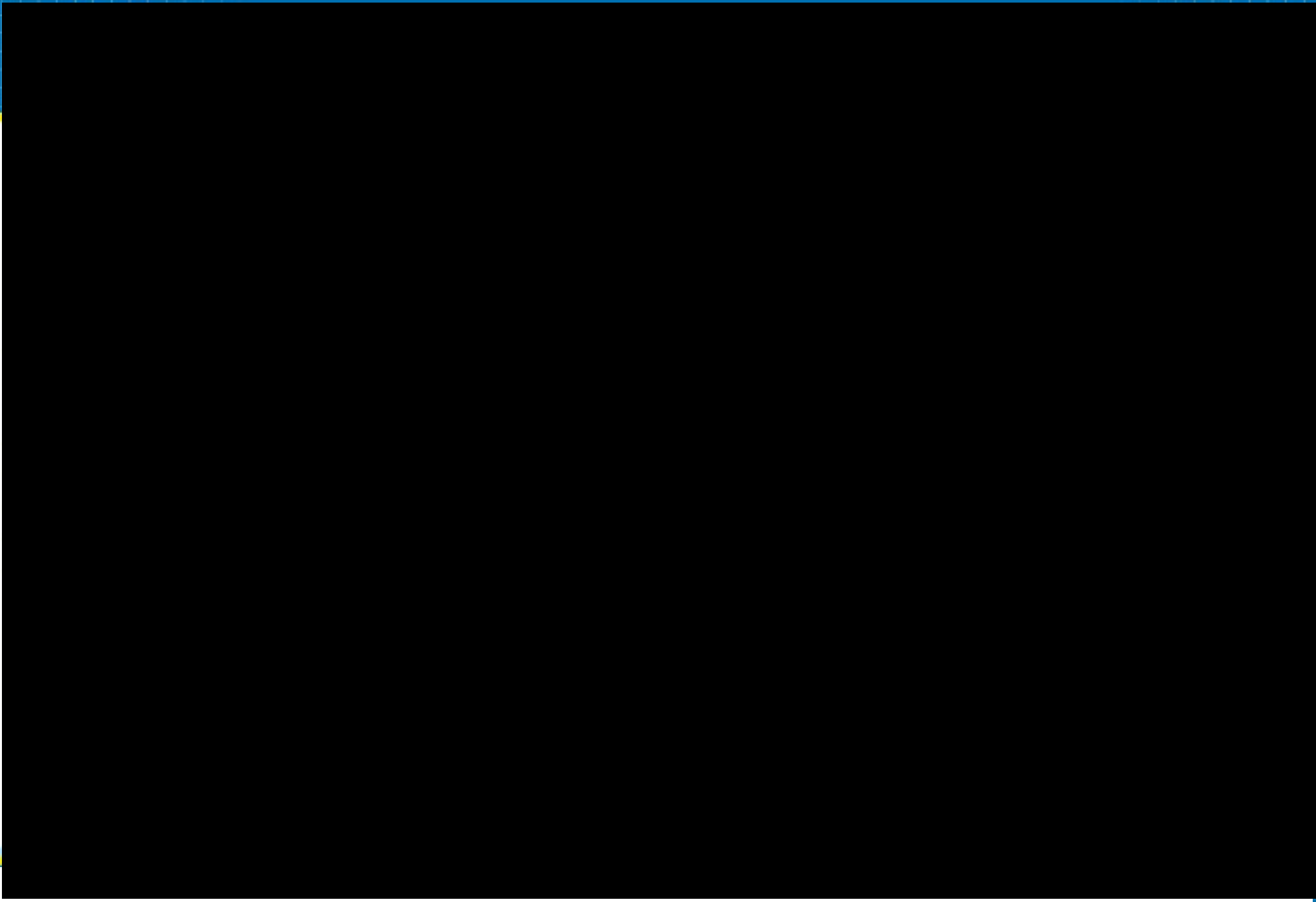


Source: NHS England & Improvement COVID-19 Hospital Activity Data, from 01 September 2020 to 16 November 2020. Produced by Joint Biosecurity Centre.









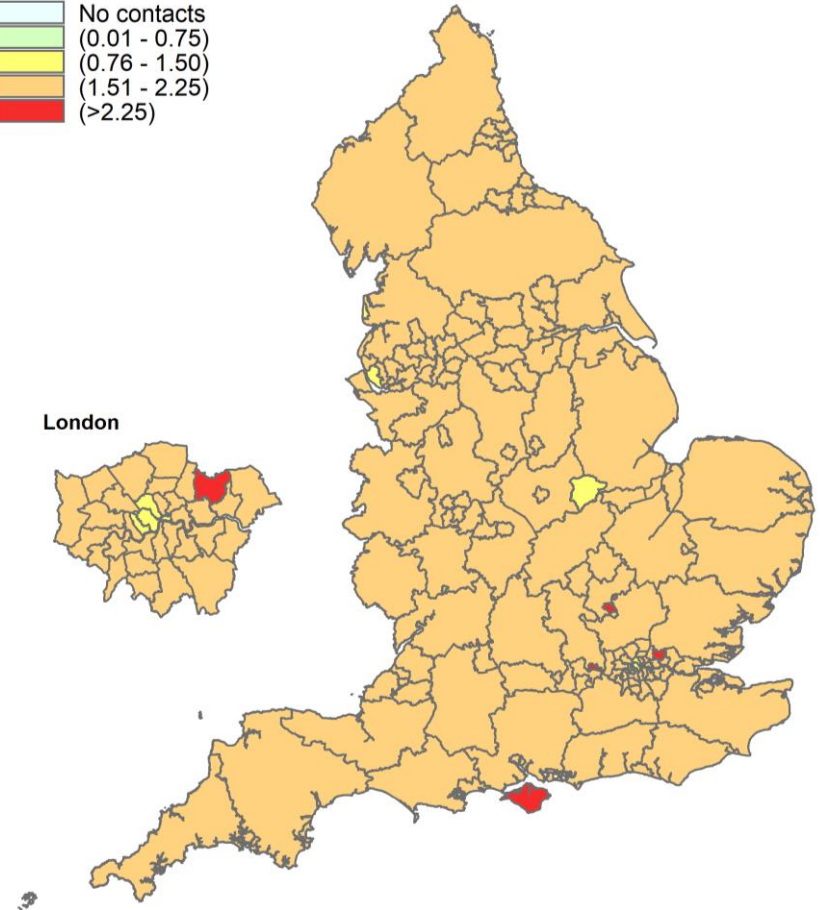
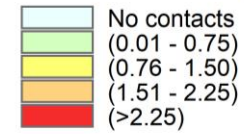
Contact tracing – 7 day

Data extracted 16 November 2020 – data up to 15 November 2020

Median number of individual contacts per case by lower-tier local authority, England, overall from **9 November** to **15 November 2020** (NHS Test and Trace).

Note this excludes contacts identified as part of complex situations managed by Level 1.

Median contacts per case 7 day



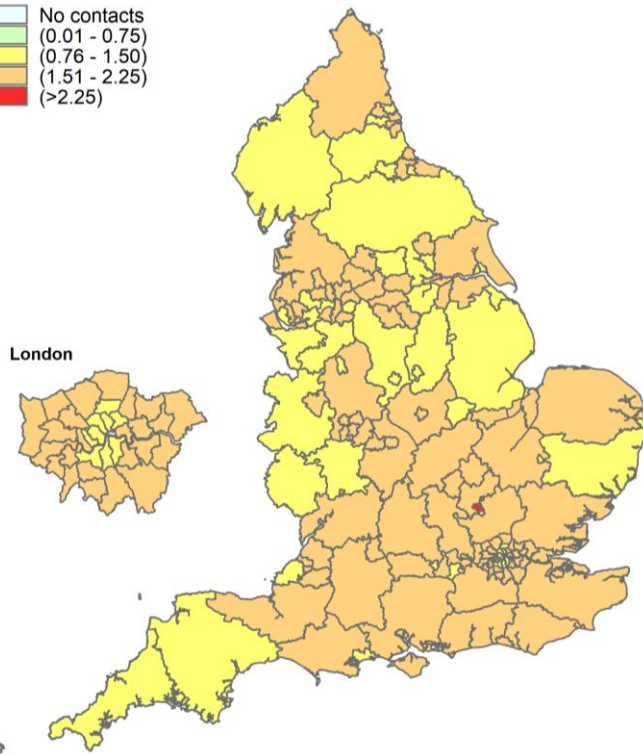
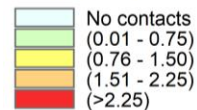
Contact tracing – 7 day

Data extracted 16 November 2020 – data up to 15 November 2020

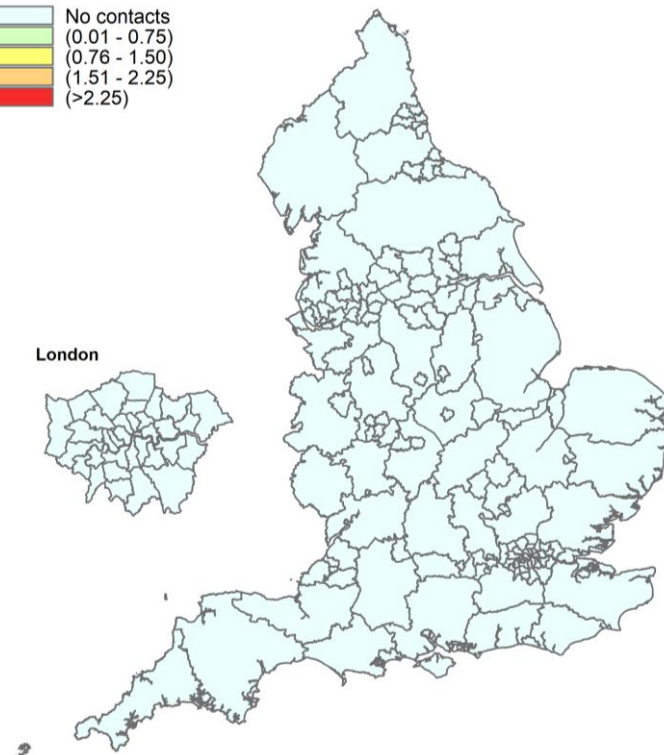
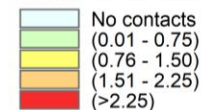
Median number of contacts per case by setting (household or other) by lower-tier local authority, England, overall from **9 November to 15 November 2020** (NHS Test and Trace).

Note that contacts with unknown geography are assigned to the upper-tier local authority of the case that identified them.

Contacts by household 7 day



Contacts by other setting 7 day



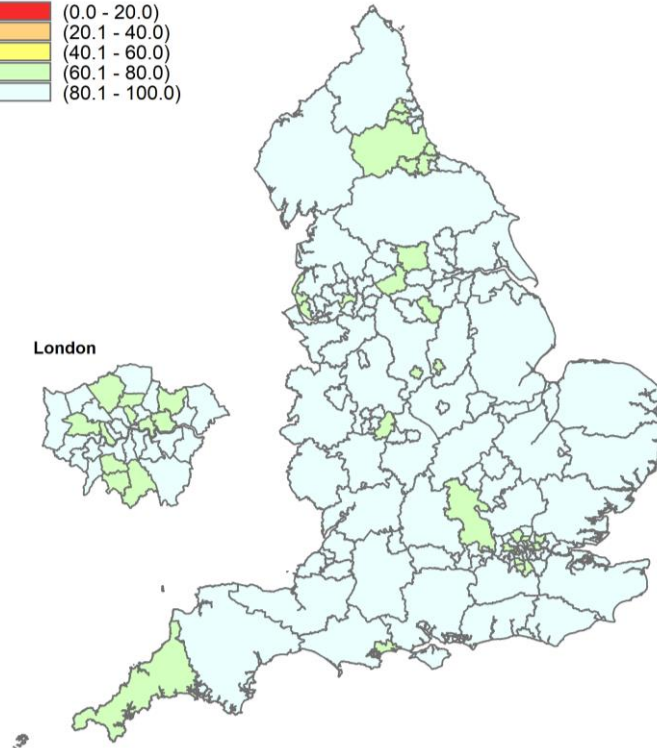
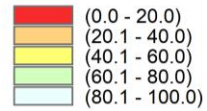
Contact tracing – 7 day

Data extracted 16 November 2020 – data up to 15 November 2020

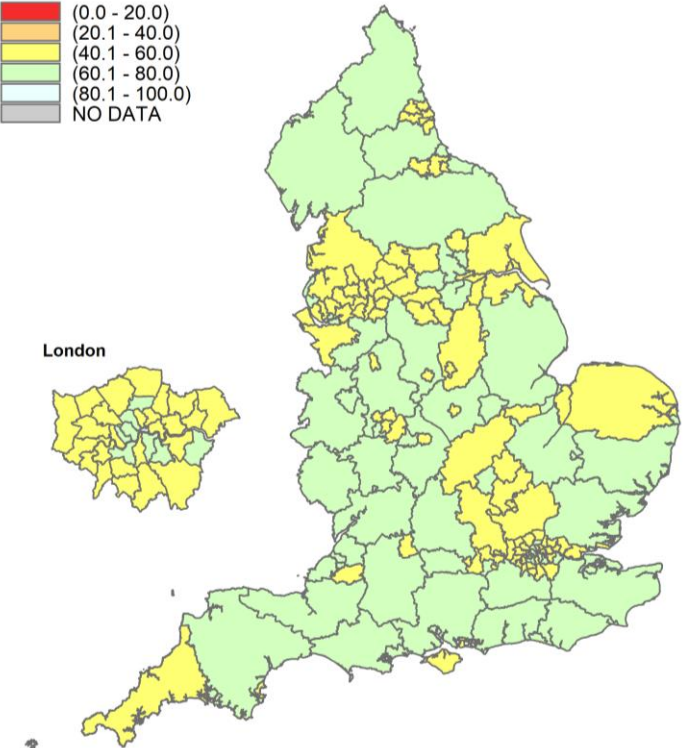
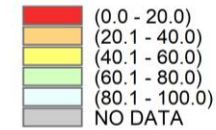
Proportion of cases and contacts completing contact tracing by lower-tier local authority, England, overall from **9 November** to **15 November 2020** (NHS Test and Trace).

Note that contacts with unknown geography are assigned to the upper-tier local authority of the case that identified them.

Completion by case 7 day



Completion by contact 7 day



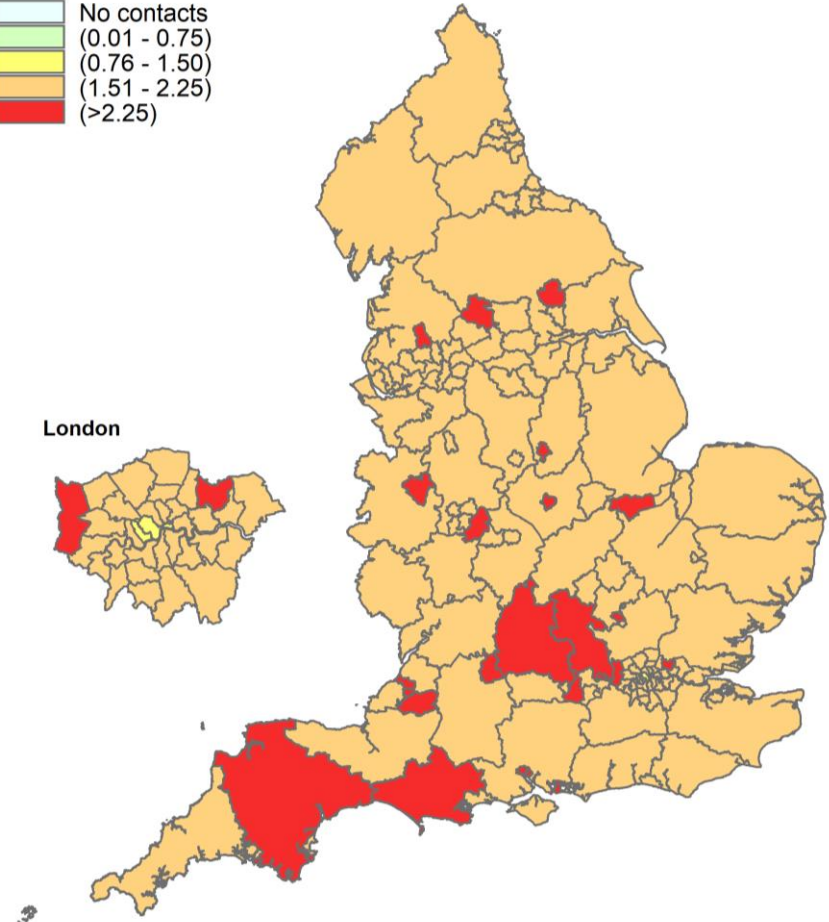
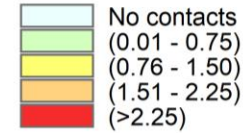
Contact tracing – cumulative

Data extracted 16 November 2020 – data up to 15 November 2020

Median number of individual contacts per case by lower-tier local authority, England, overall from **28 May** to **15 November 2020** (NHS Test and Trace).

Note this excludes contacts identified as part of complex situations managed by Level 1.

Median contacts per case cumulative

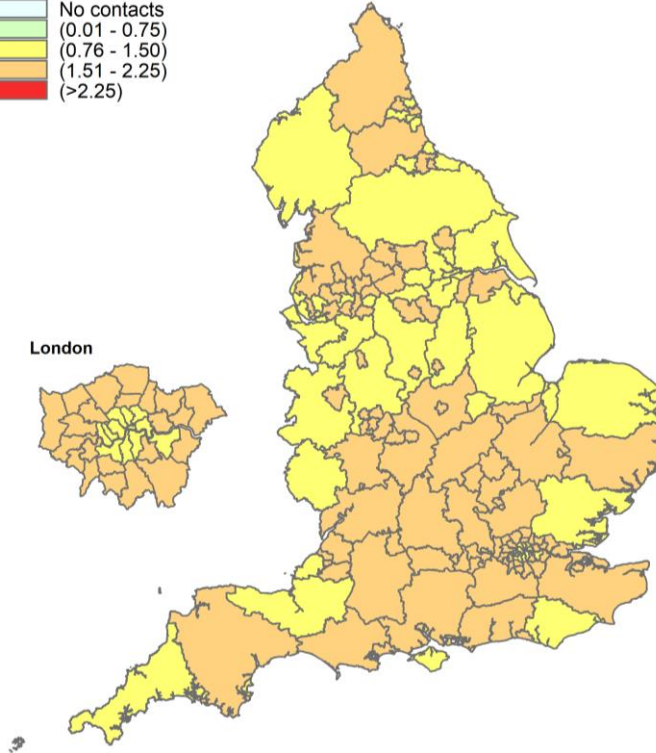
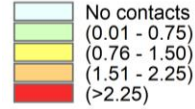


Contact tracing – cumulative

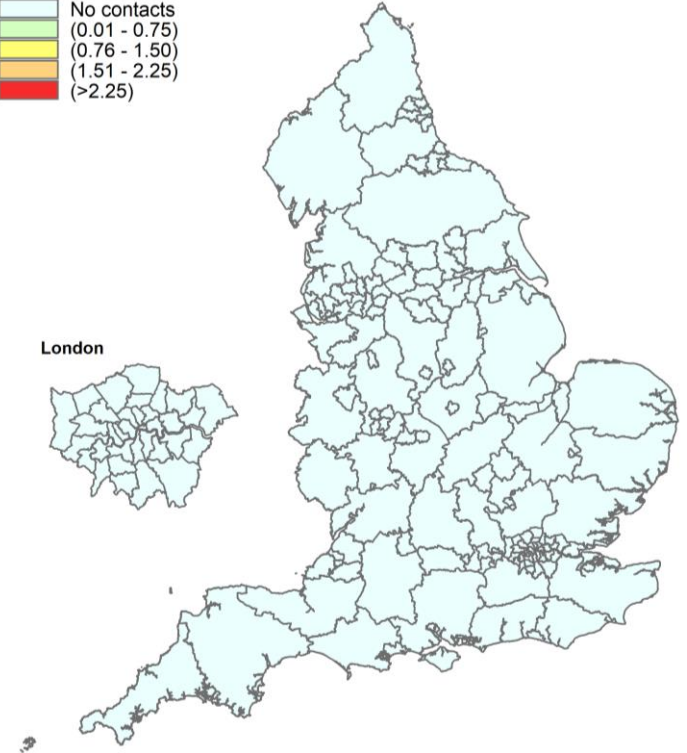
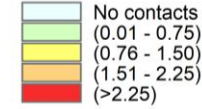
Data extracted 16 November 2020 – data up to 15 November 2020

Median number of contacts per case by setting (household or other) by lower-tier local authority, England, overall from **28 May to 15 November 2020** (NHS Test and Trace).

Contacts by household cumulative



Contacts by other setting cumulative

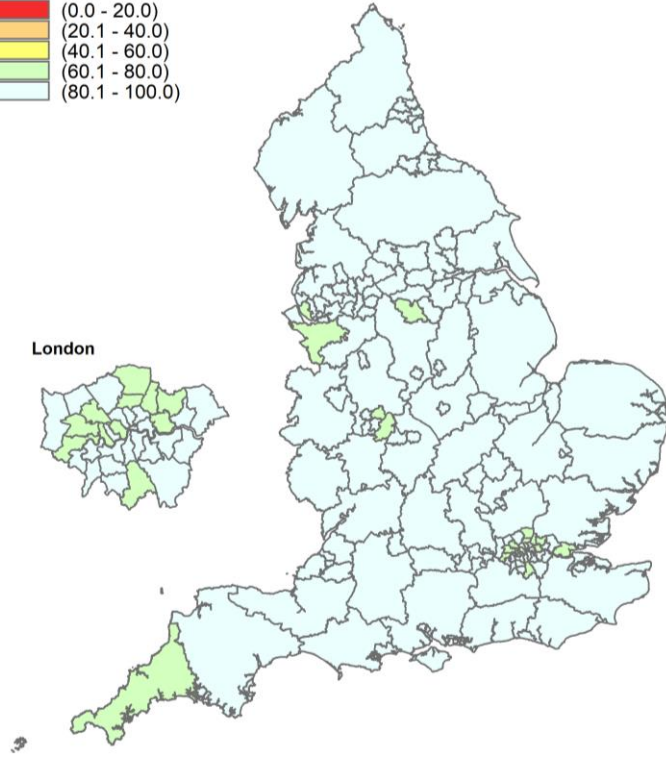
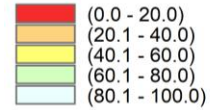


Contact tracing – cumulative

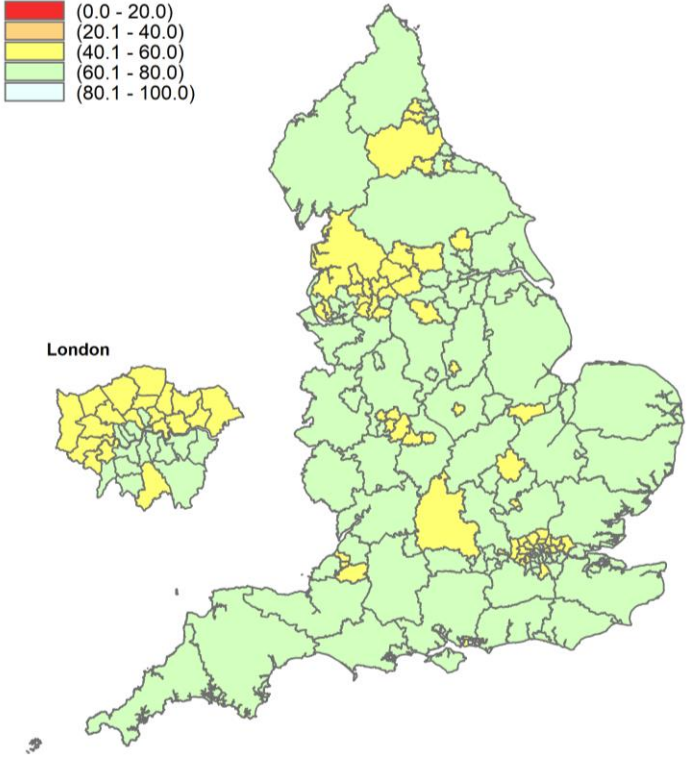
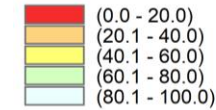
Data extracted 16 November 2020 – data up to 15 November 2020

Proportion of cases and contacts completing contact tracing by lower-tier local authority, England, overall from **28 May to 15 November 2020** (NHS Test and Trace).

Completion by case cumulative



Completion by contact cumulative

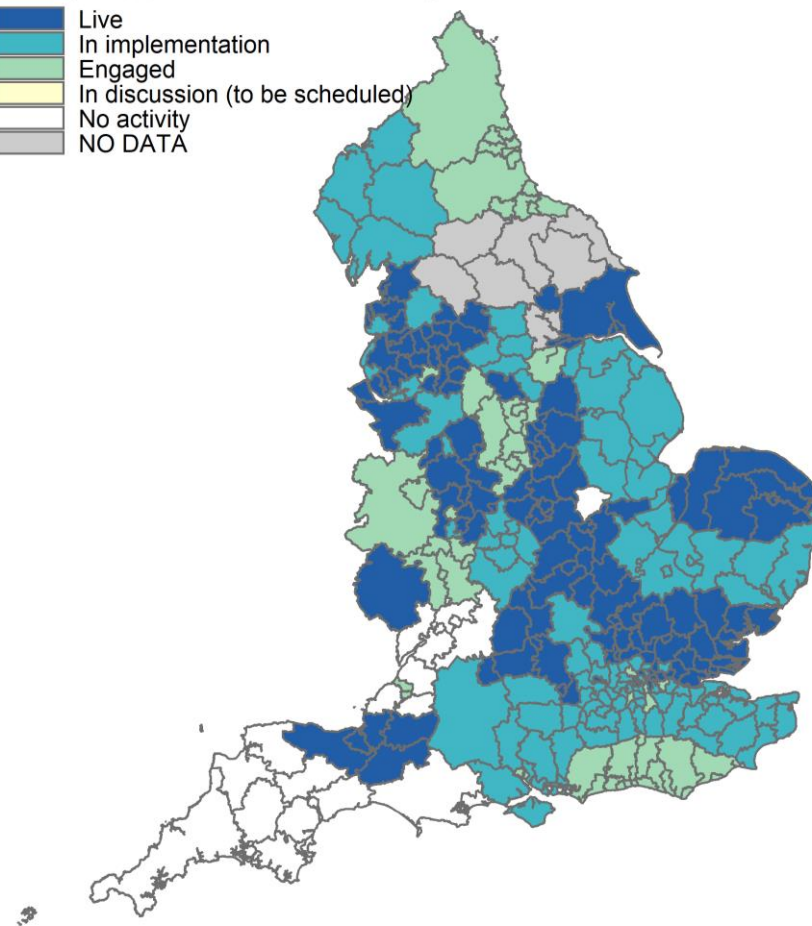


Locally supported contact tracing

Data extracted 13 November 2020

Locally supported contact tracing

- Live
- In implementation
- Engaged
- In discussion (to be scheduled)
- No activity
- NO DATA

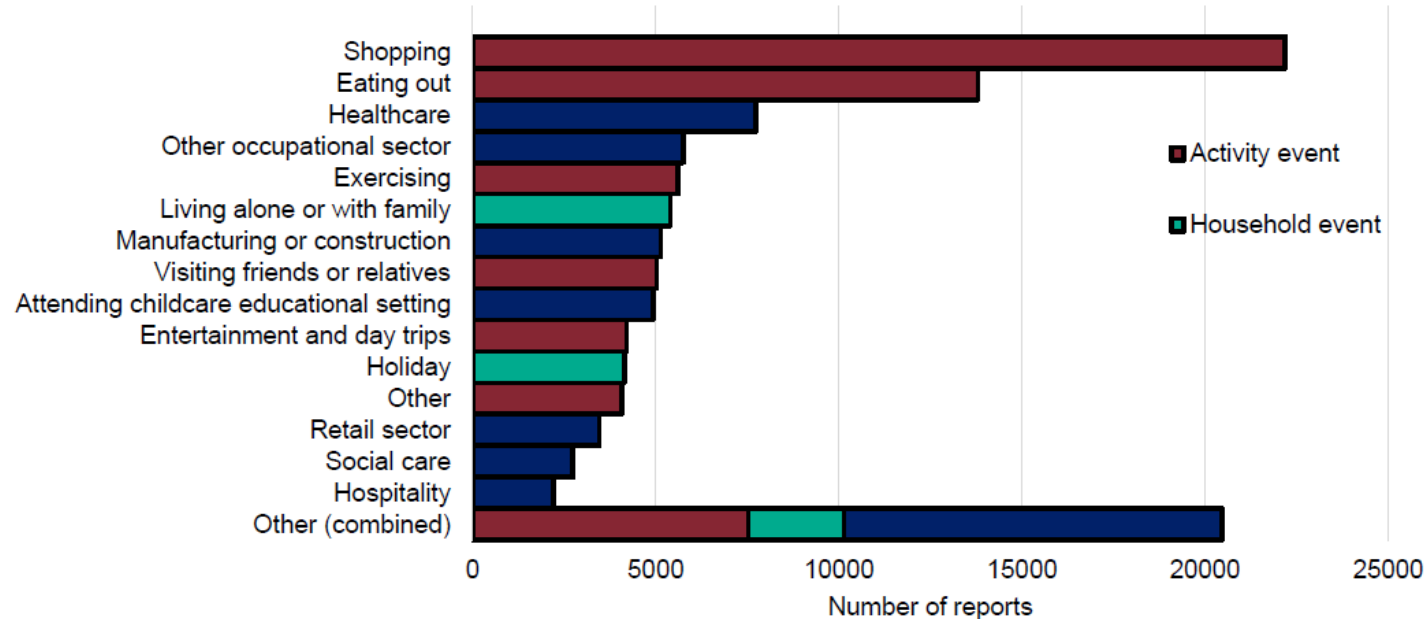


Enhanced contact tracing

Exposure setting for all reported contacts

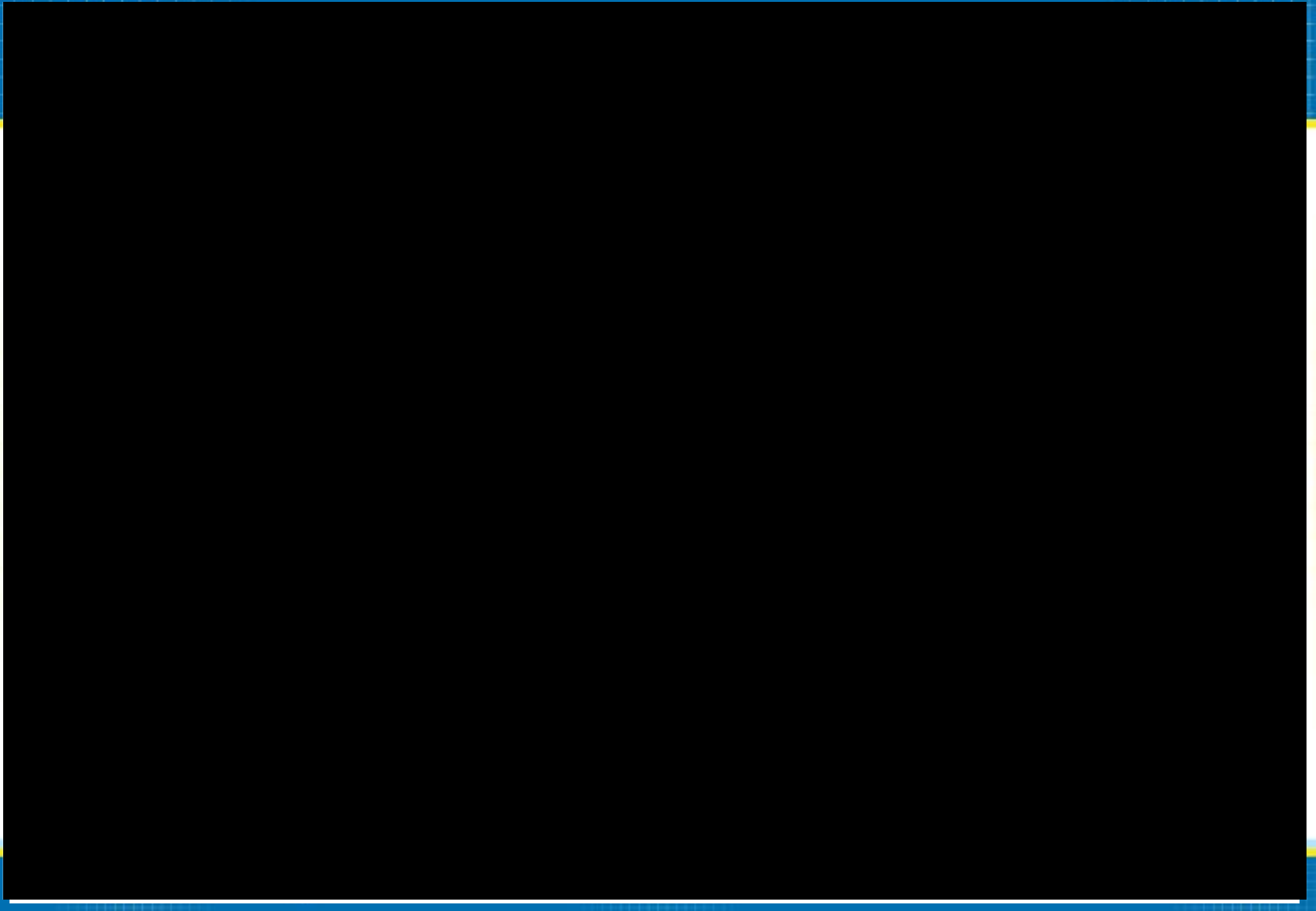
(Data source: NHS Test and Trace)

Events and activities reported by people testing positive, prior to symptom onset in week 45, England

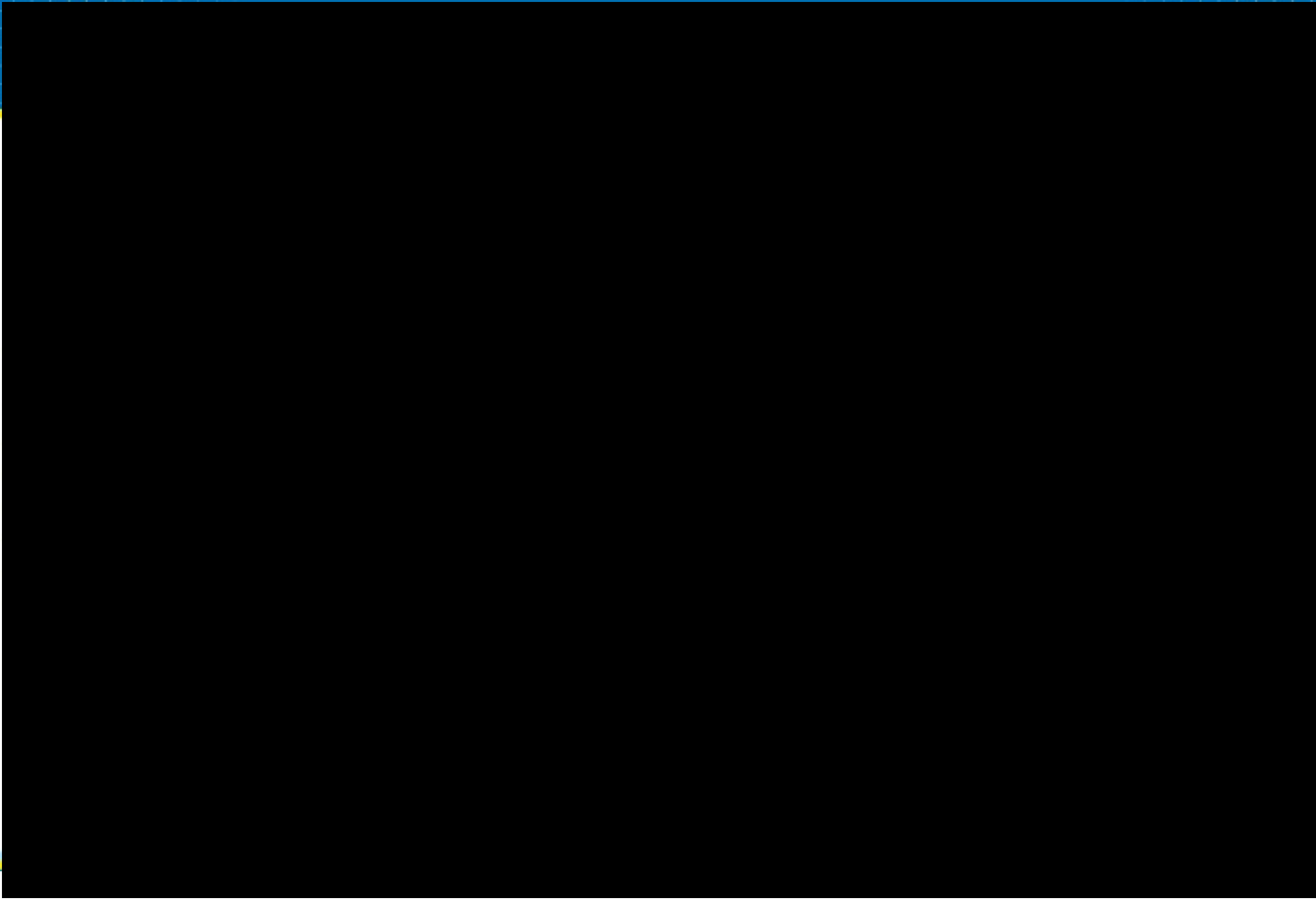


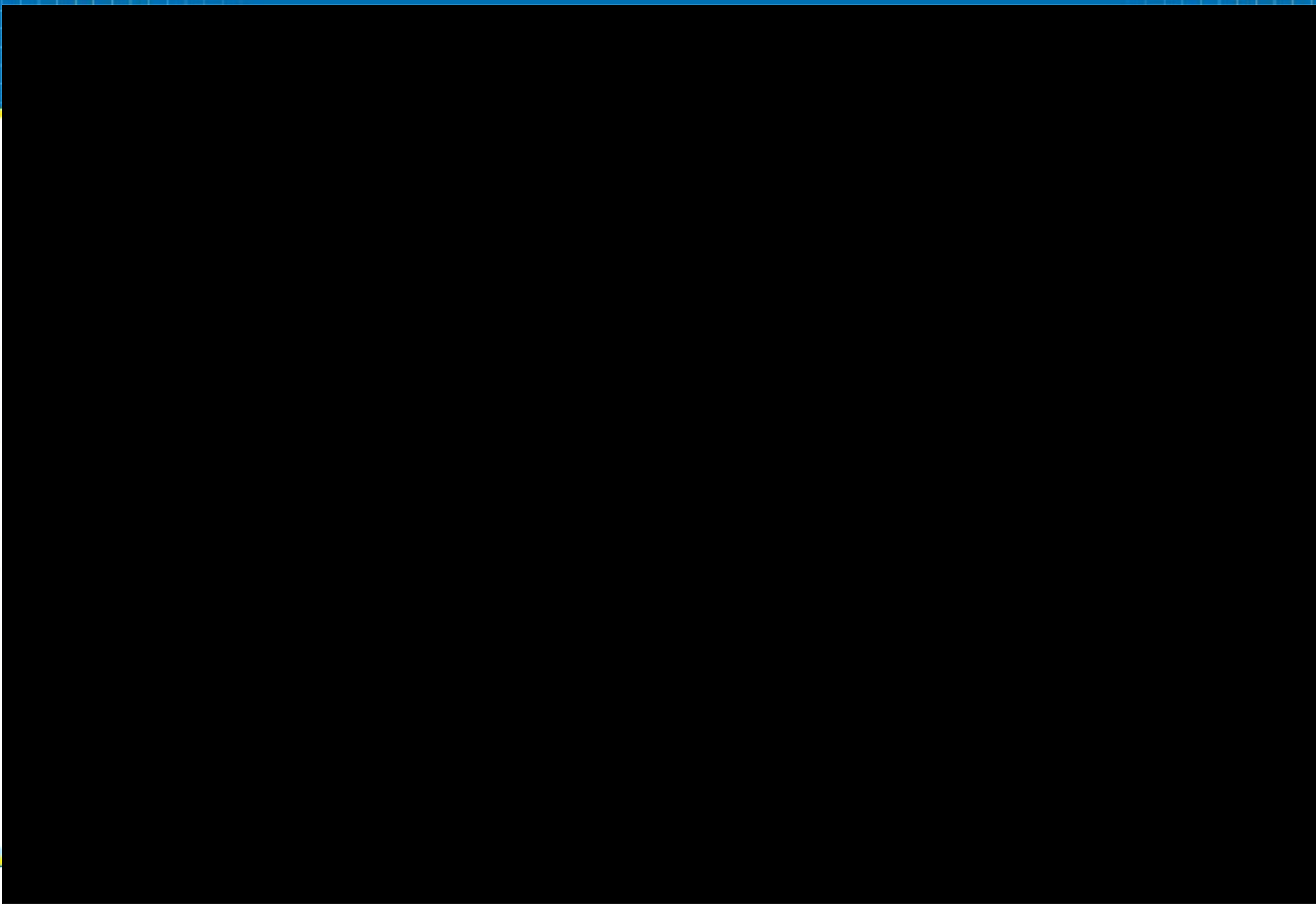
Note: 'Other' includes a wide range of different activities and settings, each of which has small numbers of individuals, as well as activities which did not fit any specific category and were added as Other by the case. This includes: (all within 'activities': Arts entertainment or recreation; Civil service or government; Close contact services; Community and charity activities; Critical national infrastructure; Emergency services; Financial services; Food production; Hospitality; Immigration border services; Information and communication; Military; Personal care; Prison; Private events and celebrations; Public events and mass gathering; event within a shared household; Sport events; Supported living; Teaching and education; Transport; 'Other (combined)' includes all exposure group types that have small counts such as "went to church", "went to the zoo" within that event type.

Data extracted 12 November 2020















Weekly report on Acute Respiratory Infection (ARI) Situations reported to PHE

Methodology, data sources and limitations

- We report on new acute respiratory infection (ARI) situations reported to Health Protection Teams (HPTs) and entered on HPZone in the previous reporting week by setting and locality.
- Daily and weekly aggregated surveillance reports are extracted from HPZone to generate the line listing.
- The weekly extracts include situations reported in the previous epidemiological week (Monday to Sunday) by locality and context (setting e.g. school)
- Situations associated with Educational settings and Workplaces undergo further investigation. Individual case notes are reviewed by an epidemiologist and an assessment made about whether the criteria for a confirmed COVID-19 cluster or outbreak are met. See definitions.
- Situations associated with Educational settings, Workplaces, Other settings and Food Outlets/ Restaurants are also further classified into sub-categories by review of individual records.
- It is important to note that many of these situations remain live and so the description presented here may not necessarily be final.
- Of note a national school helpline started operating on 17 September 2020 and a Universities helpline started operating on 7 October. This is likely to have had an impact on the number of situations/outbreaks being reported to HPTs in these settings.
- The denominator (the overall number of settings in each category) will differ by the setting category, for example there are fewer hospitals than workplaces, as will the propensity to report incidents to PHE. Therefore these data are more useful for monitoring trends over time than making comparisons across setting categories.
- Schools in England were closed for half-term during weeks 43 or/ and 44.
- The situations captured on HPZone represent a subset of all ongoing clusters and outbreaks in England rather than an exhaustive listing. A variety of arrangements are in place with local authorities and other stakeholders supporting HPTs, however data are not routinely documented on HPZone. As a result, the number of outbreaks reported for some of the regions are underestimates.

Definitions

Cluster: two or more test-confirmed cases of COVID-19 among individuals associated with a specific non-residential setting with illness onset dates within a 14-day period (in the absence of detailed information about the type of contact between the cases).

Outbreak: two or more test-confirmed cases of COVID-19 among individuals associated with a specific non-residential setting with illness onset dates within 14 days, and one of:

Identified direct exposure between at least 2 of the test-confirmed cases in that setting (for example under one metre face to face, or spending more than 15 minutes within 2 metres) during the infectious period of one of the cases

When there is no sustained local community transmission - absence of an alternative source of infection outside the setting for the initially identified cases



Sources of data and signposting

Internal reports/updates

- Weekly COVID19_Epidemiological Internal Update report
- COVID-19 Exceedance Daily Review
- All regions PHE Situations of Interest daily update
- PHE NHS Test and Trace: Weekly Contact Tracing Report
- PHE Daily Care Home Report
- PHE Educational settings weekly report for NERVTAG
- [COVID-19: nowcast and forecast](#)

Published reports

- [National flu and COVID-19 surveillance reports](#)
- [Weekly Coronavirus Disease 2019 \(COVID-19\) Surveillance Report](#)
- [COVID-19: number of outbreaks in care homes – management information](#)

Second Generation Surveillance System (SGSS)

Data as of 15 November 2020 00:00hrs

Laboratory-confirmed cases reported to PHE. SGSS data is further de-duplicated and cleaned by the PHE ICC Epidemiology Cell. The dataset includes all positive COVID-19 cases reported through both Pillar 1 and Pillar 2 testing. Numbers in most recent days may rise due to potential delays to data reporting and validation. The number of confirmed cases reflects both the case rate of infection and testing rates.

PHE Unified Sample Dataset (USD)

Data as of 16 November 2020 00:00hrs

Data on individuals testing negative for SARS-CoV2 in both Pillar 1 and 2. This data is deduplicated to only include one record for any individual who has had only negative samples

HPZone case and incident management system

Data as of 16 November 2020 08:00hrs

Only outbreaks reported to PHE are included. Absolute numbers should be interpreted with caution. Reporting practice is known to vary with time and geography. Community outbreaks exclude outbreaks reported from secondary care and care home settings.