

Dynamic CO-CIN report to SAGE and NERVTAG

Executive summary

Includes patients admitted on or after 01 December 2021

There are 7502 patients included in CO-CIN. Of these, 464 patient(s) have died and 1214 required ICU. 3906 have been discharged home.

Admission

Figure 1

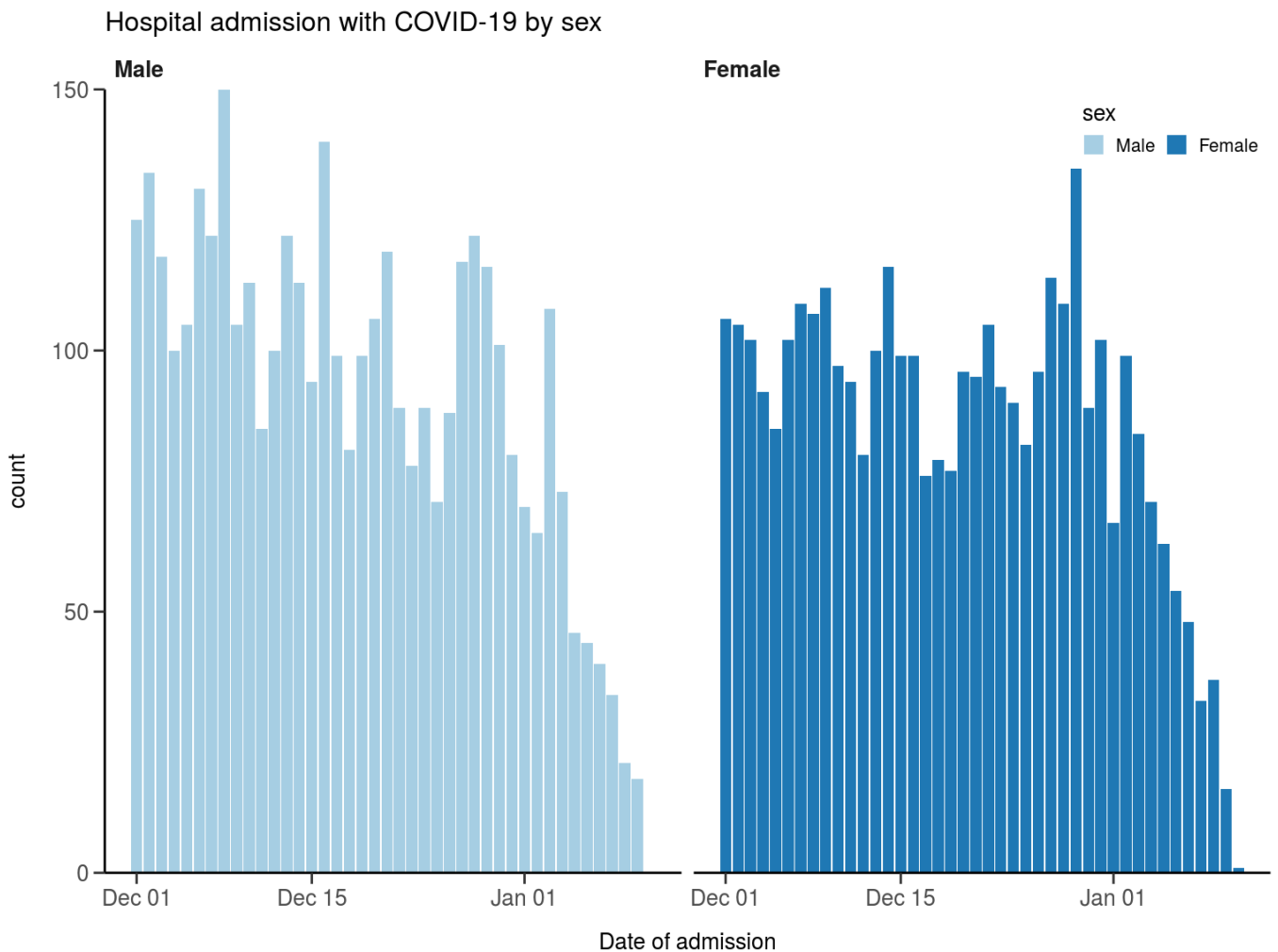
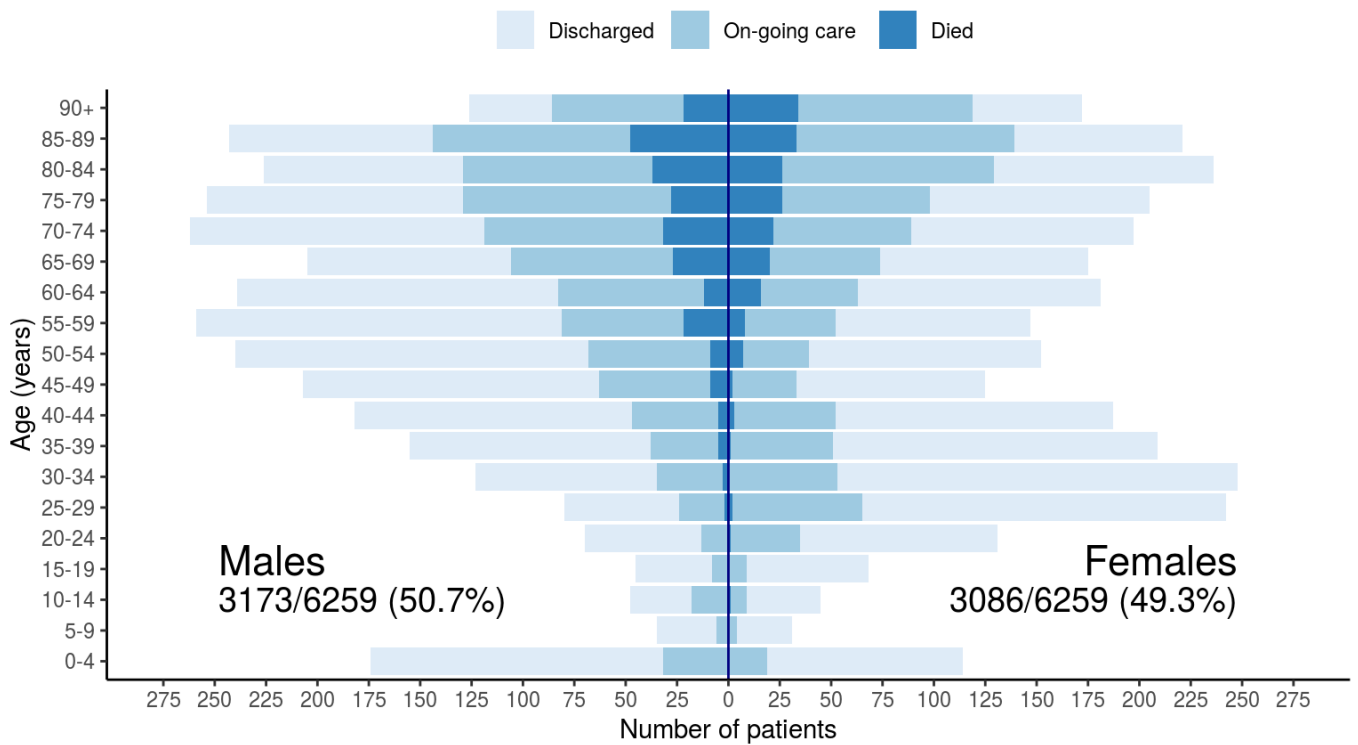


Figure 2

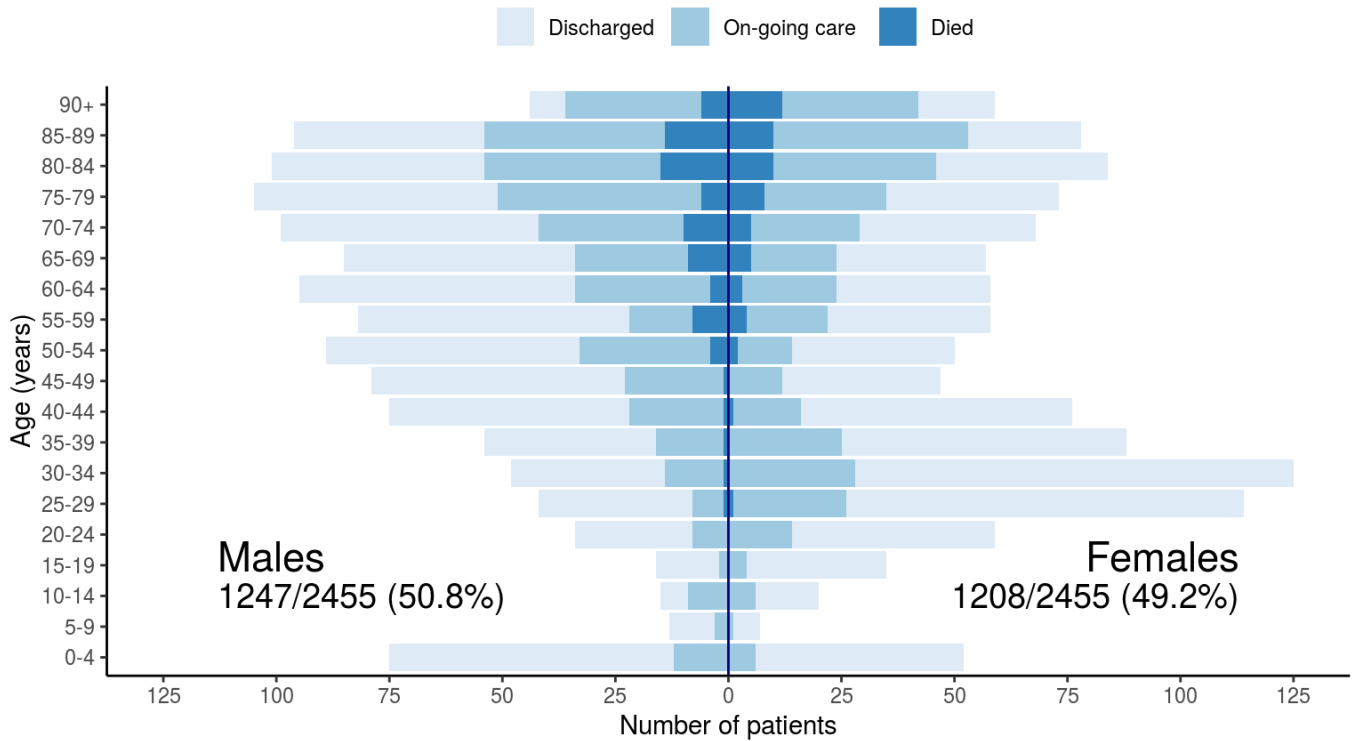
Patients with outcome stratified by age, and sex

All



Patients with outcome stratified by age, and sex

Admitted ≥ 14 days and ≤ 28 days ago

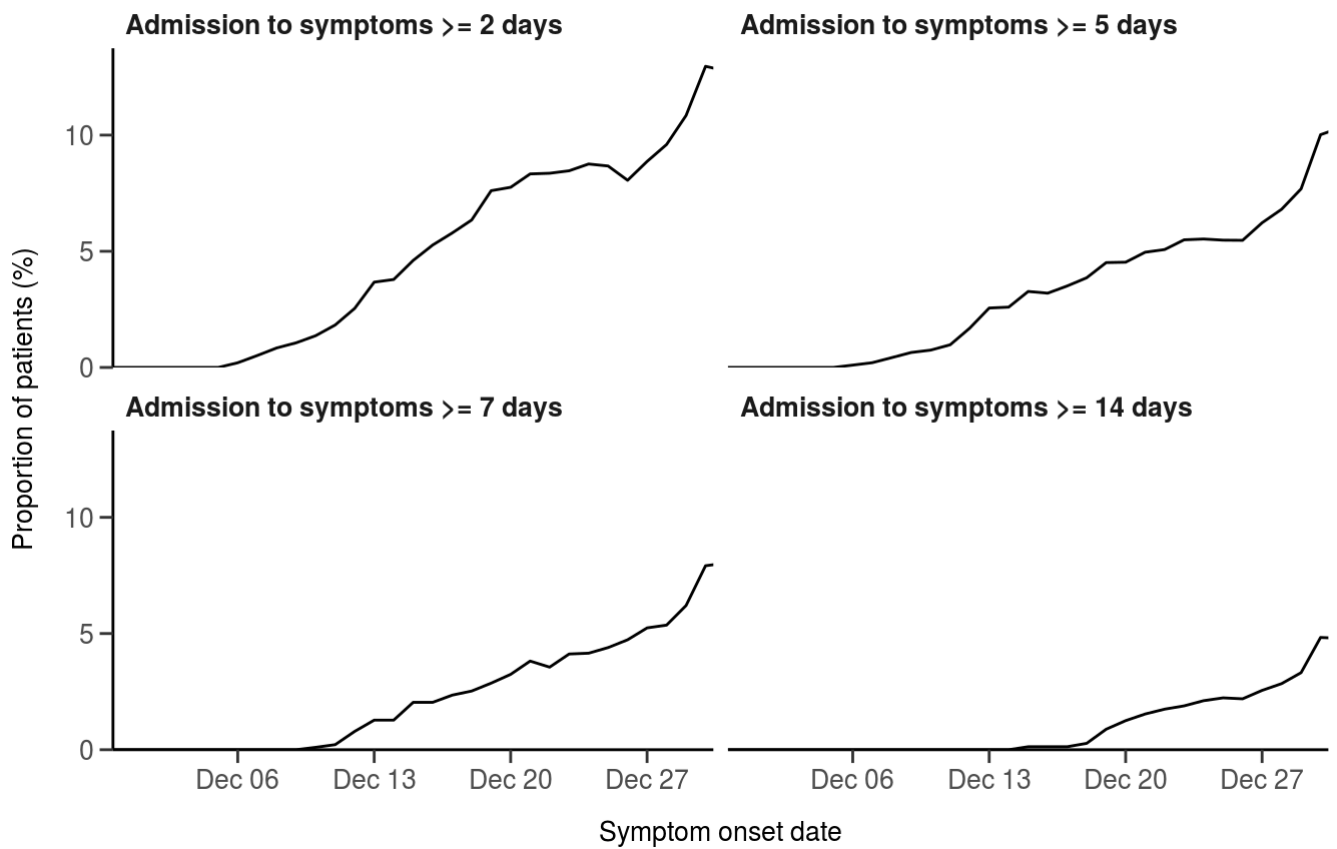


Nosocomial

Figure 3

Proportion with symptom onset occurring after hospital admission

7-day rolling percentage. n = 4805



Patient flow

Figure 4A - All patients

N = 6587

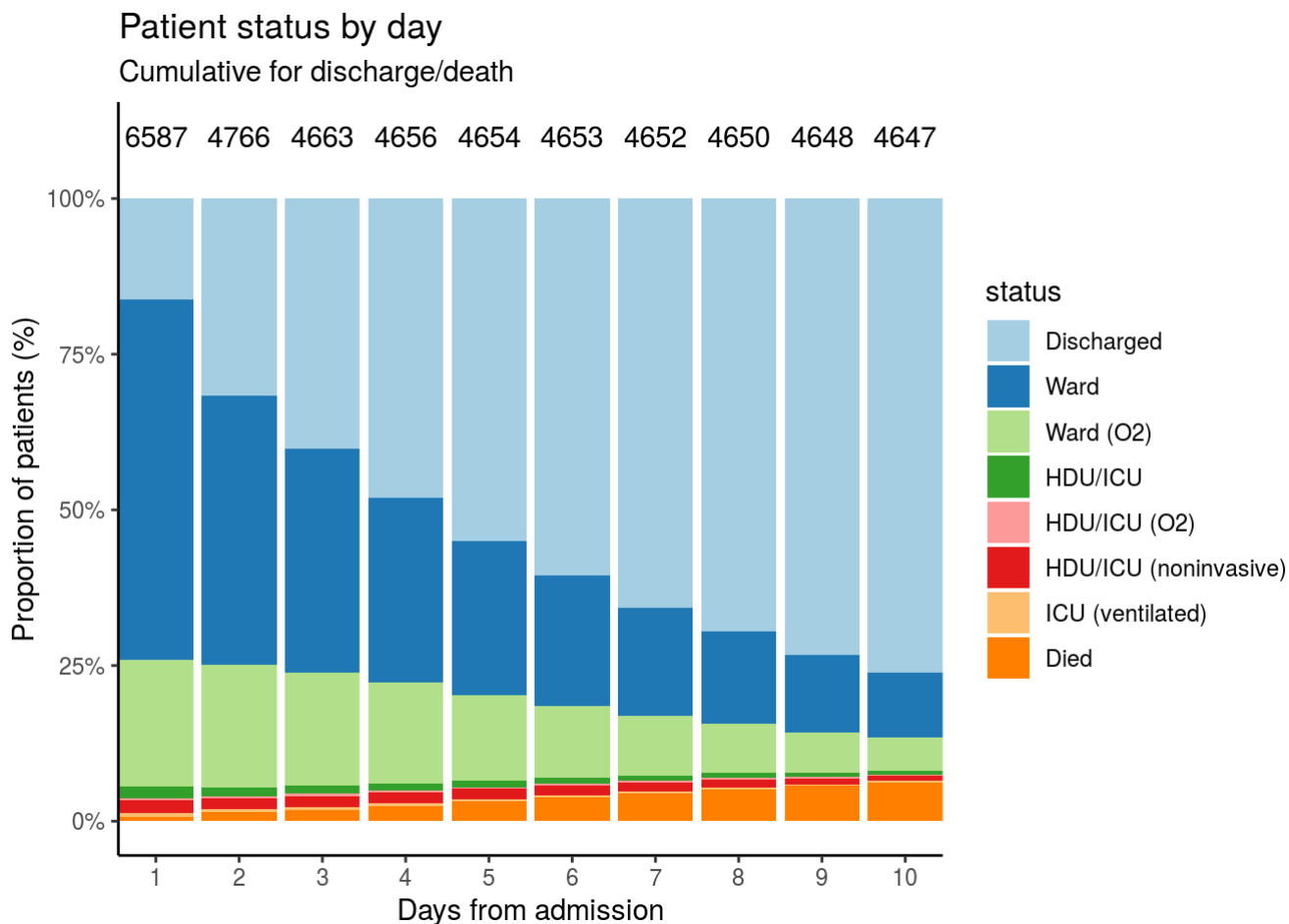
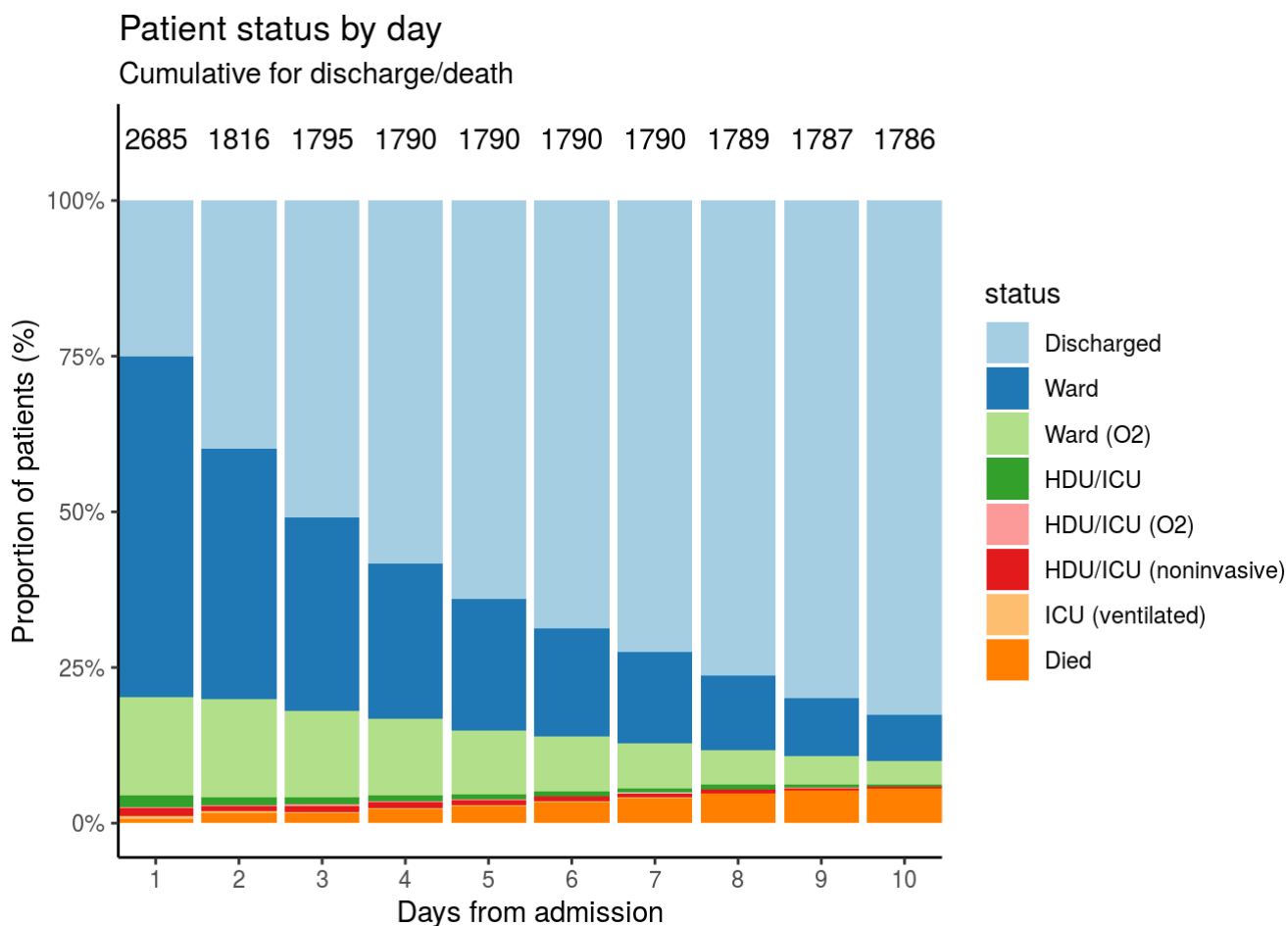


Figure 4B - Patients admitted ≥ 14 days and ≤ 28 days ago

N = 2685



Oxygen requirement

Figure 5A - All patients

N = 5752

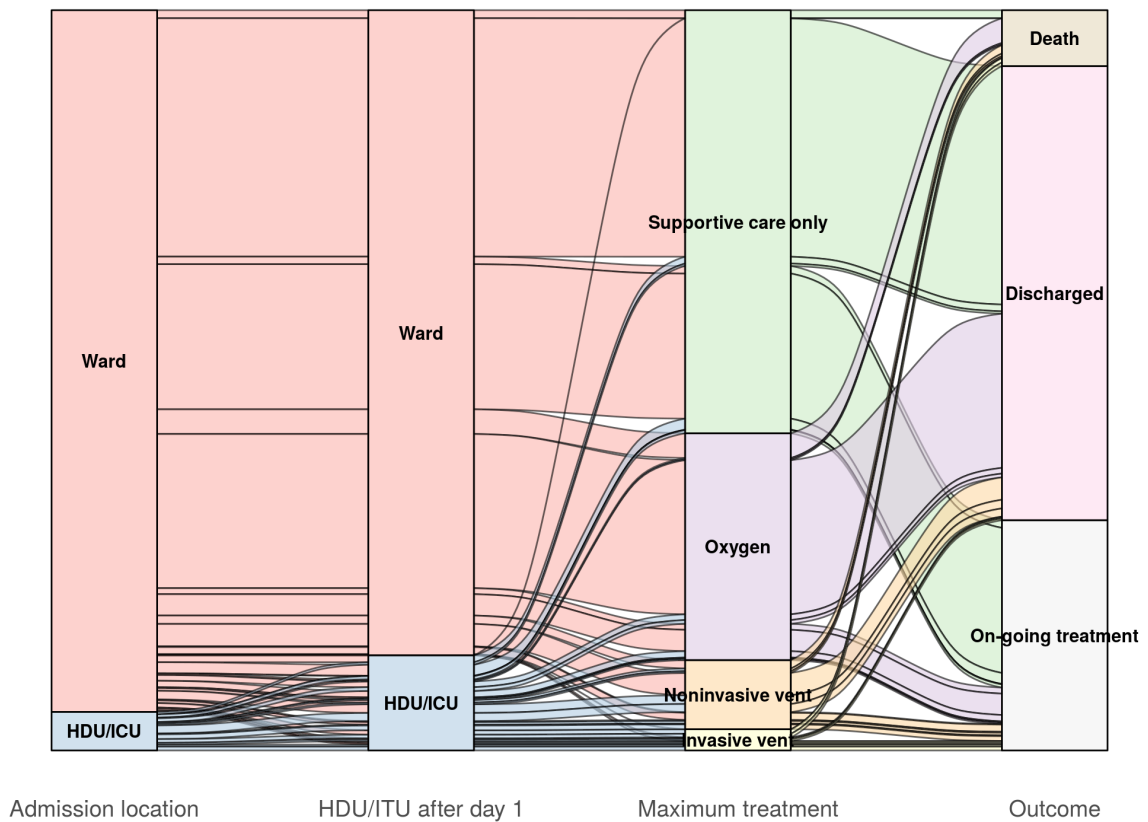
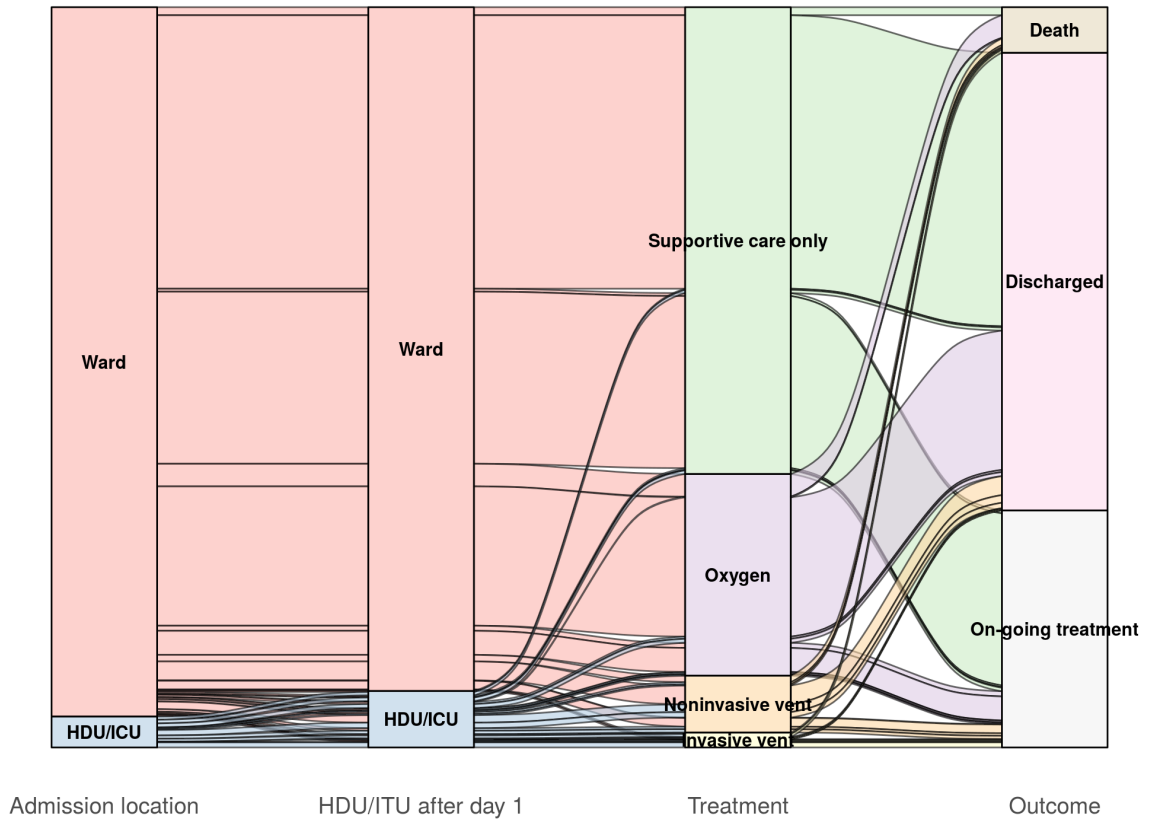


Figure 5B - Patients admitted ≥ 14 days and ≤ 28 days ago

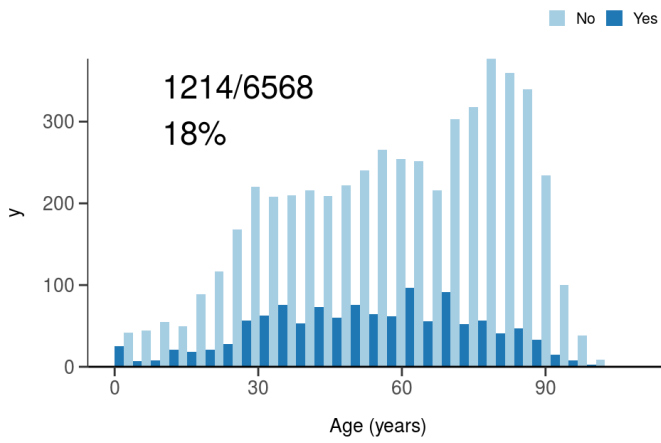
N = 2116



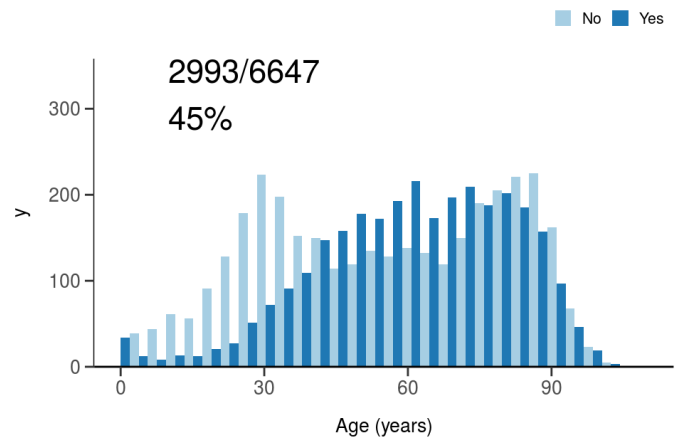
Treatment

Figure 6

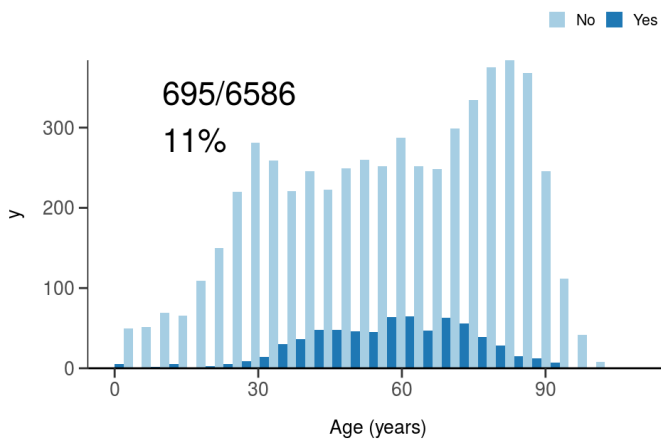
ICU/HDU admission
Figure 10A



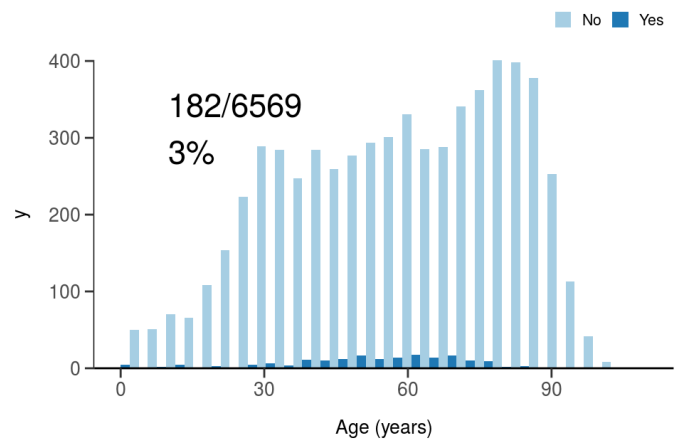
High flow oxygen
Figure 10B



Noninvasive ventilation
Figure 10C



Invasive ventilation
Figure 10D



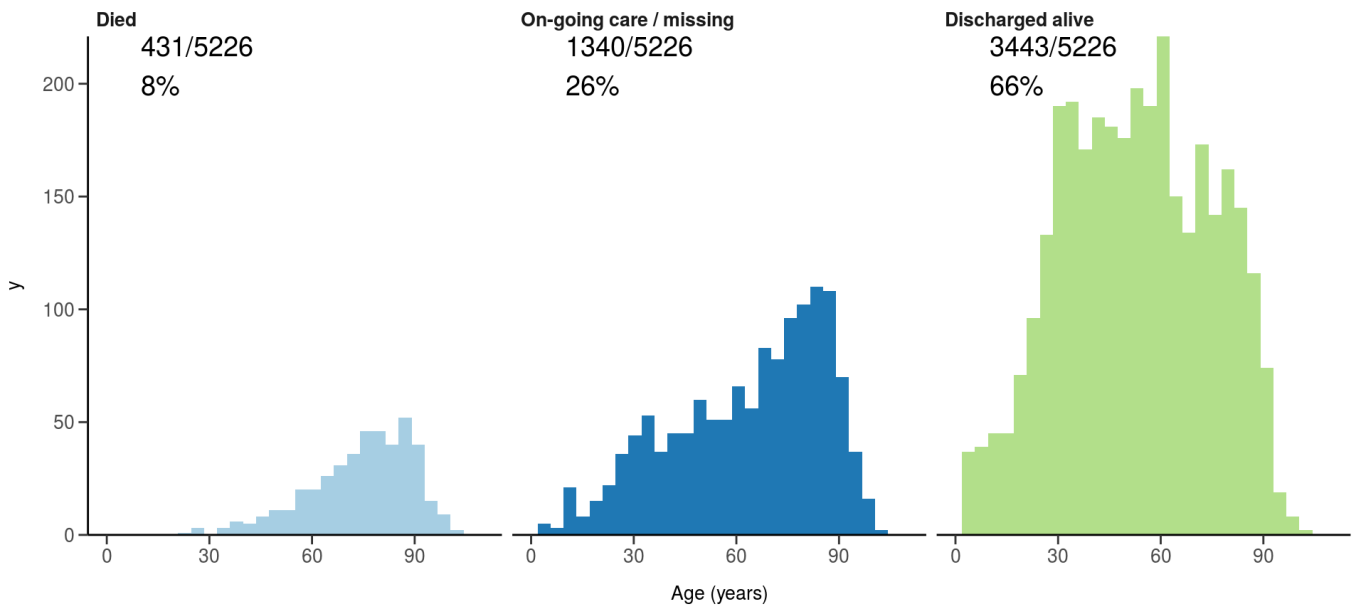
Status in patients admitted ≥ 14 days from today

Figure 7

Where outcome is not reported, on-going care is assumed.

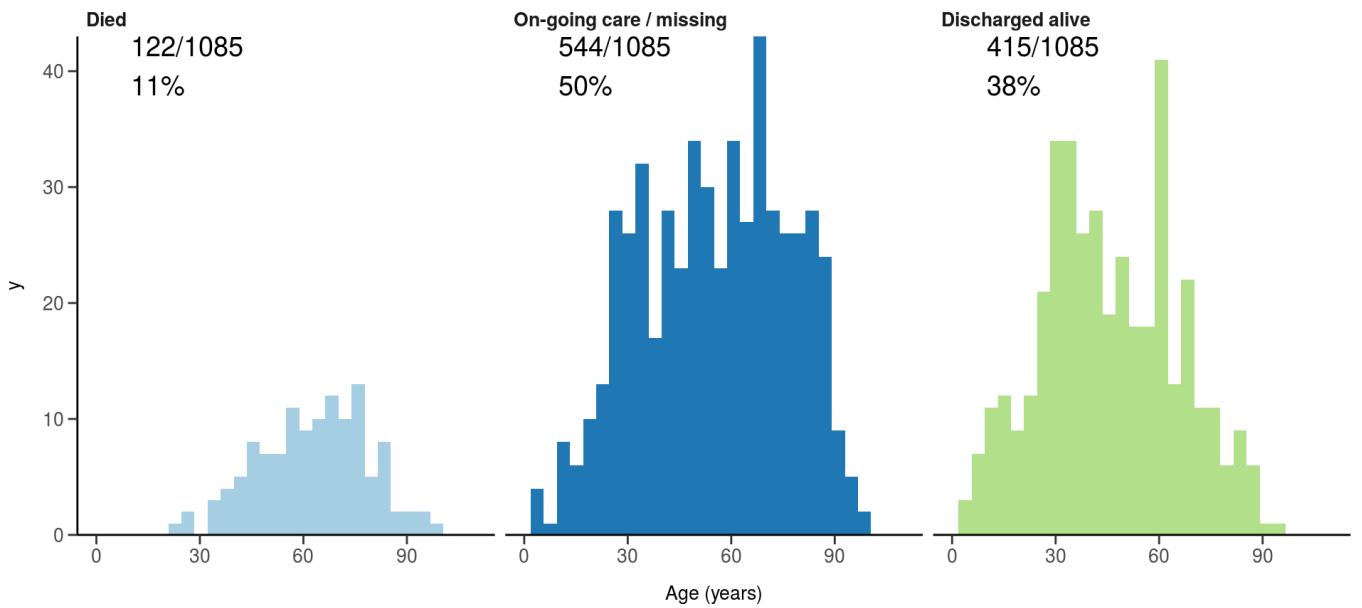
All: status in patients admitted ≥ 14 days ago

Figure 11A



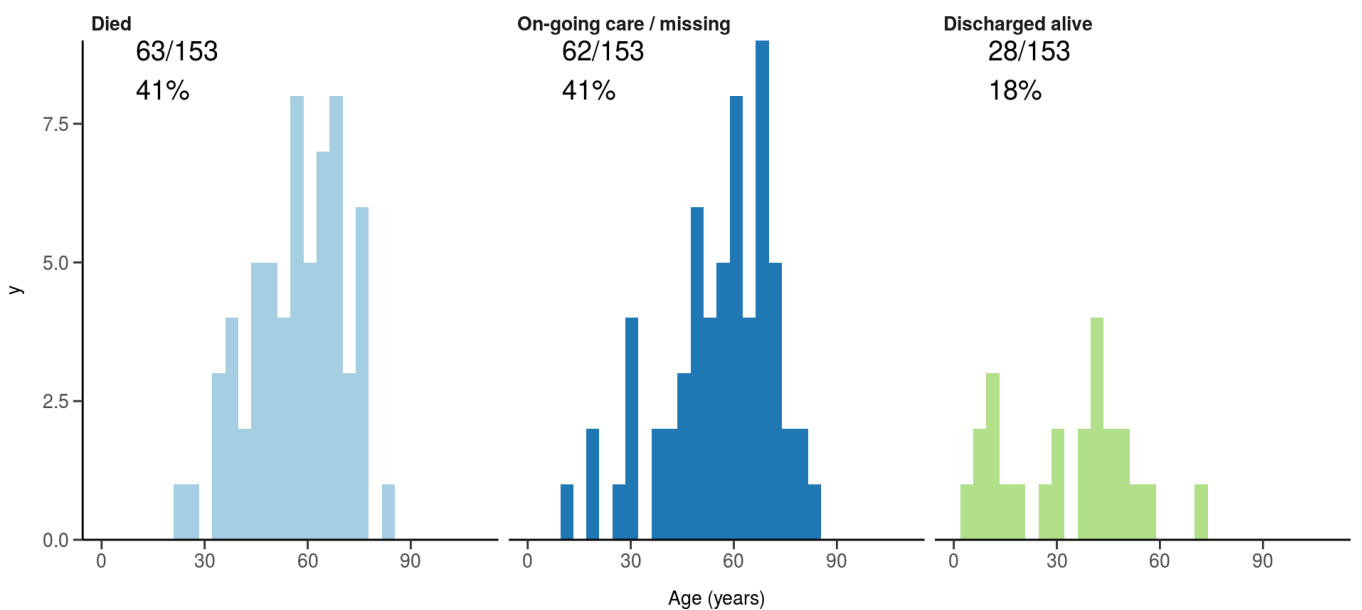
ICU/HDU admissions: status in patients admitted ≥ 14 days ago

Figure 11B



Invasive ventilation: status in patients admitted ≥ 14 days ago

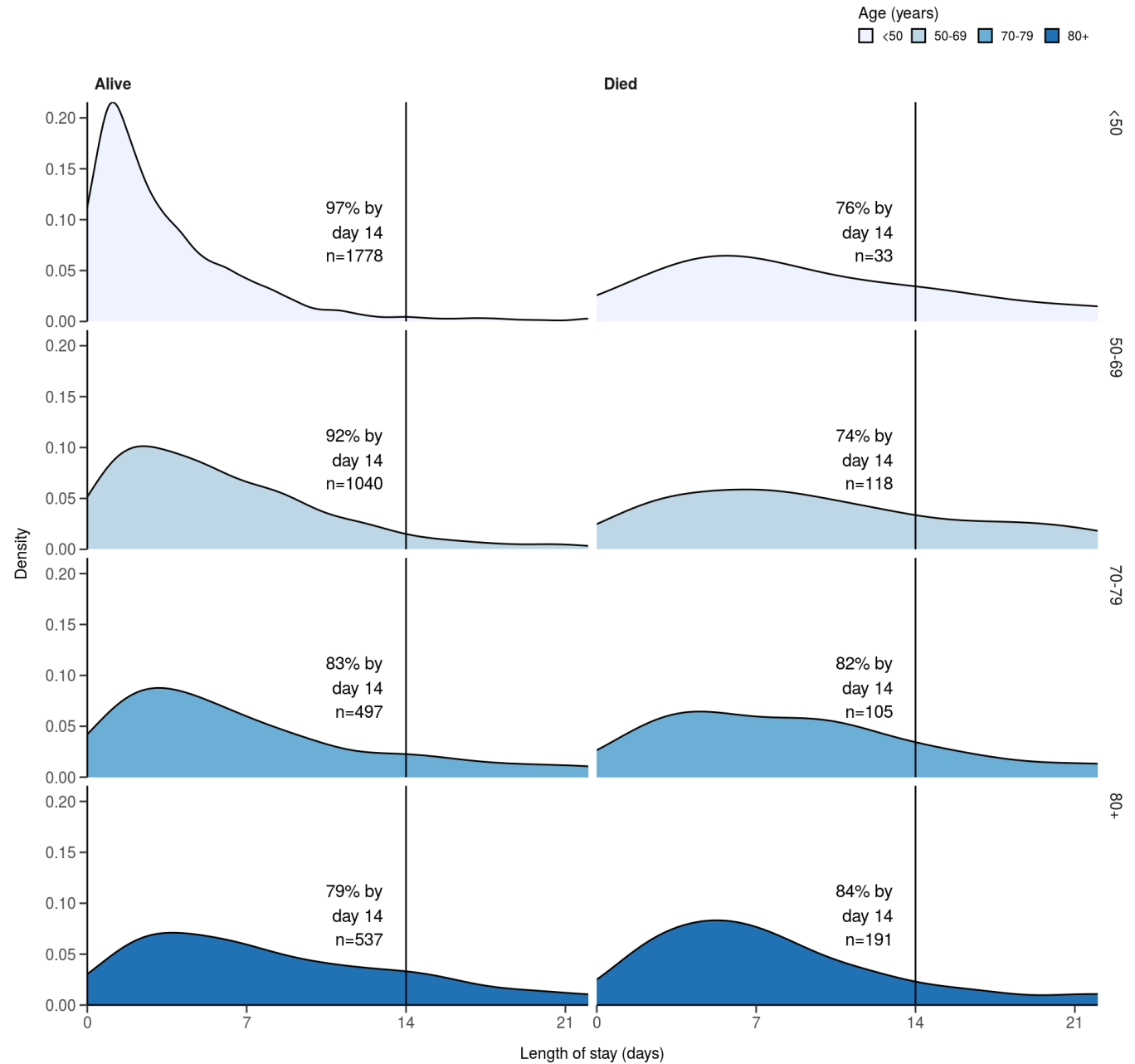
Figure 11c



Length of stay stratified by age

####Figure 8

Length of stay stratified by age and mortality
Proportion who reach outcome by day 14 shown



Data

Table for figure 2A

| age.factor | sex | status | n |
|------------|--------|---------------|-----|
| 0-4 | Male | Discharged | 142 |
| 0-4 | Male | On-going care | 32 |
| 0-4 | Female | Discharged | 95 |
| 0-4 | Female | On-going care | 19 |

| age.factor | sex | status | n |
|-------------------|------------|---------------|----------|
| 5-9 | Male | Discharged | 29 |
| 5-9 | Male | On-going care | 6 |
| 5-9 | Female | Discharged | 27 |
| 5-9 | Female | On-going care | 4 |
| 10-14 | Male | Discharged | 30 |
| 10-14 | Male | On-going care | 18 |
| 10-14 | Female | Discharged | 36 |
| 10-14 | Female | On-going care | 8 |
| 10-14 | Female | Died | 1 |
| 10-14 | NA | Discharged | 1 |
| 15-19 | Male | Discharged | 37 |
| 15-19 | Male | On-going care | 8 |
| 15-19 | Female | Discharged | 59 |
| 15-19 | Female | On-going care | 9 |
| 20-24 | Male | Discharged | 57 |
| 20-24 | Male | On-going care | 13 |
| 20-24 | Female | Discharged | 96 |
| 20-24 | Female | On-going care | 34 |
| 20-24 | Female | Died | 1 |
| 25-29 | Male | Discharged | 56 |
| 25-29 | Male | On-going care | 22 |
| 25-29 | Male | Died | 2 |
| 25-29 | Female | Discharged | 177 |
| 25-29 | Female | On-going care | 63 |
| 25-29 | Female | Died | 2 |
| 25-29 | NA | Discharged | 1 |
| 30-34 | Male | Discharged | 88 |
| 30-34 | Male | On-going care | 32 |
| 30-34 | Male | Died | 3 |
| 30-34 | Female | Discharged | 195 |
| 30-34 | Female | On-going care | 53 |
| 35-39 | Male | Discharged | 117 |

| age.factor | sex | status | n |
|-------------------|---------------|---------------|----------|
| 35-39 | Male | On-going care | 33 |
| 35-39 | Male | Died | 5 |
| 35-39 | Female | Discharged | 158 |
| 35-39 | Female | On-going care | 50 |
| 35-39 | Female | Died | 1 |
| 40-44 | Male | Discharged | 135 |
| 40-44 | Male | On-going care | 42 |
| 40-44 | Male | Died | 5 |
| 40-44 | Female | Discharged | 135 |
| 40-44 | Female | On-going care | 49 |
| 40-44 | Female | Died | 3 |
| 40-44 | Not specified | On-going care | 1 |
| 45-49 | Male | Discharged | 144 |
| 45-49 | Male | On-going care | 54 |
| 45-49 | Male | Died | 9 |
| 45-49 | Female | Discharged | 92 |
| 45-49 | Female | On-going care | 31 |
| 45-49 | Female | Died | 2 |
| 45-49 | Not specified | On-going care | 1 |
| 45-49 | NA | Discharged | 1 |
| 50-54 | Male | Discharged | 172 |
| 50-54 | Male | On-going care | 59 |
| 50-54 | Male | Died | 9 |
| 50-54 | Female | Discharged | 113 |
| 50-54 | Female | On-going care | 32 |
| 50-54 | Female | Died | 7 |
| 55-59 | Male | Discharged | 178 |
| 55-59 | Male | On-going care | 59 |
| 55-59 | Male | Died | 22 |
| 55-59 | Female | Discharged | 95 |
| 55-59 | Female | On-going care | 44 |
| 55-59 | Female | Died | 8 |

| age.factor | sex | status | n |
|-------------------|---------------|---------------|----------|
| 55-59 | Not specified | Discharged | 1 |
| 55-59 | Not specified | On-going care | 1 |
| 60-64 | Male | Discharged | 156 |
| 60-64 | Male | On-going care | 71 |
| 60-64 | Male | Died | 12 |
| 60-64 | Female | Discharged | 118 |
| 60-64 | Female | On-going care | 47 |
| 60-64 | Female | Died | 16 |
| 65-69 | Male | Discharged | 99 |
| 65-69 | Male | On-going care | 79 |
| 65-69 | Male | Died | 27 |
| 65-69 | Female | Discharged | 101 |
| 65-69 | Female | On-going care | 54 |
| 65-69 | Female | Died | 20 |
| 65-69 | Not specified | On-going care | 3 |
| 70-74 | Male | Discharged | 143 |
| 70-74 | Male | On-going care | 87 |
| 70-74 | Male | Died | 32 |
| 70-74 | Female | Discharged | 108 |
| 70-74 | Female | On-going care | 67 |
| 70-74 | Female | Died | 22 |
| 70-74 | NA | Discharged | 1 |
| 75-79 | Male | Discharged | 125 |
| 75-79 | Male | On-going care | 101 |
| 75-79 | Male | Died | 28 |
| 75-79 | Female | Discharged | 107 |
| 75-79 | Female | On-going care | 72 |
| 75-79 | Female | Died | 26 |
| 75-79 | Not specified | On-going care | 1 |
| 80-84 | Male | Discharged | 97 |
| 80-84 | Male | On-going care | 92 |
| 80-84 | Male | Died | 37 |

| age.factor | sex | status | n |
|-------------------|---------------|---------------|----------|
| 80-84 | Female | Discharged | 107 |
| 80-84 | Female | On-going care | 103 |
| 80-84 | Female | Died | 26 |
| 80-84 | Not specified | Discharged | 1 |
| 85-89 | Male | Discharged | 99 |
| 85-89 | Male | On-going care | 96 |
| 85-89 | Male | Died | 48 |
| 85-89 | Female | Discharged | 82 |
| 85-89 | Female | On-going care | 106 |
| 85-89 | Female | Died | 33 |
| 90+ | Male | Discharged | 40 |
| 90+ | Male | On-going care | 64 |
| 90+ | Male | Died | 22 |
| 90+ | Female | Discharged | 53 |
| 90+ | Female | On-going care | 85 |
| 90+ | Female | Died | 34 |
| 90+ | NA | Died | 1 |

Table for figure 2B

| age.factor | sex | status | n |
|-------------------|------------|---------------|----------|
| 0-4 | Male | Discharged | 63 |
| 0-4 | Male | On-going care | 12 |
| 0-4 | Female | Discharged | 46 |
| 0-4 | Female | On-going care | 6 |
| 5-9 | Male | Discharged | 10 |
| 5-9 | Male | On-going care | 3 |
| 5-9 | Female | Discharged | 6 |
| 5-9 | Female | On-going care | 1 |
| 10-14 | Male | Discharged | 6 |
| 10-14 | Male | On-going care | 9 |
| 10-14 | Female | Discharged | 14 |
| 10-14 | Female | On-going care | 6 |

| age.factor | sex | status | n |
|-------------------|------------|---------------|----------|
| 15-19 | Male | Discharged | 14 |
| 15-19 | Male | On-going care | 2 |
| 15-19 | Female | Discharged | 31 |
| 15-19 | Female | On-going care | 4 |
| 20-24 | Male | Discharged | 26 |
| 20-24 | Male | On-going care | 8 |
| 20-24 | Female | Discharged | 45 |
| 20-24 | Female | On-going care | 14 |
| 25-29 | Male | Discharged | 34 |
| 25-29 | Male | On-going care | 7 |
| 25-29 | Male | Died | 1 |
| 25-29 | Female | Discharged | 88 |
| 25-29 | Female | On-going care | 25 |
| 25-29 | Female | Died | 1 |
| 30-34 | Male | Discharged | 34 |
| 30-34 | Male | On-going care | 13 |
| 30-34 | Male | Died | 1 |
| 30-34 | Female | Discharged | 97 |
| 30-34 | Female | On-going care | 28 |
| 35-39 | Male | Discharged | 38 |
| 35-39 | Male | On-going care | 15 |
| 35-39 | Male | Died | 1 |
| 35-39 | Female | Discharged | 63 |
| 35-39 | Female | On-going care | 25 |
| 40-44 | Male | Discharged | 53 |
| 40-44 | Male | On-going care | 21 |
| 40-44 | Male | Died | 1 |
| 40-44 | Female | Discharged | 60 |
| 40-44 | Female | On-going care | 15 |
| 40-44 | Female | Died | 1 |
| 45-49 | Male | Discharged | 56 |
| 45-49 | Male | On-going care | 22 |

| age.factor | sex | status | n |
|-------------------|------------|---------------|----------|
| 45-49 | Male | Died | 1 |
| 45-49 | Female | Discharged | 35 |
| 45-49 | Female | On-going care | 12 |
| 50-54 | Male | Discharged | 56 |
| 50-54 | Male | On-going care | 29 |
| 50-54 | Male | Died | 4 |
| 50-54 | Female | Discharged | 36 |
| 50-54 | Female | On-going care | 12 |
| 50-54 | Female | Died | 2 |
| 55-59 | Male | Discharged | 60 |
| 55-59 | Male | On-going care | 14 |
| 55-59 | Male | Died | 8 |
| 55-59 | Female | Discharged | 36 |
| 55-59 | Female | On-going care | 18 |
| 55-59 | Female | Died | 4 |
| 60-64 | Male | Discharged | 61 |
| 60-64 | Male | On-going care | 30 |
| 60-64 | Male | Died | 4 |
| 60-64 | Female | Discharged | 34 |
| 60-64 | Female | On-going care | 21 |
| 60-64 | Female | Died | 3 |
| 65-69 | Male | Discharged | 51 |
| 65-69 | Male | On-going care | 25 |
| 65-69 | Male | Died | 9 |
| 65-69 | Female | Discharged | 33 |
| 65-69 | Female | On-going care | 19 |
| 65-69 | Female | Died | 5 |
| 70-74 | Male | Discharged | 57 |
| 70-74 | Male | On-going care | 32 |
| 70-74 | Male | Died | 10 |
| 70-74 | Female | Discharged | 39 |
| 70-74 | Female | On-going care | 24 |

| age.factor | sex | status | n |
|-------------------|------------|---------------|----------|
| 70-74 | Female | Died | 5 |
| 70-74 | NA | Discharged | 1 |
| 75-79 | Male | Discharged | 54 |
| 75-79 | Male | On-going care | 45 |
| 75-79 | Male | Died | 6 |
| 75-79 | Female | Discharged | 38 |
| 75-79 | Female | On-going care | 27 |
| 75-79 | Female | Died | 8 |
| 80-84 | Male | Discharged | 47 |
| 80-84 | Male | On-going care | 39 |
| 80-84 | Male | Died | 15 |
| 80-84 | Female | Discharged | 38 |
| 80-84 | Female | On-going care | 36 |
| 80-84 | Female | Died | 10 |
| 85-89 | Male | Discharged | 42 |
| 85-89 | Male | On-going care | 40 |
| 85-89 | Male | Died | 14 |
| 85-89 | Female | Discharged | 25 |
| 85-89 | Female | On-going care | 43 |
| 85-89 | Female | Died | 10 |
| 90+ | Male | Discharged | 8 |
| 90+ | Male | On-going care | 30 |
| 90+ | Male | Died | 6 |
| 90+ | Female | Discharged | 17 |
| 90+ | Female | On-going care | 30 |
| 90+ | Female | Died | 12 |
| 90+ | NA | Died | 1 |

Table for figure 4A

| day | status | n |
|------------|---------------|----------|
| -1 | Discharged | 1 |
| 1 | Discharged | 1070 |

| day | status | n |
|------------|-----------------------|----------|
| 1 | Ward | 3811 |
| 1 | Ward (O2) | 1338 |
| 1 | HDU/ICU | 122 |
| 1 | HDU/ICU (O2) | 26 |
| 1 | HDU/ICU (noninvasive) | 138 |
| 1 | ICU (ventilated) | 39 |
| 1 | Died | 43 |
| 2 | Discharged | 1508 |
| 2 | Ward | 2057 |
| 2 | Ward (O2) | 946 |
| 2 | HDU/ICU | 65 |
| 2 | HDU/ICU (O2) | 16 |
| 2 | HDU/ICU (noninvasive) | 85 |
| 2 | ICU (ventilated) | 17 |
| 2 | Died | 72 |
| 3 | Discharged | 1876 |
| 3 | Ward | 1674 |
| 3 | Ward (O2) | 846 |
| 3 | HDU/ICU | 58 |
| 3 | HDU/ICU (O2) | 20 |
| 3 | HDU/ICU (noninvasive) | 86 |
| 3 | ICU (ventilated) | 18 |
| 3 | Died | 85 |
| 4 | Discharged | 2238 |
| 4 | Ward | 1379 |
| 4 | Ward (O2) | 754 |
| 4 | HDU/ICU | 55 |
| 4 | HDU/ICU (O2) | 17 |
| 4 | HDU/ICU (noninvasive) | 81 |
| 4 | ICU (ventilated) | 16 |
| 4 | Died | 116 |
| 5 | Discharged | 2562 |

| day | status | n |
|------------|-----------------------|----------|
| 5 | Ward | 1152 |
| 5 | Ward (O2) | 637 |
| 5 | HDU/ICU | 48 |
| 5 | HDU/ICU (O2) | 14 |
| 5 | HDU/ICU (noninvasive) | 77 |
| 5 | ICU (ventilated) | 16 |
| 5 | Died | 148 |
| 6 | Discharged | 2819 |
| 6 | Ward | 970 |
| 6 | Ward (O2) | 540 |
| 6 | HDU/ICU | 45 |
| 6 | HDU/ICU (O2) | 14 |
| 6 | HDU/ICU (noninvasive) | 71 |
| 6 | ICU (ventilated) | 15 |
| 6 | Died | 179 |
| 7 | Discharged | 3056 |
| 7 | Ward | 812 |
| 7 | Ward (O2) | 442 |
| 7 | HDU/ICU | 41 |
| 7 | HDU/ICU (O2) | 13 |
| 7 | HDU/ICU (noninvasive) | 66 |
| 7 | ICU (ventilated) | 14 |
| 7 | Died | 208 |
| 8 | Discharged | 3233 |
| 8 | Ward | 691 |
| 8 | Ward (O2) | 366 |
| 8 | HDU/ICU | 38 |
| 8 | HDU/ICU (O2) | 12 |
| 8 | HDU/ICU (noninvasive) | 60 |
| 8 | ICU (ventilated) | 13 |
| 8 | Died | 237 |
| 9 | Discharged | 3410 |

| day | status | n |
|------------|-----------------------|----------|
| 9 | Ward | 579 |
| 9 | Ward (O2) | 296 |
| 9 | HDU/ICU | 31 |
| 9 | HDU/ICU (O2) | 11 |
| 9 | HDU/ICU (noninvasive) | 44 |
| 9 | ICU (ventilated) | 12 |
| 9 | Died | 265 |
| 10 | Discharged | 3539 |
| 10 | Ward | 486 |
| 10 | Ward (O2) | 249 |
| 10 | HDU/ICU | 27 |
| 10 | HDU/ICU (O2) | 9 |
| 10 | HDU/ICU (noninvasive) | 37 |
| 10 | ICU (ventilated) | 10 |
| 10 | Died | 290 |

Table for figure 4B

| day | status | n |
|------------|-----------------------|----------|
| 1 | Discharged | 671 |
| 1 | Ward | 1470 |
| 1 | Ward (O2) | 425 |
| 1 | HDU/ICU | 48 |
| 1 | HDU/ICU (O2) | 6 |
| 1 | HDU/ICU (noninvasive) | 32 |
| 1 | ICU (ventilated) | 15 |
| 1 | Died | 18 |
| 2 | Discharged | 725 |
| 2 | Ward | 729 |
| 2 | Ward (O2) | 287 |
| 2 | HDU/ICU | 22 |
| 2 | HDU/ICU (O2) | 3 |
| 2 | HDU/ICU (noninvasive) | 16 |

| day | status | n |
|------------|-----------------------|----------|
| 2 | ICU (ventilated) | 4 |
| 2 | Died | 30 |
| 3 | Discharged | 913 |
| 3 | Ward | 558 |
| 3 | Ward (O2) | 250 |
| 3 | HDU/ICU | 19 |
| 3 | HDU/ICU (O2) | 5 |
| 3 | HDU/ICU (noninvasive) | 17 |
| 3 | ICU (ventilated) | 4 |
| 3 | Died | 29 |
| 4 | Discharged | 1043 |
| 4 | Ward | 448 |
| 4 | Ward (O2) | 220 |
| 4 | HDU/ICU | 17 |
| 4 | HDU/ICU (O2) | 3 |
| 4 | HDU/ICU (noninvasive) | 15 |
| 4 | ICU (ventilated) | 3 |
| 4 | Died | 41 |
| 5 | Discharged | 1145 |
| 5 | Ward | 378 |
| 5 | Ward (O2) | 184 |
| 5 | HDU/ICU | 14 |
| 5 | HDU/ICU (O2) | 2 |
| 5 | HDU/ICU (noninvasive) | 14 |
| 5 | ICU (ventilated) | 3 |
| 5 | Died | 50 |
| 6 | Discharged | 1230 |
| 6 | Ward | 311 |
| 6 | Ward (O2) | 158 |
| 6 | HDU/ICU | 13 |
| 6 | HDU/ICU (O2) | 2 |
| 6 | HDU/ICU (noninvasive) | 13 |

| day | status | n |
|------------|-----------------------|----------|
| 6 | ICU (ventilated) | 3 |
| 6 | Died | 60 |
| 7 | Discharged | 1298 |
| 7 | Ward | 262 |
| 7 | Ward (O2) | 131 |
| 7 | HDU/ICU | 12 |
| 7 | HDU/ICU (O2) | 2 |
| 7 | HDU/ICU (noninvasive) | 11 |
| 7 | ICU (ventilated) | 2 |
| 7 | Died | 72 |
| 8 | Discharged | 1365 |
| 8 | Ward | 213 |
| 8 | Ward (O2) | 101 |
| 8 | HDU/ICU | 12 |
| 8 | HDU/ICU (O2) | 2 |
| 8 | HDU/ICU (noninvasive) | 10 |
| 8 | ICU (ventilated) | 1 |
| 8 | Died | 85 |
| 9 | Discharged | 1428 |
| 9 | Ward | 166 |
| 9 | Ward (O2) | 83 |
| 9 | HDU/ICU | 8 |
| 9 | HDU/ICU (O2) | 2 |
| 9 | HDU/ICU (noninvasive) | 6 |
| 9 | ICU (ventilated) | 1 |
| 9 | Died | 93 |
| 10 | Discharged | 1475 |
| 10 | Ward | 132 |
| 10 | Ward (O2) | 67 |
| 10 | HDU/ICU | 6 |
| 10 | HDU/ICU (O2) | 2 |
| 10 | HDU/ICU (noninvasive) | 5 |

| day | status | n |
|------------|---------------|----------|
| 10 | Died | 99 |