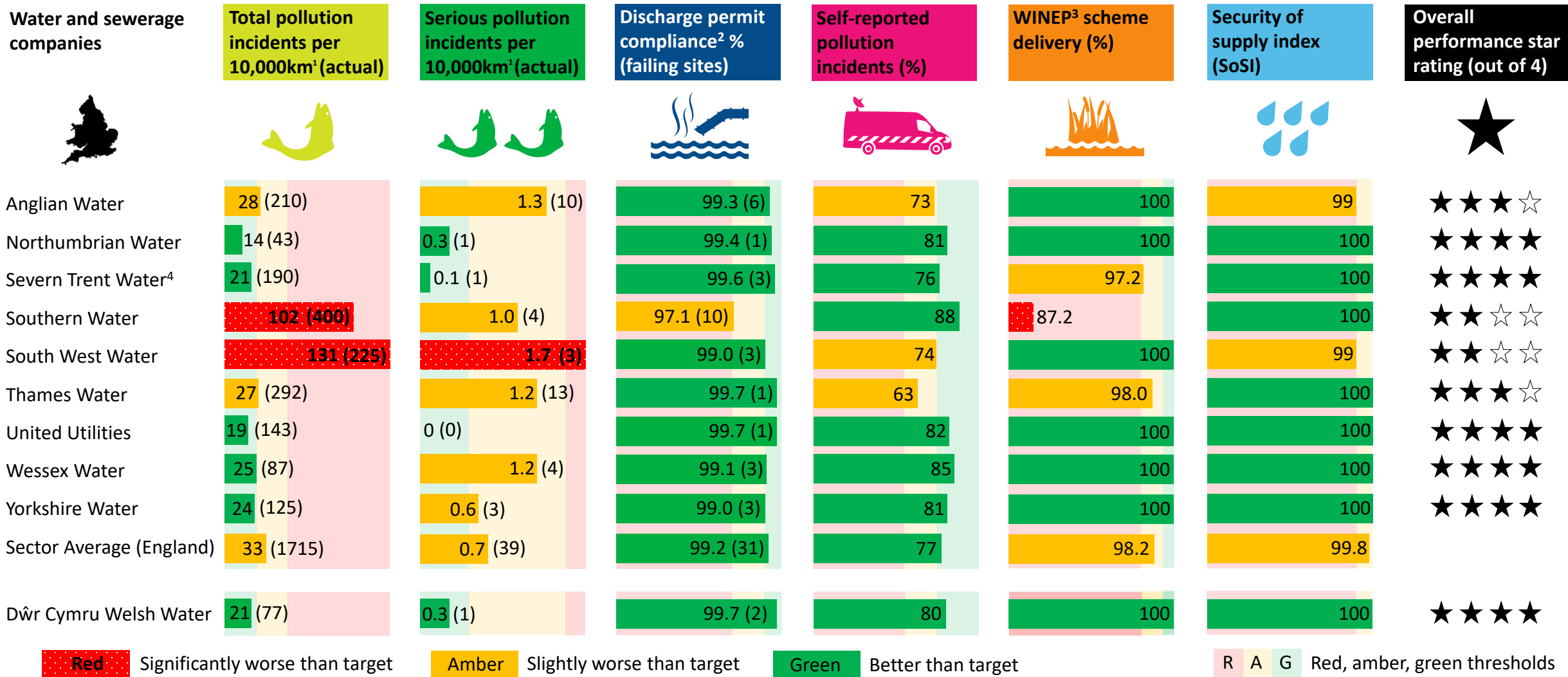


# Water and sewerage companies

## Environmental Performance Assessment 2020

For a version of this document in a more accessible format, and for individual water and sewerage company data reports please visit:

[www.gov.uk/government/publications/water-and-sewerage-companies-in-england-environmental-performance-report-2020](http://www.gov.uk/government/publications/water-and-sewerage-companies-in-england-environmental-performance-report-2020)



Note: These results are drawn, in part, from information submitted by the companies and may change as a result of subsequent audits and checking

<sup>1</sup> of sewer length

<sup>2</sup> Numeric sites

<sup>3</sup> Water Industry National Environment Programme

<sup>4</sup> Severn Trent Water 2020 data includes one site in Wales

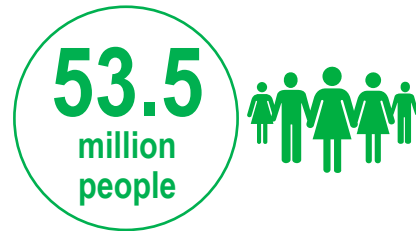
Source: Environment Agency & Natural Resources Wales

# Water and sewerage companies sector in England

## Main facts



Water and sewerage companies in England



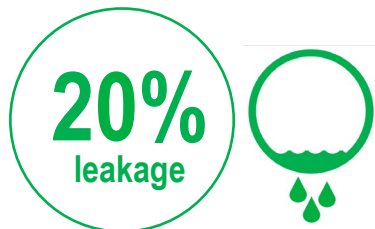
Serves around 53.5 million people



Around 19,000 environmental permits



Approximate number of properties internally flooded by sewage<sup>5</sup>



Leakage as a percent of all water abstracted is 20%<sup>6</sup>



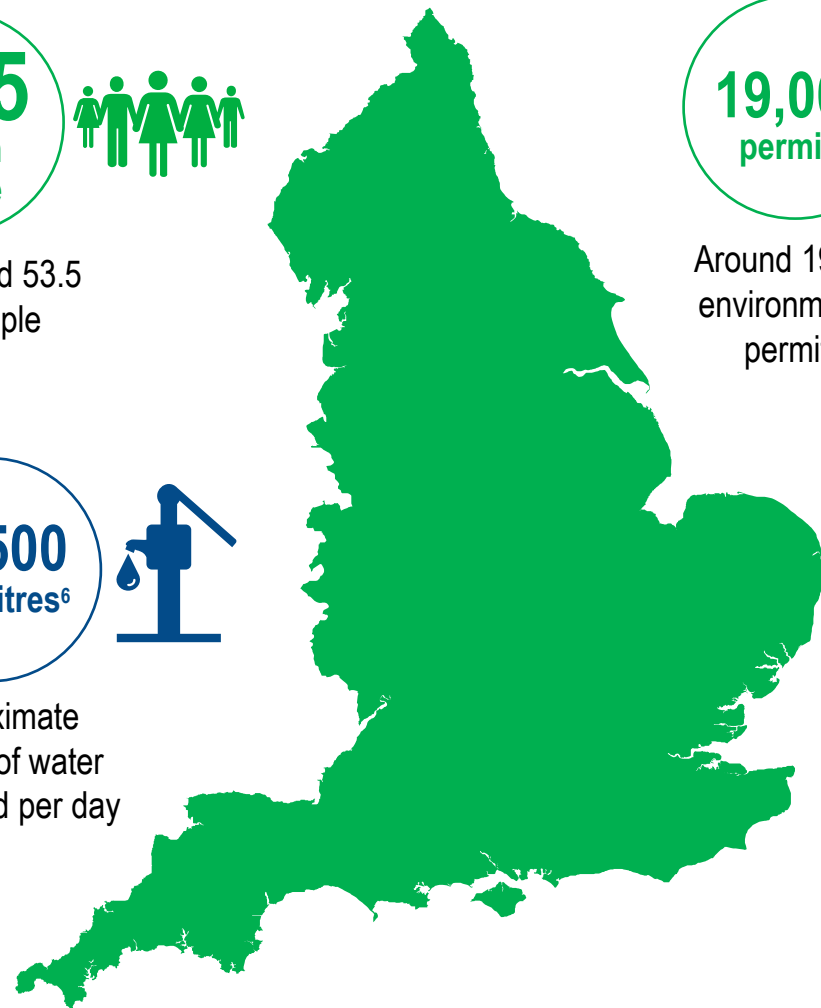
Approximate amount of water abstracted per day



Around 3,500 permitted sewage treatment works with numeric limits



Approximate amount of sludge produced in 2020<sup>7</sup>



<sup>5</sup> Between April 2019 and March 2020

<sup>6</sup> Megalitre equal to a million litres

<sup>7</sup> Total dry matter tonnes per year

Source: Environment Agency