

# Dynamic CO-CIN report to SAGE and NERVTAG

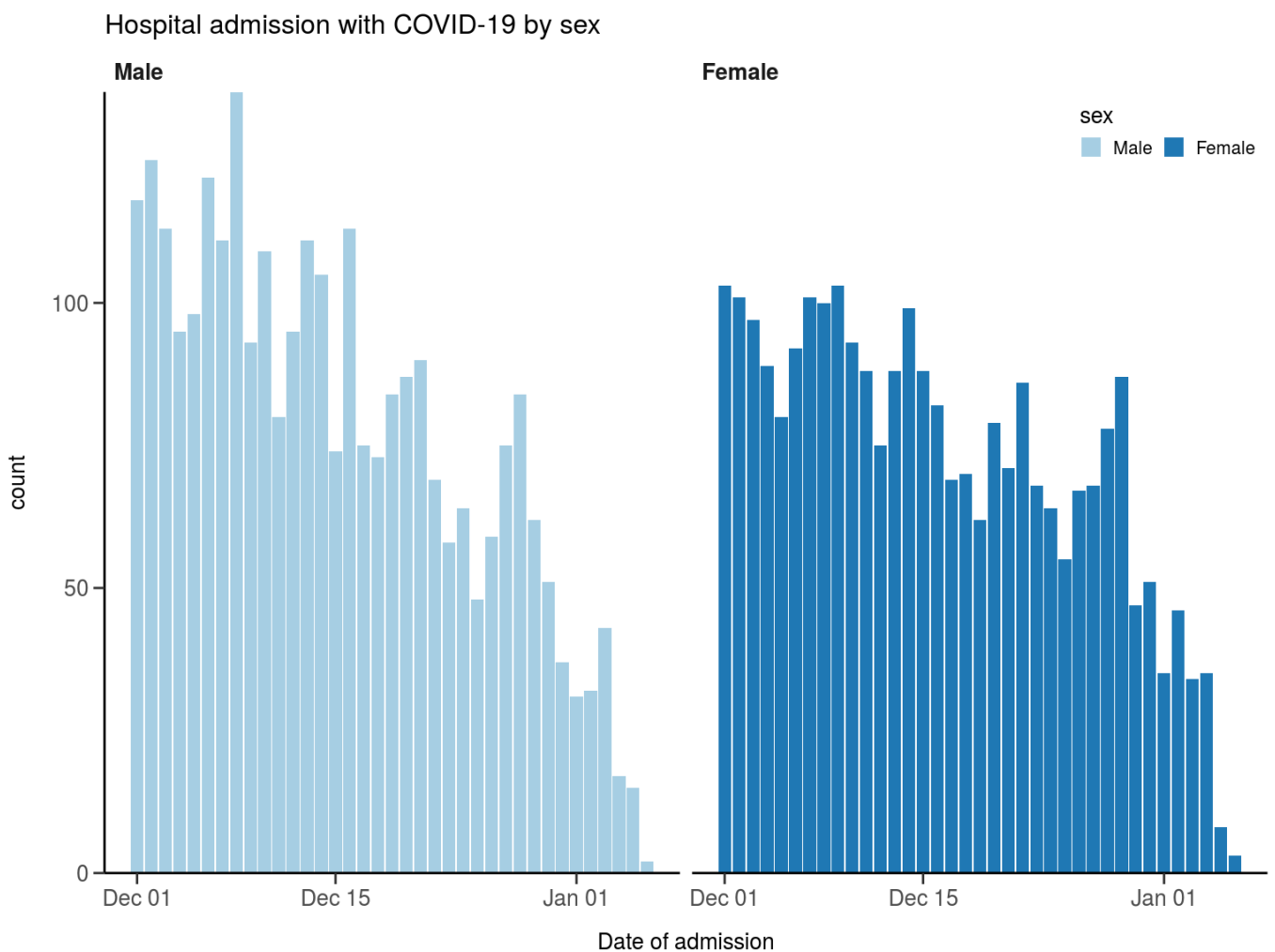
## Executive summary

### Includes patients admitted on or after 01 December 2021

There are 5544 patients included in CO-CIN. Of these, 342 patient(s) have died and 1088 required ICU. 2894 have been discharged home.

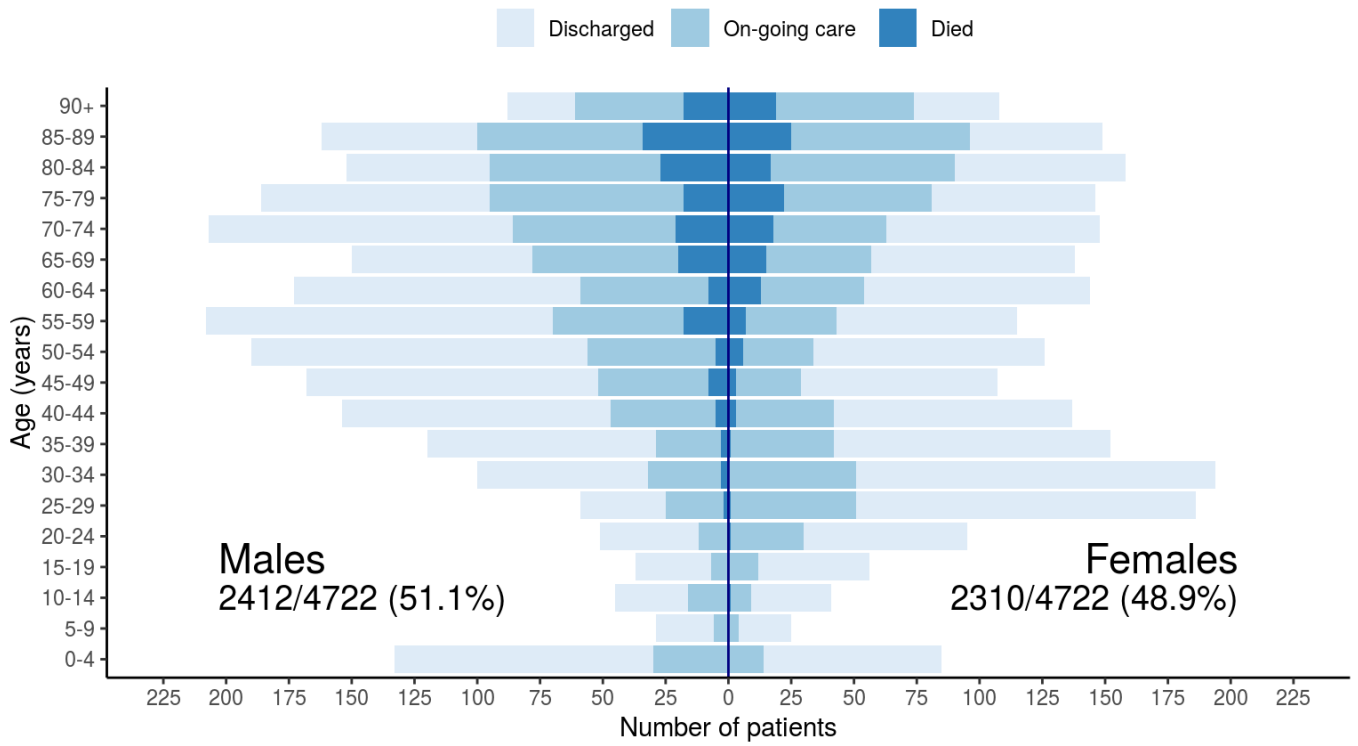
## Admission

Figure 1

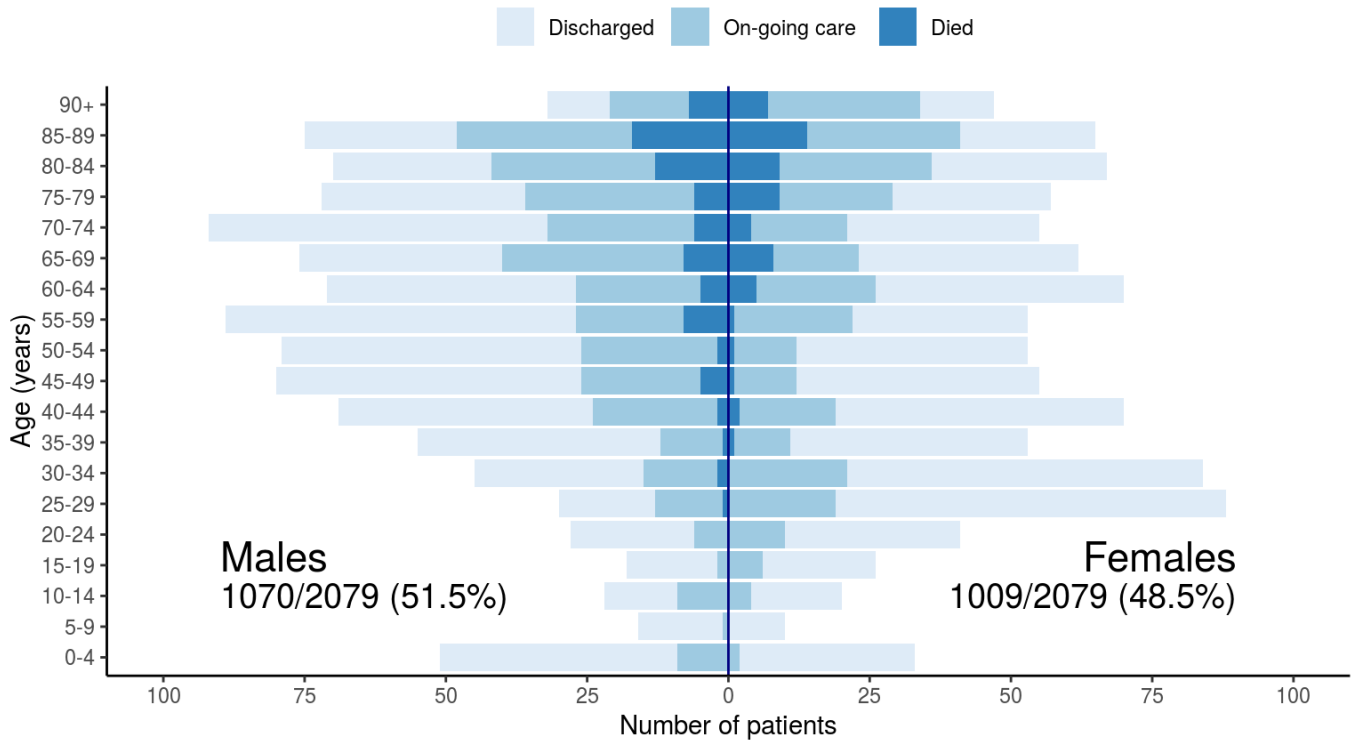


# Figure 2

Patients with outcome stratified by age, and sex  
All



Patients with outcome stratified by age, and sex  
Admitted >=14 days and <=28 days ago

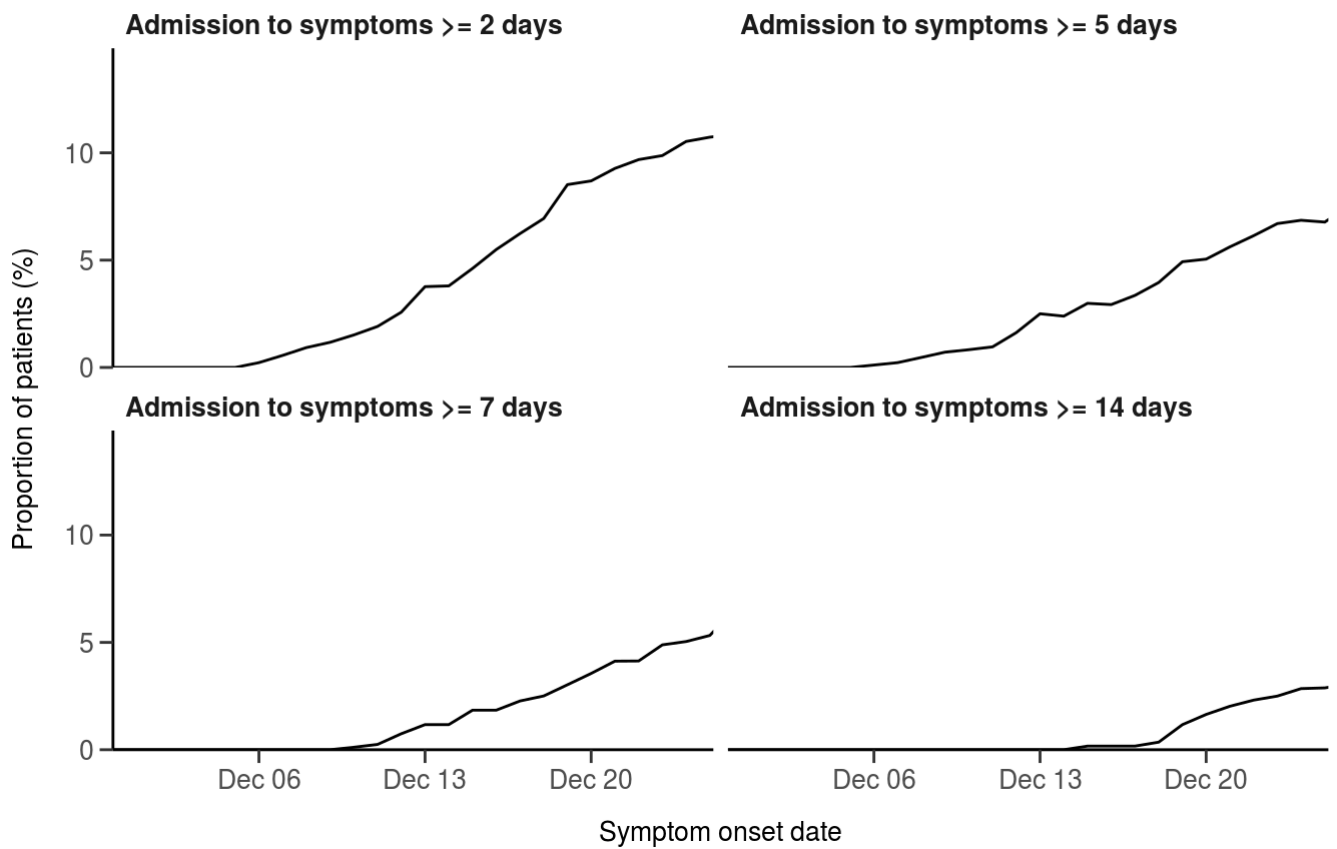


# Nosocomial

# Figure 3

## Proportion with symptom onset occurring after hospital admission

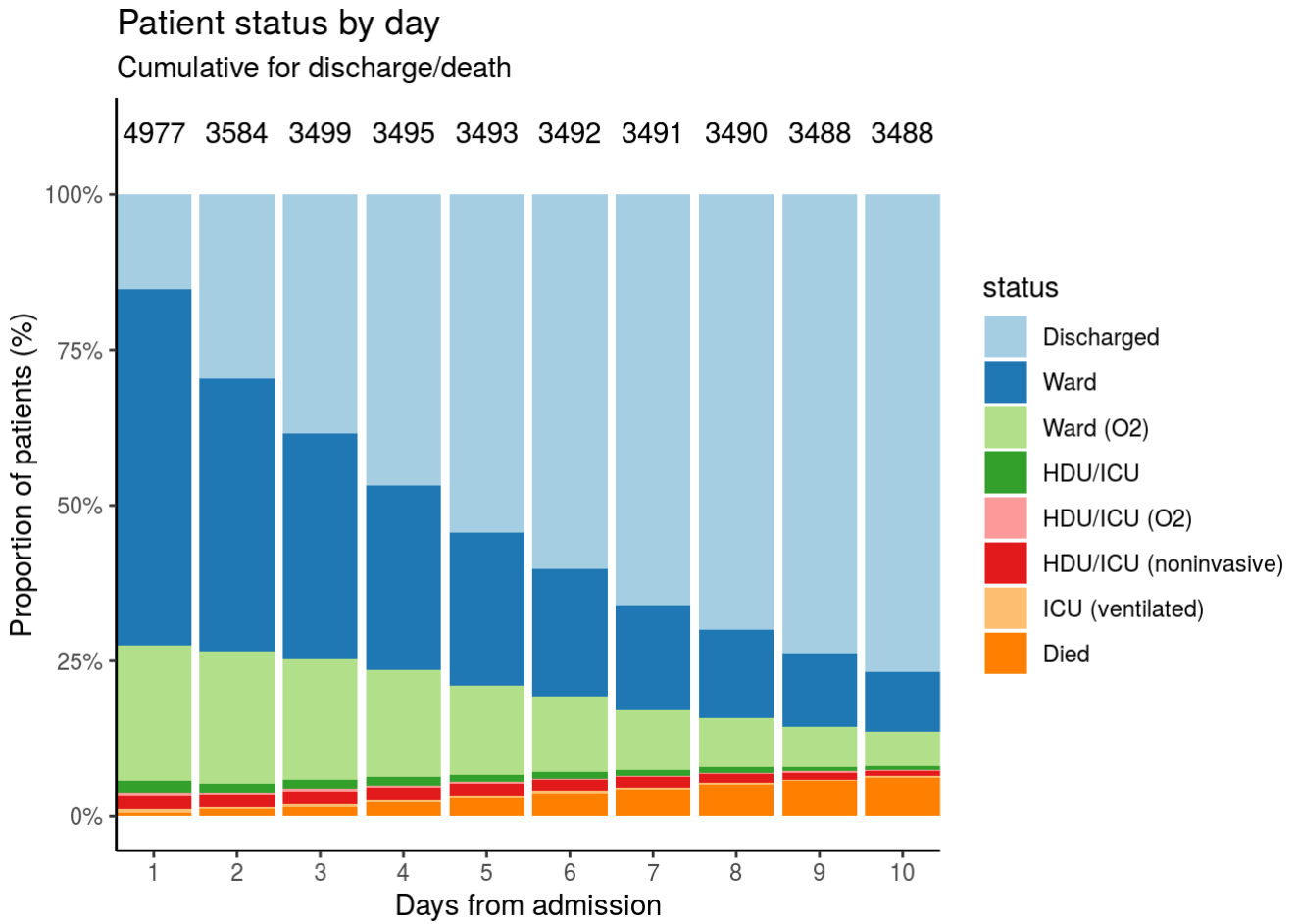
7-day rolling percentage. n = 3731



## Patient flow

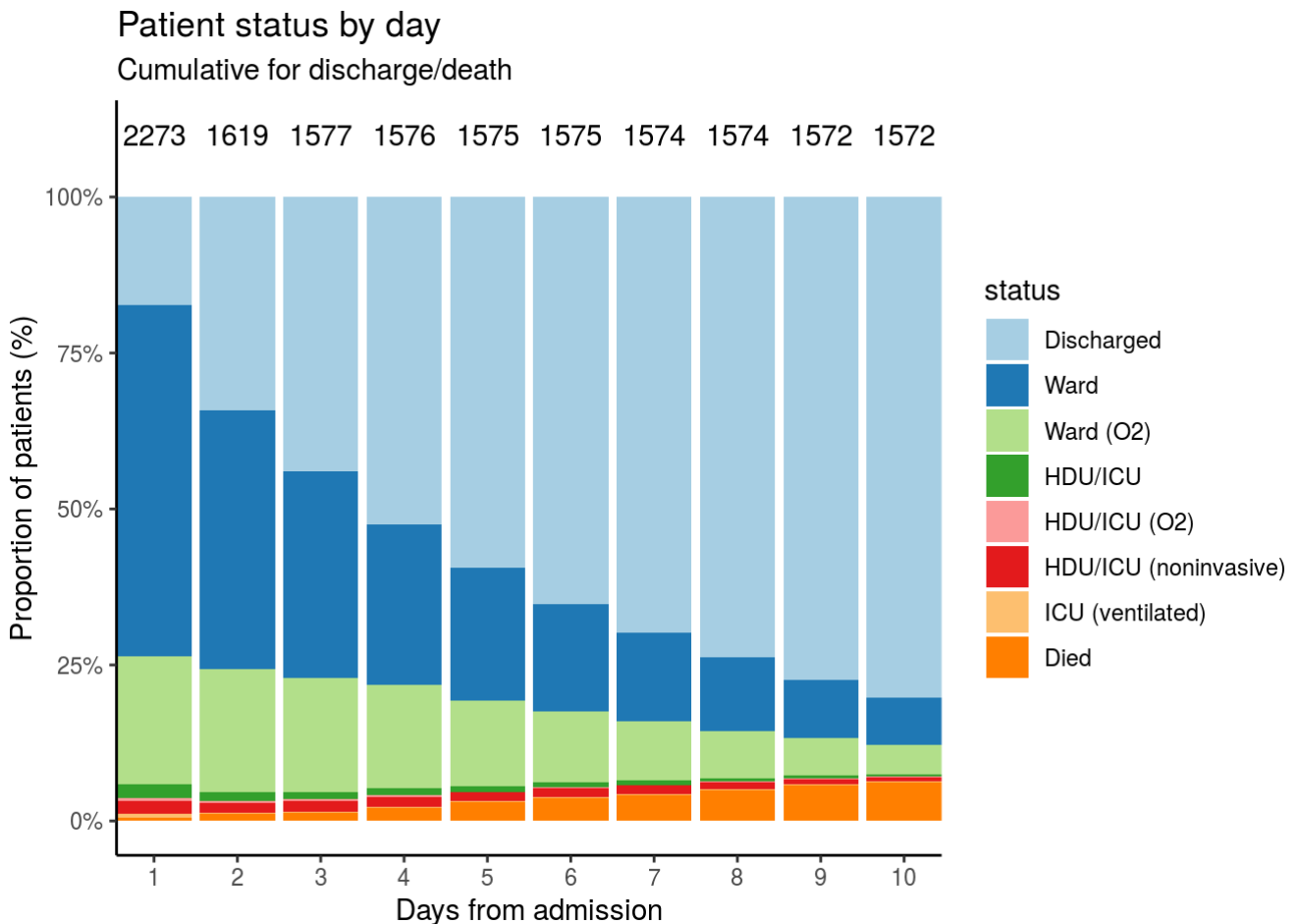
### Figure 4A - All patients

N = 4977



**Figure 4B - Patients admitted  $\geq 14$  days and  $\leq 28$  days ago**

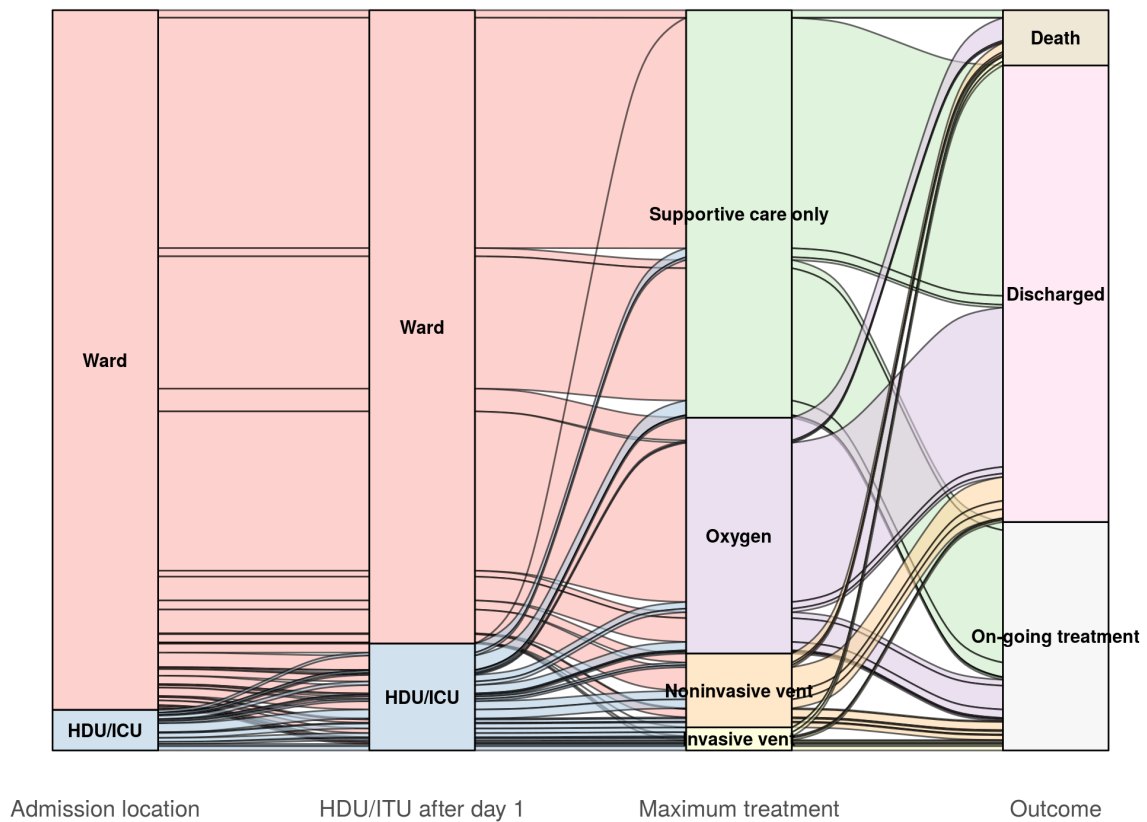
N = 2273



# Oxygen requirement

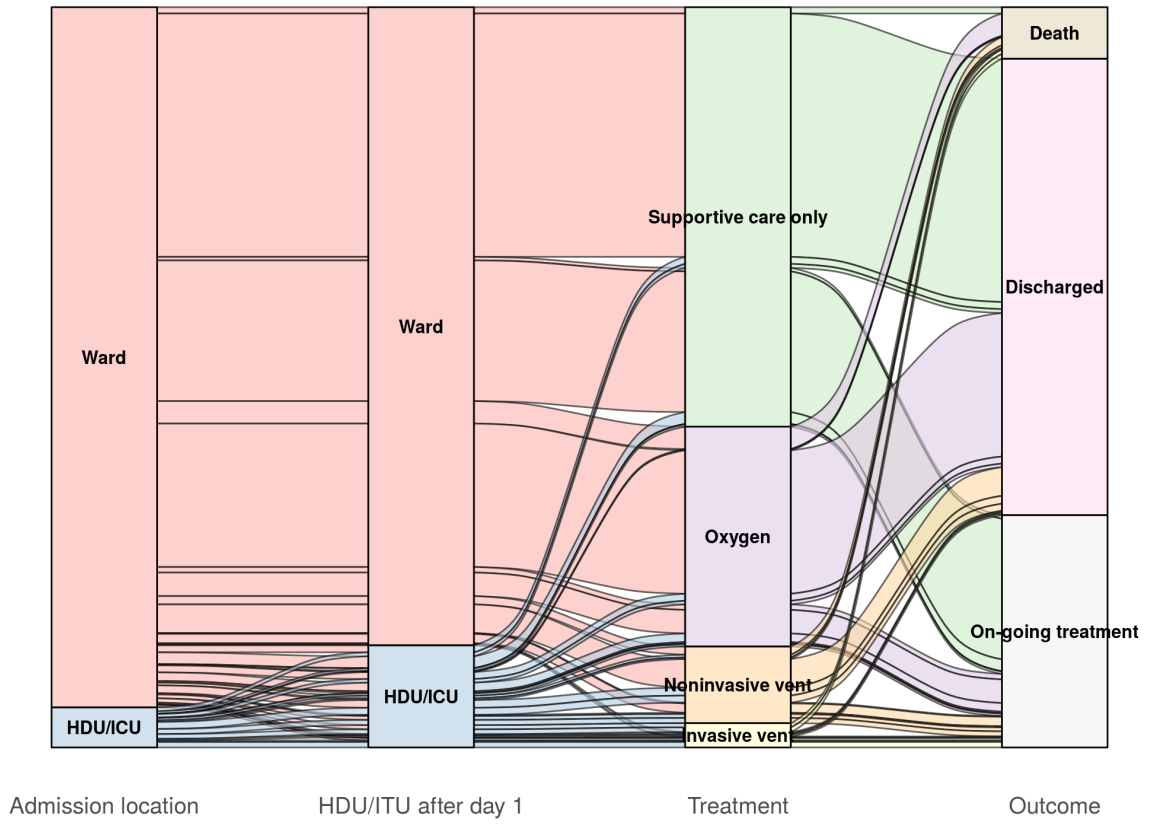
## Figure 5A - All patients

N = 4392



## Figure 5B - Patients admitted $\geq 14$ days and $\leq 28$ days ago

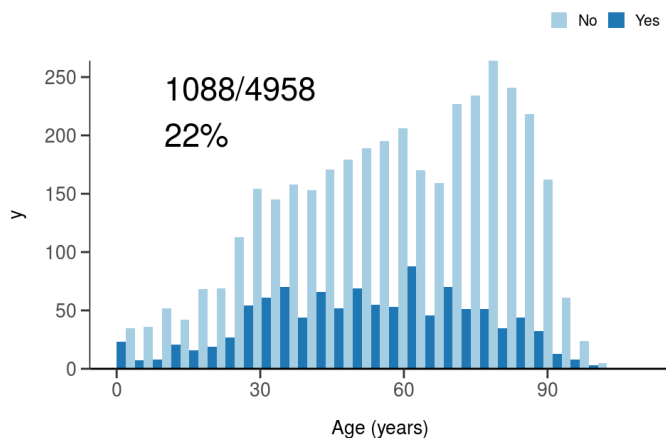
N = 1957



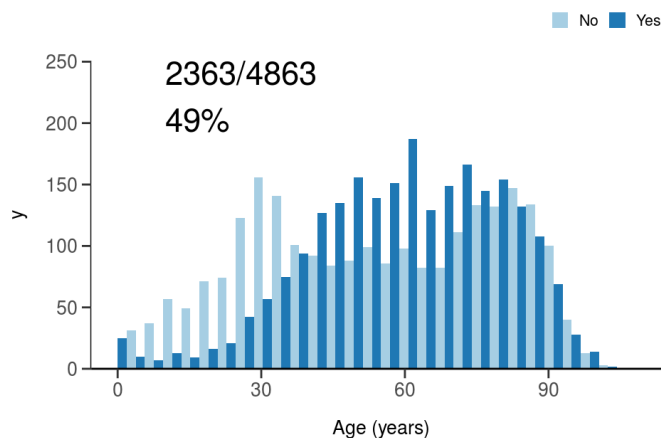
# Treatment

## Figure 6

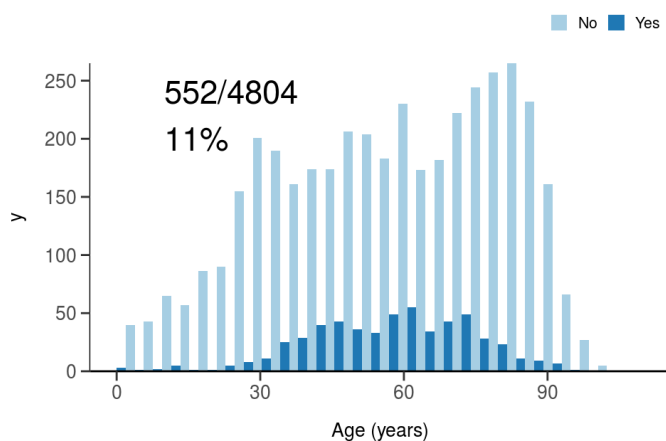
ICU/HDU admission  
Figure 10A



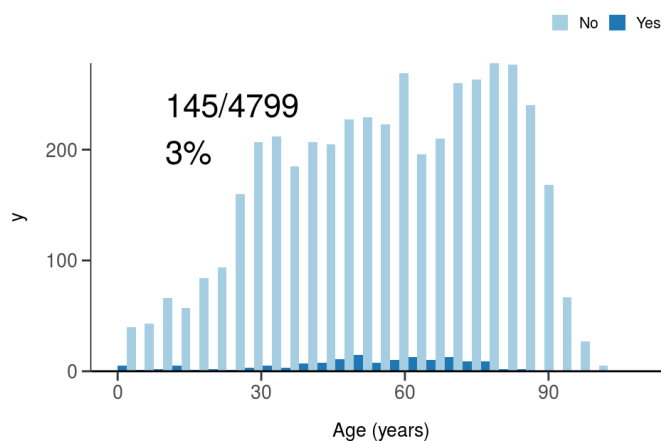
High flow oxygen  
Figure 10B



Noninvasive ventilation  
Figure 10C



Invasive ventilation  
Figure 10D



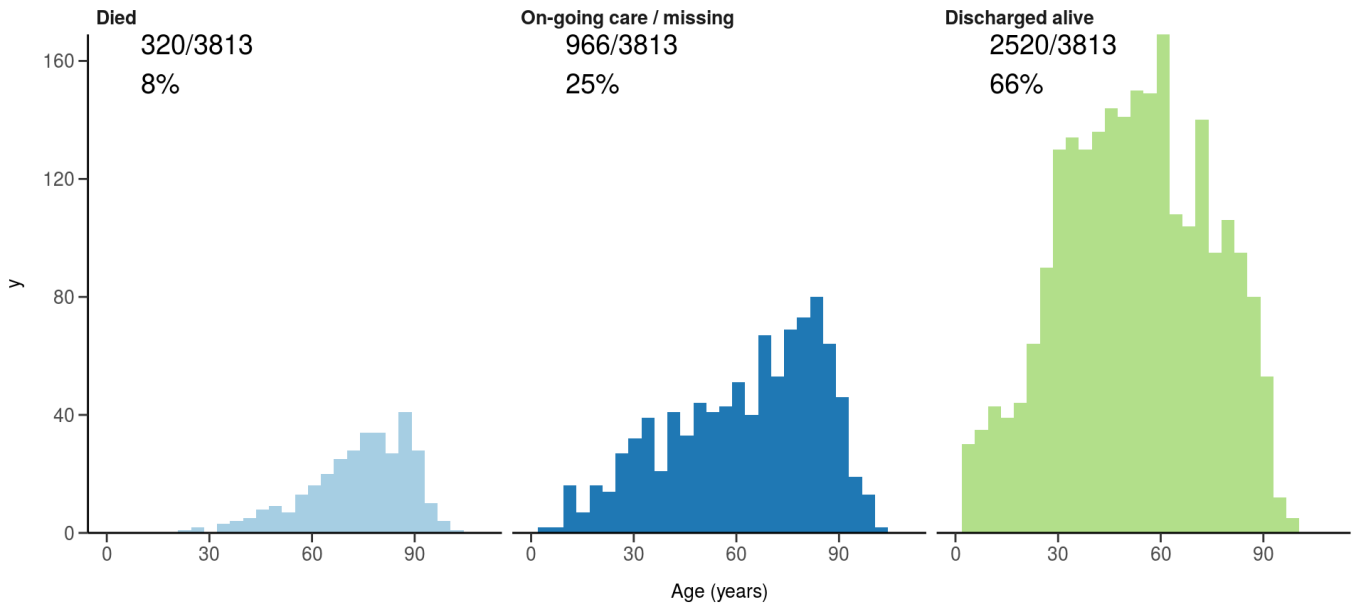
# Status in patients admitted $\geq 14$ days from today

## Figure 7

Where outcome is not reported, on-going care is assumed.

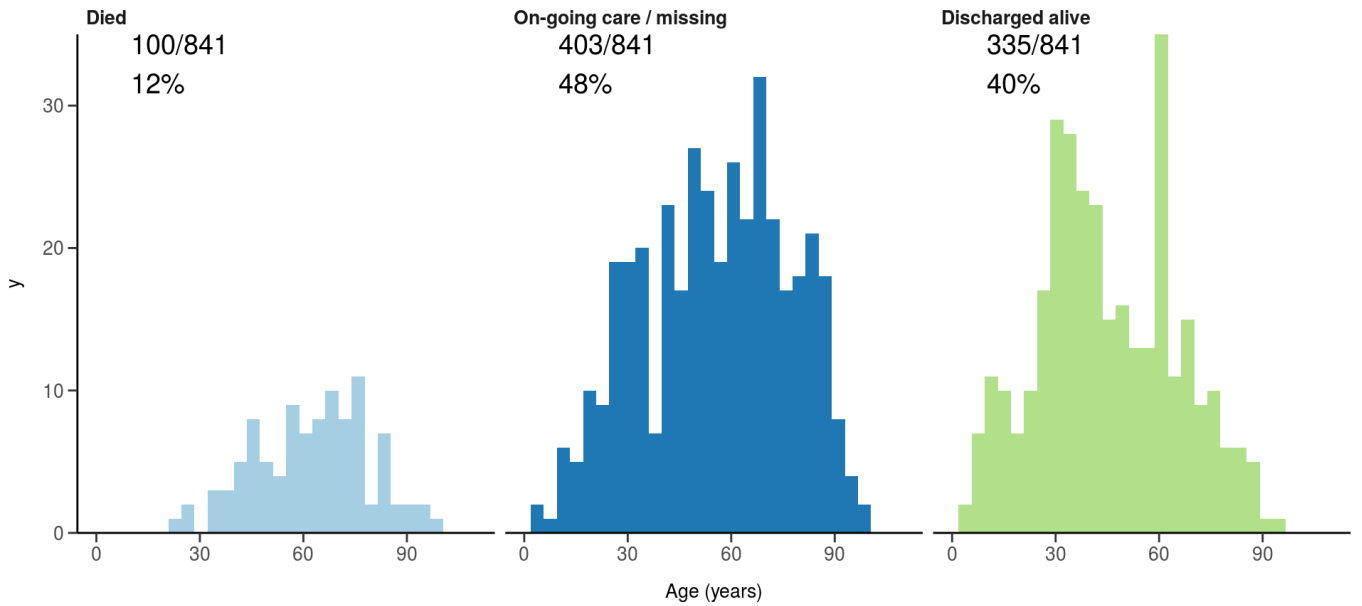
All: status in patients admitted  $\geq 14$  days ago

Figure 11A



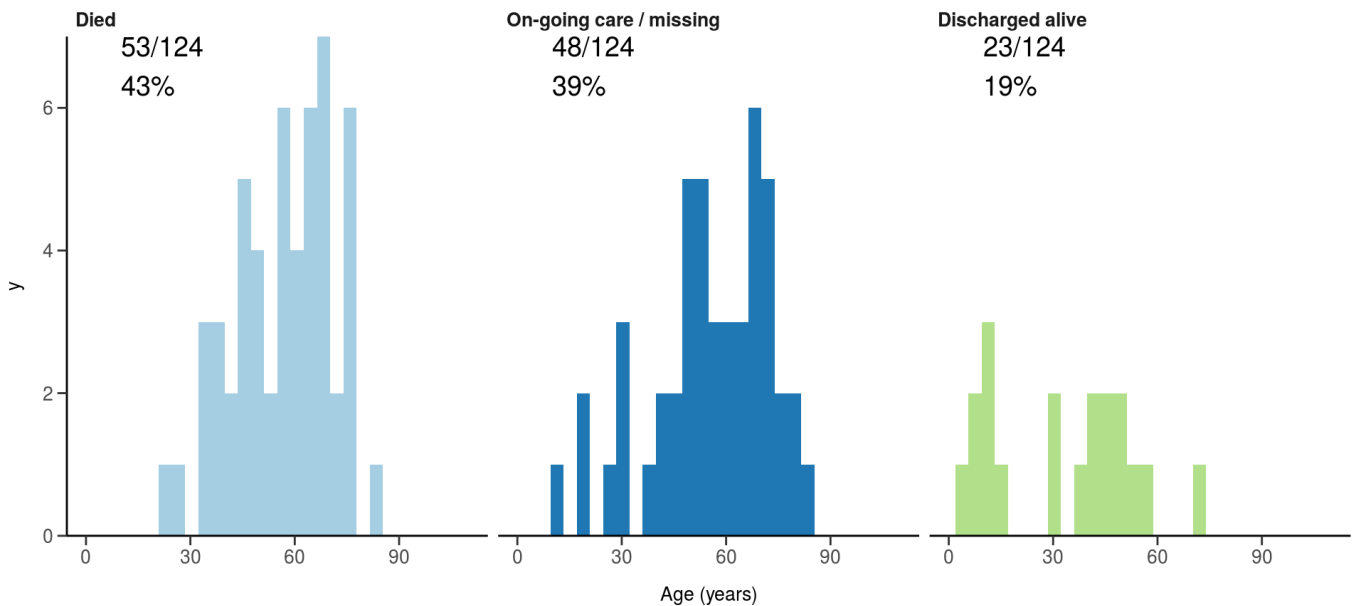
ICU/HDU admissions: status in patients admitted  $\geq 14$  days ago

Figure 11B



Invasive ventilation: status in patients admitted  $\geq 14$  days ago

Figure 11c

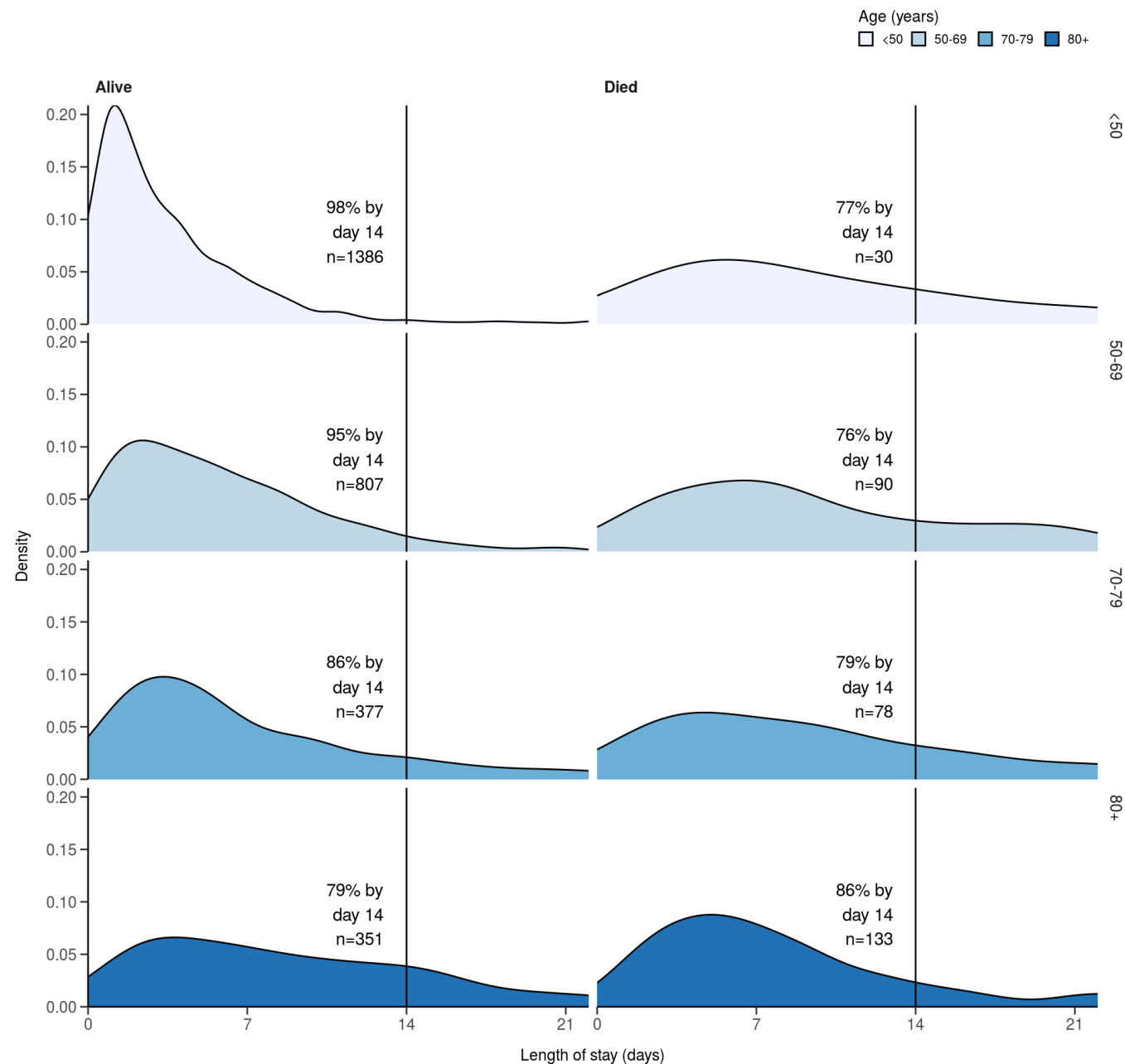




# Length of stay stratified by age

####Figure 8

Length of stay stratified by age and mortality  
 Proportion who reach outcome by day 14 shown



## Data

Table for figure 2A

age.factor	sex	status	n
0-4	Male	Discharged	103
0-4	Male	On-going care	30
0-4	Female	Discharged	71
0-4	Female	On-going care	14

<b>age.factor</b>	<b>sex</b>	<b>status</b>	<b>n</b>
5-9	Male	Discharged	23
5-9	Male	On-going care	6
5-9	Female	Discharged	21
5-9	Female	On-going care	4
10-14	Male	Discharged	29
10-14	Male	On-going care	16
10-14	Female	Discharged	32
10-14	Female	On-going care	8
10-14	Female	Died	1
10-14	NA	Discharged	1
15-19	Male	Discharged	30
15-19	Male	On-going care	7
15-19	Female	Discharged	44
15-19	Female	On-going care	12
20-24	Male	Discharged	39
20-24	Male	On-going care	12
20-24	Female	Discharged	65
20-24	Female	On-going care	29
20-24	Female	Died	1
25-29	Male	Discharged	34
25-29	Male	On-going care	23
25-29	Male	Died	2
25-29	Female	Discharged	135
25-29	Female	On-going care	50
25-29	Female	Died	1
30-34	Male	Discharged	68
30-34	Male	On-going care	29
30-34	Male	Died	3
30-34	Female	Discharged	143
30-34	Female	On-going care	51
35-39	Male	Discharged	91
35-39	Male	On-going care	26

<b>age.factor</b>	<b>sex</b>	<b>status</b>	<b>n</b>
35-39	Male	Died	3
35-39	Female	Discharged	110
35-39	Female	On-going care	41
35-39	Female	Died	1
40-44	Male	Discharged	107
40-44	Male	On-going care	42
40-44	Male	Died	5
40-44	Female	Discharged	95
40-44	Female	On-going care	39
40-44	Female	Died	3
45-49	Male	Discharged	116
45-49	Male	On-going care	44
45-49	Male	Died	8
45-49	Female	Discharged	78
45-49	Female	On-going care	26
45-49	Female	Died	3
45-49	NA	Discharged	1
50-54	Male	Discharged	134
50-54	Male	On-going care	51
50-54	Male	Died	5
50-54	Female	Discharged	92
50-54	Female	On-going care	28
50-54	Female	Died	6
55-59	Male	Discharged	138
55-59	Male	On-going care	52
55-59	Male	Died	18
55-59	Female	Discharged	72
55-59	Female	On-going care	36
55-59	Female	Died	7
55-59	Not specified	On-going care	1
60-64	Male	Discharged	114
60-64	Male	On-going care	51

<b>age.factor</b>	<b>sex</b>	<b>status</b>	<b>n</b>
60-64	Male	Died	8
60-64	Female	Discharged	90
60-64	Female	On-going care	41
60-64	Female	Died	13
65-69	Male	Discharged	72
65-69	Male	On-going care	58
65-69	Male	Died	20
65-69	Female	Discharged	81
65-69	Female	On-going care	42
65-69	Female	Died	15
70-74	Male	Discharged	121
70-74	Male	On-going care	65
70-74	Male	Died	21
70-74	Female	Discharged	85
70-74	Female	On-going care	45
70-74	Female	Died	18
70-74	NA	Discharged	1
75-79	Male	Discharged	91
75-79	Male	On-going care	77
75-79	Male	Died	18
75-79	Female	Discharged	65
75-79	Female	On-going care	59
75-79	Female	Died	22
75-79	Not specified	On-going care	1
80-84	Male	Discharged	57
80-84	Male	On-going care	68
80-84	Male	Died	27
80-84	Female	Discharged	68
80-84	Female	On-going care	73
80-84	Female	Died	17
85-89	Male	Discharged	62
85-89	Male	On-going care	66

<b>age.factor</b>	<b>sex</b>	<b>status</b>	<b>n</b>
85-89	Male	Died	34
85-89	Female	Discharged	53
85-89	Female	On-going care	71
85-89	Female	Died	25
90+	Male	Discharged	27
90+	Male	On-going care	43
90+	Male	Died	18
90+	Female	Discharged	34
90+	Female	On-going care	55
90+	Female	Died	19

## Table for figure 2B

<b>age.factor</b>	<b>sex</b>	<b>status</b>	<b>n</b>
0-4	Male	Discharged	42
0-4	Male	On-going care	9
0-4	Female	Discharged	31
0-4	Female	On-going care	2
5-9	Male	Discharged	15
5-9	Male	On-going care	1
5-9	Female	Discharged	10
10-14	Male	Discharged	13
10-14	Male	On-going care	9
10-14	Female	Discharged	16
10-14	Female	On-going care	4
15-19	Male	Discharged	16
15-19	Male	On-going care	2
15-19	Female	Discharged	20
15-19	Female	On-going care	6
20-24	Male	Discharged	22
20-24	Male	On-going care	6
20-24	Female	Discharged	31
20-24	Female	On-going care	10

<b>age.factor</b>	<b>sex</b>	<b>status</b>	<b>n</b>
25-29	Male	Discharged	17
25-29	Male	On-going care	12
25-29	Male	Died	1
25-29	Female	Discharged	69
25-29	Female	On-going care	19
30-34	Male	Discharged	30
30-34	Male	On-going care	13
30-34	Male	Died	2
30-34	Female	Discharged	63
30-34	Female	On-going care	21
35-39	Male	Discharged	43
35-39	Male	On-going care	11
35-39	Male	Died	1
35-39	Female	Discharged	42
35-39	Female	On-going care	10
35-39	Female	Died	1
40-44	Male	Discharged	45
40-44	Male	On-going care	22
40-44	Male	Died	2
40-44	Female	Discharged	51
40-44	Female	On-going care	17
40-44	Female	Died	2
45-49	Male	Discharged	54
45-49	Male	On-going care	21
45-49	Male	Died	5
45-49	Female	Discharged	43
45-49	Female	On-going care	11
45-49	Female	Died	1
50-54	Male	Discharged	53
50-54	Male	On-going care	24
50-54	Male	Died	2
50-54	Female	Discharged	41

<b>age.factor</b>	<b>sex</b>	<b>status</b>	<b>n</b>
50-54	Female	On-going care	11
50-54	Female	Died	1
55-59	Male	Discharged	62
55-59	Male	On-going care	19
55-59	Male	Died	8
55-59	Female	Discharged	31
55-59	Female	On-going care	21
55-59	Female	Died	1
60-64	Male	Discharged	44
60-64	Male	On-going care	22
60-64	Male	Died	5
60-64	Female	Discharged	44
60-64	Female	On-going care	21
60-64	Female	Died	5
65-69	Male	Discharged	36
65-69	Male	On-going care	32
65-69	Male	Died	8
65-69	Female	Discharged	39
65-69	Female	On-going care	15
65-69	Female	Died	8
70-74	Male	Discharged	60
70-74	Male	On-going care	26
70-74	Male	Died	6
70-74	Female	Discharged	34
70-74	Female	On-going care	17
70-74	Female	Died	4
75-79	Male	Discharged	36
75-79	Male	On-going care	30
75-79	Male	Died	6
75-79	Female	Discharged	28
75-79	Female	On-going care	20
75-79	Female	Died	9

<b>age.factor</b>	<b>sex</b>	<b>status</b>	<b>n</b>
80-84	Male	Discharged	28
80-84	Male	On-going care	29
80-84	Male	Died	13
80-84	Female	Discharged	31
80-84	Female	On-going care	27
80-84	Female	Died	9
85-89	Male	Discharged	27
85-89	Male	On-going care	31
85-89	Male	Died	17
85-89	Female	Discharged	24
85-89	Female	On-going care	27
85-89	Female	Died	14
90+	Male	Discharged	11
90+	Male	On-going care	14
90+	Male	Died	7
90+	Female	Discharged	13
90+	Female	On-going care	27
90+	Female	Died	7

## Table for figure 4A

<b>day</b>	<b>status</b>	<b>n</b>
-1	Discharged	1
1	Discharged	763
1	Ward	2842
1	Ward (O2)	1086
1	HDU/ICU	98
1	HDU/ICU (O2)	21
1	HDU/ICU (noninvasive)	110
1	ICU (ventilated)	33
1	Died	24
2	Discharged	1060
2	Ward	1574



<b>day</b>	<b>status</b>	<b>n</b>
2	Ward (O2)	759
2	HDU/ICU	54
2	HDU/ICU (O2)	12
2	HDU/ICU (noninvasive)	73
2	ICU (ventilated)	12
2	Died	40
3	Discharged	1345
3	Ward	1271
3	Ward (O2)	679
3	HDU/ICU	49
3	HDU/ICU (O2)	15
3	HDU/ICU (noninvasive)	73
3	ICU (ventilated)	13
3	Died	54
4	Discharged	1636
4	Ward	1036
4	Ward (O2)	601
4	HDU/ICU	47
4	HDU/ICU (O2)	12
4	HDU/ICU (noninvasive)	70
4	ICU (ventilated)	12
4	Died	81
5	Discharged	1900
5	Ward	859
5	Ward (O2)	499
5	HDU/ICU	40
5	HDU/ICU (O2)	9
5	HDU/ICU (noninvasive)	66
5	ICU (ventilated)	12
5	Died	108
6	Discharged	2104
6	Ward	717

<b>day</b>	<b>status</b>	<b>n</b>
6	Ward (O2)	420
6	HDU/ICU	38
6	HDU/ICU (O2)	9
6	HDU/ICU (noninvasive)	61
6	ICU (ventilated)	12
6	Died	131
7	Discharged	2305
7	Ward	588
7	Ward (O2)	336
7	HDU/ICU	34
7	HDU/ICU (O2)	8
7	HDU/ICU (noninvasive)	57
7	ICU (ventilated)	11
7	Died	152
8	Discharged	2444
8	Ward	493
8	Ward (O2)	277
8	HDU/ICU	31
8	HDU/ICU (O2)	7
8	HDU/ICU (noninvasive)	51
8	ICU (ventilated)	10
8	Died	177
9	Discharged	2574
9	Ward	411
9	Ward (O2)	225
9	HDU/ICU	25
9	HDU/ICU (O2)	7
9	HDU/ICU (noninvasive)	38
9	ICU (ventilated)	9
9	Died	199
10	Discharged	2675
10	Ward	339

<b>day</b>	<b>status</b>	<b>n</b>
10	Ward (O2)	190
10	HDU/ICU	22
10	HDU/ICU (O2)	5
10	HDU/ICU (noninvasive)	31
10	ICU (ventilated)	7
10	Died	219

## Table for figure 4B

<b>day</b>	<b>status</b>	<b>n</b>
1	Discharged	395
1	Ward	1277
1	Ward (O2)	467
1	HDU/ICU	50
1	HDU/ICU (O2)	11
1	HDU/ICU (noninvasive)	45
1	ICU (ventilated)	16
1	Died	12
2	Discharged	554
2	Ward	671
2	Ward (O2)	320
2	HDU/ICU	22
2	HDU/ICU (O2)	4
2	HDU/ICU (noninvasive)	26
2	ICU (ventilated)	4
2	Died	18
3	Discharged	693
3	Ward	522
3	Ward (O2)	288
3	HDU/ICU	19
3	HDU/ICU (O2)	5
3	HDU/ICU (noninvasive)	26
3	ICU (ventilated)	4

<b>day</b>	<b>status</b>	<b>n</b>
3	Died	20
4	Discharged	826
4	Ward	406
4	Ward (O2)	262
4	HDU/ICU	17
4	HDU/ICU (O2)	4
4	HDU/ICU (noninvasive)	25
4	ICU (ventilated)	3
4	Died	33
5	Discharged	935
5	Ward	337
5	Ward (O2)	215
5	HDU/ICU	14
5	HDU/ICU (O2)	2
5	HDU/ICU (noninvasive)	22
5	ICU (ventilated)	3
5	Died	47
6	Discharged	1027
6	Ward	271
6	Ward (O2)	180
6	HDU/ICU	12
6	HDU/ICU (O2)	2
6	HDU/ICU (noninvasive)	22
6	ICU (ventilated)	3
6	Died	58
7	Discharged	1100
7	Ward	222
7	Ward (O2)	150
7	HDU/ICU	11
7	HDU/ICU (O2)	2
7	HDU/ICU (noninvasive)	21
7	ICU (ventilated)	2

<b>day</b>	<b>status</b>	<b>n</b>
7	Died	66
8	Discharged	1162
8	Ward	186
8	Ward (O2)	118
8	HDU/ICU	9
8	HDU/ICU (O2)	2
8	HDU/ICU (noninvasive)	18
8	ICU (ventilated)	1
8	Died	78
9	Discharged	1217
9	Ward	146
9	Ward (O2)	95
9	HDU/ICU	6
9	HDU/ICU (O2)	2
9	HDU/ICU (noninvasive)	14
9	ICU (ventilated)	1
9	Died	91
10	Discharged	1262
10	Ward	118
10	Ward (O2)	75
10	HDU/ICU	5
10	HDU/ICU (O2)	2
10	HDU/ICU (noninvasive)	11
10	ICU (ventilated)	1
10	Died	98